



# SKYEMODULE NOVA DATASHEET

V1.4



# COPYRIGHT INFORMATION:

Copyright 2014 SkyeTek, Inc., 1732 Wazee St. Suite 202, Denver, Colorado 80202, U.S.A. All rights reserved.

Version 031014

This product or document is protected by copyright and distributed under licenses restricting its use, copying, distribution, and decompilation. No part of this product or document may be reproduced in any form by any means without prior written authorization of SkyeTek and its licensors, if any.

SkyeTek and SkyeWare are trademarks or registered trademarks of SkyeTek, Inc.  
MIFARE and NXP is a registered trademark of Royal Philips Electronics.  
MicroSoft and Windows are registered trademarks of Microsoft Corporation.

## TECHNICAL SUPPORT AND CONTACT INFORMATION

SkyeTek, Inc.

1732 Wazee St. Suite 202

Denver, CO 80202

<http://www.skyetek.com>

SALES:

[sales@skyetek.com](mailto:sales@skyetek.com)

TECHNICAL SUPPORT:

[support@skyetek.com](mailto:support@skyetek.com)

# TABLE OF CONTENTS

- 1 INTRODUCTION..... 7**
  - 1.1 GETTING STARTED .....7
  - 1.2 WHY A SKYETEK MODULE? .....7
  - 1.3 ADDITIONAL READING .....8
  - 1.4 REVISION HISTORY .....8
- 2 DEFINITION OF TERMS ..... 8**
- 3 ORDERING INFORMATION ..... 9**
  - 3.1 NOVA STANDARD PART NUMBERS .....9
  - 3.2 HOW TO BUY .....9
- 4 SKYEMODULE NOVA OVERVIEW ..... 10**
  - 4.1 DESCRIPTION.....10
  - 4.2 BLOCK DIAGRAM .....10
  - 4.3 FEATURES.....11
  - 4.4 APPLICATIONS .....11
  - 4.5 AGENCY APPROVALS .....12
- 5 MECHANICAL SPECIFICATIONS ..... 12**
  - 5.1 CONNECTOR DESCRIPTIONS .....13
  - 5.2 HOST INTERFACE CONNECTOR PIN MAPPING .....13
  - 5.3 USING THE GPIO PINS .....14
- 6 ELECTRICAL SPECIFICATIONS ..... 15**
  - 6.1 ELECTRICAL CHARACTERISTICS .....15
  - 6.2 ABSOLUTE MAXIMUM RATINGS.....16
- 7 ENVIRONMENTAL SPECIFICATIONS ..... 16**
  - 7.1 ELECTROSTATIC PRECAUTIONS.....16
  - 7.2 GENERAL RATINGS AND OPERATING CONDITIONS .....16
- 8 SYSTEM PERFORMANCE..... 17**
  - 8.1 SYSTEM RANGE .....17
- 9 REGULATORY APPROVALS AND MODULE INTEGRATION GUIDELINES ..... 17**
  - 9.1 AGENCY APPROVALS .....17
  - 9.2 FCC/IC GUIDELINES (ENGLISH) .....17
  - 9.3 FCC/IC GUIDELINES (FRANÇAIS) .....20
  - 9.4 EU GUIDELINES.....23
- 10 HOST INTERFACE SPECIFICATIONS..... 23**
  - 10.1 USB 2.0 .....25

- 10.2 TTL SERIAL.....26
- 10.3 SPI .....28
- 10.4 I<sup>2</sup>C.....31
- 11 SKYEMODULE NOVA ANTENNA OPTIONS..... 33**
- 12 COMMUNICATING WITH THE MODULE ..... 34**
  - 12.1 HOST COMMUNICATION (SKYTEK PROTOCOL V3).....34
  - 12.2 REQUEST FORMATS.....34
  - 12.3 RESPONSE FORMATS .....35
- 13 SYSTEM PARAMETERS ..... 36**
  - 13.1 SYSTEM PARAMETER SUMMARY .....36
  - 13.2 CHANGING SYSTEM PARAMETERS .....37
  - 13.3 SYSTEM PARAMETER DETAILS.....37
- 14 SPECIAL FEATURES ..... 46**
  - 14.1 SLEEP MODES .....46
  - 14.2 FEATURE REQUESTS .....46

# LIST OF FIGURES

Figure 3-1: Skyetek Part Number Format .....9

Figure 4-1: SM-GM-AC (with all connectors) .....10

Figure 4-2: SkyeModule Nova Block Diagram.....11

Figure 5-1: SM-GM Mechanical Drawing.....12

Figure 6-1: Host Interface Connector Pin Numbering .....14

Figure 9-2: Range Specifications.....17

Figure 11-1: USB Connection Diagram .....25

Figure 11-2: TTL Serial Connection Diagram.....26

Figure 11-3: TTL Serial Timing Diagram .....27

Figure 11-4: SPI Connection Diagram .....28

Figure 11-5: SPI Request Setup and Sample Timing .....29

Figure 11-6: SPI Request Timing .....29

Figure 11-7: SPI Response Timing.....30

Figure 11-8: I<sup>2</sup>C Connection Diagram.....31

Figure 11-9: I<sup>2</sup>C Timing Diagram .....33

# LIST OF TABLES

Table 1-1: Revision History ..... 8

Table 3-1: Nova Standard Part Numbers ..... 9

Table 3-2: Part Number Details ..... 9

Table 6-1: SkyeModule Nova Connector Specification ..... 13

Table 6-2: SkyeModule Nova Pin Descriptions ..... **Error! Bookmark not defined.**

Table 7-1: Environmental Ratings/Operating Conditions ..... 16

Table 8-1: SkyeModule Nova Electrical Specifications ..... **Error! Bookmark not defined.**

Table 8-2: Absolute Maximum Ratings ..... **Error! Bookmark not defined.**

Table 13-1: Request Format (bytes), ASCII Mode ..... 34

Table 13-2: Request Format (bytes), Binary Mode ..... 34

Table 13-3: Response Format (bytes), Binary Mode ..... 35

Table 14-1: SkyeModule Nova System Parameters ..... 36

Table 14-10: Common Power Values ..... 41

Table 14-11: Commonly Used Frequencies ..... 43

Table 14-12: Common Modulation Depth Values ..... 44

Table 14-13: Regulatory Mode Values ..... 44

## 1 Introduction

### 1.1 Getting Started

**Operating your SkyeModule Nova begins with finding a method to connect to a host.** The SkyeModule itself does not operate without direction (commands) from a host. The host can be in the form of a PC or, more typically, an embedded microcontroller. This document explains the physical and electrical characteristics of the module, so you can understand how to integrate the Nova into a finished product.

For **initial demonstration** of the module, **SkyeWare v4 software** is available on the media that came with the developer/evaluation kit or available for download at [support.skyetek.com](http://support.skyetek.com). Open this software on your windows PC and it will be recognized when you connect through USB or RS232 (with developer kit interface board). The software demonstrates features like selecting tags, reading and writing. It also has a powerful command builder that lets you format, send and receive any command to and from the reader. More about SkyeWare can be found in the SkyeWare User Guide. See the Additional Reading section below.

The **next step** after demonstrating the module's functionality is **developing your own communication with the module**. This can be achieved with simple code on a microcontroller or using the SkyeTek API on a PC. Once connected to a host through one of the four host interfaces, the reader to host communication is formatted with a full featured protocol called SkyeTek Protocol v3. In order to make learning commands and formatting easy, we have developed a series of application notes with examples to get you started. The application notes start with basic tag and reader commands and become very detailed for tags with special features. Read more about the protocol and commands in section 12, Communicating with the Module and then move on to the Additional Reading in section 1.3.

### 1.2 Why a SkyeTek Module?

Many customers may wonder, "What value does a module add over an RFID transceiver chip?"

RFID transceiver chips may seem simple, but they actually require significant engineering time and capital investment to integrate. Transceiver chips contain up to 50 registers for configuration and functionality. In addition, communicating over air protocols such as ISO18000-6C is complex, described in nearly 150 pages of cryptic procedures. For example, just selecting a tag requires a minimum of 6 and up to 100 over air interactions with multiple tags present. SkyeTek has also optimized the complex RF chain to give the best performance and efficiency possible. **SkyeTek modules mask the complexities of RFID from the user and pack functionality into just a few commands.**

SkyeTek's core set of commands allow the user to read and write to tags with a single command, regardless of the tag type. The module is also field upgradable, so you can use the latest security algorithms and tag features as they are released. Power regulation and filtering for the radio are handled in the Nova, so you can supply voltage directly from an unregulated source like a battery. Finally, the Nova will be modularly approved by the FCC and CE, so you can bypass expensive radio testing at a certified test lab and avoid potential schedule delays due to failures.

**Using a SkyeTek module will greatly reduce time to market and upfront development costs.** Allow SkyeTek to take the burden of developing an RF system so you can focus your energy on your core products.

### 1.3 Additional Reading

[SkyeTek Protocol v3 Reader Commands](#) – Application note with descriptions and examples of the reader commands: read/write system, read/write default system, load defaults, and reset.

### 1.4 Revision History

Revision	Author	Change
031014	Josh Peifer	Initial draft.
Rev 1.0	Mark Matlin	Initial Release
Rev 1.1	Mark Matlin	Added Regulatory Section
Rev 1.2	Mark Matlin	Incorporated TCB changes
Rev 1.3	Mark Matlin	Updated recommended antennas for reverse polarity
Rev 1.4	Mark Matlin	Updated MPE distance to 23cm for IC

**Table 1-1: Revision History**

## 2 Definition of Terms

3DES	Triple Data Encryption Standard
AES	Advanced Encryption Standard
API	Application Programming Interface
DES	Data Encryption Standard
GPIO	General Purpose Input/Output
HID	Human Interface Device
I <sup>2</sup> C	Inter-integrated Circuit
LSB	Least Significant Bit
MSB	Most Significant Bit
NC	No Connect
RoHS	Reduction of Hazardous Substances
SPI	Serial Peripheral Interface
SSEL	Slave Select
STP V3	SkyeTek Protocol Version 3
TTL	Transistor-transistor Logic



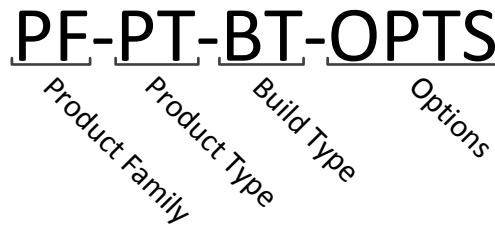
### 3 Ordering Information

#### 3.1 Nova Standard Part Numbers

Part Number	Host Interface	Baud Rate	Description
SM-NV-00	USB (HID)	12Mbps	Mini PCI express connector

**Table 3-1: Nova Standard Part Numbers**

The Nova part number is constructed according to the SkyeTek part number specification below:



**Figure 3-1: SkyeTek Part Number Format**

Code	Options	Description
Product Family	SM = SkyeModule	Highest level product family code.
Product Type	NV = NOVA	Specifies the specific part type.
Build Type		Specifies hardware form factor.
Options	Blank = Standard	This field is left for special customer part numbers or standard variations such I2C for I2C as the default host interface. Consult the SkyeTek sales team for custom orders.

**Table 3-2: Part Number Details**

#### 3.2 How to Buy

SkyeTek products are available through a worldwide distribution network including Digikey, Mouser and Atlas RFID. Products are also available directly from SkyeTek. For more information on how to purchase SkyeTek products in your area, please visit the [How To Buy](http://www.skyetek.com/howtobuy) page on the SkyeTek website at [www.skyetek.com/howtobuy](http://www.skyetek.com/howtobuy).

## 4 SkyeModule Nova Overview

### 4.1 Description

The SkyeModule™ Nova marks the next generation of SkyeTek UHF reader modules. The Nova is an ultra-small, 2 port, 500mW EPC Class 1 Gen 2 reader/writer module. A cutting edge ARM Cortex microcontroller, latest UHF transceiver technology and cutting edge adaptive antenna tuning coupled with the reader's intelligent operating system make this module the most powerful and feature rich UHF reader module of its size. Manufactured in accordance with ISO 9001 and ISO 13485, quality is a top priority for all SkyeTek modules.



Figure 4-1: SM-NV

### 4.2 Block Diagram

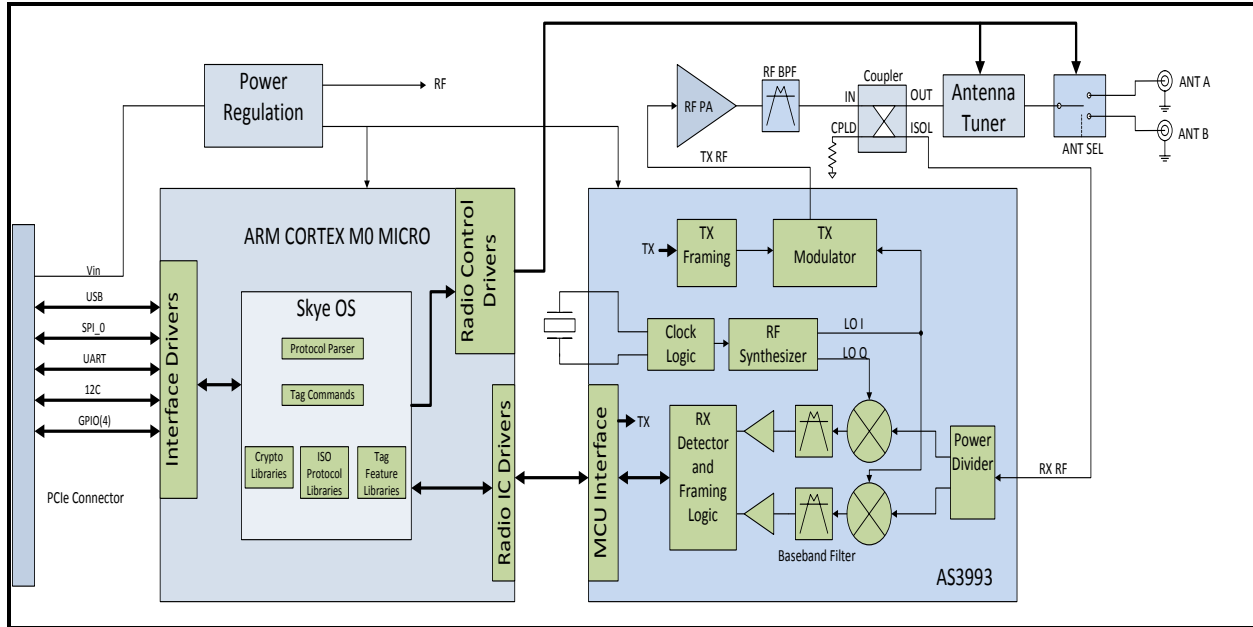


Figure 4-2: SkyeModule Nova Block Diagram

### 4.3 Features

- Selects, Reads and writes to transponders based on EPC Global Class 1 Gen 2v2 (ISO 18000-6C)
- 2 antenna ports, each capable of 500mW output power
- Adaptive Antenna Tuning
- Can operate from 500mA USB port
- Modular certification for USA and Canada
- CE Mark
- Mini PCIe half card form factor
- Wide and efficient power supply with input from 2.5 – 5.5V
- Deep sleep mode current down to 10uA
- Easy migration from the SkyeModules M7/M9/M10
- Supported host interfaces include USB, TTL level RS232, SPI, I2C
- Return Signal Strength Indicator (RSSI)

### 4.4 Applications

- Mobile Computing
- Inventory and Asset Management
  - Retail Inventory
  - In Transit Inventory
- Access Control

4.5 Agency Approvals

- RoHS 2
- FCC Modular
- IC Modular
- CE Mark
- UL
- Manufactured according to ISO9001 and ISO13485

5 Mechanical Specifications

Dimensions: 26.8 mm x 30 mm = 804mm<sup>2</sup>  
 Height: 5.5 mm

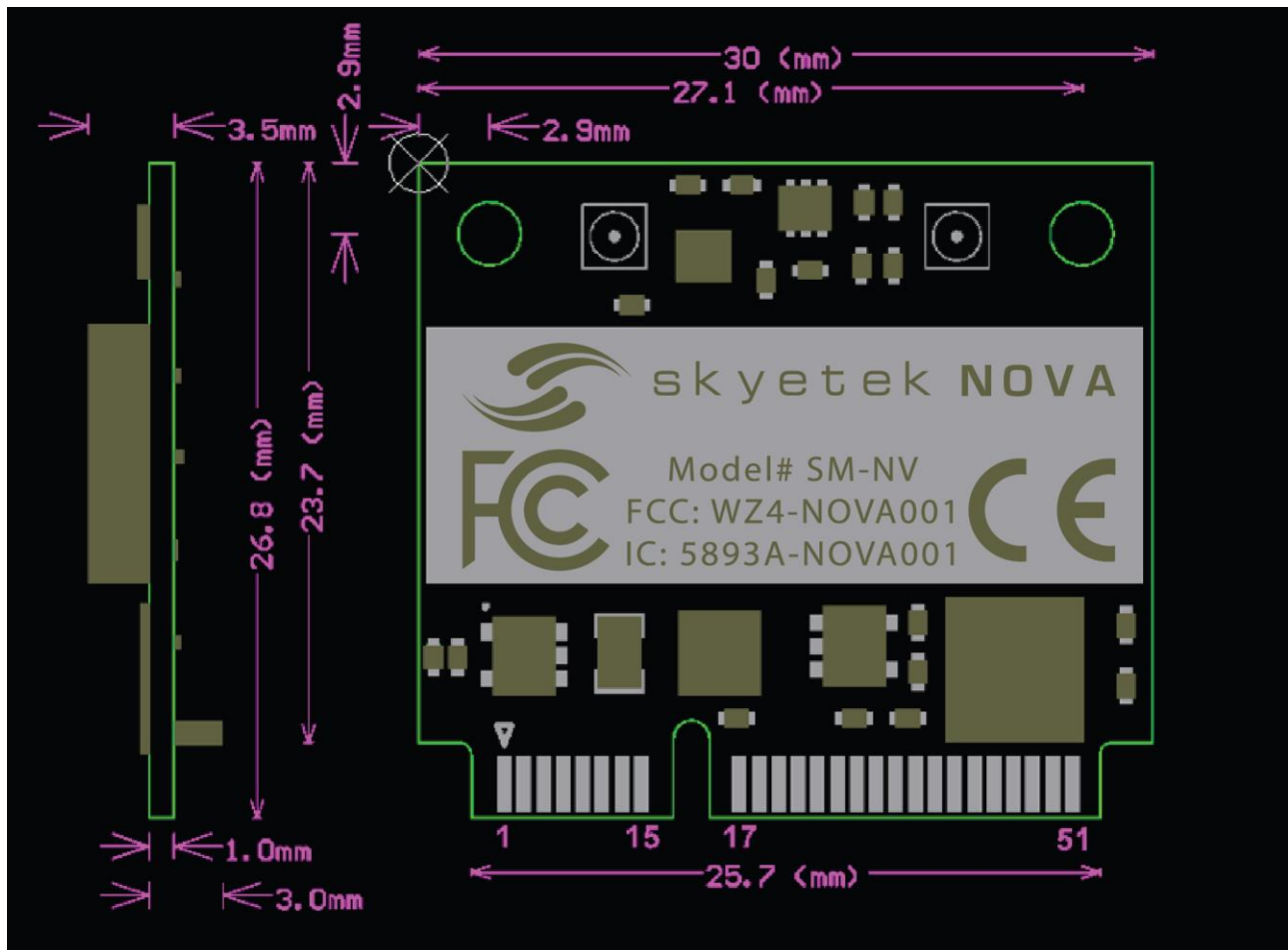


Figure 5-1: SM-NV Mechanical Drawing

Note that the Nova complies with the PCI Express (PCIe) Mini form factor. Detailed information on this standard is available at <https://www.pcisig.com/specifications>. Mating board edge connectors are available from numerous vendors including JAE, Molex and TE connectivity (see table below). The pin numbering convention is shown in the

drawing above, with odd numbered pins on the top, and even numbered pins on the bottom of the board. Pin 2 is directly below pin 1. Pinning Information

## 5.1 Connector Descriptions

The SM-NV-00 is the standard version of the Nova module and uses the 52 pin Mini PCIe connector. In addition, the Nova features two antenna ports that connect via U.FL connectors. A sampling of mating connectors is listed below:

Nova Connector	Description	Ref Des	Man.	Mating Connector	Notes
52 pin Mini PCIe	Host interface connector	J1	Molex	0679101002	
			JAE	MM60-52B1-G1-R850	
			TE Connectivity	1717831-1	
U.FL Jack	Antenna Connector (Port0, Port1)	J2, J3	Taoglas	CAB.011	U.FL to SMA
			Digi International	JF1R6-CR3041	U.FL to SMA

**Table 5-1: SkyeModule Nova Connector Recommendations**

## 5.2 Host Interface Connector Pin Mapping

The SkyeModule Nova host connector is a 52-pin Mini PCI Express edge connector. The pin numbers are located as illustrated in Figure 5-2 above. The pin mappings and descriptions are shown in **Error! Reference source not found.** Note that all unconnected pins should be left floating.

Figure 5-2: Host Interface Connector Pin Numbering

Pin	Name	Description	I/O	Pin	Name	Description	I/O
1	NC	Not Connected	N/A	2	VIN	Input Power Supply	Input
3	NC	Not Connected	N/A	4	GND	Ground	Input
5	NC	Not Connected	N/A	6	NC	Not Connected	N/A
7	NC	Not Connected	N/A	8	MISO	SPI Master In, Slave Out	Output
9	GND	Ground	Input	10	MOSI	SPI Master Out, Slave In	Input
11	NC	Not Connected	N/A	12	SCK	SPI Clock IN	Input
13	NC	Not Connected	N/A	14	SSEL	SPI Slave Select	Input
15	GND	Ground	Input	16	NC	Not Connected	N/A
17	NC	Not Connected	N/A	18	GND	Ground	Input
19	NC	Not Connected	N/A	20	Deep Sleep	Active Low Deep Sleep	Input
21	GND	Ground	Input	22	Reset	Active Low Reset	Input
23	NC	Not Connected	N/A	24	VIN	Input Power Supply	Input
25	NC	Not Connected	N/A	26	GND	Ground	Input
27	GND	Ground	Input	28	NC	Not Connected	N/A
29	GND	Ground	Input	30	SCL	I2C Clock	Input
31	NC	Not Connected	N/A	32	SDA	I2C Data	I/O
33	NC	Not Connected	N/A	34	GND	Ground	Input
35	GND	Ground	Input	36	D-	USB D minus	I/O
37	GND	Ground	Input	38	D +	USB D Plus	I/O
39	VIN	Input Power Supply	Input	40	GND	Ground	Input
41	VIN	Input Power Supply	Input	42	GPIO0	General Purpose I/O 0	I/O
43	GND	Ground	Input	44	GPIO1	General Purpose I/O 1	I/O
45	GPIO3	General Purpose I/O 3	I/O	46	GPIO2	General Purpose I/O 2	I/O
47	NC	Not Connected	N/A	48	NC	Not Connected	N/A
49	RXD	UART Receive	Input	50	GND	Ground	Input
51	TXD	UART Transmit	Output	52	VIN	Input Power Supply	Input

### 5.3 Using the GPIO Pins

You can use the User Port Direction and User Port Value system parameters to address the GPIO pins to set the user port direction (input or output) and the user port value (high or low). For more information, see the following:

- “User Port Direction” in section 13.3.9
- “User Port Value” in section 13.3.10

---

**NOTE** – GPIO3 is used as a data ready pin when in SPI or I<sup>2</sup>C mode. GPIO3 cannot be used as GPIO when using these interfaces.

---

## 6 Electrical Specifications

This chapter discusses the electrical specifications of the SkyeModule Nova. Unless otherwise noted, the following assumptions apply to these specifications:

- Temperature is 25 degrees Celsius.
- Frequency is 915 MHz.
- Supply voltage (VCC) is 5 V.

### 6.1 Electrical Characteristics

Specification	Min	Typ	Max	Units/Notes
<b>RF Characteristics</b>				
Frequency range (Direct output)		860-960		MHz
<b>Transmit Parameters</b>				
RF Transmit Output Power (Peak)		500		mW (27dBm)
RF Transmit Output Power Adjustment Range		17		10dBm - 27dBm
Transmit Power Adjustment Accuracy		+/- 1	+/- 2.5	dBm
Optimum PA Load Impedance		50		Ohms
Antenna Tuning Range		1.5:1		VSWR
<b>Receive Parameters</b>				
Receive Sensitivity		-85		dBm
<b>Logic Inputs</b>				
High state input voltage	2.3		5.0	V
Low state input voltage	0		1	V
Input Current (IINH/IINL)			10	nA
<b>Logic Outputs</b>				
Output High Voltage (VOH)	2.8	3.3	3.6	V (IOH=4mA)
Output Low Voltage (VOL)		0	0.4	V (IOH=-4mA)
Output Current (IINH/IINL)	+/- 4			mA
<b>Power Supplies</b>				
Voltage Supply	2.5		5.5	V
Idle Current @ 5V Supply		155		mA
Continuous Transmit Current @ 5V Supply		450		mA
Low Power Software Sleep Mode Current @ 5V Supply		10		mA
Deep Sleep Mode Current @ 5V Supply		5		uA

**Table 6-1: SkyeModule Nova Electrical Specifications**

## 6.2 Absolute Maximum Ratings

Specification	Rating
V <sub>SUPPLY</sub> to GND	7.0 V
Digital I/O voltage to GND	5.5 V

Table 6-2: Absolute Maximum Ratings

## 7 Environmental Specifications

### 7.1 Electrostatic Precautions



**CAUTION** – Failure to take proper electrostatic precautions may result in damage to or failure of your SkyeModule Nova.

The SkyeModule Nova contains static-sensitive parts. Observe the following precautions to prevent damage to these parts.

- Wear a static grounding strap when handling electronic control components.
- Keep all plastic, vinyl, and Styrofoam (except antistatic versions) away from printed circuit boards.
- Do not touch the components or conductors on a printed circuit board with your hands or with conductive devices.

### 7.2 General Ratings and Operating Conditions

Specification	Rating
<b>Temperature range</b>	
Operating	-20 to +70 degrees C
Storage	-40 to +125 degrees C
<b>Humidity</b>	
Operating, continuous storage	10-90 percent (non-condensing)
Transient storage (<24 hours)	5-95 percent maximum (non-condensing)
<b>ESD protection</b>	< 1kV (ESD HBM 15500 Ω, 100pF) —or— 100V (ESD MM 0.75uH, 200pF)

Table 7-1: Environmental Ratings/Operating Conditions



## 8 System Performance

### 8.1 System Range

The range measurements below should be used as a guideline and not a guarantee. Environment can play a major role on tag range performance. Be sure to avoid any conductor in or near the field, as eddy currents can significantly reduce energy transfer between the reader antenna and the tag.

Measured Range with 6dBi Broad Band Antenna	Min	Typ	Max	Units/Notes
Avery Dennison Label, Monza 3 Chip		6	10	m

Figure 8-1: Range Measurements

## 9 Regulatory Approvals and Module Integration Guidelines

### 9.1 Agency Approvals

The SkyeModule Nova has been approved for use in the following regions:

Region	Applicable Rule	Identifier	Notes
USA	FCC 15.247	WZ4-NOVA001	Modular Approval
Canada	IC RSS 210-ANNEX 8	5893A-NOVA001	Modular Approval
EU	ETSI 302 208-1		

### 9.2 FCC/IC Guidelines (English)

The SkyeModule Nova module is provided with FCC and Industry Canada Modular Certification. This means that the module meets the intentional radiator emissions requirements of the FCC Part 15 and IC RSS-210 and the module integrator is not required to perform further testing, provided the following guidelines are met.

- An approved antenna is directly coupled to a Nova antenna port. If a different antenna of the same type is used, it must have the same or less gain than the approved antenna. A listing of approved antennas is shown below.
- End product must be externally labeled with “Contains FCC ID: WZ4-NOVA001 and IC: 5893A-NOVA001”
- The end products user’s manual must contain an FCC statement equivalent to that listed below in section 9.2.1
- The end product must not provide any information regarding installation, removal or modification of the module.

#### 9.2.1 Information to the User

The following information must be included in the end product’s user manual:

## FCC / IC NOTICES

This product contains FCC ID: WZ4-NOVA001 / IC: 5893A-NOVA001. This device complies with Part 15 of the FCC rules and Industry Canada license-exempt RSS standards. Operation of this device is subject to the following two conditions:

1. This device may not cause harmful interference, and
2. This device must accept any interference received, including interference that may cause undesired operation.

This equipment has been tested and found to comply with the limits for a Class B digital device, pursuant to Part 15 of the FCC Rules. These limits are designed to provide reasonable protection against harmful interference in a residential installation. This equipment generates, uses and can radiate radio frequency energy and, if not installed and used in accordance with the instructions, may cause harmful interference to radio communications. However, there is no guarantee that interference will not occur in a particular installation. If this equipment does cause harmful interference to radio or television reception, which can be determined by turning the equipment off and on, the user is encouraged to try to correct the interference by one or more of the following measures:

- Reorient or relocate the receiving antenna.
- Increase the separation between the equipment and receiver.
- Connect the equipment into an outlet on a circuit different from that to which the receiver is connected.
- Consult the dealer or an experienced radio/TV technician for help.

Any modifications could void the user's authority to operate the equipment.

## 9.2.2 Product Labeling

The end product must be labeled to meet the FCC and IC product label requirements. It must have text containing the following:

Contains FCC ID: WZ4-NOVA001 / IC: 5893A-NOVA001

The label must be permanently affixed to the product and readily visible to the user. “Permanently affixed” means that the label is etched, engraved, stamped, silkscreened, indelibly printed, or otherwise permanently marked on a permanently attached part of the equipment or on a nameplate of metal, plastic, or other material fastened to the equipment by welding, riveting, or a permanent adhesive. The label must be designed to last the expected lifetime of the equipment in the environment in which the equipment may be operated and must not be readily detachable.

## 9.2.3 RF Exposure Statement

To comply with FCC’s RF radiation exposure requirements, this device and its antenna(s) must operate at a distance of at least 20cm from all persons, and must not be co-located or operating in conjunction with any other antenna or transmitter.

To comply with IC’s RF radiation exposure requirements, this device, when operated with the Linearly Polarized Panel or Circularly Polarized Panel antenna listed below, or any similar high gain panel antenna, must maintain a separation distance of at least 23cm from all persons, and must not be co-located or operating in conjunction with any other antenna or transmitter. To comply with IC’s RF radiation exposure requirements, this device, when operated with all antennas, must maintain a separation distance of at least 20cm from all persons, and must not be co-located or operating in conjunction with any other antenna or transmitter.

## 9.2.4 Antenna Selection

IC Statement:

This radio transmitter (5893A-NOVA001) has been approved by Industry Canada to operate with the antenna types listed below with the maximum permissible gain indicated. Antenna types not included in this list, having a gain greater than the maximum gain indicated for that type, are strictly prohibited for use with this device.

As part of the Modular Certification, the SkyeModule Nova was tested and approved for use with the following antennas. All of these antennas incorporate connectors that are “non-standard” per FCC 15.203.

Antenna Type	Peak Gain	Manufacturer	P/N	Connector
Linearly Polarized Panel	9dBi	Laird	PAV90209-HFRTN	RP-TNC
Circularly Polarized Panel	9dBi	Laird	PAL90209H-HFRTN	RP-TNC
Dipole	5.4dBi	Linx Technologies	ANT-916-MHW-RPS-S	RP-SMA
Planar Inverted F (PIFA)	2dBi	Proprietary	Proprietary	U.FL

Under FCC and Industry Canada regulations, the SkyeModule Nova may only operate using an antenna type and maximum (or lesser) gain than that approved for these antennas by the FCC and Industry Canada.

Other antennas types may be used, however they will not be recognized under this Modular Certification and additional regulatory testing will be necessary. In all cases, the maximum total gain (antenna + cable) permissible for use with the SkyeModule Nova will be 9dBi, which achieves the maximum field strength permitted by the FCC in the 902 – 928 MHz ISM band.

The Nova module is provided with a U.FL connector which has been determined to be “non-standard” complying with FCC 15.203. Any antenna connection which is available to the end user must be “non-standard” so that user may not easily connect a higher gain antenna than is permissible above.

### 9.2.5 Unintentional Radiator Testing

The SkyeModule Nova module was tested to and complies with the unintentional radiator requirements of FCC sections 15.107 and 15.109 and Industry Canada license exempt RSS standards. When integrated within final product, additional unintentional radiator testing may be required.

## 9.3 FCC/IC Guidelines (Français)

Le module SkyeModule Nova est fourni avec FCC et Industrie Canada modulaire certification. Cela signifie que le module répond aux exigences d'émissions intentionnelles de radiateur de la FCC Part 15 et IC RSS-210 et le module intégrateur ne est pas nécessaire d'effectuer des tests supplémentaires, à condition que les lignes directrices suivantes sont remplies.

- Une antenne approuvé est couplé directement à un port d'antenne Nova. Si une autre antenne du même type est utilisé, il doit avoir le même ou moins de gain de l'antenne approuvé. Une liste des antennes approuvés est indiqué ci-dessous.
- Le produit final doit être étiqueté avec l'extérieur "Contient FCC ID: WZ4-NOVA001 et IC: 5893A-NOVA001"
- Le manuel de l'utilisateur des produits finis doivent contenir une déclaration de la FCC équivalent à celui ci-dessous dans la section 9.3.1
- e manuel de L'Utilisateur des Produits finis doivent contain Une déclaration de la FCC équivalent à celui ci-dessous Dans la section 9.3.1

### 9.3.1 Informations utilisateur

Les renseignements suivants doivent être inclus dans le manuel d'utilisation de produit de fin :

## AVIS FCC / IC

Ce produit contient FCC ID: WZ4-NOVA001 / IC: 5893A-NOVA001. Cet appareil est conforme à la partie 15 des règles de la FCC et d'Industrie Canada RSS normes exemptes de licence. Le fonctionnement de cet appareil est soumis à la deux conditions suivantes:

1. Ce dispositif ne doit pas causer d'interférences nuisibles et
2. Cet appareil doit accepter toute interférence reçue, y compris les interférences qui peuvent causer un mauvais fonctionnement.

Cet équipement a été testé et déclaré conforme aux limites d'un appareil numérique de classe B, conformément à la partie 15 des règles de la FCC. Ces limites sont conçues pour fournir une protection raisonnable contre les interférences nuisibles dans une installation résidentielle. Cet équipement génère, utilise et peut émettre de l'énergie radiofréquence et, se il ne est pas installé et utilisé conformément aux instructions, peut causer des interférences nuisibles aux communications radio. Cependant, il ne est pas garanti que des interférences ne se produiront pas dans une installation particulière. Si cet équipement provoque des interférences nuisibles à la réception radio ou de télévision, ce qui peut être déterminé en mettant l'équipement hors et sous tension, l'utilisateur est encouragé à essayer de corriger l'interférence par une ou plusieurs des mesures suivantes:

- Réorienter ou déplacer l'antenne de réception.
- Augmentez la distance entre l'équipement et le récepteur.
- Branchez l'appareil dans une prise sur un circuit différent de celui sur lequel le récepteur est branché.
- Consulter le revendeur ou un technicien radio / TV expérimenté.

Toute modification peut annuler le droit de l'utilisateur à utiliser l'équipement.

### 9.3.2 Étiquetage de produit

Le produit final doit être étiqueté pour répondre aux exigences de l'étiquette du produit FCC et IC. Il doit avoir le texte contenant les éléments suivants:

Contains FCC ID: WZ4-NOVA001 / IC: 5893A-NOVA001

L'étiquette doit être apposée en permanence sur le produit et facilement visible pour l'utilisateur. " Fixé en permanence " signifie que l'étiquette est gravé, gravé, estampé, sérigraphié, indélébile, ou autrement de façon permanente sur une partie fixée de façon permanente de l'équipement ou sur une plaque de métal, de plastique, ou autre matériau fixé à l'équipement par soudage, rivetage ou d'un adhésif permanent. L'étiquette doit être conçu pour durer toute la durée de vie prévue de l'équipement dans l'environnement dans lequel l'équipement peut être utilisé et ne doit pas être facilement détachable.

### 9.3.3 Déclaration d'exposition aux RF

Pour se conformer à l'exposition aux rayonnements RF aux exigences de la FCC, cet appareil et son antenne (s) doit fonctionner à une distance d'au moins 20 cm de toutes les personnes, et ne doit pas être co-située ni fonctionner en conjonction avec une autre antenne ou émetteur.

Pour se conformer à exposition aux radiations RF les exigences d'IC, cet appareil, en cas d'utilisation avec le panneau polarisé linéairement ou antenne Panneau polarisée circulairement énumérés ci-dessous, ou de toute antenne similaire panel de haut gain, doit maintenir une distance de séparation d'au moins 23cm de toutes les personnes, et doit pas être co-située ni fonctionner en conjonction avec une autre antenne ou émetteur.

### 9.3.4 Antenne Sélection

Cet émetteur radio (5893A-NOVA001) a été approuvé par Industrie Canada pour fonctionner avec les types d'antenne énumérés ci-dessous avec le gain maximal admissible indiquée. Types d'antennes ne figurant pas dans cette liste, ayant un gain supérieur au gain maximum indiqué pour ce type, sont strictement interdits pour une utilisation avec cet appareil.

Antenna Type	Peak Gain	Manufacturer	P/N	Connector
Linearly Polarized Panel	9dBi	Laird	PAV90209-HFRTN	RP-TNC
Circularly Polarized Panel	9dBi	Laird	PAL90209H-HFRTN	RP-TNC
Dipole	5.4dBi	Linx Technologies	ANT-916-MHW-RPS-S	RP-SMA
Planar Inverted F (PIFA)	2dBi	Proprietary	Proprietary	U.FL

En vertu des règlements de la FCC et d'Industrie Canada, la Nouvelle-SkyeModule ne peut fonctionner en utilisant un type et maximum (ou moins) antenne à gain approuvé pour l'émetteur par la FCC et d'Industrie Canada.

Autres types d'antennes peuvent être utilisés, mais ils ne seront pas reconnus en vertu du présent certification modulaire et essais réglementaires supplémentaires seront nécessaires. Dans tous les cas, le gain total maximum (antenne + câble) autorisé pour une utilisation avec la Nouvelle-SkyeModule sera 9dBi, qui réalise l'intensité de champ maximale permise par la FCC dans le 902 - 928 MHz bande ISM.

### 9.3.5 Test radiateur involontaire

Le module a été testé SkyeModule Nouvelle et qui se conforme aux exigences de radiateur involontaires de sections FCC 15,107 et 15,109 et licences Industrie Canada RSS exemptés normes. Lorsqu'il est intégré au sein de produit final, des tests supplémentaires de radiateur involontaire peut être nécessaire.

## 9.4 EU Guidelines

The SkyeModule Nova was tested to the standards defined by ETSI 302 208-1 (Electromagnetic compatibility and Radio spectrum Matters; Radio Frequency Identification Equipment operating in the band 865 MHz to 868 MHz with power levels up to 2 W).

In order to market and sell product in the European markets, manufacturers need to demonstrate compliance using a Declaration of Conformity. Unlike the United States, there is no certification process through a regulating body. Instead, manufacturers have the sole responsibility of ensuring their products are compliant to the applicable directives and standards.

Also, unlike the USA and Canada, there are no “Modular Approval” rules under the ETSI standards, and the integrator must either declare conformity of the entire system based on the testing of the module, or perform additional testing with the complete integrated system including antenna(s). Since conducted testing was performed with the module, it is straightforward to show compliance with a particular antenna based on its radiation characteristics. Upon request, Skyetek will provide ETSI test data and reports as necessary to aid in showing compliance to the ETSI standards when the Nova is integrated within the final product. Skyetek can also provide it's Declaration of Conformity (DoC), if requested. In addition, Skyetek engineers are available to assist in EU compliance matters.

## 10 Host Interface Specifications

The SkyeModule Nova supports the following microcontroller host interfaces for easy integration into existing systems:

- USB (Overrides other interfaces when connected)
- TTL Serial
- SPI
- I<sup>2</sup>C

The SkyeModule Nova and the host interface board support TTL Serial and USB communications. The host interface board provides a USB connector and a TTL to RS-232 level converter for the TTL Serial host interface. The Host Interface system parameter determines which host interface is used for communication with the host. Each interface is software selectable and only one host interface is active at a time, however, USB may always be connected and overrides the current interface. The host interface is selected based on the

power-up default value and can be changed at run time. The SkyeModule Nova operates under host control using SkyeTek Protocol v3 sent over one of the host interfaces described in this chapter.

The following sections describe the power and host communication connections for the SkyeModule Nova. The SkyeTek Protocol and commands are described further in section 12, Communicating with the Module.



10.1 USB 2.0

As a USB device, the host detects the SkyeModule Nova as an HID device. The SkyeModule Nova uses a standard HID driver but is not a certified USB device. The SkyeModule Nova supports both standard and high speed USB hosts and enumerates correctly on both Windows and UNIX platforms. The USB interface is typically only used for demonstration as a USB host controller is not usually available in embedded systems. To communicate with the reader in USB mode, either SkyeTek (Skyeware) demonstration software or the SkyeTek APIs can be used. See the SkyeTek support site for the latest software and API downloads at [support.skyetek.com](http://support.skyetek.com).

Figure 10-1 shows an example of a circuit to permit USB communications without using the host interface board.

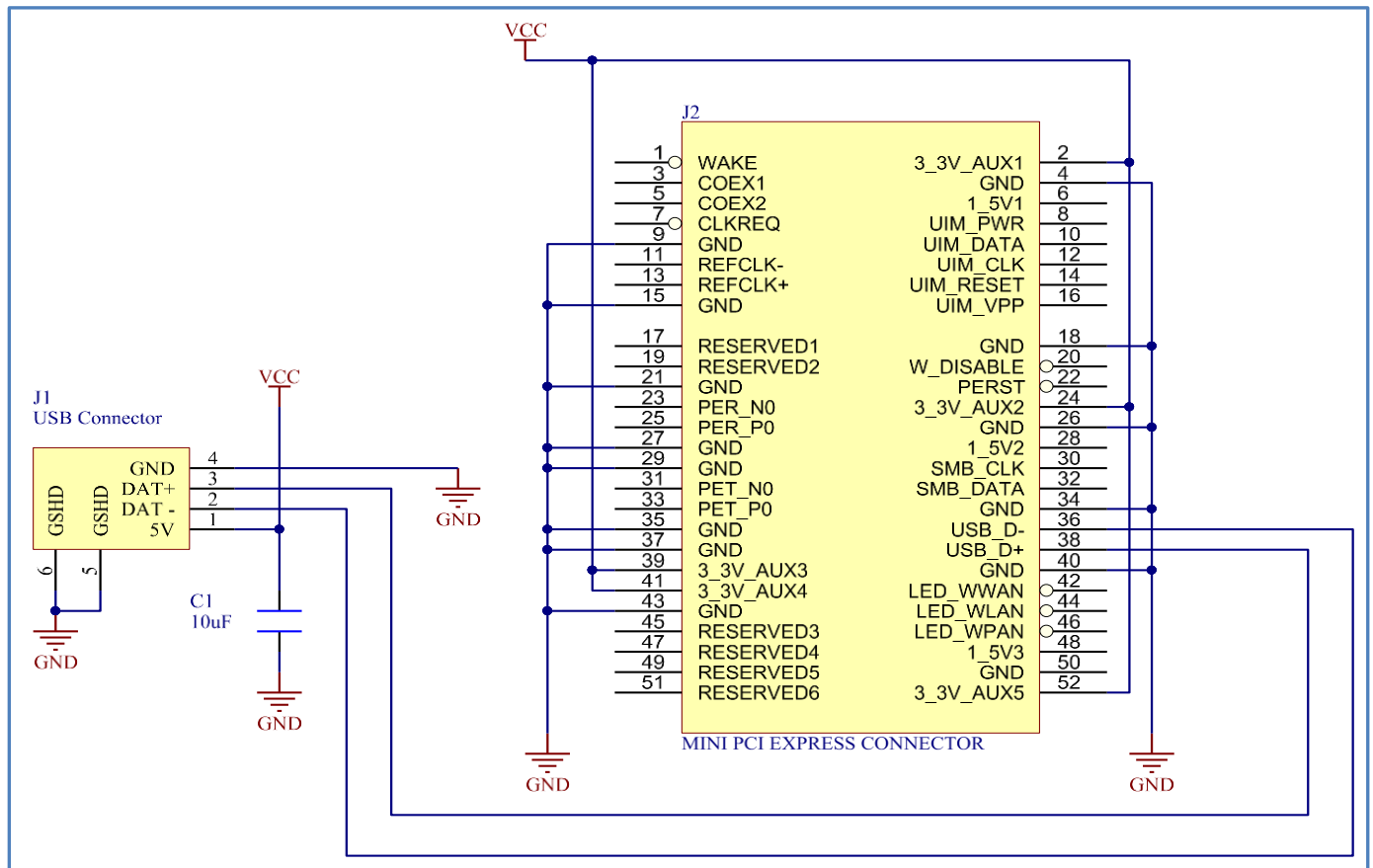


Figure 10-1: USB Connection Diagram

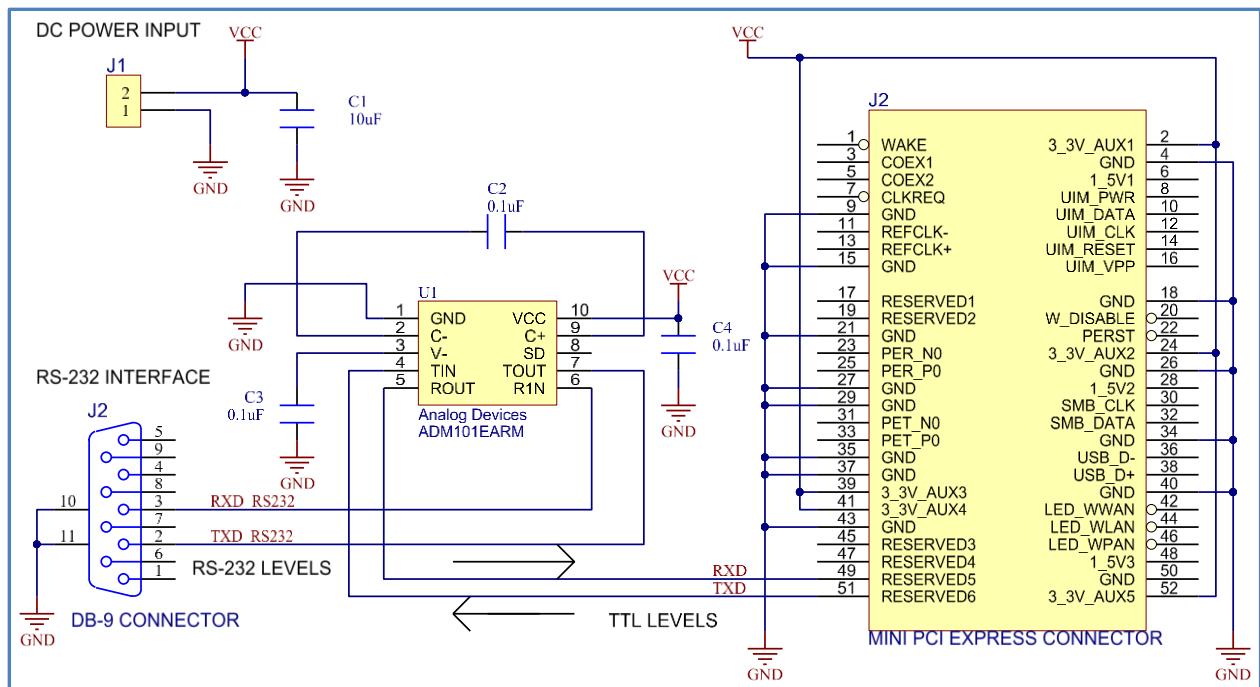
**NOTE** – If powered by USB, the USB host must be capable of supplying the USB standard high power device, 500mA at 5V. Also, the Nova will always communicate via USB, when a USB host is connected.

10.2 TTL Serial

A two-wire serial connection (no handshaking) is provided on the TXD and RXD lines where TXD and RXD are from the module's point of view. Data exchange between the host and the SkyeModule Nova occurs according to SkyeTek Protocol v3 (ASCII or Binary mode). See more about the protocol in section 12, Communicating with the Module.

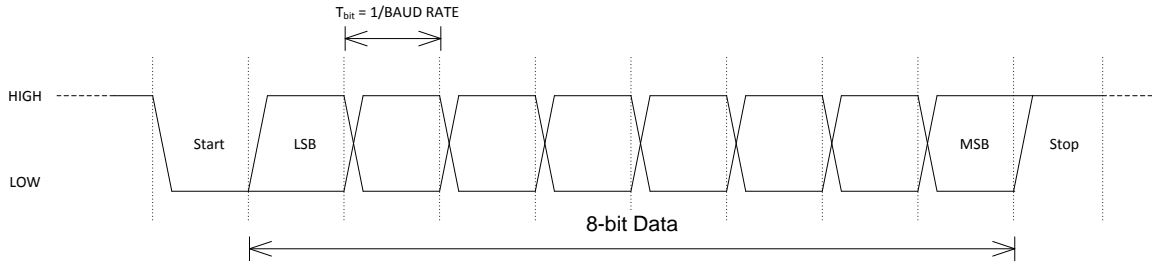
Serial communication is the most common and robust host interface for this module in an embedded system. Because the interface is asynchronous, the module responds immediately upon command completion instead of waiting for a host clock as in SPI or I<sup>2</sup>C.

Figure 10-2 shows a sample circuit that lets you connect the SkyeModule Nova without the host interface board. This circuit uses an RS232 to TTL level converter to allow connection to a PC serial port. For direct connection to a micro serial interface (using TTL/CMOS levels), simply connect directly to pins 49 and 51 of the Mini PCI express connector. Figure 10-3 shows examples of typical communication on a signal level.



[PICTURE]

Figure 10-2: Serial Connection Diagram



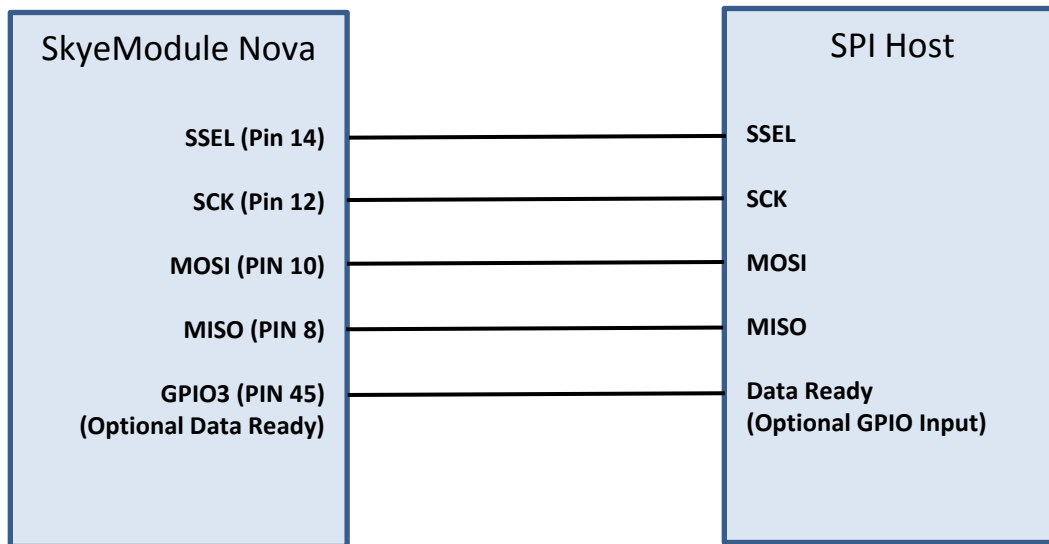
**Figure 10-3: TTL Serial Timing Diagram**

**Notes:**

- Baud rate is selectable via the appropriate system parameter. Preprogrammed factory **default baud rate is 38,400 Baud**.
- Bytes are transmitted least-significant bit (LSB) first using the typical serial data format of *Start Bit* followed by *8 data bits* followed by a *Stop Bit*.
- The TTL Serial connection supports bit rates from 9,600 to 115,200 Baud, 8 data bits, no parity, 1 stop bit.
- Host to reader interface shall be TTL level (non-inverted). Both **3.3V and 5V logic levels are allowed**. See logic levels in section **Error! Reference source not found., Error! Reference source not found.**

## 10.3 SPI

The SkyeModule Nova provides a simple four-wire SPI host interface. There is also an optional data ready signal to indicate that the current command is complete and data is available for the host. Figure 10-4 shows an example of a host interface connection using SPI. Power and ground lines are omitted from this drawing for simplicity. Please refer to Figure 10-1 for power and ground connection details.

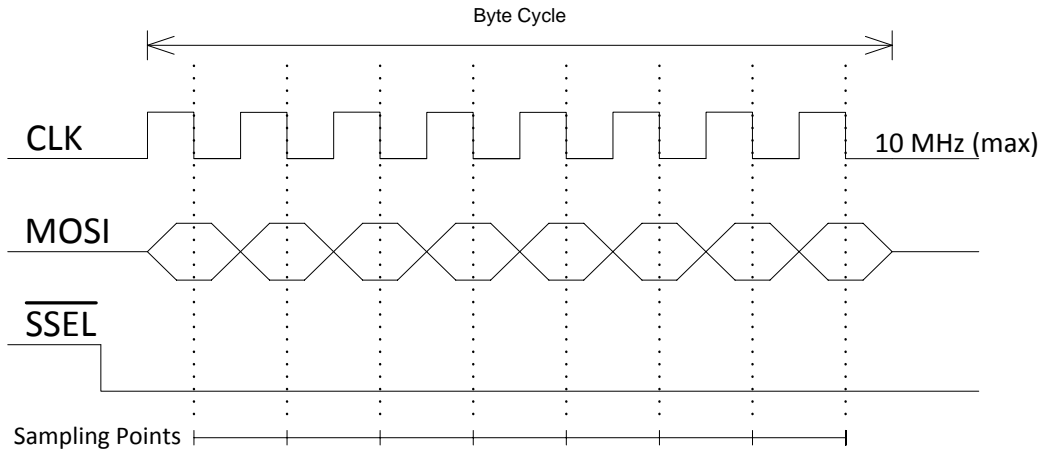


**Figure 10-4: SPI Simplified Connection Diagram**

The protocol for requests to the SkyeModule Nova is outlined below:

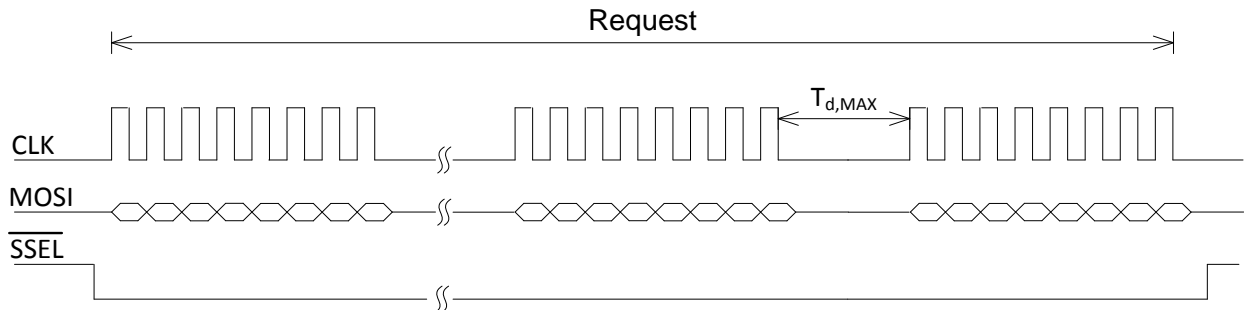
- The data packet exchange between the host (SPI Master) and the Nova (SPI Slave) uses SkyeTek Protocol v3 (Binary Mode only). See more about the protocol in section 12, Communicating with the Module.
- The host must implement SPI master functionality.
- The SCK line is the master clock controlled by the host and should remain low during idle state.
- The slave select line is active low.
- The data is setup on the rising edge of SCK.
- The message data is latched on the falling edge of SCK.
- The MOSI signal line provides the data from the host to the SkyeModule Nova.
- Supports data rates **up to 4 MBit**
- Both **3.3V and 5V logic levels are allowed**. See logic levels in section **Error! Reference source not found.**, **Error! Reference source not found.**

The timing diagram in Figure 10-5 illustrates this behavior.



**Figure 10-5: SPI Request Setup and Sample Timing**

- For the request data on the MOSI line, the host software should keep the SSEL pin at steady state low as shown in Figure 10-6 below.
- The time delay  $T_{d,MAX}$  between byte cycles in a request should not exceed 5 ms. After 5 ms the SkyeModule Nova will timeout, signifying the end of the request.

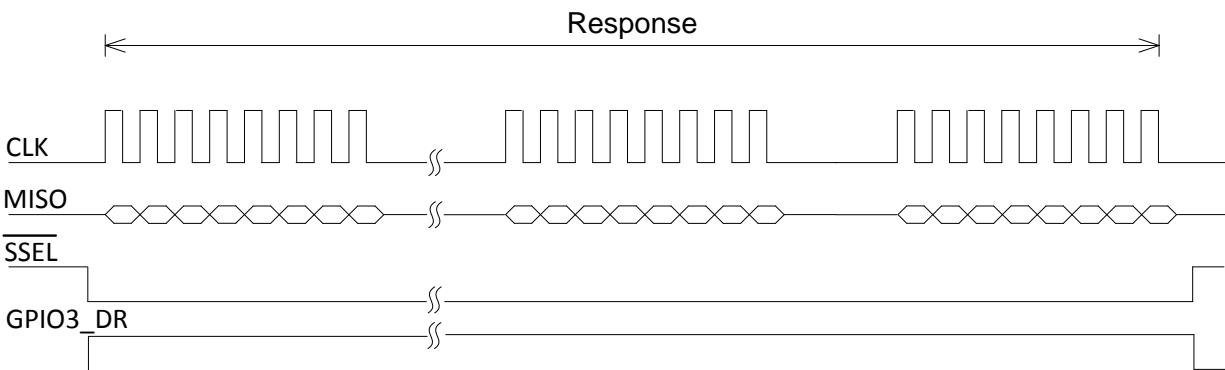


**Figure 10-6: SPI Request Timing**

The protocol for retrieving the response data is outlined below:

- The SkyeModule Nova is half duplex so the response data must be retrieved after the request has been sent.
- The GPIO3\_DR (data ready) signal will transition high when data is available for the host.
- If data ready is not implemented on the host, the host can poll the module starting 1ms after the command send is complete. The module will respond with 0x00 when no data is present, and 0x02 (start of frame) when data is available.
- Response data will be thrown away if not read within 10 seconds of becoming available.
- The MISO signal provides the response data from SkyeModule Nova to the host.
- To retrieve data on the MISO line, the SSEL (Slave Select) signal must be low when the clock is sent for an entire byte. Between bytes, SSEL can either stay low or transition high again as long as it transitions low before the first clock of the next byte.
- The host can use the data length field (response bytes 2 and 3) in order to determine how many bytes to read from the module as these first bytes will always be present immediately following a start of frame (0x02).

Figure 10-7 below shows the timing required to retrieve data on the MISO line.



**Figure 10-7: SPI Response Timing**

---

**NOTE** – Not reading the entire response before sending another command can cause undesired behavior. Always make sure to read the entire response when using the SPI interface.

---

10.4 I<sup>2</sup>C

The SkyeModule Nova supports can act as an I<sup>2</sup>C slave device. External pull up resistors are required on the SDA and SCL lines as shown in

Figure 10-8: I<sup>2</sup>C Connection Diagram. There is also an optional data ready signal to indicate that the current command is complete and data is available for the host.

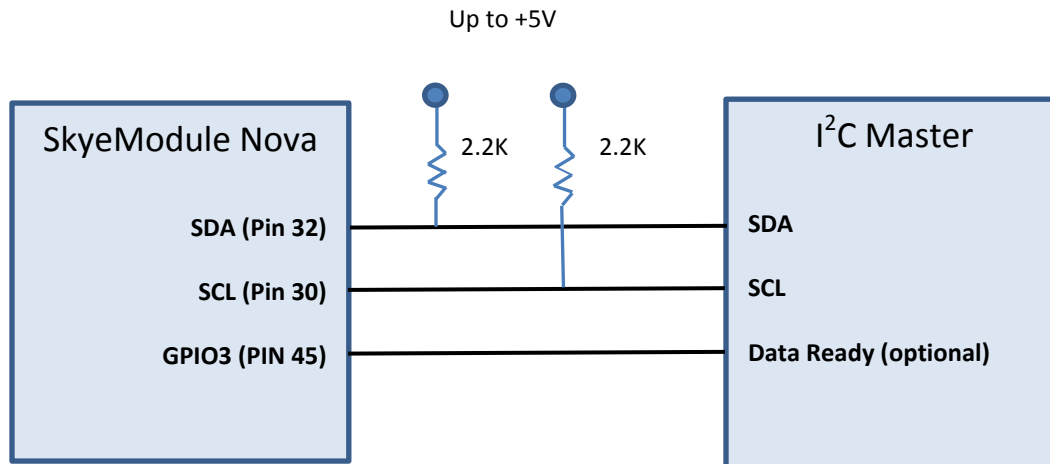


Figure 10-8: I<sup>2</sup>C Connection Diagram

The protocol for communicating via I<sup>2</sup>C is outlined below:

- The I<sup>2</sup>C interface uses a standard two-wire connection in which SCL is the master clock and SDA is a bidirectional serial data line.
- The data packet exchange between the host (I<sup>2</sup>C Master) and the Nova (I<sup>2</sup>C Slave) uses SkyeTek Protocol v3 (Binary Mode only). See more about the protocol in section 12, Communicating with the Module.
- I<sup>2</sup>C fast mode plus (1MHz), I<sup>2</sup>C fast mode (400 kHz), and 100kHz data rates are all supported.
- The data is sent and received MSB first.
- Up to 5V logic levels are allowed. See logic levels in section **Error! Reference source not found., Error! Reference source not found..**
- The device uses a 7-bit address
- The default **address = 0x7F**, but the address can be changed with the Reader ID system parameter. See more about this system parameter in section 13.3.5, Reader ID.

The communication scheme from host to module is as follows:

- Initiate a start condition (SDA transitions low while SCL is high).
- Send the nine bits of the initial start packet as follows:
  - Send the 7-bit address.
  - Send a write bit as the eighth bit (0 for writing from the host to the slave).
  - Send the ninth bit as the “acknowledge” bit (ACK)
  - If the reader recognizes the address, it pulls SDA low to acknowledge
- Use the bus to clock each byte of the SkyeTek protocol request.
- After sending the entire request, initiate a stop condition. (SCL transitions high, and then SDA transitions high while SCL is high)

Wait for command to complete:

- The GPIO3\_DR (data ready) signal will transition high when data is available for the host to read.
- If data ready is not implemented on the host, the host can poll the module after the request is sent. The module will NAK to a read while it is busy executing a command.

Communication scheme from module to host is as follows:

- Initiate a start condition. (SDA transitions low, and then SCL transitions low.)
- Send the nine bits of the initial start packet as follows:
  - Send the 7-bit address.
  - Send a read bit as the eighth bit (1 for reading from the slave to the host).
  - Send the ninth bit as the “acknowledge” bit (ACK)
  - If the reader recognizes the address, it pulls SDA low to acknowledge
  - If the address isn't recognized or the module is busy the SDA bit will remain high during the ACK bit.
- Clock each byte of the SkyeTek protocol response from the module.
- After receiving the response, is received, initiate a stop condition. (SDA transitions high while SCL is high.)
- SDA must transition while the clock is low and remain stable while the clock is high.
- Response data will be thrown away if not read within 10 seconds of becoming available.

Recommended response handler method #1 (polling):

- Read a single byte continuously until the reader ACKs and a 0x02, start of frame is received
- Read two bytes which contain the message length
- Read the remaining message length

Recommended response handler method #2 (using data ready signal):

- Poll on the data ready signal until it transitions high, indicating that data is present
- Read three bytes, the last two contain the message length
- Read the remaining message length



A timing diagram illustrating the I<sup>2</sup>C data transfer is shown in the figure below:

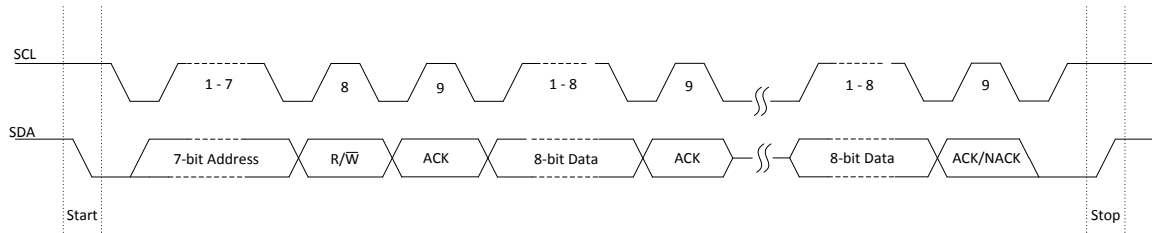


Figure 10-9: I<sup>2</sup>C Timing Diagram

**NOTE** – Not reading the entire response before sending another command can cause undesired behavior. Always make sure to read the entire response when using the I<sup>2</sup>C interface.

## 11 SkyeModule Nova Antenna Options

The SkyeModule Nova has 2 antenna ports to connect external antennas. The ports use an Ultra Miniature Connector (U.FL) to save space and cost. Any 50 ohm antenna in the appropriate frequency band (865-868MHz for Europe, 920-928MHz for North America) can be used with the Nova, however to maintain compliance with FCC/IC regulations, we recommend using those (or similar type) antennas specified in section 9 of this document in the USA and Canada.

The SkyeModule Nova also uses an advanced Adaptive Antenna Tuning circuit to ensure a quality impedance match with any antenna. The user can take advantage of this feature by first attaching the antenna to the port they would like to use, then sending a SkyeTek Protocol command to the Nova for it to execute its tuning sequence. The Nova will measure the reflected power caused by impedance mismatch and then will automatically compensate, delivering the maximum power to the antenna while reducing noise in the system.

**NOTE** – Read range depends on antenna choice and operating environment. Range can vary widely, depending on your choice of tag inlay and antenna gain.

## 12 Communicating with the Module

### 12.1 Host Communication (SkyeTek Protocol v3)

The SkyeModule Nova operates under control of a host according to SkyeTek Protocol v3. The basic command and response formats are illustrated for your reference in the following two sections 12.2 and 12.3. The best way to get started creating and understanding commands is to follow the application notes below while using the Protocol Builder in SkyeWare v4:

- [Nova Basic Tag Commands](#) – Guides you through the select tag, read tag and write tag commands.
- [SkyeTek Protocol v3 Reader Commands](#) – Explains how to read and write system parameters.

For more feature specific commands, use the tag specific application notes listed in the Additional Reading section 1.3.

For a quick reference on the protocol if you already know the command you want to use, see the [SkyeTek Protocol v3 Reference Guide](#). This provides detailed information on each command structure, error codes, and tags types. Be warned that this document is very lengthy as it details every command available for every SkyeTek module.

### 12.2 Request Formats

Flags	Cmd.	Tag Type	TID Len.	TID	Addr.	# of Blks.	Data Len.	Data	CRC
4	4	4	4	32 (max)	4	4	4	2K	4

Table 12-1: Request Format (bytes), ASCII Mode

Msg. Len.	Flags	Cmd.	Tag Type	TID Len.	TID	Addr.	# of Blks.	Data Len.	Data	CRC
2	2	2	2	1	32 (max)	2	2	2	1K	2

Table 12-2: Request Format (bytes), Binary Mode

	Required Fields (must be present at all times)
	Optional fields (depending on the command and flags)
	Required fields, depending on the command

12.3 Response Formats

Message Length	Response Code	Tag Type	Data Length	Response Data	CRC
2	2	2	2	1K	2

Table 12-3: Response Format (bytes), Binary Mode

	Required Fields (must be present at all times)
	Optional fields (depending on the command and flags)
	Required fields, depending on the command

## 13 System Parameters

### 13.1 System Parameter Summary

System parameters let you configure reader settings to customize the reader for your environment. You can temporarily alter parameters in memory or change the default values that are stored on the SkyeModule Nova's non-volatile memory. The following table summarizes the parameters. (See System Parameter Detail in section 13.3 for detailed information about each parameter)

Parameter Name	Address (hex)	Num. Blocks (hex)	Read/Write	Default Value
Serial Number	0x0000	0x0004	R	0x00000000
Firmware Version	0x0001	0x0004	R	0XXXXXXXX (depending on release)
Hardware Version	0x0002	0x0004	R	0XXXXXXXX (depending on release)
Product Code	0x0003	0x0002	R	0x0010
Reader ID	0x0004	0x0004	R/W	0xFFFFFFFF
Reader Name	0x0005	0x0032	R/W	SkyeModule Nova (in ASCII Format)
Host Interface Type	0x0006	0x0001	R/W	0x01 (TTL)
Interface Baud Rate	0x0007	0x0001	R/W	0x02 (38400)
User Port Direction	0x0008	0x0001	R/W	0x00
User Port Value	0x0009	0x0001	R/W	0x0F
MUX Control	0x000A	0x0001	R/W	0x00
Operating Mode	0x000C	0x0001	W	N/A
Tag Command Retries	0x0011	0x0001	R/W	0x03
Power Level	0x0012	0x0001	R/W	0xDC (27 dBm)
Current Frequency	0x0004	0x0004	R/W	0x3689CAC0 (915 MHz)
Start Frequency	0x0031	0x0004	R/W	0x35C80160 (902.3 MHz)
Stop Frequency	0x0032	0x0004	R/W	0x374B9420 (927.7 MHz)
Hop Channel Spacing	0x0034	0x0004	R/W	0x00030D40 (200 KHz)
Frequency Hopping Sequence	0x0035	0x0001	R/W	0x01 (pseudo-random)
Modulation Depth	0x0036	0x0001	R/W	0x64 (100%)
Regulatory Mode	0x0037	0x0001	R/W	0x00

**Table 13-1: SkyeModule Nova System Parameters**

## 13.2 Changing System Parameters



**CAUTION** – Changing system parameter values – especially the default values – can render your SkyeModule Nova non-operational in your environment. Research, record, and test all planned changes to make sure they are compatible with your system.

You can read or write system parameters via the following commands:

- Read System Parameter – Reads the current value of the system parameter at the memory address specified.
- Write System Parameter – Writes a new value to the system parameter at the memory address specified.
- Store Default System Parameter – Writes a new system parameter value to the non-volatile memory. This saves the setting even after a power cycle or reset.
- Retrieve Default System Parameter – Reads the system parameter value at the address specified out of non-volatile memory.

See System Parameter Detail in section 13.3 for detailed information about individual parameters.

For full examples of how to use these commands, see the system parameter examples found in the [Using SkyeProtocol V3 Reader Commands](#) application note.



**CAUTION** – Resetting (cycling power) on your SkyeModule Nova causes all system parameters to revert to their default values. Any changes made to system parameters in memory are lost at reset unless you write them to the non-volatile memory as the new default values. Any changes to the default values do not take effect until the reader is reset.

## 13.3 System Parameter Details

This section describes the SkyeModule Nova system parameters.

### 13.3.1 Serial Number

- Returns the serial number of the reader
- Parameter address: 0x0000
- Length (bytes): 4
- Default value: 0x00000000
- Read-only

### 13.3.2 Firmware Version

- Returns the firmware version currently loaded on the reader. (Refer to the [SkyeModule Nova Release Notes](#) for more information about the specific firmware release.)
- Refer to the [SkyeWare User Guide](#) for information about updating firmware.

- Parameter address: 0x0001
- Length (bytes): 4
- Default value: 0XXXXXXXX (depending on release)
- The firmware version uses this format:
  - Major revision (1 Byte)
  - Minor revision (1 Byte)
  - Current build number (2 bytes)
- Read-only

### 13.3.3 Hardware Version

- Returns the current hardware version of the reader
- Parameter address: 0x0002
- Length (bytes): 4
- Default value: 0XXXXXXXX (depending on release)
- The hardware version uses the following format:
  - Major revision (1 Byte)
  - Minor revision (1 Byte)
  - Current build number (2 bytes)
- Read-only

### 13.3.4 Product Code

- Returns the SkyeTek product code identifier. (Each SkyeTek Product has a unique product code.)
- Parameter address: 0x0003
- Length (bytes): 2
- Default value: 0x0010
- Read-only

### 13.3.5 Reader ID

- This was used for a deprecated SkyeTek protocol feature. It is now used as the I<sup>2</sup>C address of the reader in I<sup>2</sup>C mode. The least significant 7 bits of the reader ID act as the 7-bit I<sup>2</sup>C address.
- Example: A value of 0x000001B would indicate an I<sup>2</sup>C address of 0x1B
- Parameter address: 0x0004
- Length (bytes): 4
- Default value: 0xFFFFFFFF
- Read/write

### 13.3.6 Reader Name

- Identifies a reader with a 32-byte user-defined name.

- Parameter address: 0x0005
- Length (bytes): 32 (20 hex)
- Default value is "SkyeModule Nova" (in hex)
- Read/write

### 13.3.7 Host Interface Type

- Identifier for the type of host interface being used.
- Parameter address: 0x0006
- Length (bytes): 1
- Default value: 0x01 (TTL Serial)
- Valid host interface values are:
  - 0x01 – TTL Serial
  - 0x03 – SPI
  - 0x05 – I<sup>2</sup>C
  - 0x06 – USB
  - Any other values are invalid and are ignored.
- Read/write

### 13.3.8 Interface Baud Rate

- Sets the baud rate of the host interface.
- Works for the TTL Serial host interface only.
- Parameter address: 0x0007
- Length (bytes): 1
- Default value: 0x02 (38,400)
- Valid baud rate values are:
  - 0x01 – 19200
  - 0x02 – 38400
  - 0x03 – 57600
  - 0x04 – 115200
  - 0x05 – 1 MBaud
  - Any other value – 9600
- Read/write

### 13.3.9 User Port Direction

- Sets the direction of the GPIO pins of the reader.
- Parameter address: 0x0008
- Length (bytes): 1
- Default value: 0x00
- Default value is 0x00 (GPIO pins are outputs).
- A one in the bit position indicates that the corresponding GPIO pin is an input.

- A zero in the bit position indicates that the corresponding GPIO pin is an output.
- Bits correspond to the pins as follows:
  - BIT0 – GPIO 0
  - BIT1 – GPIO 1
  - BIT2 – GPIO 2
  - BIT3 – GPIO 3
  - BIT4 - BIT7 – Reserved
- Read/write

#### 13.3.10 User Port Value

- Sets or reads the value of the GPIO pins of the reader.
- Parameter address: 0x0009
- Length (bytes): 1
- Default value is 0x0F (GPIO pins are logic high).
- A one in the bit position indicates that the corresponding GPIO pin is logic high.
- A zero in the bit position indicates that the corresponding GPIO pin is logic low.
- Bits correspond to the pins as follows:
  - BIT0 – GPIO 0
  - BIT1 – GPIO 1
  - BIT2 – GPIO 2
  - BIT3 – GPIO 3
  - BIT4 - BIT7 – Reserved
- Read/write

#### 13.3.11 Operating Mode

- Can put the reader into sleep mode or into keyboard wedge mode.
- Parameter address: 0x000C
- Length (bytes): 1
- Default value is 0x00 (active).
- Writing a value 0x01 to this system parameter puts the reader in sleep mode.
- Sending a single byte on the interface that put the reader to sleep wakes the reader from sleep mode.
- **NOTE: SOFTWARE SLEEP MODE DOES NOT FUNCTION IN USB COMMUNICATIONS.** This is planned for future firmware releases.
- Write Only

#### 13.3.12 Tag Command Retries

- Sets the number of times a tag command will be retried internally.
- Parameter address: 0x0011
- Length (bytes): 1
- Default value is 0x03



- In very time dependent applications, it is recommended to set this parameter to 0 as this removes much of the variability of response time.
- In most situations, a retry number of 3 is sufficient.
- Read/write
- **WARNING:** Setting this parameter too high can cause very long response times when there is no tag or a failing tag in the field.

### 13.3.13 Power Level

- Configures the power level for the reader.
- Parameter address: 0x0012
- Length (bytes): 1
- Default value: 0xDC (27 dBm)
- RF output Power level may be set in steps of 0.1 dB from 10 dBm to 27 dBm.
- Power levels are written in hex corresponding to a decimal value between 50 and 220 (see Table 14-10).
- Use the following equation to calculate the value to be written for a desired power level:

$(\text{Desired power in dBm} - 5)/0.1 = \text{decimal value to write to system parameter}$

**Table 13-2: Common Power Values**

Power (dBm)	SkyeTek Decimal Value	Hex Equivalent
10	50	0x32
12	70	0x46
15	100	0x64
17	120	0x78
20	150	0x96
21	160	0xA0
24	190	0xBE
27	220	0xDC

- Read/write

---

**NOTE** – SkyeModule Nova's shipped with the SkyeTek Development Kit are preset to a power level of 27 dBm.

---

---

**NOTE** – *Setting the regulatory mode in section XXX below, will automatically set all RF parameters including the frequency start and stop, hop spacing, modulation depth etc. It is strongly recommended that (only) this parameter be set to maintain compliance with applicable rules for the regulatory region selected, under normal operation.*

---

#### 13.3.14 Current Frequency

- Sets the current frequency with which the reader singulates a tag.
- Parameter address: 0x0030
- Length (bytes): 4
- Default value: 0x3689CAC0 (915 MHz)
- This parameter is a 4-byte hex equivalent of the frequency. Table 14-11 shows hex values for commonly used frequencies.
- Read/write

#### 13.3.15 Start Frequency

- Sets the low end of the frequency range under which the reader operates.
- Parameter address: 0x0031
- Length (bytes): 4
- Default value: 0x35C80160 (902.3 MHz)
- This parameter is written with a 4-byte hex equivalent of the frequency desired. See Table 14-11 for commonly used frequencies and their hex values.
- To enable frequency hopping, set a frequency range using the Start Frequency and Stop Frequency system parameters. Then use the Frequency Hopping Sequence parameter to set the frequency hopping mode (either sequential or pseudo-random). To disable frequency hopping, set the Start Frequency and Stop Frequency parameter to the same value.
- Read/write

#### 13.3.16 Stop Frequency

- Sets the high end of the frequency range under which the reader operates.
- The parameter address: 0x0032
- Length (bytes): 4
- Default value: 0x374B9420 (927.7 MHz)
- This parameter is written with a 4-byte hex equivalent of the frequency desired. See table 14-11 for commonly used frequencies and their hex values.
- To enable frequency hopping, set a frequency range using the Start Frequency and Stop Frequency system parameters. Then use the Frequency Hopping Sequence parameter to set the frequency hopping mode (either sequential or pseudo-random). To disable frequency hopping, set the Start Frequency and Stop Frequency parameter to the same value.
- Read/write
-

Table 13-3: Commonly Used Frequencies

Frequency (MHz)	Hex Equivalent	Description
865.7	0x339988A0	EU Start
866.7	0x33A8CAE0	EU Center
867.9	0x33BB1A60	EU Stop
902.5	0x35C80160	NA Start
915.0	0x3689CAC0	NA Center
927.5	0x374B9420	NA Stop

### 13.3.17 Hop Channel Spacing

- Controls the hop channel spacing when frequency hopping is enabled.
- Parameter address: 0x0034
- Length (bytes): 4
- Default value: 0x00030D40 (200 KHz)
- To enable frequency hopping, set a frequency range using the Start Frequency and Stop Frequency system parameters. Then use the Frequency Hopping Sequence parameter to set the frequency hopping mode (either sequential or pseudo-random). To disable frequency hopping, set the Start Frequency and Stop Frequency parameter to the same value.
- Read/write

### 13.3.18 Frequency Hopping Sequence

- Switches the hopping sequence between pseudo-random and sequential mode.
- Parameter address: 0x0035
- Length (bytes): 1
- Default value: 0x01 (pseudo-random)
- To set the reader to sequential hopping mode, write 0x00 to this parameter.
- To reset the reader to pseudo-random hopping sequence, write 0x01 to this parameter.
- To enable frequency hopping, set a frequency range using the Start Frequency and Stop Frequency system parameters. Then use the Frequency Hopping Sequence parameter to set the frequency hopping mode (either sequential or pseudo-random). To disable frequency hopping, set the Start Frequency and Stop Frequency parameter to the same value.
- Read/write

### 13.3.19 Modulation Depth

- Sets the modulation depth of the reader-to-tag transmissions, as calculated by the equation:  $(V_{\max} - V_{\min})/V_{\max}$
- Parameter address: 0x0036

- Length (bytes): 1
- Default value: 100%
- The values for the modulation depths are in steps of 10, ranging from 10% to 100%.
- The values are the hex equivalent of the corresponding modulation depth.

**Table 13-4: Common Modulation Depth Values**

Modulation Depth (%)	Hex Equivalent
30	0x1E
80	0x50
90	0x5A
100	0x64

- The modulation depth is calculated by the reader using the equation:  
 $(V_{MAX} - V_{MIN})/V_{MAX}$  where  $V_{MAX}$  is the RF voltage when transmit power is maximum and  $V_{MIN}$  is the RF voltage when the transmit power is minimum. (For 100% modulation depth,  $V_{MIN}$  equals zero.)
- See the manufacturer's tag data sheet for the modulation depth supported for the tags in your application.
- Read/write

### 13.3.20 Regulatory Mode

- Enables pulse shaping, listen before talk, and timing modifications for regions with special regulatory requirements, such as Europe.
- Parameter address: 0x0037
- Length (bytes): 1
- Default value 0x00 (no pulse shaping)
- Read/write

**Table 13-5: Regulatory Mode Values**

Mode	Hex Value
No pulse shaping—Australia/New Zealand, Hong Kong, North America, Singapore, Taiwan	0x00
ETSI/Europe	0x01
Not used	0x02
Not used	0x03
Korea	0x04



## 14 Special Features

### 14.1 Sleep Modes

The Nova has two low power sleep modes: deep sleep (hardware controlled) and software sleep mode. The deep sleep mode has the lowest power consumption but a longer wake time. It can only be set using the N\_DEEP\_SLEEP pin 20 of the host interface connector. There is an internal pull-up on this pin, so if it is unused it can be left floating. To put the reader into deep sleep, set this pin low. Software sleep mode can be set using the Operating Mode system parameter. See the System Parameters section 13 for details. Current consumption and wake times for both modes can be found in the **Error! Reference source not found.** section **Error! Reference source not found.** and **Error! Reference source not found.** section **Error! Reference source not found.**, respectively.

**NOTE: SOFTWARE SLEEP MODE DOES NOT WORK IN USB COMMUNICATIONS.** This is planned for future firmware releases.

### 14.2 Feature Requests

Request a feature for the Nova module on the SkyeTek support page at [support.skyetek.com](http://support.skyetek.com)!