

Can't connect?
Need help?

**WE
CAN
HELP**

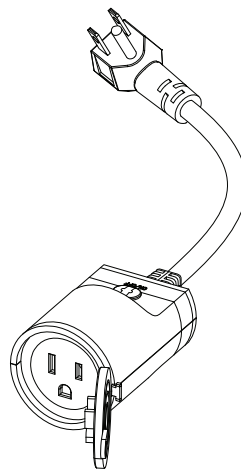
DO NOT
RETURN THIS
PRODUCT TO
THE STORE

•
support.mercurysmart.com
or tap 'support' for help in the
Mercury Smart app.

MERKURY
SMART

•

START
GUIDE



**SMART
OUTDOOR WI-FI
PLUG**

Thank you for purchasing your MERKURY smart home product.

Get started using your new devices by downloading **Merkury Smart App**, one convenient app that manages everything straight from your phone or tablet. Easily connect to your home Wi-Fi, and control multiple devices from the touch of your fingertips.

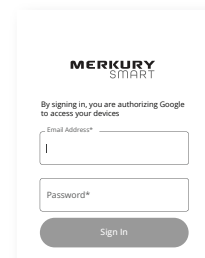
03

- Authorize your account with Smart Home Skills using the username and password from your Merkury app.

04

- Choose "Discover Devices." After a few seconds your Merkury devices will be displayed under Smart Home in the Alexa app.

Amazon Alexa

The image shows a mobile app login screen for 'MERKURY SMART'. At the top, it says 'By signing in, you are authorizing Google to access your devices'. Below this are two input fields: 'Email Address*' and 'Password*'. At the bottom is a 'Sign In' button.

Discover Devices

Smart Home devices must be discovered before they can be used with Alexa.

CANCEL

DISCOVER DEVIC

- You can rename your devices in the Merkury Smart app, and Alexa will refer to them by the same name.

So if you rename a smart strip to "Living Room" or a nickname like "Blossom," then Alexa will use that same name later on.

Alternatively, you can create an Alexa group, like "Bedroom" or "Downstairs," and add the device to the group.

Alexa will recognize the group name in the Alexa app, or the device name in the Merkury Smart app.



To control your Merkurs smart bulbs, plugs or surge protectors, just ask Alexa. Make sure your devices are already set up using the Merkurs app.

Things you can say*:

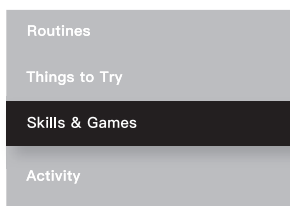
"Alexa, turn on the patio lights."
"Alexa, turn off the garden lights."



*Some commands require compatible devices.

01

- Open the Alexa app and go to Skills in the menu.



02

- Search for Merkurs Smart then tap Enable.



Search

Merkury
2 Results Sort: Relevance



Contents

■ Start Guide	
Download & Register	01
Plug In	02
Connect (Bluetooth Discovery)	02
Connect (Easy Mode)	02
Connect (AP Mode)	03
Questions, Troubleshooting, Notices	05
■ Voice Control Guide	
Google Assistant	08
Amazon Alexa	10

FCC Notice:

This equipment has been tested and found to comply with the limits for a Class B digital device, pursuant to part 15 of the FCC Rules. These limits are designed to provide reasonable protection against harmful interference in a residential installation.

This equipment generates, uses and can radiate radio frequency energy and, if not installed and used in accordance with the instructions, may cause harmful interference to radio communications. However, there is no guarantee that interference will not occur in a particular installation. If this equipment does cause harmful interference to radio or television reception, which can be determined by turning the equipment off and on, the user is encouraged to try to correct the interference by one or more of the following measures:

- Reorient or relocate the receiving antenna.
- Increase the separation between the equipment and receiver.
- Connect the equipment into an outlet on a circuit different from that to which the receiver is connected.
- Consult the dealer or an experienced radio/TV technician for help.

Caution: Any changes or modifications to this device not explicitly approved by manufacturer could void your authority to operate this equipment.

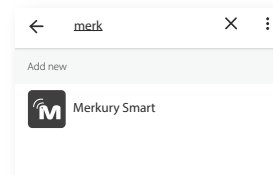
This device complies with part 15 of the FCC Rules. Operation is subject to the following two conditions: (1) This device may not cause harmful interference, and (2) this device must accept any interference received, including interference that may cause undesired operation.

This equipment complies with FCC radiation exposure limits set forth for an uncontrolled environment. This equipment should be installed and operated with minimum distance 20cm between the radiator and your body.

This transmitter must not be co-located or operating in conjunction with any other antenna or transmitter.

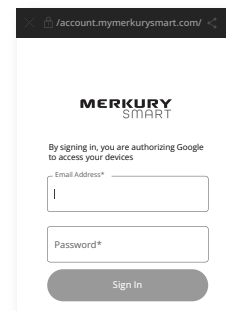
03

- Choose **"Merkury Smart"** from the list of Home Control partners.



04

- Authorize your account with Google Assistant using the username and password from your Merkury Smart app.



Now your Google Home app and Merkury devices are linked!

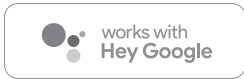
You're now able to say "Hey Google" and control your Merkury devices.

- At any time, go into the "Home Control" section of the Google Home app to set nicknames and rooms for your devices. **You can rename your devices in the Merkury Smart app, and Google Assistant will refer to them by the same name.**

So if you rename a smart bulb to "Living Room" or a nickname like "Blossom," then Google Assistant will use that same name later on. You can always give it a nickname using the Google Home app as well. **You can also assign bulbs to a specific room, like "Bedroom" or "Kitchen."**

Google Assistant will be able to control devices by room.

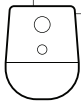
Google Assistant



To control your Mercury smart bulbs, plugs or surge protectors, just say "OK Google," or "Hey Google," and ask. Make sure your devices are already set up using the Mercury Smart app.

Things you can say*:

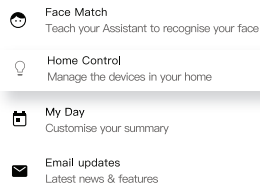
"Hey Google, turn on all the patio light."
"Hey Google, turn off the garden lights."



*Some commands require compatible devices.

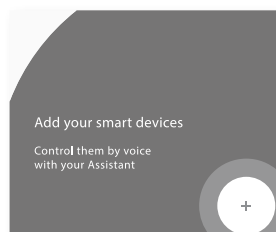
01

- Open the Google Home app and go to Home Control in the menu.



02

- Tap the "+" button.



Important Information:

Important Information: Before installing, read and follow all precautions, including the following: CAUTION: Suitable for indoor use only. **DO NOT IMMERSE IN WATER. DO NOT EXCEED RATED CAPACITY.**

Support:

If you encounter any issues, please contact us at support.mercurysmart.com for help.

© 2023 Mercury Innovations • 45 Broadway 3rd FL, New York NY 10006. The illustrated product and specifications may differ slightly from those supplied. iPhone, Apple and the Apple logo are trademarks of Apple Inc., registered in the U.S. and other countries. App Store is a service mark of Apple Inc. Google, Google Play, and related marks and logos are trademarks of Google LLC. iOS is a registered trademark of Cisco in the U.S. and other countries and is used under license. Amazon, Alexa and all related logos are trademarks of Amazon.com, Inc. or its affiliates. All other trademarks and trade names are those of their respective owners.

Made in China

START GUIDE

What's in the Box



- Smart Outdoor Wi-Fi Plug



- User Manual

Get Ready



- Know your Wi-Fi network and password



iOS 13



Android 10

- Make sure your mobile device is running iOS® 13 or higher or Android™ 10 or higher



2.4GHz

- Make sure you're connecting to a 2.4GHz Wi-Fi network (**This device can't connect to 5GHz networks**)

VOICE CONTROL GUIDE

Thank you for purchasing your MERKURY smart home product. Make sure your devices are already set up using the **Merkury Smart** app, then follow these steps.

Name and Control Each Device by Voice



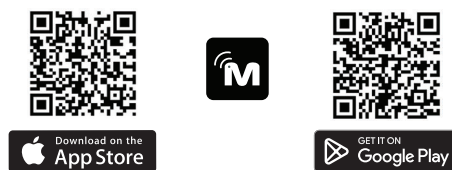
Contents

■ Voice Control Guide	
Google Assistant	10
Amazon Alexa	12

Download & Register

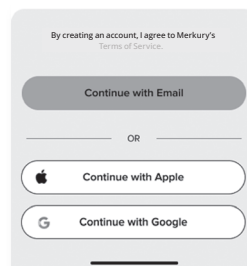
STEP 1

- Download the **Merkury Smart** App from App Store or Google Play.



- Register an account on your App.

01.
Enter your email address.
02.
Enter the verification code and create a password.
03.
Log in to the App.



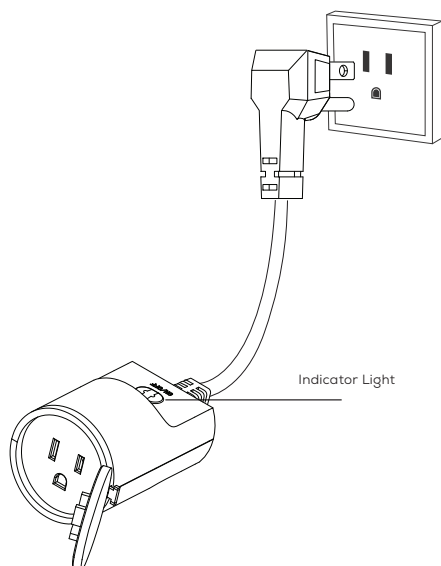
Prepare

STEP 2

■ Plug In

Plug the Merkury Smart device into the wall. Make sure the indicator light on the device is flashing rapidly blue, indicating the device is ready to connect.

*see reset instructions on p. 7



Questions. Troubleshooting. Notices

Troubleshooting

■ Cannot connect to your Wi-Fi network.

Make sure you entered the correct Wi-Fi password during the Wi-Fi setup. Check whether there are any Internet connection problems. If the Wi-Fi signal is too weak, try moving the device closer to your router or reset your Wi-Fi router and try again.

Reset the device

- Reset the plug by pressing and holding the button for 5 seconds until the indicator light is flashing.

System Requirements

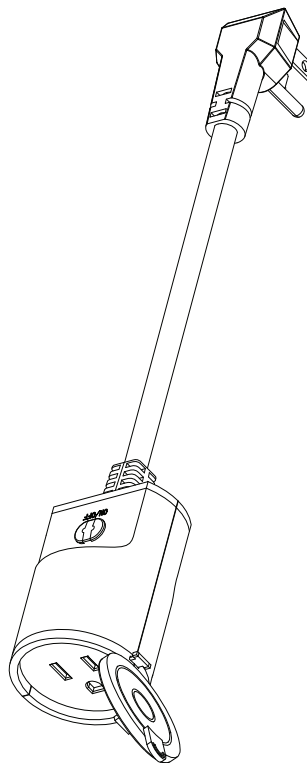
- Mobile Device running iOS® 13 or higher, or Android™ 10 or higher
- Merkury Smart App
- Existing Wi-Fi Network (Wi-Fi IEEE 802.11n)

Technical Specifications

- Input voltage 120V
- Input frequency 60Hz
- Max. load current 15A
- Max. Power 1800W
- Wi-Fi standard Wi-Fi IEEE 802.11n
- Wi-Fi frequency 2.4GHz
- Operating temperature range:
14-104°F (-10 – +40°)

Frequently Asked Questions

- **How do I customize my dashboard?**
Select the "Edit" option on the top of "Home" page. Create additional pages on your dashboard by dragging tiles to the right and organize devices to fit how you use them.
- **How Many Devices Can I Control?**
Merkury Smart app can control an unlimited amount of devices in an unlimited amount of locations. Your router may have a limit of how many devices can be connected to one router.
- **How do I rename my device?**
From your main device list, click on the device you want to rename, then click "Device Settings", then click on "Device Name". Rename your device to a more familiar name like "Bedroom" or "Living Room" and then click Save.
- **The device appears offline or unreachable, what should I do?**
Make sure your Wi-Fi router is online and in range. Make sure your device is plugged in and paired. You may also try restarting the device or if needed, re-pairing it.
- **What's the Wireless Range?**
The range of your home Wi-Fi is heavily dependent on your home router and the conditions of the room. Check with your router specifications for exact range data.
- **If my Wi-Fi/Internet goes down, will Merkury Smart still work?**
Merkury products need to be connected to Wi-Fi in order to control them remotely.

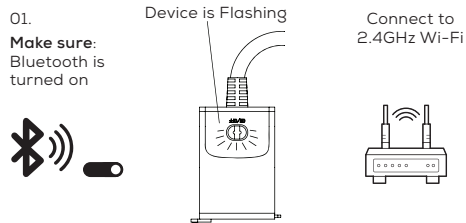


Connect (Auto Discovery)

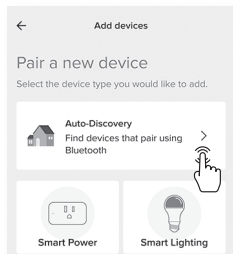
STEP 3

■ Set Up: Auto Discover Device

Your device is now able to be discovered magically to connect to your home Wi-Fi network. It's quicker and easier than ever to connect.

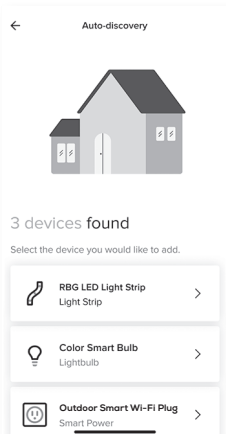


■ Add device:



02. While the device is flashing, tap "Auto-Discovery" on the Add Device screen of the Mercury Smart app.

03. The Mercury Smart app will automatically detect your Smart Plug using its wireless Bluetooth connection.

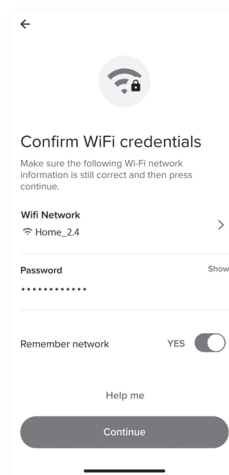


04. The Mercury Smart app will automatically detect the network that your smartphone is connected to. Enter the password to your Wi-Fi network, then tap "Next Step" and the device will connect.

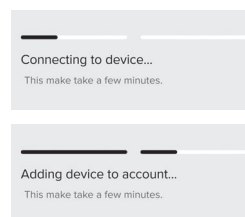
05. The Mercury Smart app will try to connect your device.

NOTE: This device can't connect to 5GHz networks.
If you are unable to pair initially, reset your device and try pairing using the alternative method provided in the app.

Connect (Auto Discovery)



■ Pairing Device



06. The Mercury Smart app will attempt to connect. This may take a few moments.

