

ASSISTANT FCC

EN

This is a tabletop, installer code management tool. It is supplied with software for PCs and a USB communications cable.



TECHNICAL DATA

Frequency	868,35MHz
Power supply	USB
Power consumption	< 100mA
Radiated power	<25mW
Working temperature	-20°C - +85°C
Watertightness	IP20
Dimensions	150x120x45mm

FUNCTIONS:

- Installations management
- Configure products of the MOTION gamma

MINIMUM REQUIREMENTS

Supported OS:

- Windows XP-SP3,
- Windows Vista 32-SP1 / 64-SP1,
- Windows 7 32/64,
- Windows Server 2003 R2, 2008 y 2008 R2
- Windows Server 2012
- Windows 8, Windows 8.1

Hardware:

- Pentium 4
- 512 Mbytes of RAM
- 350 Mbytes of free hard drive
- Free USB port
- ASSISTANT

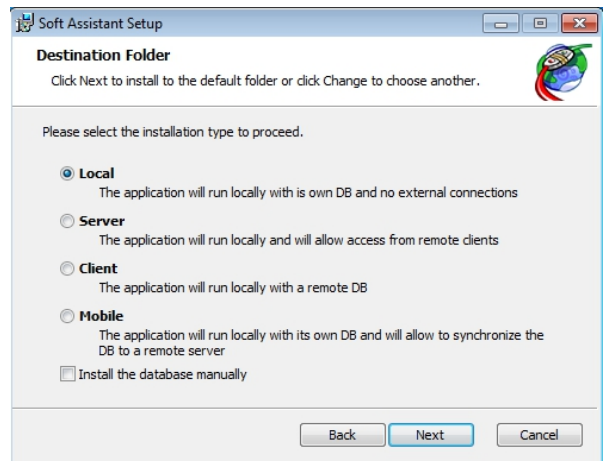
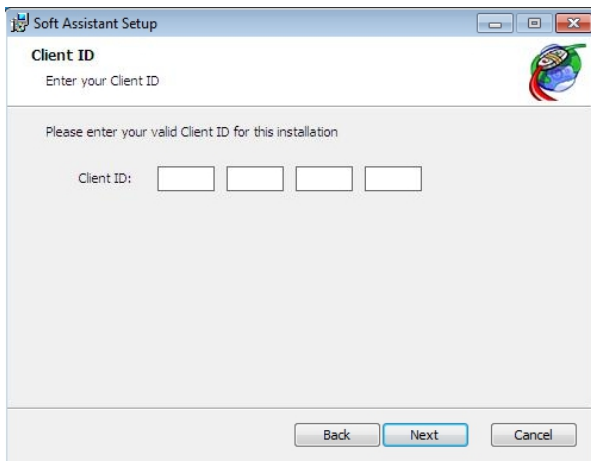
INSTALLATION

3.1 SOFTWARE INSTALLATION

Before installing the new software, you should make a security copy of your database.

Insert the USB memory stick inside a USB port. The Soft-ASSISTANT setup application will then start automatically.

1. Enter the register code which is on the bottom part of the ASSISTANT.
2. Select the type of installation.



The installation will be done automatically.

If you want to install another installation type, Server, Client or Mobile, open the help file in the USB stick "Help" and follow the instructions of clause 3.1.

ASSISTANT FCC

3.2 DRIVERS INSTALLATION

Insert the USB memory stick in a USB port of the PC. Connect the USB cable to the programmer and the PC. A window will open on the PC containing the message “New hardware found” and the Windows assistant for new hardware found will auto-run. Follow the instructions given on screen. During hardware installation, the assistant will ask you to select the USB driver path. Select the USB unit.

3.3 RUNNING

On running the application, the programme will request a login and password. The login is “softadmin” and the password is “assistant” by default.

User:	softadmin
Password:	assistant

USE OF THE PROGRAMMER

For information, please read the help in the Soft-ASSISTANT programme.

The manufacturer reserves the right to modify equipment specifications without prior notice.

FCC / ISED COMPLIANCE

Model: ASSISTANT FCC

FCC ID: U5Z-ASSISTANT

IC: 8572A-ASSISTANT

JCM Technologies has not approved any changes or modifications to this device by the user. Any changes or modifications could void the user’s authority to operate the equipment.

JCM Technologies S.A. n’approuve aucune modification apportée à l’appareil par l’utilisateur, quelle qu’en soit la nature. Tout changement ou modification peuvent annuler le droit d’utilisation de l’appareil par l’utilisateur.

This device complies with Part 15 of the FCC Rules and Industry Canada’s licence-exempt RSS standards. Operation is subject to the following two conditions: (1) this device may not cause interference, and (2) this device must accept any interference, including interference that may cause undesired operation of the device.

Le présent appareil est conforme aux CNR d’Industrie Canada applicables aux appareils radio exempts de licence. L’exploitation est autorisée aux deux conditions suivantes : (1) l’appareil ne doit pas produire de brouillage, et (2) l’utilisateur de l’appareil doit accepter tout brouillage radioélectrique subi, même si le brouillage est susceptible d’en compromettre le fonctionnement.

FCC Class B digital device notice

This equipment has been tested and found to comply with the limits for a Class B digital device, pursuant to part 15 of the FCC Rules. These limits are designed to provide reasonable protection against harmful interference in a residential installation. This equipment generates uses and can radiate radio frequency energy and, if not installed and used in accordance with the instructions, may cause harmful interference to radio communications. However, there is no guarantee that interference will not occur in a particular installation. If this equipment does cause harmful interference to radio or television reception, which can be determined by turning the equipment off and on, the user is encouraged to try to correct the interference by one or more of the following measures:

- Reorient or relocate the receiving antenna.
- Increase the separation between the equipment and receiver.
- Connect the equipment into an outlet on a circuit different from that to which the receiver is connected.
- Consult the dealer or an experienced radio/TV technician for help.

ASSISTANT FCC

FR

Il s'agit d'un outil de bureau qui permet de gérer les installations. Il est livré avec un logiciel pour PC ainsi qu'un câble de communication USB.



DONNÉES TECHNIQUES

Fréquence	868,35MHz
Alimentation	USB
Consommation	< 100mA
Puissance	<25mW
Température fonctionnement	-20°C - +85°C
Étanchéité	IP20
Dimensions	150x120x45mm

FONCTIONS :

- Gérer les installations
- Configurer les produits du gamma MOTION

MATÉRIEL MINIMUM

Systèmes opératifs supportées:

- Windows XP-SP3,
- Windows Vista 32-SP1 / 64-SP1,
- Windows 7 32/64,
- Windows Server 2003 R2, 2008 y 2008 R2
- Windows Server 2012
- Windows 8, Windows 8.1

Hardware:

- Pentium 4
- 512 Mbytes de mémoire RAM
- 350 Mbytes d'espace libre sur disque dur
- Port USB libre
- ASSISTANT

INSTALLATION

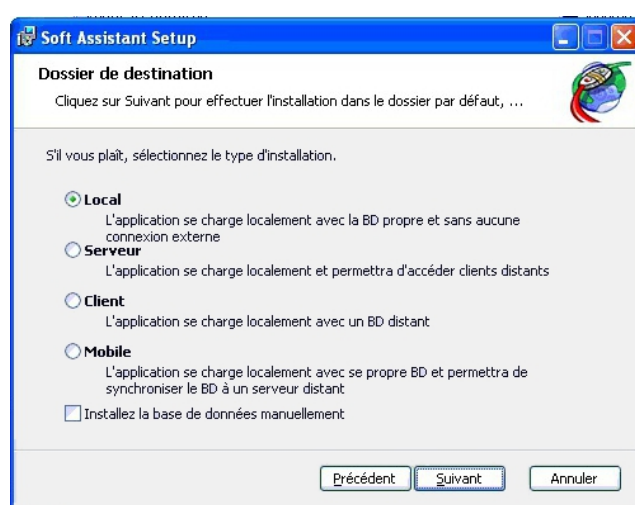
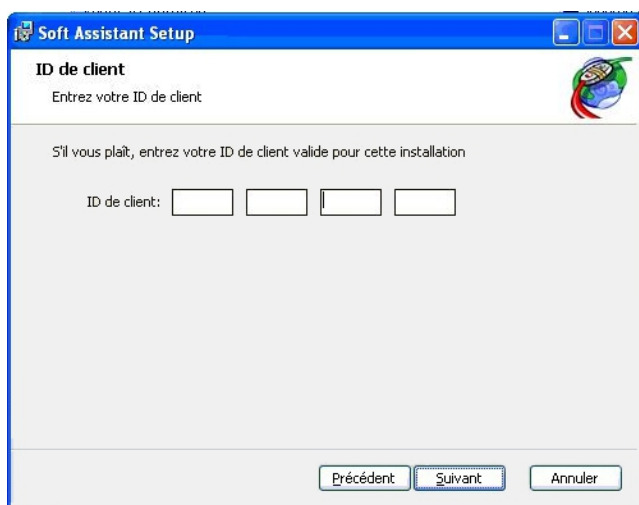
3.1 INSTALLATION DU SOFTWARE

Avant d'installer le nouveau software, il faudra réaliser une copie de sécurité de sa base de données.

Insérez le clé USB dans le lecteur du PC correspondant et l'application « setup » (installation) de Soft-ASSISTANT s'exécutera automatiquement

2. Entrer le code du registre qui se trouve à l'arrière de ASSISTANT.

2. Sélectionner le type d'installation.



L'installation se fera automatiquement.

Si vous voulez réaliser un autre type d'installation, Serveur, Client ou Portable, vous devrez ouvrir le fichier du aide qui se trouve dans le clé USB "Help" et suivez les instructions du 3.1.

ASSISTANT FCC

3.2 INSTALLATION DE LES DRIVERS

Insérez le clé USB dans le lecteur du PC correspondant. Reliez le câble USB au programmeur au PC. Une fenêtre s'ouvrira avec un message indiquant la localisation d'un nouveau matériel. L'assistant de Windows correspondant s'exécutera alors. Suivez les instructions qui s'afficheront à l'écran. Durant l'installation du matériel, l'assistant vous demandera de sélectionner la route du pilote USB : vous devez sélectionner le lecteur de USB.

3.3 EXÉCUTION

À l'exécution de l'application, le programme demandera un nom d'utilisateur et un mot de passe. Le nom d'utilisateur par défaut est « softadmin » et le mot de passe « assistant ».

Utilisateur:	softadmin
Mot de passe:	assistant

EMPLOI DU PROGRAMMATEUR

Pour information, consultez l'aide du programme Soft-ASSISTANT.

Le fabricant se réserve le droit de modifier les caractéristiques du matériel sans préavis.

CONFORMITÉ ISED / FCC

Modèle: ASSISTANT FCC

FCC ID: U5Z-ASSISTANT

IC: 8572A-ASSISTANT

JCM Technologies has not approved any changes or modifications to this device by the user. Any changes or modifications could void the user's authority to operate the equipment.

JCM Technologies S.A. n'approuve aucune modification apportée à l'appareil par l'utilisateur, quelle qu'en soit la nature. Tout changement ou modification peuvent annuler le droit d'utilisation de l'appareil par l'utilisateur.

This device complies with Part 15 of the FCC Rules and Industry Canada's licence-exempt RSS standards. Operation is subject to the following two conditions: (1) this device may not cause interference, and (2) this device must accept any interference, including interference that may cause undesired operation of the device.

Le présent appareil est conforme aux CNR d'Industrie Canada applicables aux appareils radio exempts de licence. L'exploitation est autorisée aux deux conditions suivantes : (1) l'appareil ne doit pas produire de brouillage, et (2) l'utilisateur de l'appareil doit accepter tout brouillage radioélectrique subi, même si le brouillage est susceptible d'en compromettre le fonctionnement.

FCC Class B digital device notice

This equipment has been tested and found to comply with the limits for a Class B digital device, pursuant to part 15 of the FCC Rules. These limits are designed to provide reasonable protection against harmful interference in a residential installation. This equipment generates uses and can radiate radio frequency energy and, if not installed and used in accordance with the instructions, may cause harmful interference to radio communications. However, there is no guarantee that interference will not occur in a particular installation. If this equipment does cause harmful interference to radio or television reception, which can be determined by turning the equipment off and on, the user is encouraged to try to correct the interference by one or more of the following measures:

- Reorient or relocate the receiving antenna.
- Increase the separation between the equipment and receiver.
- Connect the equipment into an outlet on a circuit different from that to which the receiver is connected.
- Consult the dealer or an experienced radio/TV technician for help.

