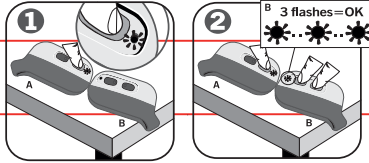


SIDE-PROG PROGRAMMING



ENCOLA



A=transmitter registered in an installation
B=new transmitter

COD. 1246056 / 1.0

TECHNICAL DATA
Freq. 868,35MHz
3Vdc CR2032 / 12m A
Radiated power <1mW
Temp. -20°C - +55°C

FCC Information:

Changes or modifications not expressly approved by JCM Technologies S.A. could void the user's authority to operate this equipment.
NOTE: This equipment has been tested and found to comply with the limits for a Class B digital device, pursuant to Part 15 of the FCC rules. Operation is subject to the following: (1) This device may not cause harmful interference, and (2) this device must accept any interference received, including interference that may cause undesired operation.