

Energizer®

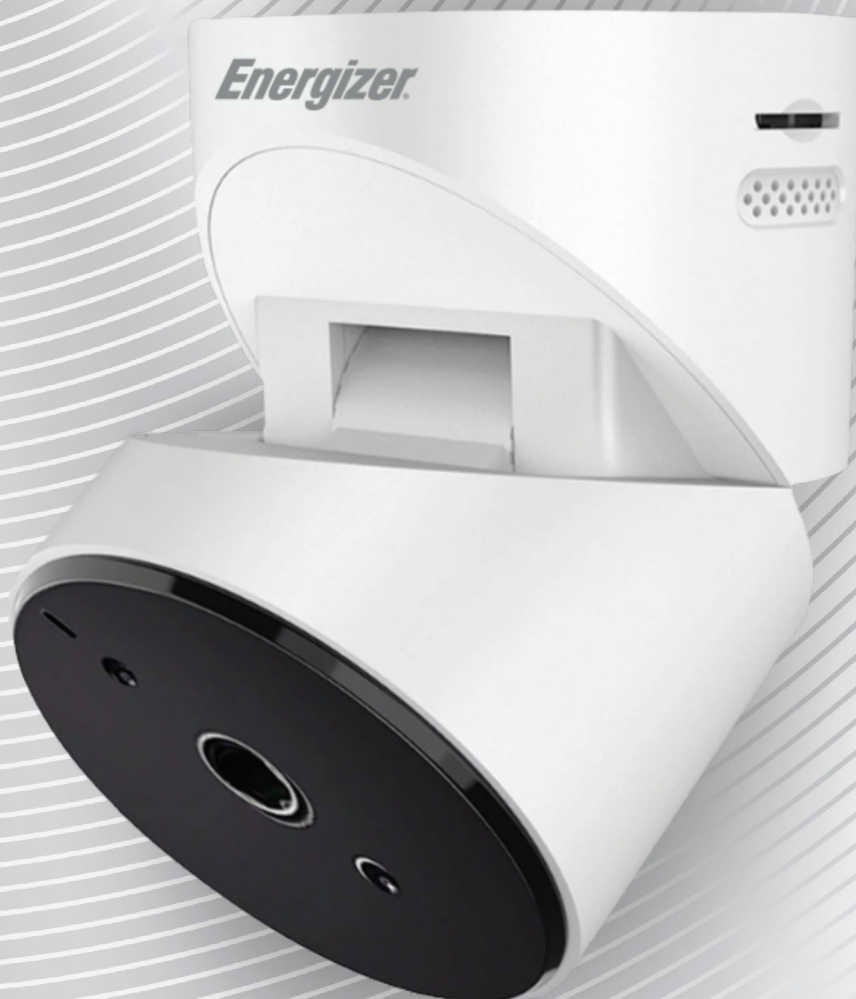
**SMART 5GHz WIFI
GARAGE DOOR OPENER
WITH CAMERA**



Scan the QR code to
upgrade your warranty



From 1 Year to 2 Year
Limited Warranty
Item#EGD1-1001-WHT



QUICK START GUIDE

EGD1-1001-WHT 0824 v1.1

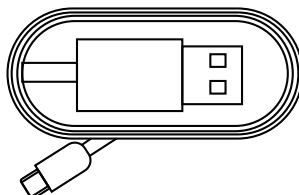
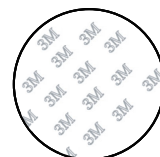
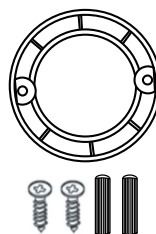
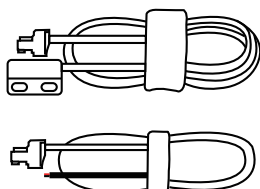
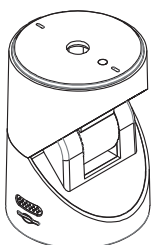
Getting Started

Thank you for choosing the **Energizer®** Smart 5GHz WiFi Garage Door Opener With Camera. This quick start guide will help you with setup and installation.

Package Includes:

Smart Garage Camera
5M Door Sensor Cable
Motor Control Cable
Base + Accessories
Installation Kit
Adhesive Metal Disk
USB-C Power Cable
Quick Start Guide

ESTIMATED SETUP



What You Need:



App



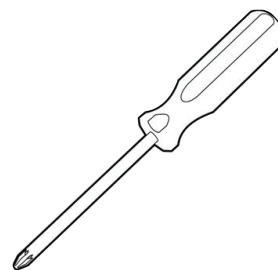
2.4GHz



5GHz

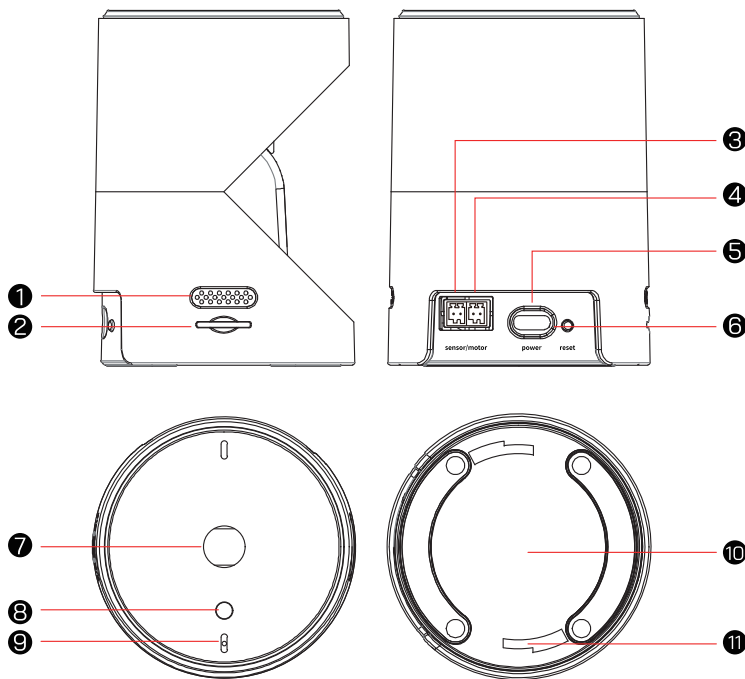


2.4GHz or 5GHz WiFi



Screwdriver
(For Installation)

Product Description



- ❶ Speaker
- ❷ MicroSD Card slot
(Card not included)
- ❸ Door Sensor Interface
- ❹ Motor Control Interface
- ❺ Type-C Power Port
- ❻ Reset Button
- ❼ Camera Lens
- ❽ IR sensor
- ❾ Status Light
- ❿ Magnetic base
- ⓫ Mounting hole



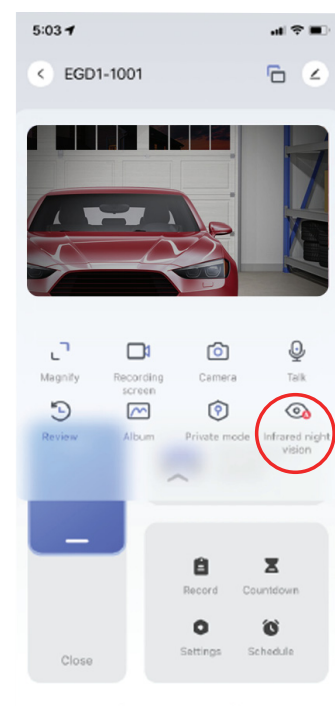
Color Night Vision

True Color Night Vision is an innovative technology that allows cameras to see in true color at night with minimal light.

Most cameras use infrared LEDs for night vision, however the picture will be in black and white. Your Smart Garage Door Opener Camera comes with True Color Night Vision AND Infrared Night Vision!

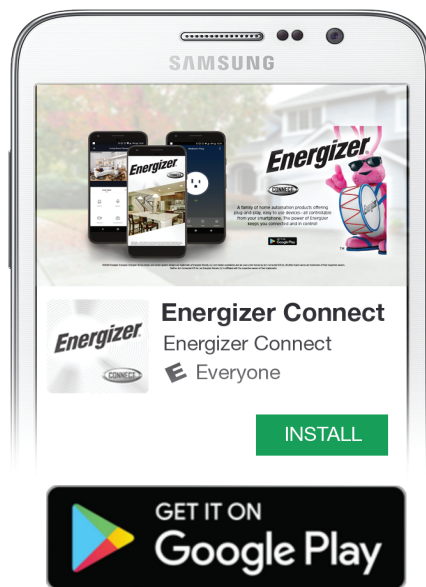
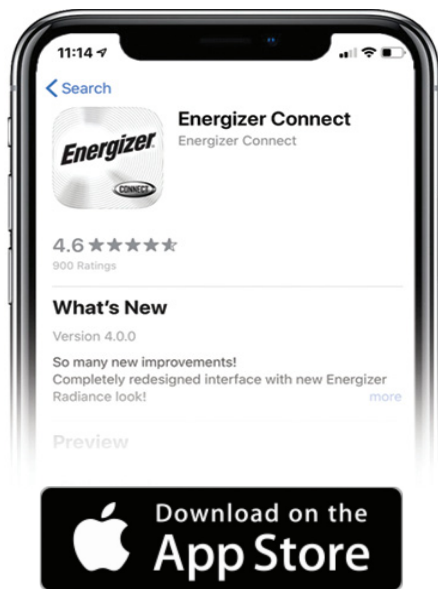
By default, Infrared Night Vision is enabled.

To enable Color Night Vision, go to the Infrared Night Vision settings and change it to Off/Closed. This will turn off the Infrared LEDs, even in the dark, allowing the Color Night Vision to activate.



STEP 1

Download the free **Energizer®** Connect app from the App Store (for iPhones) or Google Play Store (for Android phones).



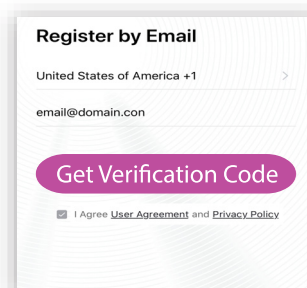
STEP 2

Make sure your mobile device is connected to your **WiFi** network.

Open the app and **click** “Create Account” by following the on-screen instructions.



After your initial sign in, your app will remember your password and log you in automatically. You can also choose to manually log out under Settings in the Main menu.

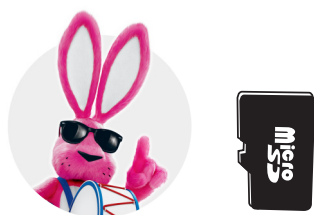
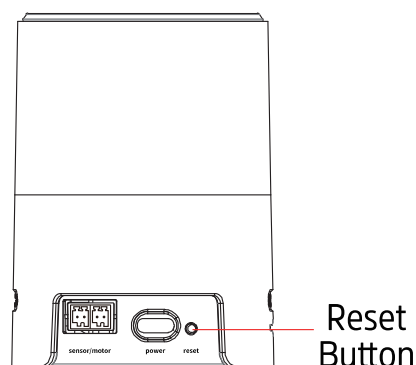


You may need to check your Spam folder for the verification code

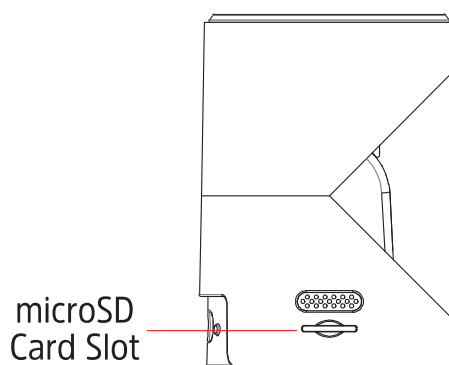
STEP 3

Plug the camera into a wall outlet using the provided cable and USB power adapter (not included). The camera will make a chime sound, letting you know it's on. Then you will hear a beeping sound when it is in pairing mode. (it will beep every 15 seconds letting you know it's in pairing mode).

NOTE: If the camera is not beeping, then you are not in **pairing mode**. Reset the camera by holding down the reset button for 5 seconds until you hear the camera make a chime sound.

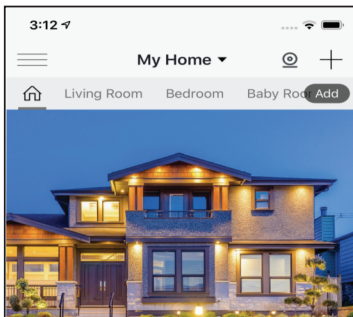


Tip: If you would like to install a microSD card, insert it as shown with the gold pins facing down. (micro SD card not included)

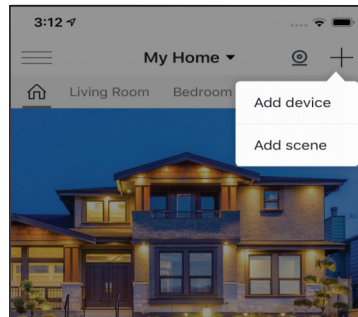


STEP 4

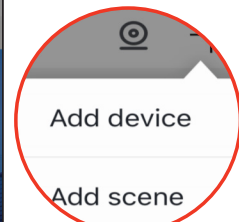
Make sure your WiFi is enabled. After logging in, **click “+”** on the top right of the screen and **select** "Add device".



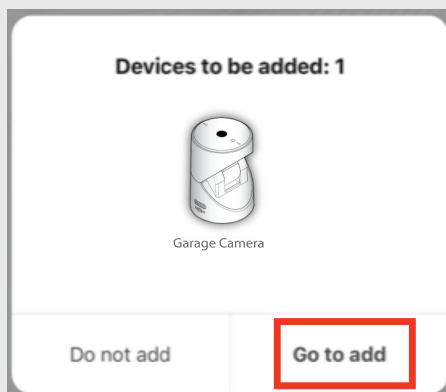
Click



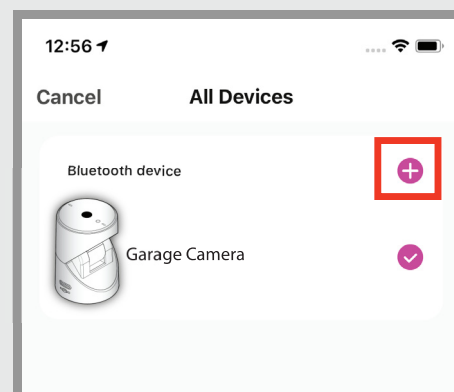
Select



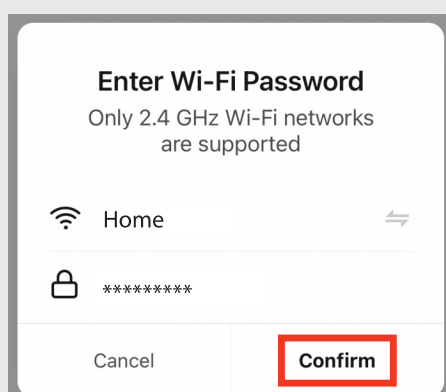
The app will detect the WIFI enabled device and ask if you want to **add it**



Make sure the check is marked next to the device you want to add, **click** the + button



Make sure your 2.4GHz or 5GHz network is selected, input the password and **press** confirm



NOTE: Once successful then go directly to Step 7.
If the app does not detect your device, skip this part and proceed to Step 5.

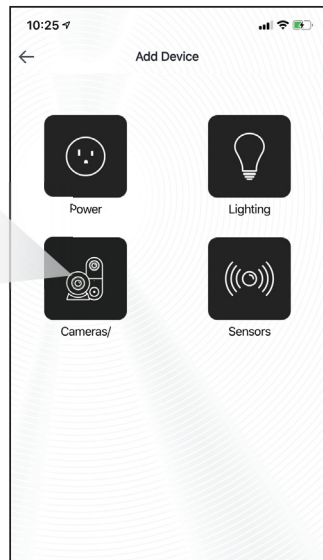
STEP 5

Select the Camera category and **confirm** the indicator light is still blinking white. **Click** “Next Step”.

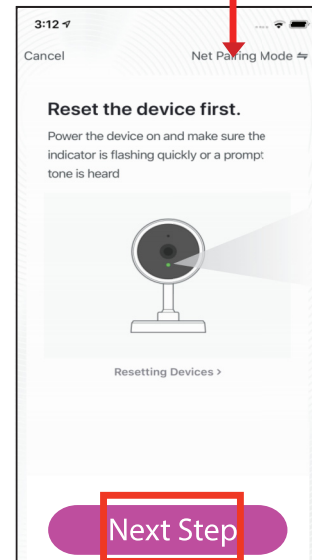
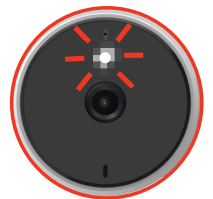


Help: Switch between pairing modes. See troubleshooting page 33.

Select



Confirm

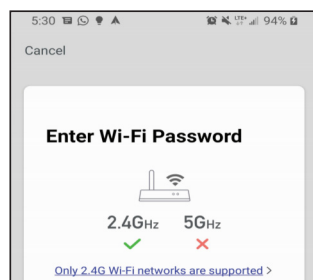


Click

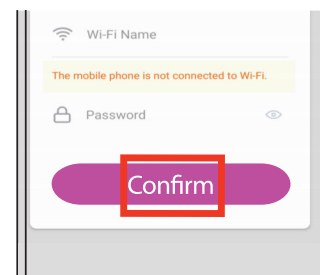
STEP 6

Confirm that the displayed **WiFi** network is your **2.4GHz WiFi** or **5GHz** network, **enter** your WiFi password and **click** “Confirm”.

Confirm WiFi

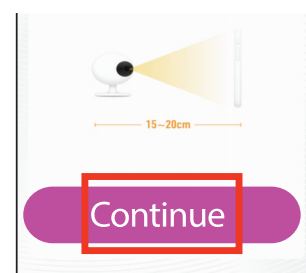


Enter and Click



STEP 7

On the next screen, a QR Code will appear. Position your camera to scan this QR code on your phone. **Click** “Continue” when you are ready.



Click

Connect The Device

Touch the lens of the camera directly against the QR code on your phone and slowly move the camera away.



Click

Once you hear an audible prompt from the camera, **click** the "I Heard a Prompt" button.



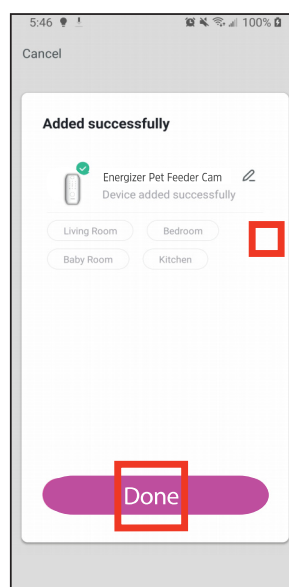
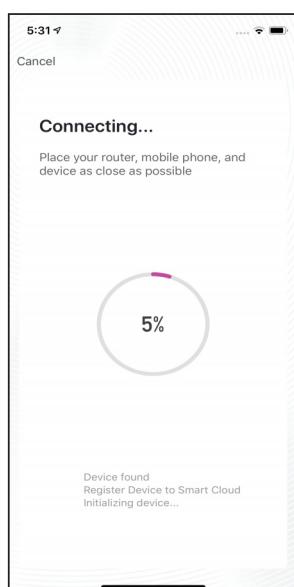
Tip: If you don't hear the prompt, try pairing using EZ mode. Take a look at troubleshooting on page 16.

STEP 8

Your Smart Camera will now be connected to the network. Confirm the settings for your device and then **Click** "Done".

TIP: You can put your camera directly in a room by selecting one of the available rooms. **Click** the button to change the name of the product.

PROCESSING TIME



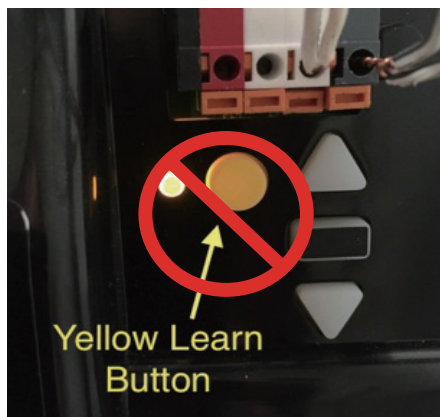
Click

Your **Energizer**® Smart 5GHz Garage Door Opener With Camera is now ready to use. You can now view the camera remotely and receive mobile alerts. We hope you enjoy using your **Energizer**® Smart 5GHz WiFi Pet Treat Dispenser With Camera. For frequently asked questions and instruction videos, please visit our website at www.energizerconnect.com.

COMPATIBILITY CHECK

Verify the Smart Garage Camera works with your garage door

1. Look for your garage door on the included “Garage Door Compatibility Guide”.
- Garage door openers with **yellow / purple** learn buttons will likely **NOT** work. But in the event that you do have a yellow / purple learn button you may try to see if it works.
2. Manually ensure your garage door opener is compatible with the Smart Garage Camera.
 - Follow the wires from the wall mounted garage controller to your garage door opener.
 - Where the wall mounted garage door controller wires connect to the opener, use a needle nose plier or paperclip to touch the two garage door terminals together.



If the garage door opens or closes, the Smart Garage Camera is compatible with your garage door opener; these will be the terminals the Smart Garage Camera will plug into.

Preparation before installation

1. Check your Wi-Fi

Check the Wi-Fi signal in the garage, where the smart Garage camera will be mounted under the garage door opener or on wall.



2. Power up your device

Find a convenient location and power the smart Garage camera by plugging it into a USB power adapter (not included).

Installation Overview

