



BLUETOOTH® CD PLAYER  
WITH DIGITAL FM RADIO

Model: BWA17AA003

---

**PRODUCT GUIDE**

## Features and Controls

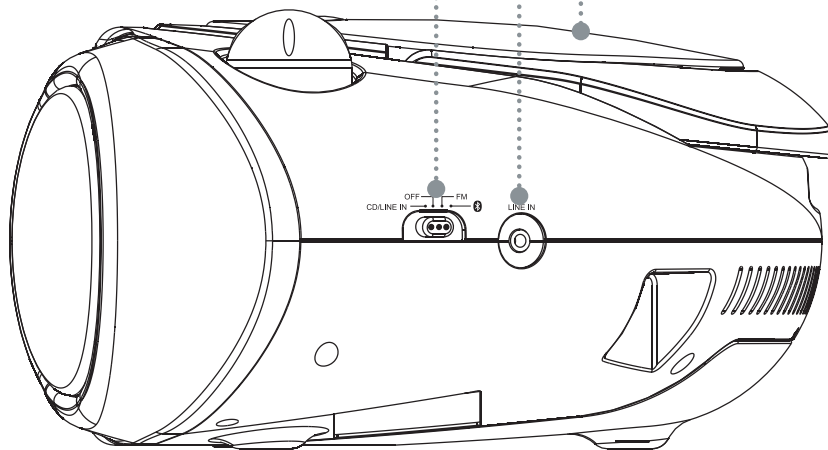
### Features

- Bluetooth Wireless
- Wireless range: 60 ft.
- CD player: CD, CD-R/RW
- Programmable tracks
- AM/FM radio (DLL)
- Top-load disc player
- Analog volume control
- Built-in stereo speakers
- Negative LCD display with white backlight
- 3.5mm audio input
- AC power: built-in AC power cable
- DC battery power: requires 6 C batteries (not included)
- Battery life: ~8 hours of audio

**CD/Line In/OFF/FM/Bluetooth**  
Switch between CD/Line In, OFF, FM radio and Bluetooth.

**3.5mm Audio Line Input**

**CD Door (top)**



**Repeat**  
Press to repeat the current track. Press twice to repeat the entire album.

**LCD Display**

**Skip/Search**  
Press to skip between tracks on a loaded CD. Press and hold to search through the current track.

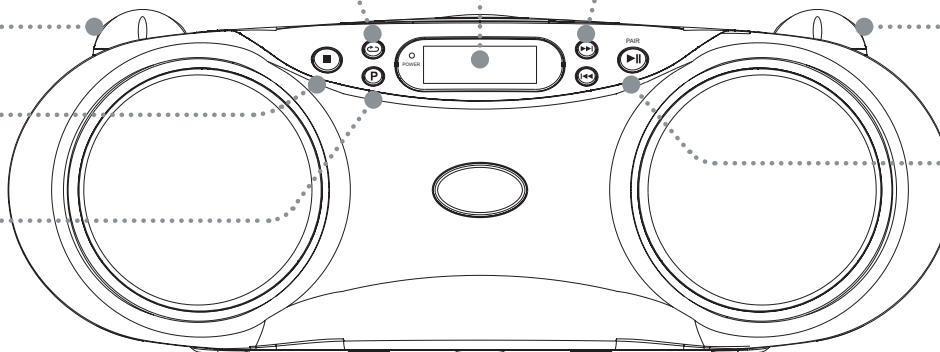
**Volume**  
Turn to adjust the volume.

**Tuning**  
In radio mode, turn to adjust the AM or FM radio station.

**Stop**  
Press to stop a CD during play.

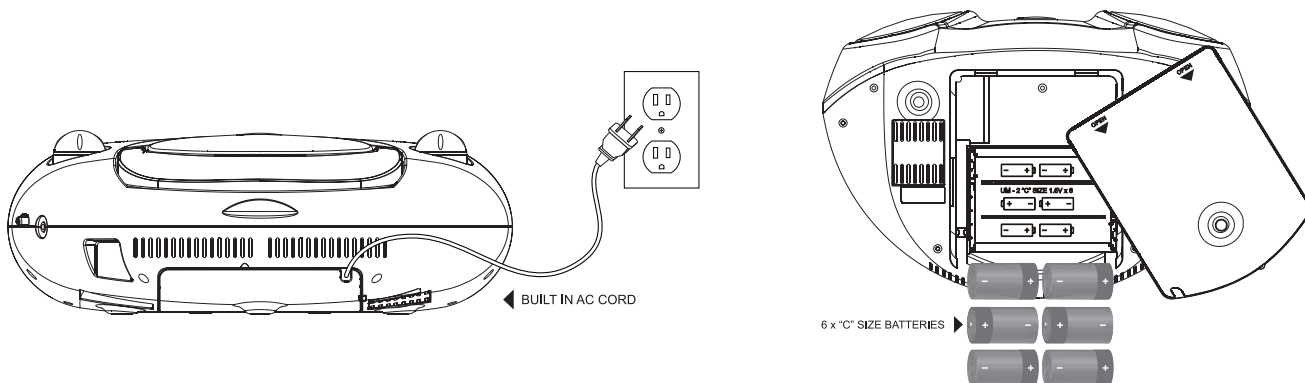
**Pair/Play/Pause**  
Press & Hold to begin pairing a Bluetooth device. Press to play or pause the current track.

**Program**  
Press to program the loaded CD to play tracks in a specified order.



## Power & Battery

Plug the power cord into a standard AC power outlet to power the unit. This unit requires 6 C-size, batteries (not included) for battery power.



---

## Bluetooth Wireless

---

### Pairing a Bluetooth Device for the First Time

1. Press the **Source** button to switch to **Bluetooth** Mode. The letters "bt" will flash on the display.
2. When pairing, remain within 3 feet of the unit.
3. If the unit does not automatically begin to pair, press and hold the **Pair** button.
4. Using the native controls on your Bluetooth device, select the **BWA17AA003** in your Bluetooth settings to pair.
5. If your device requests a password, enter the default password **0000**.
6. Refer to the user's manual for your specific device for instructions on pairing and connecting Bluetooth devices. When successfully paired, the display will stop flashing.
7. After initial pairing, the unit will stay paired unless unpaired manually by the user or erased due to a reset of the device.
8. If your device should become unpaired, follow the above steps again.
9. If any pairing issues should occur, unpair the unit on your Bluetooth device and follow the above steps again.

### Playing Audio Wirelessly

1. To select, play, pause or skip a track, use the native controls on the connected Bluetooth Device, or press the **Pair/Play/Pause** or **Tun/Skip/Search** buttons.
2. Audio played through the connected Bluetooth device will now be heard through the speakers.

---

## Radio

---

### Radio Reception

An AM and FM antenna is built into the radio. To improve radio reception, adjust the position of the boombox.

### Playing the Radio

1. Slide the **Source Switch** switch to AM or FM radio mode.
2. Adjust the **Tuning** dial to tune the radio.

---

## CD

---

### Loading and Playing a CD

Note: This unit is not compatible with MP3 CDs.

1. Open the CD door and place a CD in the boombox, label side facing up.
2. Close the CD door.
3. Adjust the **Source Switch** to CD mode.
4. Press the **Play/Pause** button to begin playing the loaded disc.

### Programming a CD

1. Press the **Stop** button to stop a loaded CD.
2. Press the **Program** button.  
*"01" will blink on the display.*
3. Press the **Skip/Search** buttons to select a track.
4. Press the **Program** button to add the selected track to the program.
5. Repeat steps 4 and 5 to program up to 20 tracks to play in a specified order.
6. Press the **Stop** button to cancel a program.

---

## 3.5 mm Audio input

---

### Using the Line In

3.5 mm audio input cable not included.

1. Plug one end of a 3.5 mm audio input cable into the **Line In** input on the back of the unit, and plug the other end of the cable into the audio output/headphone jack on an MP3 Player or other audio source.
2. Turn ON the speaker using the **Power button**.
3. Turn ON the connected audio device using it's Power button.
4. Slide the **Source Switch** to **Line In**.
5. Select and begin playing audio on the connected audio device. Audio played through the connected device should now be heard through the speakers.

## Important Safety Instructions

- Read these Instructions.
- Keep these Instructions.
- Heed all Warnings.
- Follow all instructions.
- Do not use this apparatus near water.
- Clean only with a dry cloth.
- Do not block any ventilation openings. Install in accordance with the manufacturer's instructions.
- Do not install near any heat sources such as radiators, heat registers, stoves, or other apparatus (including amplifiers) that produce heat.
- Do not defeat the safety purpose of the polarized or grounding - type plug. A polarized plug has two blades with one wider than the other. A grounding type plug has two blades and a third grounding prong. The wide blade or the third prong are provided for your safety. When the provided plug does not fit into your outlet, consult an electrician for replacement of the obsolete outlet.
- Protect the power cord from being walked on or pinched particularly at plugs, convenience receptacles, and the point where they exit from the apparatus.
- Only use attachments/accessories specified by the manufacturer.
- Unplug this apparatus during lightning storms or when unused for long periods of time.
- Refer all servicing to qualified service personnel. Servicing is required when the apparatus has been damaged in any way, such as power-supply cord or plug is damaged, liquid has been spilled or objects have fallen into the apparatus, the apparatus has been exposed to rain or moisture, does not operate normally, or has been dropped.
- Minimum distances 5cm around the apparatus for sufficient ventilation; The ventilation should not be impeded by covering the ventilation openings with items, such as newspapers, table-cloths, curtains, etc.; No naked flame sources, such as lighted candles, should be placed on the apparatus; The use of apparatus in moderate climates.



## Additional Warnings and Precautions

- **CAUTION:** TO PREVENT ELECTRIC SHOCK, MATCH WIDE BLADE OF PLUG TO WIDE SLOT, FULLY INSERT.
- Mains plug is used as disconnect device and it should remain readily operable during intended use. In order to disconnect the apparatus from the mains completely, the mains plug should be disconnected from the mains socket outlet completely.
- **WARNING:** Shock hazard - Do Not Open.
- **WARNING:** To reduce the risk of fire or electric shock, do not expose this apparatus to rain, moisture, dripping, or splashing.
- Objects filled with liquids, such as vases, shall not be placed on the apparatus.
- **CAUTION:** Use of controls or adjustments or performance of procedures other than those specified may result in hazardous radiation exposure.
- **WARNING:** Changes or modifications to this unit not expressly approved by the party responsible for compliance could void the user's authority to operate the equipment.
- **WARNING:** Do not place this unit directly onto furniture surfaces with any type of soft, porous, or sensitive finish. As with any rubber compound made with oils, the feet could cause marks or staining where the feet reside. We recommend using a protective barrier such as a cloth or a piece of glass between the unit and the surface to reduce the risk of damage and/or staining.
- **CAUTION:** Danger of explosion if battery is incorrectly replaced. Replace only with the same or equivalent type.
- **WARNING:** There is a danger of explosion if you attempt to charge standard Alkaline batteries in the unit. Only use rechargeable NiMH batteries.
- Battery shall not be exposed to excessive heat such as sunshine, fire or the like.
- Caution marking is located at the rear or bottom of the apparatus.
- The marking information is located at the rear or bottom of the apparatus.
- Keep new and used batteries away from children. If the battery compartment does not close securely, stop using the product and keep it away from children.
- If you think batteries might have been swallowed or placed inside any part of the body, seek immediate medical attention.
- Do not mix old and new batteries.
- Completely replace all old batteries with new ones.
- Do not mix alkaline, standard (carbon-zinc), or rechargeable (ni-cad, ni-mh, etc) batteries.
- Batteries should be recycled or disposed of per state and local guidelines.
- **WARNING:** This product may contain chemicals known to the State of California to cause birth defects, or other reproductive harm (California Prop 65). Wash hands after handling.
- This product meets and complies with all Federal regulations.

## WARNING: DO NOT INGEST BATTERY, CHEMICAL BURN HAZARD.



Warning: To reduce the risk of electric shock, do not remove cover (or back). No user-serviceable parts inside. Refer servicing to qualified service personnel.



The exclamation point within an equilateral triangle is intended to alert the user to the presence of important operating and maintenance (servicing) instructions in the literature accompanying the appliance.



The lightning flash with arrowhead symbol, within an equilateral triangle, is intended to alert the user to the presence of uninsulated "dangerous voltage" within the product's enclosure that may be of sufficient magnitude to constitute a risk of electric shock to persons.



This symbol indicates that this product incorporates double insulation between hazardous mains voltage and user accessible parts.



This product utilizes a Class 1 laser to read Compact Discs. This laser Compact Disc Player is equipped with safety switches to avoid exposure when the CD door is open and the safety interlocks are defeated. Invisible laser radiation is present when the CD Player's lid is open and the system's interlock has failed or been defeated. It is very important that you avoid direct exposure to the laser beam at all times. Please do not attempt to defeat or bypass the safety switches.

## FCC Notice:

NOTE: This equipment has been tested and found to comply with the limits for a Class B digital device, pursuant to Part 15 of the FCC Rules. These limits are designed to provide reasonable protection against harmful interference in a residential installation. This equipment generates uses and can radiate radio frequency energy and, if not installed and used in accordance with the instructions, may cause harmful interference to radio communications. However, there is no guarantee that interference will not occur in a particular installation. If this equipment does cause harmful interference to radio or television reception, which can be determined by turning the equipment off and on, the user is encouraged to try to correct the interference by one or more of the following measures:

- Reorient or relocate the receiving antenna.
- Increase the separation between the equipment and receiver.
- Connect the equipment into an outlet on a circuit different from that to which the receiver is connected.
- Consult the dealer or an experienced radio/TV technician for help.

**WARNING:** Changes or modifications not expressly approved by the party responsible for compliance could void the user's authority to operate the equipment.

This equipment complied with FCC radiation exposure limits set forth for an uncontrolled environment. The ETL logo & Laser making are placed inside battery compartment of the unit.