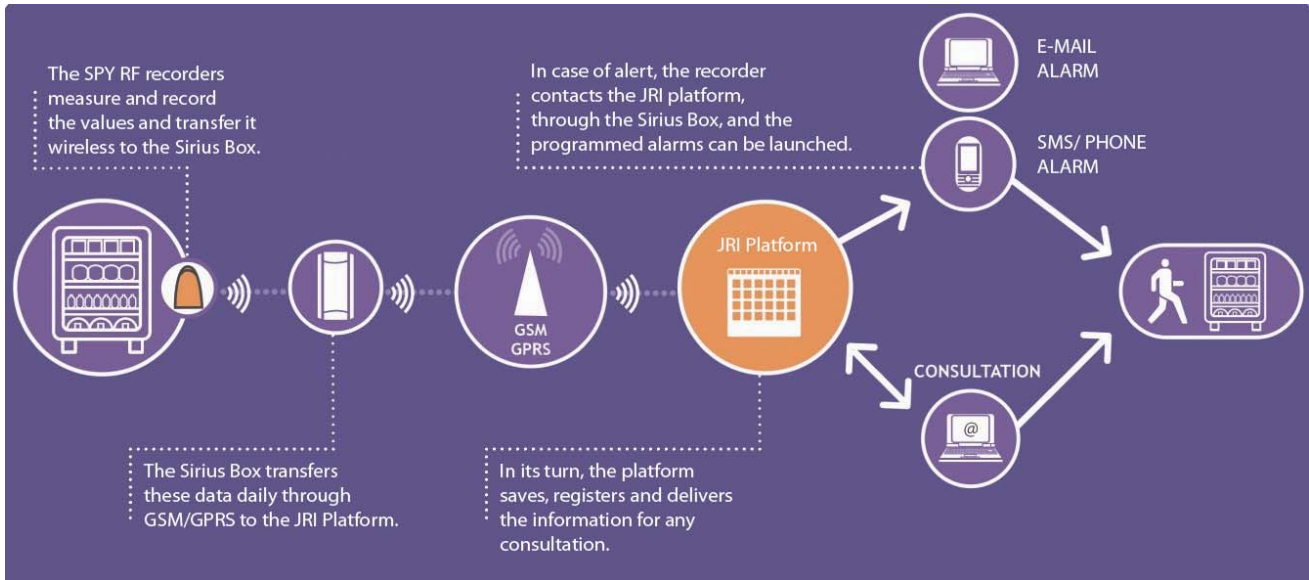


Installation guide

Congratulations - you have just purchased a SiriusWeb solution. Once installed, SiriusWeb will allow you to monitor your storage or living areas and consult the measurements from any PC connected to the Internet.



Function diagram



Provided material

Unpack carefully your parcel and check that you have all the below mentioned items. Then proceed with the installation of the SPY RF and your SiriusBox as described below.

1- The SPY RF recorders



Ambient probe model SPY RF T+, Green, Air and TH



Remote probe model SPY RF U, N and C

2- The SiriusBox includes a wall mounting bracket and a power supply cord.

3- One wall mounting bracket for each SPY RF recorder (only supplied with remote probe SPY RF recorders).

4- Double-sided adhesive tape for each SPY RF recorder (only supplied with remote probe SPY RF recorders).

Your **12** step installation guide

1 Connect your probes

Note: Go straight to Step 2 if you have an orange SPY RF T+, Mini SPY Green or SPY RF TH -type recorder.

Connect the probes to the SPY RF only if you have a model with a remote probe (refer to the user manual of the SPY RF recorders).

2 Install your SPY RF recorders

Note: JRI advises you to consult your certified SPY RF installer in order to carry out the installation of the recorders properly.



> **Ambient recorders (SPY RF T+, TH, Green, Air)**

Place the recorder(s) in an upright position inside the compartment/chamber/area you want to monitor, about two thirds up.

or



> **Remote recorders (SPY RF U, M or C)**

Place the recorder(s) outside the compartment/chamber/area in an upright position as high up as possible on the exterior partition (of the compartment/chamber). A wall mounting bracket and double-sided adhesive tape are provided for this purpose.

The probe connected to the recorder must be placed in the centre inside the compartment/chamber/area in order to register a temperature as uniform as possible.

Put the flat cable of the probe through the door seal at the level of the hinges of your compartment/chamber.

3

Install your SiriusBox



Choose an appropriate place on the wall close to a socket. It is important that you are in a GSM coverage area. The SiriusBox must be placed at a reasonable distance from the SPY RF recorders (max. 50 m).



Fix the wall mounting bracket to the wall in an upright position (at a height of 2 m minimum and 50 cm from the ceiling). The release lever should turn upwards. Depending on the surface of the wall, use two screws or double-sided adhesive tape or Velcro.



Fasten the SiriusBox on the wall mounting bracket by sliding it upwards, then downwards until you hear a click.

(note: to unfasten the SiriusBox, push gently on the release lever, push the box upwards and then downwards).

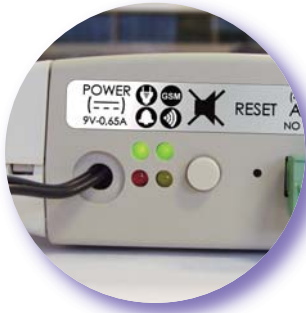
4

Connect your SiriusBox



Plug the adapter into the socket.

At the bottom of the box, the first green LED lights up indicating that the SiriusBox is powered.



The second green LED lights up when the connection to the GSM network is established. It turns on 10-30 seconds after being connected. If it does not, this means that there is an insufficient GSM coverage. In this case, move the device and try again.



The yellow LED indicates that data exchanges between the SiriusBox and the SPY RF recorders are taking place.



The red LED indicates that an alert is on.

5 Start your recorders

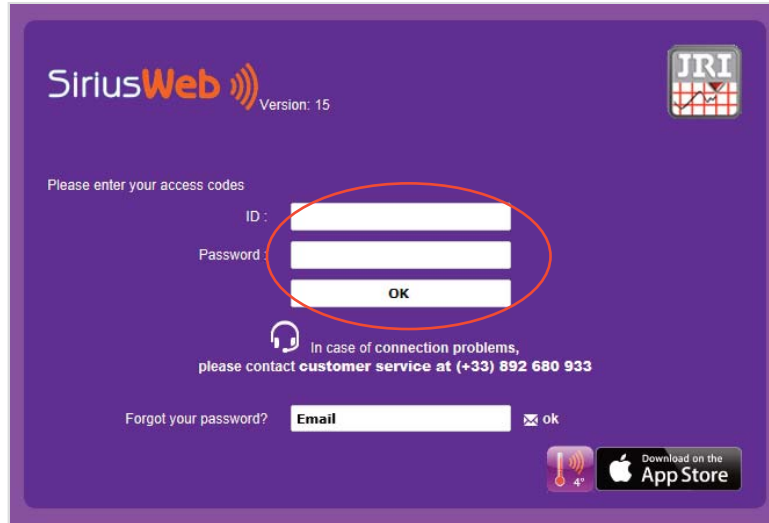


If the temperature is not displayed on the SPY RF recorder(s), press the push-button for at least 5 seconds to set it going (refer to the user manual of the recorders...). Your system is now working.

6

Log on to the SiriusWeb

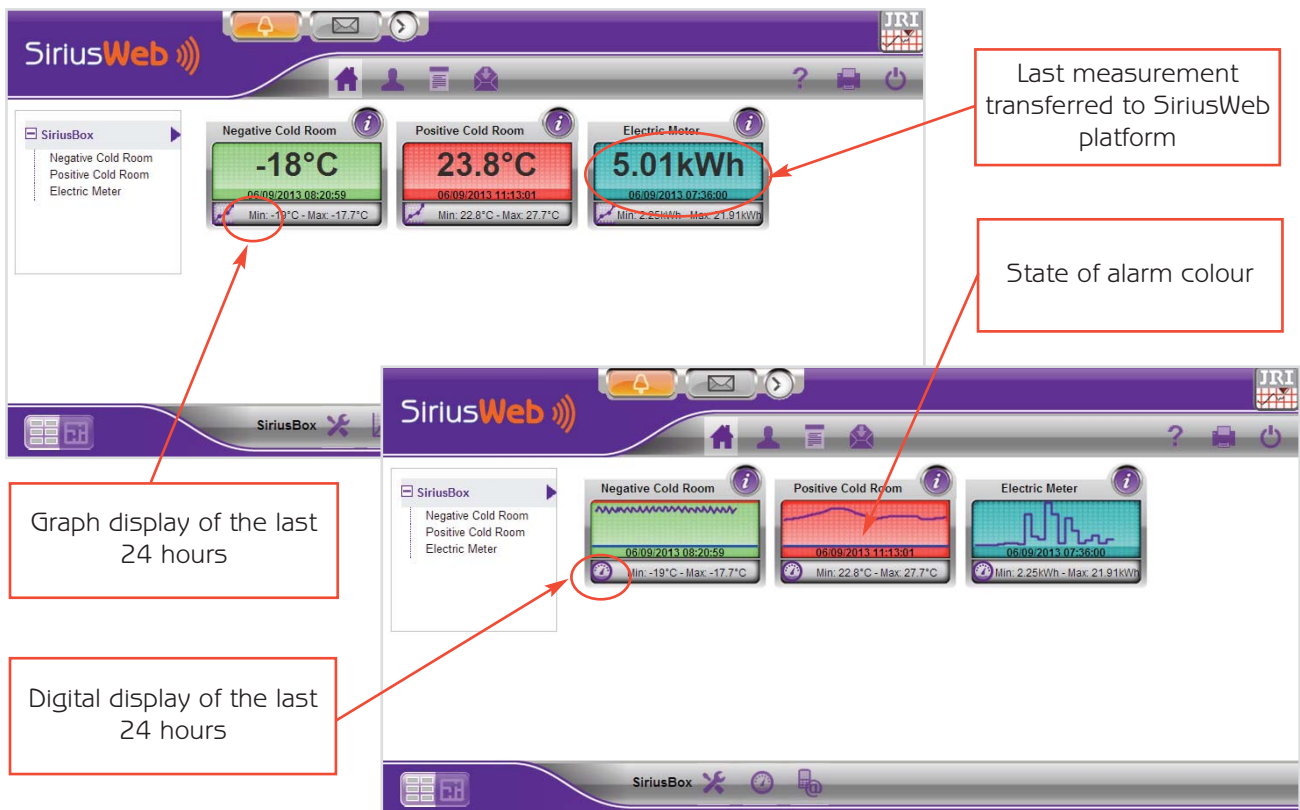
Log on to the www.jri-maxant.com website using your login and password. Click "CUSTOMER ACCESS" in the upper right corner. A window appears. Enter your login and password, then click "OK" .



7

Display


General consultation of all your monitored units (M.U.) straight from the home page.

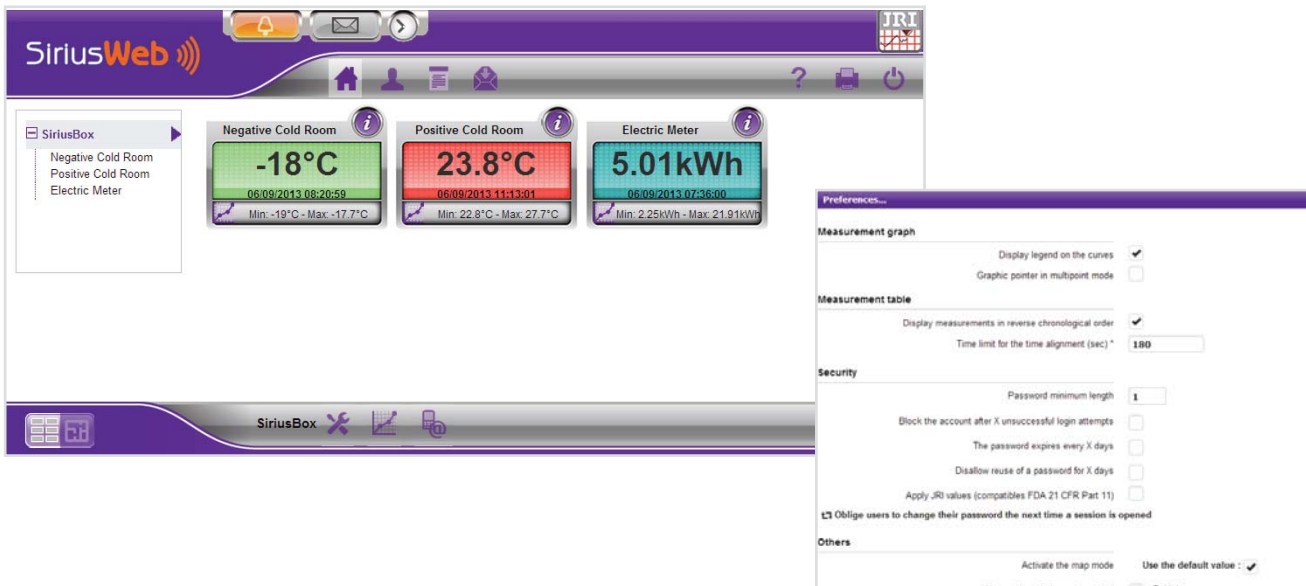


Note : Generally, the locally recorded data is transferred to the SiriusWeb platform every 3 hours to be displayed.

8

Manage your profiles (Site manager only)


When you click "PROFILE" , you can set different logins and passwords to access the SiriusWeb website and then manage multiple profiles: user, administrator...

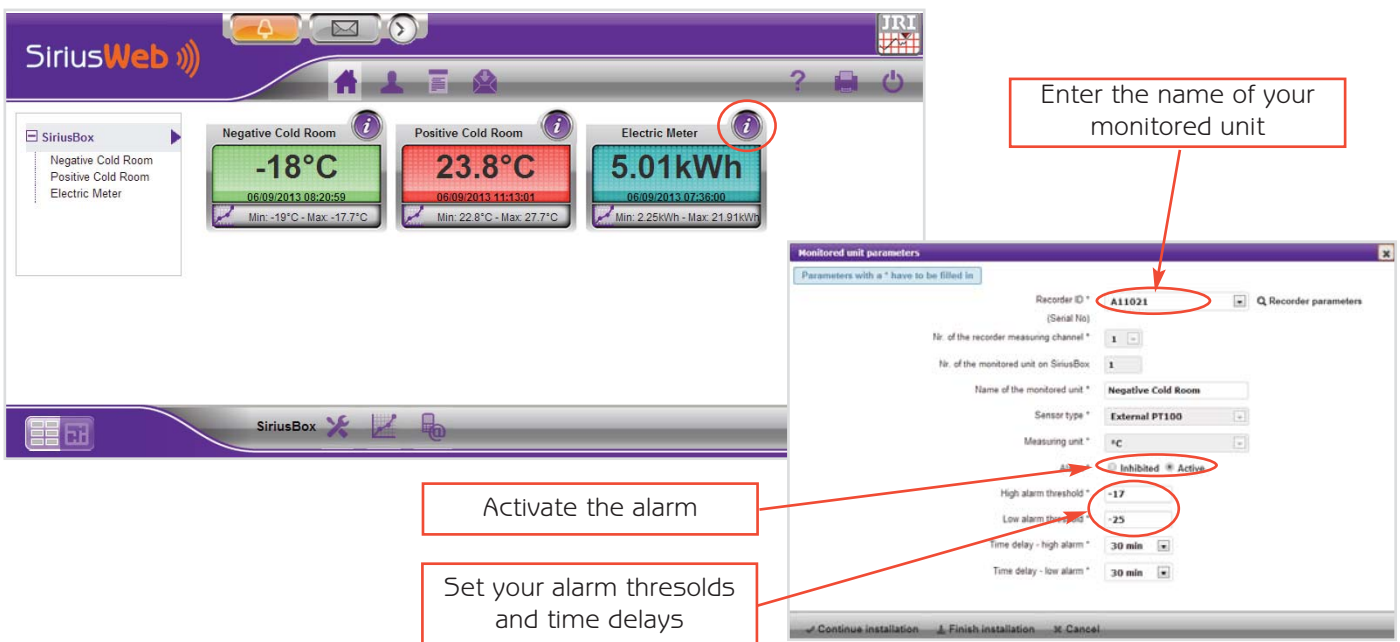


9

Activate your threshold alarms and your time delays

(Site manager only)

Click on the button  to open the monitored unit parameters. Enter the name of your monitored unit and activate the alarm of your recorder. Set also your alarm thresholds and time delays. Once these fields are filled in, click on "FINISH INSTALLATION". If you have more than one monitored unit to configure, click on "CONTINUE INSTALLATION". After having registered/entered all your devices, click on "FINISH INSTALLATION".



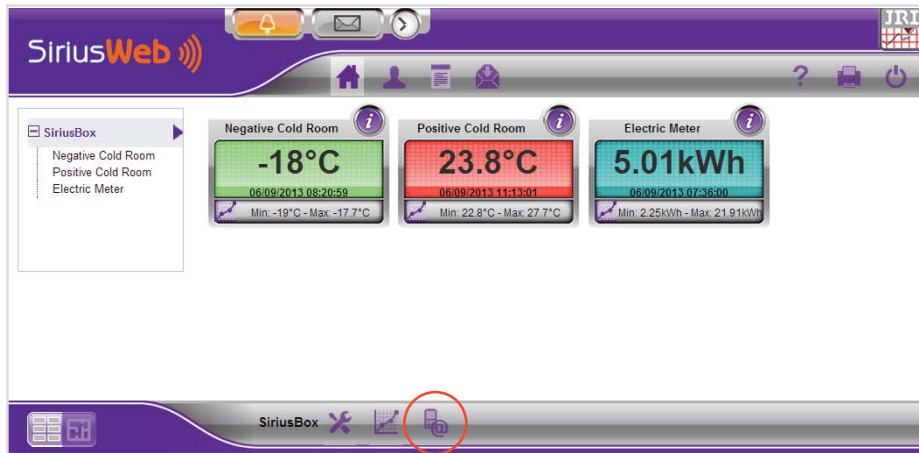
Note : JRI advises to have data for each monitored unit for at least a couple of days in order to determine the threshold values and the time delays.

10

Activate your alarms (Site manager only)

JRI advises to set several different types of alarms.

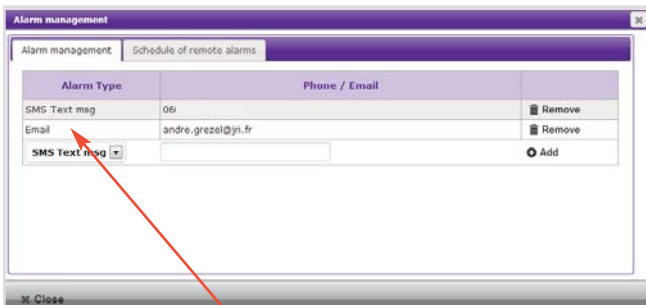
Click on the "ALARM MANAGEMENT" icon



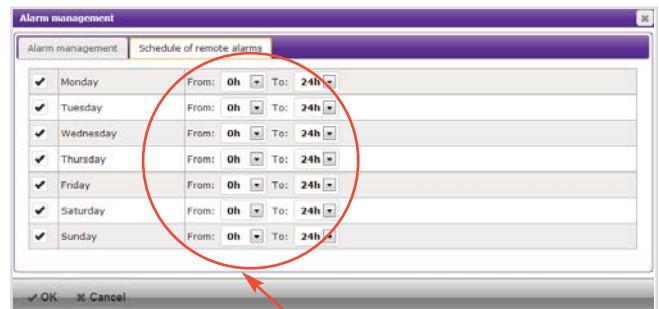
A- Remote alerts

Configure your alert types (SMS text message, email, phone call) and your remote alarms. The remote alarms planning is used to activate the monitored units' alerts during a specific period of time. Once the type of alerts is selected, click on "ADD".

SMS / Text message	Phone call	Email
2 phone numbers can be configured	2 phone numbers can be configured	Unlimited email addresses
One single SMS text message is sent	3 attempts every 15 minutes	Every email is sent once
Acknowledgment is possible	Acknowledgment is possible	No acknowledgment

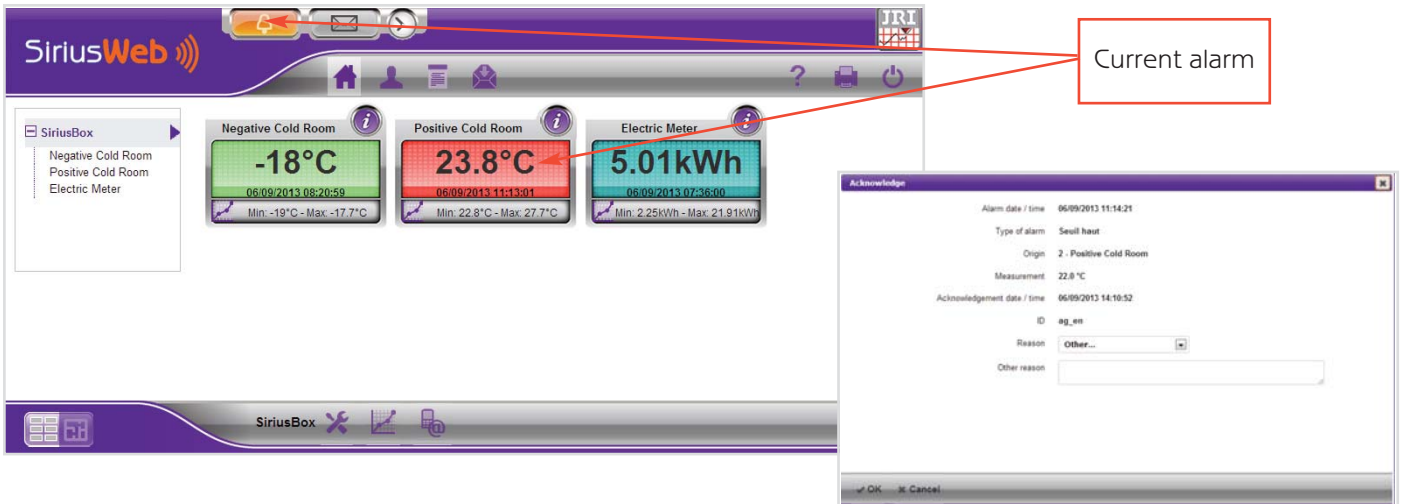


Alarm types



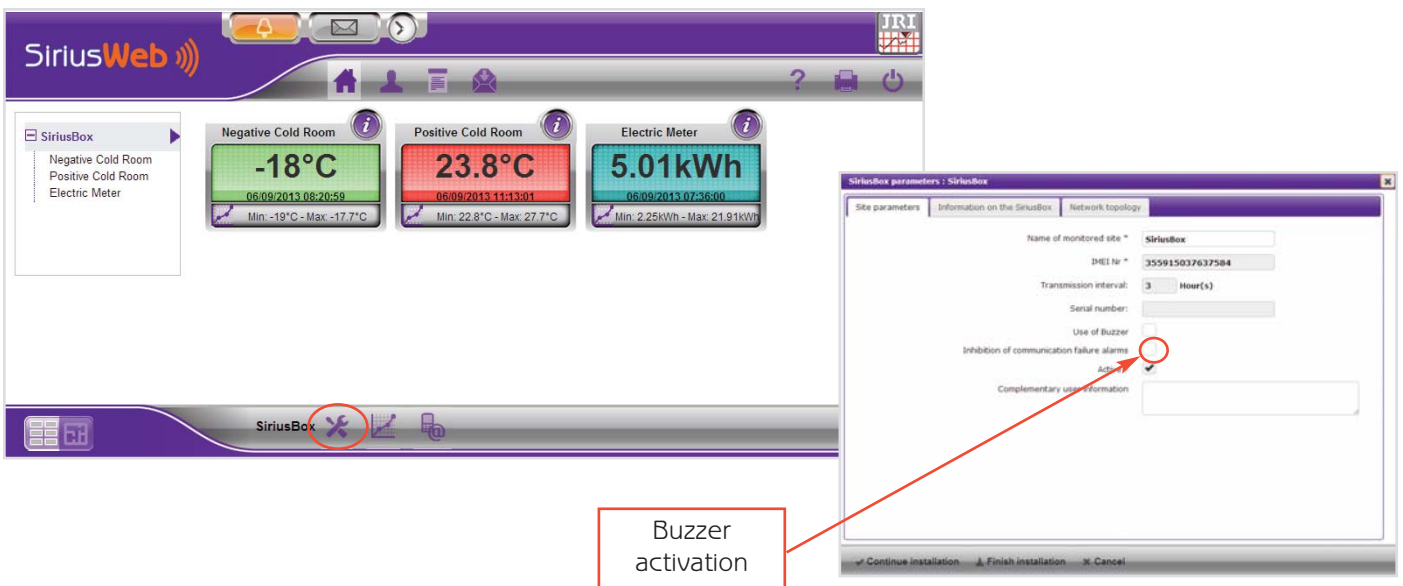
Remote alarms schedule

In case of alert, click on "ALARM LIST"  and indicate the reason of the alarm.



B- Local alerts

If you want to be locally alerted, click on "SiriusBox parameters" and activate the buzzer of your SiriusBox which beeps in case of alarm.



In case of alarm, acknowledgment of the buzzer is achieved in the same way as for remote alarms.

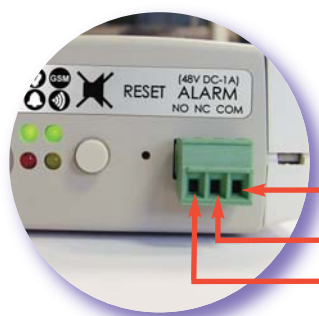
You can shut down the buzzer by pressing on push button 

However, it is necessary to give the reason of the alarm on the SiriusWeb interface.

If necessary (persistent default or problem to connect to SiriusWeb), it is possible to reset the SiriusBox by inserting a metal rod (paperclip) into the hole provided for this purpose (RESET).

Note : It is possible to install an additional alarm system allowing to send alarms even if the GPRS signal is down (voice dialer, sound and visual alarm device, transmission to a telemonitoring company ...).

Connection with an additional alarm system



Relay output :


Common

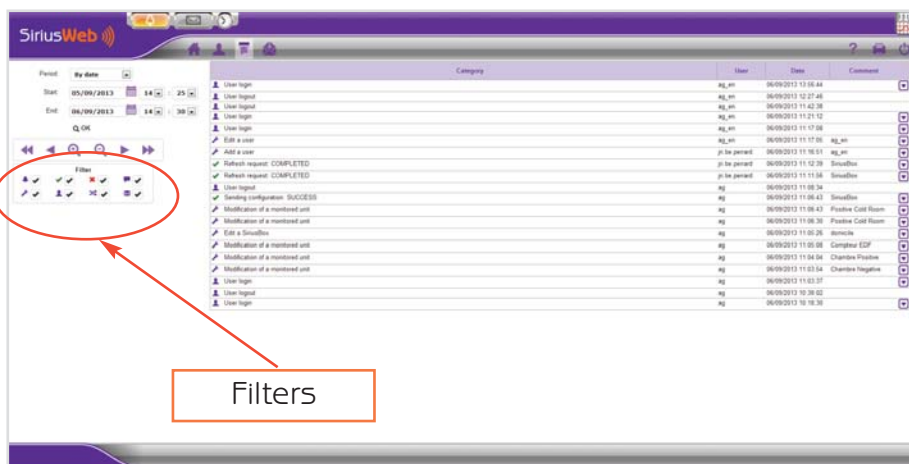
NC (normally closed)

No (normally opened)

11

Review the Audit trail

While clicking on , you can review the complete list of operated actions on your installation. You can sort the information per type of events.



12

Configure a weekly report by email

You can receive a weekly report (every Tuesday) presenting a sum up of your data.

To configure it, access your profile by clicking on the icon 

In "Preferences" select the case "Activate the remote reading" and type the email address of the addresse(s) of the report.

Advice to check that your installation is working

Before going through the checking steps, please wait for 8 hours while the system is turned on.

Unplug the Sirius Box. You should receive an alert depending on the pre-programmed alerts.

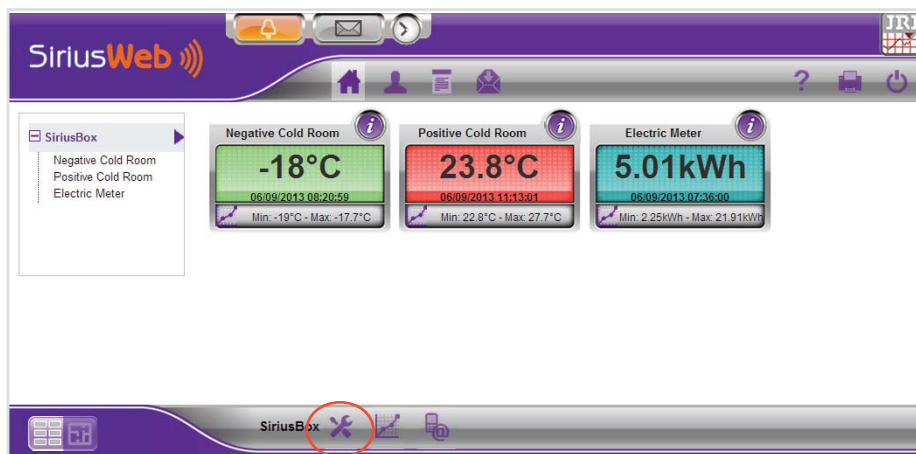
If you don't receive any alert, follow the steps:

1/ Check your alerts programming (Buzzer and/or text message, email, voice message) on Sirius-Web.

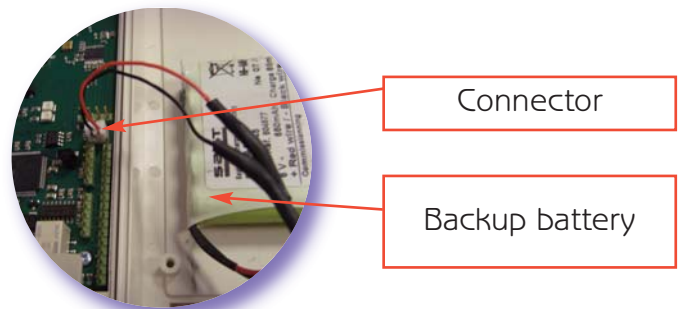
2/ Check the connection of the power supply of the SiriusBox.

3/ Check the GPRS communication level.

Click on "SIRIUSBOX PARAMETERS" to access the information on the SiriusBox. The minimum level of communication is 2 grades.



4/ Check the connection of the backup battery.



Open the Sirius Box with the help of a pen placing it inside both holes on the upper and down sides of the SiriusBox.

Check that the connector of the backup battery is connected to the electronic board.

Your installation should now be working. However if you still don't have any communication, please contact our technical support.

Advice to check measurement upload

- 1/ Check that temperature is displayed on the LCD screen or that the leds are blinking.
- 2/ Check that the measurements of your monitored units displayed on SiriusWeb are less than 8 hours.

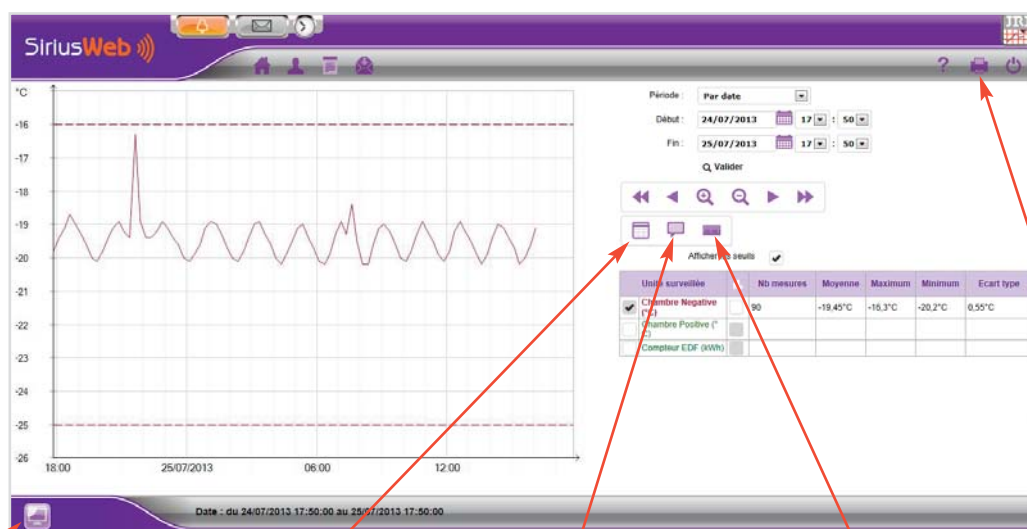
In case of failure

If the lights are off, check the power of the SiriusBox by checking the plug.

If the SiriusBox does not work, perform a soft reset by inserting a metal rod (such as a paper clip) into the hole provided for this purpose (RESET).

If there are no longer measurements on SiriusWeb, check that the recorders are on. If they are off, press at least 5 sec their push button to turn them on. If they still do not start, replace the battery and turn on the recorders.

Icons glossary



Refresh measurements of all monitored units linked to the SiriusBox

Display measurements list

Add a comment

Adapt the display of the curve according to the selected interval

Print the page

Key features

Radio features

Emission band	ISM 868 MHz
Maximum radiated power	10 dBm (10 mW)
Range with SpyRF satellites in buildings	Up to 50 meters depending on the environment

GPRS features

Emission band	GSM 900 MHz or DCS 1800 MHz (depending on the operator of the mobile subscription)
Maximum radiated power	2W in GSM mode 1W in DCS mode

Electrical features

Power supply	Adapter plug (European model) with regulated output voltage : input: 230 V CA output: 9 V CC - 650 mA cord fixed: 1,80 m
Power consumption	Average consumption : 0,5 W Peak consumption : 5 W
Backup battery	NiMH capacity 650mAh
Backup battery lifetime	Fully operational autonomy : 12h rs Loading time : 100hrs

Mechanical and environmental features

Dimensions	154x84x37 mm
Weight	270g (without adapter)
Protection index	IP20 - to be used indoors only
Conditions of use	0°C to 50°C - 0 to 90% RH
Pollution / altitude (IEC 61010-1)	Degree of pollution : 2 Operating altitude: 0 to 2000m

Installation Precautions

SiriusBox hub must be fixed in a vertical position (such as that SpyRF satellites). A wall mounting bracket is provided. This support can be fixed to the wall with two screws, or with a double-sided adhesive (also provided). The SiriusBox should not be fixed on a metal surface and in a place with insufficient GSM network coverage. A socket should be available nearby (within a maximum of 3m) to allow plugging in the AC adapter. It serves as the disconnecting device.

WARNING

This unit contains a rechargeable NiMH battery. Never attempt to disassemble, to charge and to short circuit. Always use the battery correctly, do not expose to temperatures above 100 ° C, do not wet and respect the polarities. Keep the battery out of the reach of children. Always replace the battery with the templates provided by JRI. They have a undeceived connector to prevent polarity reversal.

JRI disclaims all liability for use of a different battery. In case of non-compliance with these instructions, alkalins hydroxides may leak from the valve safety.

Symbols



RECYCLING: Do not dispose in a landfill or in a container collection waste. Comply with the legislation for the disposal.



ELECTRICAL POWER: This unit is DC powered from a 230 V AC adapter. Comply with the safety rules in the use of electric power. Use an electrical installation complies with the legislation.



CE MARKING: This device is certified to the European regulations for electrical safety, flammability, radiation emission disturbing and immunity to electrical interference nearby.



ELECTRICAL INSULATION: This device is protected by a double electrical insulation or electrical insulation reinforced.

Maintenance

No maintenance is necessary. For cleaning, do not use water but a dry cloth.

Safety / Certifications

CE radio compliant : EN 301 489 / EN 300 220 / EN 61010 / EN 301 511

Warranty

JRI products carry a one year warranty and guarantee against defects in their components or workmanship.

During this period if any product supplied by the Company proves on inspection to be defective, the Company will at its own option replace the same or refund to the Buyer the price of the product.

In no circumstances will JRI' liability exceed the price of the product paid by the buyer or the cost of replacement.

JRI shall not in any event be liable to the Buyer for any indirect or consequential loss or damage costs or expenses whatsoever which might arise out of or in connection with the supply of the product or its consequent use.

Consequently, the products warrantee and guarantee specified above, does not cover damage caused by fair wear and tear, abnormal storage conditions, incorrect use, accidental misuse, abuse, neglect, misapplication or modification, or use with non-JRI' hardware/software. No warranty of fitness for a particular purpose is offered and the user assumes the entire risk of using the product.

In line with our policy of continuous development, we reserve the right to amend our product specification without prior notice.

Recycling

If it must be discarded, this equipment must be in compliance with the legislation on electronic equipment. It should never be disposed in the landfill or never be treated by the services of the road. For more information, call the JRI customer service.

Important note

FCC ID Box=W4510620-03

FCC ID GPRS=N7NWI5MO228

FREQUENCY

This device is designed to operate in the band [902.22 – 904.149] MHz.

FCC COMPLIANCE STATEMENT

This device complies with part 15 of the FCC Rules. Operation is subject to the following two conditions: This device may not cause harmful interference, and must accept any interference received, including interference that may cause undesired operation.

INFORMATION TO THE USER

The user's manual or instruction manual for an intentional or unintentional radiator shall caution the user that changes or modifications not expressly approved by the party responsible for compliance could void the user's authority to operate the equipment.

FCC RADIATION EXPOSURE STATEMENT

The antenna(s) used for this transmitter must be installed to provide a separation distance of at least 20 cm from all persons.

Minimal configuration

Internet Browser :

Internet Explorer 7 +, FireFox 1.0 + and Chrome 1.0 + and Safari 2.0 +.

Screen resolution: 1280px * 680px at least

Javascript must be enabled.

SiriusWeb iPhone App

You can now have SiriusWeb on your iPhone. Go on AppStore, download the App and enter your login and password.



The iPhone SiriusWeb App offers the following functions:

- Display all your monitored units : temperature values, thresholds, measurement graph
- Management of alarms and history
- Send email to our technical support

It is also available in German, Spanish, Italian, Portuguese and Dutch.



Technical assistance

Our technical support is at your disposal on

+33 3 63 15 80 07

Indicate your SiriusWeb login

click 

in the upper right corner of the siriusweb.fr site in order to forward us your question.

or

click 

In the upper right corner of the SiriusWeb.fr website to access the FAQ

