

Curbside Valet (CURBTX)

User Manual

LEE TECHNOLOGY KOREA CO., LTD.

email sales@leetek.org

website www.leetekorea.com

KOREA HEADQUARTER

3rd Fl. 499-2, Sang3-dong,
Wonmi-gu, Bucheon City,
Kyunggi-do, Korea
Tel +82-32-324-9838
Fax +82-32-324-9840

US OFFICE

530 Highland Station Drive, Suite 2004,
Sewanee, GA 30024, U.S.A.
Tel +1-678-714-2161
Fax +1-678-714-2162

NOTICE

This manual, software and electronic circuitry are copyrighted. All rights reserved. Under the copyright laws, this manual, software and electronic circuitry may not be copied, in whole or in part without written prior consent of Lee Technology.

All information provided in this document is carefully prepared and offered in good faith as a guide in the installation, use and servicing of our products. Installers must ensure that the final installation operates satisfactorily within the relevant regulatory requirements. Lee Technology accepts no responsibility for incorrect installation. Lee Technology reserves the right to change products, specifications and installation data at any time without notice.

Lee Technology makes certain limited warranties with respect to defective diskettes, documentation and electronic circuitry. Please see the associated information contained on this page.

LIMITED WARRANTY

With respect to the physical documentation and physical electronic circuitry enclosed herein, Lee Technology warrants the same to be free of defects in materials and workmanship for a period of one year from the date of purchase. In the event of notification within the warranty period of defects in material or workmanship, Lee Technology will replace the defective diskettes, documentation and electronic circuitry. The remedy for breach of this warranty shall be limited to replacement and shall not encompass any other damages including but not limited to loss of profit and special incidental, consequential, or other similar claims.

Lee Technology Korea specifically disclaims all other warranties, expressed or implied, including but not limited to implied warranties of merchantability and fitness for a particular purpose with respect to defects in the documentation and electronic circuitry and the program license granted herein, in particular, and without limiting operation of the program license with respect to any particular application, use or purpose.

IMPORTANT SAFETY INFORMATION

FCC Caution

Any changes or modifications in construction of this device which are not expressly approved by the party responsible for compliance could void the user's authority to operate the equipment.

CE Caution

Risk of explosion if battery is replaced by an incorrect type. Dispose of used batteries according to the instructions.

Industry Canada Statement

This device complies with Industry Canada license-exempt RSS standard(s).

Operation is subject to the following two conditions:

- 1) This device may not cause interference.**
- 2) This device must accept any interference, including interference that may cause undesired operation of the device.**

This equipment complies with IC radiation exposure limits set forth for an uncontrolled environment. This equipment should be installed and operated with minimum distance 20cm between the radiator and your body.

Cet appareil radio est conforme au CNR-210 d'Industrie Canada. L'utilisation de ce dispositif est autorisée seulement aux deux conditions suivantes : (1) il ne doit pas produire de brouillage, et (2) l'utilisateur du dispositif doit être prêt à accepter tout brouillage radioélectrique reçu, même si ce brouillage est susceptible de compromettre le fonctionnement du dispositif.

Cet équipement est conforme aux limites d'exposition aux rayonnements IC établies pour un environnement non contrôlé. Cet équipement doit être installé et utilisé avec un minimum de 20cm de distance entre la source de rayonnement et votre corps.

Safety Precautions

- 1. Avoid exposing this product to direct sunlight for extended periods of time, and keep it away from heat sources.**
- 2. There is a risk of malfunction if product is used in places where sudden or extreme temperature changes occur.**
- 3. Applying excessive force or impact to this product may result in product damage, and will void warranty.**
- 4. Never attempt to disassemble or service this product yourself. Doing so can result in electrical shock and void warranty.**

RF Exposure Information

The antenna used for this transmitter must be installed to provide a separation distance of at least 20cm from all persons and must not be co-located or operating in conjunction with any other antenna or transmitter.

Caution:

- 1. Battery may explode if replaced with an incompatible battery. Dispose the used batteries according to the instructions.**
- 2. Antenna shall be mounted in such a manner to minimize the potential for human contact during normal operation. The antenna should not be touched during operation to avoid the possibility of exceeding the FCC radio frequency exposure limit.**

Environmentally friendly disposal and recycling

To protect the environment, dispose this product separately from household waste once it has reached its end of life, or take it to your local electronic waste disposal center.

1. SYSTEM INTRODUCTION

1) SYSTEM SUMMARY

Using ultrasonic sensor, CURBTX is a monitoring unit that detects a vehicle standing on a certain spot and sends out a notification signal to designated pagers. The ultrasonic sensor turns on regularly and detects an object (vehicle), if it is located within 3m from the unit.

2) SPECIFICATION

FEATURE	BENEFIT
TECHNOLOGY	<ul style="list-style-type: none">◦ UHF Technology (450.0250 ~ 469.9750MHz)◦ Perfect for large restaurant, Café and Bar(Parking Area)◦ Wireless Paging System
TRANSMITTER	<ul style="list-style-type: none">◦ POCSAG Code◦ Operate in FM mode on UHF◦ Output Power: 40mW below◦ Dimension: W(110) X D(150) X H(145)mm◦ Weight: 774.5g◦ PC Programmable (ID, Frequency, Restroom Name)◦ Battery operate (Alkaline 1.5V x 3EA, D size)◦ 40kHz Ultrasonic Sensor
Alpha PAGER	<ul style="list-style-type: none">◦ POCSAG Code◦ 1 kinds of pager (Belt Type)◦ Belt Type – Rechargeable (with own charger base)◦ Automatic Back Light◦ Various Alert Type (Vibe / Beep / Flash) Selectable◦ Auto Delete◦ Waiter & Manager Pager Available
RESTAURANT SYSTEM ID	<ul style="list-style-type: none">◦ Unique Base ID to eliminate overlapping message
APPLICATION	<ul style="list-style-type: none">◦ Restaurant, Café and Hotel

2. INSTALLATION

1) EQUIPMENT SETUP

(1) PC Program (Manufacturer Only)

LEE TECHNOLOGY KOREA.

① TO GO Restroom

② COM PORT: COM1 [OPEN] [CLOSE]

③ BASE ID: 070 ④ ID: 999 MGR ID: [] OPTION: Normally Open ⑤ Signal Speed: 1200 Bps ⑥ Frequency: 457.5750 MHz

	Tone	Message	Tone	Message
1	A	LINE1	9	LINE9
2	A	LINE2	10	LINE10
3	A	LINE3	11	LINE11
4	A	LINE4	12	LINE12
5	A	LINE5	13	LINE13
6	A	LINE6	14	LINE14
7	A	LINE7	15	LINE15
8	A	LINE8	16	LINE16

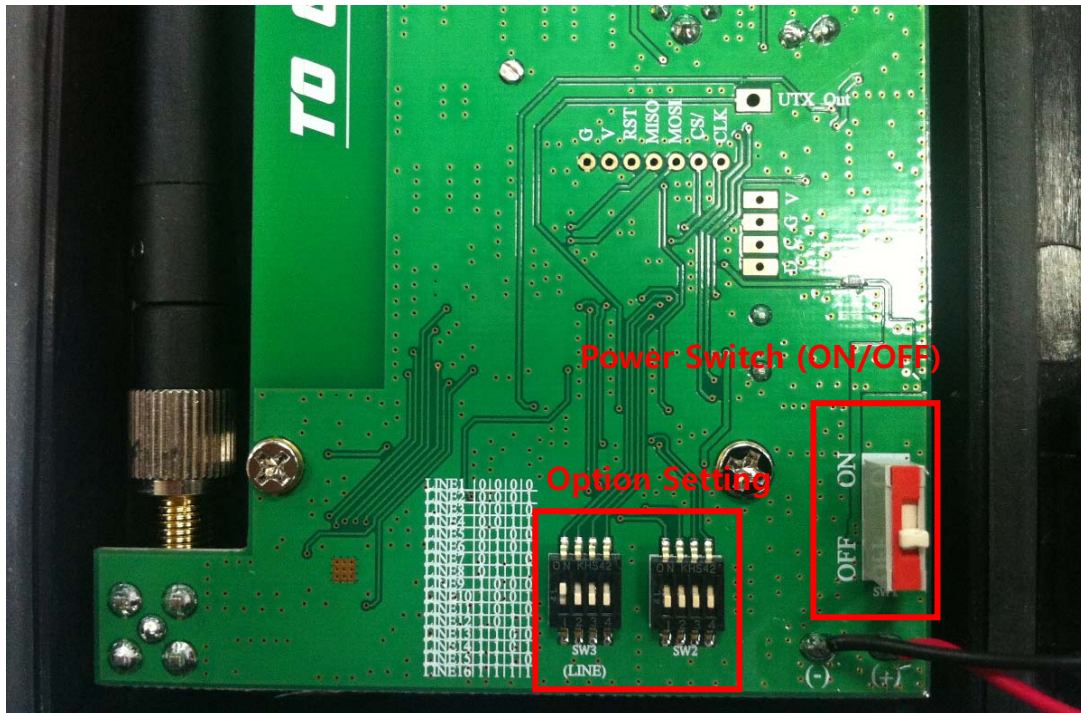
STATUS >> COM1, 9600, 8, 2, 0 Connect Serial Data >>

[READ] [WRITE] [SAVE] [LOAD] [Exit]

- ① Select "TO GO".
- ② Select COM PORT number and click "OPEN".
- ③ Setup base ID (base ID should match to pagers'), (001~200, Max 3 digits)
- ④ Setup waiter ID (paging starts when counts reach the previously set number), (1~1249, Max 4 digits)
- ⑤ Signal Speed: 1200bps or 512bps
- ⑥ Frequency : 430.0250 ~ 469.9750 MHz
- ⑦ Parking space (line) name assignment (up to 16 letters including spaces)

(2) CURBTX Option Setting

The option setting must be done prior to powering up.



As shown in the photo above, there are two option switches inside the CURBTX unit. The switch on the left is to select a parking space (line) among the 16 spots assigned in the PC program, and the one on the right is to add additional options.

(The current setting value in the picture above is "1000", "0000".

The first left pin of the switch on the right is for ultrasonic sensor range extension.

If it is "0" as shown in the picture, the sensor detects an object within the range 2.8m. Switching to "1" will extend the range.

The second left pin of the switch on the right is to put the unit in test or normal modes. As shown in the picture, "0" is the normal mode, and the sensor starts detecting on every pre-set wakeup time when the pin is switched to "1".

To assign a certain parking space (line) among the 16 spots, make following combinations by switching each pin of the left switch.

"0000" (#1), "0001" (#2), "0010" (#3), "0011" (#4), "0100" (#5), "0101" (#6), "0110" (#7), "0111" (#8), "1000" (#9), "1001" (#10), "1010" (#11), "1011" (#12), "1100" (#13), "1101" (#14), "1110" (#15), "1111" (#16)

(3) CURBTX Installation

Insert batteries properly when the option setup above is complete. (1.5V x 3EA, D size)

Use 3 alkaline batteries (1.5V, Size D). Batteries should last over two years under the condition of paging 20 times a day.

A message "Startup Complete" will appear on each pager when the power is switched on. (Ensure batteries have been properly installed if no message appears on pager displays. Try to power off and on the unit again.)

Receiving the message "Startup complete" means the system is ready for operation.

Position and install the CURBTX unit on a desired fixture.

The unit should be positioned 60cm above ground. (The ultrasonic sensor might not work properly if the unit is positioned less than 60cm above ground.)

The unit is strongly recommended to be horizontally aligned for direct facing an object right in the front.

3. OPERATION

1) LINE NO.

CURBTX scans for an object within 2.8m range every 10 seconds and transmits a message to a pager when detecting any. (Ex. "LINE 1")

2) Error message for an object standing too close

An error message will appear on a pager when there is an object within 30 to 40cm distance from the sensor. Check CURBTX and see if there is any unwanted object within the range of the sensor.

3) Battery Level Message

CURBTX transmits a signal to a pager when its battery level is low. The unit starts sends out low battery messages when the level is 20%, 15%, and 10%. All batteries should be replaced when the level is below 10%.