

Guest Tag, Gateway Manual

LEE TECHNOLOGY KOREA CO., LTD.



KOREA HEADQUARTER

*Leetek Building, 47, Ojeong-ro, Bucheon-si,
Kyunggi-do, Korea
Tel +82-32-324-9838
Fax +82-32-324-9840*

*email sales@leetek.org
website www.leetekorea.com*

US OFFICE

530 Highland Station Drive, Suite 2004,
Suwanee, GA 30024, U.S.A.

*Tel +1-678-714-2161
Fax +1-678-714-2162*

LEE TECHNOLOGY KOREA CO., LTD.

contents

NOTICE

This manual, software and electronic circuitry are copyrighted. All rights reserved. Under the copyright laws, this manual, software and electronic circuitry may not be copied, in whole or in part without written prior consent of Lee Technology.

All information provided in this document is carefully prepared and offered in good faith as a guide in the installation, use and servicing of our products. Installers must ensure that the final installation operates satisfactorily within the relevant regulatory requirements. Lee Technology accepts no responsibility for incorrect installation. Lee Technology reserves the right to change products, specifications and installation data at any time without notice.

Lee Technology makes certain limited warranties with respect to defective diskettes, documentation and electronic circuitry. Please see the associated information contained on this page.

contents

LIMITED WARRANTY

With respect to the physical documentation and physical electronic circuitry enclosed herein, Lee Technology warrants the same to be free of defects in materials and workmanship for a period of one year from the date of purchase. In the event of notification within the warranty period of defects in material or workmanship, Lee Technology will replace the defective diskettes, documentation and electronic circuitry. The remedy for breach of this warranty shall be limited to replacement and shall not encompass any other damages including but not limited to loss of profit and special incidental, consequential, or other similar claims. Lee Technology Korea specifically disclaims all other warranties, expressed or implied, including but not limited to implied warranties of merchantability and fitness for a particular purpose with respect to defects in the documentation and electronic circuitry and the program license granted herein, in particular, and without limiting operation of the program license with respect to any particular application, use or purpose.

contents

IMPORTANT SAFETY INFORMATION

CAUTION:

To comply with FCC RF exposure compliance requirements, a separation distance of at least 8 inches (20 cm) must be maintained between the antenna of this transmitter and all persons, during normal operation.

Industry Canada Radiation Exposure Statement

This equipment complies with IC radiation exposure limits set forth for an uncontrolled environment. This equipment should be installed and operated with minimum distance 20 cm between the radiator & your body.

Déclaration d'exposition aux radiations

Cet équipement est conforme aux limites d'exposition aux rayonnements IC établies pour un environnement non contrôlé. Cet équipement doit être installé et utilisé avec un minimum de 20 cm de distance entre la source de rayonnement et votre corps.

contents

IMPORTANT SAFETY INFORMATION

This device complies with Industry Canada's licence-exempt RSSs. Operation is subject to the following two conditions:

- (1) This device may not cause interference; and
- (2) This device must accept any interference, including interference that may cause undesired operation of the device.

Le présent appareil est conforme aux CNR d'Industrie Canada applicables aux appareils radio exempts de licence. L'exploitation est autorisée aux deux conditions suivantes :

- (1) l'appareil ne doit pas produire de brouillage, et
- (2) l'utilisateur de l'appareil doit accepter tout brouillage radioélectrique subi, même si le brouillage est susceptible d'en compromettre le fonctionnement.

FCC Compliance Statement

This device complies with part 15 of the FCC rules. Operation is subject to the following two conditions: (1) This device may not cause harmful interference, and (2) this device must accept any interference received, including interference that may cause undesired operation.

FCC Interference Statement

This equipment has been tested and found to comply with the limits for a Class B digital device, pursuant to part 15 of the FCC Rules. These limits are designed to provide reasonable protection against harmful interference in a residential installation. This equipment generates, uses and can radiate radio frequency energy and, if not installed and used in accordance with the instructions, may cause harmful interference to radio communications. However, there is no guarantee that interference will not occur in a particular installation. If this equipment does cause harmful interference to radio or television reception, which can be determined by turning the equipment off and on, the user is encouraged to correct the interference by one of the following measures:

- Reorient or relocate the receiving antenna.
- Increase the separation between the equipment and receiver.
- Connect the equipment into an outlet on a circuit different from which the receiver is connected.
- Consult the dealer or an experienced radio/TV technician for help.

contents

Intro.	2	How to Use Software	18
Guest Tag, Gateway System?		Geni Finder Sever	
Distance of Transmission and reception		Geni Finder Client	
Precautions			
Guest Tag, Gateway Components	5	How to install and use Table Tag Writer	28
Windows Operating System		Installation	
Component List		How to connect with PC	
Detailed name of Rear Side for Each items		Installation of Proprietary Software	
		Run	
		Read table tag Information	
		Change table tag Information	
Installation	8	Appendix	32
Installation		Specification	
Installation of Single Gateway Type		How to change BID, Freq. and Pager Number	
Installation (Serial Cable)		Problem Solutions	
Installation (USB to Serial Cable)			
S/W Installation	11		
Installation of Firebird			
Installation of Server			
Installation of Client			

GTA, GWAY System?

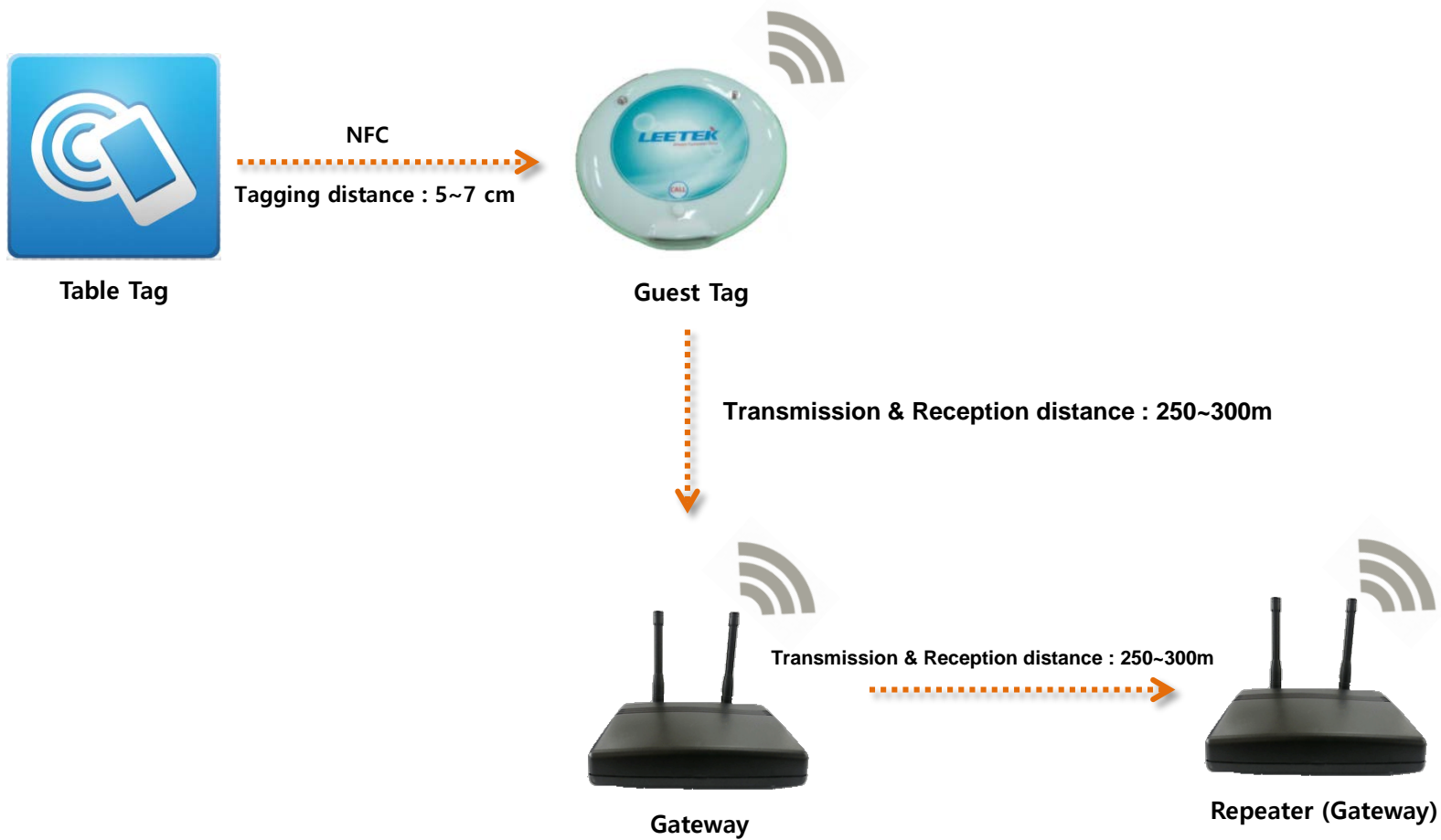
LEETEK **Guest Tag, Gateway System** was designed to help restaurant in order to manage customers effectively. Staff can provide best service by serving ordered foods to customers through Guest Tag, Gateway Solution.

In addition, operation flow for restaurant can be smooth and the restaurant has a high turnover ratio.

▶ Characteristics of Guest Tag, Gateway







- When Guest Tag alerts, Red light is supposed to flash.
- Call function : Call staff by pressing button on Guest Tag / Software shows call status.
- Charging way : Stacking / Guest Tag ID Changeable identically.

Transmission & Reception Distance



Cautions

User will be in danger or products will be damaged such as below cases.

	<p>Be careful to avoid foreign substance. If liquid things and foreign substance flows into products, products shall be malfunction.</p>
	<p>Stop using when products are malfunctioning. When products are malfunctioning, stop using and contact to A/S service team.</p>
	<p>Use products under proper temperature condition. Do not leave products in hot and cold spot. Required temperature : -10°C ~ 55°C</p>
	<p>Do not repair/dis-assemble In case products are repaired and dis-assembled temporarily, you can not take repair service at no cost.</p>
	<p>Do not give a shock to product. Unreasonable impact will be one of reason for breakdown.</p>
	<p>Do not set up at unstable place. Products can be ruined or People hurt by dropping products.</p>

● Guest Tag, Gateway COMPONENT LIST

Guest Tag,
Gateway

Windows Operating System



▶ Window 7 / 8



▶ Window xp

Guest Tag, Gateway COMPONENT LIST

Guest Tag,
Gateway

Components



Guest Tag



Gateway



Charger



Table Tag



Table Tag
Writer



Power Adaptor



USB Cable



1.3Ø Jack

2.0Ø Jack

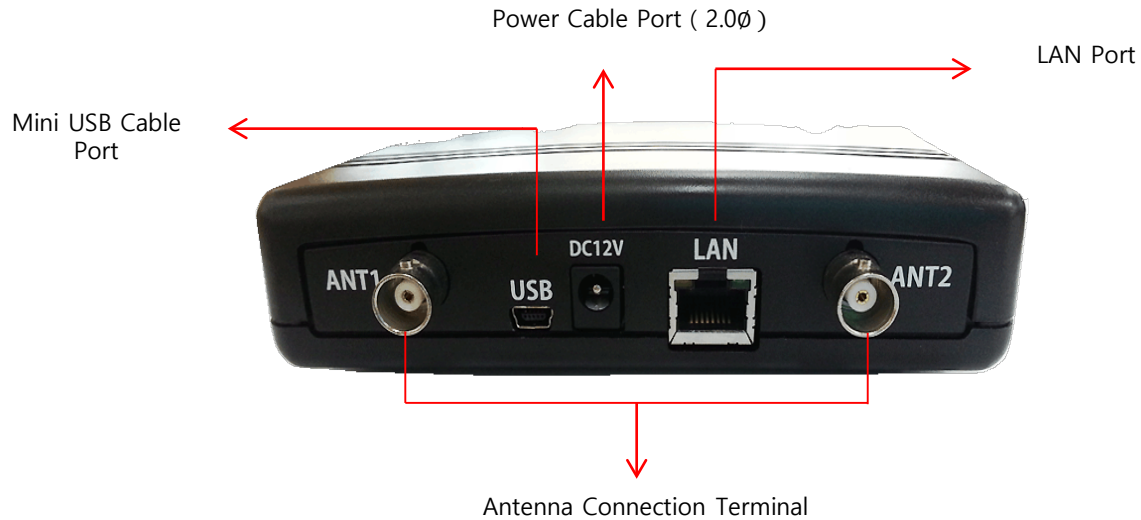


Ethernet
Cable

● Guest Tag, Gateway COMPONENT LIST

Guest Tag,
Gateway

Detail Name of Gateway



GWAY

● INSTALLATION

Basic Installation

► Charger

- Connect 1.3ø Power Cable.



Connection Point

Install a Single Gateway Type

1. Install a Serial Cable



- ① The two antennas, one of each connected to the ANT 1,2 back of the gateway. And then antenna erect side up.
- ② 2.0Ø power cable connected to the power on the back of the gateway.
- ③ The Mini USB cable connect to the PC, the other side USB part connect to the USB port on the back of the gateway.

● INSTALLATION OF Guest Tag, Gateway S/W

Install a Firebird



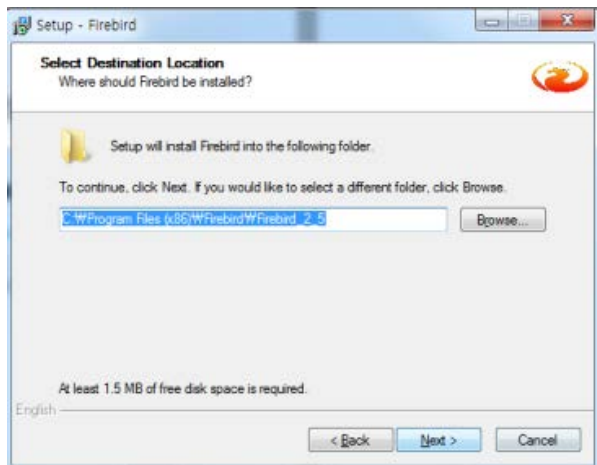
Before install the Server S/W and Client S/W, make sure to install "Firebird-2.5.2.26540_0_Win32" first.

- ① Running the Firebird setup file, after select "English" click the "NEXT" in the next window.

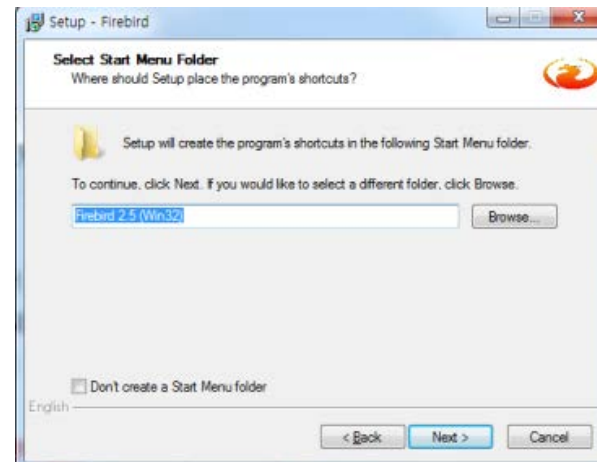


INSTALLATION OF Guest Tag, Gateway S/W

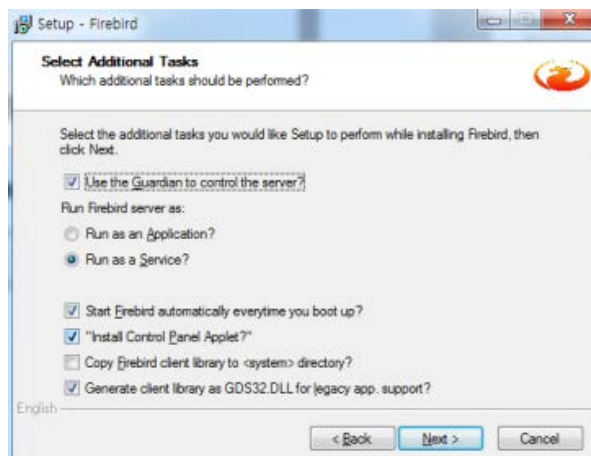
② Select the location where you want to save the file.



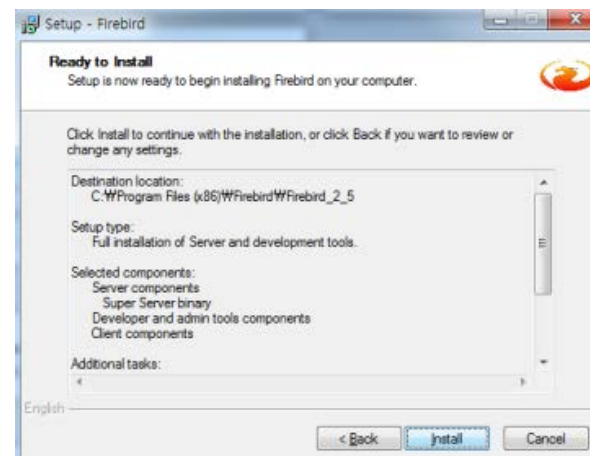
③ click on the "Next".



④ Leave the things that are selected, click on the "Next".

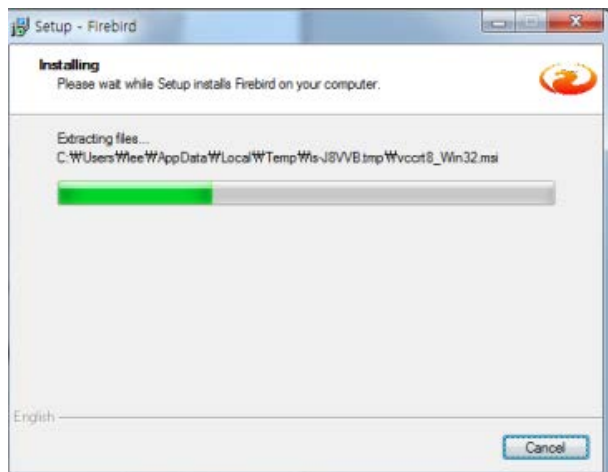


⑤ Check the information and click on the "Install"

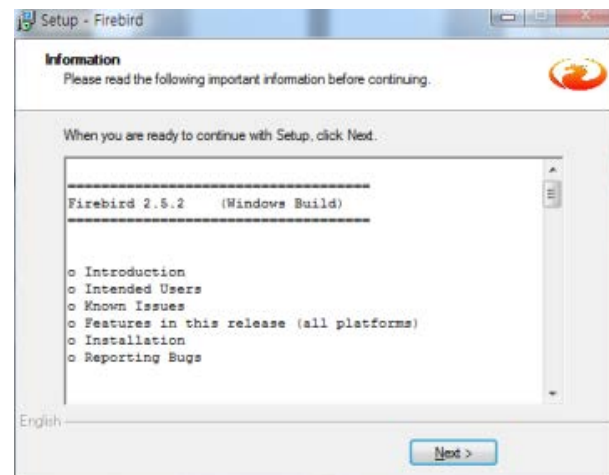


INSTALLATION OF Guest Tag, Gateway S/W

⑥ You can see the Installing situation.



⑦ click on the "Next"



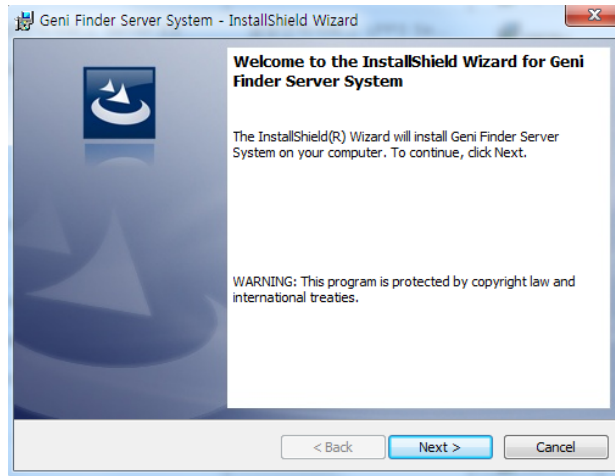
⑧ Close the window after the finish installation.



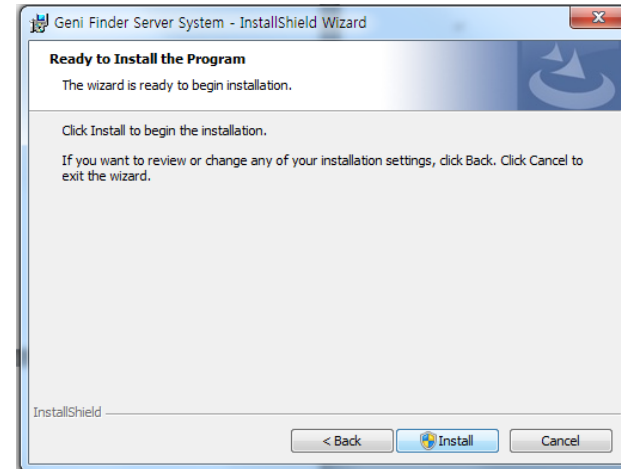
INSTALLATION OF Guest Tag, Gateway S/W

Install Server S/W

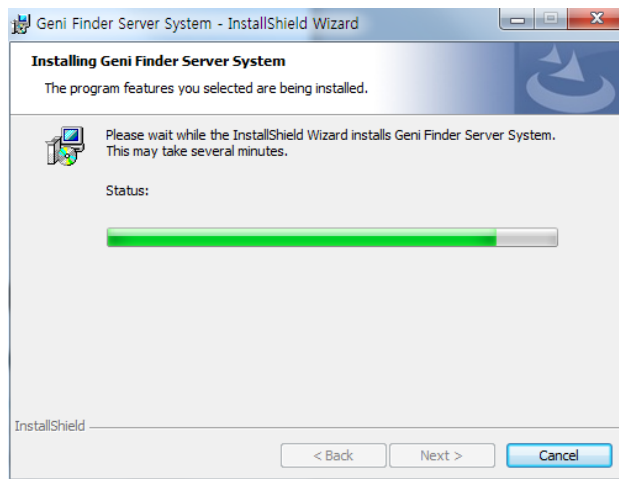
① Running the Geni Finder Server setup file.



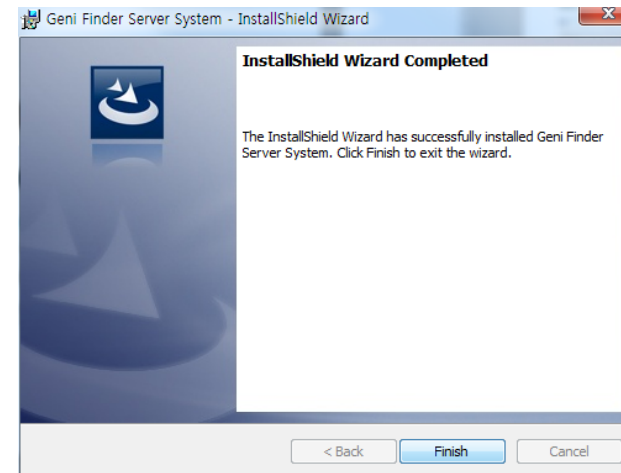
② Click the "Install" to begin the installation.



③ You can see the Installing situation.



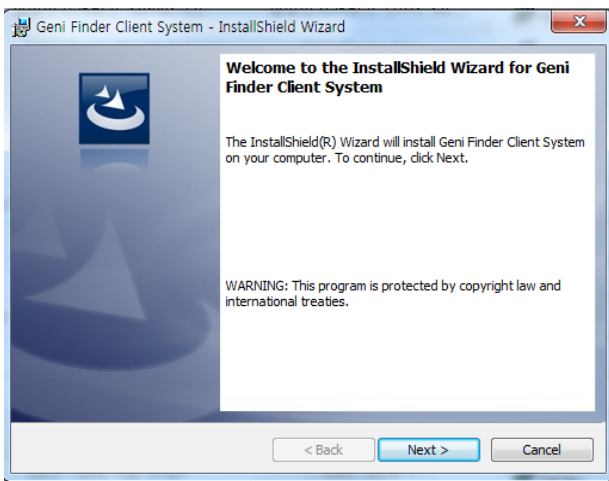
④ Close the window after the finish installation.



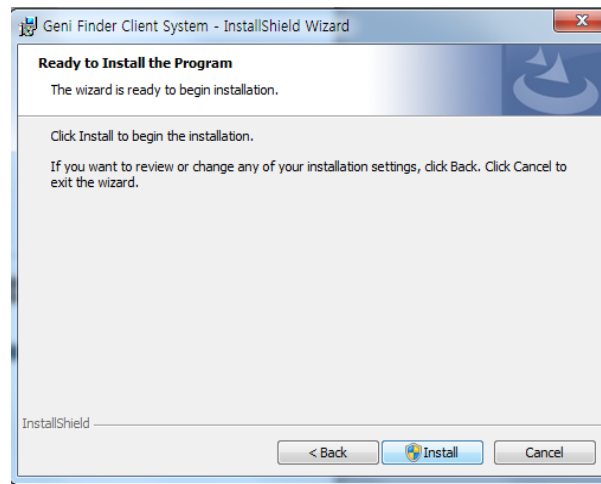
● INSTALLATION OF Guest Tag, Gateway S/W

Install Client S/W

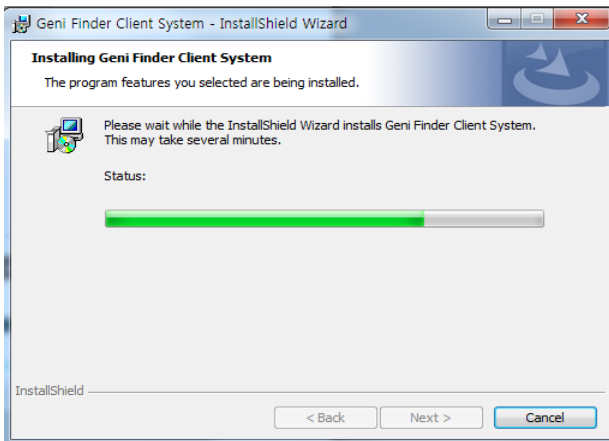
① Running the Geni Finder Client setup file.



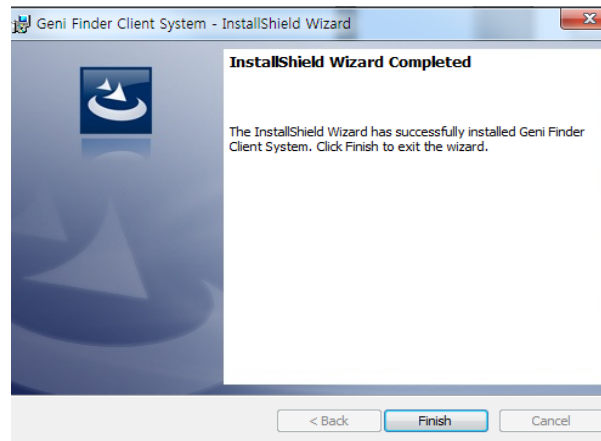
② Click the "Install" to begin the installation.



③ You can see the Installing situation.



④ Close the window after the finish installation.

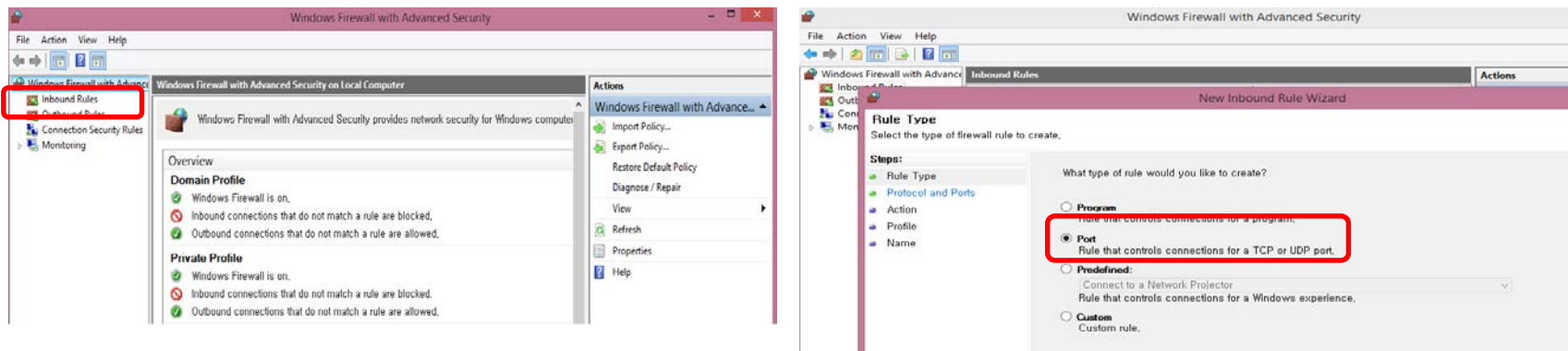


INSTALLATION OF Guest Tag, Gateway S/W

Window 7

Control Panel → System and Security → Windows Firewall → Advanced Setting → “Click “Inbound Rules” → Click “New Rule”

① After clicking “New Rule”, select “Port” and Click “Next” button.



② Select “TCP” and input “3050” in the box of “Specific Local ports”. Then, press “NEXT” button.

Protocol and Ports

Specify the protocols and ports to which this rule applies.

Steps:

- Rule Type
- Protocol and Ports
- Action
- Profile
- Name

Does this rule apply to TCP or UDP?

TCP
 UDP

Does this rule apply to all local ports or specific local ports?

All local ports
 Specific local ports:
Example: 80, 443, 5000-5010

< Back Next >

INSTALLATION OF Guest Tag, Gateway S/W

③ Select "Allow the connection" and click "Next" button.

What action should be taken when a connection matches the specified conditions?

Allow the connection
This includes connections that are protected with IPsec as well as those are not.

Allow the connection if it is secure
This includes only connections that have been authenticated by using IPsec. Connections will be secured using the settings in IPsec properties and rules in the Connection Security Rule node.

Block the connection

< Back

④ Select check in box of Domain, Private and Public. Then, click :Next" button..

When does this rule apply?

Domain
Applies when a computer is connected to its corporate domain.

Private
Applies when a computer is connected to a private network location, such as a home or work place.

Public
Applies when a computer is connected to a public network location.

< Back

⑤ Input "GENI" in box of Name and GENI FINDER S/W in box of Description. Then, click "Finish".

Name:

Description (optional):

< Back

⑥ You can find out "GENI".

Inbound Rules				
Name	Group	Profile	Enabled	Acti
<input checked="" type="checkbox"/> GENI		All	Yes	Allo
<input checked="" type="checkbox"/> Apache HTTP Server		Private	Yes	Allo
<input type="checkbox"/> Apache HTTP Server		Public	No	Allo
<input checked="" type="checkbox"/> Apache HTTP Server		Private	Yes	Allo
<input type="checkbox"/> Apache HTTP Server		Public	No	Allo
<input type="checkbox"/> Dungeon & Fighter		Private	Yes	Bloc
<input type="checkbox"/> Dungeon & Fighter		Private	Yes	Bloc
<input checked="" type="checkbox"/> Geni.Finder Server.		Private	Yes	Allo
<input checked="" type="checkbox"/> Geni.Finder Server.		Private	Yes	Allo
<input checked="" type="checkbox"/> Geni.Finder Server.		Public	Yes	Allo
<input checked="" type="checkbox"/> Geni.Finder Server.		Public	Yes	Allo
<input checked="" type="checkbox"/> GomBridge		Private	Yes	Allo
<input checked="" type="checkbox"/> GomBridge		Private	Yes	Allo
<input checked="" type="checkbox"/> GomBridgeMobileServer		Private	Yes	Allo
<input checked="" type="checkbox"/> GomBridgeMobileServer		Private	Yes	Allo
<input checked="" type="checkbox"/> GomBridgeTray		Private	Yes	Allo
<input checked="" type="checkbox"/> GomBridgeTray		Private	Yes	Allo

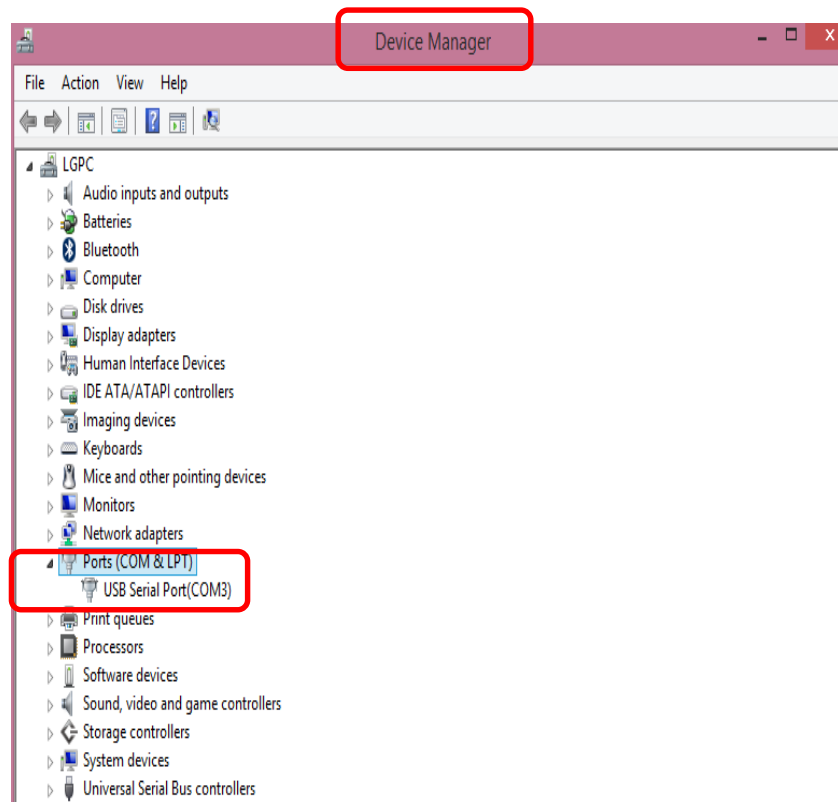
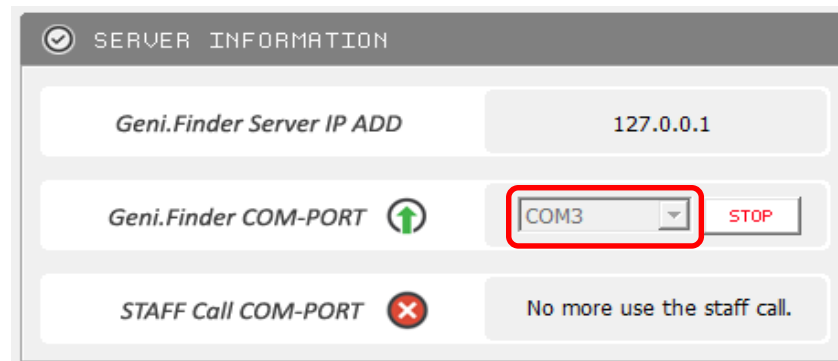
● Guest Tag, Gateway OPERATION

Guest Tag, Gateway Server Operation

① Run GTAG, GWAY Server and set GTAG, GWAY COM-PORT. You can find out the COM-PORT by entering Device Manager of Control Panel.

Port Number of "USB Serial Port" at the port section of Device manager should be selected identically on Server S/W and click "START" button.

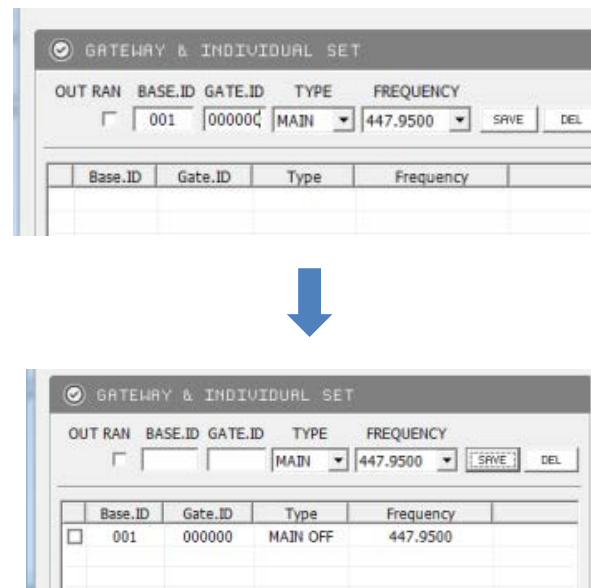
If the COM-PORT number is correct and connection status is O.K, Start button will be changed to "STOP" button with short sound. Then, Server S/W will be activated.



● Guest Tag, Gateway OPERATION

② Input Base ID (3 digits) and GWAY ID (000000) in the section of "GATEWAY & INDIVIDUAL SET". (You can check Base ID through label which is attached on bottom of Gateway.)

Select "MAIN" in the section of TYPE and check the frequency on bottom of Gateway. Select checked frequency and click "SAVE" button. (Pre-set information of Gateway should be matched with information you set in the section of Gateway & Individual Set.)



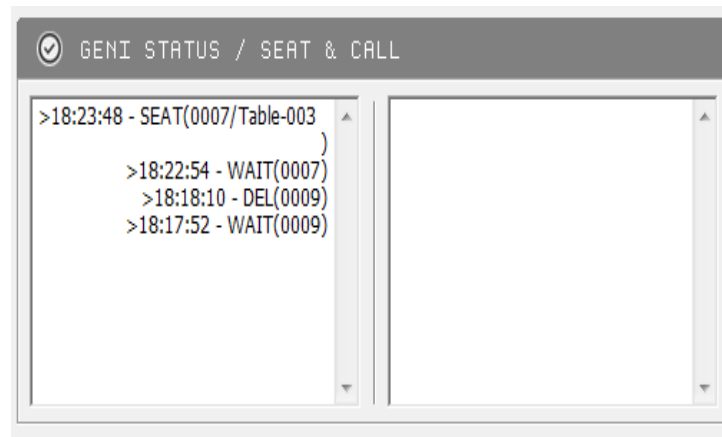
How to add additional frequencies

- ① C Drive (C:) → Program Files folder → LEETEK folder → Geni SERVER folder
Open "**Geni.Finder.frequency**" file in Geni Server folder.
- ② Input additional frequencies and save the file as a different name on Desktop.
- ③ Move the file to Geni Server file and cover the file from original file.
Then, you can find out the additional frequencies in the file and frequency section of Server S/W.

● Guest Tag, Gateway OPERATION

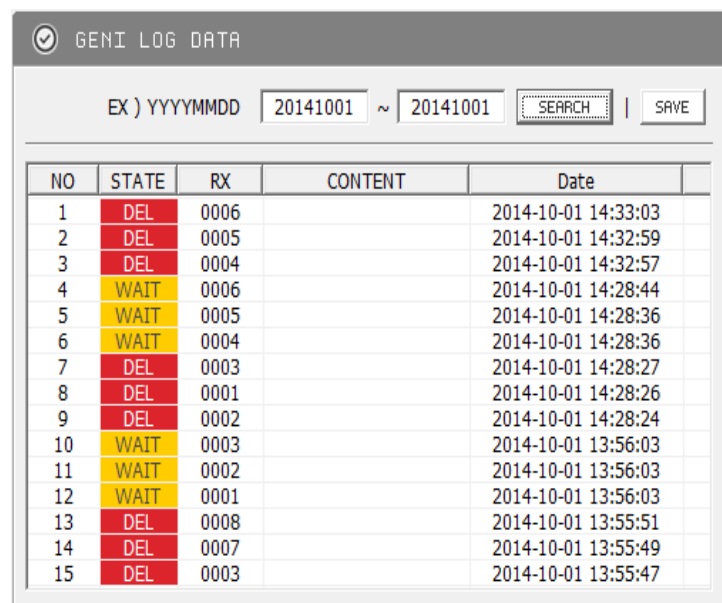
③ GENI STATUS / SEAT & CALL

- All movements between Guest Tag and Gateway are supposed to be displayed in real time.
- If customer presses the call button of Guest Tag, Alert time, the number of Guest Tag and Table information will be displayed in this section.

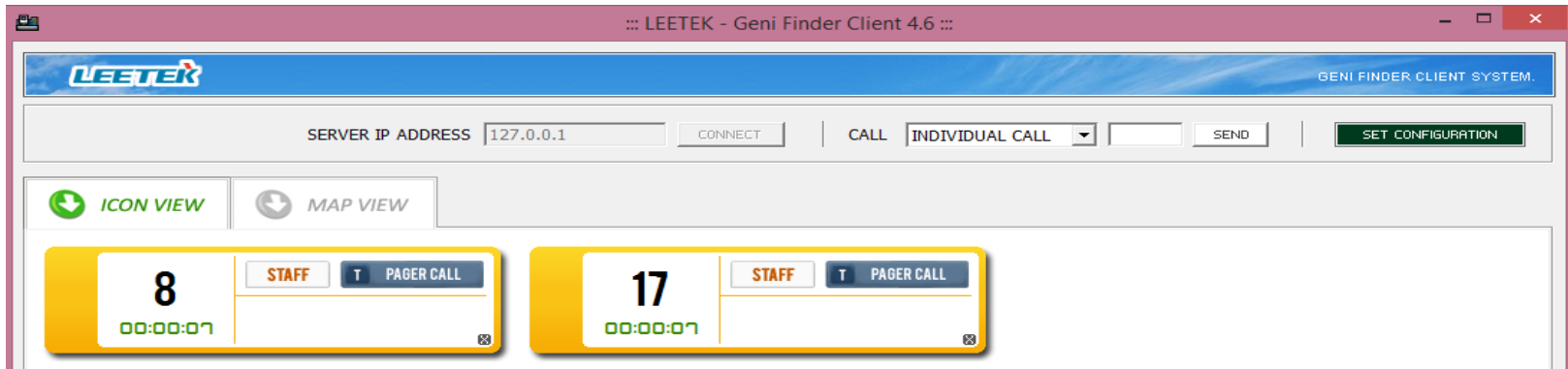


④ GENI LOG DATA

- You can search log data of Geni Finder System.
 - Input period and click Search button.
 - Log data will be displayed at the bottom of input box.



GTAG, GWAY Client Operation



Geni Finder Client S/W Screen

- ① Click shortcut icon of Client S/W.
- ② After checking IP address on Server S/W, input Server IP Address on Client S/W and click **Connect button**.
- ③ If IP address is correct and network connection between Server S/W and Client S/W is good, ICON VIEW and MAP VIEW Tab will be activated on Client S/W screen.
- ④ Staff should give a Guest Tag with receipt after customer complete order and payment.



Client S/W can be installed at same PC that Server S/W is installed or different PC.

In case Client S/W should be installed at the other PC Server S/W, install "Firebird-2.5.2.26540_0_Win32" first.

Guest Tag, Gateway OPERATION

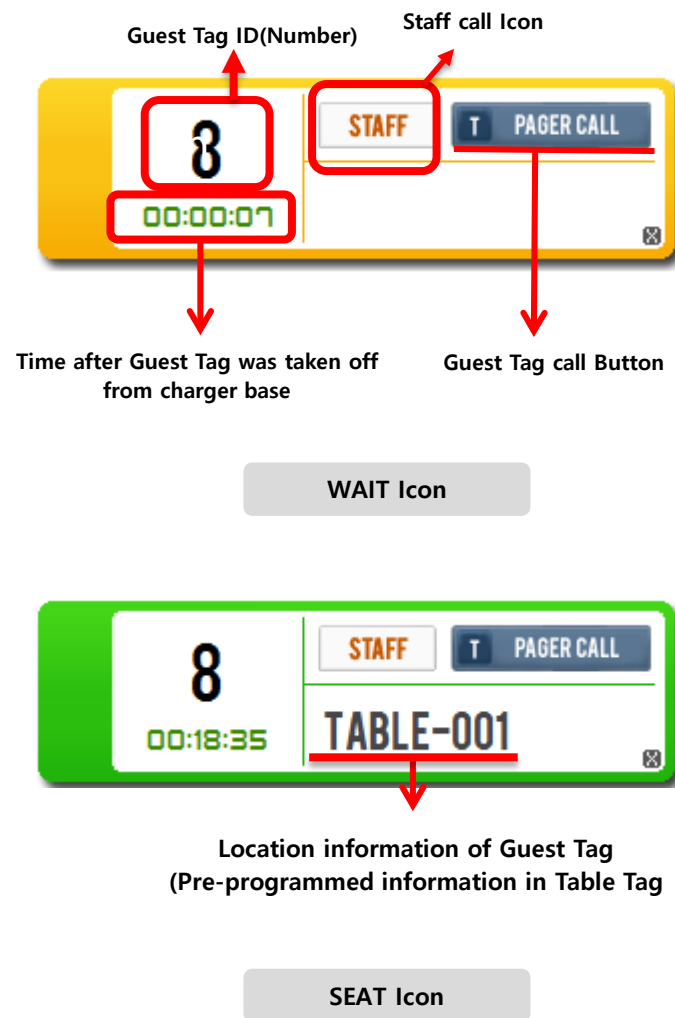
⑤ When Guest Tag is taken off from charger base, the Guest tag send "Start" signal to Gateway. The Gateway send the signal to PC and information of the relevant Guest Tag will be displayed on Client S/W as "Wait" icon of Yellow color.

⑥ Customer seats with Guest Tag and put the Guest Tag on Table Tag which is attached on table. As soon as Guest Tag detects the Table tag, it is supposed to flash twice with beep.

⑦ Guest Tag send location information which is set in advance to Gateway. Gateway receives the information and sends it to PC. Wait Icon will be changed to "Seat" of Green color on Client S/W.

※ Staff-call Icon

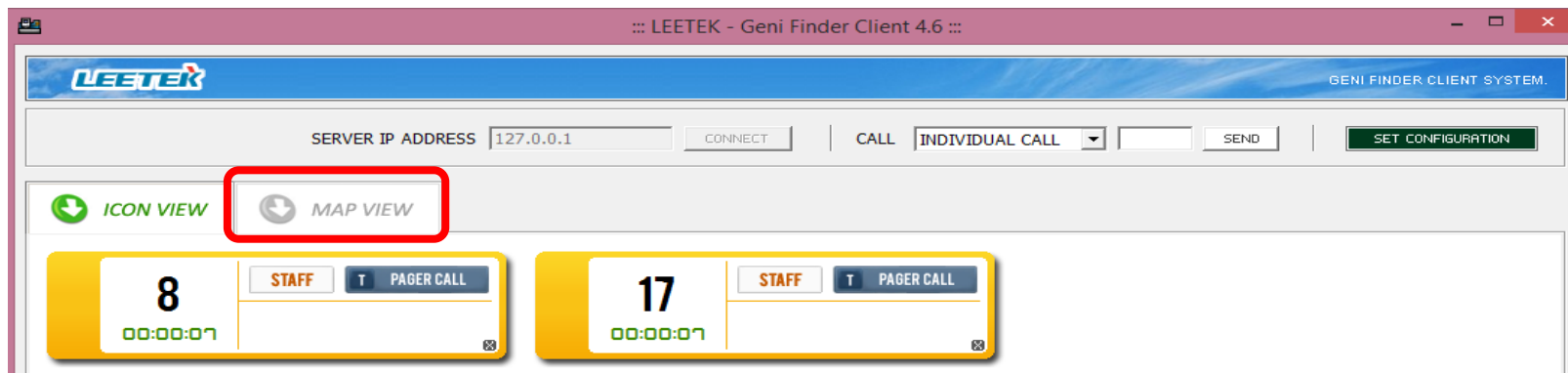
The background color of Staff call icon will be changed to red and blinking when paged



● Guest Tag, Gateway OPERATION

- ⑨ When order foods are ready to serve, Staff checks location of relevant customer through Client S/W and serves the foods to customer. At the same time, Staff collects Guest Tag of relevant customer.
- ⑩ When Guest Tag is put on charger base, Gateway send "Clear" signal to Gateway.
- ⑪ Gateway receive the signal and send it to PC. "SEAT" Icon of Green color is going to be disappeared on screen of Client S/W.

Guest Tag, Gateway OPERATION



Geni Finder Client S/W Screen

► To page Guest Tag

- Guest Tag can be paged if need.

PAGING functions	Description
GROUP CALL	All of Guest Tags can be paged at once Please select "GROUP CALL" and then click "SEND" at CALL section in red colored box
INDIVIDUAL CALL	A specific Guest Tag can be paged individually Please select "INDIVIDUAL CALL" and then enter a specific Guest Tag number and click "SEND" button.
GROUP SLEEP	All of Guest Tags can be off at once Please select "GROUP SLEEP" and then click "SEND"
INDIVIDUAL SLEEP	A specific Guest Tag can be off individually Please select "INDIVIDUAL SLEEP" and enter a specific Guest Tag number and then Click "SEND"

Guest Tag, Gateway OPERATION

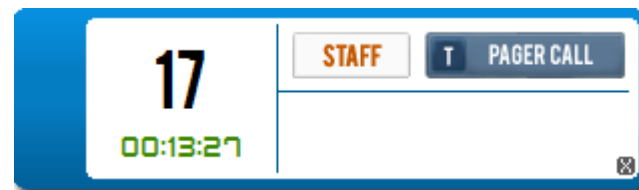
▶ SET CONFIGURATION

- Options to page Guest Tags and the icon color of Client software can be changeable
- Click "SET CONFIGURATION" button at right upper of Client Software.
- PAGER ALERT: alert type and alert time can be programmable individually
- SET COLOR: Color duration time can be programmable at each color icon, Blue and Red
- Icon View Sort type : Pager number (ASC, DESC), Waiting Time (ASC, DESC)

The screenshot shows the "SET CONFIG" window with the following settings:

- PAGER ALERT:** VIBE (8 Sec), FLASH (8 Sec), BEEP (OFF)
- SET COLOR:** WAIT (yellow), SEAT (green), BLUE (20), RED (15)
- Pager Section:** Setting the interval of PAGER to be displayed on the screen. Set time: 99
- Food Corner Set:** Foodcourt Only : 01 ~ 99 (2 Digit) or Not Enter.
- ICON View Sort:** ICON View Sort Type: Pager Num(ASC)

Buttons: SAVE, CLOSE



In case pre-programmed time is over in BLUE



In case pre-programmed time is over in RED

▶ SET CONFIGURATION

- Options to page Guest Tags and the icon color of Client software can be changeable
- Click "SET CONFIGURATION" button at right upper of Client Software.
- PAGER ALERT: alert type and alert time can be programmable individually
- SET COLOR: Color duration time can be programmable at each color icon, Blue and Red
- Icon View Sort type : Pager number (ASC, DESC), Waiting Time (ASC, DESC)
- Pager Section : Setting the interval of pager to be displayed on screen.

... SET CONFIG ...

PAGER ALERT

VIBE 8 Sec

FLASH 8 Sec

BEEP OFF

SET COLOR

WAIT SEAT BLUE 20 RED 15

Pager Section

Setting the interval of PAGER to be displayed on the screen 1 - 9999

Food Corner Set

Foodcourt Only : 01 ~ 99 (2 Digit) or Not Enter.

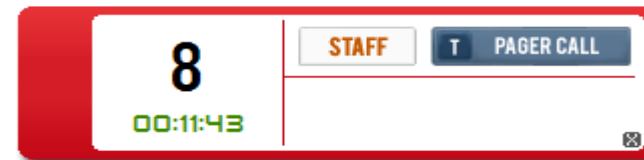
ICON View Sort

ICON View Sort Type Pager Num(ASC)

SAVE CLOSE



In case pre-programmed time is over in BLUE



In case pre-programmed time is over in RED



In Case customer want to take foods away
(Guest Tags for TO-GO service can be
programmed by pre-set NFC Card.)

● Guest Tag, Gateway OPERATION

▶ MAP VIEW

- It is to display the location of Table and also Guest Tag in the store
- Map view can be developed according to the map of store provided.
- The extra cost is charged for the development of map and also extra time is required

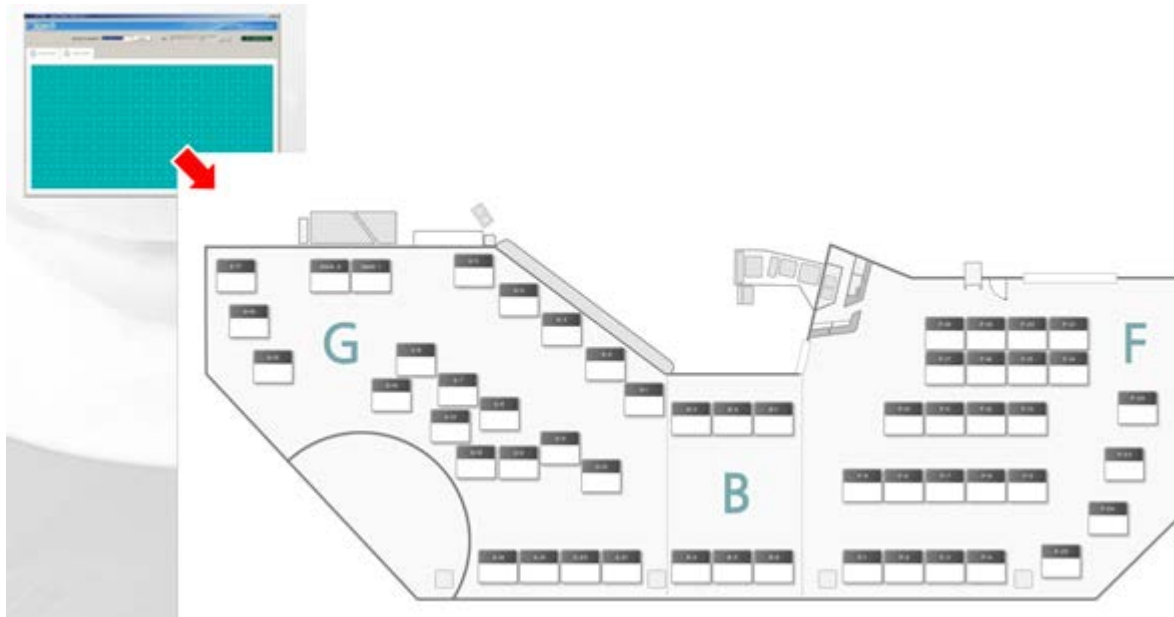


Table Tag Writer INSTALLATION AND OPERATION

INSTALLATION

1. Connect to PC



Mini USB to
USB cable



Table Tag Writer
Mini USB port

- ① Connect Table Tag Writer to PC by the mini USB to USB cable.
Mini USB side is connected to Table Tag Writer and USB side to PC



Please do not place Table Tag Writer on the table made by metallic material
(The metallic material can affect to the operation of Table Tag Wirer)

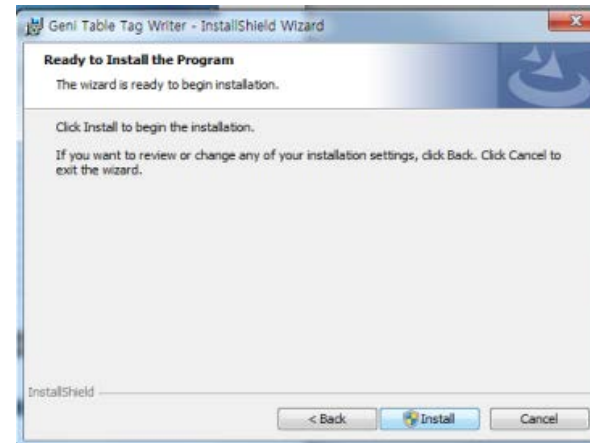
Table Tag Writer INSTALLATION AND OPERATION

2. Installation of Table Tag Writer software

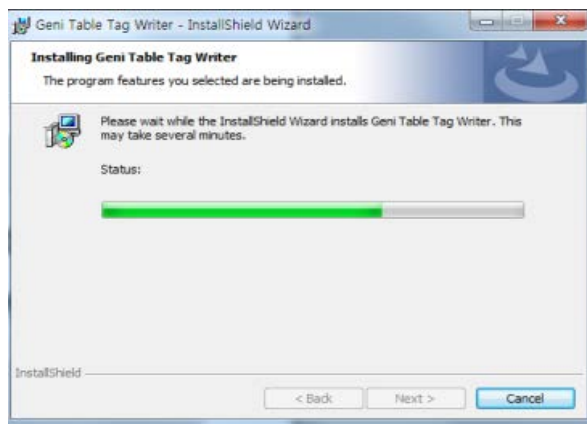
① Operate Geni Table Tag Writer software file



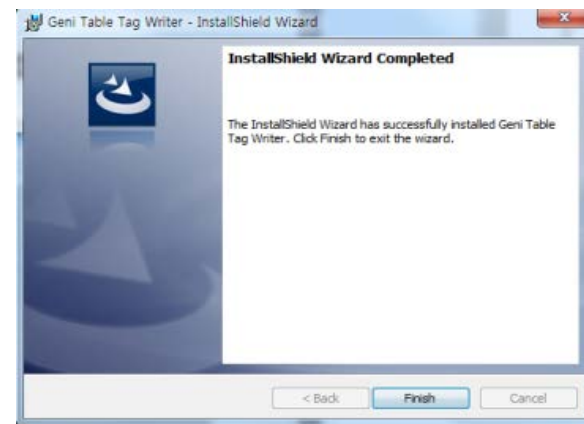
② Click "Install" button to start installation



③ The progress of installation is displaying as below



④ Click "Finish" button when installation is completed



TAG WRITING

1. Read Table Tag

① Check out new COM port number for Table Tag Writer at Device manager and select COM port number and then click "OPEN" button (Refer to 4.6 Geni Finder Server Operation - ①). Input blank is changed to be enterable with a short chirp sound if COM port number is selected correctly and the cable is well connected between Table Tag Writer and PC.

② Click "TAG READ" button after put Table Tag on the Table Tag Writer.

③ The Table Tag information is displayed if read Table Tag successfully. (NOTE. Table Tag reading process shall be taken before programming new information.)



Table Tag Writer Screen

Table Tag Writer INSTALLATION AND OPERATION

2. Change of Table Tag information

① HOMEPAGE and TABLE INFO are programmable by Table Tag Writer as to the screen.

- HOMEPAGE: Goes to the pre-programmed website automatically if a smart phone is closed to Table Tag(NFC option shall be ON in smart phone)
- TABLE INFO: Pre-programming Table Tag information is displayed on Client software when Guest Tag is put on the Table Tag (for example, TABLE-001). Max. 12 digits in text and number can be programmable.

② Click "TAG WRITE" after entering the information.

③ The below two pop-up windows are displayed in sequence if Table Tag writing process is completed successfully.



Table Tag reading screen



SPECIFICATION

Guest Tag	SPEFICATION
Frequency Band	450.3250 ~ 469.9875 MHz, 13.56 MHz
Channel & Filter	PLL Type
Modulation scheme	GFSK(UHF), ASK(NFC)
Sensitivity	-95dBm
Frequency stability	+/- 2.5ppm
Occupied Bandwidth	8.25KHz
Battery	STD : Li-ion 3.7V / 650mAh
Key	1-Button
Charging Time	STD Battery : 5 hours (@ 4.2V)
Standby Time	14 Hour

SPECIFICATION

Gateway	SPEFICATION
Frequency Band	450.3250 ~ 469.9875 MHz
Channel & Filter	PLL Type
Modulation scheme	GFSK
Sensitivity	-105dBm
Frequency stability	+/- 2ppm
Occupied Bandwidth	8.25KHz
Power	SMPS 12V, 5A

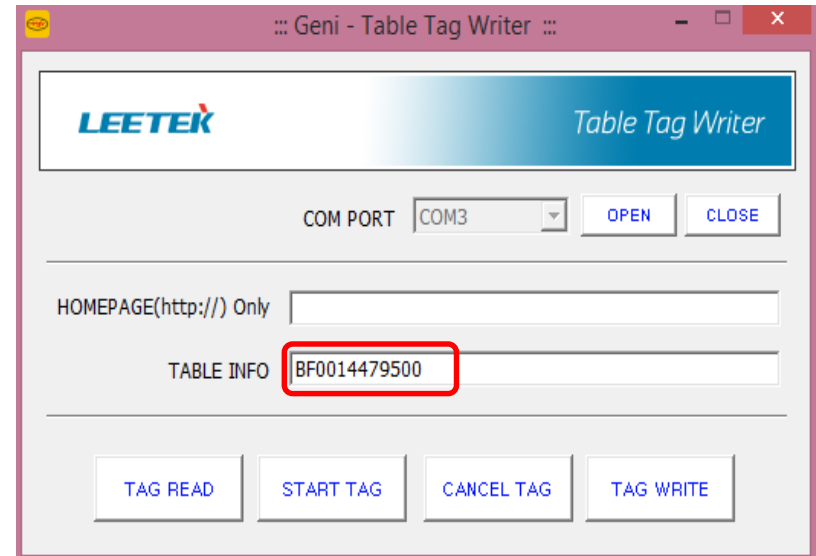
How to change BID, Freq. and Pager number

1. How to change BID & Freq.

- ① Run Table Tag writer
- ② Input Base ID and Frequency in Table Info section such as below.

BF0014479500

- ③ Prepare Tag Writer and put Table Tag on Tag Writer.
- ④ Click "Tag Write" button.
- ⑤ Put Guest Tags to be changed frequency and Base ID on pre-programmed NFC Tag.
- ⑥ Frequency and Base ID of Guest Tag shall be changed with short sound and flash.

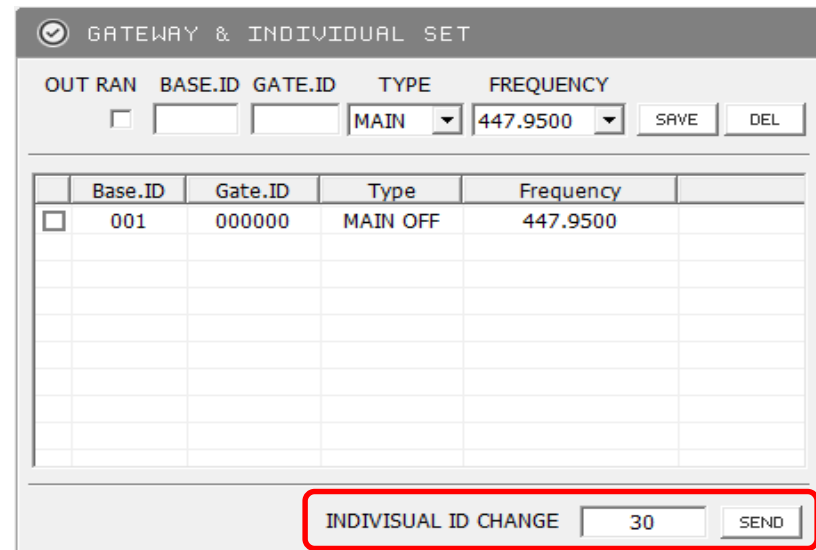


2. How to change Pager Number

- ① Open Server S/W
- ② Press Ctrl + ↑
- ③ Individual ID Change section shall be activated and input pager number to be changed.
- ④ Click SEND button

※ Notice

- All guest Tags should be put on the charger base in order to be changed.
- All procedures should be completed within 1 minute.
- Otherwise, pager number will not be changed.



PROBLEM SOLUTION

Q. I can not see Guest Tag icon on Geni finder Client screen when Guest tag is taken out of charger

Please check out the connection status of power line and USB cable on Gateway

Q. I can not connect Internet on PC when more than one Gateway are connected to PC

Please plug the LAN cable, which was originally connected to the PC, into the switching LAN hub

Q. Guest Tag is not charged properly

Please cleaning the charging pins of Guest Tag because there might be some dusty or foreign substance

Q. "Err" is displayed on Guest Tag

1. It seems to be some communication error between Gateway and Guest Tag

- it may be too far away to be able to communicate each other between Gateway and Guest Tag or Gateway and

Repeater. Please locate them closer each other

- **Please check out the connection status of Gateway**
- **The communication may not be made properly if there are some metallic materials around Gateway.**

Please relocate Gateway away from the metallic materials

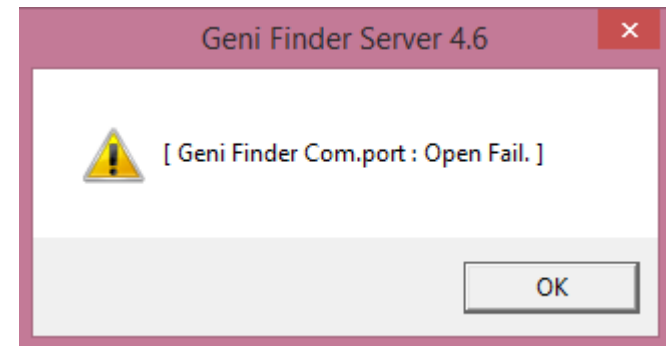
2. Please check out the frequency on Gateway and Geni finder server software.

The frequency may not the same between Gateway and Geni Finder Server.

Q. COM-PORT connection error

The following error message is shown up if COM-PORT connection is not made correctly when setup COM-POR. Please check out the below points

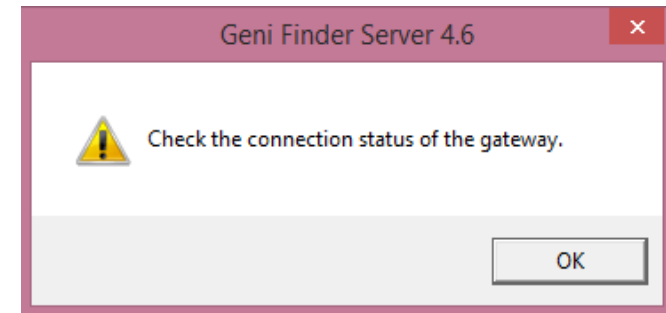
1. Electrical power connection on Gateway
2. COMPORT number on the cable to Gateway
3. Status of Cable connection



Q. Gateway connection error in case that more than one Gateway are connected

The following error message can be shown up when "Geni Finder Server" is operated and then try to save "GATEWAY & INDIVIDUAL SET". Please check out the below points

1. Electrical power connection on Gateway
2. Connection status on LAN cable connected to Switching LAN hub
3. IP address entered at "Config Tool"



Q. Tray Icon Error

Geni-Finder Software shall be turned off at the tray Icon if the following error message is shown up because the software is still under operation even though we click exit icon, "X".

