

User Manual

Attentions



General Note

- JL-V2 should be charged for about 2 hours before first-use. Please charge it when in low battery. JL-V2 can keep normal operation continuously for about 7 hours, and with the stand-by time of about 150 hours (The charger indicator is red while charging and it turns green after full charged.).
- 8 Teacher's JL-V2 or Student's JL-V2 can be charged simultaneously by using 8-port charger.
- Power Supply: 3.6V, 3 Ni-MH batteries (AAA 1.5V batteries are also available).



General Note

- IPBOARD Vote Edition V2.0 is required to be installed before operation. Ensure that V4.0 driver is well connected.
- The network ID of transceiver is supposed to be compatible with that said on the label stuck on the back of JL-V2, or the driver may fail in connection.
- JL-V2 includes 7 models as follows: JL-V2 (08/16/24/32/64/128/256). The transceiver available for JL-V2 (64) is different from that for JL-V2 (128) and JL-V2 (256), and they are not allowed to be used interchangeably.



General Note

- JL-V2 defaults to auto-sleep mode. It will access to sleep mode and the backlight of LCD screen will be off automatically without any operation in 9 minutes.
- Users can press **Menu** to wake up JL-V2. Besides, users can select whether access to sleep mode manually in connectivity status with **Menu**.

Content

Attentions	1
Content	2
I Brief Introduction	3
II Unpacking JL-V2 Suite	4
1 JL-V2.....	4
2 Standard Accessories	5
III Installation of IPBOARD Vote Edition V2.0	7
IV Run the Software	14
1 Start IPBOARD Vote Edition Driver.....	14
2 Start IPBOARD Vote Edition	14
3 Start voting system.....	14
V Features of JL-V2 in-class Response System	16
1 Set Questions	16
2 Question Management	17
3 Combined with JL-V2 response system to answer questions interactively	18
4 Statistics	19
VI Performance Specifications	20

I Brief Introduction

The in-class response system is very suitable for classroom training, creating a teaching system integrated with in-class assessment, feedback and interaction. The response system consists of IPBOARD Vote Edition V2.0 software, Teacher's JL-V2 [JL-V2 (T)], Student's JL-V2 [JL-V2 (S)] and transceiver [JL-V2 (I)]. With JL-V2, students can answer questions instantly and teachers can gain instant feedback visually. It is designed for modern interactive teaching, aiming at enabling teachers and students to be more engaged and interactive in class as well as enhancing teaching methodology. The interactive effect is shown as Figure 1:

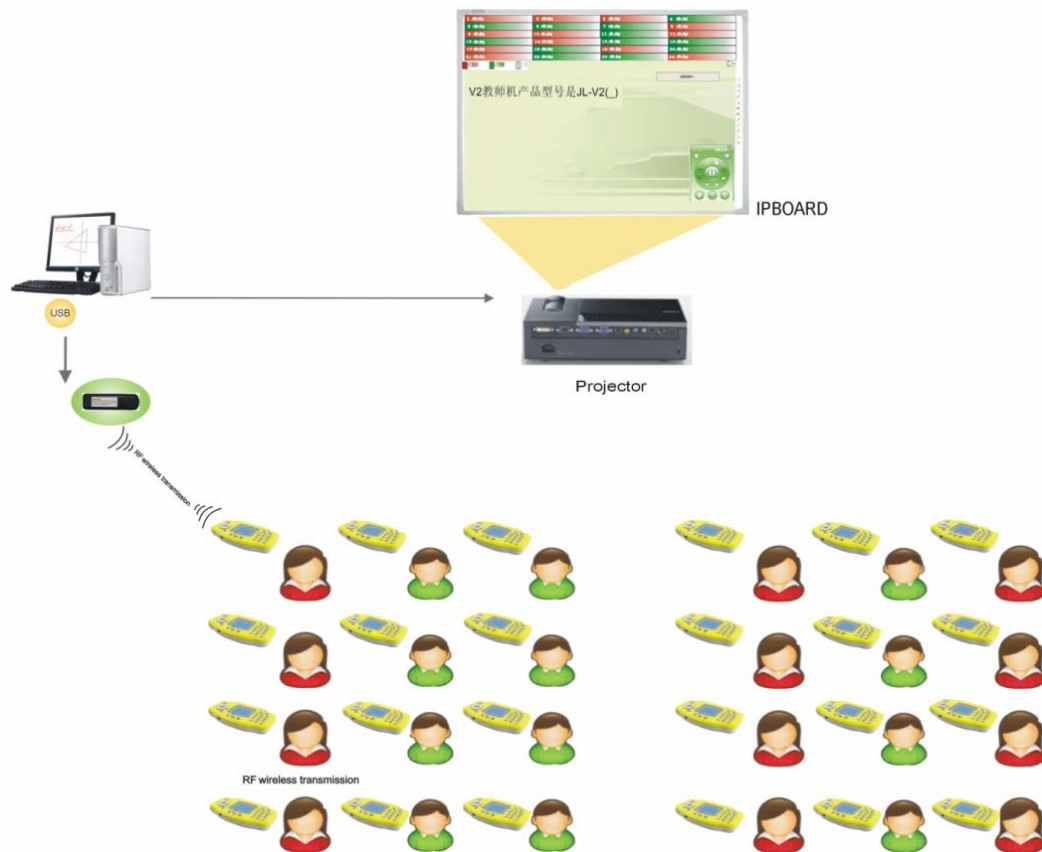
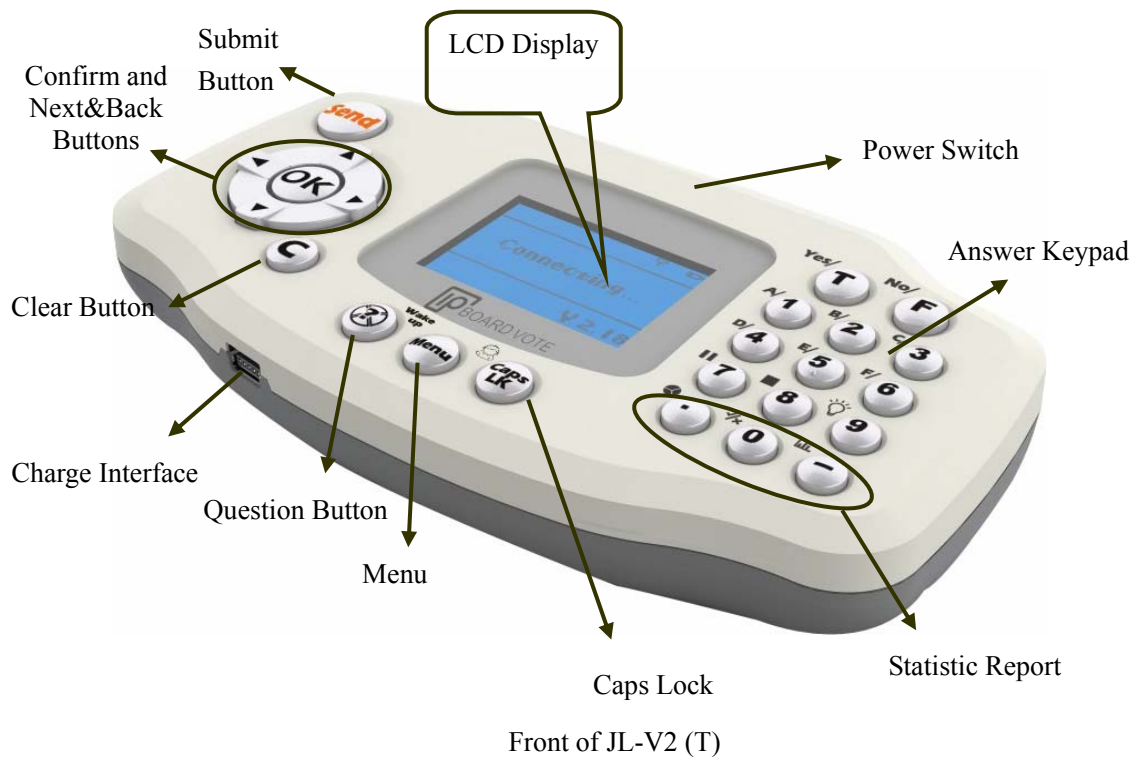


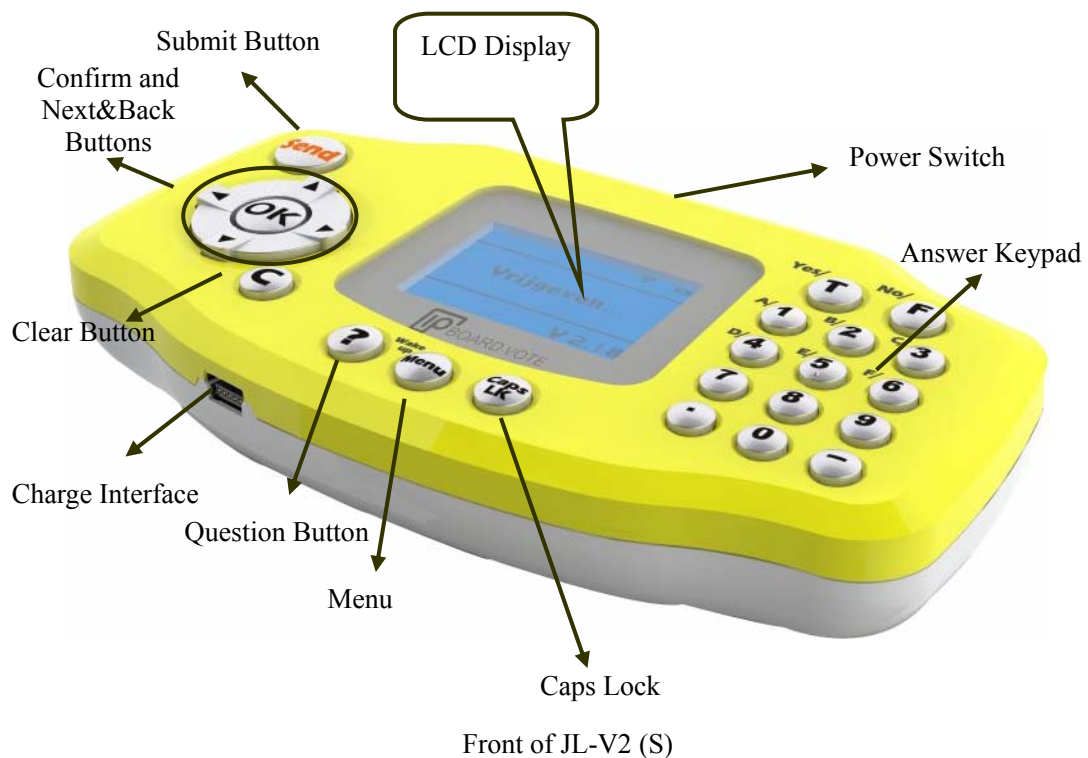
Figure 1

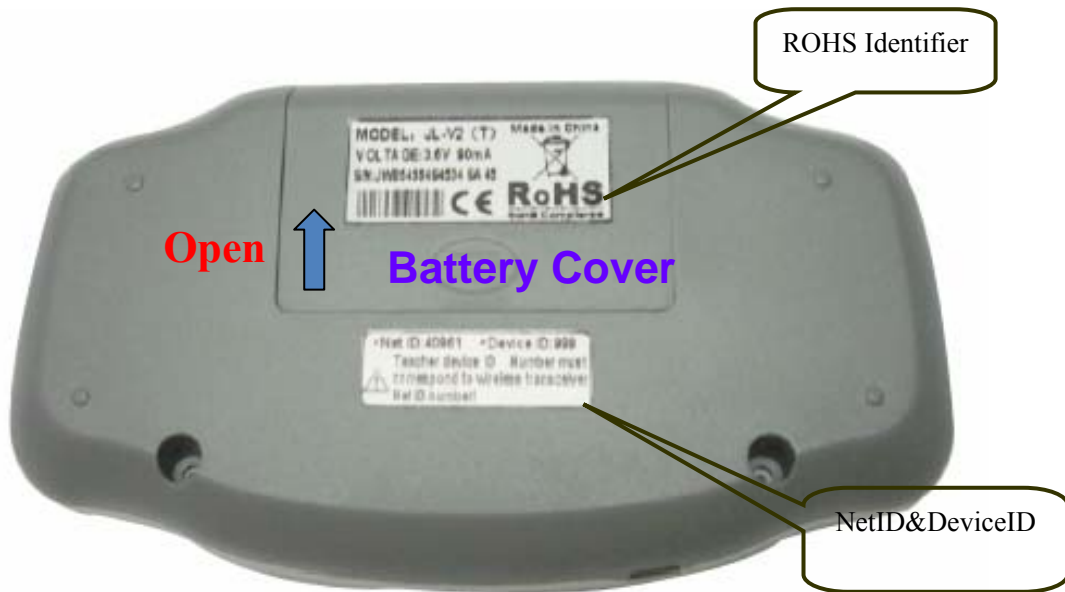
II Unpacking JL-V2 Suite

1 JL-V2



- Users can select whether access to sleep mode using the next/back keys on the **Menu**.
- Statistic Area is set on the JL-V2 (T), which enables teachers to check scores, true/false report and right answers easily; and statistic reports are displayed in the form of bar chart.








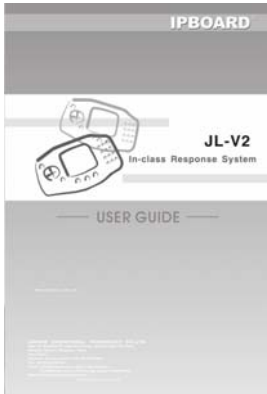

Back of JL-V2

- NetID, which is designed to build the network channel between transceiver and JL-V2, has been set ex factory. To ensure successful connection, NetID is supposed to be compatible with that said on the label stuck on the back of JL-V2.
- Device ID, which is used for identifying different terminals, is supposed to be corresponding to student's number. The device ID of JL-V2 (T) is a fixed value of 999.

2 Standard Accessories



Standard Accessories include:

Description	Quantity	Function	Figure
Transceiver (1-to-64)	1	Ensure that the computer connect with JL-V2 (8/16/24/32/64)	
Transceiver (1-to-128)/ Transceiver (1-to-256)	1	Used together with JL-V2 (128), the appearance of Student's JL-V2 (128) is the same with that of Student's JL-V2 (256). Transceiver (1-to-128) and Transceiver (1-to-256) are not allowed to be used interchangeably.	
IPBOARD Vote Edition Disc	1	JL-V2 driver and applications	
JL-V2 User Manual	1	Operation introduction	
8-port Charger	1	Charge 8 JL-V2 (T) or JL-V2 (S) simultaneously	

III Installation of IPBOARD Vote Edition V2.0

4.1 Insert IPBOARD Vote Edition disc

4.2 Click the program icon



4.3 Access to setup wizard window. As shown in Figure 2:

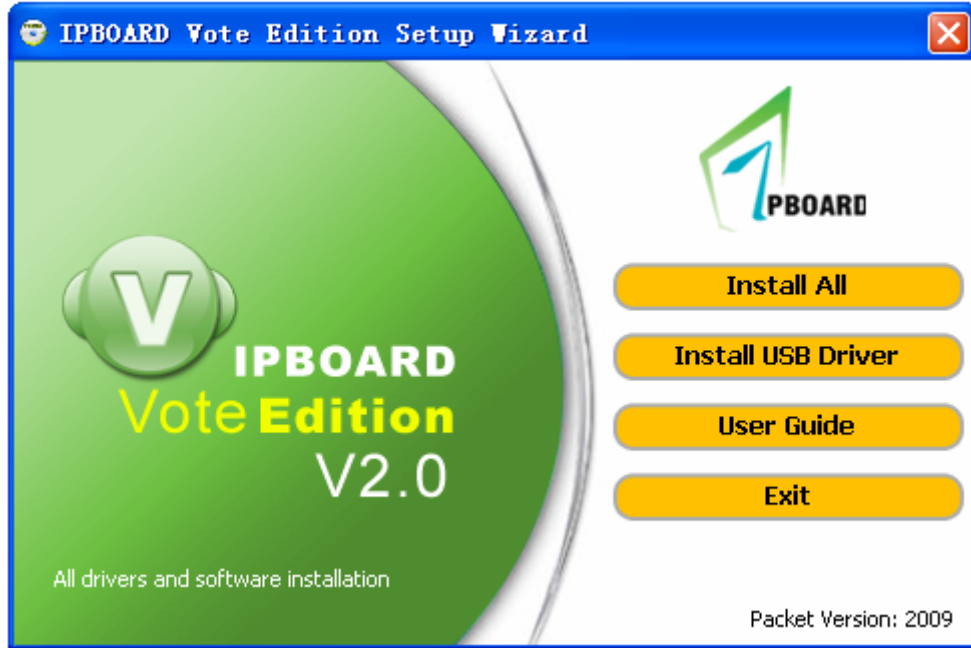



Figure 2

4.4 Click  to install IPBOARD Vote Edition and driver.

4.5 Start the installation. As shown in Figure 3:

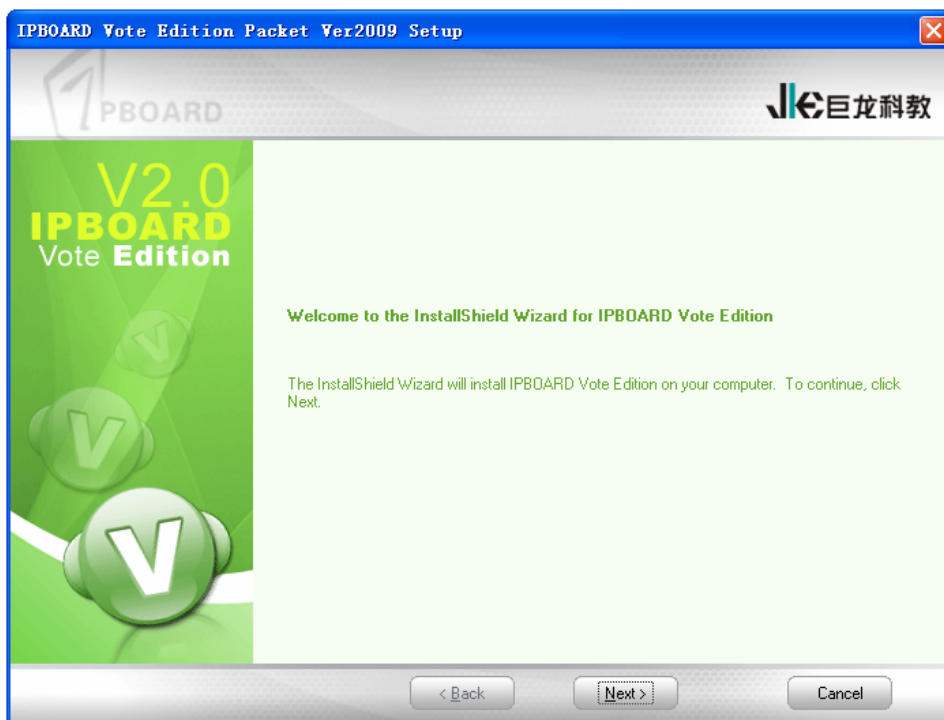


Figure 3

4.6 Select the language you want to install. As shown in Figure 4:

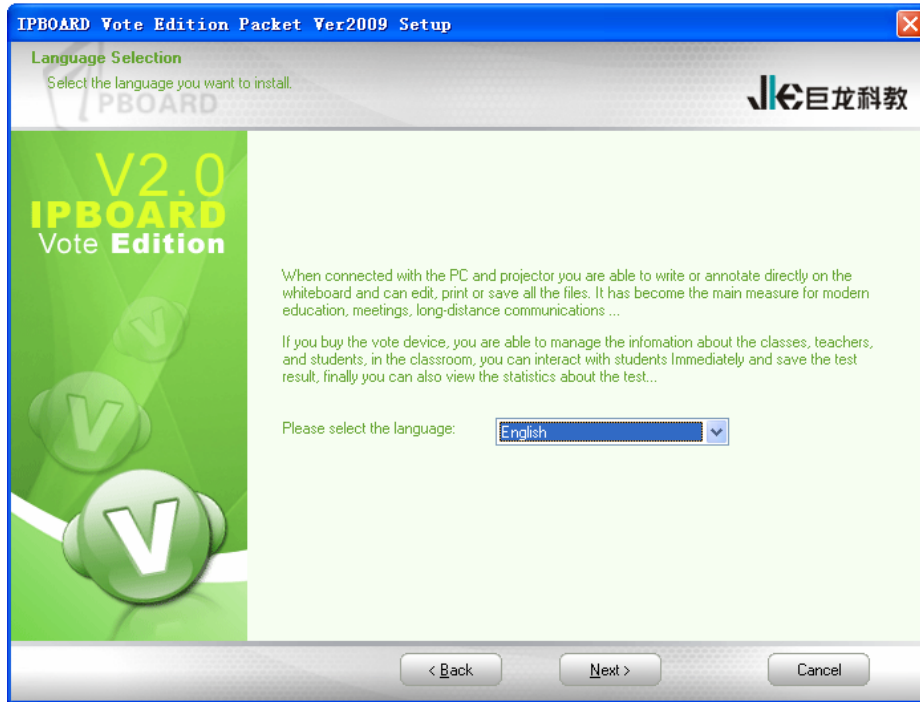


Figure 4

4.7 Choose destination location. As shown in Figure 5:

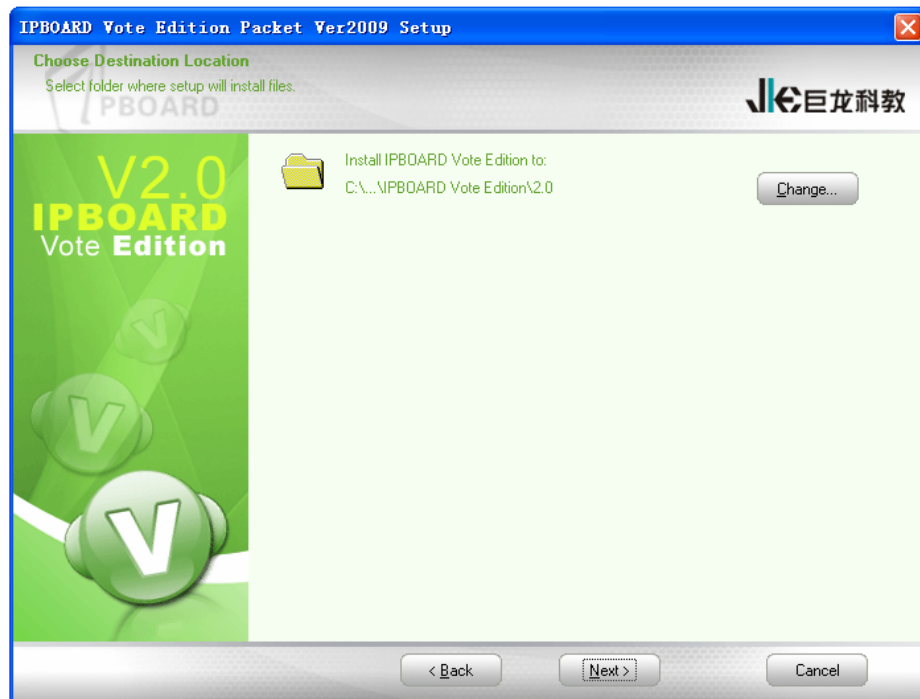


Figure 5

4.8 Select the database you want to install. As shown in Figure 6:

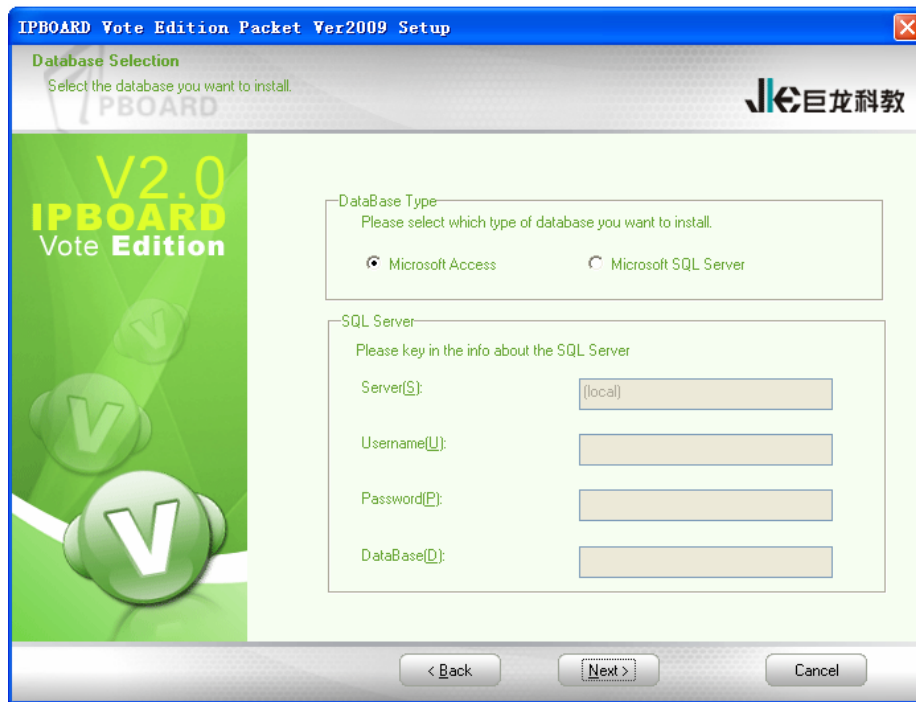


Figure 6

4.9 Select the setup type to install. As shown in Figure 7:

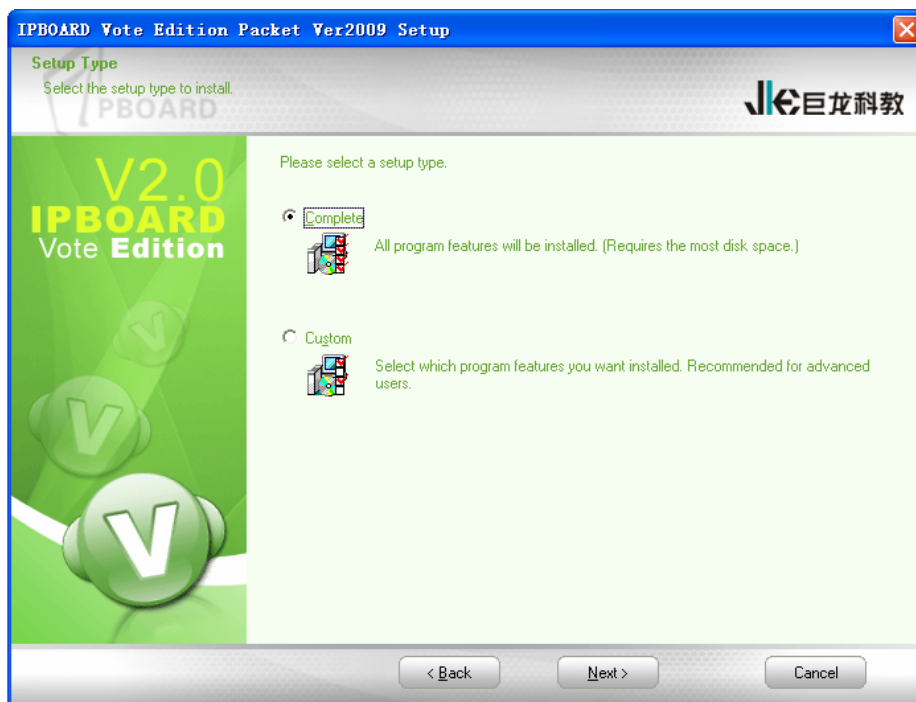


Figure 7

4.10 Complete installation. As shown in Figure 8:

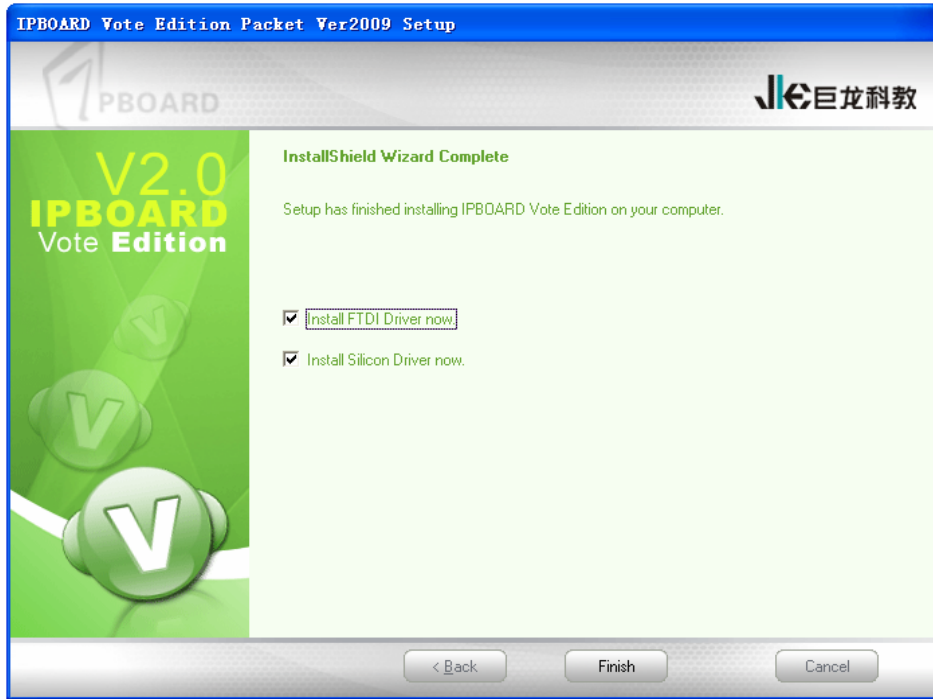


Figure 8

4.11 The USB driver installation prompt will be displayed after the software installation. FTDI USB driver will be installed by default firstly; and then the Silicon driver for IPBOARD Tablet (TB3124RDV) can be installed subsequently. As shown in Figure 9:

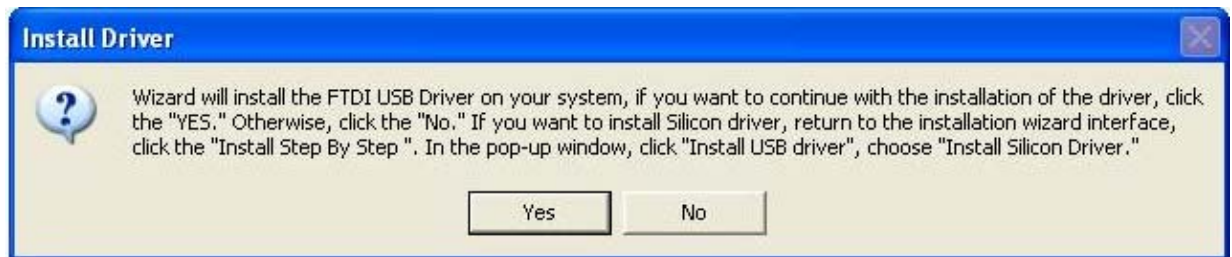


Figure 9

4.12 Complete the installation of FTDI driver. As shown in Figure 10:



Figure 10

4.13 The dialog of Silicon driver installation wizard will appear. As shown in Figure 11 and Figure 12:

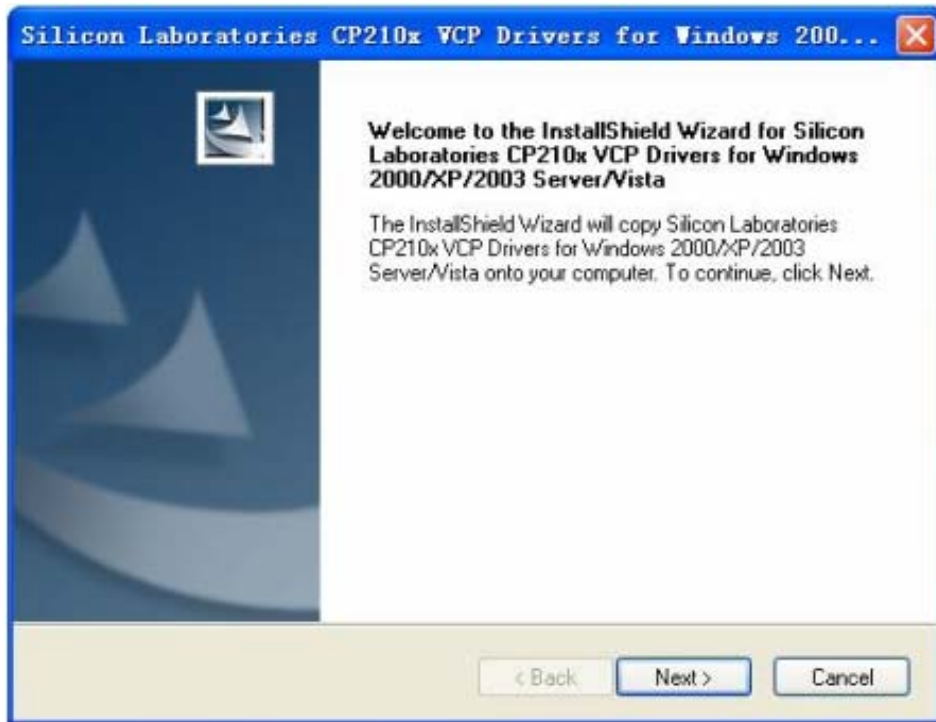


Figure 11

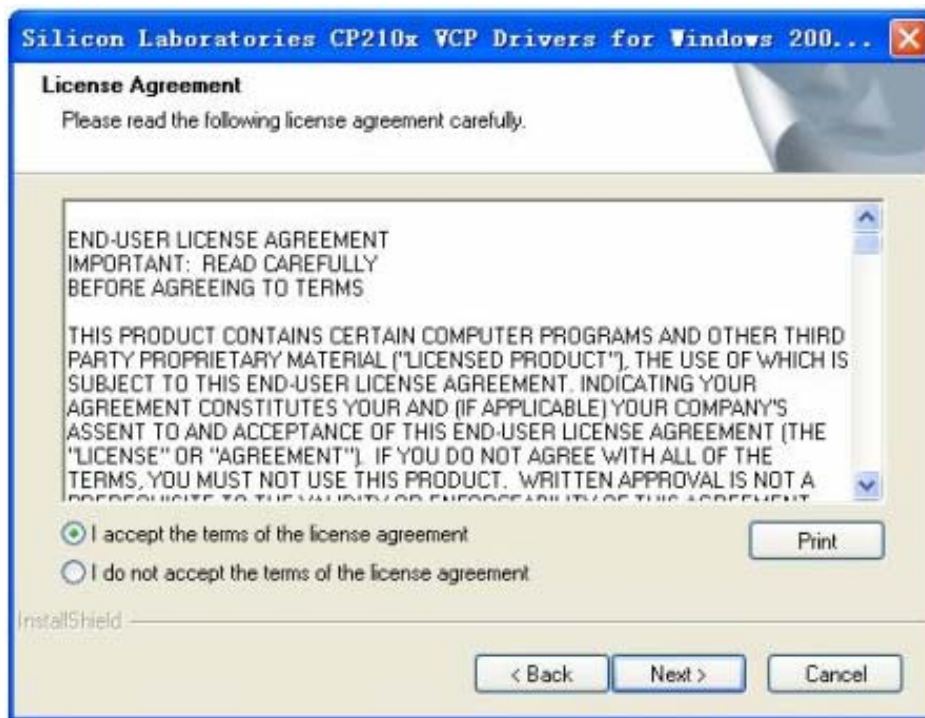


Figure 12

4.14 Choose destination location. As shown in Figure 13:

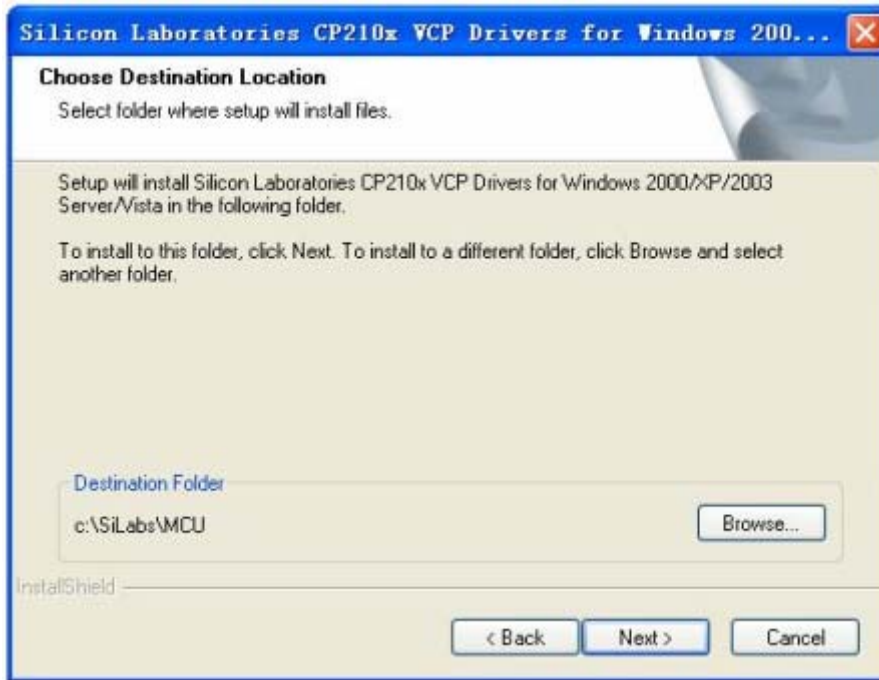


Figure 13

4.15 Start the installation. As shown in Figure 14:

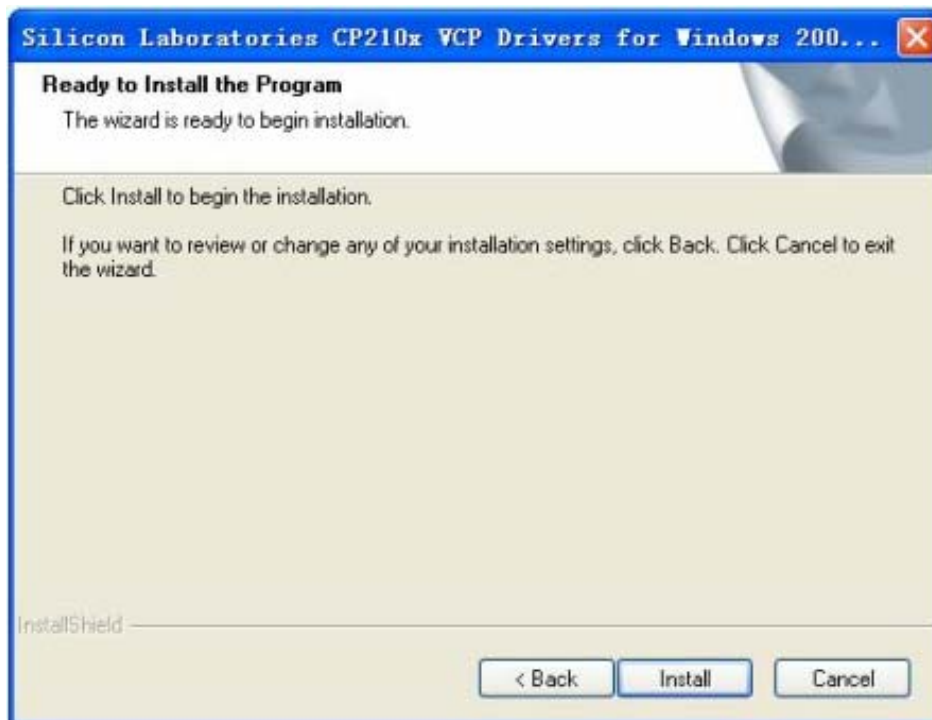


Figure 14

4.16 Complete the installation of Silicon driver. As shown in Figure 15:

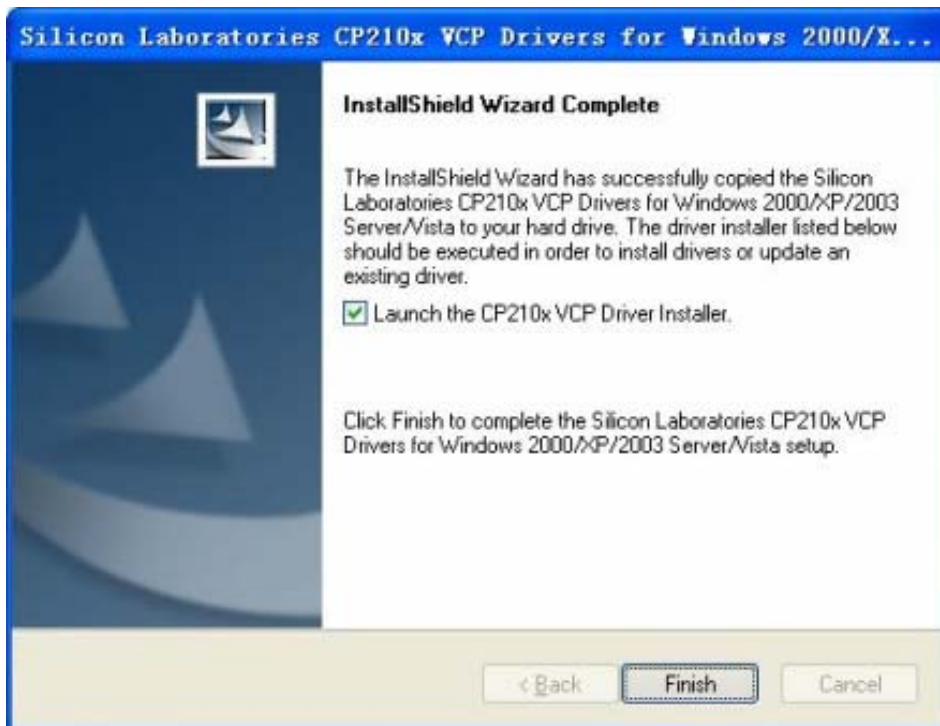
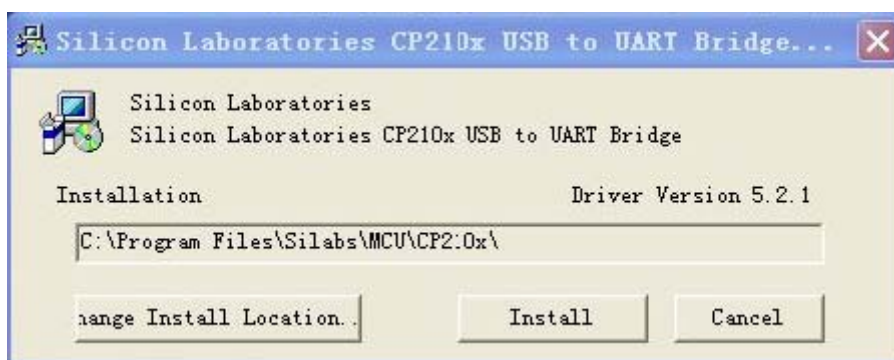
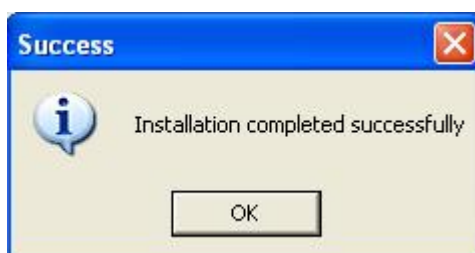


Figure 15

Click **Finish**, and the dialog as follows will pop up:







Click **Install**, and then plug-in transceiver to complete the installation.



IV Run the Software




1 Start IPBOARD Vote Edition Driver

Click " Start " → " All programs " →  →  →  to run IPBOARD Vote Edition driver. Then a tray icon  will be displayed in status bar on lower-right corner of the desktop.



If it shows "Communication with device failed" , please make sure that the transceiver is successfully connected, IPBOARD Vote Edition and USB drivers have been correctly installed. And then click **IPBOARD Driver** on the desktop.

2 Start IPBOARD Vote Edition

1) Click " Start " → " All programs " →  →  →  , then a login window will pop up as shown below:



2) Users can click Login to access IPBOARD Vote Edition directly.

3 Start voting system





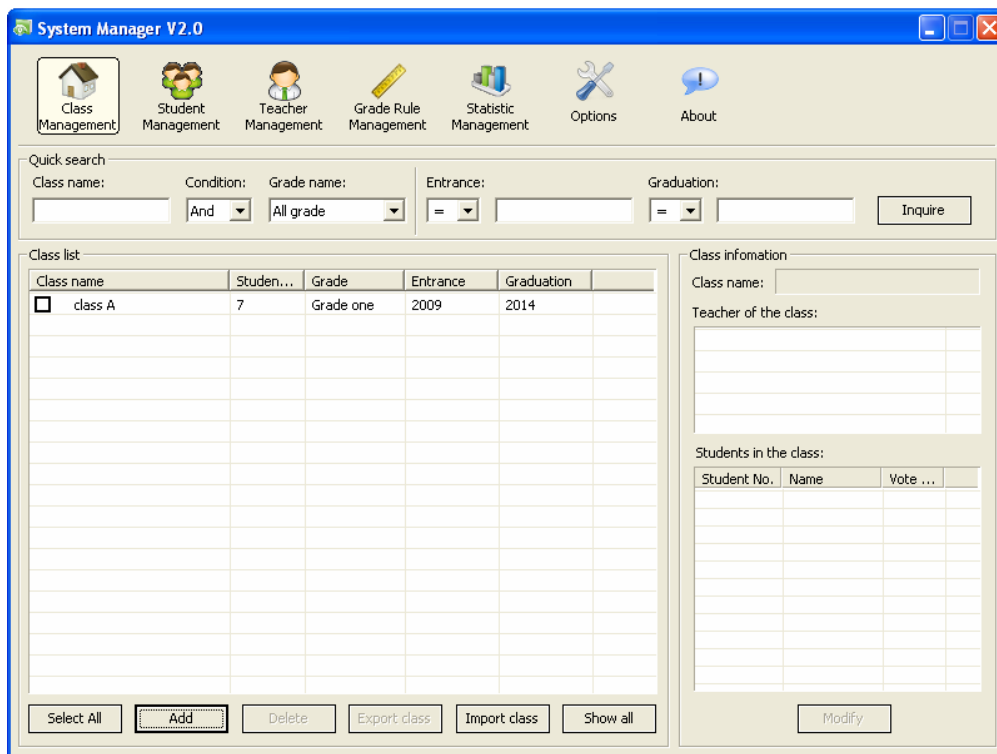
1) Click " Start " → " All programs " →  →  →  , a dialog will appear as shown below:



Figure 16

Key-in the administrator account to access voting system. The default administrator account is **Administrator** and the password is **julong**.

2) Click  to enter the system manage window as follows:




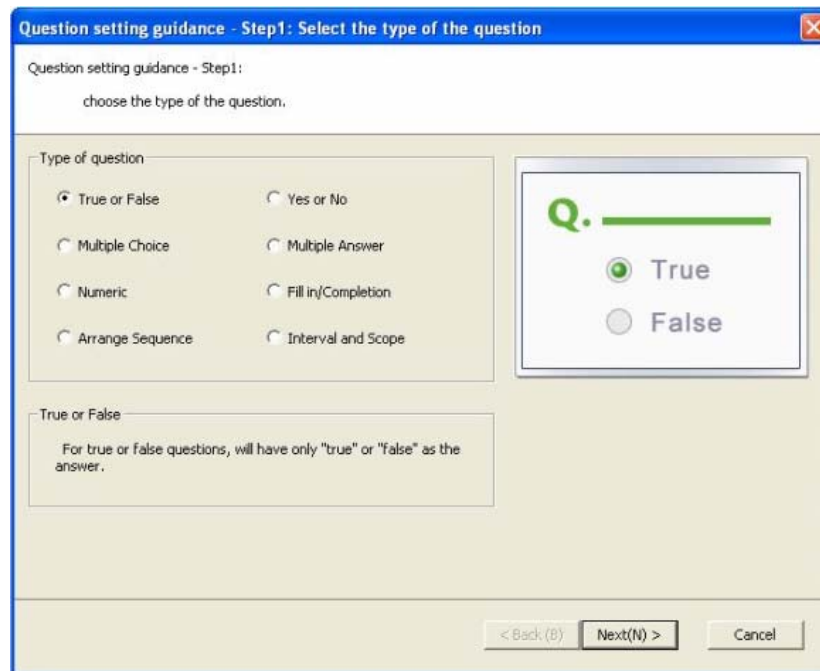
3) For adding, modifying or setting the information in **Class Management**, **Student Management**, **Teacher Management**, **Grade Management**, **Statistics Management** and **System Management**, please see the help text of IPBOARD Vote Edition for details.

V Features of JL-V2 in-class Response System

Combining with IPBOARD Vote Edition V2.0, use JL-V2 to give and gain in-class feedback instantly and create modern interactive classroom.

1 Set Questions

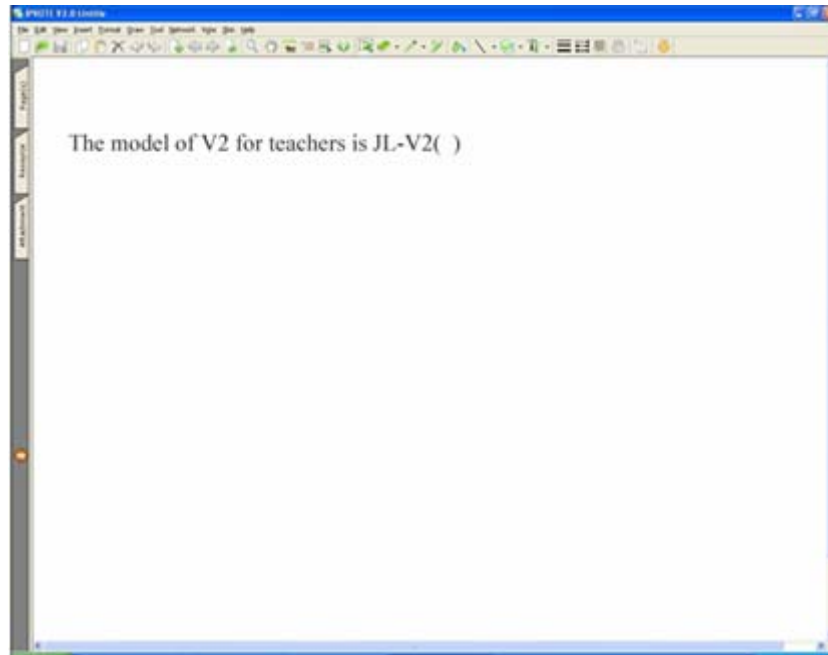
Click  in the menu bar to vote. 8 different types of questions have been built in the IPBOARD Vote Edition, as shown below:



- Two methods are available for setting questions --- **Guide to Set Questions** and **Advanced Question Setting**. Use **Guide to Set Questions** to set questions as an example hereafter.
- Users can set the difficulty and mark of questions as well as test time.

2 Question Management

After setting question, the window as shown below will appear:



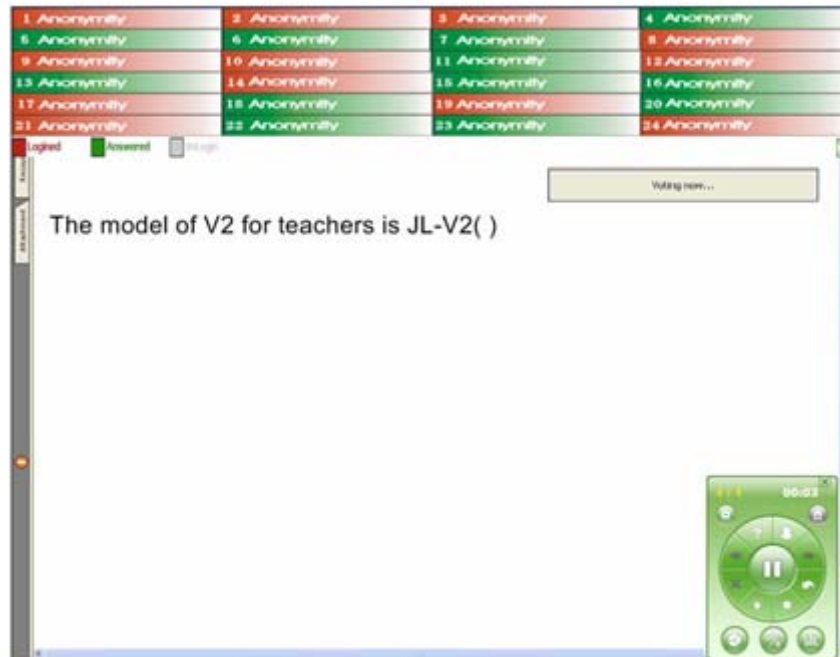
Fill in/Completion

- To enable easy management of test database for teachers, every set question can be added to the test database. And then teachers can search, modify and reuse questions easily, which provides an extremely convenient way for students to review lessons.
- To add questions to the test database, click Vote -> Add to Test Database -> Save Question, and then name and save test question.
- Click Vote -> Question Management to classify, import, export, delete and name test questions. See the help text of IPBOARD Vote Edition V2.0 for details.

3 Combined with JL-V2 response system to answer questions interactively

3.1 Using JL-V2 (S) to answer questions

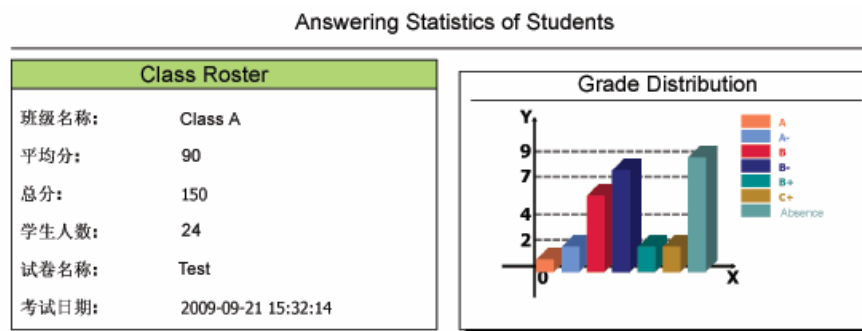
Students can key in answers using **Answer Keypad** on the JL-V2 (S), and then click **OK** or **Send** to submit answers. To correct answers, key in and submit answers after clicking **C** button as follows (e.g., using 1-to-24 JL-V2 in-class response system to conduct test):



3.2 Click **Next** button to skip to next question and **Back** button to previous question. In addition, visual test results can be captured on JL-V2 (T) (displayed in the form of bar chart).

4 Statistics

Teachers can log on **Vote Manage** to view the detailed information of test results and scores, as shown below:



Score Report

Student No.	Name	Answered/Not answered	Correct/Incorrect	Score /Total	Grade
01	Lucy	0 / 30	0 / 30	0 / 150	Absence
02	Lily	30 / 0	23 / 7	115 / 150	B
03	Benny	30 / 0	26 / 4	130 / 150	A-
04	Emma	30 / 0	26 / 4	130 / 150	A-
05	Tony	30 / 0	23 / 7	115 / 150	B
06	Tom	30 / 0	22 / 8	110 / 150	B-
07	Jerk	30 / 0	23 / 7	115 / 150	B
08	Sum	0 / 30	0 / 30	0 / 150	Absence
09	Jin	30 / 0	24 / 6	120 / 150	B+
10	Joth	0 / 30	0 / 30	0 / 150	B-
11	EK	0 / 30	0 / 30	0 / 150	B-
12	Rose	30 / 0	22 / 8	110 / 150	B-
13	Susan	28 / 2	22 / 8	110 / 150	B-
14	Lee	0 / 30	0 / 30	0 / 150	Absence
15	Zhou	29 / 1	22 / 8	110 / 150	B-
16	Mike	30 / 0	23 / 7	115 / 150	B
18	Jame	28 / 2	21 / 9	105 / 150	B-
19	Sawyer	30 / 0	22 / 8	110 / 150	B-
20	Sayid	0 / 30	0 / 30	0 / 150	Absence
21	Sam	30 / 0	23 / 7	115 / 150	B
22	Jun	0 / 30	0 / 30	0 / 150	B
23	Caro	29 / 1	24 / 6	120 / 150	B+
24	Tommy	30 / 0	27 / 3	135 / 150	A

VI Performance Specifications

Content	Specification
Dimension	133mm X 75mm
Net Weight	230g (with battery)
Technical Specification	
LCD Display	128 X 64 lattice (with backlight)
Transmission Frequency	2.4GHZ
Transmitting Power	+2.5dBm
Quantity of Channels	16
Working Electricity	Max.: <85 mA; Sleep mode: <65 mA; Stand-by mode: <4mA,
Working Voltage	DC 3.6V
Power	Less than 0.4W
Continuous operating hours	More than 9 hours
Stand-by Time	More than 240 hours
Power Supply	800mAH, 3 Ni-Mh batteries (AAA batteries are available)
Working Environment	Temperature: -10°C~50°C Relative Humidity: 30%~80% Non-condensing
Storage Environment	Temperature: -25°C~70°C Relative Humidity: 10%~90% Non-condensing
Transmission Technology	Conforming to IEEE802.15.4 Standard
Transmitting Speed	57600bps
Charge Interface	MINI USB
Quantity of keys	24
Data Transmission Range	≤20m (with obstacle), ≤120m (without obstacle)
Charger	Charge 8 JL-V2 (T) or JL-V2 (S) simultaneously
Types of Questions	8 types available: True or False, Yes or No, Multiple Choice, Multiple Answer, Numeric, Fill in/Completion, Arrange Sequence and Scope
Operation System	Windows XP, Windows Vista, windows 7

This device complies with part 15 of the FCC rules. Operation is subject to the following two conditions: (1) this device may not cause harmful interference, and (2) this device must accept any interference received, including interference that may cause undesired operation.

NOTE: The manufacturer is not responsible for any radio or TV interference caused by unauthorized modifications to this equipment. Such modifications could void the user's authority to operate the equipment.

NOTE: This equipment has been tested and found to comply with the limits for a Class B digital device, pursuant to part 15 of the FCC Rules. These limits are designed to provide reasonable protection against harmful interference in a residential installation. This equipment generates uses and can radiate radio frequency energy and, if not installed and used in accordance with the instructions, may cause harmful interference to radio communications. However, there is no guarantee that interference will not occur in a particular installation.

If this equipment does cause harmful interference to radio or television reception, which can be determined by turning the equipment off and on, the user is encouraged to try to correct the interference by one or more of the following measures:

- Reorient or relocate the receiving antenna.
- Increase the separation between the equipment and receiver.
- Connect the equipment into an outlet on a circuit different from that to which the receiver is connected.
- Consult the dealer or an experienced radio/TV technician for help.