

JVC

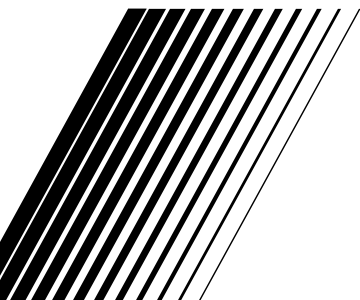


MultiMediaNavigator

For Windows®

BEFORE OPERATION

ENGLISH



INSTRUCTIONS

LYT0515-001A

EN

IMPORTANT**TO CUSTOMERS:****MAKE SURE TO READ THIS CAREFULLY BEFORE OPENING THE SEALED SOFTWARE PACKETS**

Thank you for purchasing our product. In order to start using the software program enclosed, you are required to accept the terms and conditions of the agreement as provided below.

Software License Agreement

This is a legal agreement between you (either an individual or an entity) and Victor Company of Japan, Limited (JVC). By opening the sealed software packages and/or by using the Program, you are agreeing to be bound by the terms of this Agreement. Should you not agree to the terms hereof, return the unopened software packets and the accompanying items to the place where you obtained them.

1. GRANT OF LICENSE

This License Agreement (Agreement) permits you to use the software program (Program) enclosed in this package and/or the accompanying written material (e. g. printed manuals). Although you are also granted license to load the Program into temporary memory (i. e. RAM) or install the Program once into permanent memory (e. g. hard disk, CD-R, or other storage device) of one (1) computer system, you are strictly prohibited to install the Program on a network server for the sole purpose of internal distribution.

2. COPYRIGHT

Notwithstanding the provision of Article 1 hereof, any copyright in the Program is owned exclusively by JVC and is protected by the Japanese copyright law, copyright laws of other countries, as applicable, and relevant provisions under international treaties including the Berne Convention for the Protection of Literary and Artistic Works, as amended, and the Universal Copyright Convention, as amended. Therefore, you must treat the Program like any other copyrighted material except that you may either (a) make one (1) copy of the Program solely for your personal backup or archival purposes, or (b) transfer the Program to a single hard disk, provided that you keep the original solely for your personal backup or archival purposes.

3. RESTRICTION ON THE PROGRAM

You may not reverse engineer, decompile, disassemble, revise or modify the Program, except to the extent that such restriction is expressly prohibited by applicable law. JVC and its distributors and dealers shall not be liable for any claims or defects etc. arising out of or in connection with such prohibited activities as indicated in this Agreement.

4. OTHER RESTRICTIONS

You may not rent, lease or transfer the Program to any third party nor let such a party use the Program.

5. LIMITED WARRANTY

JVC warrants that any media in which the Program is embodied (e.g. floppy discs, CD-ROM, etc.) are free from any defects in materials and workmanship for a period of thirty (30) days from the date of your purchase and that any hardware accompanying the Program is also free from defects to the extent provided in the attached Warranty Form. JVC's entire liability and your exclusive remedy in connection with the Program shall be, at JVC's option, either (a) return of the price paid, or (b) replacement of defective Program media.

6. DISCLAIMER OF WARRANTIES

EXCEPT FOR THE EXPRESS WARRANTIES STATED HEREIN AND TO THE EXTENT PERMITTED BY APPLICABLE LAW, JVC AND ITS SUPPLIERS DISCLAIM ANY OTHER WARRANTIES, EITHER EXPRESS OR IMPLIED, INCLUDING BUT NOT LIMITED TO IMPLIED WARRANTIES OF MERCHANTABILITY AND FITNESS FOR A PARTICULAR PURPOSE IN REGARD TO THE PROGRAM AND THE ACCOMPANYING PRINTED MATERIALS.

7. LIMITED LIABILITY

TO THE EXTENT PERMITTED BY APPLICABLE LAW, IN NO EVENT SHALL JVC AND ITS SUPPLIERS BE LIABLE FOR ANY INDIRECT, SPECIAL, INCIDENTAL OR CONSEQUENTIAL DAMAGES WHATSOEVER, REGARDLESS OF THE FORM OF ACTION WHETHER IN CONTRACT, TORT, STRICT PRODUCT LIABILITY OR OTHERWISE (INCLUDING BUT NOT LIMITED TO DAMAGES FOR LOSS OF PROFITS, BUSINESS INTERRUPTION, LOSS OF BUSINESS INFORMATION OR ANY OTHER PECUNIARY LOSS) ARISING OUT OF OR IN CONNECTION WITH THE USE OF OR INABILITY TO USE THE PROGRAM, EVEN IF JVC HAS BEEN ADVISED OF THE POSSIBILITY OF SUCH DAMAGES.

Victor Company of Japan, Limited

GETTING STARTED	5 – 6
What is MultiMediaNavigator?	5
What is JLIP?	5
Major Features	5
Operating Environment	6
INSTALLATION	7
CONNECTIONS	8 – 9
MultiMediaNavigator WINDOW DISPLAY	10
CREATING TITLE/FRAME IMAGES	11
MODIFYING TITLE/FRAME IMAGES	12
TRANSFERRING TITLE/FRAME IMAGES	13
NOTICE FOR USERS	14
Presto! Mr. Photo Gold	15 – 20

CAUTION:

- Operate this equipment according to the operating procedures described in this manual.
- Use only the provided CD-ROM. Never use any other CD-ROM to run this software.
- Do not attempt to modify this software.
- Changes or modifications not approved by JVC could void user's authority to operate the equipment.

How to handle a CD-ROM

- Take care not to soil or scratch the mirror surface (opposite to the printed surface). Do not write anything or put a sticker on either the front or back surface. If the CD-ROM gets dirty, gently wipe it with a soft cloth outward from the center hole using a circular motion.
- Do not use conventional disc cleaners or cleaning spray.
- Do not bend the CD-ROM or touch its mirror surface.
- Do not store your CD-ROM in a dusty, hot or humid environment. Keep it away from direct sunlight.

What is MultiMediaNavigator?

MultiMediaNavigator is a set of application software that gives you creative control over recordings made with a video source unit. Using this software, you can transfer still images from the video source unit to a PC for editing, as well as control the video source unit from the PC. What's more, you can also create your own Title/Frame Images on the PC, then transfer them to the video source unit that is packaged with this software.

What is JLIP?

JLIP* stands for Joint Level Interface Protocol, a new communication protocol which allows AV units equipped with a JLIP terminal to be controlled by a personal computer.

*  JLIP is a registered trademark of JVC.

Major features

■ Picture Navigator

Picture Navigator allows you to transfer still images between a video source unit and a PC via the RS-232C serial port. Captured images will be 640 x 480 pixels with 16.7 million colors.

■ JLIP Video Capture

JLIP Video Capture allows you to capture still images from a video source unit to a PC via the RS-232C serial port.

■ JLIP Video Producer

JLIP Video Producer allows you to control a video source unit from a PC. You can copy scenes from the video source unit to a VCR by setting In/Out points.

■ Title Creator

You can create or modify your own Title/Frame Images on a PC and transfer them to the video source unit that is packaged with this software.

Operating Environment

- Personal Computer with Microsoft® Windows® 95/Windows® 98
- CPU : Intel® Pentium® or higher processor
- Minimum RAM requirement : 32 MB
- Available Hard Disk space;
MultiMediaNavigator : 20 MB or more
Mr. Photo Gold : up to 140 MB or more
(You can select which applications from Mr. Photo Gold you wish to install.)
- Color display capable of at least 65,536 colors
Recommended 1024 x 768, 16.7 million colors
- 1 free serial transmission port, compatible with 9600 bps or higher transmission rate,
connectable to RS-232C with 9 pin serial connector
(Recommended compatible with UART 16550A)
- Mouse (Windows® compatible)
- CD-ROM drive

NOTE

An optional 9 pin serial conversion adapter is required for computers using a serial communication port other than a standard 9 pin.

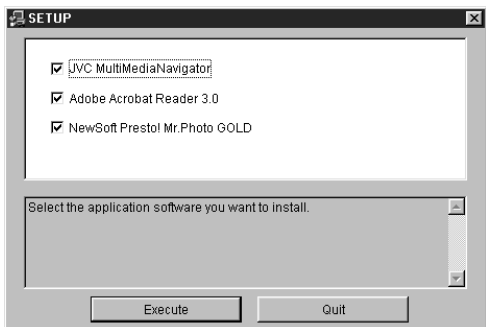
- * Intel® and Pentium® are either registered trademarks or trademarks of Intel Corporation.
- * Microsoft® and Windows® are either registered trademarks or trademarks of Microsoft Corporation in the United States and/or other countries.
- * Other product and company names included in this instruction manual are trademarks and/or registered trademarks of their respective holders.

INSTALLATION

For details on the basic operations of Windows® 95/98, please see your Windows® 95/98 or PC instruction manual.

Starting Windows® 95/98

- Quit any other software you are using. (Check that there are no other application icons on the task bar.)



1 Insert the supplied CD-ROM disc into the CD-ROM drive.

- The **SETUP** window should appear after a few moments.
- Perform the following operation if the setup window does not appear.
 - Double click **My Computer**.
 - Double click the **CD-ROM** icon.
 - Go to Step 2.

2 Click **Execute** on the **SETUP** window.

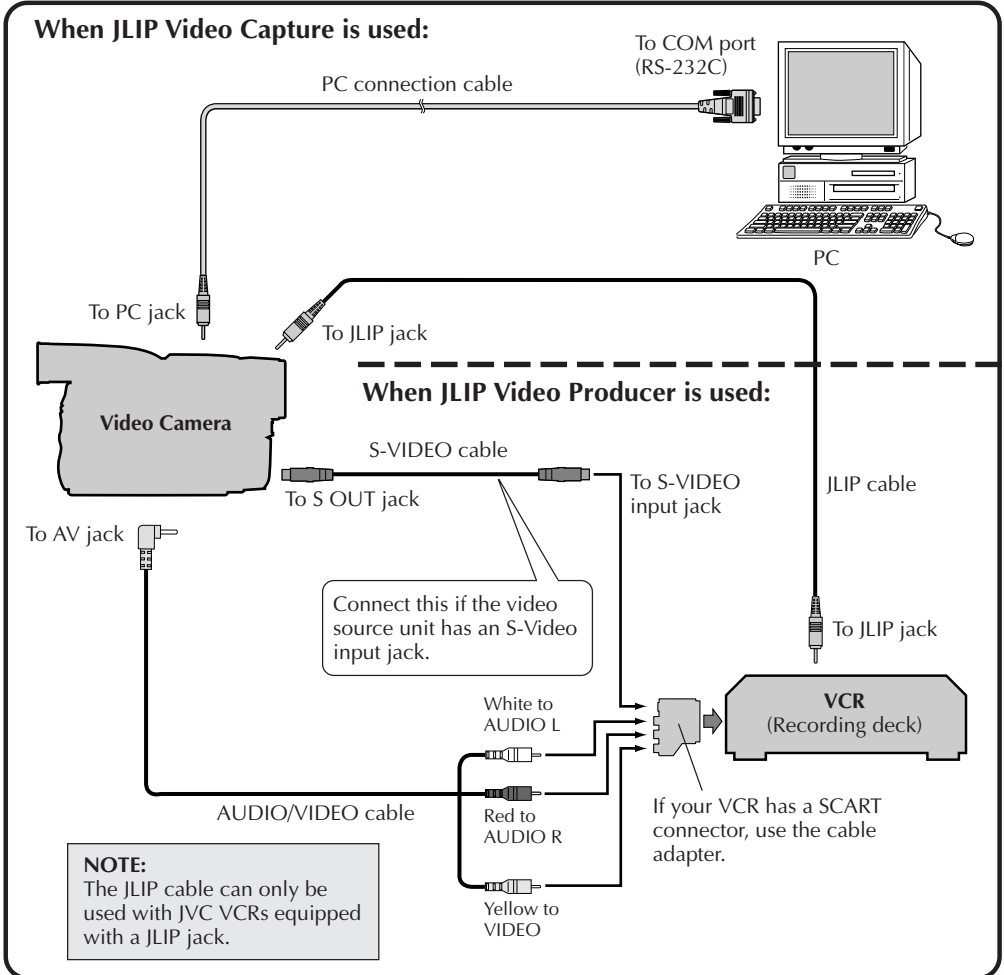
- If the application has already been installed, click on those application items which do not need to be installed to remove the check mark displayed.

3 Follow the on-screen instructions.

4 Click **Quit** on the **SETUP** window when installation is complete.

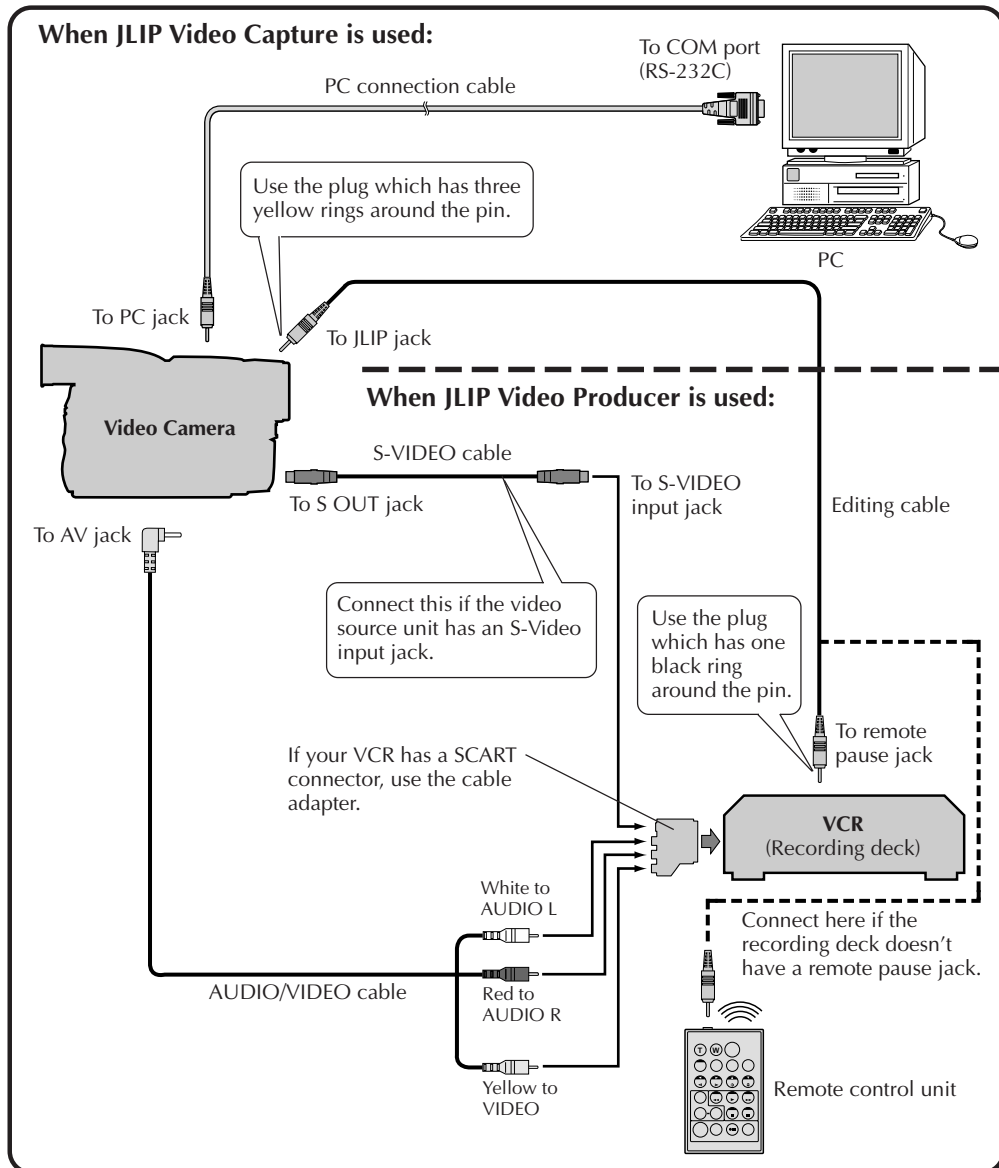
- To assure safety, make sure all units are turned off before making any connections.
- We recommend that you use the AC Power Adapter/Charger.
- When connecting the provided cables, be sure to plug the connectors equipped with core filters into the video camera.
- Do not make any connections to the video camera's DV OUT connector.

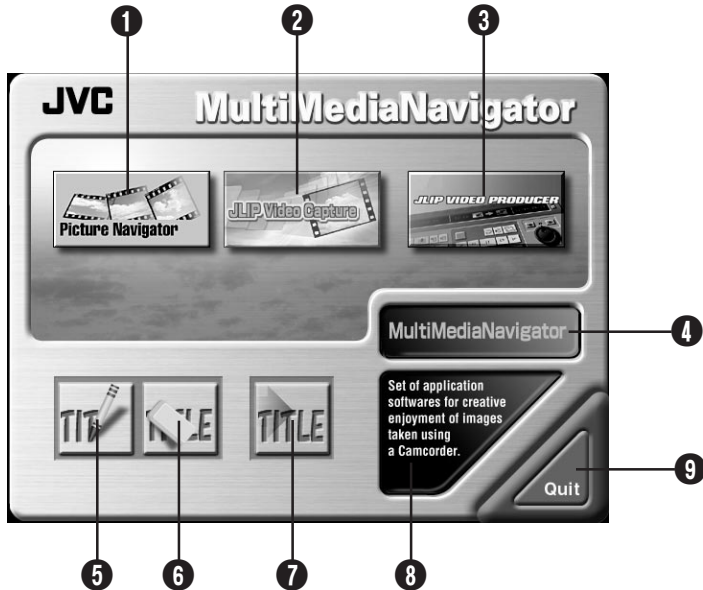
WHEN CONNECTED TO A VCR EQUIPPED WITH A JLIP JACK



WHEN CONNECTED TO A VCR NOT EQUIPPED WITH A JLIP JACK

When using a VCR not equipped with a JLIP jack, set your VCR brand using the remote control unit provided with the video camera, then perform editing using the remote control.

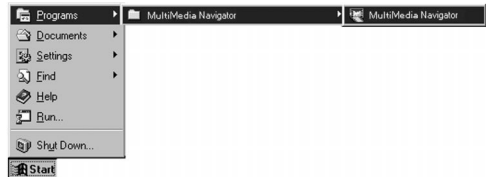




- ❶ Starts up Picture Navigator.
- ❷ Starts up JLIP Video Capture.
- ❸ Starts up JLIP Video Producer.
- ❹ Displays the name of the selected application.
- ❺ Creates new Title/Frame Images.
- ❻ Modifies Title/Frame Images.
- ❼ Transfers Title/Frame Images to a video source unit.
- ❽ Displays information about the selected application.
- ❾ Closes MultiMediaNavigator.

HOW TO START UP MultiMediaNavigator

- 1 Turn on the PC.
- 2 Select **Start — Program — MultiMediaNavigator**.
- 3 MultiMediaNavigator starts up.



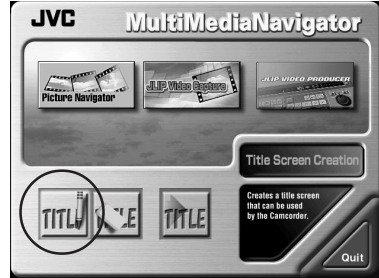
HOW TO CLOSE MultiMediaNavigator

Click **Quit** in the **MultiMediaNavigator** window.

You can create your own Title/Frame Images to transfer to a video source unit.

1 Click on the **Title Screen Creation** icon in the **MultiMediaNavigator** window.

- An image editor application that supports the BMP format starts up.
- If you wish to link to a different image editor application, refer to **Help** in Windows®.



2 Create your own Title/Frame Image.

- For more details, refer to the image editor application's instruction manual.



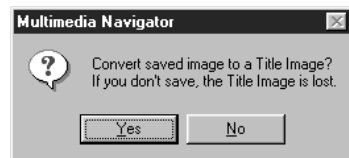
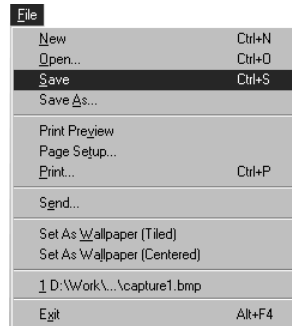
3 Select **File — Save**.

- If you select **File — Save As**, you will not be able to transfer the Title/Frame Image to the video source unit.

4 Select **File — Exit**.

- When the message **“Convert saved image to a Title Image? If you don't save, the Title Image is lost.”** appears, click **Yes**.
- When the message **“Title Image was saved as FRAME (number)”** appears, click **OK**.

The image is saved in a file format (JPEG) that can be transferred to the video source unit.



You can modify Title/Frame Images you've already created.

1 Click on the **Title Screen Editing** icon in the **MultimediaNavigator** window.

2 Select the Title/Frame Image file you wish to modify and click **OK**.

- An image editor application that supports the BMP format starts up.
- If you wish to link to a different image editor application, refer to **Help** in Windows®.

3 Modify your Title/Frame Image.

- For more details, refer to the image editor application's instruction manual.

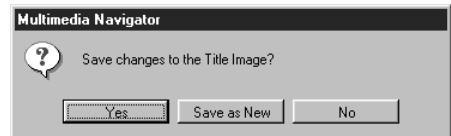
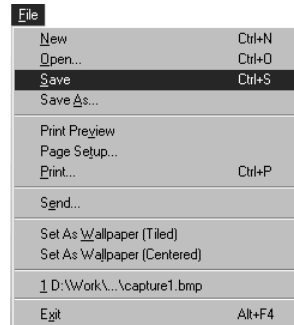
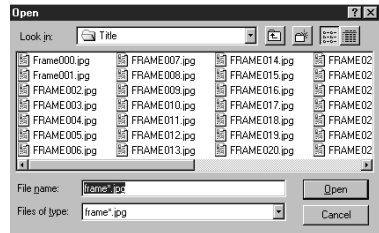
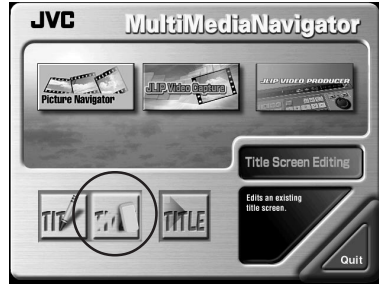
4 Select **File** — **Save**.

- If you select **File** — **Save As**, you will not be able to transfer the Title/Frame Image to the video source unit.

5 Select **File** — **Exit**.

- When the message "**Save changes to the Title Image?**" appears, click **Yes** if you wish to use the same file name.
- If you wish to use a different file name, click **Save as New**.
- If you wish to cancel, click **No**.
- When the message "**Title Image was saved as FRAME (number)**" appears, click **OK**.

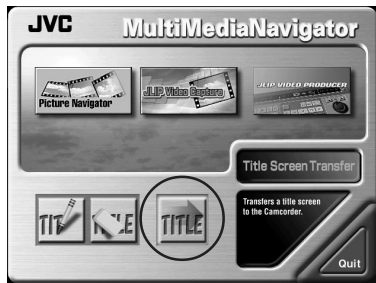
The image is saved in a file format (JPEG) that can be transferred to the video source unit.



You can transfer Title/Frame Images you created on the PC to the video source unit that is packaged with MultiMediaNavigator.

Preparation

1. Insert a MultiMediaCard into the video source unit.
 2. Set your video source unit to the **PLAY** or **PLAY/PC** position.
- (For more details, refer to the video source unit's instruction manual.)



1 Click the **Title Screen Transfer** icon in the **MultiMediaNavigator** window.

- Picture Navigator starts up.

2 Double-click the **TitleScreen** album.

- A list of all the Title/Frame Images appears in the window.

3 Select the Title/Frame Image you wish to transfer.

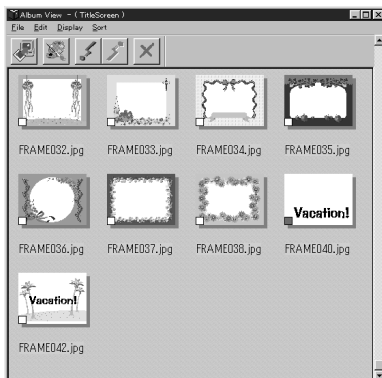
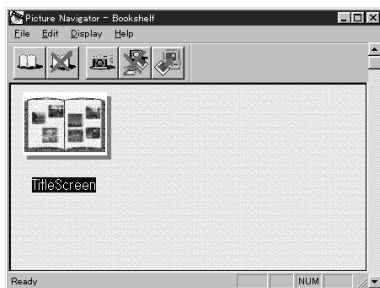
- The check box in the lower left corner of the index image changes color.

4 Click the **Transfer** icon or select **Edit — Transfer**.

- The Title/Frame Image is transferred to the video source unit and stored in the MultiMediaCard.

5 Add the Title/Frame Image to a still image in the video source unit.

(For more details, refer to the video source unit's instruction manual.)



Use of this software is authorized according to the terms of the software license.

When contacting the nearest JVC office or agency in your country about this software (refer to the JVC Worldwide Service Network at <http://www.jvc-victor.co.jp/english/worldmap/index-e.html>), please fill out the following and have the appropriate information ready.

Product Name		
Model		
Problem		
Error Message		
PC	Manufacturer	
	Model	<input type="checkbox"/> Desktop <input type="checkbox"/> Laptop
	CPU	
	OS	
	Memory	MB
	Available Hard Disk Space	MB

Please note that it may take some time to respond to your questions, depending on their subject matter.

JVC cannot answer questions regarding basic operation of your PC, or questions regarding specifications or performance of the OS, other applications or drivers.



Mr. Photo Gold:

Presto! Mr. Photo
Presto! PhotoAlbum
Presto! ImageFolio

For Windows

* Please consult your nearest NewSoft service center for technical support. (see next page)

NewSoft international service centre:

U.S.A: 4113 Clipper Court, Fremont, CA 94538, USA
Tel: 1-510-445-8600 Fax: 1-510-445-8601
Technical Support Hot Line: 1-510-445-8616
E-mail: tech@newsoftinc.com
<http://www.newsoftinc.com>

Taiwan: 3F, No.19-3, SanChong Rd., NanKang, Taipei, Taiwan, R.O.C.
Tel: 886-2-2655-1234 Fax: 886-2-2655-1100
Technical Support Hot Line: 886-2-2655-2266
E-mail: support@newsoft.com.tw
<http://www.newsoft.com.tw>

Japan: 6-21-3 Shinbashi Minato-Ku, Tokyo 105-0004 Japan
Tel: 81-3-5472-7008 Fax: 81-3-5472-7009
E-mail: support@newsoft.co.jp
<http://www.newsoft.co.jp>

U.K.: The Software Centre, East Way,
East Mill Industrial Estate, Ivybridge
Devon, PL21 9PE, United Kingdom
Tel: 44-01752-201148 Fax: 44-01752-894833

France: Info Trade Centre
d'activités de l'Ourcq 45,
rue Delizy 93692 Pantin, France
Tel: 33-1-4810-7585 Fax: 33-1-4810-7555

Mr. Photo stores and catalogues all of your valuable photos. You can sort photos and film “rolls” by date and title, or search by keyword, date, and other image properties. Then drag-and-drop photos to the Application Bar to create photo masterpieces using ready-made templates or design electronic photo albums. Click the Slide Show icon to view selected photos in a “roll” of film, or drag-and-drop a photo to the E-mail icon to send it to family and friends.

Features

- Acquire photos from digital cameras, scanners, floppy disks, PhotoCDs, and the Internet.
- Catalogue photos in “rolls” of film that you can customize and rearrange.
- Enhance photos instantly (remove red-eye, adjust brightness/contrast, blur/sharpen).
- Drag-and-drop photos to print, e-mail, create HTML slide shows, or post on the Internet.
- Drag-and-drop photos to other applications for further editing or creative projects.
- Save photos as a screen saver or as wallpaper.
- Print stickers, labels, and photo catalogues.
- Support for EXIF 1.0, 2.0, 2.1, and 2.1(R98) file formats.
- Display and play attached audio files.
- **EXIF page photo property**
Examine information for EXIF files: shooting time, exposure time, etc.
- **Easy access to other applications**
Communicate with other applications without leaving Mr. Photo.
- **Presto! PhotoComposer**
Combine photos. Put people and scenery together to create brand new masterpieces.
- **Presto! Panorama**
Visit a museum, walk through real estate, go sightseeing at a famous landmark — all inside a panorama from photos you personally stitch together.
- **Presto! PrintFun**
Single or batch printing for stickers, labels, photo catalogs -- on custom sized paper.

System Requirements

- Digital Camera plus digital camera software.
- Scanner, if you intend to scan photos.
- A PC with at least a 486 microprocessor (a Pentium processor is recommended) and 16 MB RAM.
- Recommend at least 30 MB of hard disk space available after installation. Mr. Photo will need this space to work in.
- A CD-ROM drive to load Mr. Photo.
- Super VGA display card.

NOTE:

The Mr. Photo Gold software can only be used with JVC digital video cameras in conjunction with the JLIP Video Capture software.

Presto! PhotoAlbum helps you create electronic photo albums that keep your memories alive forever. Just drag-and-drop photos, frames, clip art, textures, and special effects. You can also personalize your albums with voice-overs and sound effects, then produce album slide shows to post to the Internet or send completed albums by e-mail.

Features

- Scan or import your photos from digital cameras and scanners.
- Auto color correction for input photos.
- Drag-and-drop easy-editing operation.
- Photo Browser with thumbnail views of photos.
- Share albums with an Internet Browser.
- Library of over 500 pieces of clip art for decoration.
- Sound attachment with albums, pages and photos.
- Independent album playback support.
- Supports popular file formats: TIF, PCX, BMP, TGA, JPG, PCD, WMF, FPX, PNG, etc.

System Requirements

- An IBM PC 486, Pentium or compatible computer.
- A CD-ROM drive.
- A hard disk drive with at least 50 MB space available to hold and run the program effectively.
- At least 16 MB of RAM (preferably 32 MB).
- MS Windows 95, 98 or Windows NT 4.0.

Recommended System Requirements

- A sound card with a microphone.
- A color printer.
- A network browser such as Internet Explorer 3.0 or Netscape Navigator 3.0, or later.

ImageFolio is a comprehensive multimedia image processing program running under MS Windows 95, 98 or Windows NT. It enables you to process in detail on your computer screen scanned images such as photographs, graphics and drawings, as well as images captured from video devices such as a VCR, a laser disc, a digital camera, a video capture box, etc.

You can create new images by using the powerful tools included in the software. Its sophisticated set of image editing tools enables you to quickly sketch an image canvas in order to create a new image, or to enhance pre-existing ones. With this software, your imagination is your only limit!

Features

Image Input

- Captures images from flatbed/hand scanner, digital camera, capture box, etc.
- Auto & Semi-auto image stitching for inputting large-sized images.
- Loading/saving images with various popular file formats such as TIF, PCX, BMP, TGA, JPG, PCD, WMF, PNG, etc.
- New Flash Pix format support.

Image Output

- Print color-adjustment variations for examining the printing effect before actual printing.
- OLE 2.0 support for stand-alone editing mode.
- Easy artwork design for home page production and HTML applications.

Image Editing and Processing

- Multiple-layer single document for complicated object organization.
- Drag-and-drop floating images among documents (moving a selected area to new or other canvases).
- Precise color selection by setting color channels or choosing from a palette.
- Complete drawing and painting set of tools to work on images such as line, paint-brush, airbrush, color gradation, eraser, zoom, text, eyedropper, free-hand rotate, hue/saturation brush, brightness/darkness brush, blur/sharpen brush, image hose, etc.
- Definable image hose tool for quick insertion of image set on canvas.
- Anti-alias feature with all graphic tools to enhance the drawing effect.
- Full selection tools for easy masking of irregularities in objects.
- Creating magic 3D effects with definable light source for selected objects with one touch.

- Generating object shadows in selectable light directions with one touch.
- Elegant templates provided for easy applications of daily-life photo usage.
- Image fine-tuning functions to adjust brightness, contrast, hue, saturation, tone distribution (equalization) and so on.
- Multiple filters to produce special effects such as smooth, sharpen, edge detection, emboss and mosaic.
- Effect browser providing previews in actual size of image, processed with all the fine-tuning functions and filters.
- 16- and 32- bit Adobe™ plug-in filter interface support.

System Requirements

The following hardware devices and software are required to run the software:

- An IBM PC 486, Pentium or compatible computer.
- One CD-ROM drive.
- One hard disk drive with at least 60 MB space available to hold and run the program effectively.
- At least 8 MB of RAM (preferably 16 MB).
- MS Windows 95, 98 or Windows NT.

To make fully efficient use of the program, the following additional hardware and software elements are highly recommended:

- 50 MB or more of virtual memory.
- A color printer supported by MS Windows 95.

