

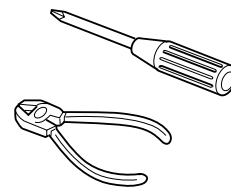
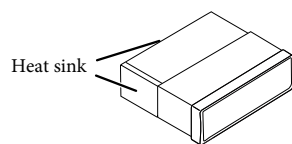
This unit is designed to operate on **12 V DC, NEGATIVE ground electrical systems**. If your vehicle does not have this system, a voltage inverter is required, which can be purchased at JVC car audio dealers.

WARNINGS

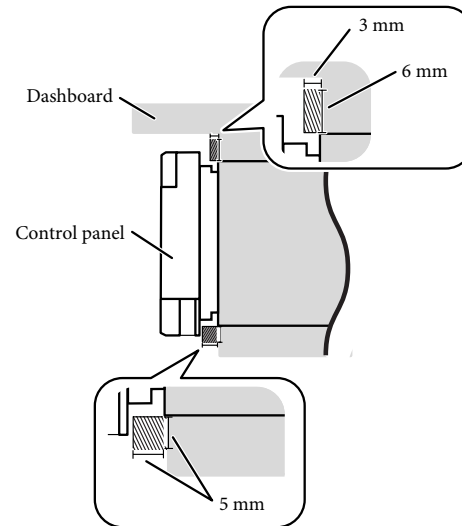
- DO NOT install any unit or wire any cable in location where;
 - it may obstruct the steering wheel and gearshift lever operations, as this may result in a traffic accident.
 - it may obstruct the operation of safety devices such as air bags, as this may result in a fatal accident.
 - it may obstruct visibility.
- DO NOT operate any unit while manipulating the steering wheel, as this may result in a traffic accident.
- The driver must not watch the monitor while driving. It may lead to carelessness and cause an accident.
- If you need to operate the unit while driving, be sure to look around carefully.
- If the parking brake is not engaged, "Parking Brake" appears on the monitor, and no playback picture will be shown.
 - This warning appears only when the parking brake lead is connected to the parking brake system built in the car.

Notes on electrical connections:

- Replace the fuse with one of the specified rating. If the fuse blows frequently, consult your JVC car audio dealer.
- It is recommended to connect to the speakers with maximum power of more than 50 W (both at the rear and at the front, with an impedance of **4 Ω to 8 Ω**).
If the maximum power is less than 50 W, change <Amplifier Gain> setting to prevent the speakers from being damaged (see page 44 of the INSTRUCTIONS).
- To prevent short circuits, cover the terminals of the UNUSED leads with insulating tape.
- The heat sink becomes very hot after use. Be careful not to touch it when removing this unit.



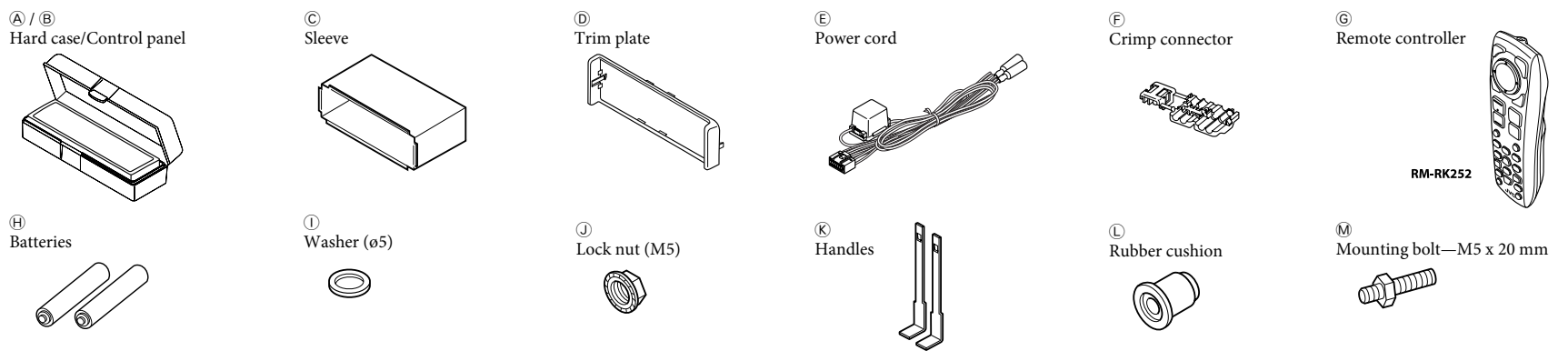
Required space for installation



Trim plate is detached on this illustration for explanation.

Parts list for installation and connection

The following parts are provided for this unit. After checking them, please set them correctly.



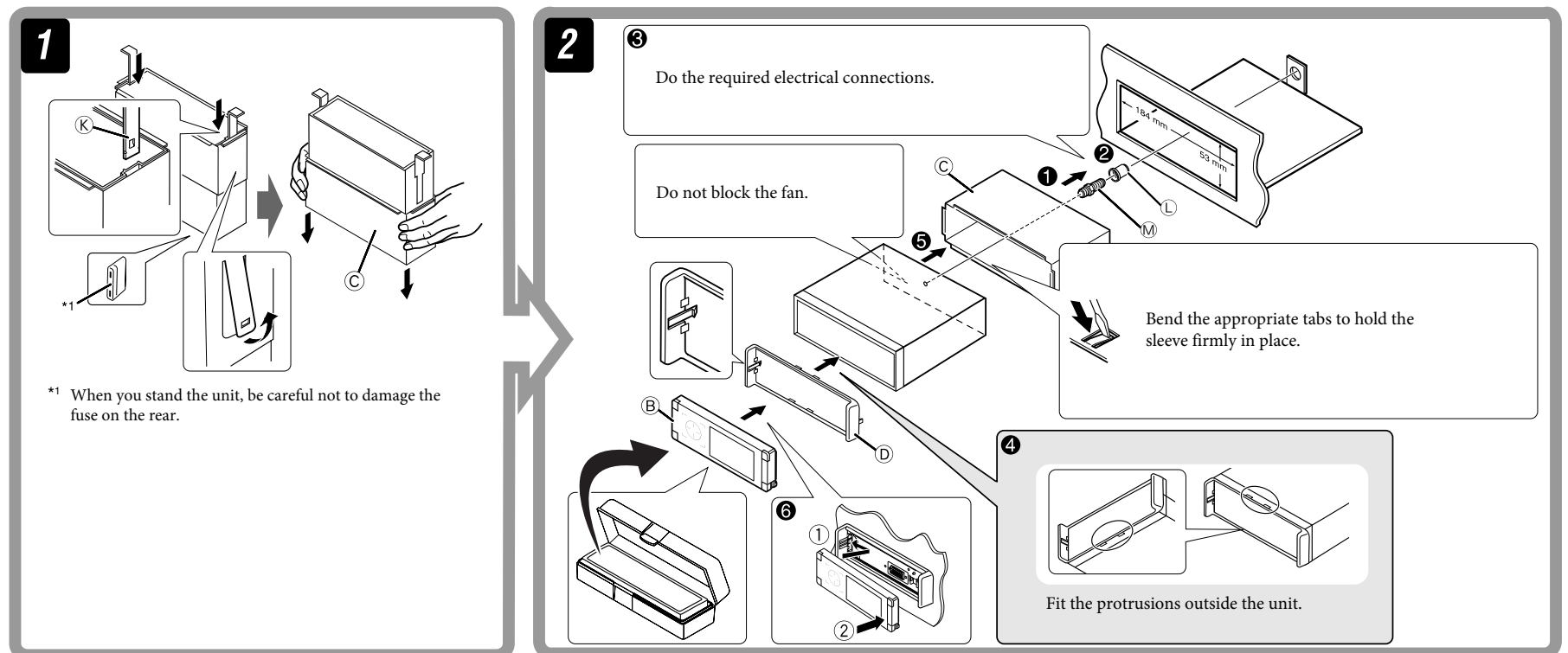
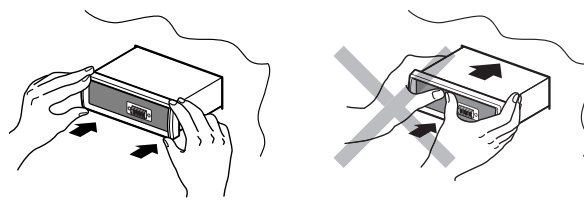
INSTALLATION (IN-DASH MOUNTING)

The following illustration shows a typical installation. If you have any questions or require information regarding installation kits, consult your JVC car audio dealer or a company supplying kits.

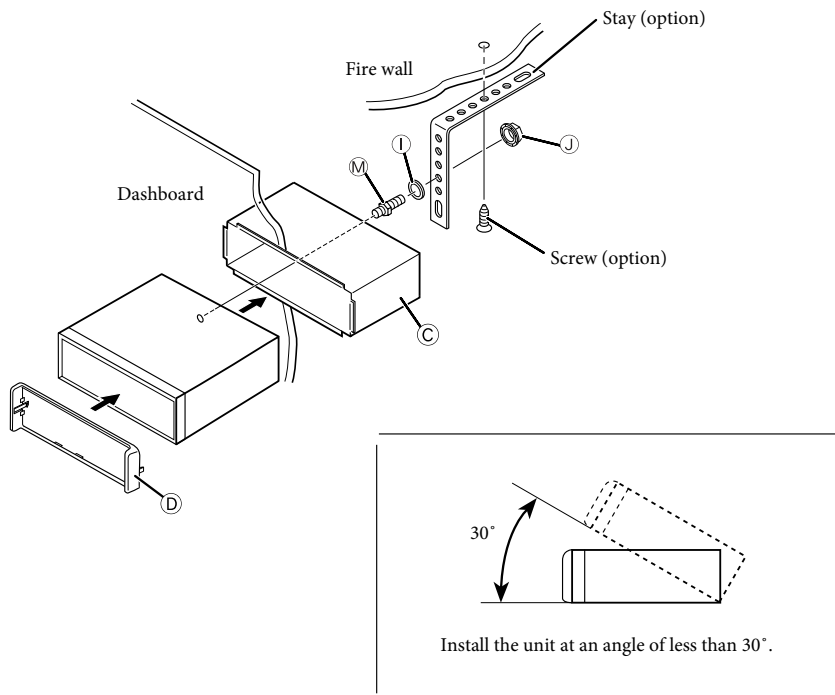
- If you are not sure how to install this unit correctly, have it installed by a qualified technician.
- Make sure not to block the fan on the rear panel to maintain proper ventilation when installing the unit.
- You cannot install the unit on the car which has any obstacles in the space shown in "Required space for installation" above.

Caution when installing

- Fit the unit into the mounting sleeve by using four corners of the trim plate.
- DO NOT press the panel (shaded in the illustration).

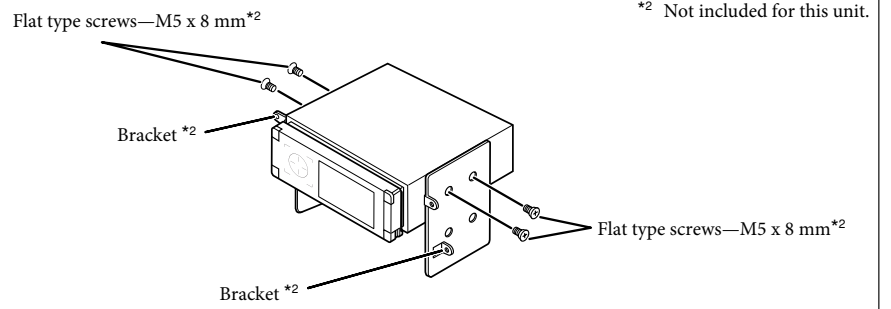


When using the optional stay



When installing the unit without using the sleeve

In a car having the "Required space for installation" (see page 1), first remove the car radio and install the unit in its place.

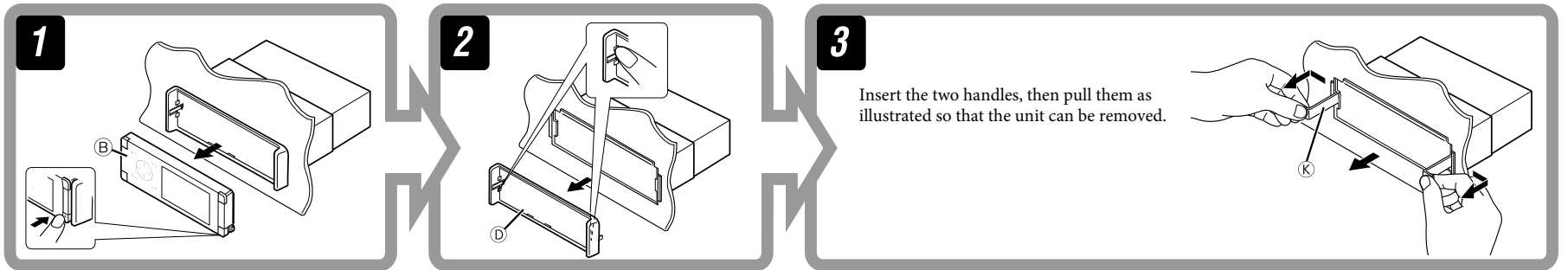


*2 Not included for this unit.

Note: When installing the unit on the mounting bracket, make sure to use the 8 mm-long screws. If longer screws are used, they could damage the unit.

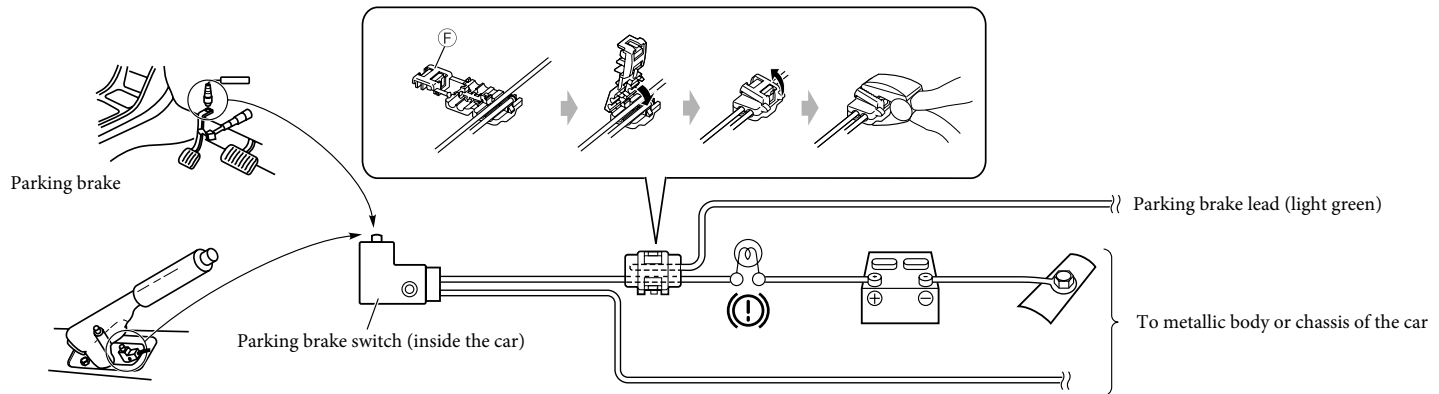
Removing the unit

Before removing the unit, release the rear section.



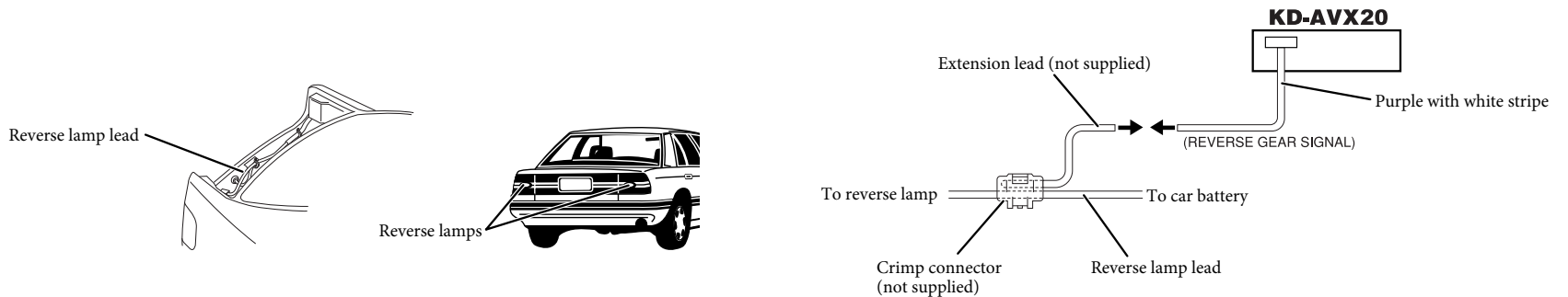
A Connecting the parking brake lead

Connect the parking brake lead to the parking brake system built in the car.



B Connecting the reverse gear signal lead (for rear view camera) (REVERSE GEAR SIGNAL)

Locate the reverse lamp lead in the trunk.



TROUBLESHOOTING

- **The fuse blows.**
- * Are the red and black leads connected correctly?
- **Power cannot be turned on.**
- * Is the yellow lead connected?
- **No sound from the speakers.**
- * Is the speaker output lead short-circuited?
- **Sound is distorted.**
- * Is the speaker output lead grounded?
- * Are the "-" terminals of L and R speakers grounded in common?

- **Noise interfere with sounds.**
- * Is the rear ground terminal connected to the car's chassis using shorter and thicker cords?
- **Unit becomes hot.**
- * Is the speaker output lead grounded?
- * Are the "-" terminals of L and R speakers grounded in common?
- **This unit does not work at all.**
- * Have you reset your unit?

ELECTRICAL CONNECTIONS

To prevent short circuits, we recommend that you disconnect the battery's negative terminal and make all electrical connections before installing the unit.

- Be sure to ground this unit to the car's chassis again after installation.

Typical connections

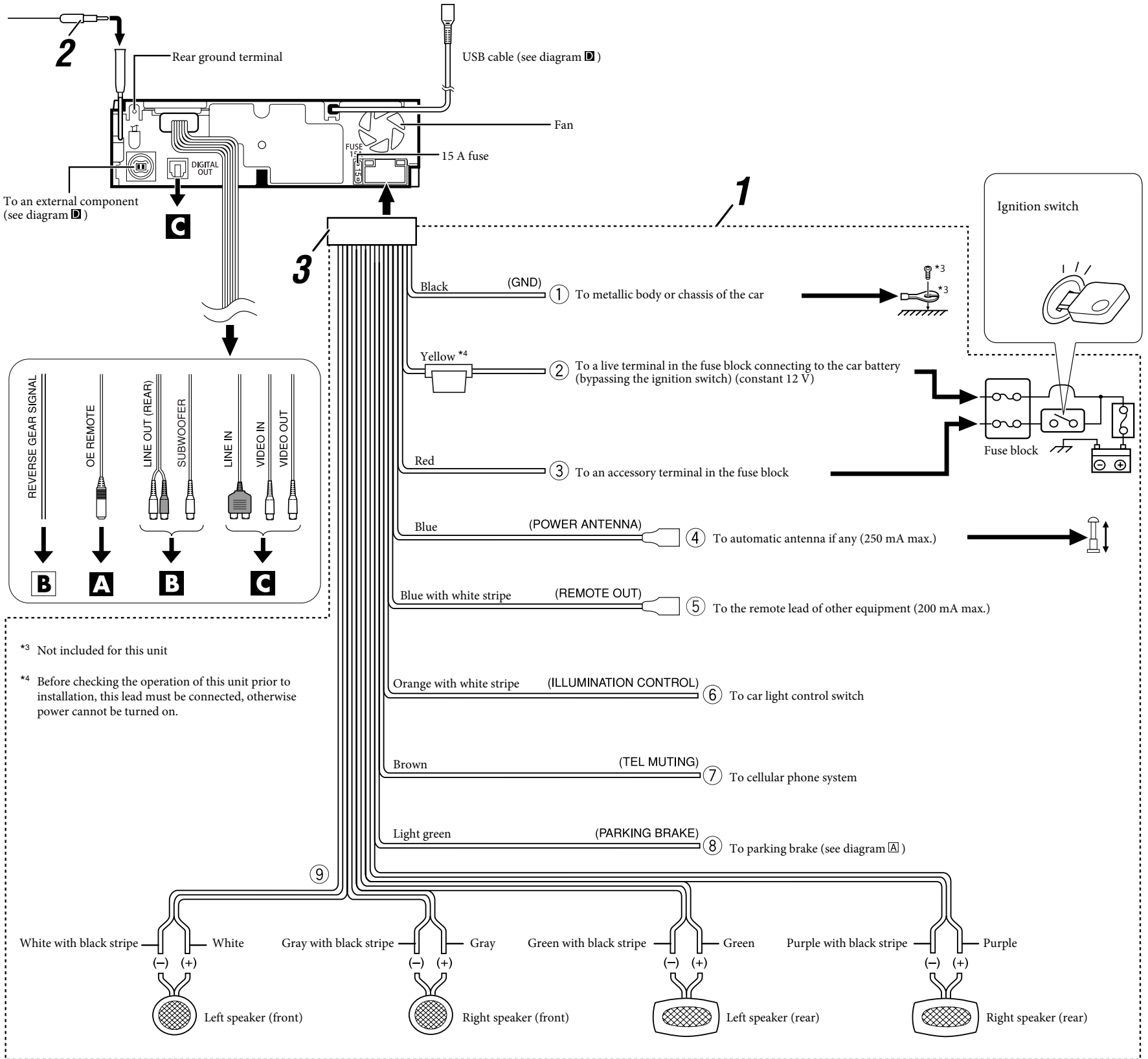
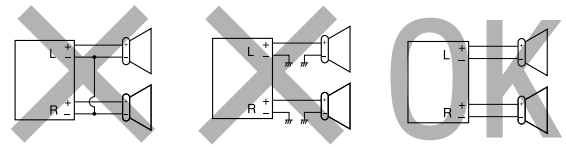
Before connecting: Check the wiring in the vehicle carefully. Incorrect connection may cause serious damage to this unit.

The leads of the power cord and those of the connector from the car body may be different in color.

- 1 Connect the colored leads of the power cord in the order specified in the illustration below.
- 2 Connect the antenna cord.
- 3 Finally connect the wiring harness to the unit.

PRECAUTIONS on power supply and speaker connections:

- DO NOT connect the speaker leads of the power cord to the car battery; otherwise, the unit will be seriously damaged.
- BEFORE connecting the speaker leads of the power cord to the speakers, check the speaker wiring in your car.

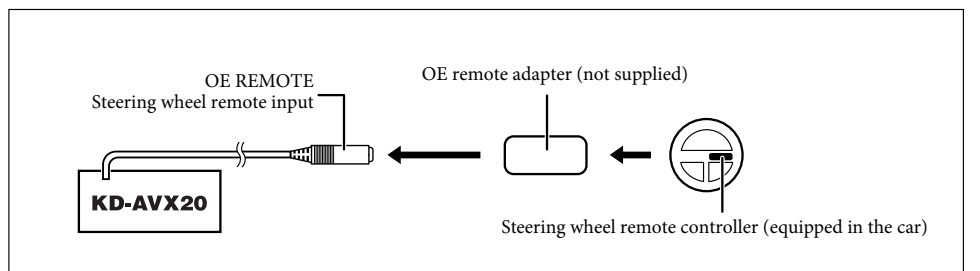


*3 Not included for this unit

*4 Before checking the operation of this unit prior to installation, this lead must be connected, otherwise power cannot be turned on.

A Connecting to the steering wheel remote controller

If your car is equipped with the steering wheel remote controller, you can operate this unit using the controller. For connection, an exclusive remote adapter (not supplied) which matches your car is required. For details, consult the same car audio dealer as where the unit is purchased.



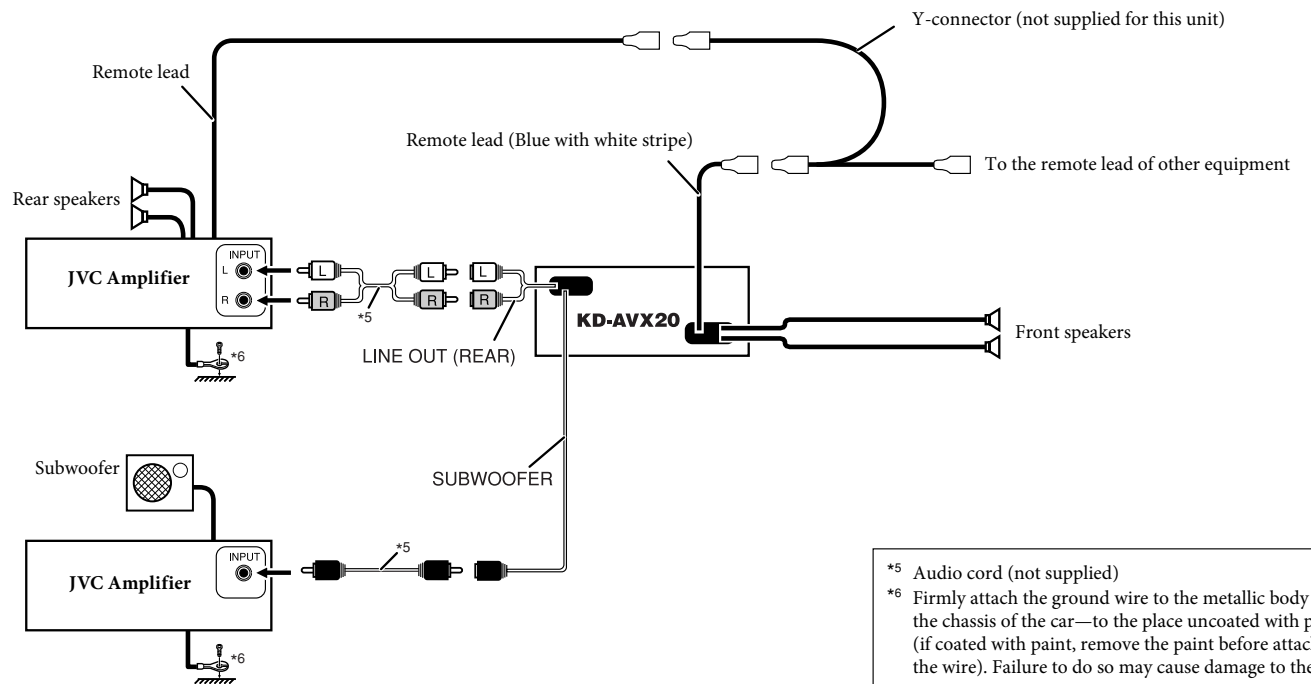
B Connecting the external amplifiers

You can connect amplifiers to upgrade your car stereo system.

- Connect the remote lead (blue with white stripe) to the remote lead of the other equipment so that it can be controlled through this unit.

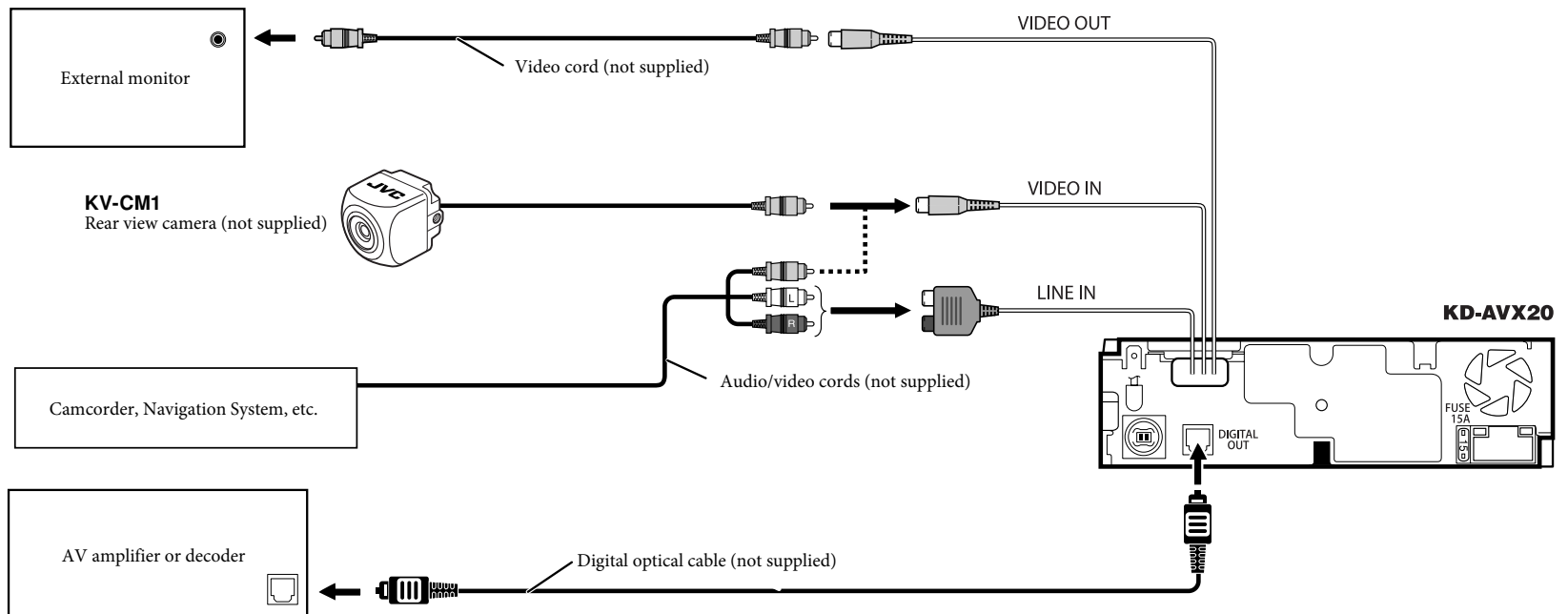
• For amplifier only:

- Disconnect the speakers from this unit, and connect them to the amplifier. Leave the speaker leads of this unit unused.
- You can switch off the built-in amplifier and send the audio signals only to the external amplifier(s) to get clear sounds and to prevent internal heat buildup. See page 44 of the INSTRUCTIONS.



*5 Audio cord (not supplied)
*6 Firmly attach the ground wire to the metallic body or to the chassis of the car—to the place uncoated with paint (if coated with paint, remove the paint before attaching the wire). Failure to do so may cause damage to the unit.

C Connections for external component playback



D Connecting external components

When connecting the external components, refer also to the manuals supplied for the components and adapter.

CAUTION:

Before connecting the external components, make sure that the unit is turned off.

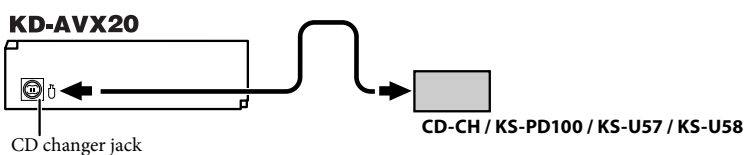
You can connect a JVC CD changer (CD-CH)—CH-X1500, etc. to the CD changer jack.

You can also connect the following components through the various JVC adapters.

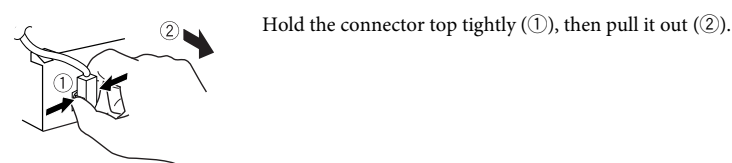
- Connection cords may need to be purchased separately.

Component	Adapter	Model name
iPod	Interface adapter for iPod	KS-PD100
Portable audio player with line output jacks	Line input adapter	KS-U57
Portable audio player with 3.5 mm stereo mini jack	AUX input adapter	KS-U58

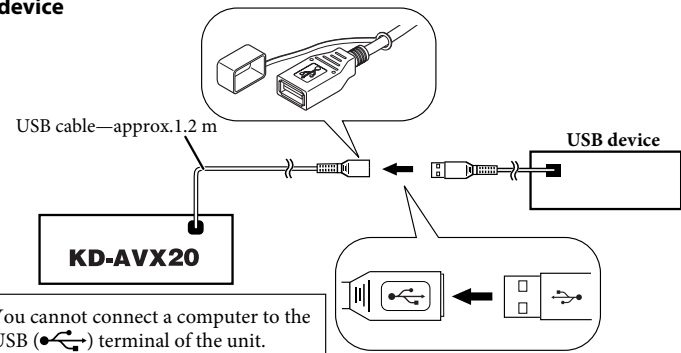
When connecting an external component



To disconnect the connector



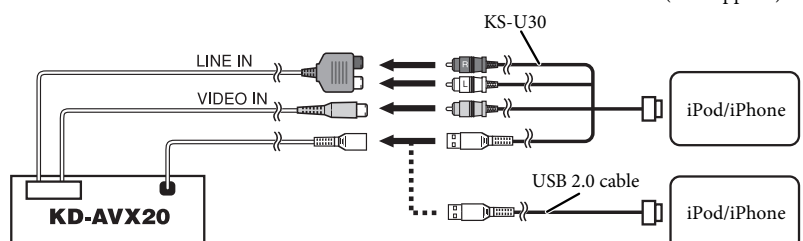
USB device



Connecting the iPod or the iPhone to the USB terminal

You can connect the iPod or the iPhone to the USB terminal using the following cables:

- To listen to the music: USB 2.0 cable (accessory of the iPod/iPhone)
- To watch the video: USB Audio and Video cable for iPod/iPhone—KS-U30 (not supplied)*7



*7 When using the cable, make sure <iPod (Off)> is selected for <AV Input> (see page 42 of the INSTRUCTIONS).

- iPod is a trademark of Apple Inc., registered in the U.S. and other countries.
- iPhone is a trademark of Apple Inc.