

JVC KD-DV5506/KD-DV5505/ KD-DV5504

Installation/Connection Manual

GET0606-008B
[A/UI]

0409DTSMDTJEIN
EN

© 2009 Victor Company of Japan, Limited

This unit is designed to operate on **12 V DC, NEGATIVE ground electrical systems**. If your vehicle does not have this system, a voltage inverter is required, which can be purchased at JVC car audio dealers.

WARNINGS

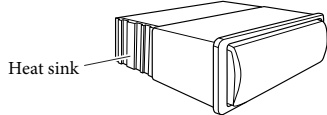
- **DO NOT install any unit or wire any cable in a location where;**
 - it may obstruct the steering wheel and gearshift lever operations.
 - it may obstruct the operation of safety devices such as air bags.
 - it may obstruct visibility.
- **DO NOT operate the unit while driving.**
- **If you need to operate the unit while driving, be sure to look around carefully.**
- **The driver must not watch the monitor while driving.**
- **If the parking brake is not engaged, "DRIVER MUST NOT WATCH THE MONITOR WHILE DRIVING." appears on the monitor, and no playback picture will be shown.**
 - This warning appears only when the parking brake lead is connected to the parking brake system built in the car.

To prevent short circuits, we recommend that you disconnect the battery's negative terminal and make all electrical connections before installing the unit.

- **Be sure to ground this unit to the car's chassis again after installation.**

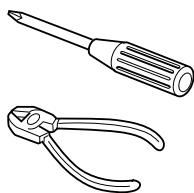
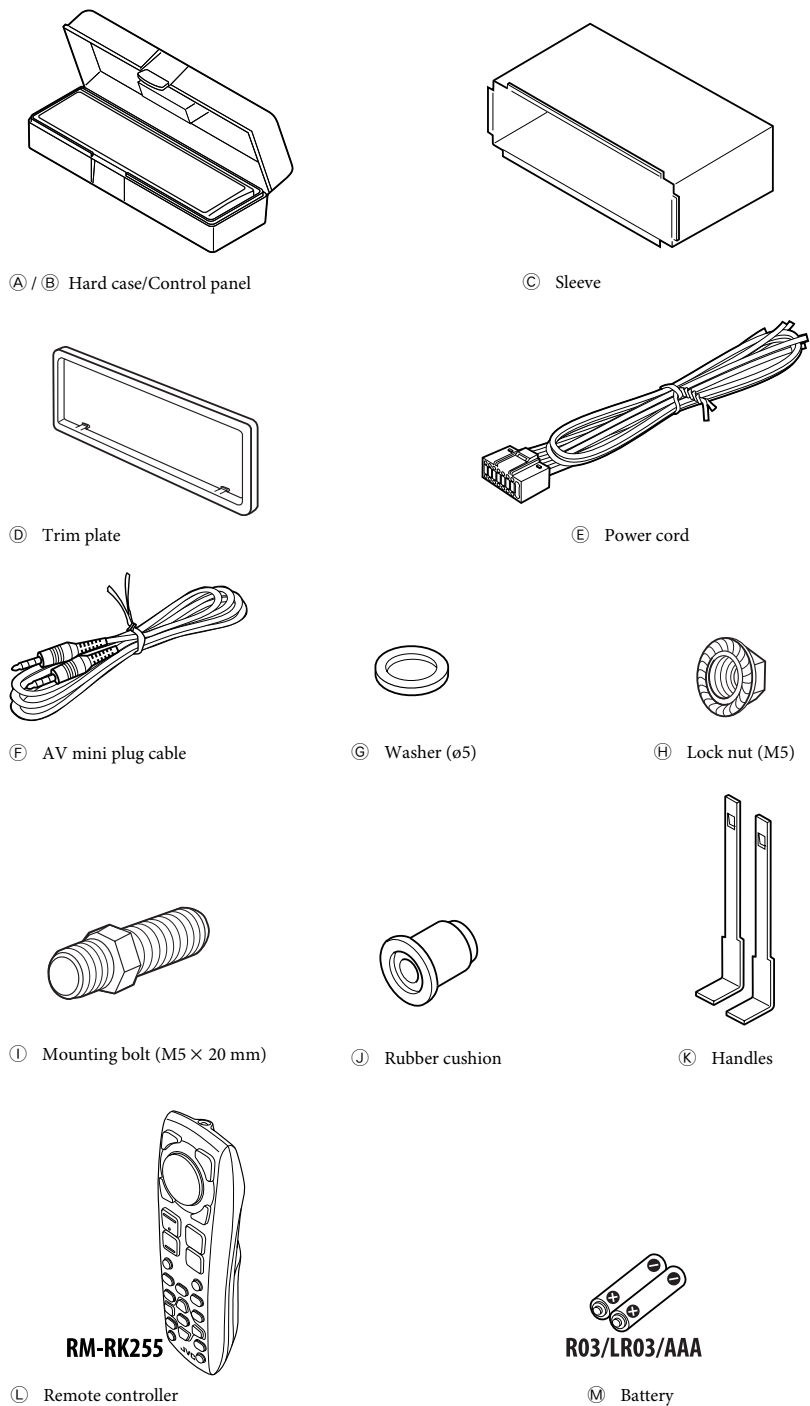
Notes:

- Replace the fuse with one of the specified rating. If the fuse blows frequently, consult your JVC car audio dealer.
- It is recommended to connect speakers with a maximum power of more than 50 W (both at the rear and at the front, with an impedance of **4 Ω to 8 Ω**). If the maximum power is less than 50 W, change <AMP GAIN> setting to prevent the speakers from being damaged (see page 39 of the INSTRUCTIONS).
- To prevent short circuits, cover the terminals of the UNUSED leads with insulating tape.
- The heat sink becomes very hot after use. Be careful not to touch it when removing this unit.



Parts list for installation and connection

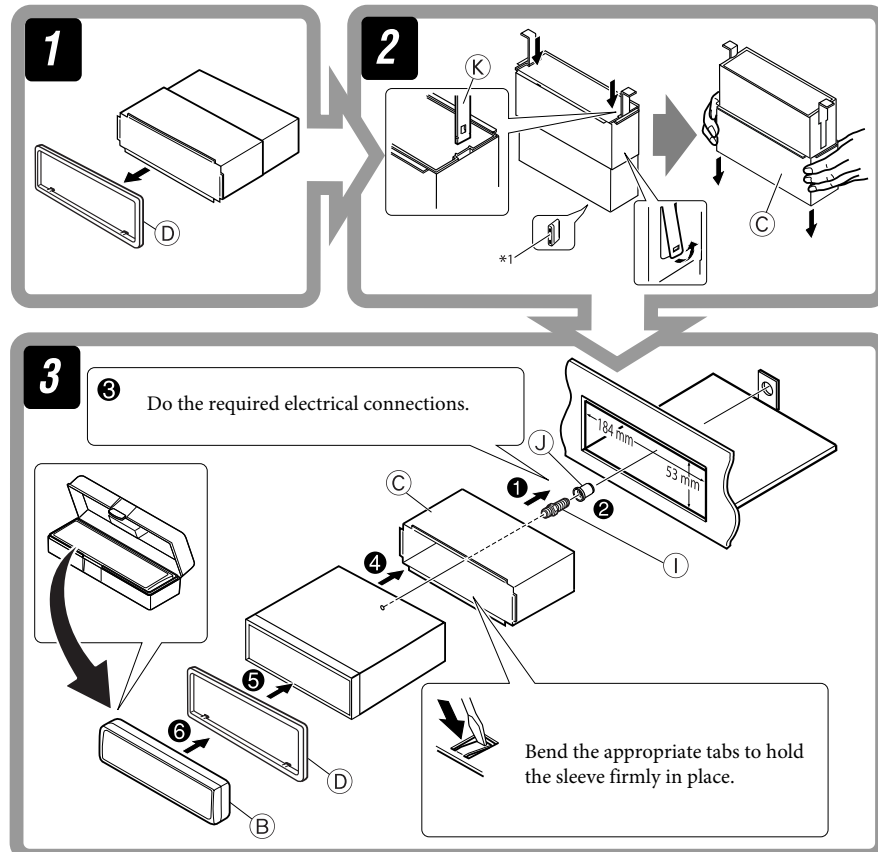
If any item is missing, consult your JVC car audio dealer immediately.



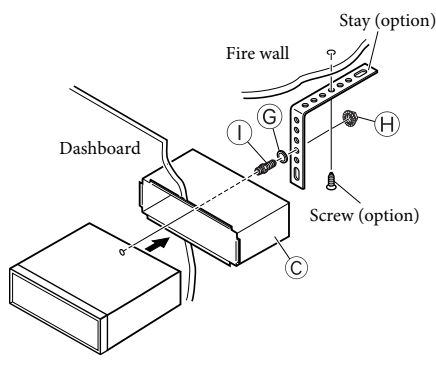
INSTALLATION (IN-DASH MOUNTING)

The following illustration shows a typical installation. If you have any questions or require information regarding installation kits, consult your JVC car audio dealer or a company supplying kits.

- If you are not sure how to install this unit correctly, have it installed by a qualified technician.



When using the optional stay

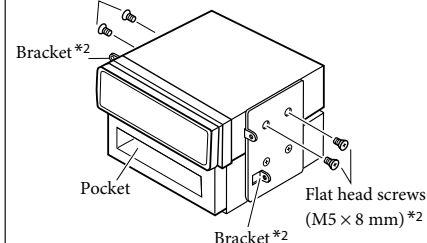


Install the unit at an angle of less than 30°.

When installing the unit without using the sleeve

In a Toyota car for example, first remove the car radio and install the unit in its place.

Flat head screws (M5 × 8 mm) *2

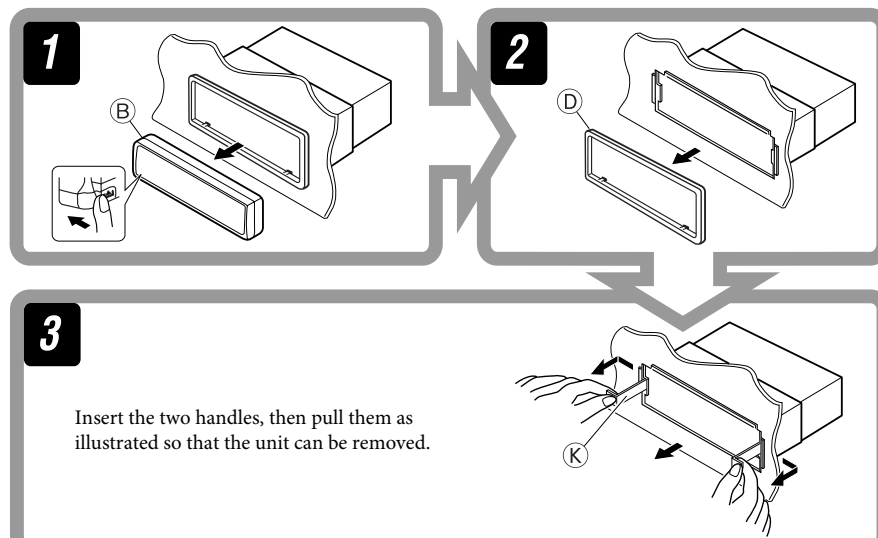


Note:

When installing the unit on the mounting bracket, make sure to use the 8 mm-long screws. If longer screws are used, they could damage the unit.

Removing the unit

Before removing the unit, release the rear section.



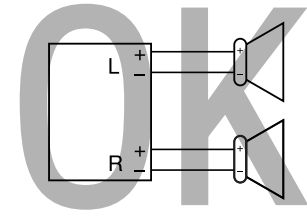
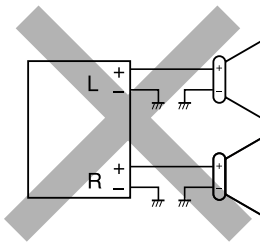
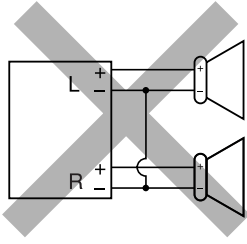
*1 When you stand the unit, be careful not to damage the fuse on the rear.

*2 Not supplied for this unit.

ELECTRICAL CONNECTIONS

PRECAUTIONS on power supply and speaker connections:

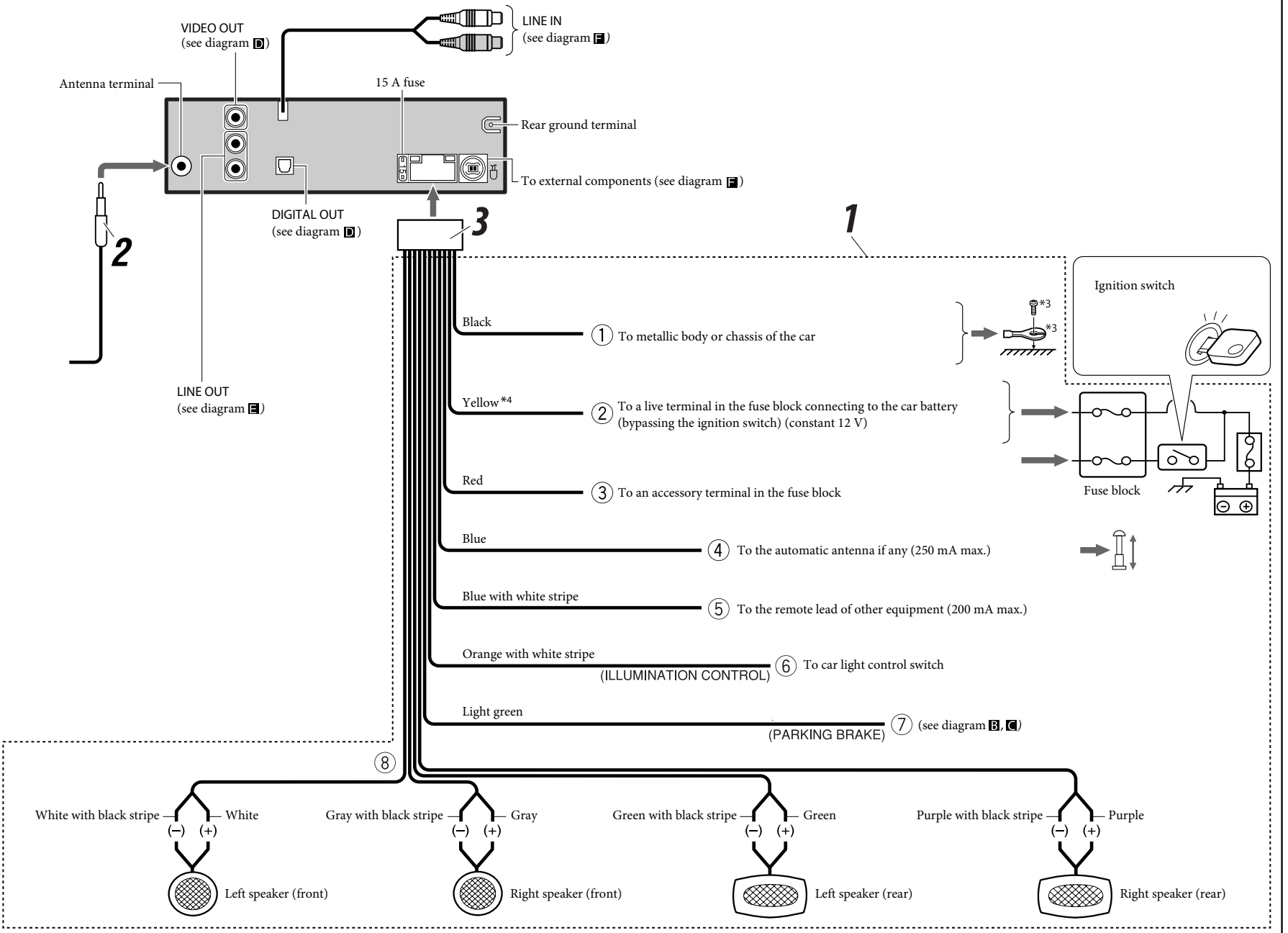
- **DO NOT connect the speaker leads of the power cord to the car battery; otherwise, the unit will be seriously damaged.**
- BEFORE connecting the speaker leads of the power cord to the speakers, check the speaker wiring in your car.



A Typical connections

Before connecting: Check the wiring in the vehicle carefully. Incorrect connection may cause serious damage to this unit. The leads of the power cord and those of the connector from the car body may be different in color.

- 1 Connect the colored leads of the power cord in the order specified in the illustration below.
- 2 Connect the antenna cord.
- 3 Finally connect the wiring harness to the unit.



*3 Not supplied for this unit.

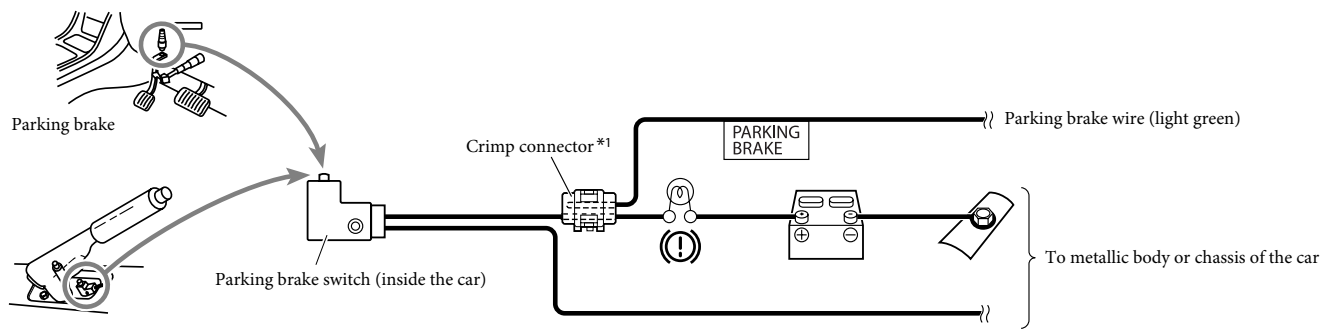
*4 Before checking the operation of this unit prior to installation, this lead must be connected, otherwise power cannot be turned on.

TROUBLESHOOTING

- **The fuse blows.**
 - * Are the red and black leads connected correctly?
- **Power cannot be turned on.**
 - * Is the yellow lead connected?
- **No sound from the speakers.**
 - * Is the speaker output lead short-circuited?
- **Sound is distorted.**
 - * Is the speaker output lead grounded?
 - * Are the “-” terminals of L and R speakers grounded in common?
- **Noise interfere with sounds.**
 - * Is the rear ground terminal connected to the car’s chassis using shorter and thicker cords?
- **This unit becomes hot.**
 - * Is the speaker output lead grounded?
 - * Are the “-” terminals of L and R speakers grounded in common?
- **This unit does not work at all.**
 - * Have you reset your unit?

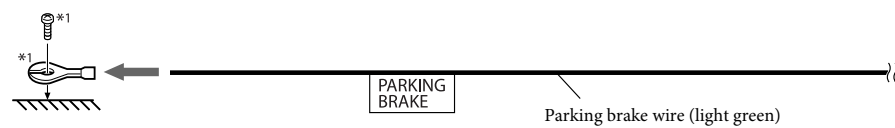
B Connecting the parking brake wire (When installing the monitor in a location where it **can** be seen by the driver)

Connect the parking brake wire to the parking brake system built in the car.

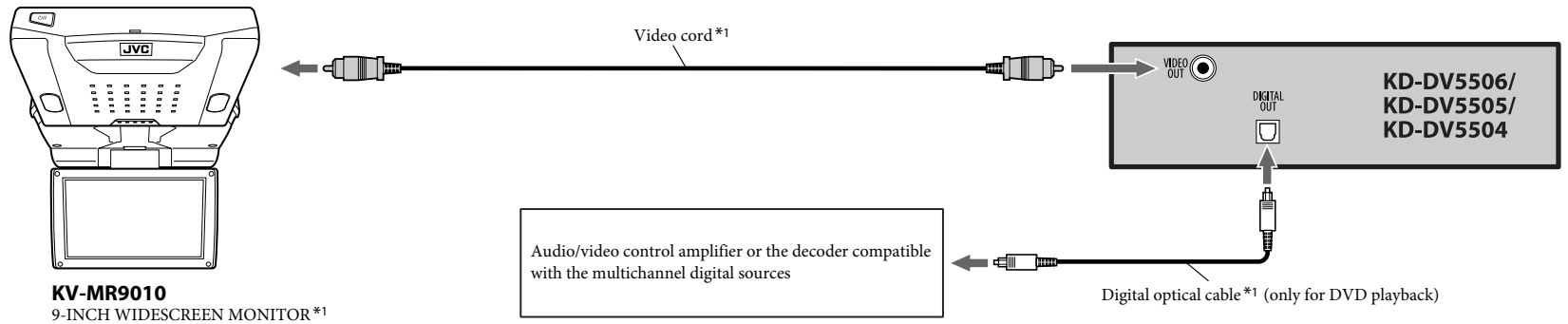


C Connecting the parking brake wire (When installing the monitor in a location where it **cannot** be seen by the driver)

Connect the parking brake wire to metallic body or chassis of the car.



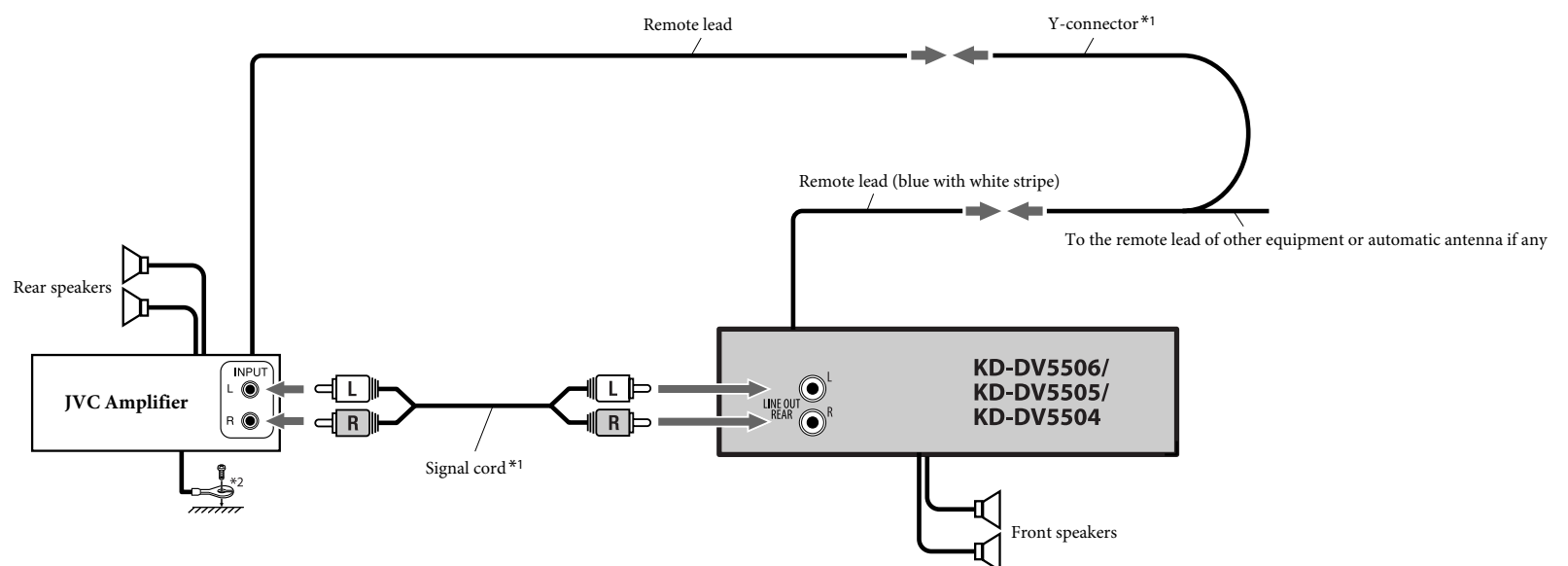
D Required connections for video playback



E Connecting the external amplifier

You can connect an amplifier to upgrade your car stereo system.

- Connect the remote lead (blue with white stripe) to the remote lead of the other equipment so that it can be controlled through this unit.
- **Disconnect the speakers from this unit, connect them to the amplifier. Leave the speaker leads of this unit unused.**



*1 Not supplied for this unit.

*2 Firmly attach the ground wire to the metallic body or to the chassis of the car—to the place uncoated with paint (if coated with paint, remove the paint before attaching the wire). Failure to do so may cause damage to the unit.

F Connecting the external components

When connecting the external components, refer also to the manuals supplied for the components and adapters.

CAUTION:

Before connecting the external components, make sure that the unit is turned off.

You can connect the following JVC components to the CD changer jack.

JVC component	Model name
CD changer (CD-CH)	CH-X1500, etc.

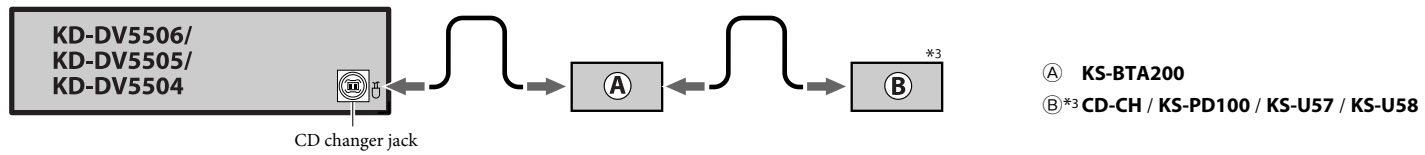
You can also connect the following components through the various JVC adapters.

- Connection cords may need to be purchased separately.

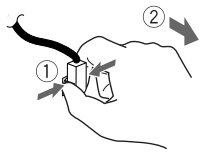
Component	Adapter	Model name
Bluetooth device	Bluetooth adapter	KS-BTA200
iPod	Interface adapter for iPod	KS-PD100
Portable audio player with line output jacks	Line input adapter	KS-U57
Portable audio player with 3.5 mm stereo mini jack	AUX input adapter	KS-U58

When connecting more than one component (maximum: two), it is recommended that you connect the components in series as explained below.

When connecting two components in series



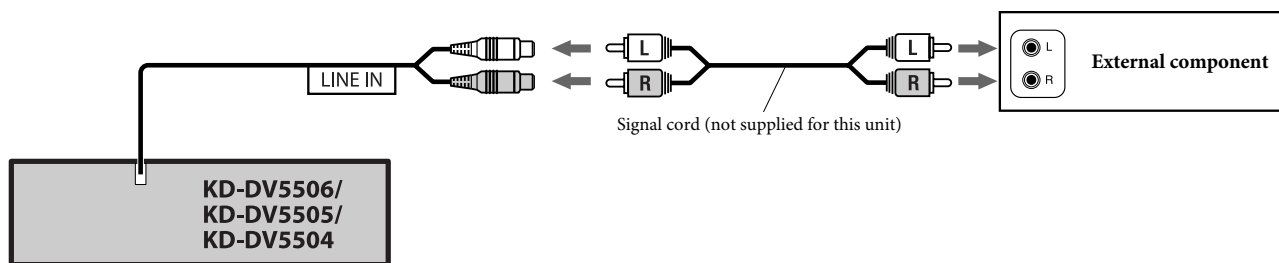
To disconnect the connector



Hold the connector tightly (①), then pull it out (②).

iPod is a trademark of Apple Inc., registered in the U.S. and other countries.

You can also connect an external component to the LINE IN plugs of the unit using a signal cord (not supplied).



^{*3} To use these components, set the external input setting correctly (see page 39 of the INSTRUCTIONS).