

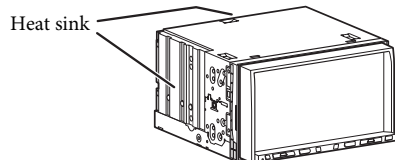
This unit is designed to operate on **12 V DC, NEGATIVE ground electrical systems**. If your vehicle does not have this system, a voltage inverter is required, which can be purchased at JVC car audio dealers.

WARNINGS

- DO NOT install any unit or wire any cable in a location where;
 - it may obstruct the steering wheel and gearshift lever operations, as this may result in a traffic accident.
 - it may obstruct the operation of safety devices such as air bags, as this may result in a fatal accident.
 - it may obstruct visibility.
- DO NOT operate any unit while manipulating the steering wheel, as this may result in a traffic accident.
- The driver must not watch the monitor while driving. It may lead to carelessness and cause an accident.
- If you need to operate the unit while driving, be sure to look around carefully or you may be involved in a traffic accident.
- If the parking brake is not engaged, "Parking Brake" flashes on the monitor, and no playback picture will be shown.
 - This warning appears only when the parking brake wire is connected to the parking brake system built in the car.

Notes on electrical connections:

- Replace the fuse with one of the specified rating. If the fuse blows frequently, consult your JVC car audio dealer.
- It is recommended to connect speakers with maximum power of more than 50 W (both at the rear and at the front, with an impedance of **4 Ω to 8 Ω**). If the maximum power is less than 50 W, change <Amplifier Gain> setting to prevent the speakers from being damaged (see page 20 of the INSTRUCTIONS).
- To prevent short circuits, cover the terminals of the UNUSED leads with insulating tape.
- The heat sink becomes very hot after use. Be careful not to touch it when removing this unit.
- At the time of installation, be sure to fix all wires (wires both from this unit and from the car itself) in a way that any wires cannot come into contact with heat sinks on the rear and side of the unit.

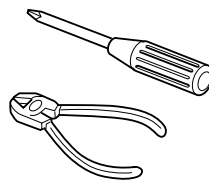
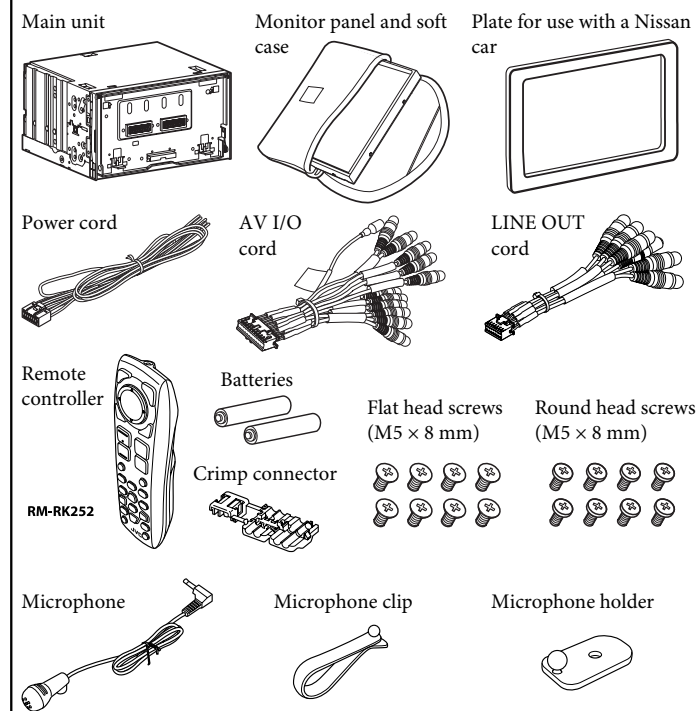


TROUBLESHOOTING

- **The fuse blows.**
 - * Are the red and black leads connected correctly?
- **Power cannot be turned on.**
 - * Is the yellow lead connected?
- **No sound from the speakers.**
 - * Is the speaker output lead short-circuited?
- **Sound is distorted.**
 - * Is the speaker output lead grounded?
 - * Are the "-" terminals of L and R speakers grounded in common?
- **Noise interfere with sounds.**
 - * Is the rear ground terminal connected to the car's chassis using shorter and thicker cords?
- **Unit becomes hot.**
 - * Is the speaker output lead grounded?
 - * Are the "-" terminals of L and R speakers grounded in common?
- **This unit does not work at all.**
 - * Have you reset your unit?

Parts list for installation and connection

The following parts are provided for this unit.
If anything is missing, contact your dealer immediately.



INSTALLATION (IN-DASH MOUNTING)

The following illustration shows a typical installation. However, you should make adjustments corresponding to your specific car. If you have any questions or require information regarding installation kits, consult your JVC car audio dealer or a company supplying kits.

- If you are not sure how to install this unit correctly, have it installed by a qualified technician.

Before installing the unit

- When mounting the unit, be sure to use the screws provided, as instructed. If other screws are used, parts could become loose or damaged.
- When tightening screws or bolts, be careful not to pinch any connection cord.
- Make sure not to block the fan on the rear to maintain proper ventilation when installing the unit.

1 Remove the audio system originally installed in the car, together with its mounting brackets.

Note: Be sure to keep all the screws and parts removed from your car for future use.

2 Attach the mounting brackets (removed from the car) to this unit (see below).

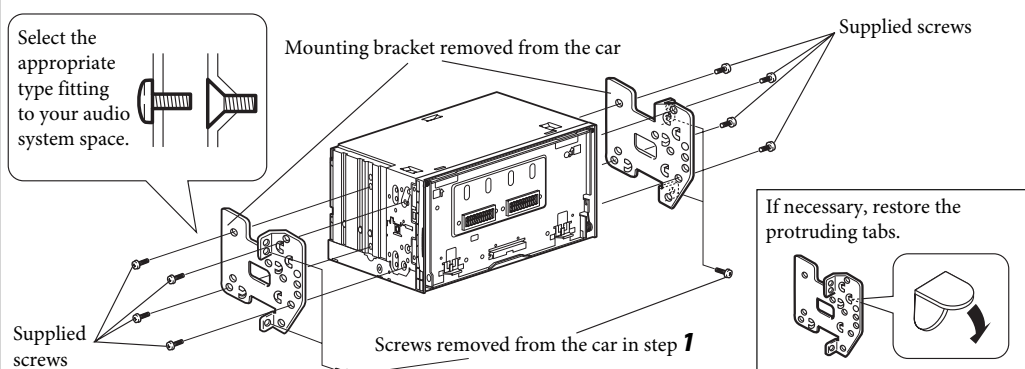
3 Do the required electrical connections.

- See "ELECTRICAL CONNECTIONS" on pages 1 and 2.

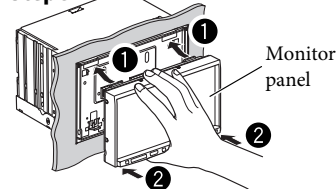
4 Install this unit using the screws removed in step **1**.

5 Attach the monitor panel (see below).

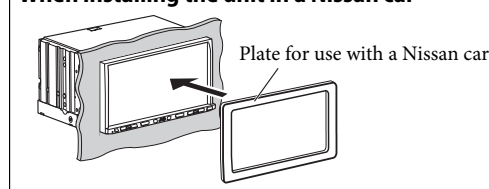
The following example is for installation in a Toyota car. For more details, consult your JVC car audio dealer.



Step 5

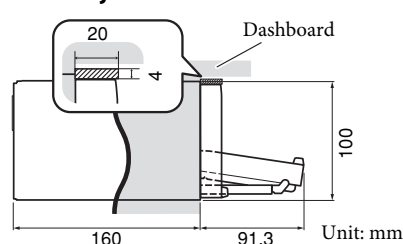


When installing the unit in a Nissan car

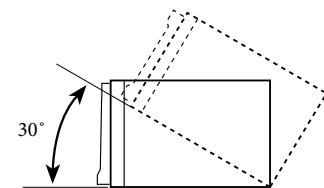


Note: When installing the unit on the mounting bracket, make sure to use the supplied screws (M5 x 8 mm). If longer screws are used, they could damage the unit.

Required space for installation and the monitor ejection



Install the unit at an angle of less than 30°, taking it into account that the monitor would eject when in use.



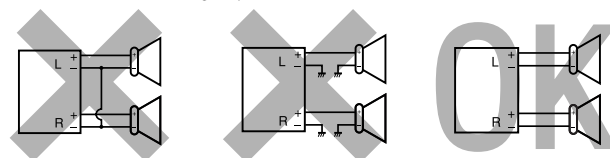
ELECTRICAL CONNECTIONS

To prevent short circuits, we recommend that you disconnect the battery's negative terminal and make all electrical connections before installing the unit.

- **Be sure to ground this unit to the car's chassis again after installation.**

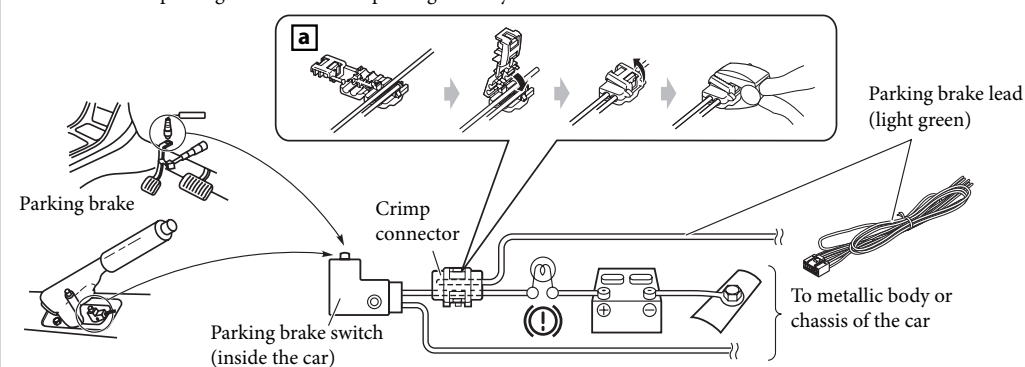
PRECAUTIONS on power supply and speaker connections:

- **DO NOT connect the speaker leads of the power cord to the car battery; otherwise, the unit will be seriously damaged.**
- BEFORE connecting the speaker leads of the power cord to the speakers, check the speaker wiring in your car.



A Connecting the parking brake lead

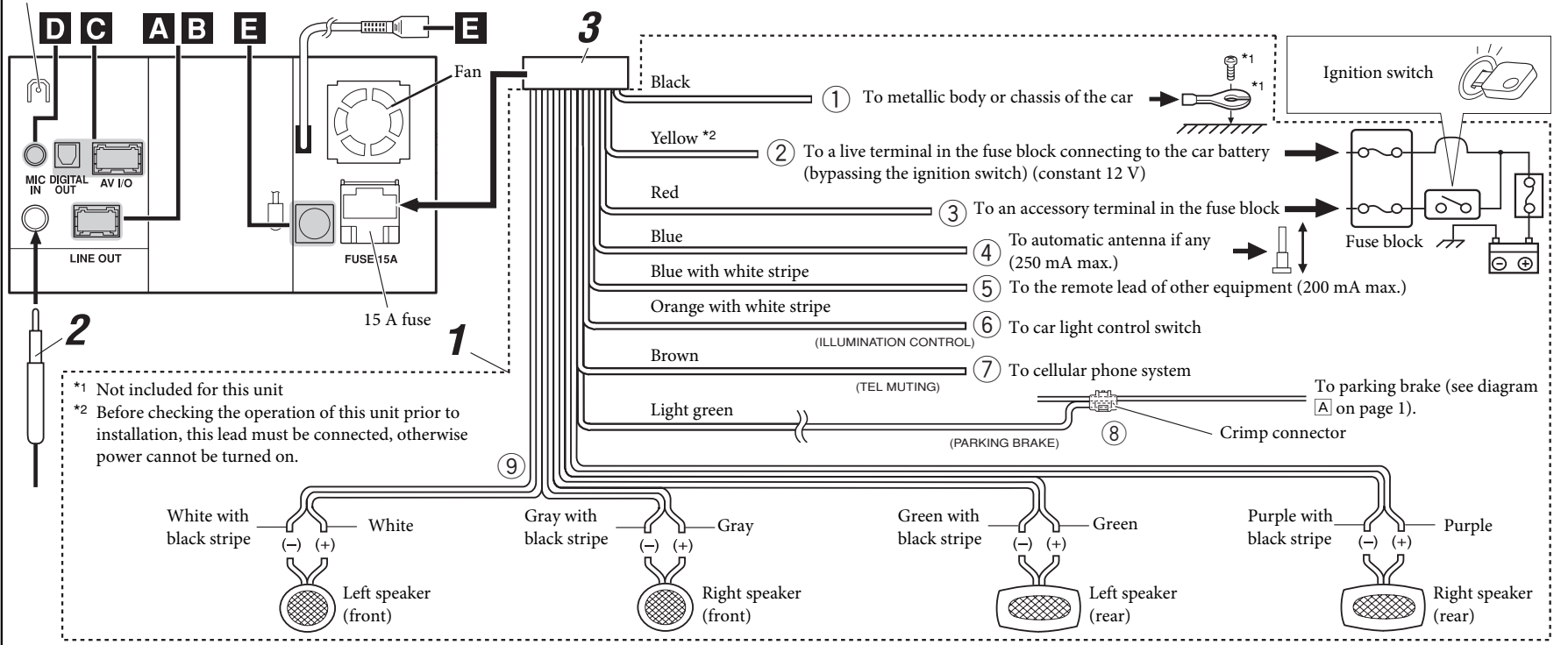
Connect the parking brake lead to the parking brake system built in the car.



Before connecting: Check the wiring in the vehicle carefully. Incorrect connection may cause serious damage to this unit. The leads of the power cord and those of the connector from the car body may be different in color.

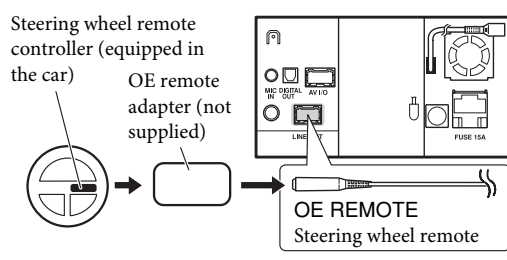
- 1 Connect the colored leads of the power cord in the order specified in the illustration below.
- 2 Connect the antenna cord.
- 3 Finally connect the wiring harness to the unit.

Rear ground terminal



A Connecting to the steering wheel remote controller

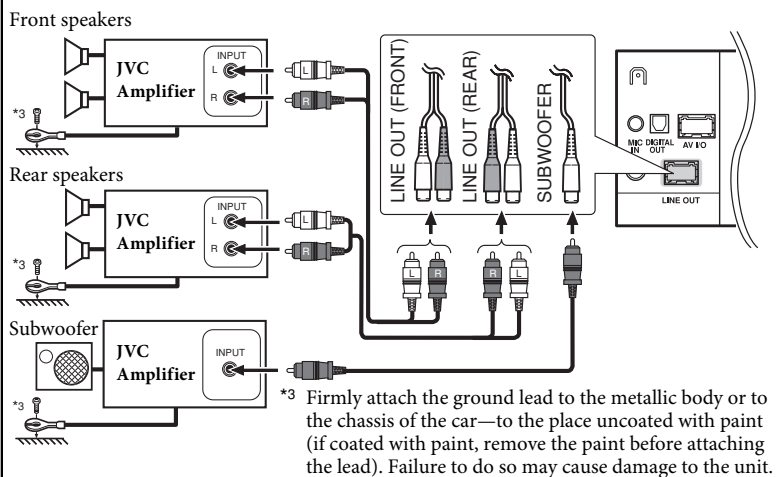
If your car is equipped with the steering wheel remote controller, you can operate this unit using the controller. For connection, an exclusive remote adapter (not supplied) which matches your car is required. For details, consult the same car audio dealer as where the unit is purchased.



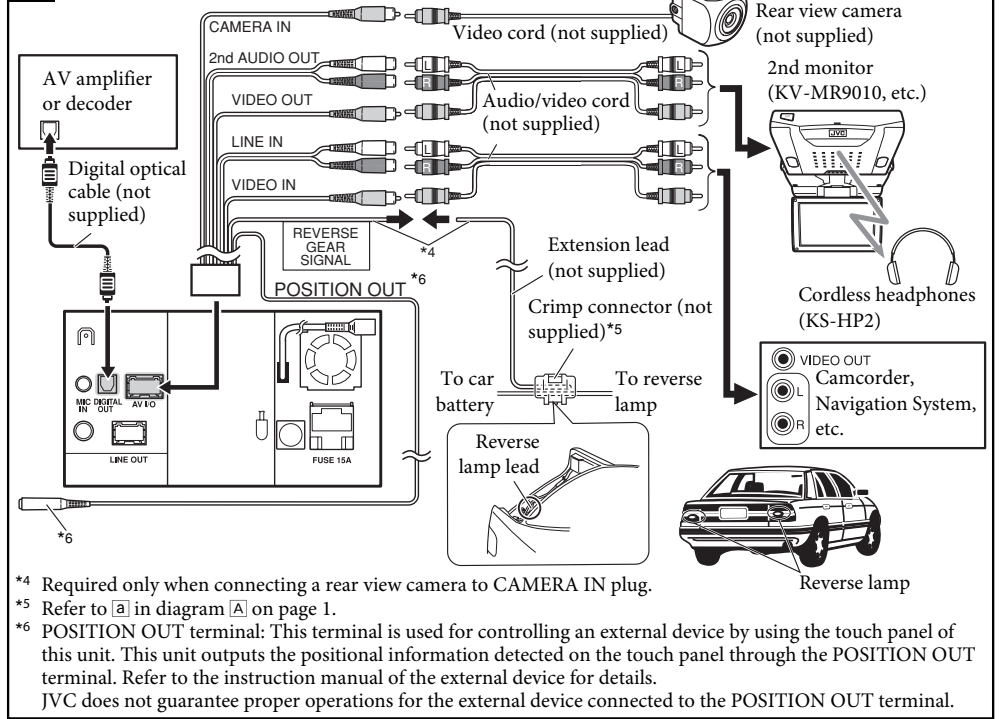
B Connecting the LINE OUT cord

You can connect amplifiers to upgrade surround system in the car compartment.

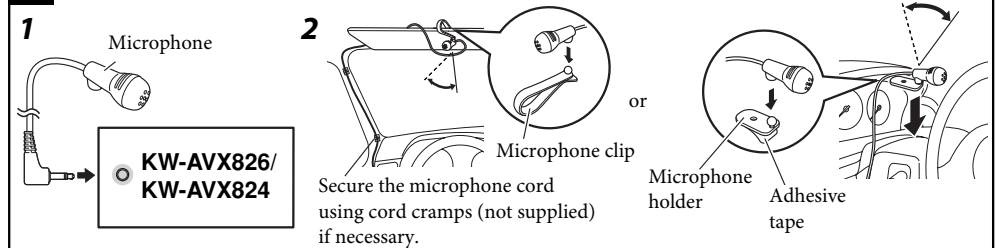
- You can supply the power to the amplifiers by connecting the remote leads (blue with white stripe) of this unit and amplifiers. (To connect more than one amplifier using the remote leads, Y-connectors need to be separately purchased.)
- Disconnect the speakers from the unit, and connect them to the amplifier. Leave the speaker leads of the unit unused.
- You can switch off the built-in amplifier and send the audio signals only to the external amplifier(s) to get clear sounds and to prevent internal heat built-up inside the unit. See page 20 of the INSTRUCTIONS.



C Connecting the AV I/O cord



D Connecting the microphone



E Connecting external components

When connecting the external components, refer also to the manuals supplied for the components and adapter.

CAUTION: Before connecting the external components, make sure that the unit is turned off.

You can connect the following JVC components to the CD changer jack.

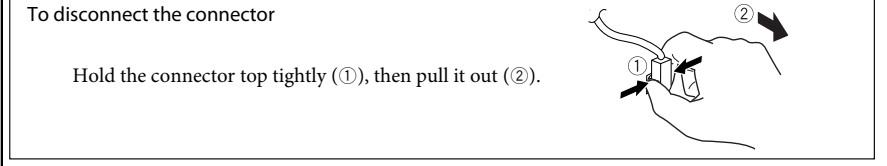
JVC component	Model name
CD changer (CD-CH)	CH-X1500, etc.

You can also connect the following components through the various JVC adapters.

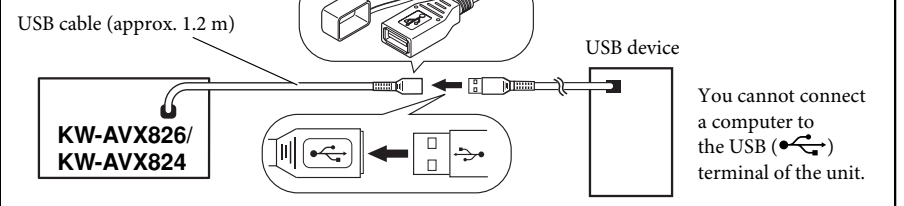
- Connection cords may need to be purchased separately.

Component	Adapter	Model name
iPod	Interface adapter for iPod	KS-PD100*7
Portable audio player with line output jacks	Line input adapter	KS-U57*7
Portable audio player with 3.5 mm stereo mini jack	AUX input adapter	KS-U58*7

*7 To use these components, set the external input setting correctly (see page 18 of the INSTRUCTIONS).



USB devices



Connecting the iPod or the iPhone to the USB terminal

