

# JVC

## WIDE LCD PANEL TV INSTRUCTIONS

ENGLISH

LT-19A1

© 2010 Victor Company of Japan, Limited



GGT0335-001B-H  
0510SCT-NF-MT

### Safety Precautions

Thank you for buying this JVC LCD panel television.  
To make sure you understand how to use your new TV, please read this manual thoroughly before you begin.

- Follow this manual regarding setup!**
  - Connect only to a 110-240 V, 50/60Hz AC outlet.
- Make enough room for inserting and removing the power plug!**
- Place the TV as close to the outlet as possible!**
  - The main power supply for this TV is controlled by inserting or removing the power plug.
- Never cut or damage the power cord!**
  - If the AC plug is not the right shape, or the power cord is not long enough, use an appropriate plug adapter or extension cable. (Consult your retailer)
- Unplug the power cord when going out!**
  - The power buttons on the remote control and the TV unit cannot completely turn off the TV. (Make appropriate arrangements for bedridden people.)
- Do not allow the TV to fall!**
  - Do not rest your elbows on, or allow children to hang from the TV.
  - There is a risk that the TV will fall and cause injuries.
  - Make use of the hole on the back of the stand to prevent the TV from falling easily.
- If the TV is damaged or behaving strangely, stop using it at once!**
  - Unplug the power cord and contact your retailer.
- Never place anything on the TV!**
  - Placing liquid, naked flames, cloths, paper, etc. on the TV may cause a fire.
- Never expose to rain or moisture!**
  - To prevent fire or electric shock, never allow liquids to enter the unit.
- Never insert objects into the cabinet openings!**
  - It may cause a fatal electric shock.
  - Take care when children are near.
- For more details on installation, usage and safety → Consult your retailer.**

### Care when setting

- Power requirements**
    - Connect the power cord only to a 110-240V, 50/60Hz AC outlet.
  - Installation requirements**
    - To avoid overheating, ensure the unit has ample room.
- 150 mm 50 mm 150 mm 50 mm
- 200 mm
- To prevent the TV from falling thread the belt through the hole on the back of the stand and secure it to the TV rack.
- Hole for belt
- Belt (not provided)
- Screw (not provided)

### Using the TV's Menu ----> Area - 2

<b>Picture Mode</b>	Select the picture as you like. (Standard / Soft / Bright)
<b>Backlight</b>	Darker <--> Brighter
<b>Brightness</b>	Lower <--> Higher
<b>Detail</b>	Darker <--> Brighter
<b>Color</b>	Softer <--> Sharper
<b>Tint</b>	Lighter <--> Deeper
<b>White Balance</b>	Reddish <--> Greenish *Only NTSC Select the white balance of the picture.
<b>Features</b>	(Cool / Mid / Warm) <b>Clear SD</b> For clearly picture (Off / Mode-1 / Mode-2) <b>Color Management</b> For natural - looking pictures. (Off / On) <b>Picture Management</b> Fix bright / dark pictures. (Off / On) <b>Color System</b> Select an appropriate colour system. (Auto / NTSC 3.58 / PAL-M / PAL-N) <b>Zoom</b> Change the aspect ratio. (Auto / Regular / 14:9 Zoom / 16:9 Zoom / 16:9 Zoom Subtitle / Full)
<b>MTS</b>	Select the stereo and SAP broadcasted programs. (Stereo / SAP / Mono)
<b>Sound</b>	<b>Weak</b> Weaker <--> Stronger <b>Treble</b> Weaker <--> Stronger <b>Surround</b> Ambient sound (Off / On) <b>Balance</b> Left Stronger <--> Right Stronger <b>AI Volume</b> Prevent sudden increase or decrease of sound. (Off / On)

### Viewing Teletext

You can watch the Teletext broadcast channel with Text Functions.

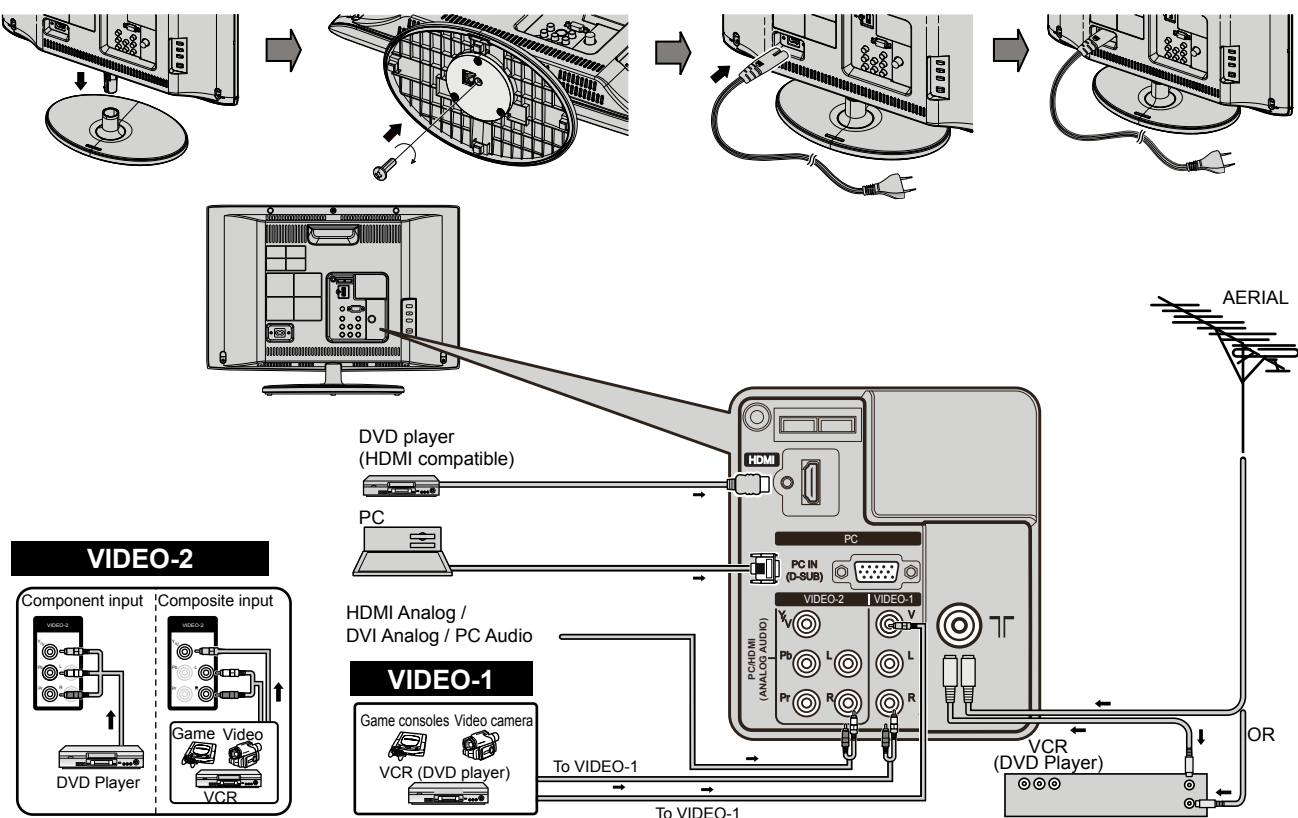
- TV mode <--> TEXT mode
  - Select a Teletext page by press number button (0-9).
    - \* Move up or down a page by CHANNEL +/-.
- List Mode : Book mark your favourite page.
- MODE (Red) (Green) (Yellow) (Blue) for select to save
- Press number button for enter the number of page.
- Recall your favourite page by press the colour button.
- Hold ⊕ : Hold the current page.  
Cancel by press this button again.
- Reveal ⊞ : Display hidden information.  
example : answer to a quiz, etc
- Size ⊕ : Double the size of the displayed text.
- Index ⊞ : Returns to page "100" or a previously designated page.
- Cancel ⊞ : Leave the current page open, while you switch to watch TV.  
\* Useful when running a page search.
- Sub-page ⊞ ⊞ : Display the number of Sub-page.  
\* Cancel by press this button again.

### Language group for Teletext

Group	Languages
Group-1	Turkish, Hungarian, English, German, French, Italian, Spanish, Portuguese, Greek, Swedish, Finnish
Group-2	Polish, Serbian, Croatian, Slovenian, Czech, Slovak, Rumanian, German, French
Group-3	Russian, Bulgarian, Lettish, Lithuanian, Estonian, Ukrainian, Serbian, Croatian, Slovenian, Czech, Slovak, English, German
Group-4	Arabic, Hungarian, English, German, French, Italian, Spanish, Portuguese, Swedish, Finnish
Group-5	Farsi, Hungarian, English, German, French, Italian, Swedish, Finnish

- If the characters are unreadable. ➡ Select different Teletext language group.

### Set Up and connections



### Remote control buttons and functions

1. Power On / Off

2. Colour buttons

3. Turn on "Clear SD"

4. Turn on "Zoom"

5. Turn on "Eco Mode"

6. To Teletext

7. Display on-screen menu

8. Operate the menu

9. To previous screen

10. Adjust Volume

11. View the Teletext

12. Change channel / Page / Hyper Scan

13. Channel information

14. Switch between TV / Video input

15. Return Plus / Return function

16. Turn the volume off / on

17. Change channel / page

18. Volume control / Turn off muting

When press and hold the button for 3 seconds, on-screen menu will be displayed.

To exit, press and hold the button again for 3 seconds.

Zoom : Change the aspect ratio

Hyper Scan :

Press and hold . PR changes without changing the picture screen. Once you release the button, the picture of the selected PR will appear.

Return Plus : Return to the frequently viewed channel.

Return Plus Programmed by select the frequently viewed channel then press and hold .

Return Plus Canceled by press and hold .

Return : Return to the previously viewed channel.

Insert the batteries

Use two "AAA/R03" dry cell batteries.

Insert the batteries from the ⊖ end, making sure the ⊖ and ⊕ polarities are correct.

"AAA/R03" Batteries

WARNING: Batteries shall not be exposed to excessive heat such as direct sunshine, fire or the like.

If this symbol is shown, it is only valid in the European Union.

### Troubleshooting

If a problem occurs when you are using the TV, check the below troubleshooting guide before calling for repair.

- Severe noise or snow**
  - Check the aerial cable and TV connections .
  - Check the direction of the aerial.
  - Check the aerial or its cable damaged or not.
- Patterns, stripes or noise**
  - Interference caused by devices such as an amplifier, personal computer, or a hair drier. Move it away from TV.
- Ghosting (Doubling of images)**
  - Interference occurs caused by signal reflection from mountains or building. Try to adjust the aerial's direction or use another antenna.
- Cannot turn it on**
  - Ensure the power cord is connected to the AC outlet correctly.
- Cannot operate the remote control.**
  - The batteries may be exhausted. Replace with new batteries.
  - Ensure that you are operation the remote control at less than 7 meters from the front of your TV.
- Remote control stops working**
  - Unplug TV, several minutes later plug it in again.
- Aspect ratio changed unintentionally**
  - Press " " button to return to your settings.
- PC screen alignment is off**
  - Adjust the "PC Position" in "PC Setting" of Set Up menu.
- Blue screen appears on the screen**
  - Switch "Blue Back" to "Off".
- Strange picture when using an external device**
  - If the top of the image is distorted, check the video signal quality itself. If movement appears unnatural when receiving a signal from a DVD player, etc. with 625p (progressive-scanning), change the output setting of the external device to 625i (interlace-scanning).
- Poor picture quality**
  - Unnatural colour >> Adjust "Colour" and "Backlight". Check "Colour System". If "Auto" is selected. Select the specific colour system manually.
- Poor sound**
  - Adjust the "Bass" and "Treble".
  - If receiving a poor signal in "Stereo/MI" switch to "Mono".
  - Adjust the channel reception using "Manual".
- For HDMI signal, wrong screen size.**
  - Switch "Size" in "HDMI Setting" to "1" or "2".
- For HDMI signal, green and distorted screen.**
  - Wait a little for the signal to stabilize when switching the signal format for an "HDMI" device.
- For HDMI signal, No picture / No sound**
  - Use the cable marked with HDMI logo.
  - Check if the device is compliant with HDMI.
  - Switch "Audio" in "HDMI Setting" to "Digital" or "Auto" for HDMI devices, or "Analogue" or "Auto" for DVI devices.
- Some functions do not work.**
  - It is not a malfunction. Some functions (dark background) in the menu do not work depending on the situation.
- Black or white dots appear on the screen.**
  - LCD panels use fine dots ("pixels") to display images. While more than 99.99% of these pixels function properly, a very small number of pixels may not light, or may light all the time. It is not a malfunction.

### Technical information

Sound and Colour system in your country or region			What is "Clear SD"	
Area	Country or Region	System	System	
Asia, Middle East	Bahrain, Kuwait, Oman, Qatar, United Arab Emirates, Yemen, Indonesia, Malaysia, Singapore, Thailand, India, etc.	B/G	PAL	
	China, Vietnam, etc.	D/K		
	Hong Kong, etc.	I		
Europe	Islamic Republic of Iran, Lebanon, Saudi Arabia, etc.	B/G	SECAM	
	Philippines, Taiwan, Myanmar, etc.	M	NTSC	
	Russia, etc.	D/K	SECAM	
Oceania	Czech Republic, Poland, etc.	D/K		
	Germany, Holland, Belgium, etc.	B/G	PAL	
	UK, etc.	I		
Africa	Australia, New Zealand, etc.	B/G	PAL	
	Republic of South Africa, etc.	I		
	Nigeria, etc.	B/G	PAL	
South America	Egypt, Morocco, etc.	B/G	SECAM	
	Argentina, Paraguay, Uruguay	N		
	Brazil	M	PAL	
	Chile, Peru, Bolivia, Colombia, Venezuela, Ecuador, etc.	M	NTSC	

PC Signals that can be displayed	
Resolution	640 x 480 (VGA) / 1024 x 768 (XGA)
Vertical frequency	60.0

- If the signal doesn't appear, check that the vertical frequency on the PC is set to "60Hz".

\* Machintosh\* computers are not supported.  
(Machintosh is a registered trademark of Apple Computer, Inc.)

### Initial Settings

- Turn on the TV.  
JVC logo appears  
• Show only when powering on for the first time.  
• The power on the unit can also be used.
- Select a language.  
JVC logo appears  
• The select the new Country Area after Initial Setting has completed.  
(While the cursor is pointing to Picture menu and hold for 3 seconds.)
- Select Country Area.  
Area-1 : Asia, Middle East, Europe, Oceania, Africa  
Area-2 : South America, Philippines
- Select the teletext language group.
- Automatically register channels (Auto Program).
- Check what was registered.

### Using the TV's Menu ----> Area - 1

Display MENU.

Picture Mode : Select the picture as you like.  
(Standard / Soft / Bright)

Backlight : Darker <--> Brighter

Contrast : Lower <--> Higher

Brightness : Darker <--> Brighter

Sharpness : Softer <--> Sharper

Colour : Lighter <--> Deeper

Tint : Reddish <--> Greenish \*Only NTSC

White Balance : Select the white balance of the picture.  
(Cool / Mid / Warm)

Features : Clear SD For clearly picture  
(Off / Mode-1 / Mode-2)  
For natural - looking pictures.  
(Off / On)  
Picture Management Fix bright / dark pictures.  
(Off / On)  
Colour Management Select an appropriate colour system.  
(Auto / PAL / SECAM / NTSC3.58 / NTSC 4.43 / PAL-M / PAL-N)  
Colour System Change the aspect ratio.  
(Auto / Regular / 14:9 Zoom / 16:9 Zoom / 16:9 Zoom Subtitle / Full)

Zoom : Select an appropriate colour system.  
(Auto / PAL / SECAM / NTSC3.58 / NTSC 4.43 / PAL-M / PAL-N)  
Change the aspect ratio.  
(Auto / Regular / 14:9 Zoom / 16:9 Zoom / 16:9 Zoom Subtitle / Full)

Picture Mode : Select the picture as you like.  
(Standard / Soft / Bright)

Backlight : Darker <--> Brighter

Contrast : Lower <--> Higher

Brightness : Darker <--> Brighter

Sharpness : Softer <--> Sharper

Colour : Lighter <--> Deeper

Tint : Reddish <--> Greenish \*Only NTSC

White Balance : Select the white balance of the picture.  
(Cool / Mid / Warm)

Features : Clear SD For clearly picture  
(Off / Mode-1 / Mode-2)  
For natural - looking pictures.  
(Off / On)  
Picture Management Fix bright / dark pictures.  
(Off / On)  
Colour Management Select an appropriate colour system.  
(Auto / PAL / SECAM / NTSC3.58 / NTSC 4.43 / PAL-M / PAL-N)  
Colour System Change the aspect ratio.  
(Auto / Regular / 14:9 Zoom / 16:9 Zoom / 16:9 Zoom Subtitle / Full)

Zoom : Select an appropriate colour system.  
(Auto / PAL / SECAM / NTSC3.58 / NTSC 4.43 / PAL-M / PAL-N)  
Change the aspect ratio.  
(Auto / Regular / 14:9 Zoom / 16:9 Zoom / 16:9 Zoom Subtitle / Full)

Picture Mode : Select the picture as you like.  
(Standard / Soft / Bright)

Backlight : Darker <--> Brighter

Contrast : Lower <--> Higher

Brightness : Darker <--> Brighter

Sharpness : Softer <--> Sharper

Colour : Lighter <--> Deeper

Tint : Reddish <--> Greenish \*Only NTSC

White Balance : Select the white balance of the picture.  
(Cool / Mid / Warm)

Features : Clear SD For clearly picture  
(Off / Mode-1 / Mode-2)  
For natural - looking pictures.  
(Off / On)  
Picture Management Fix bright / dark pictures.  
(Off / On)  
Colour Management Select an appropriate colour system.  
(Auto / PAL / SECAM / NTSC3.58 / NTSC 4.43 / PAL-M / PAL-N)  
Colour System Change the aspect ratio.  
(Auto / Regular / 14:9 Zoom / 16:9 Zoom / 16:9 Zoom Subtitle / Full)

Zoom : Select an appropriate colour system.  
(Auto / PAL / SECAM / NTSC3.58 / NTSC 4.43 / PAL-M / PAL-N)  
Change the aspect ratio.  
(Auto / Regular / 14:9 Zoom / 16:9 Zoom / 16:9 Zoom Subtitle / Full)

Picture Mode : Select the picture as you like.  
(Standard / Soft / Bright)

Backlight : Darker <--> Brighter

Contrast : Lower <--> Higher

Brightness : Darker <--> Brighter

Sharpness : Softer <--> Sharper

Colour : Lighter <--> Deeper

Tint : Reddish <--> Greenish \*Only NTSC

White Balance : Select the white balance of the picture.  
(Cool / Mid / Warm)

Features : Clear SD For clearly picture  
(Off / Mode-1 / Mode-2)  
For natural - looking pictures.  
(Off / On)  
Picture Management Fix bright / dark pictures.  
(Off / On)  
Colour Management Select an appropriate colour system.  
(Auto / PAL / SECAM / NTSC3.58 / NTSC 4.43 / PAL-M / PAL-N)  
Colour System Change the aspect ratio.  
(Auto / Regular / 14:9 Zoom / 16:9 Zoom / 16:9 Zoom Subtitle / Full)

Zoom : Select an appropriate colour system.  
(Auto / PAL / SECAM / NTSC3.58 / NTSC 4.43 / PAL-M / PAL-N)  
Change the aspect ratio.  
(Auto / Regular / 14:9 Zoom / 16:9 Zoom / 16:9 Zoom Subtitle / Full)

Picture Mode : Select the picture as you like.  
(Standard / Soft / Bright)

Backlight : Darker <--> Brighter

Contrast : Lower <--> Higher

Brightness : Darker <--> Brighter

Sharpness : Softer <--> Sharper

Colour : Lighter <--> Deeper

Tint : Reddish <--> Greenish \*Only NTSC

White Balance : Select the white balance of the picture.  
(Cool / Mid / Warm)

Features : Clear SD For clearly picture  
(Off / Mode-1 / Mode-2)  
For natural - looking pictures.  
(Off / On)  
Picture Management Fix bright / dark pictures.  
(Off / On)  
Colour Management Select an appropriate colour system.  
(Auto / PAL / SECAM / NTSC3.58 / NTSC 4.43 / PAL-M / PAL-N)  
Colour System Change the aspect ratio.  
(Auto / Regular / 14:9 Zoom / 16:9 Zoom / 16:9 Zoom Subtitle / Full)

Zoom : Select an appropriate colour system.  
(Auto / PAL / SECAM / NTSC3.58 / NTSC 4.43 / PAL-M / PAL-N)  
Change the aspect ratio.  
(Auto / Regular / 14:9 Zoom / 16:9 Zoom / 16:9 Zoom Subtitle / Full)

Picture Mode : Select the picture as you like.  
(Standard / Soft / Bright)

Backlight : Darker <--> Brighter

Contrast : Lower <--> Higher

Brightness : Darker <--> Brighter

Sharpness : Softer <--> Sharper

Colour : Lighter <--> Deeper

Tint : Reddish <--> Greenish \*Only NTSC

White Balance : Select the white balance of the picture.  
(Cool / Mid / Warm)

Features : Clear SD For clearly picture  
(Off / Mode-1 / Mode-2)  
For natural - looking pictures.  
(Off / On)  
Picture Management Fix bright / dark pictures.  
(Off / On)  
Colour Management Select an appropriate colour system.  
(Auto / PAL / SECAM / NTSC3.58 / NTSC 4.43 / PAL-M / PAL-N)  
Colour System Change the aspect ratio.  
(Auto / Regular / 14:9 Zoom / 16:9 Zoom / 16:9 Zoom Subtitle / Full)

Zoom : Select an appropriate colour system.  
(Auto / PAL / SECAM / NTSC3.58 / NTSC 4.43 / PAL-M / PAL-N)  
Change the aspect ratio.  
(Auto / Regular / 14:9 Zoom / 16:9 Zoom / 16:9 Zoom Subtitle / Full)

Picture Mode : Select the picture as you like.  
(Standard / Soft / Bright)

Backlight : Darker <--> Brighter

Contrast : Lower <--> Higher

Brightness : Darker <--> Brighter

Sharpness : Softer <--> Sharper

Colour : Lighter <--> Deeper

Tint : Reddish <--> Greenish \*Only NTSC

White Balance : Select the white balance of the picture.  
(Cool / Mid / Warm)

Features : Clear SD For clearly picture  
(Off / Mode-1 / Mode-2)  
For natural - looking pictures.  
(Off / On)  
Picture Management Fix bright / dark pictures.  
(Off / On)  
Colour Management Select an appropriate colour system.  
(Auto / PAL / SECAM / NTSC3.58 / NTSC 4.43 / PAL-M / PAL-N)  
Colour System Change the aspect ratio.  
(Auto / Regular / 14:9 Zoom / 16:9 Zoom / 16:9 Zoom Subtitle / Full)

Zoom : Select an appropriate colour system.  
(Auto / PAL / SECAM / NTSC3.58 / NTSC 4.43 / PAL-M / PAL-N)  
Change the aspect ratio.  
(Auto / Regular / 14:9 Zoom / 16:9 Zoom / 16:9 Zoom Subtitle / Full)

Picture Mode : Select the picture as you like.  
(Standard / Soft / Bright)

Backlight : Darker <--> Brighter

Contrast : Lower <--> Higher

Brightness : Darker <--> Brighter

Sharpness : Softer <--> Sharper

Colour : Lighter <--> Deeper

Tint : Reddish <--> Greenish \*Only NTSC

White Balance : Select the white balance of the picture.  
(Cool / Mid / Warm)

Features : Clear SD For clearly picture  
(Off / Mode-1 / Mode-2)  
For natural - looking pictures.  
(Off / On)  
Picture Management Fix bright / dark pictures.  
(Off / On)  
Colour Management Select an appropriate colour system.  
(Auto / PAL / SECAM / NTSC3.58 / NTSC 4.43 / PAL-M / PAL-N)  
Colour System Change the aspect ratio.  
(Auto / Regular / 14:9 Zoom / 16:9 Zoom / 16:9 Zoom Subtitle / Full)

Zoom : Select an appropriate colour system.  
(Auto / PAL / SECAM / NTSC3.58 / NTSC 4.43 / PAL-M / PAL-N)  
Change the aspect ratio.  
(Auto / Regular / 14:9 Zoom / 16:9 Zoom / 16:9 Zoom Subtitle / Full)

Picture Mode : Select the picture as you like.  
(Standard / Soft / Bright)

Backlight : Darker <--> Brighter

Contrast : Lower <--> Higher

Brightness : Darker <--> Brighter

Sharpness : Softer <--> Sharper

Colour : Lighter <--> Deeper

Tint : Reddish <--> Greenish \*Only NTSC

White Balance : Select the white balance of the picture.  
(Cool / Mid / Warm)

Features : Clear SD For clearly picture  
(Off / Mode-1 / Mode-2)  
For natural - looking pictures.  
(Off / On)  
Picture Management Fix bright / dark pictures.  
(Off / On)  
Colour Management Select an appropriate colour system.  
(Auto / PAL / SECAM / NTSC3.58 / NTSC 4.43 / PAL-M / PAL-N)  
Colour System Change the aspect ratio.  
(Auto / Regular / 14:9 Zoom / 16:9 Zoom / 16:9 Zoom Subtitle / Full)

Zoom : Select an appropriate colour system.  
(Auto / PAL / SECAM / NTSC3.58 / NTSC 4.43 / PAL-M / PAL-N)  
Change the aspect ratio.  
(Auto / Regular / 14:9 Zoom / 16:9 Zoom / 16:9 Zoom Subtitle / Full)

Picture Mode : Select the picture as you like.  
(Standard / Soft / Bright)

Backlight : Darker <--> Brighter

Contrast : Lower <--> Higher

Brightness : Darker <--> Brighter

Sharpness : Softer <--> Sharper

Colour : Lighter <--> Deeper

Tint : Reddish <--> Greenish \*Only NTSC

White Balance : Select the white balance of the picture.  
(Cool / Mid / Warm)

Features : Clear SD For clearly picture  
(Off / Mode-1 / Mode-2)  
For natural - looking pictures.  
(Off / On)  
Picture Management Fix bright / dark pictures.  
(Off / On)  
Colour Management Select an appropriate colour system.  
(Auto / PAL / SECAM / NTSC3.58 / NTSC 4.43 / PAL-M / PAL-N)  
Colour System Change the aspect ratio.  
(Auto / Regular / 14:9 Zoom / 16:9 Zoom / 16:9 Zoom Subtitle / Full)

Zoom : Select an appropriate colour system.  
(Auto / PAL / SECAM / NTSC3.58 / NTSC 4.43 / PAL-M / PAL-N)  
Change the aspect ratio.  
(Auto / Regular / 14:9 Zoom / 16:9 Zoom / 16:9 Zoom Subtitle / Full)

Picture Mode : Select the picture as you like.  
(Standard / Soft / Bright)

Backlight : Darker <--> Brighter

Contrast : Lower <--> Higher

Brightness : Darker <--> Brighter

Sharpness : Softer <--> Sharper

Colour : Lighter <--> Deeper

Tint : Reddish <--> Greenish \*Only NTSC

White Balance : Select the white balance of the picture.  
(Cool / Mid / Warm)

Features : Clear SD For clearly picture  
(Off / Mode-1 / Mode-2)  
For natural - looking pictures.  
(Off / On)  
Picture Management Fix bright / dark pictures.  
(Off / On)  
Colour Management Select an appropriate colour system.  
(Auto / PAL / SECAM / NTSC3.58 / NTSC 4.43 / PAL-M / PAL-N)  
Colour System Change the aspect ratio.  
(Auto / Regular / 14:9 Zoom / 16:9 Zoom / 16:9 Zoom Subtitle / Full)

Zoom : Select an appropriate colour system.  
(Auto / PAL / SECAM / NTSC3.58 / NTSC 4.43 / PAL-M / PAL-N)  
Change the aspect ratio.  
(Auto / Regular / 14:9 Zoom / 16:9 Zoom / 16:9 Zoom Subtitle / Full)

Picture Mode : Select the picture as you like.  
(Standard / Soft / Bright)

Backlight : Darker <--> Brighter

Contrast : Lower <--> Higher

Brightness : Darker <--> Brighter

Sharpness : Softer <--> Sharper

Colour : Lighter <--> Deeper

Tint : Reddish <--> Greenish \*Only NTSC

White Balance : Select the white balance of the picture.  
(Cool / Mid / Warm)

Features : Clear SD For clearly picture  
(Off / Mode-1 / Mode-2)  
For natural - looking pictures.  
(Off / On)  
Picture Management Fix bright / dark pictures.  
(Off / On)  
Colour Management Select an appropriate colour system.  
(Auto / PAL / SECAM / NTSC3.58 / NTSC 4.43 / PAL-M / PAL-N)  
Colour System Change the aspect ratio.  
(Auto / Regular / 14:9 Zoom / 16:9 Zoom / 16:9 Zoom Subtitle / Full)

Zoom : Select an appropriate colour system.  
(Auto / PAL / SECAM / NTSC3.58 / NTSC 4.43 / PAL-M / PAL-N)  
Change the aspect ratio.  
(Auto / Regular / 14:9 Zoom / 16:9 Zoom / 16:9 Zoom Subtitle / Full)

Picture Mode : Select the picture as you like.  
(Standard / Soft / Bright)

Backlight : Darker <--> Brighter

Contrast : Lower <--> Higher

Brightness : Darker <--> Brighter

Sharpness : Softer <--> Sharper

Colour : Lighter <--> Deeper

Tint : Reddish <--> Greenish \*Only NTSC

White Balance : Select the white balance of the picture.  
(Cool / Mid / Warm)

Features : Clear SD For clearly picture  
(Off / Mode-1 / Mode-2)  
For natural - looking pictures.  
(Off / On)  
Picture Management Fix bright / dark pictures.  
(Off / On)  
Colour Management Select an appropriate colour system.  
(Auto / PAL / SECAM / NTSC3.58 / NTSC 4.43 / PAL-M / PAL-N)  
Colour System Change the aspect ratio.  
(Auto / Regular / 14:9 Zoom / 16:9 Zoom / 16:9 Zoom Subtitle / Full)

Zoom : Select an appropriate colour system.  
(Auto / PAL / SECAM / NTSC3.58 / NTSC 4.43 / PAL-M / PAL-N)  
Change the aspect ratio.  
(Auto / Regular / 14:9 Zoom / 16:9 Zoom / 16:9 Zoom Subtitle / Full)

Picture Mode : Select the picture as you like.  
(Standard / Soft / Bright)

Backlight : Darker <--> Brighter

Contrast : Lower <--> Higher

Brightness : Darker <--> Brighter

Sharpness : Softer <--> Sharper

Colour : Lighter <--> Deeper

Tint : Reddish <--> Greenish \*Only NTSC

White Balance : Select the white balance of the picture.  
(Cool / Mid / Warm)

Features : Clear SD For clearly picture  
(Off / Mode-1 / Mode-2)  
For natural - looking pictures.  
(Off / On)  
Picture Management Fix bright / dark pictures.  
(Off / On)  
Colour Management Select an appropriate colour system.  
(Auto / PAL / SECAM / NTSC3.58 / NTSC 4.43 / PAL-M / PAL-N)  
Colour System Change the aspect ratio.  
(Auto / Regular / 14:9 Zoom / 16:9 Zoom / 16:9 Zoom Subtitle / Full)

Zoom : Select an appropriate colour system.  
(Auto / PAL / SECAM / NTSC3.58 / NTSC 4.43 / PAL-M / PAL-N)  
Change the aspect ratio.  
(Auto / Regular / 14:9 Zoom / 16:9 Zoom / 16:9 Zoom Subtitle / Full)

Picture Mode : Select the picture as you like.  
(Standard / Soft / Bright)

Backlight : Darker <--> Brighter

Contrast : Lower <--> Higher

Brightness : Darker <--> Brighter

Sharpness : Softer <--> Sharper

Colour : Lighter <--> Deeper

Tint : Reddish <--> Greenish \*Only NTSC

White Balance : Select the white balance of the picture.  
(Cool / Mid / Warm)

Features : Clear SD For clearly picture  
(Off / Mode-1 / Mode-2)  
For natural - looking pictures.  
(Off / On)  
Picture Management Fix bright / dark pictures.  
(Off / On)  
Colour Management Select an appropriate colour system.  
(Auto / PAL / SECAM / NTSC3.58 / NTSC 4.43 / PAL-M / PAL-N)  
Colour System Change the aspect ratio.  
(Auto / Regular / 14:9 Zoom / 16:9 Zoom / 16:9 Zoom Subtitle / Full)

Zoom : Select an appropriate colour system.  
(Auto / PAL / SECAM / NTSC3.58 / NTSC 4.43 / PAL-M / PAL-N)  
Change the aspect ratio.  
(Auto / Regular / 14:9 Zoom / 16:9 Zoom / 16:9 Zoom Subtitle / Full)

Picture Mode : Select the picture as you like.  
(Standard / Soft / Bright)

Backlight : Darker <--> Brighter

Contrast : Lower <--> Higher

Brightness : Darker <--> Brighter

Sharpness : Softer <--> Sharper

Colour : Lighter <--> Deeper

Tint : Reddish <--> Greenish \*Only NTSC

White Balance : Select the white balance of the picture.  
(Cool / Mid / Warm)

Features : Clear SD For clearly picture  
(Off / Mode-1 / Mode-2)  
For natural - looking pictures.  
(Off / On)  
Picture Management Fix bright / dark pictures.  
(Off / On)  
Colour Management Select an appropriate colour system.  
(Auto / PAL / SECAM / NTSC3.58 / NTSC 4.43 / PAL-M / PAL-N)  
Colour System Change the aspect ratio.  
(Auto / Regular / 14:9 Zoom / 16:9 Zoom / 16:9 Zoom Subtitle / Full)

Zoom : Select an appropriate colour system.  
(Auto / PAL / SECAM / NTSC3.58 / NTSC 4.43 / PAL-M / PAL-N)  
Change the aspect ratio.  
(Auto / Regular / 14:9 Zoom / 16:9 Zoom / 16:9 Zoom Subtitle / Full)

Picture Mode : Select the picture as you like.  
(Standard / Soft / Bright)

Backlight : Darker <--> Brighter

Contrast : Lower <--> Higher

Brightness : Darker <--> Brighter

Sharpness : Softer <--> Sharper

Colour : Lighter <--> Deeper

Tint : Reddish <--> Greenish \*Only NTSC

White Balance : Select the white balance of the picture.  
(Cool / Mid / Warm)

Features : Clear SD For clearly picture  
(Off / Mode-1 / Mode-2)  
For natural - looking pictures.  
(Off / On)  
Picture Management Fix bright / dark pictures.  
(Off / On)  
Colour Management Select an appropriate colour system.  
(Auto / PAL / SECAM / NTSC3.58 / NTSC 4.43 / PAL-M / PAL-N)  
Colour System Change the aspect ratio.  
(Auto / Regular / 14:9 Zoom / 16:9 Zoom / 16:9 Zoom Subtitle / Full)

Zoom : Select an appropriate colour system.  
(Auto / PAL / SECAM / NTSC3.58 / NTSC 4.43 / PAL-M / PAL-N)  
Change the aspect ratio.  
(Auto / Regular / 14:9 Zoom / 16:9 Zoom / 16:9 Zoom Subtitle / Full)

Picture Mode : Select the picture as you like.  
(Standard / Soft / Bright)

Backlight : Darker <--> Brighter

Contrast : Lower <--> Higher

Brightness : Darker <--> Brighter

Sharpness : Softer <--> Sharper

Colour : Lighter <--> Deeper

Tint : Reddish <--> Greenish \*Only NTSC

White Balance : Select the white balance of the picture.  
(Cool / Mid / Warm)

Features : Clear SD For clearly picture  
(Off / Mode-1 / Mode-2)  
For natural - looking pictures.  
(Off / On)  
Picture Management Fix bright / dark pictures.  
(Off / On)  
Colour Management Select an appropriate colour system.  
(Auto / PAL / SECAM / NTSC3.58 / NTSC 4.43 / PAL-M / PAL-N)  
Colour System Change the aspect ratio.  
(Auto / Regular / 14:9 Zoom / 16:9 Zoom / 16:9 Zoom Subtitle / Full)

Zoom : Select an appropriate colour system.  
(Auto / PAL / SECAM / NTSC3.58 / NTSC 4.43 / PAL-M / PAL-N)  
Change the aspect ratio.  
(Auto / Regular / 14:9 Zoom / 16:9 Zoom / 16:9 Zoom Subtitle / Full)

Picture Mode : Select the picture as you like.  
(Standard / Soft / Bright)

Backlight : Darker <--> Brighter