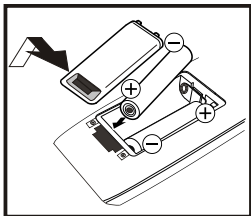
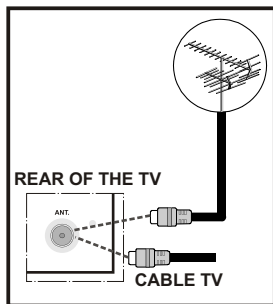


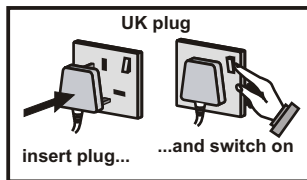
### 1 Insert the batteries into the handset



### 2 Connect the aerial straight to your TV

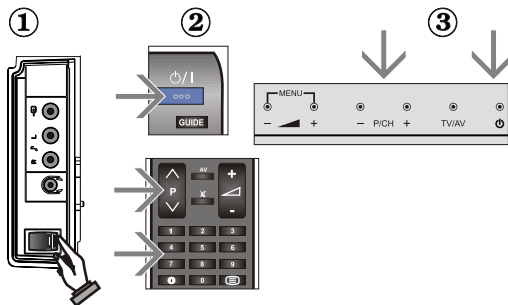


### 3 Connect the TV to the mains socket



### 4 To switch the TV on

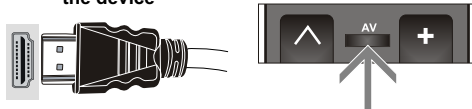
1. Switch the "O/I" button to position "I" so the TV will switch to standby mode.  
**To switch on the TV from standby mode either:**
2. Press the "O/I" button,  $\hat{P}$  /  $\hat{E}$  or a numeric button on the remote control.
3. Press the "O" button or  $\hat{P}/\hat{C}$  or  $\hat{P}/\hat{C}$  button on the TV. The TV will then switch on and the standby LED lights up.



### 6 HDMI input

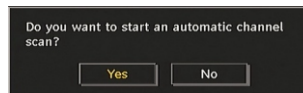
PLEASE ENSURE BOTH UNITS ARE SWITCHED OFF BEFORE CONNECTING. Use a HDMI to HDMI cable to connect the two units together. To select the HDMI input, press the **AV** button on the remote control.

To HDMI connection on the device

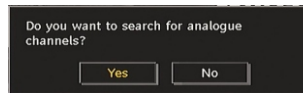


### 5 Start Auto Setup procedure

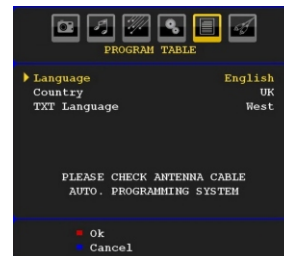
1. When the TV is turned on for the first time the "Welcome" message appears. Press **OK** button on the remote control. Then the "Installation" message will appear on the screen. Press OK button to start installation.



2. After Automatic search is complete, the following message asking for analogue channel search appears on screen.



3. Press OK button to start installation.



4. Check Language and then press OK.

