

JVC

INSTRUCTIONS

PORTABLE AUDIO SYSTEM RA-P1B

Made for
 iPod iPhone

iPod Compatibility Chart

iPod touch (2nd generation and Fall '09)
iPod touch
iPhone 3GS
iPhone 3G
iPhone
iPod classic
iPod video (5th Generation)
iPod photo (4th Generation)
iPod nano (5th Generation)
iPod nano (4th Generation)
iPod nano (3rd Generation)
iPod nano (2nd Generation)
iPod nano
iPod (4th Generation)
iPod mini (2nd Generation)
iPod mini

Thank you for purchasing a JVC product.

EN

LVT2122-004B [B]
0510KMMCREBET

©2010 Victor Company of Japan, Limited

Warnings, Cautions and Others

CAUTION:


- Do not block the ventilation openings or holes. (If the ventilation openings or holes are blocked by a newspaper or cloth, etc., the heat may not be able to get out.)
- Do not place any naked flame sources, such as lighted candles, on the apparatus.
- When discarding batteries, environmental problems must be considered and local rules or laws governing the disposal of these batteries must be followed strictly.
- Do not expose this apparatus to rain, moisture, dripping or splashing and that no objects filled with liquids, such as vases, shall be placed on the apparatus.

CAUTION

To reduce the risk of electrical, shocks, fire etc.:

- Do not remove screws, covers or cabinet.
- Do not expose this appliance to rain or moisture.

CAUTION

The  button in any position does not disconnect the mains line. Disconnect the mains plug to shut the power off completely. The MAINS plug or an appliance coupler is used as the disconnect device, the disconnect device shall remain readily operable.

Rating label is placed on the exterior of the bottom.

CAUTION

Battery shall not be exposed to excessive heat such as sunshine, fire or the like.

Dear Customer,

This apparatus is in conformance with the valid European directives and standards regarding electromagnetic compatibility and electrical safety.

European representative of Victor Company of Japan, Limited is:
JVC Technical Services Europe GmbH
Postfach 10 05 04
61145 Friedberg
Germany

NOTES on iPod

- This unit can only play the iPod audio. You can use the iPod video function and hear the audio but cannot play the video.
- Do not carry the System with iPod connected. You might drop it down or it might cause damages to the connector part.
- Do not touch or hit the iPod terminal pins or the connector pins directly. It might cause damages to the connector part.
- If the iPod does not play correctly, please update your iPod software to the latest version. - For details about updating your iPod, check on the Apple web site <<http://www.apple.com>>.
- JVC is not responsible for any loss of or damage to iPod that might result from the use of this product.
- Sound distortion may occur when playing back audio sources with high recording levels. When distortion occurs, it is recommended to turn off the equalizer of the iPod. For information on operating the iPod, see the iPod instruction manual.
- If you do not turn on the power of this unit and only connect the iPod to this unit, power may be supplied to the iPod.
- "Made for iPod" and "Made for iPhone" mean that an electronic accessory has been designed to connect specifically to iPod or iPhone, respectively, and has been certified by the developer to meet Apple performance standards. Apple is not responsible for the operation of this device or its compliance with safety and regulatory standards.
- iPhone, iPod, iPod classic, iPod nano, and iPod touch are trademarks of Apple Inc., registered in the U.S. and other countries.

IMPORTANT for the U.K.

DO NOT cut off the mains plug from this equipment. If the plug fitted is not suitable for the power points in your home or the cable is too short to reach a power point, then obtain an appropriate safety approved extension lead or consult your dealer.

BE SURE to replace the fuse only with an identical approved type, as originally fitted. If nonetheless the mains plug is cut off ensure to remove the fuse and dispose of the plug immediately, to avoid a possible shock hazard by inadvertent connection to the mains supply. If this product is not supplied fitted with a mains plug then follow the instructions given below:

IMPORTANT:

DO NOT make any connection to the terminal which is marked with the letter E or by the safety earth symbol or coloured green or green-and-yellow. The wires in the mains lead on this product are coloured in accordance with the following code:

- Blue: Neutral
- Brown: Live

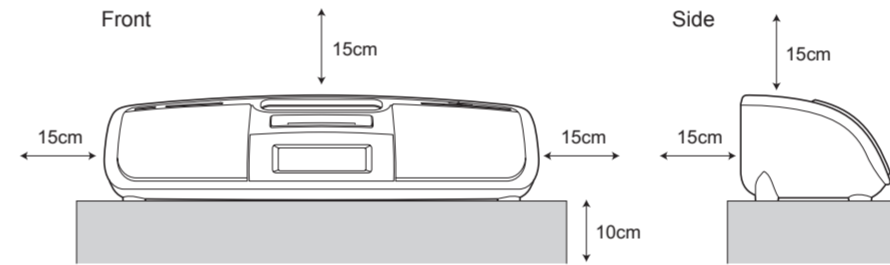
As these colours may not correspond with the coloured markings identifying the terminals in your plug proceed as follows: The wire which is coloured blue must be connected to the terminal which is marked with the letter N or coloured black. The wire which is coloured brown must be connected to the terminal which is marked with the letter L or coloured red.

IF IN DOUBT - CONSULT A COMPETENT ELECTRICIAN.

Caution: Proper Ventilation

To avoid risk of electric shock and fire, and to prevent damage, locate the apparatus as follows:

- Front: No obstructions and open spacing.
- Sides/ Top/ Back: No obstructions should be placed in the areas indicated by the dimensions in the illustration.
- Bottom: Place on the level surface. Maintain an adequate air path for ventilation by placing on a stand with a height of 10 cm or more.



Specifications

Model	RA-P1B	
Type	Portable audio system	
Amplifier	Power Output	2W + 2W 1 kHz 10 % THD, 4 Ω
Input Sensitivity/ Impedance	AUDIO IN	250 mV / 47 k Ω
Tuner	Tuning Range	87.50 MHz - 108.00 MHz
	Preset Stations	10
Speaker	1way full range, diameter 40 mm x 2	
Input Terminal	External DC IN (for AC adaptor) AUDIO IN (mini jack)	
iPod connector	Output Power : DC5 V $\bar{\bar{=}}$ 500 mA	
Power Source	DC 6 V $\bar{\bar{=}}$ 2 A (EXTERNAL DC IN) DC 6 V $\bar{\bar{=}}$ (SIZE R6, AA BATTERY OR EQUIVALENT x 4)	
Power Consumption	0.5 W (When not under load) / 1.00 W or less (in Standby mode) / 3.5 W (with iPod devices connected)	
AC adaptor	Input : AC 220 - 240 V $\bar{\bar{v}}$, 50 Hz 0.5A Output : DC 6 V $\bar{\bar{=}}$ 2 A	
Dimensions (W x H x D)	(W) 240 mm x (H) 58 mm x (D) 81 mm	
Weight (Without batteries)	0.35 kg	
Accessory	AC adaptor	

- Specifications and appearance are subject to change without prior notice.

SAFETY INSTRUCTIONS "SOME DOS AND DON'TS ON THE SAFE USE OF EQUIPMENT"

This equipment has been designed and manufactured to meet international safety standards but, like any electrical equipment, care must be taken if you are to obtain the best results and safety is to be assured.

Do read the operating instructions before you attempt to use the equipment.

Do ensure that all electrical connections (including the mains plug, extension leads and interconnections between pieces of equipment) are properly made and in accordance with the manufacturer's instructions. Switch off and withdraw the mains plug when making or changing connections.

Do consult your dealer if you are ever in doubt about the installation, operation or safety of your equipment.

Do be careful with glass panels or doors on equipment.

DON'T continue to operate the equipment if you are in any doubt about it working normally, or if it is damaged in any way—switch off, withdraw the mains plug and consult your dealer.

DON'T remove any fixed cover as this may expose dangerous voltages.

DON'T leave equipment switched on when it is unattended unless it is specifically stated that it is designed for unattended operation or has a standby mode.

Switch off using the switch on the equipment and make sure that your family know how to do this. Special arrangements may need to be made for infirm or handicapped people.

DON'T use equipment such as personal stereos or radios so that you are distracted from the requirements of traffic safety. It is illegal to watch television whilst driving.

DON'T listen to headphones at high volume as such use can permanently damage your hearing.

DON'T obstruct the ventilation of the equipment, for example with curtains or soft furnishings.

Overheating will cause damage and shorten the life of the equipment.

DON'T use makeshift stands and NEVER fix legs with wood screws—to ensure complete safety always fit the manufacturer's approved stand or legs with the fixings provided according to the instructions.

DON'T allow electrical equipment to be exposed to rain or moisture.

ABOVE ALL

- NEVER let anyone, especially children, push anything into holes, slots or any other opening in the case. — this could result in a fatal electrical shock.
- NEVER guess or take chances with electrical equipment of any kind—it is better to be safe than sorry!

Information for Users on Disposal of Old Equipment and Batteries



Products



Battery

Notice:
The sign Pb below the symbol for batteries indicates that this battery contains lead.

[European Union]

These symbols indicate that the electrical and electronic equipment and the battery with this symbol should not be disposed of as general household waste at its end-of-life. Instead, the products should be handed over to the applicable collection points for the recycling of electrical and electronic equipment as well as batteries for proper treatment, recovery and recycling in accordance with your national legislation and the Directive 2002/96/EC and 2006/66/EC.

By disposing of these products correctly, you will help to conserve natural resources and will help to prevent potential negative effects on the environment and human health which could otherwise be caused by inappropriate waste handling of these products.

For more information about collection points and recycling of these products, please contact your local municipal office, your household waste disposal service of the shop where you purchased the product.

Penalties may be applicable for incorrect disposal of this waste, in accordance with national legislation.

[Business users]

If you wish to dispose of this product, please visit our web page <http://www.jvc.eu> to obtain information about the take-back of the product.

[Other Countries outside the European Union]

These symbols are only valid in the European Union. If you wish to dispose of these items, please do so in accordance with applicable national legislation or other rules in your country for the treatment of old electrical and electronic equipment and batteries.

Troubleshooting

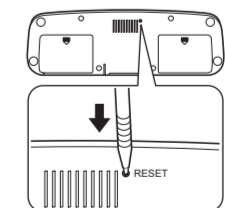
If you are having a problem with your System, check this list for a possible solution before calling for service.

In these cases	Check the following points
Power does not come on.	<ul style="list-style-type: none"> AC adaptor is not inserted securely. Plug in securely. The batteries are exhausted. Is the timer set? Turn off the alarm.
No longer works.	Press the RESET button (see "Resetting the unit" below).
Cannot set the iPod.	<ul style="list-style-type: none"> Is the Dock adaptor properly mounted on the unit? Make sure to mount the Dock adaptor properly.
Cannot operate iPod.	<ul style="list-style-type: none"> Is the iPod firmly connected to the connector plug of the unit? Is the iPod properly functioning? Test the iPod functions in stand alone condition.
iPod cannot be charged.	<ul style="list-style-type: none"> Is the iPod firmly connected to the connector plug of the unit? Is the AC adaptor connected? The iPod cannot be charged while the Unit is operated on batteries.
Hard to listen to broadcasts because of noise.	The FM antenna is not properly extended and positioned.
When the volume level is manually set higher than "16", the unit automatically lowers the level to "16".	The batteries run low. Replace the batteries with new ones, or use the AC adaptor.

Resetting the unit

If "Troubleshooting" does not eliminate malfunctioning (failure to operate or display properly, etc.), press the RESET button on the bottom of the unit with something having a sharp point, while the unit is turned on. After pressing RESET button, unplug the AC adaptor and wait a while before plugging it again.

- While resetting the unit, the clock is also reset. Adjust the clock after resetting the unit.



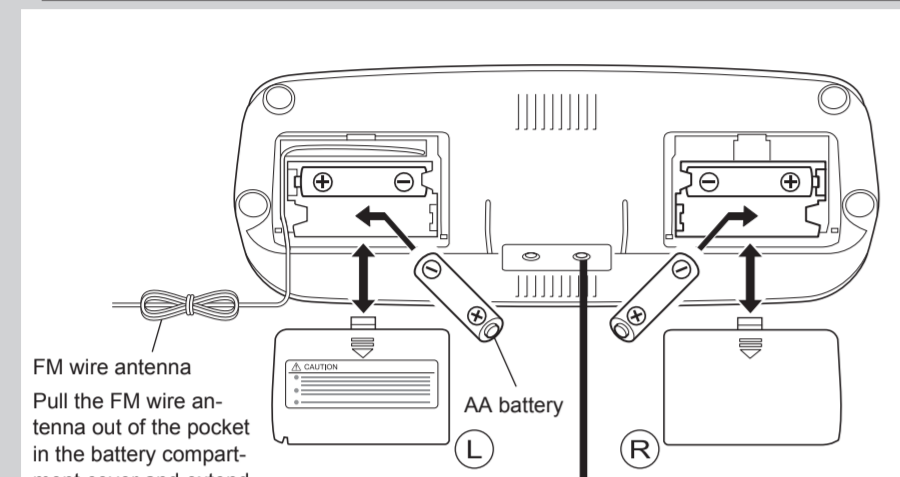
Preparation of the Unit

■ Setting the batteries / AC adaptor

This Unit runs on AA batteries or from the AC adaptor. To load batteries, open the covers of the battery compartments and insert AA batteries (not supplied) in the right and left compartments (four batteries total). Be sure to match the poles (+/-) correctly.

CAUTION

Read "Safety Precautions" on page 1 thoroughly in order to handle the dry batteries correctly.



◆ Connecting the AC adaptor

6V DC
AC 220 - 240 V, 50 Hz
AC adaptor (supplied)
RA-P1B : AA-R613

CAUTION

To avoid the risk of fire and to prevent damage,
· Do not use any AC adaptors other than the one supplied.
· Do not use the supplied AC adaptor for other equipment.

SNOOZE/BRIGHTNESS button

Pressing this button displays the current time.

- If you press and hold this button while the power is turned on, the display light turns on and off.
- Even if the power is not supplied to the Unit, the display is lit.

■ Setting the time

Set the time with the power off.

1 Press and hold the SOURCE button.

2 While the time display is flashing, press the SOURCE button.

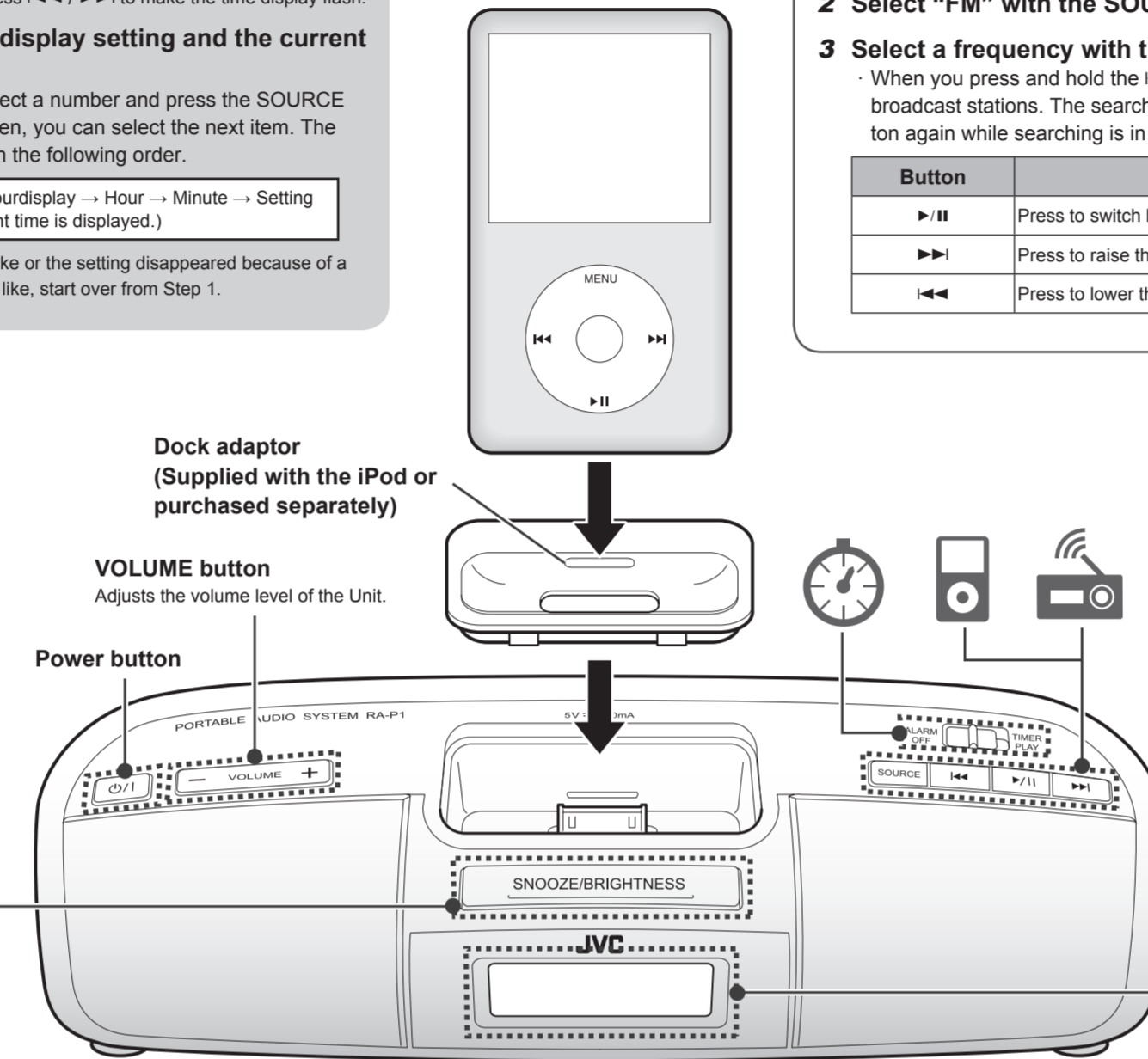
* If the display is flashing, press ◀▶ to make the time display flash.

3 Select the time display setting and the current time.

Use ◀▶ to select a number and press the SOURCE button to enter it. Then, you can select the next item. The items are switched in the following order.

24-hour display/12-hour display → Hour → Minute → Setting complete. (The current time is displayed.)

* If you made a mistake or the setting disappeared because of a power failure or the like, start over from Step 1.



Listening to FM Broadcasts

■ Listening to the radio

Extend the wire antenna to use it.

1 Turn on the power.

2 Select "FM" with the SOURCE button.

3 Select a frequency with the ◀▶ button.

· When you press and hold the ◀▶ button, the Unit automatically searches for broadcast stations. The search is finished when a signal is picked up. Press the button again while searching is in progress to quit the search.

Button	Function
▶/	Press to switch between the frequency and channel display.
▶▶	Press to raise the frequency or select a preset channel.
◀◀	Press to lower the frequency or selects a preset channel.

■ Registering broadcast station in preset channels (Presetting)

You can preset up to 10 preferred stations (P01 to P10).

1 Select "FM" with the SOURCE button.

2 Press the ▶/|| button.

A channel number is displayed.

3 Select your desired channel number with the ◀▶ button, and press and hold the ▶/|| button.

The channel number starts flashing.

4 While the channel number is flashing, use the ◀▶ button to select the frequency of the station that you wish to register and press the ▶/|| button.

The selected frequency will be registered in the selected channel.

* If you made a mistake or the setting disappeared because of a power failure or the like, start over from Step 1.

■ Listening to the channel of a broadcast station you registered

1 Press the ▶/|| button while "FM" is selected.

A channel number is displayed and the signal of the registered frequency is picked up.

2 Select a channel number with the ◀▶ button.

The signal of the frequency registered to the selected channel number is picked up.

■ About the Display Indications

Functions used	Displayed numbers, icons, etc.	Icon	Description
Volume level adjustment	00 to 32	🔊	Lights when the timer mode is selected.
iPod	iPod	📱	Flashes while the Unit is snoozing.
FM radio	FM 87.50 to 108.00 MHz (Frequencies) P01 to P10 (Channels)	📻	Audio in FM display: 00:00 AM/PM MHz
External device	Audio in 00 to 32 (Volume level)	🔊	
		🔋	Flashes when the remaining battery level is low.

Listening to / Charging the iPod

■ Listening to the iPod

1 Set the iPod in the Unit.

- Set the dock adaptor and then set the iPod.
- Securely insert the iPod all the way into the adaptor.
- * A terminal cover is covering the connector terminal when you purchase the Unit. Remove the cover before use.
- * If you do not connect the iPod, be sure to cover the connector terminal with the terminal cover. Dust or the like may infiltrate the Unit and cause malfunctions.
- * When you operate the iPod, support the iPod from the back side. Excessive force may damage the connector terminal.

2 Turn on the power.

When the iPod is selected as the audio source, it automatically starts playback.

3 Select "iPod" with the SOURCE button.

The Unit automatically starts playback.

Button	Function
▶/	Playback / Pause Press and hold this button to switch the iPod to the sleep mode.
▶▶	Next song / Fast forward (Press and hold.)
◀◀	Previous song (Press this button during playback to jump back to the beginning of the track.) / Fast rewind (Press and hold.)

Dock adaptor (Supplied with the iPod or purchased separately)

- You can remove the dock adaptor by pulling up the slot with your fingernail or a fine-tipped tool.
- Pay attention not to injure your fingertip or damage the connector.
- * If a dock adaptor was not supplied with your iPod, purchase a dock adaptor from Apple Inc. For details, visit Apple's website. <<http://www.apple.com/>>

■ Charging the iPod

1 Connect the AC adaptor to the Unit.

* The iPod battery is not charged while the Unit is operated on battery power supply.

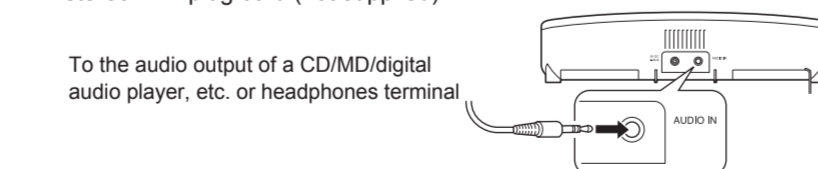
2 Set the iPod to the Unit.

- Charging starts.
- The iPod is charged while any function of the Unit is used.
- The iPod is charged while the Unit is turned off.
- * See the iPod instruction manual about charging times.

Listening to External Devices

1 Connect an external device to the Unit.

Connect the external device to the AUDIO IN jack on the rear of the unit using a stereo mini plug cord (not supplied).



2 Turn on the power.

3 Select "Audio in" with the SOURCE button.

4 Start playback from the external device.

Setting the Timer of the iPod, FM Radio or Buzzer

■ Setting the timer

Set the timer with the power off.

1 Press and hold the SOURCE button.

2 Use the ◀▶ button to display 🕒 and press the SOURCE button.

3 Select the time and so on when to start playback.

Use the ◀▶ button to select the setting and press the SOURCE button to enter it. Then, you can select the next item. The items are switched in the following order.

* If you made a mistake or the setting disappeared because of a power failure or the like, start over from Step 1.

[Playing back from the iPod]

Hour → Minute → Sound source (iPod) → Volume level when timer playback starts → Playback time → Setting complete. (The current time is displayed.)

- The last selected track is automatically played back.
- The playback time is set in 5-minute increments from 10 to 30 minutes.

[Receiving the signal from the FM radio]

Hour → Minute → Sound source (FM) → Channel is selected. → Volume level when timer playback starts → Playback time → Setting complete. (The current time is displayed.)

- The playback time is set in 5-minute increments from 10 to 30 minutes.
- * Register desired broadcast stations in preset channels in advance.

[Sounding buzzer]

Hour → Minute → Sound source (bb/ buzzer) → Setting complete. (The current time is displayed.)

- * You cannot set the volume level of the buzzer.
- * If you do not stop the buzzer, it keeps sounding for 3 minutes.

4 Switch the ALARM switch to "TIMER PLAY."

🕒 appears on the display.
* When the ALARM switch is switched to "TIMER PLAY", the Unit is locked with the power off.

■ Stopping Timer Playback

[Pausing timer playback (Snoozing function)]

Press the SNOOZE/BRIGHTNESS button during timer playback.

Timer playback stops temporarily but it restarts after 9 minutes. This operation repeats up to 6 time.

[Stopping the timer playback]

Press the power button during timer playback.

Timer playback stops and it restarts at the same time the next day.

■ Cancelling the timer

Switch the ALARM switch to "ALARM OFF."