



JVC

HOME THEATER SOUND SYSTEM

TH-BA1

—Consists of CA-THBA1 and SP-THBA1

DOLBY

DIGITAL

dts

Digital Surround

Thank you for purchasing a JVC product.

Before operation, please read the instructions carefully.

INSTRUCTIONS

GVT0289-015C[UX, A, US, UN]

0909WMKMDWJMM

EN

© 2009 Victor Company of Japan, Limited

CAUTION

To reduce the risk of electrical shocks, fire, etc.:

- Do not remove screws, covers or cabinet.
- Do not expose this appliance to rain or moisture.

CAUTION (CA-THBA1)

The button in any position does not disconnect the mains line. Disconnect the mains plug to shut the power off completely (the STANDBY lamp goes off). The MAINS plug or an appliance coupler is used as the disconnect device, the disconnect device shall remain readily operable.

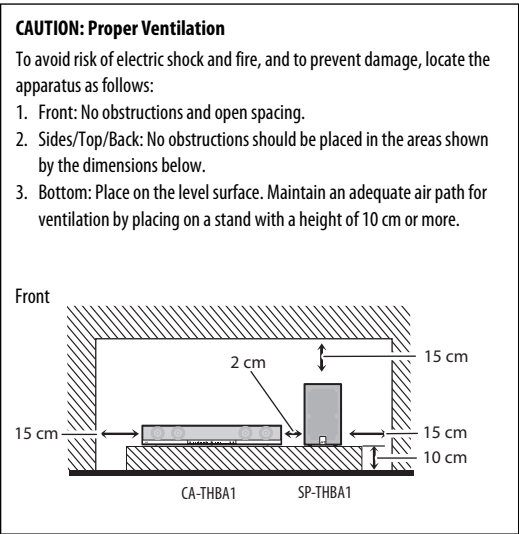
- When the System is on standby, the STANDBY lamp lights red.
- When the System is turned on, the STANDBY lamp goes off.

The power can be remote controlled.

CAUTION (SP-THBA1)

The power supply to the subwoofer is linked to the center unit. Disconnect the mains plug to shut the power off completely (the POWER ON lamp goes off). The MAINS plug or an appliance coupler is used as the disconnect device, the disconnect device shall remain readily operable.

- When the System is on standby, the STANDBY/ON lamp lights red.
- When the System is turned on, the STANDBY/ON lamp lights blue.

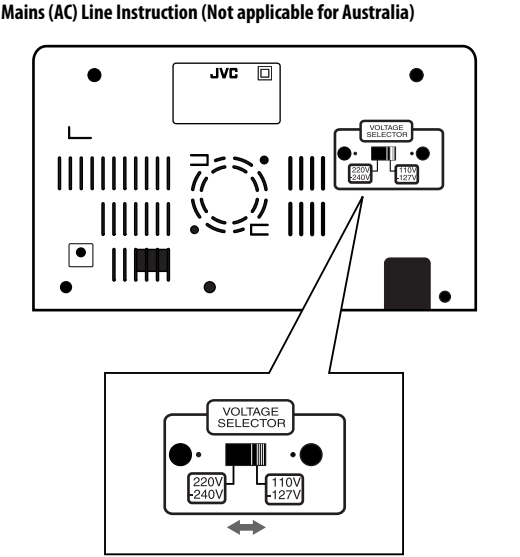


CAUTION

- Do not block the ventilation openings or holes. (If the ventilation openings or holes are blocked by a newspaper or cloth, etc., the heat may not be able to get out.)
- Do not place any naked flame sources, such as lighted candles, on the apparatus.
- When discarding batteries, environmental problems must be considered and local rules or laws governing the disposal of these batteries must be followed strictly.
- Do not expose this apparatus to rain, moisture, dripping or splashing and that no objects filled with liquids, such as vases, shall be placed on the apparatus.

CAUTION

Battery shall not be exposed to excessive heat such as sunshine, fire or the like.



CAUTION for mains (AC) line

BEFORE PLUGGING IN, do check that your mains (AC) line voltage corresponds with the position of the voltage selector switch provided on the outside of this equipment and, if different, reset the voltage selector switch, to prevent from a damage or risk of fire/electric shock.

Do not use another AC adaptor to connect this model.

For United Arab Emirates:

Include DWAM81

TRA REGISTERED

0019231/09

DEALER

0014517/08

No:

No:

GV40939-001A

[European Union only]

• Manufactured under license from Dolby Laboratories. Dolby, Pro Logic, and the double-D symbol are trademarks of Dolby Laboratories.

• Manufactured under license under U.S. Patent numbers: 5,451,942; 5,956,674; 5,974,380; 5,978,762; 6,487,535 and other U.S. and worldwide patents issued and pending. DTS and DTS Digital Surround are registered trademarks and the DTS logos and Symbol are trademarks of DTS, Inc. © 1996-2008 DTS, Inc. All Rights Reserved.

For Singapore:

Complies with
IDA Standards
DB102150

Introduction

Notes on handling

Important cautions

Installation of the System

- Select a place which is level, dry, and neither too hot nor too cold; between 5°C and 35°C.
- Leave sufficient distance between the System and the TV.
- Do not use the System in a location near heat sources, or in a place subject to direct sunlight, excessive dust, or vibration.
- Install the System in a location with adequate ventilation to prevent internal heat buildup.

Power cord

- Do not handle the power cord with wet hands.
- A small amount of power is always consumed while the power cord is connected to the wall outlet.
- Do not pull on the cord to unplug the power cord. When unplugging the power cord, always grasp and pull the plug so as not to damage the cord.

To prevent malfunctions of the System

- There are no user-serviceable parts inside. If anything goes wrong, unplug the power cord and consult your dealer.
- Do not insert any metallic objects or liquids into the System.

Safety precautions

Avoid moisture, water, and dust

Do not place the System in moist or dusty places.

Avoid high temperatures

Do not expose the System to direct sunlight and do not place it near any heating devices.

When you are away

When away on holiday or for other reasons for an extended period of time, disconnect the power cord from the wall outlet.

Do not block the vents

Blocking the vents may damage the System.

Care of the cabinet

- Stains on the System should be wiped off with a soft cloth. If the System is heavily stained, wipe it with a cloth soaked in water diluted neutral detergent and wrung well, then wipe clean with a dry cloth.
- Since the System may deteriorate in quality, become damaged or get its paint peeled off, be careful about the following:
 - DO NOT wipe it forcefully.
 - DO NOT wipe it with thinners, benzines or other organic solvents including disinfectants.
 - DO NOT apply any volatile substances such as insecticides to it.
 - DO NOT allow any rubber or plastic to remain in contact with it for a long time.
- Do not place anything on top of the System. Doing so may cause the System to fall, causing malfunctioning and/or injury.
- The manufacturer accepts absolutely no liability for any accidents or damage resulting from inadequate assembly or mounting, insufficient strength of attachment, misuse or abuse, or natural disasters.

If water gets inside the System

Turn the System off and disconnect the power cord from the wall outlet, then call the store where you purchased this System. Using the System in this condition may cause a fire or electrical shock.

Supplied accessories

Check to make sure you have all of the supplied accessories.

If anything is missing, contact your dealer immediately.

- Remote control RM-STHBA1A (× 1)
- AC adaptor (AA-R1902) (× 1)
- AC power cord (× 1)
- AC plug adaptor (× 2)
 - Not supplied for Australia and the Middle East.
- Lithium coin battery CR2025 (× 1)
 - The battery has been installed in the remote control when shipped from the factory.
- Core Filter (× 2)

Specifications

Center unit (CA-THBA1)

Output power

Center/ Front Surround: 120 W (30 W × 4) at 4 Ω (THD 10%)

Audio section

Analog Input ANALOG: 1 Vrms/50 kΩ
Digital Input* DIGITAL 1, DIGITAL 2: –21 dBm to –15 dBm (660 nm ±30 nm)

Speaker section

Type: Full-Range Bass-Reflex Type (Magnetically-Shielded Type)
8 cm cone × 4
Speaker: 30 W
Power Handling Capacity: 4 Ω
Impedance: 4 Ω
Frequency Range: Center Speakers: 84 Hz to 22 kHz
Front Speakers: 84 Hz to 22 kHz
Center Speakers: 82 dB/W•m
Front Speakers: 82 dB/W•m

Sound Pressure Level:

General

Power Source (DC IN): DC19 V 3.37 A
AC Adaptor (AA-R1902): Input: AC 110-240 V 1.5-0.9 A, 50/60 Hz
Output: DC19 V 3.37 A
Dimensions (W × H × D): 900 mm × 125 mm × 85 mm
Mass: 3.5 kg

Powered subwoofer (SP-THBA1)

Output power 100 W at 3 Ω (THD 10%)
Type: 1-Way Bass-Reflex Type
Speaker: 16 cm cone × 1
Power Handling Capacity: 100 W
Impedance: 3 Ω
Frequency Range: 45 Hz to 5 kHz
Sound Pressure Level: 82 dB/W•m
Power Requirements: AC 110 - 127 V/220 - 240 V , 50/60 Hz
Power Consumption: 30 W (during operation)
1.00 W or less (in Standby mode)
Dimensions (W × H × D): 215 mm × 352 mm × 254 mm
Mass: 5 kg

* Corresponding to Linear PCM, Dolby Digital, and DTS (with sampling frequency — 32 kHz, 44.1 kHz, 48 kHz)

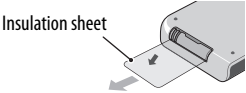
Designs & specifications are subject to change without notice.

Getting started

DO NOT connect the power cord until all other connections have been made.

Prepare the Remote Control

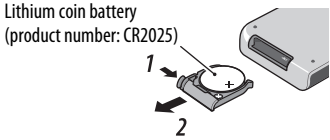
When you use the remote control for the first time, pull out the insulation sheet.



If the range or effectiveness of the remote control decreases, replace the battery.

To Replace the Battery in the Remote Control

Insert the battery into the remote control by matching the polarities (+ and –) correctly.



1 Pinch the side of the battery case.

2 Pull out the battery case and insert the battery by matching the polarities.

NOTE

- Store the battery in a place where children cannot reach. If a child accidentally swallows the battery, consult a doctor immediately.
- To prevent the battery from overheating, cracking, or starting a fire:
 - Do not recharge, short, disassemble or heat the battery, or dispose of it in a fire.
 - Do not leave the battery with other metallic materials.
 - Wrap the battery with tape and insulate when throwing away or saving it.
- Do not poke the battery with tweezers or similar tools.
- Dispose of the battery in the proper manner, according to federal, state, and local regulations.

CAUTION:

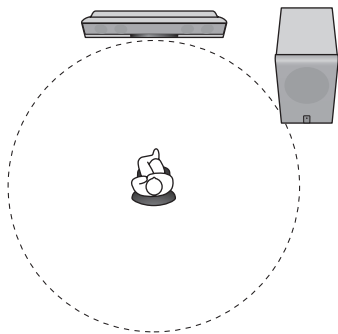
Danger of explosion if battery is incorrectly replaced. Replace only with the same or equivalent type.

Speaker layout

Install the speakers on a flat and level surface to ensure the best sound quality.

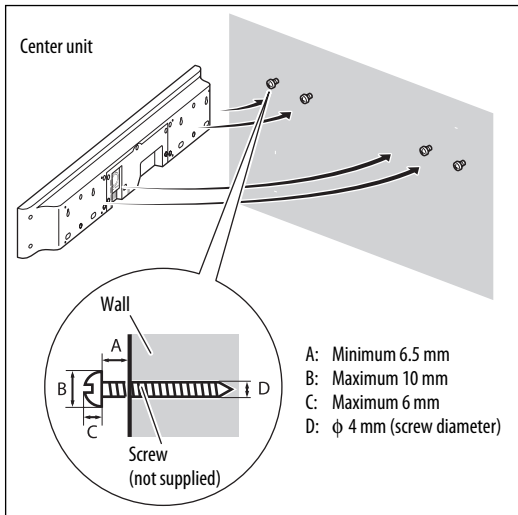
- The sound may be affected depending on the location in which you install them. To avoid such issues, change the location and orientation of the speakers.
- Install the speakers leaving an appropriate distance between them.
- If you install the speakers near the TV, color distortion may occur. To prevent this, turn off the TV's main power or unplug it before installing the speakers. Wait at least 30 minutes before turning on the TV's main power again.
- If the TV is still affected, move the speakers further away.

Typical installation



Installing on the wall

You can install the center unit on the wall.



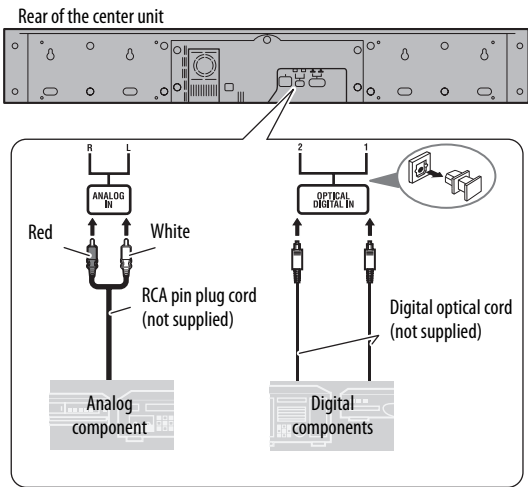
CAUTION

- The center unit weighs approximately 3.5 kg. Sufficient care must be taken when installing it on the wall to prevent any accidents caused by its falling off.
- Use screws which are compatible with the strength and material of the pillar or wall to prevent the center unit from falling off.

- Do not install the center unit onto a plywood or plasterboard wall; otherwise, it will fall and sustain damage.
- When installing the center unit on the wall;
 - Be sure to have them installed on the wall by qualified personnel.
 - Care must be taken when selecting a location for installation on the wall. Injury to personnel or damage to equipment may result if the installed unit interfere with daily activities.
 - AC adaptor should not be hanging/put above of any other items. It is acceptable to place the AC adaptor on the flat floor only.

Connecting external components

You can connect analog components to the ANALOG terminal and digital components to the DIGITAL 1 and DIGITAL 2 terminals.

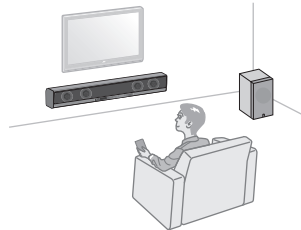


Selecting the voltage for your area (Not applicable for Australia)

Before connecting the AC power cord to a wall outlet, you must set the correct voltage for your area.

Slide the voltage selector on the powered subwoofer to the correct voltage for your area.

- Confirm that the position of the voltage selector corresponds to the voltage in your area.
- Do not connect the AC power cord to a wall outlet before setting the voltage selector on the powered subwoofer and completing all connections.



Connecting the power cord

Connect the supplied AC adaptor to the DC IN jack on the center unit. Then connect the supplied AC power cord to the AC adaptor, and plug it in a wall outlet.

- Plug in the power cord of the subwoofer to a wall outlet.

CAUTION

- Disconnect the power cords before cleaning or moving the speakers.

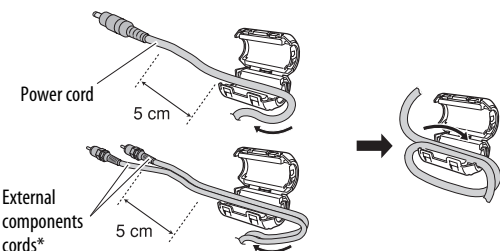
Using the core filter

Attach the provided core filter to the power cord and the external components cord, then the core filter reduces interference.

1 Release the stopper of the core filter.

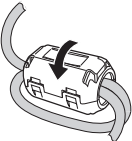


2 Run the cable through the core filter, and wind the cable firmly once inside the cutout of the core filter as shown in the illustration.



* You can wind 2 external components cords together.

3 Close the core filter until it clicks shut.



CAUTION

- Do not damage the cord by applying excessive force when winding.

Setting up the subwoofer

This System is equipped with a wireless subwoofer. When you use it for the first time, activate the wireless pairing.

Refer to the supplied information sheet—"Activate wireless pairing."

NOTE

- The wireless pairing is not canceled even after the AC plug has been pulled out.

Operations



Basic operation

Turning on/off the power

Press **⏻/I**.

- You can also use the power button on the front panel.

NOTE

- A small amount of power is consumed even when the power is turned off (standby mode). During standby mode, the **STANDBY** lamp on the front panel lights up. Unplug the power cord from the AC outlet to turn the power off completely.
- You can also turn on the System by pressing one of the input buttons (**DIGITAL 1**, **DIGITAL 2** or **ANALOG**).

Selecting the input source

Press one of the input buttons: **DIGITAL 1**, **DIGITAL 2** or **ANALOG**.

D1 (**DIGITAL 1**), **D2** (**DIGITAL 2**) or **AN** (**ANALOG**) appears on the display for 2 seconds.

- You can also use the input button on the front panel.

NOTE

- The indicator lamp of the selected input source lights.

Buttons and lamps on the front panel

- ⏻/I (power) button and STANDBY lamp**
Turns on/off the System.
 - STANDBY** lamp lights up while the System is turned off.
- Input button and input source indicator lamps**
Selects an input source: "DIGITAL 1," "DIGITAL 2" or "ANALOG."
 - The indicator lamp for the selected input source lights up.
- Surround button and surround indicator lamps**
Selects a surround mode: "SURROUND 1," "SURROUND 2" or SURROUND OFF.
 - The indicator lamp for the selected surround mode lights.
 - The **DOLBY PROLOGIC II** lamp lights up when:
 - surround is activated with an **ANALOG** input source selected.
 - surround is activated and a **DIGITAL** input source with 2 channel audio format.

Adjusting the volume

Press **VOLUME +/-** (0 to 40).

- You can also use the volume buttons on the front panel.

CAUTION

- Set the volume to the minimum level before starting any source. If the volume is set to a high level, the sudden blast of sound may damage your hearing and blow out the speakers.

Turning off the sound temporarily

Press **FADE MUTING**.

- To restore the sound, press the button again or adjust the volume.

Changing the display brightness

Press **DIMMER**.

Each time you press the button, the LED brightness changes as follows: normal ➡ dim ➡ off

Making sound clearer (Only for Dolby DIGITAL and DTS)

You can enjoy low level recorded sound clearly even at a low volume level—Dynamic Range Compression.

Press **DRC**.

Each time you press the button, the sound is enhanced the effect as follows: **OF**(off) ➡ **MD** (middle) ➡ **MX** (maximum)

Adjusting the output level of the speakers

You can adjust the output level within the range of –6 dB to +6 dB.

Press **SPK LEVEL +/-** for the corresponding speaker.

- SUBWOOFER:** Adjusts the output level of the subwoofer.
- CENTER:** Adjusts the output level of the center speakers.
- SURROUND:** Adjusts the output level of the front surround speakers.

Using the surround mode

You can listen to a more realistic sound than stereo sound using surround. Available surround modes are as follows:

- SURROUND 1:** Suitable for the reproduction of multi-channel sources. **S1** appears on the display when selected.
- SURROUND 2:** Suitable for the reproduction of any stereo music sources. **S2** appears on the display when selected.

- The indicator lamp of the selected mode lights.

Press **SURROUND MODE 1** or **SURROUND MODE 2**.

- To deactivate, press **OFF**. **OF** appears on the display.

Troubleshooting

If you have a problem with this System, check this list for a possible solution before calling for service.

POWER

Power does not come on.

- The power cord is not inserted securely. Plug it in securely.

REMOTE CONTROL

The remote control does not work.

- The battery is exhausted. Replace the battery.
- Sunlight is shining directly on the remote sensor. Hide the remote sensor from direct sunlight.
- The path between the remote control and the remote sensor on the front panel is blocked.
- Point the remote control at the remote sensor on the front panel.
- Signals cannot reach the remote sensor. Move closer to the unit.
- Pull out the insulation sheet.

SOUND

Sounds are sometimes interrupted.

- Radio wave connections may be interrupted. Change the location and orientation of the speakers.

No sound from speakers.

- The wireless connections have not been activated correctly. Check the connection.
- The sound has been turned off temporarily. Press **FADE MUTING** on the remote control or adjust the volume by pressing **VOLUME +/-**.

Radio wave reflections

The System is connected directly by radio waves which are reflected by walls, furniture and buildings. If the System cannot receive the waves properly, move the System to obtain better reception. Radio wave reception may also be interrupted by people moving between the units.