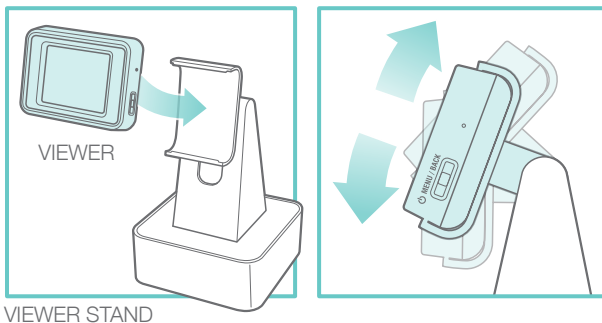


SET UP

Select a method to hold the Viewer

VIEWER STAND

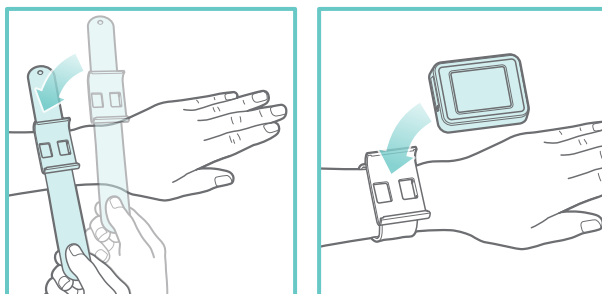
- Insert the VIEWER into the VIEWER STAND. Viewing angle is adjustable.



VIEWER STAND

SNAP WRIST BAND

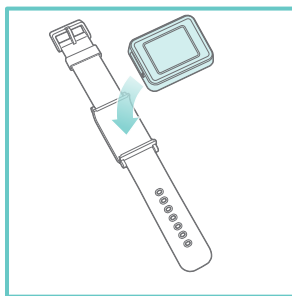
- Slap the SNAP WRIST BAND onto your wrist. Insert the VIEWER into the VIEWER CLIP.



SNAP WRIST BAND

WRIST WATCH BAND

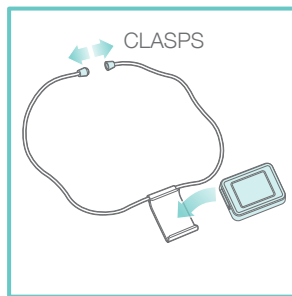
- Insert the VIEWER into the VIEWER CLIP.



WRIST WATCH BAND

NECKLACE

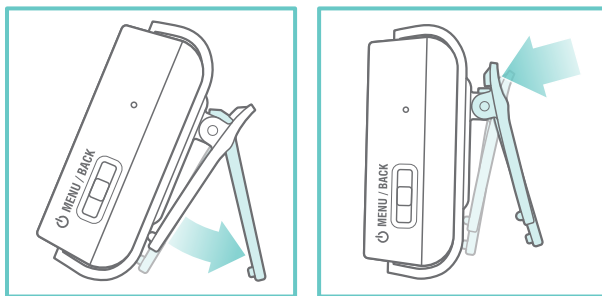
- Insert the VIEWER into the NECKLACE CLIP.
- Open the CLASPS, place around your neck and close the CLASPS.



NECKLACE

FRAMESTAND / BELT CLIP

- Insert the VIEWER into the FRAME/BELT CLIP.
- **FRAME** Open the FRAME STAND and set unit on flat surface.
- **BELT** Open the BELT CLIP and attach unit to BELT.



FRAME STAND

BELT CLIP

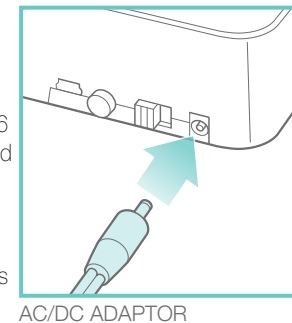
SET UP

Set up the Babywatch 2.0 Camera

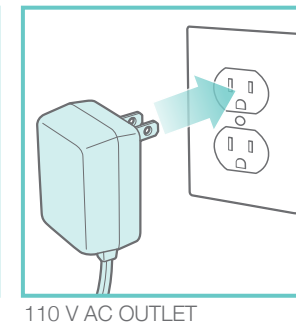
AC/DC ADAPTOR

WARNING Never place camera or cords within 3 feet of the crib.

- Secure the cord to the wall using the 6 ELECTRICAL CORD HOLDER included to keep cord away from the baby's reach.
- Plug the AC/DC ADAPTOR into the back of the BABYWATCH CAMERA as shown.
- Plug the other end into a 110V AC outlet.



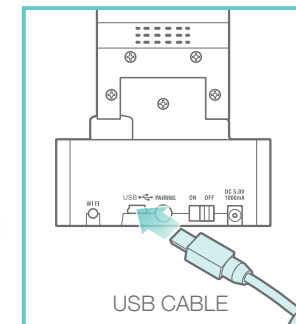
AC/DC ADAPTOR



110 V AC OUTLET

WI-FI AND WEBSITE SET UP

- Move the ON/OFF Switch on Babywatch camera to ON position.
- Plug the USB CABLE into the USB PORT on the back of the CAMERA.
- Plug the other end into your computer. Click on the FLASH DRIVE ICON.
- For Macintosh, Open the SET UP ICON in the MacOSX directory and follow the directions.
- For Windows, Open the SET UP ICON in the MS Windows directory and follow the directions.
- For more detail, please go to the website "www.babywatchmonitor.com".

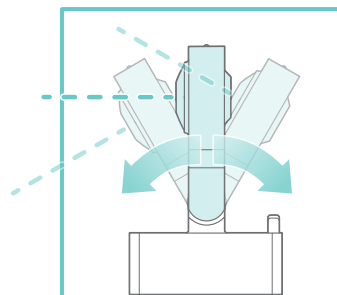


REAR VIEW OF CAMERA

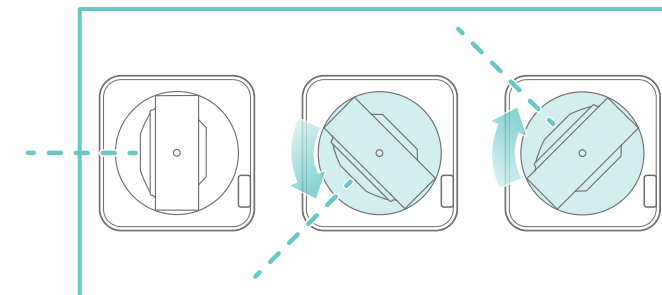
(Unplug the USB cable after set up is completed.)

Flat Surface Mounting

- Set the Babywatch 2.0 Camera on a flat surface with an unobstructed view of your child.
- Once the camera is connected with either your computer or the VIEWER, you can TILT or ROTATE camera through camera controls on the Viewer or website to get the best view. You may also use your compatible iDevice, Smart Phone or Smart Tablet but requires download of the BABYWATCH APP.
- For the best performance, do not place the Viewer within 18 inch of the Babywatch Camera.



TILT DOWN OR UP



ROTATE LEFT OR RIGHT

SET UP

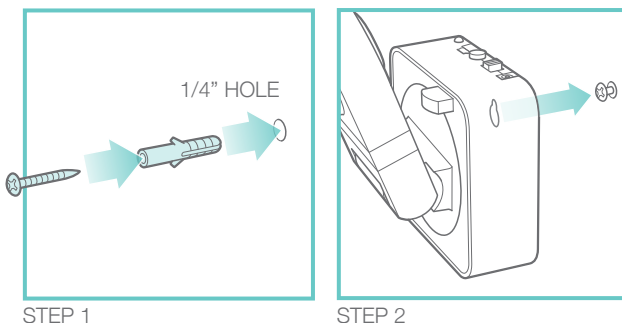
Set up the Babywatch 2.0 Camera

Wall Mounting

The Babywatch 2.0 Camera can be mounted on a wall overlooking your baby. Once the camera is connected with your WI-FI system, you can TILT or ROTATE camera through camera controls on the Viewer, iDevice, Smart phone or Website to get the best view.

- STEP ①

DRILL a 1/4" HOLE in the wall. Insert wall anchor into the hole. Insert screw into the wall anchor.



STEP 1

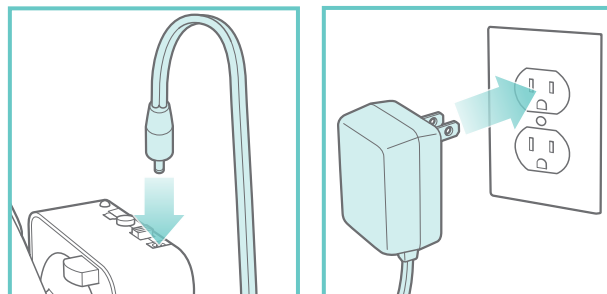
STEP 2

ADULT ASSEMBLY ONLY

Always keep unattached screws away from young children to avoid risk of small component and sharp end.

- STEP ②

Place the BABYWATCH CAMERA on the SCREW and LOWER slightly to secure.



STEP 3

STEP 4

- STEP ③

Plug the AC/DC ADAPTOR into the back of the BABYWATCH CAMERA as shown.

- STEP ④

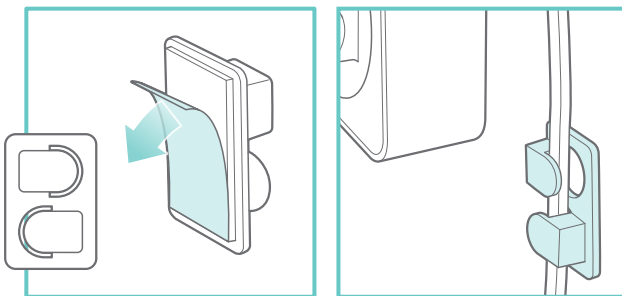
Plug the other end into a 110V AC outlet.

- STEP ⑤

Remove the BACKING from the ELECTRICAL CORD HOLDER.

- STEP ⑥

Use the ELECTRICAL CORD HOLDERS to attach the AC/DC ADAPTOR CORD to the wall.



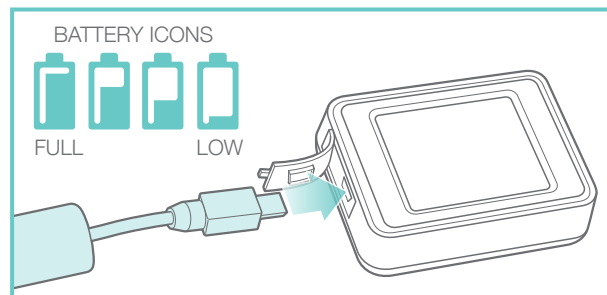
STEP 5

STEP 6

Charge the Babywatch 2.0

Camera Viewer

- Plug the USB CORD into the side of the CAMERA VIEWER as shown.
- Plug the other end into your computer or a USB adaptor.
- BATTERY ICON in VIEWER SCREEN will show when fully charged.
- Remove USB CORD. Battery charge will last approximately 12 hours. (Sleep mode)



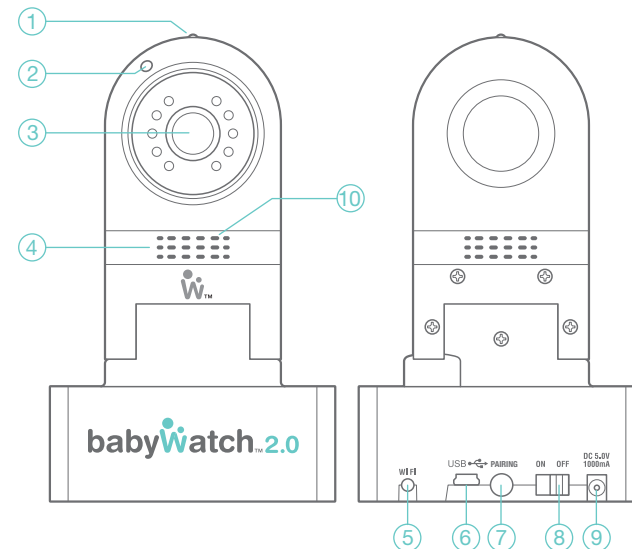
VIEWER CHARGING

*USB port on viewer is used for charging purpose only.

CONTROLS

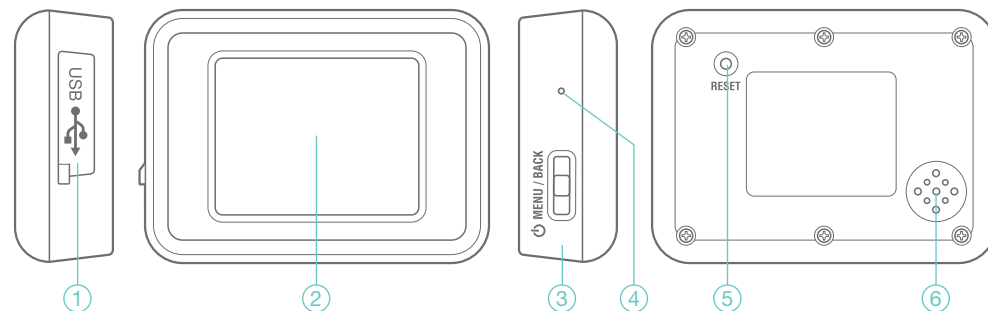
Babywatch 2.0 Camera

- ① LIGHT SENSOR
- ② POWER ON LIGHT
- ③ CAMERA LENS
- ④ MICROPHONE
- ⑤ WI-FI INDICATOR
- ⑥ USB PORT
- ⑦ PAIRING BUTTON
- ⑧ ON/OFF SWITCH
- ⑨ AD/DC ADAPTOR PLUG
- ⑩ SPEAKER

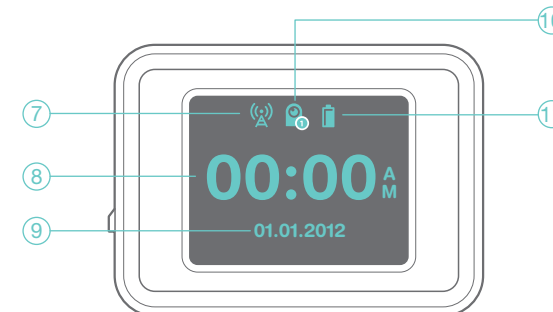


Camera Viewer

- ① USB PORT
- ② VIEWING SCREEN
- ③ MENU / BACK
- ④ MICROPHONE
- ⑤ RESET BUTTON
- ⑥ SPEAKER



- ⑦ 2.4GHZ SIGNAL STRENGTH
- ⑧ TIME
- ⑨ DATE
- ⑩ CAMERA NUMBER
- ⑪ BATTERY LEVEL



DOWNLOADING APP

Apple:

Go to the Appstore on your device

Search for BABYWATCH

Press the FREE button to the left of the app icon to begin download.



ANDROID:

Go to the Google Play market on your device

Search for BABYWATCH

Press the INSTALL button to the right of the app icon to begin download.



An additional cost may be incurred by download / going online check your data charges with your network provider.

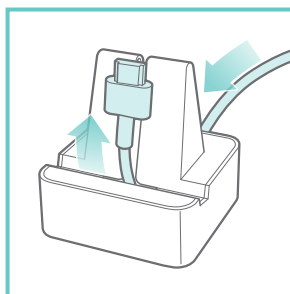
SMART DEVICES

Monitor your Baby with a Smart Device

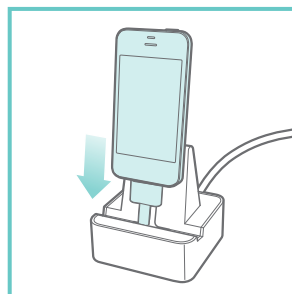
Download the BABYWATCH APP from the iTunes App Store or Google Play market. Use the SMART DEVICE STAND to hold your SMART DEVICE.

STEP ①

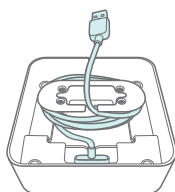
Be sure Babywatch 2.0 Camera is plugged into AC adaptor and powered. Insert the CHARGING CORD through the bottom of the SMART DEVICE STAND. (CHARGING CORD is not included)



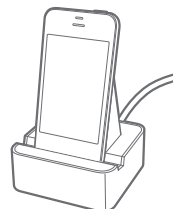
STEP 1



STEP 2



Wind the cable under the base.



PAIRING

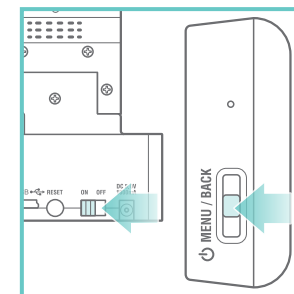
Connect the Babywatch between Camera 2.0 and the Camera Viewer

OUT OF THE BOX:

Both units are factory PAIRED, but if you have pressed the RESET BUTTON on the VIEWER, or if they are not paired:

STEP ①

Move the ON/OFF Switch on the Babywatch Camera to the ON position. Press and hold in the POWER BUTTON on the VIEWER for 3 seconds.



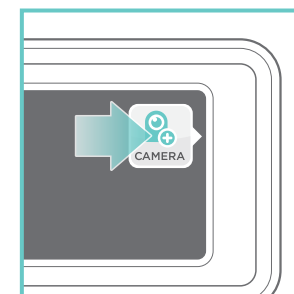
STEP 1



STEP 2

STEP ②

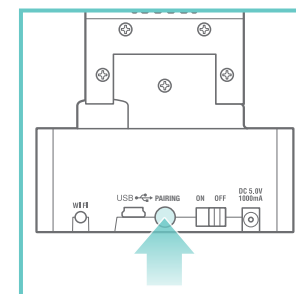
Press menu button, then access the VIEWER MENU (Touch Quadrant 3).



STEP 3

STEP ③

Select ADD CAMERA (Touch Quadrant 2). The VIEWER will display "SCANNING".



STEP 4

STEP ④

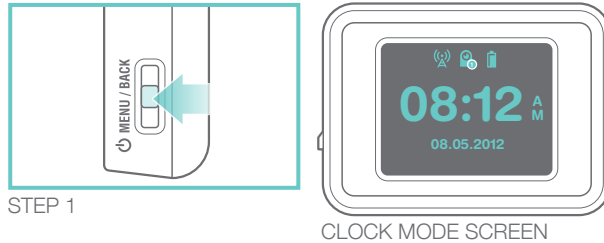
Press the PAIRING BUTTON on the back of the Babywatch Camera for 3 seconds. The VIEWER will display "Added", if pairing is successful.

OPERATION

Live View, Main Menu, Settings, Brightness and Date/Time Format

LIVE VIEW MODE

- Move the ON/OFF Switch on the Babywatch Camera to the ON position.
- Press the POWER BUTTON on the VIEWER, the VIEWER will display in CLOCK mode.
- Press BUTTON again, VIEWER will enter LIVE VIEW, which displays what the BABYWATCH CAMERA 2.0 is seeing. (Press BUTTON can switch between LIVE VIEW screen & CLOCK mode.)



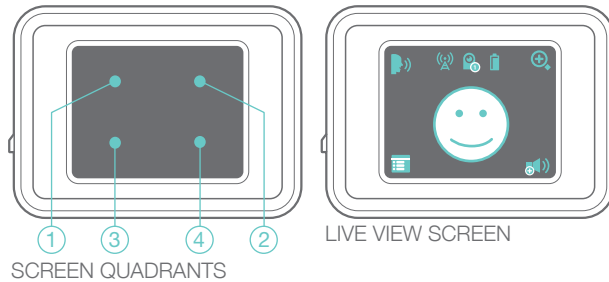
REFERENCE

Areas of the VIEWER SCREEN will be referenced as QUADRANTS:

- ① QUADRANT 1
- ② QUADRANT 2
- ③ QUADRANT 3
- ④ QUADRANT 4

MAIN MENU

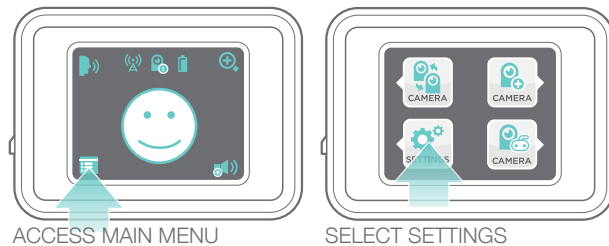
In LIVE MODE, Touch quadrant 3 to access the MAIN MENU.



SETTINGS

Touch quadrant 3 again to access the SETTINGS MENU.

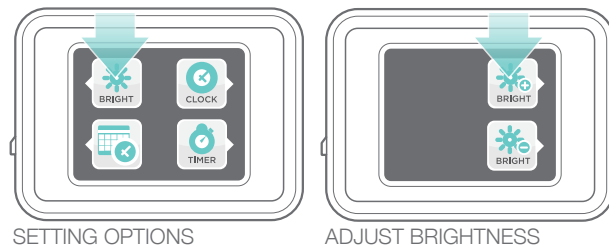
- ① QUADRANT 1: BRIGHTNESS
- ② QUADRANT 2: CLOCK
- ③ QUADRANT 3: DATE/TIME
- ④ QUADRANT 4: TIMER



BRIGHTNESS

Touch quadrant 1 to access the BRIGHTNESS SETTINGS. The VIEWER will go into LIVE MODE with 2 BRIGHTNESS ICONS overlaid. Touch quadrant 2 to INCREASE brightness or quadrant 4 to DECREASE brightness.

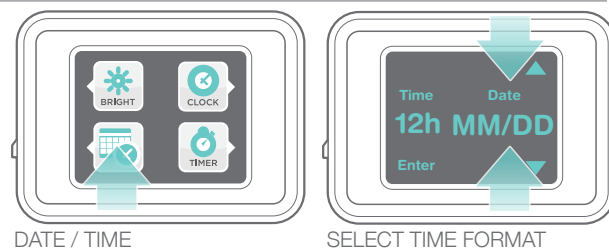
(Press Button back to the Previous Menu.)



DATE / TIME FORMAT

Touch quadrant 3 to select the DATE/TIME FORMAT MENU. The DATE settings can be displayed in MONTH/DAY or DAY/MONTH digits. The TIME can be displayed in 12 or 24 HOUR digits.

TIME Touch quadrant 2 or 4 to toggle between 12 or 24 HOUR digits.

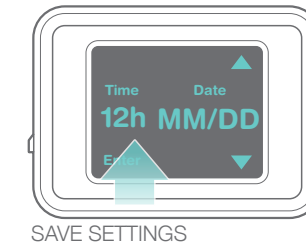
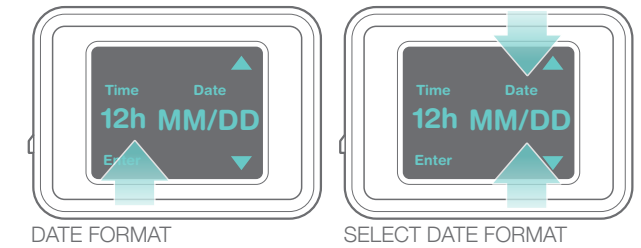


OPERATION

Date/Time Format and Clock Settings

DATE / TIME FORMAT (continued)

DATE Touch quadrant 3 to access the MONTH/DAY settings. Touch quadrant 2 or 4 to toggle between MM/DD or DD/MM. Touch quadrant 3 to SAVE settings.



SET CLOCK:

CLOCK

Touch quadrant 2 to set the current DATE and TIME.

- HOUR The HOUR digits will start blinking. Touch quadrant 2 to add an hour, or 4 to subtract an hour. Touch quadrant 3 to SAVE.

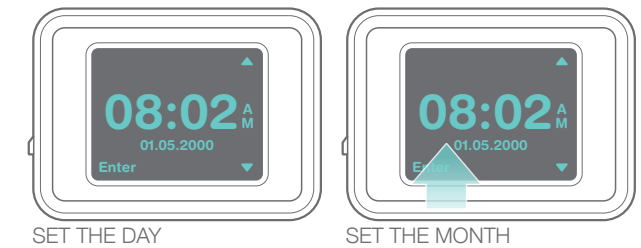
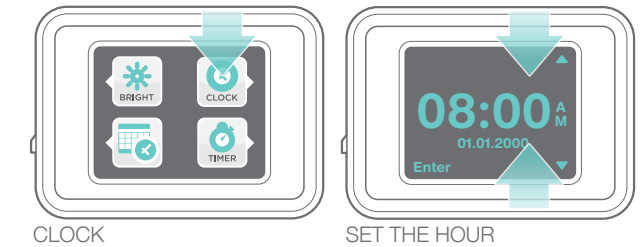
- MINUTES The MINUTES digits will start blinking. Touch quadrant 2 to add a minute, or 4 to subtract a minute. Touch quadrant 3 to SAVE.

- AM/PM The AM or PM will start blinking. Touch quadrant 2 or 4 to toggle. Touch quadrant 3 to SAVE.

- DAY The DAY digits will start blinking. Touch quadrant 2 to add a day, or 4 to subtract a day. Touch quadrant 3 to SAVE.

- MONTH The MONTH digits will start blinking. Touch quadrant 2 to add a month, or 4 to subtract a month. Touch Quadrant 3 to SAVE.

- YEAR The YEAR digits will start blinking. Touch quadrant 2 to add a year, or 4 to subtract a year. Touch quadrant 3 to SAVE.

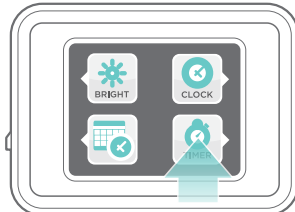


OPERATION

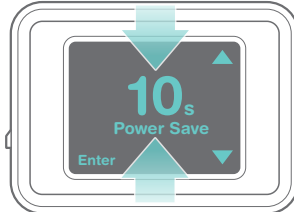
Sleep Timer Mode, Wake up Mode Volume Settings

SLEEP TIMER MODE

- Touch quadrant 4 to access the SLEEP Timer. Setting touch quadrant 2 to add or 4 to subtract. The power save can be set to 5, 10, 15 or 30 seconds.
- Touch quadrant 3 to SAVE setting. The viewer will display sleep warning before sleep.



SLEEP TIMER SETTINGS



SELECT POWER SAVE SECOND



GO TO SLEEP AFTER 1 SECOND

WAKE UP MODE

- Touch any quadrant or press the POWER BUTTON to wake up the viewer. WAKE UP SCREEN will display the Babywatch logo then go to CLOCK MODE screen.
- Press the POWER BUTTON to go LIVE VIEW MODE screen.



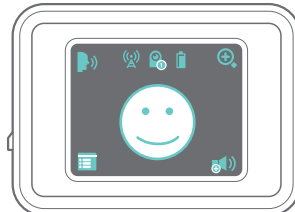
WAKE UP SCREEN



CLOCK MODE SCREEN

SOUND DETECTION WAKE UP MODE

In the Camera, if higher sound level is detected, the Viewer will wake up automatically and go to LIVE VIEW MODE screen.



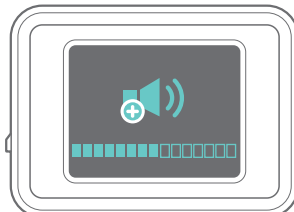
LIVE VIEW MODE SCREEN

VOLUME SETTINGS

- In LIVE VIEW mode, touch quadrant 4 to access the volume settings.
- Touch quadrant 4 to add the volume level. Touch quadrant 4 one time to increase 1 Level, total 15 Levels. After 15 Levels, volume will go back to Level 0.



VOLUME SETTING



OPERATION

Zoom, Push to Talk Settings

ZOOM

- In LIVE VIEW mode, touch quadrant 2 to Zoom in the VIEW.
- Touch quadrant 2 again to go back the NORMAL VIEW.



NORMAL VIEW



ZOOMED IN

PUSH TO TALK

- In LIVE MODE, TOUCH & HOLD quadrant 1, the sound will go from Viewer to Camera.
- RELEASE THE HOLD of quadrant 1, the sound will go back from camera to viewer.



LIVE VIEW SCREEN

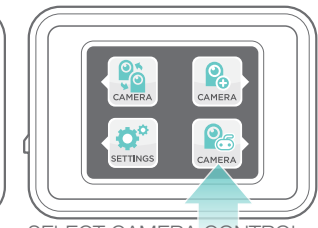
Camera Control Mode and Add Additional Camera(s)

CAMERA CONTROL MODE

- In LIVE VIEW mode, Touch quadrant 3 to access the main menu.
- Touch quadrant 4 to access the camera control mode.
- TOUCH & HOLD quadrant 2 or 4 to control the camera to rotate left or right.
- TOUCH & HOLD quadrant 1 or 3 to control the camera to tilt up or down.
- Press the button to go back the Main Menu.



ACCESS MAIN MENU



SELECT CAMERA CONTROL MODE



CAMERA CONTROL

OPERATION

ADD A NEW CAMERA

- In LIVE VIEW MODE, touch quadrant 3 to access the main menu.
- Touch quadrant 2 to access the ADD NEW CAMERA MODE. The viewer will scan the new camera.
- Press the Pairing Button on the back of Babywatch Camera for 3 seconds. The Viewer will display "ADDED" if pairing is successful.

The maximum add 4 Cameras for 1 VIEWER.

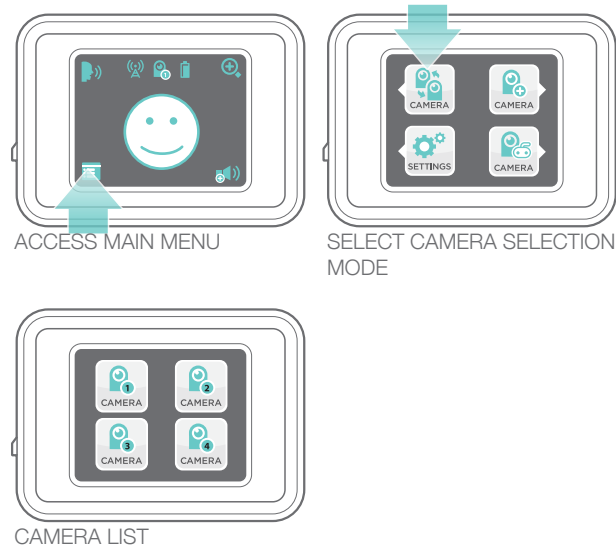
(Additional Camera Need to Buy Separately.)



Camera Selection

SELECT A CAMERA

- In LIVE VIEW mode, touch quadrant 3 to access the Main Menu.
- Touch quadrant 1 to access the camera selection mode.
- Touch quadrant 1-4 to select different camera to view.

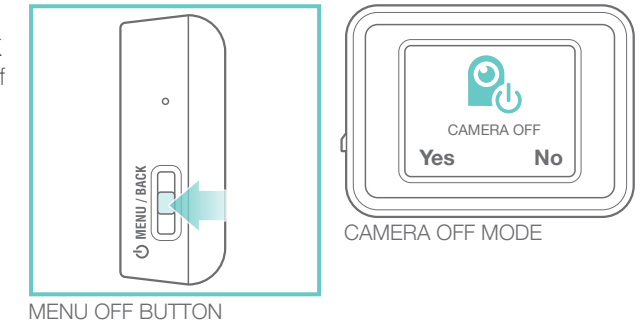


OPERATION

CAMERA OFF MODE SETTING

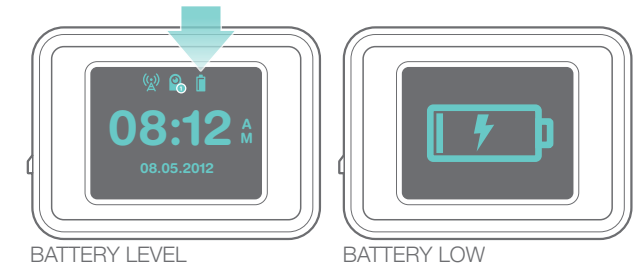
CAMERA OFF

- PRESS & HOLD the MENU/BACK button for 3 seconds. The camera off screen will display.
- Touch quadrant 3 to camera off.



BATTERY LEVEL

The Battery Level display at the top right side. When Battery Low, the Low Battery icon will display with BEEP sound alarm.



SIGNAL LEVEL

The Signal Level display at the top left side.

When signal is lost, the Lost Signal icon will display with Beep sound alarm.



This device complies with part 15 of the FCC Rules and Industry Canada license-exempt RSS standard(s). Operation is subject to the following two conditions: (1) This device may not cause harmful interference, and (2) this device must accept any interference received, including interference that may cause undesired operation.

This Class B digital apparatus complies with Canadian ICES-003.

Warning: Changes or modifications to this equipment not expressly approved by the party responsible for compliance could void the user's authority to operate the equipment.

NOTE: This equipment has been tested and found to comply with the limits for a Class B digital device, pursuant to Part 15 of the FCC Rules. These limits are designed to provide reasonable protection against harmful interference in a residential installation. This equipment generates, uses and can radiate radio frequency energy and, if not installed and used in accordance with the instructions, may cause harmful interference to radio communications.

However, there is no guarantee that interference will not occur in a particular installation. If this equipment does cause harmful interference to radio or television reception, which can be determined by turning the equipment off and on, the user is encouraged to try to correct the interference by one or more of the following measures:

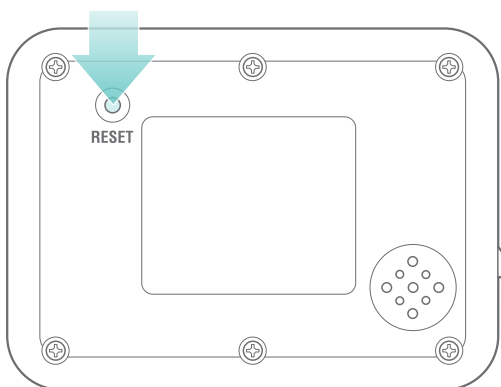
- Reorient or relocate the receiving antenna.
- Increase the separation between the equipment and receiver.
- Connect the equipment into an outlet on a circuit different from that to which the receiver is connected.
- Consult the dealer or an experienced radio/TV technician for help.

TROUBLESHOOTING

Reset Button

If the BABYWATCH 2.0 CAMERA or VIEWER begin to function erratically, press the RESET BUTTON on the back of the VIEWER.

Once the RESET BUTTON has been activated, the units will no longer be paired. For instructions on how to establish PAIRING, go to page 7.



WARRANTY

JAKKS Pacific® Battery or Electrically-Operated Toy 90 DAY LIMITED WARRANTY

Thanks for purchasing a great JAKKS Pacific® product!
Please immediately register your product online at www.jakks.com/warranty.
Registration is not required for the effectiveness of this limited warranty.

IMPORTANT NOTICE TO CONSUMER:

This 90 DAY LIMITED WARRANTY applies to the original product purchaser, provided the product: 1) was purchased from an authorized JAKKS™ distributor/dealer/retailer, and 2) is returned at your expense, postage pre-paid and insured, along with the original dated sales receipt to the address noted below. Please save a copy of your original sales receipt, as the original receipt will not be returned to you. If you return the product to us without the original dated sales receipt, this warranty coverage will not apply. If the product is determined by JAKKS to be defective and returned to JAKKS within the 90 day warranty period, we will (at our option) repair or replace it. Return shipment to you may take up to 6 weeks, depending upon your location. If your product is repaired or replaced, it will be warranted for the longer of the original warranty or for 30 days after warranty service.

SCOPE OF LIMITED WARRANTY: The product is warranted to be: a) tested and inspected before shipment, and b) free of defects in material and workmanship for 90 days from date of purchase. If a covered defect occurs within the warranty period, then at our sole option, we will repair or replace the product or provide you with another product of equal value.

WHAT IS NOT COVERED BY LIMITED WARRANTY: THIS WARRANTY IS VOID IF THE PRODUCT HAS BEEN MODIFIED OR REPAIRED BY USER OR OTHERS OR IF IT HAS BEEN DAMAGED AS A RESULT OF ACCIDENT, IMMERSION IN WATER, NEGLIGENCE, ABUSE, MISUSE, BATTERY LEAKAGE, IMPROPER BATTERY INSTALLATION, UNAUTHORIZED SERVICE, LOSS OF PARTS, WEATHER, ACTS OF GOD, ANY ACTION OR OMISSION WHICH CONSTITUTES A DEVIATION FROM THE OPERATING INSTRUCTIONS, OR ANY OTHER CAUSES NOT ARISING OUT OF DEFECTS IN WORKMANSHIP OR MATERIALS. EXCLUSIONS FROM LIMITED WARRANTY: THIS WARRANTY IS EXCLUSIVE OF AND IN LIEU OF ALL OTHER EXPRESS OR IMPLIED WARRANTIES RELATED TO THIS PRODUCT, INCLUDING ANY IMPLIED WARRANTIES OF MERCHANTABILITY OR FITNESS FOR A PARTICULAR PURPOSE. SPECIAL, INCIDENTAL AND CONSEQUENTIAL DAMAGES ARISING FROM POSSESSION, USE, OR MALFUNCTION OF THIS PRODUCT ARE EXCLUDED BOTH FOR PROPERTY DAMAGE AND PERSONAL INJURY TO THE EXTENT LEGALLY PERMITTED.

ADDITIONAL LEGAL RIGHTS: This warranty provides specific legal rights. You may have other or different rights in your state or country.

QUESTIONS OR COMMENTS: If you experience product difficulties or have questions or comments, you may contact our Consumer Relations department as follows:

Phone: 877-875-2557 (toll-free, North America only) or 909-594-7771 x560 (Monday- Friday, 7:30AM-4:30PM Pacific/GMT -8).

Mail: JAKKS Consumer Relations, 21749 Baker Parkway, Walnut, California USA 91789. Email: consumers@jakks.com

WHEN WRITING TO US: Please include: 1) product name; 2) item number; 3) purchase date; 4) description of the problem being experienced; and 5) your name, address and phone number. Additionally, if eligible under the warranty and so advised by JAKKS Consumer Relations, also include the defective product and the ORIGINAL dated sales receipt evidencing product purchase. Please retain a copy of your receipt.

ADDITIONAL STATEMENT

Supplied USB cables with ferrite and adaptor with ferrite must be used with this device to ensure compliance with the Class B FCC limits.

To ensure safety of users, the FCC has established criteria for the amount of radio frequency energy that can be safely absorbed by a user or bystander according to the intended usage of the product. This product has been tested and found to comply with the FCC criteria. The baby unit shall be installed and used such that parts of the user's body are maintained at a distance of approximately 20 cm (8 inches) or more.