

TROUBLESHOOTING

PROBLEM	POSSIBLE CAUSE	SOLUTION
Incredible won't move.	Incredible/Controller is switched OFF.	Move switch to ON position.
	Weak Battery in Controller/Incredible	Ensure the batteries in the controller and Incredible are fresh.
	Controller is not close enough to vehicle.	Make sure the Controller is placed within the signal receiving range.
Incredible is stuck.	Incredible is stuck.	Move Incredible to a smoother surface, clean wheels, make sure surface or floor is clean as well.
Incredible will not go in a straight line.	Trim Control may need adjusting.	See instructions (page 3) on how to adjust the Trim Control.

JAKKS Pacific® Battery or Electrically-Operated Toy 90 DAY LIMITED WARRANTY

Thanks for purchasing a great JAKKS Pacific® product! Please immediately register your product online at www.jakks.com/warranty. Registration is not required for the effectiveness of this limited warranty.

IMPORTANT NOTICE TO CONSUMER:

This 90 DAY LIMITED WARRANTY applies to the original product purchaser, provided the product: (1) was purchased from an authorized JAKKS Pacific distributor/retailer and (2) is returned at your expense, postage prepaid and insured, along with the original dated sales receipt to the address noted below. Please save a copy of your original sales receipt, as the original receipt will not be returned to you. If you return the product to us without the original dated sales receipt, this warranty coverage will not apply. If the product is determined by JAKKS to be defective and returned to JAKKS within the 90 day warranty period, we will (at our option) repair or replace it. Return shipment to you may take up to 6 weeks, depending upon your location. If your product is repaired or replaced, it will be warranted for the longer of the original warranty or for 30 days after warranty service.

SCOPE OF LIMITED WARRANTY: The product is warranted to be: a) tested and inspected before shipment, and b) free of defects in material and workmanship for 90 days from date of purchase. If a covered defect occurs within the warranty period, then at our sole option, we will repair or replace the product or provide you with another product of equal value.

WHAT IS NOT COVERED BY LIMITED WARRANTY: THIS WARRANTY IS VOID IF THE PRODUCT HAS BEEN MODIFIED OR REPAIRED BY USER OR OTHERS OR IF IT HAS BEEN DAMAGED AS A RESULT OF ACCIDENT, IMMERSION IN WATER, NEGLIGENCE, ABUSE, MISUSE, BATTERY LEAKAGE, IMPROPER BATTERY INSTALLATION, UNAUTHORIZED SERVICE, LOSS OF PARTS, WEATHER, ACTS OF GOD, ANY ACTION OR OMISSION WHICH CONSTITUTES A DEVIATION FROM THE OPERATING INSTRUCTIONS, OR ANY OTHER CAUSES NOT ARISING OUT OF DEFECTS IN WORKMANSHIP OR MATERIALS.

EXCLUSIONS FROM LIMITED WARRANTY: THIS WARRANTY IS EXCLUSIVE OF AND IN LIEU OF ALL OTHER EXPRESS OR IMPLIED WARRANTIES RELATED TO THIS PRODUCT, INCLUDING ANY IMPLIED WARRANTIES OF MERCHANTABILITY OR FITNESS FOR A PARTICULAR PURPOSE. SPECIAL, INCIDENTAL AND CONSEQUENTIAL DAMAGES ARISING FROM POSSESSION, USE OR MALFUNCTION OF THIS PRODUCT ARE EXCLUDED BOTH FOR PROPERTY DAMAGE AND PERSONAL INJURY TO THE EXTENT LEGALLY PERMITTED.

ADDITIONAL LEGAL RIGHTS: This warranty provides specific legal rights. You may have other or different rights in your state or country.

QUESTIONS OR COMMENTS: If you experience product difficulties or have questions or comments, you may contact our Consumer Relations department as follows:

Phone: 877-875-2557 (toll-free, North America only) or 909-594-7771 (Monday - Friday, 7:30AM - 4:30PM Pacific/GMT - 8).

Mail: JAKKS Consumer Relations, 21749 Baker Parkway, Walnut, California USA 91789

Email: consumers@jakks.com

WHEN WRITING TO US: Please include: 1) product name; 2) item number; 3) purchase date; 4) description of the problem being experienced; and 5) your name, address and phone number. Additionally if eligible under the warranty and so advised by JAKKS Consumer Relations, also include the defective product and the ORIGINAL dated sales receipt evidencing product purchase. Please retain a copy of your receipt.

5

BATTERY SAFETY INFORMATION:

WARNING! Battery acid leakage can cause personal injury and cause damage to the product and surrounding property. If battery leakage occurs, thoroughly wash any affected skin, making sure to keep battery acid away from eyes, ears, nose and mouth. Immediately wash any clothing or other surface that comes in contact with leaked battery acid. Leaking batteries may make "popping" sounds. Always remove replaceable batteries before disposing product. Dispose batteries or products with non-replaceable batteries according to Local, State or Federal Battery and Recycling Laws.

TO AVOID BATTERY PROBLEMS:
NEVER mix old and new batteries or different brands of batteries.
NEVER mix alkaline, standard (carbon-zinc), rechargeable batteries with this product.
NEVER dispose of batteries in fire, as they may leak and explode.
ALWAYS remove exhausted batteries from toy.
ALWAYS have an adult install batteries consistent with installation instructions.
ONLY use batteries specified by manufacturer.
Batteries are to be inserted with the correct Polarity (+ and -).
The supply terminals are not to be short-circuited.
Non-rechargeable batteries are not to be recharged.
Rechargeable batteries are to be removed from the toy before being charged.
Rechargeable batteries are only to be charged under adult supervision.

This device complies with Part 15 of the FCC Rules. Operation is subject to the following two conditions: (1) this device may not cause harmful interference, and (2) this device must accept any interference received, including interference that may cause undesired operation.

WARNING: Changes or modifications to this unit not expressly approved by the party responsible for compliance could void the user's authority to operate the equipment.

NOTE: This equipment has been tested and found to comply with the limits for Class B digital device, pursuant to Part 15 of the FCC Rules. These limits are designed to provide reasonable protection against harmful interference in a residential installation. This equipment generates, uses and can radiate radio frequency energy and, if not installed and used in accordance with the instructions, may cause harmful interference to radio communications. However, there is no guarantee that interference will not occur in a particular installation. If this equipment does cause harmful interference to radio or television reception, which can be determined by turning the equipment off and on, the user is encouraged to try to correct the interference by one or more of the following measures:

- Reorient or relocate the receiving antenna.
- Increase the separation between the equipment and receiver.
- Connect the equipment into an outlet on a circuit different from that to which the receiver is connected.
- Consult the dealer or an experienced radio/TV technician for help.

This device complies with Industry Canada licence-exempt RSS standard(s). Operation is subject to the following two conditions: (1) this device may not cause interference, and (2) this device must accept any interference including interference that may cause undesired operation of the device.

IMPORTANT SAFETY INFORMATION

NEVER use near glass and other fragile objects.
NEVER drive near traffic, building, trees, people, animals, or other obstructions.
NEVER operate during storms or other adverse weather conditions.
ALWAYS point away from face, eyes, people, animals and property when driving.
ALWAYS use alkaline batteries only.

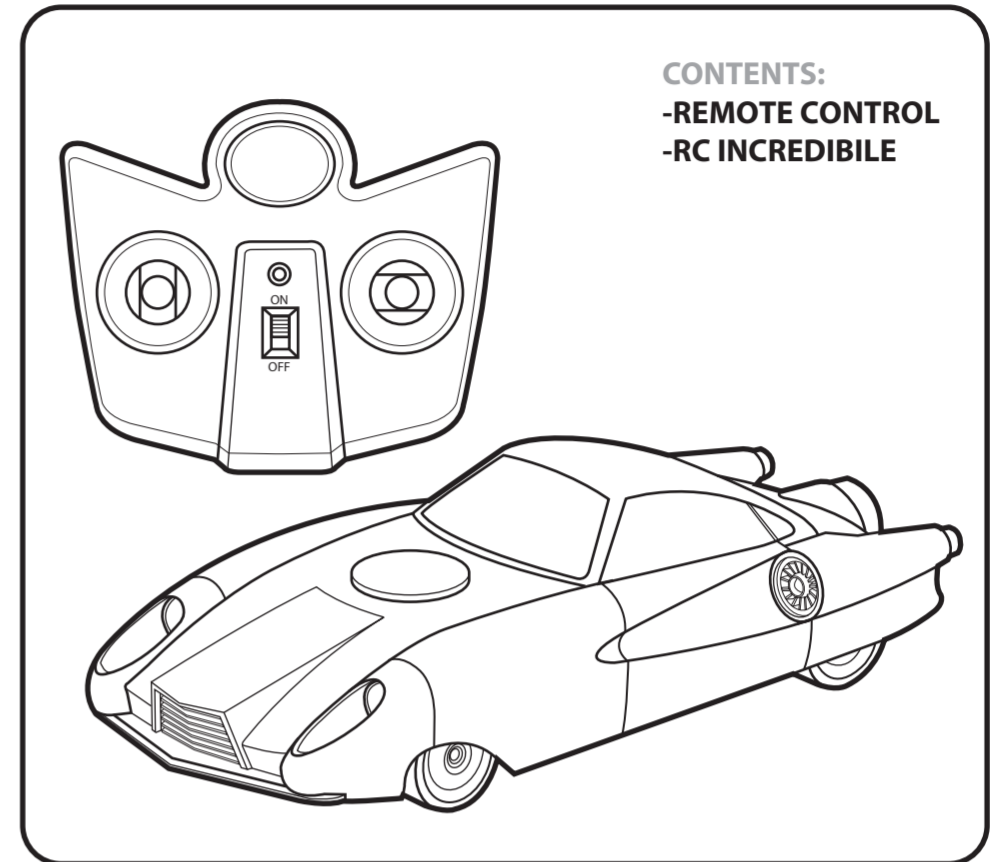
6

RC / 2.4GHz
AGES 8+

ITEM# 74947



INSTRUCTIONS



CONTENTS:
-REMOTE CONTROL
-RC INCREDIBLE

CAUTION: ADULT SUPERVISION REQUIRED. ALWAYS play in safe surroundings, away from streets or moving vehicles.
ATTENTION: SURVEILLANCE PAR UN ADULTE REQUISE. Toujours s'assurer que l'environnement de jeu est sans danger, loin de la chaussée ou de véhicules en marche.

©2018 and manufactured for / fabriqué pour JAKKS PACIFIC, INC., 2951 28TH ST., SANTA MONICA, CA 90405, USA. © and/or™ designate U.S. trademarks of / désignent les marques déposées de JAKKS Pacific. Other trademarks used under license / Autres marques déposées utilisées sous licence. **MADE IN CHINA. FABRIQUE EN CHINE.** Imported into / Importé dans EU by JAKKS Pacific (UK) Ltd., 1 Arlington Square, Downshire Way, Bracknell, Berkshire RG12 1WA, GB and JAKKS Pacific Germany GmbH, Lindenstraße 26a, D-91126 Schwabach, DE.

www.jakks.com www.jakks.com/warranty consumers@jakks.com

North America / Amérique du Nord: 1.877.875.2557 or 1.909.594.7771
United Kingdom / Royaume-Uni: 00 44 (0) 1344.638909

Colors & decoration may vary. Retain packaging/instructions for reference. / Les couleurs et la décoration peuvent varier par rapport aux illustrations. Conserver l'emballage/instructions pour toute référence.
Remove all packaging before giving toy to child. / Enlever le jouet de l'emballage avant de le donner à un enfant.
WARNING! Small Parts. Choking Hazard. / ATTENTION! Petits éléments. Danger d'étouffement.

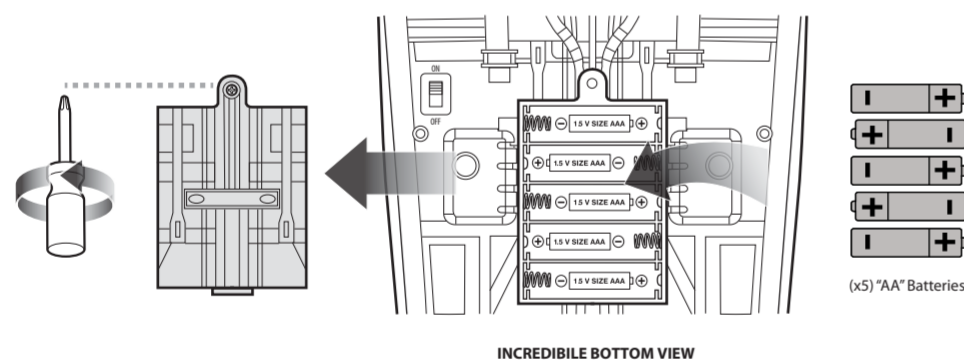
©Disney/Pixar www.disney.com

BATTERY INSTALLATION

ADULT INSTALLATION REQUIRED

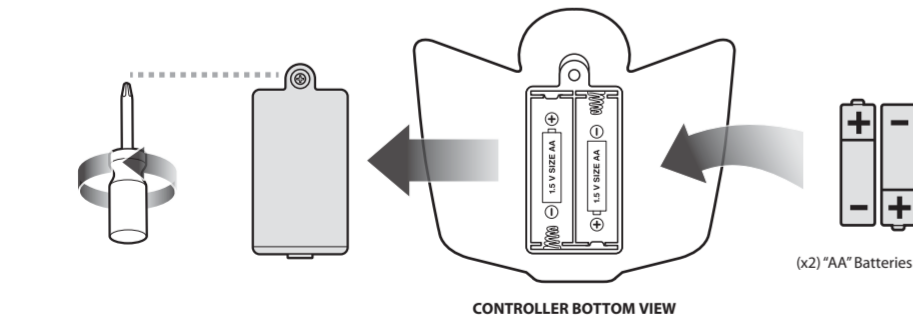
When performance diminishes, replace with fresh batteries.
Requires 7 x 1.5 V "AA" (LR6) batteries (Not included)

VEHICLE



1. Locate battery compartment on bottom of Incredible.
2. Using a Phillips Head Screwdriver (not included), remove the screw and battery door.
3. Install 5 new "AA" (LR6) batteries.
4. Replace the battery cover and the screw.

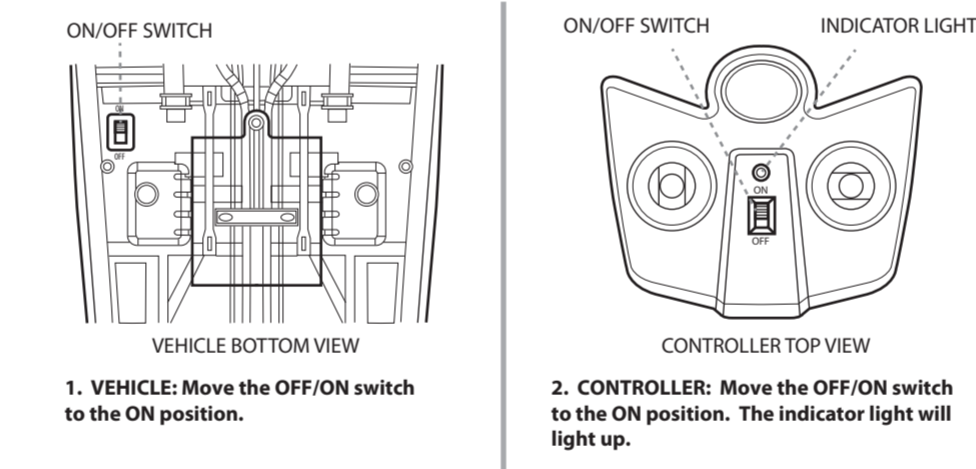
CONTROLLER



1. Locate battery compartment on bottom of Controller.
2. Using a Phillips Head Screwdriver (not included), remove the screw and battery door.
3. Install 2 new "AA" (LR6) batteries.
4. Replace the battery cover and the screw.

2

OPERATION

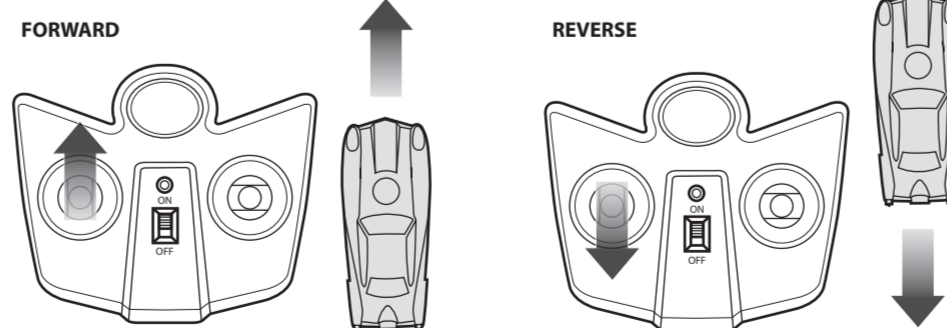


1. **VEHICLE:** Move the OFF/ON switch to the ON position.
2. **CONTROLLER:** Move the OFF/ON switch to the ON position. The indicator light will light up.

3. Place the Incredible on ground. The left joystick moves the vehicle forward and backward. The right joystick turns the vehicle left and right.

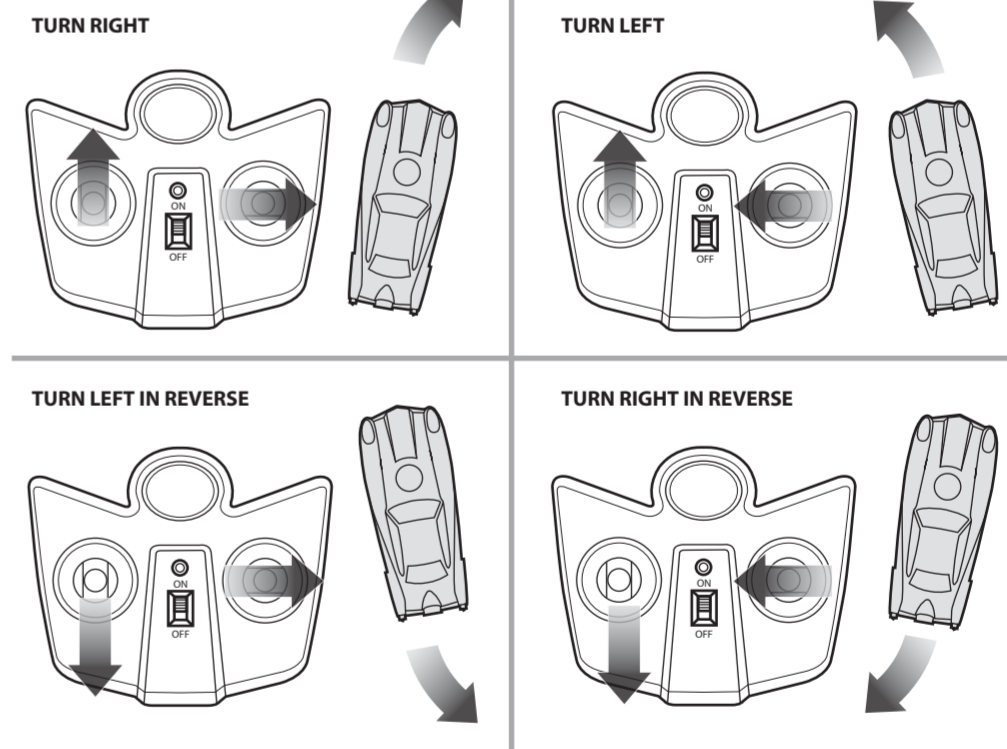
NOTE: This vehicle is for indoor use. Works best on hard surfaces such as wood, tile and concrete.
NOT recommended for use on grass, loose dirt, wet surfaces or low/high pile carpets.
NEVER use in water or mud.

CONTROLS

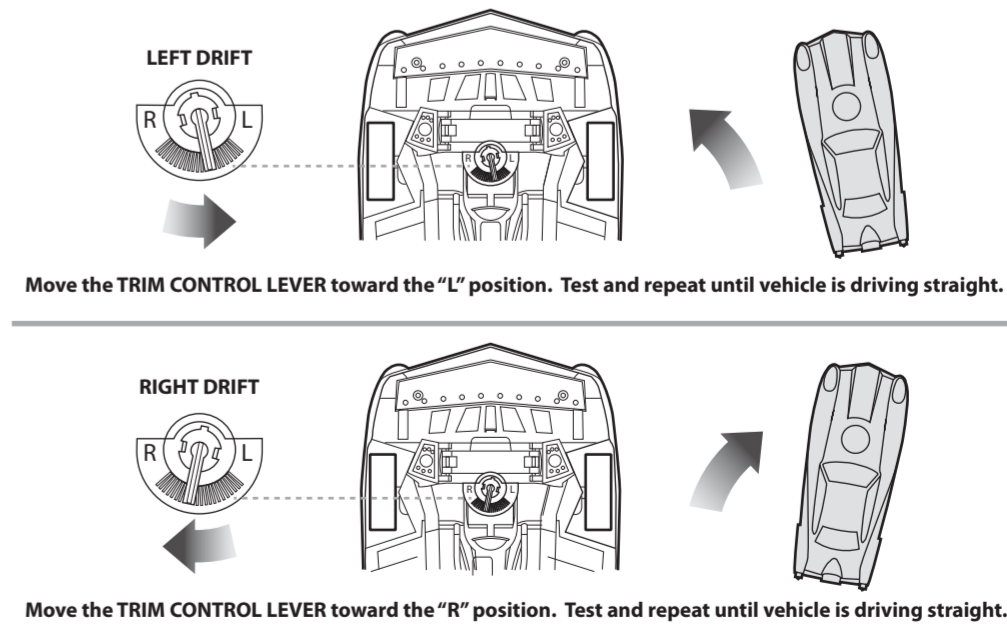


3

CONTROLS (continued)



TRIM CONTROLS (NOTE: Adjust if vehicle is drifting left or right when driving forward.)



Move the TRIM CONTROL LEVER toward the "L" position. Test and repeat until vehicle is driving straight.

Move the TRIM CONTROL LEVER toward the "R" position. Test and repeat until vehicle is driving straight.

4