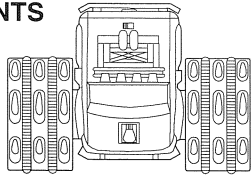
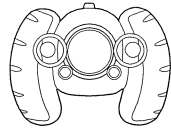




CONTENTS



VEHICLE (X1)

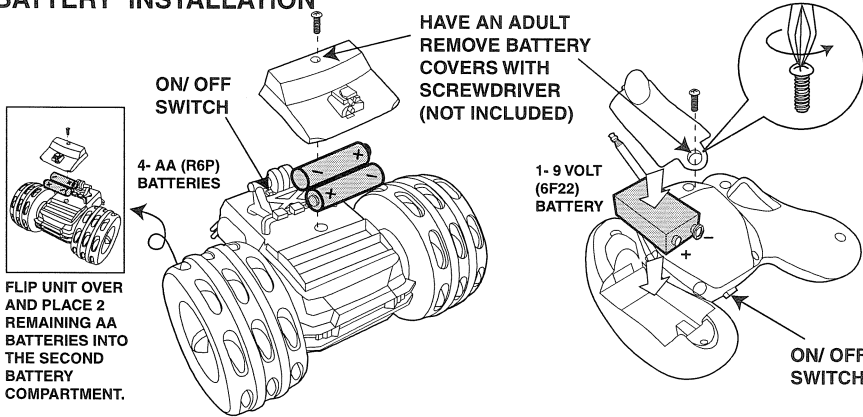


CONTROLLER (X1)



ANTENNA (X1)

BATTERY INSTALLATION



HAVE AN ADULT REMOVE BATTERY COVERS WITH SCREWDRIVER (NOT INCLUDED)

ON/OFF SWITCH

4- AA (R6P) BATTERIES

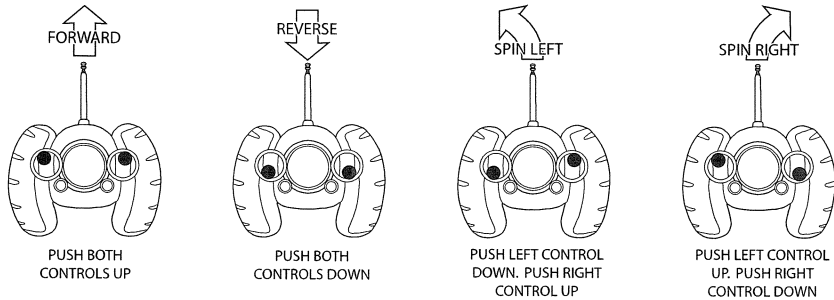
1- 9 VOLT (6F22) BATTERY

ON/OFF SWITCH

FLIP UNIT OVER AND PLACE 2 REMAINING AA BATTERIES INTO THE SECOND BATTERY COMPARTMENT.

OPERATION

THIS FLY WHEELS RADIO CONTROL VEHICLE IS POWERED BY TWO SEPARATE MOTORS WHICH CAUSE THE VEHICLE TO FLIP OVER AND REVERSE DIRECTION. WHEN VEHICLE IS FLIPPED, THE CONTROLS WILL PERFORM THE OPPOSITE FUNCTION AS SHOWN BELOW.



FORWARD

REVERSE

SPIN LEFT

SPIN RIGHT

PUSH BOTH CONTROLS UP

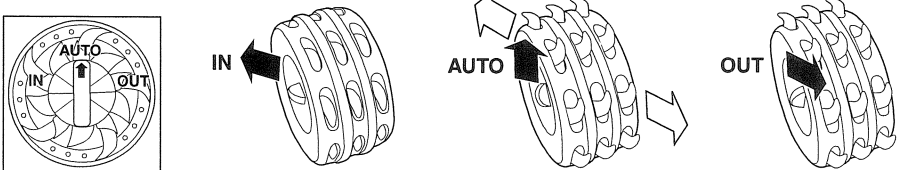
PUSH BOTH CONTROLS DOWN

PUSH LEFT CONTROL DOWN. PUSH RIGHT CONTROL UP

PUSH LEFT CONTROL UP. PUSH RIGHT CONTROL DOWN

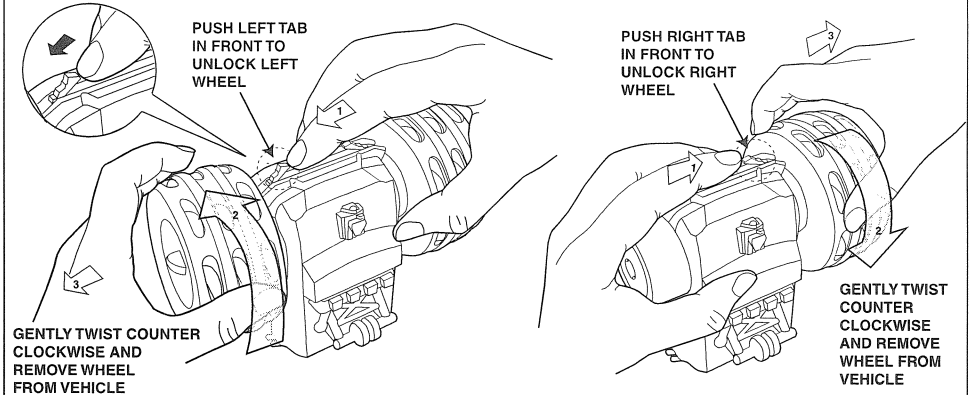
VARY THE CONTROLS FOR ADDITIONAL FUN!

POWER CLAW™ FEATURE



WHEEL REMOVAL

TO REMOVE WHEELS PUSH AND HOLD BUTTON AND REMOVE WHEEL FROM VEHICLE BY TWISTING GENTLY COUNTER-CLOCKWISE AND PULLING. WHEEL WILL EASILY REMOVE. REPEAT FOR OPPOSITE SIDE.



PUSH LEFT TAB IN FRONT TO UNLOCK LEFT WHEEL

PUSH RIGHT TAB IN FRONT TO UNLOCK RIGHT WHEEL

GENTLY TWIST COUNTER CLOCKWISE AND REMOVE WHEEL FROM VEHICLE

GENTLY TWIST COUNTER CLOCKWISE AND REMOVE WHEEL FROM VEHICLE

WHEEL INSTALLATION

TO INSTALL WHEELS FIRST ALIGN TABS ON VEHICLE SIDE TO GROOVES ON INNER WHEEL HUB (SEE DIAGRAM A). INSTALL WHEEL ONTO VEHICLE AND GENTLY TWIST CLOCKWISE UNTIL IT LOCKS INTO PLACE. REPEAT FOR OPPOSITE SIDE.

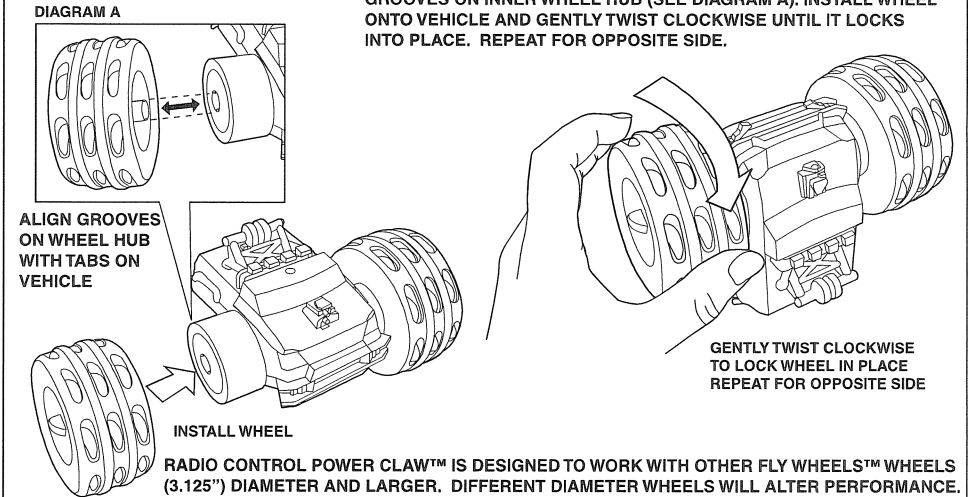


DIAGRAM A

ALIGN GROOVES ON WHEEL HUB WITH TABS ON VEHICLE

INSTALL WHEEL

GENTLY TWIST CLOCKWISE TO LOCK WHEEL IN PLACE REPEAT FOR OPPOSITE SIDE

RADIO CONTROL POWER CLAW™ IS DESIGNED TO WORK WITH OTHER FLY WHEELS™ WHEELS (3.125") DIAMETER AND LARGER. DIFFERENT DIAMETER WHEELS WILL ALTER PERFORMANCE.

CARE AND MAINTAINENCE

1. IF WHEELS BECOME MUDDY- REMOVE THEM AND CLEAN WITH COLD WATER. 2. TO AVOID CIRCUITRY OVERHEATING, THE RC POWER CLAW™ IS DESIGNED WITH A SAFETY SHUT DOWN FEATURE. IF THIS HAPPENS (VEHICLE WILL AUTOMATICALLY SHUT OFF) TURN POWER SWITCH OFF FOR ABOUT TWO MINUTES, THEN TURN BACK ON AGAIN. UNIT WILL BE RESET AND READY FOR PLAY.

This device complies with Part 15 of the FCC Rules. Operation is subject to the following two conditions: (1) this device may not cause harmful interference, and (2) this device must accept any interference received, including interference that may cause undesired operation.

Warning: Changes or modifications to this unit not expressly approved by the party responsible for compliance could void the user's authority to operate the equipment.

NOTE: This equipment has been tested and found to comply with the limits for a Class B digital device, pursuant to Part 15 of the FCC Rules. These limits are designed to provide reasonable protection against harmful interference in a residential installation. This equipment generates, uses and can radiate radio frequency energy, and if not installed and used in accordance with the instructions, may cause harmful interference to radio communications.

However, there is no guarantee that interference will not occur in a particular installation. If this equipment does cause harmful interference to radio or television reception, which can be determined by turning the equipment off and on, the user is encouraged to try to correct the interference by one or more of the following measures:

- Reorient or relocate the receiving antenna.
- Increase the separation between the equipment and receiver.
- Connect the equipment into an outlet on a circuit different from that to which the receiver is connected.
- Consult the dealer or an experienced radio/TV technician for help.

If you experience poor performance or limited reception, batteries may need to be changed.

Only adults should install and change the batteries.

- Never mix old and new batteries or different brands of batteries.
- Never mix alkaline, standard carbon-zinc and rechargeable (nickel-cadmium) batteries.
- Remove exhausted batteries from the toy.
- Never attempt to recharge non-rechargeable batteries.
- Never use rechargeable batteries with this product.
- Do not dispose of batteries in fire. Batteries may leak and explode.
- Changes or modifications to this unit void the user's warranty and authority to operate equipment.

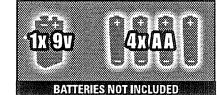
Recommended age: 8+

Recommended for use in outdoor areas.

TM & © 2006 JAKKS Pacific, Inc., Malibu, CA 90265 U.S.A. All Rights Reserved

Printed in China. Content may vary in style, color, shape and decoration from images shown. Questions or comments? www.jakksacific.com, consumers@jakks.net or 1-877-875-2557 in North America. #73642

BATTERY REQUIREMENTS



BATTERIES NOT INCLUDED

27.145 MHz TX Field strength 67.8 dBµV/m at 3m
48.860 MHz TX Field strength 71.0 dBµV/m at 3m
This radiocommunication device complies with all the requirements of Industry Canada Standard RSS-310. Ce dispositif de radiocommunication respecte toutes les exigences de la norme CNR-310 d'Industrie Canada.

FOR BEST RESULTS:

1. Be aware of Radio frequencies. Avoid operating within range of another unit using the same frequency. Radio frequency is indicated on the Package and Controller.
2. Use fresh Alkaline Batteries. Do not mix old and new batteries. If malfunction occurs, replace Batteries.
3. Keep ON/OFF switch in "OFF" position when toy is not in use.
4. Remove Batteries when toy is not in use for extended periods of time.
5. Operate Controller within 45 feet of vehicle.
6. Keep contacts clean from rust and dust.
7. To prevent the vehicle from overheating, a protective circuit will disable the vehicle MOMENTARILY if any function is run continuously for a prolonged period of time.