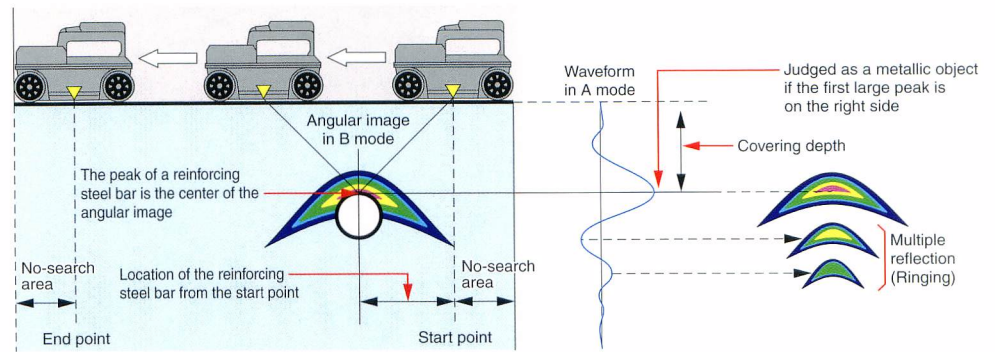


## ● Applicable field

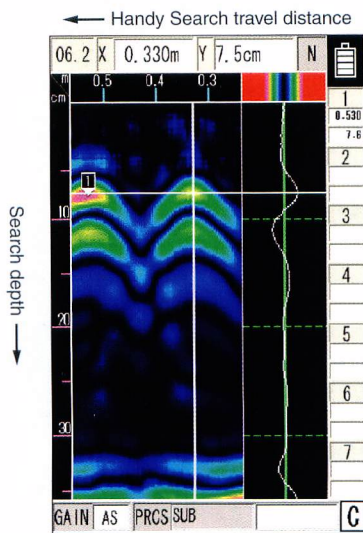
- Concrete anchoring
- Coring
- Electrical facility construction
- Air conditioning facility construction
- Gas construction
- Water supply works
- Concrete building repair
- Concrete building diagnosis
- Concrete bridge completion test, etc.

## ● How to operate Handy Search

The NJJ-95B displays the cross section of the inside of concrete as image data. Therefore, run the NJJ-95B in a direction perpendicular to the search target. The cross section of an object such as a reinforcing steel bar will be displayed as an angular image.



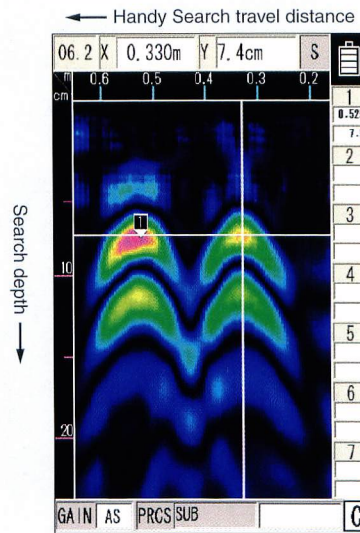
## ● Examples of recording search data



Standard BA-mode display sample

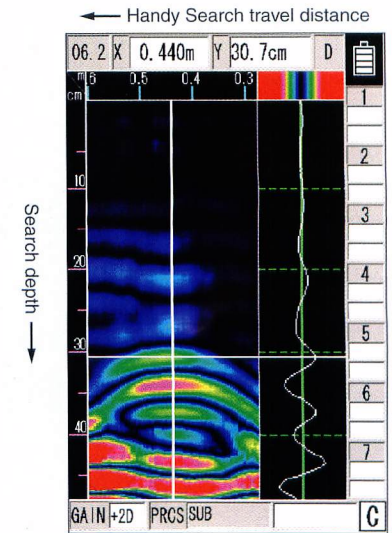
Depth can be measured (\*) accurately by displaying both the vertical sectional view (B mode) and the waveform (A mode). The type of an object (such as a reinforcing steel bar or cavity) can also be presumed.

\* Accurate depth can be obtained on the condition that correction has been made to a dielectric constant as close to the dielectric constant of the on-site concrete as possible.



Shallow B-mode display sample

The resolution of covering depth of the shallow area on the search screen is set to about 1 mm. More detailed analysis can be performed than ever before.



Deep BA-mode display sample

The depth of up to 30 cm can be sensed; 10 cm deeper than conventional.

## ● Main performance

Item	Performance
System	Rader system
Search target	Reinforcing steel bar, vinyl chloride pipe, cavity, etc.
Covering depth	5 to 300 mm (For top reinforcement while the relative dielectric constant of concrete is 6.2 and the reinforcing steel bar diameter is 6 mm or more)
Resolution of covering depth	Shallow mode: About 1 mm, Deep mode: About 2 mm
Resolution in horizontal direction (Pitch)	Search target at a depth below 75 mm: 75 mm or more Search target at a depth of 75 mm or more: Interval equivalent to the depth or more
Maximum search distance	15 m
Display mode	B mode (vertical sectional view) BA mode (vertical sectional view, reflected waveform display)
Image processing	(With search) Automatic real-time surface wave processing, manual real-time subtraction processing (Without search) Manual surface wave processing, peak processing, original image replay processing, fixed surface wave processing, subtraction processing
Display	TFT color LCD (640 x 480 bits)
Depth calibration	6 to 11 in steps of 0.1
Internal storage	Fifteen meters worth of data can be stored
Maximum scanning rate	About 40 cm/s with an overspeed alarm buzzer being provided
Control function	Screen inversion, cursor mark (up to 7 points), battery capacity display
Output function	Dedicated-printer output function (IrDA)
Data save function	Data is saved in compact flash memory
Temperature range	0°C to +50°C
Power supply	Battery pack, AC adapter (optional)
Continuous use time	About 1.5 hours (with the battery pack being fully charged)
Structure	Simple drip-proof structure
Dimension	About 149 (W) x 147 (H) x 216 (D) mm
Weight	About 1.1 kg (battery pack included)

## ● Standard components

Product name	Model	Quantity	Remarks	
Handy Search	NJJ-95B	1	With the antenna section being integrated	
Accessories	Battery pack	BP-3007series	1	Lithium ion battery (about 100 g)
	Battery charger	BC-3008series	1	
	AC cable	CB-A01-J1-Eseries	1	For the battery charger
	Hand strap	H-7ZYMD0018	1	
	Compact flash memory	CF115-512M	1	Memory capacity: 512MB
	Case	H-7ZYMD0017	1	
	Instruction manual		1	A simple instruction sheet and license agreement for software are included
Instruction guide CD-R	H-7ZYMD0016	1		

## ● Options

Product name	Model	Remarks
Printer set	CMZ-203	Printer, paper holder, battery pack, and recording paper (10 rolls)
AC adapter set	CBD-2485	AC adapter and AC cable
Battery charger set	CBK-154	Battery charger and AC cable
Battery pack	BP-3007series	Shared with Handy Search and printer
Recording paper	TP451C	10 rolls per box

## ● Recommended PC editing software

- Radar 3D\_Light
- RC report maker

# Recommended software

Search software for complicated piping!

Applicable to both NJJ-95A and NJJ-95B (Version 5 or later)

## Radar 3D\_Light

Produced by Osaka Gas Engineering Co., Ltd.

- Easy to determine depths with multi-colored depth display
- Easy to determine complicated piping conditions
- Possible to display the image of any location in B mode

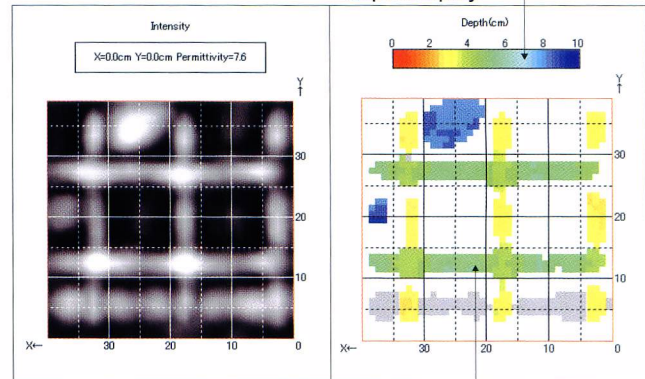
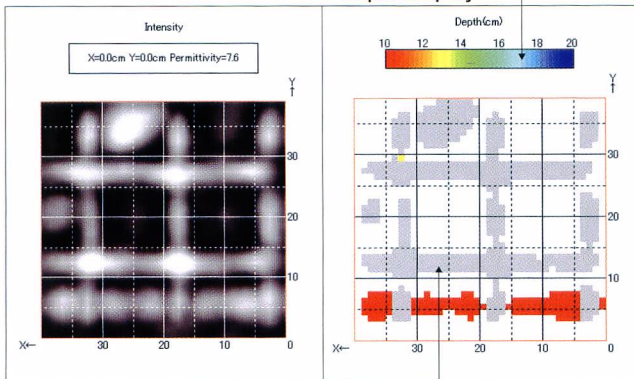
Continuous color display, and gray display outside the depth range (samples)

Moderate depth mode

Multi-colored depth display

Shallow mode

Multi-colored depth display



Gray display indicates the depth is outside the specified range

- Correct depth can be obtained by simply adjusting the focus of an image.
- Three level depth range display for shallow, moderate, and deep depth.

Color display indicates the depth is within the specified range

Significant decrease in time for creating a report! Clear and easy data attachment!

Applicable to NJJ-85A, NJJ-95A, and NJJ-95B (Version 5 or later)

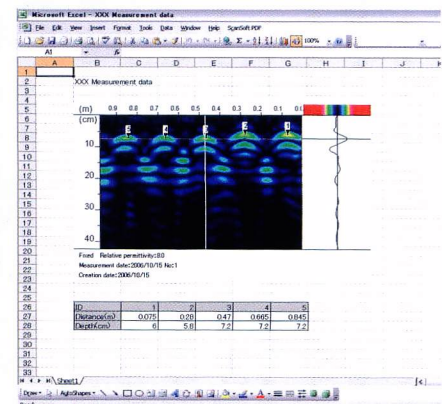
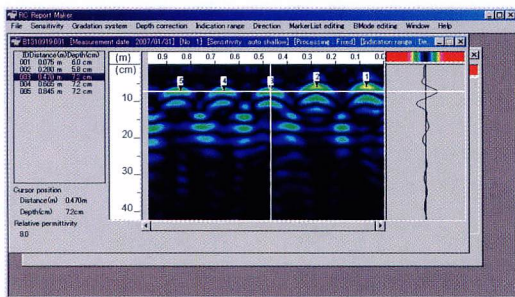
## RC report maker : Report creation support software HS2PC

Produced by KGS Inc.

- Measurement results can be viewed on the personal computer.
- Image processing and marking can be performed efficiently on the personal computer.
- The results of editing data after image processing and marking can be saved intact.
- Editing results are saved in JPEG format. Marker information is automatically listed.



### Increase of report creation efficiency



For details or inquiries, access the KGS website below. Sample data can be downloaded.  
 URL <http://www.kgs-inc.co.jp>

● Specifications may be subject to change without notice.

For further information, contact:



Since 1915

# Japan Radio Co., Ltd.

URL <http://www.jrc.co.jp/eng/>

**Main Office:** 1-1, Shimorenjaku 5-chome, Mitaka-shi, Tokyo 181-8510, Japan  
 Telephone: +81-422-45-9867  
 Facsimile: +81-422-45-9969

**Overseas Branches :** Seattle, Amsterdam, Athens  
**Liaison Offices :** Taipei, Manila, Jakarta, Singapore, Hanoi, New York



ISO9001, ISO14001 Certified