



5. MAINTENANCE AND INSPECTION

The performance and longevity of this equipment depends on careful maintenance. To maintain optimum performance, the following periodic inspections are highly recommended.

- (1) Keep the power supply voltage within the specified range.

 WARNING	
	<p>With the exception of qualified service personnel, do not attempt to inspect or service the interior of this equipment, as doing so may cause fire, electric shock, or malfunction.</p> <p>Each internal circuit has been fine-tuned. Therefore, be sure not to tune or modify without measuring instruments. If any malfunctions are detected, contact our service center or agents as soon as possible.</p>

5.1 General Maintenance and Inspection

The following table describes the general maintenance and inspection that can be performed with a few common tools.

Number	Item	Maintenance and Inspection
1	Cleaning	Gently clean the surface of the panel, knobs, switches, and top/bottom covers with a soft cloth and silicon oil. Remove dust in the unit using a brush or vacuum cleaner. No oil is needed because this unit has no moving mechanisms inside.
2	Looseness of parts	Inspect for looseness and correctly tighten the following: Screws, nuts, knobs, switches, variable resistors, connectors, and relays inserted into sockets
3	Fuse	If the power source fuse is blown, be sure to determine the cause before replacing it. One spare fuse is included with the equipment.
4	Unit	Remove the plug-in unit from the main chassis to inspect mounted parts for any change in color, burn marks, or other damage. To exchange parts, call our service center or agents.

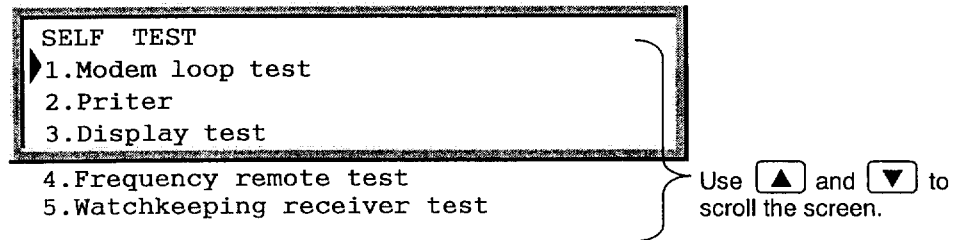
5.2 Maintenance Function in MENU

The NCT-196 DSC terminal has a MENU function (self-tests and displaying ROM version) that can be used to perform the following checks.

5.2.1 Self Diagnosis

The DSC terminal itself is equipped with a self-test function for checking its internal circuits. Although this self-test function can be used to check its internal operation, the operator must still make a decision. If, as a result of the self test, operation is found to be faulty or an error message is displayed, go to Section 5.2.3, "Troubleshooting" to determine the appropriate corrective actions.

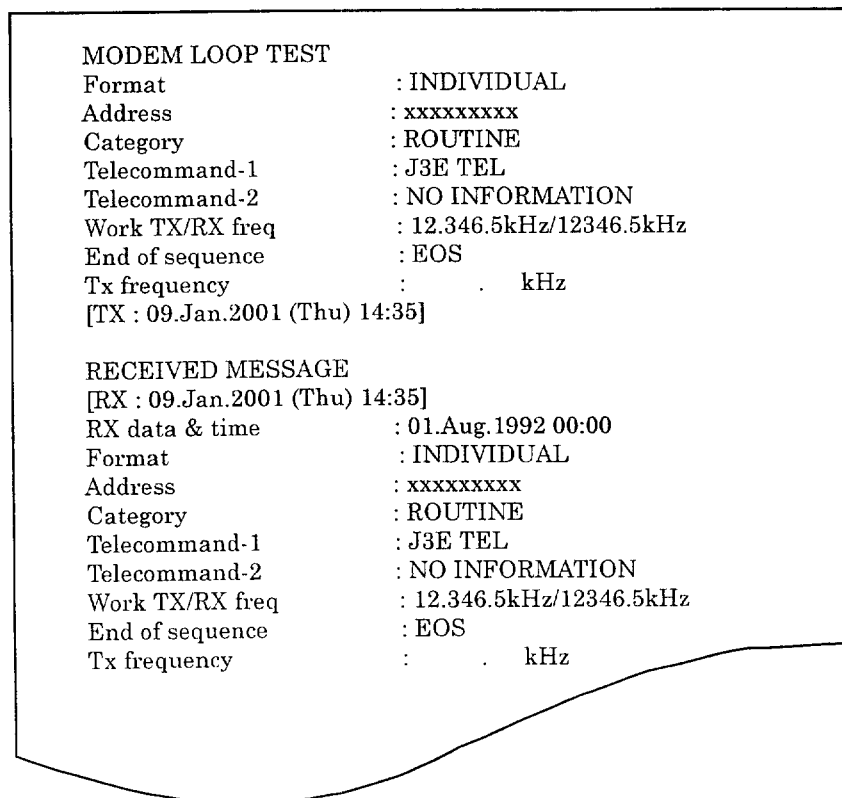
From the "MENU#2-READOUT&SETUP" screen, press **4** and then press **ENT**.
The "SELF TEST" screen is displayed.



● Modem loop test

A test message is transmitted and received internally by the DSC terminal (it is not output from the radio), and the self-test function checks that the message is transmitted and received normally. The transmitted message and received message are displayed on the screen. If a printer is connected, both messages are also printed out. Check that the messages are the same as each other.

When you run this test, the message is received in about ● seconds, and execution returns to the "SELF TEST" screen.



Even though the connected printer operates normally, the DSC terminal may be faulty if this test cannot be completed successfully.

● Watchkeeping receiver test

When you select this item, the self tests start and the following screen is automatically displayed.
To abort the test, press **STOP** or **Func 4** (QUIT).

WATCHKEEPING RECEIVER TEST

On completion of the test, the result is displayed as follows:

No abnormality detected:

RESULT : OK

Abnormality detected:

- CAF-450 abnormality detected

RESULT : CAF-450 W/K RF AMP NG

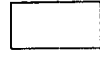
- CDJ-1701 abnormality detected

RESULT : CDJ-1701 W/K CONTROL NG

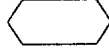
- +12V power supply abnormality detected

RESULT : +12V POWER SUPPLY NG

5.2.2 Troubleshooting

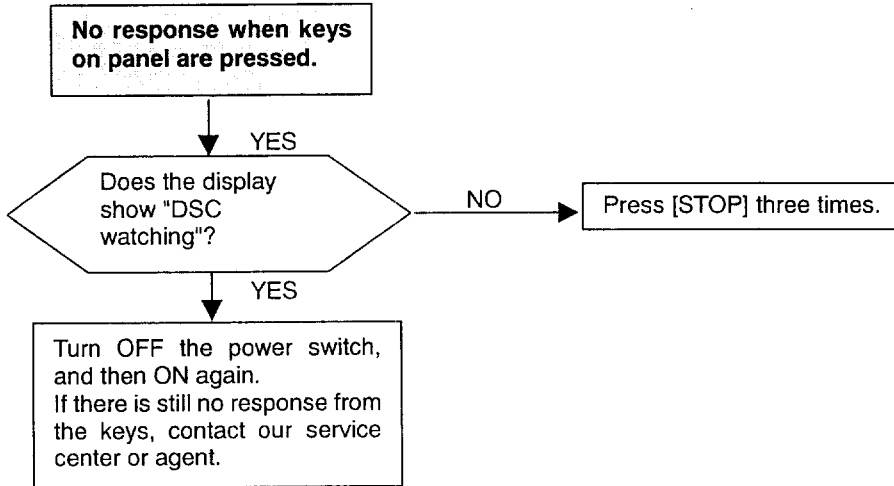


Each rectangle indicates a process.

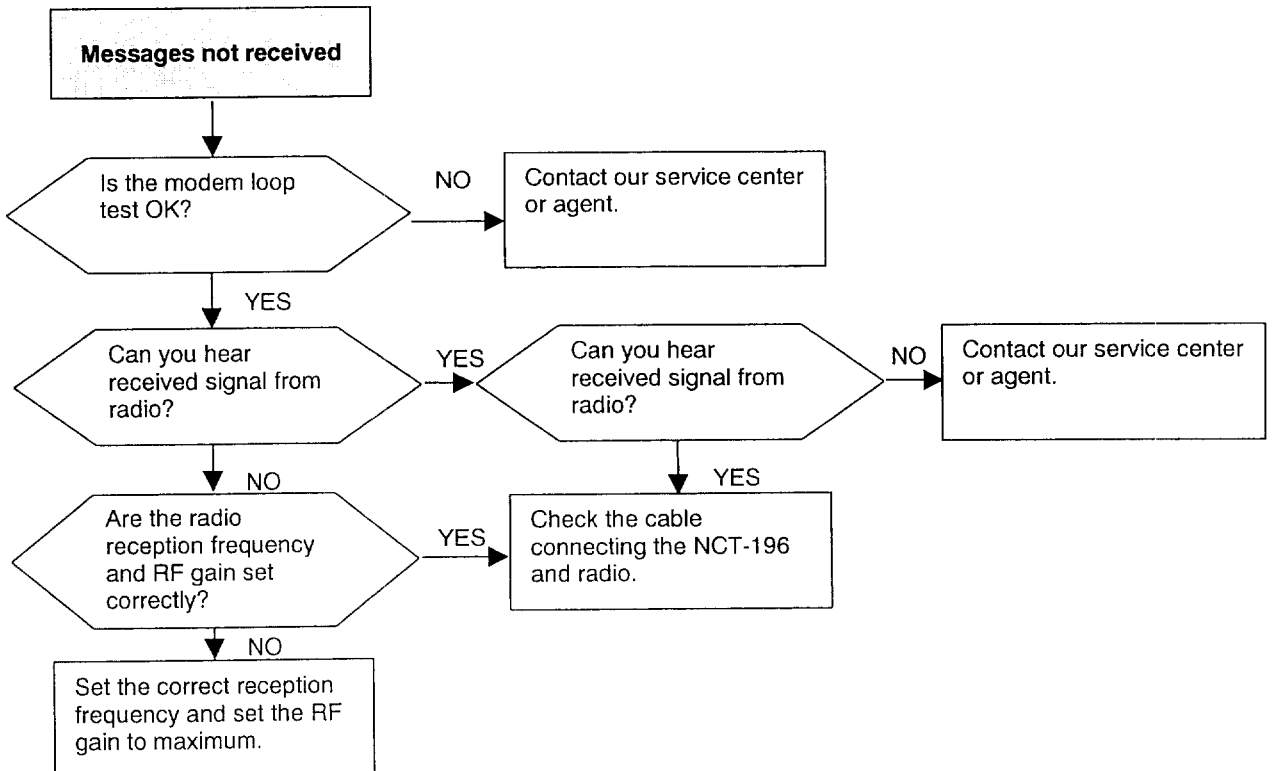


Each hexagon indicates a decision.

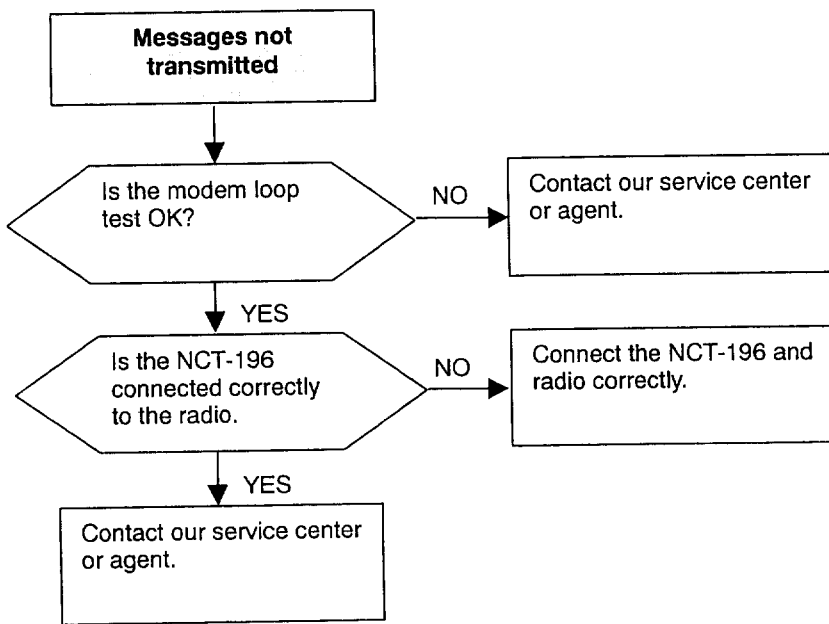
● No response from keys



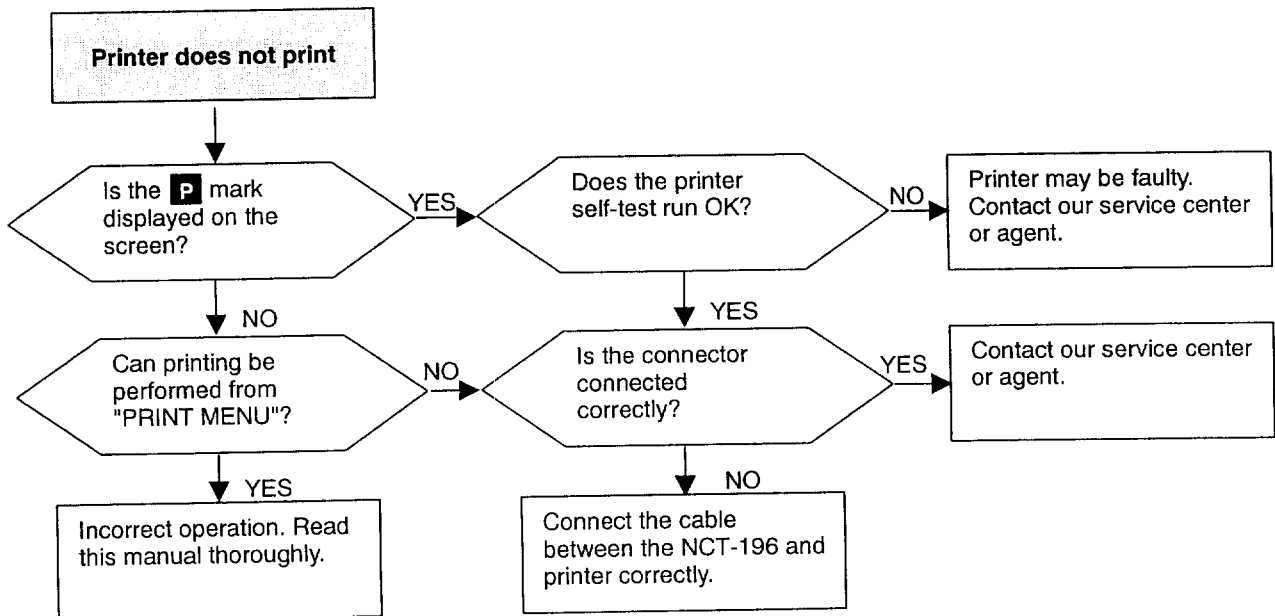
● Messages not received



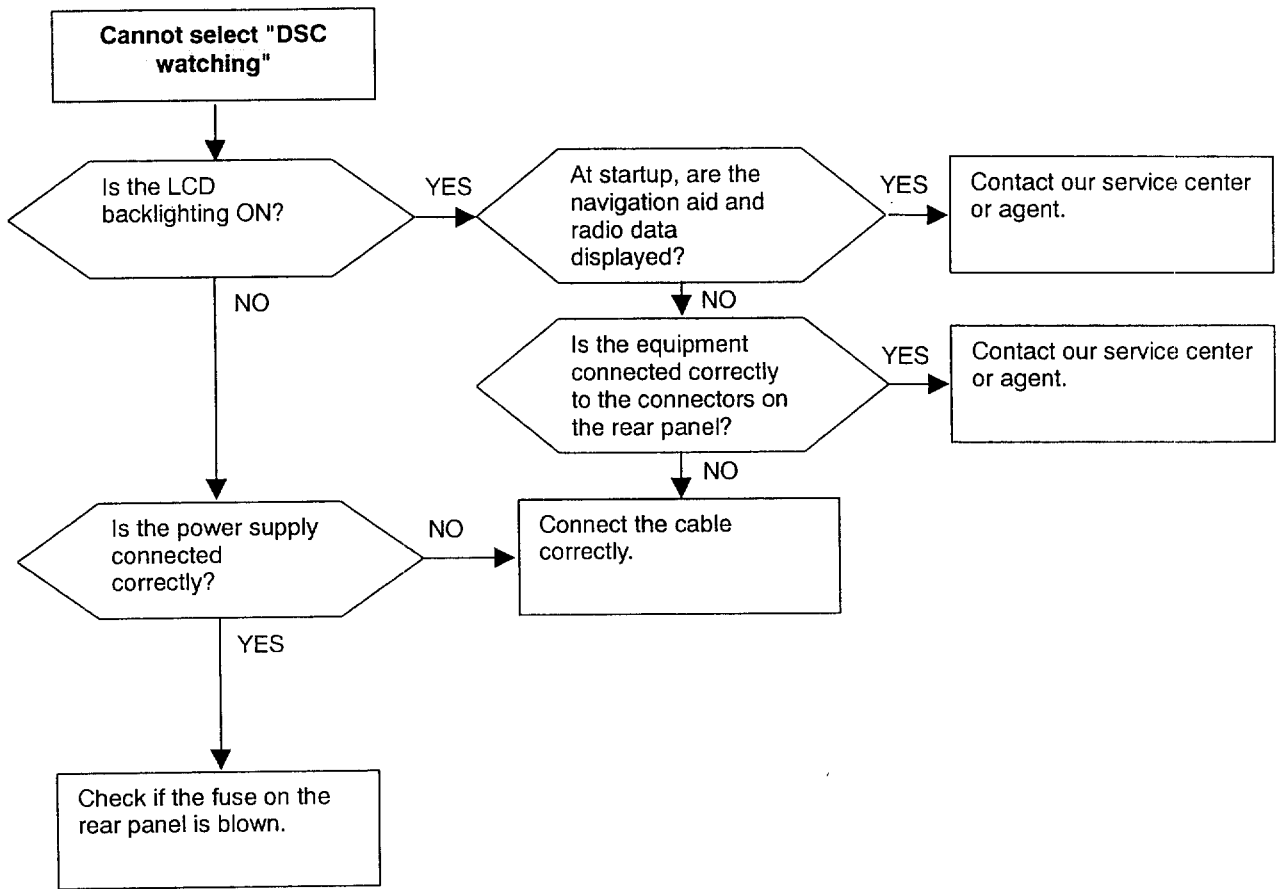
● Messages not transmitted



● Printer does not print.



● Cannot select "DSC watching"



5.2.3 Actual Communication Test Using DSC Distress and Safety Call Frequency

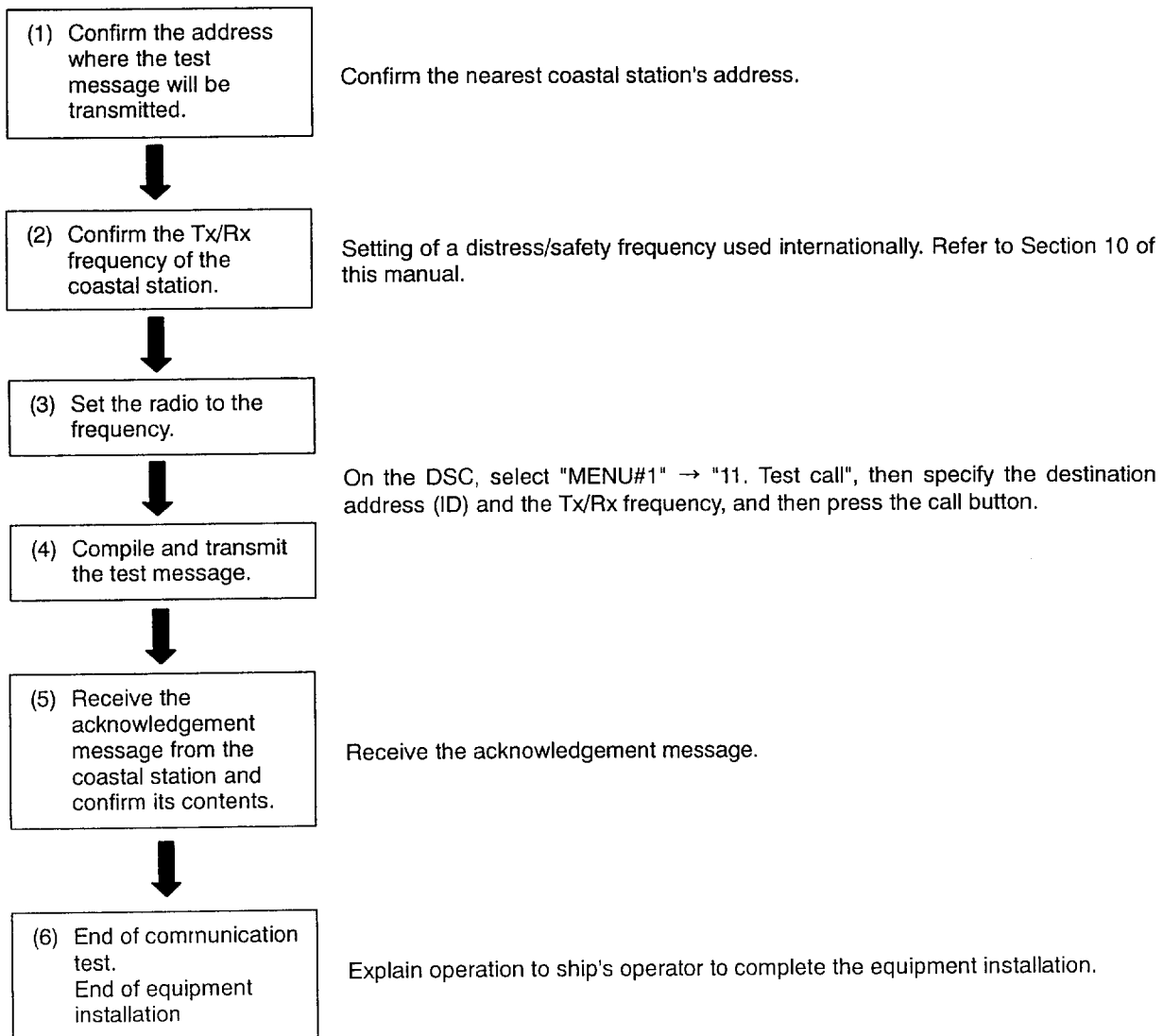
Refrain from testing on a frequency used for DSC distress and safety calls. However, if such a test cannot be avoided, get permission from the targeted coastal station prior to performing the test.

The message for a test is fixed, as shown below. Do not send any other messages. Because the propagation area is particularly wide when the MF/HF band is used, sending other message may be a nuisance to other ships and/or coastal stations.

【The message transmitted by a test】

FORMAT	: INDIVIDUAL	(Fixed: Individual call)
ADDRESS	: XXXXXXXXX	(Input: The destination address for the ship)
CATEGORY	: SAFETY	(Fixed: Safety)
TELECOMMAND 1	: TEST	(Fixed: Test)
TELECOMMAND 2	: NO INFORMATION	(Fixed: No information)
WORKING TX/RX FREQUENCY	: NONE/NONE	(Fixed: No specified work frequency)
END OF SEQUENCE	: ACK RQ	(Fixed: Requirement of acknowledgement)

Only an address needs to be input in the test message. Other information for formatting the test call sequence is preprogrammed into the NCT-196. The actual procedure is as follows:



6. AFTER-SALES SERVICE

Before requesting repair

If what appears to be a fault is detected, refer to Section 5.2.2, "Troubleshooting" to check if the equipment is actually faulty before requesting repairs. If the fault persists, immediately stop operation and call our service center or agents.

- During the warranty period, we or our agencies will repair the fault without any fee.
- After the warranty expires, we will repair the fault for a fee, if repair is possible.
- Items for notification:
 - ☆ Product name, type, manufactured date, serial number, ROM version
 - ☆ Information about the fault (the more detailed, the better)
 - ☆ Your company or organization name, address, and phone number

Periodical maintenance recommended

Performance of this equipment may degrade over time because parts age, although degradation depends on how this unit has been used.

We recommend periodic professional maintenance checks in addition to daily maintenance.

Call our service center or agents for periodic professional maintenance. Note that this maintenance is subject to a service charge.

Call our office or the nearest agency for detailed information about after-sales service.

7. SPECIFICATIONS

7.1 DSC Unit

(1) System

Communications protocol:	In conformity with ITU-R regulation Nos. 493 and 541
Emission:	F1B/J2B 100 baud (MF/HF)
Code:	10 units error detection specified by IRU-R 493.
Programming frequency:	1) Six distress call frequencies pre-programmed 2) Six calling frequencies (registered by user)
Scanning:	Serial control
Memory capacity:	1) Received messages: Distress messages: 20 Other messages: 20 2) Transmitted message: 11
Clock:	Within +/- 20ppm
Data backup time:	24 hours (message content and time data)

(2) LCD

Characters per line:	40
Lines:	4
Backlighting:	LED

(3) Radio equipment interface

Modulator

Modulation speed:	100baud +/-30ppm
Modulation method:	AFSK (phase continuous FSK)
Mark frequency:	1615+/-0.5Hz
Space frequency:	1785+/-0.5Hz
Output level:	0dBm (-20 to +10dBm variable/600 ohms balanced)

Demodulator

Input frequency :	1700+/-85Hz
Input level :	-25 to +10dBm (600-ohm balanced load)

(4) Navigation aid interface

Conforms to RS-422 NMEA0183/JRC format

• NMEA0183

【Receivable data format】

RMC:	Position, UTC time, date, and speed
GLL:	Position and UTC time
ZDA:	UTC time and date
ZZU:	UTC time
ZLZ:	UTC time

• JRC format

The data on position, time, and date are received.

CAUTION



In the JRC format, setting a time difference on the navigation aid results in the local time being output, not the UTC time. Ask your service engineer to set the time difference to "0", or use the NMEA0183 format.

(5) Printer interface Centronics

7.2 Watchkeeping Receiver

Receiving frequencies:	2187.5kHz, 4207.5kHz, 6312kHz, 8414.5kHz, 12577kHz, 16804.5kHz
Scanning frequencies:	(a) Scanning within two seconds of any frequencies selected from the following: 2187.5, 4207.5, 6312, 8414.5, and 16804.5kHz (b) Scanning stops on detection of 100 baud dot pattern.
Receiving system:	Double superheterodyne
1st IF:	40.455MHz
2nd IF:	455kHz
Local oscillator frequency:	1st oscillation frequency: 42.6425 to 57.2595MHz 2nd oscillation frequency: 40MHz
Reception mode:	F1B/J2B
Sensitivity:	Symbol error rate of 1% or better at 1 microvolt input
Selectivity:	6dB bandwidth, 270 to 300Hz 30dB bandwidth, within +/-330Hz 60dB bandwidth, within +/-550Hz
Spurious response (F1B):	The symbol error rate is 1% or better when a 10 microvolt wanted signal and a 31.6mV unmodulated interference signal of 9kHz to 2GHz at least 750Hz apart from the wanted signal are input.
Blocking (F1B):	The symbol error rate is 1% or better when a 10 microvolt wanted signal and a 1 microvolt interference signal at least 500Hz apart from the wanted signal are input.
Frequency stability:	Within +/-10Hz after 1-minute warmup
Spurious emission:	4000 micro-microW or less
Antenna impedance:	50 ohms unbalanced
Function:	Self-test

7.3 Environment and Mechanical Specifications

(1) Environmental conditions

DC power supply:	13.6VDC
Consumption:	36VA max.
Operating temperature range:	-15 to +55°C
Storage temperature range:	-25 to +65°C
Relative humidity:	93% (at +40°C)
Continuous operation:	Operating continuously and correctly 24 hours a day under normal temperature and humidity

(2) Equipment Dimensions

External dimensions:	250mm (w) x 100mm (h) x 260mm (d)
Weight:	4.8kg
Installation:	
Vibration:	300 to 750cpm: Full amplitude=3.2mm 750 to 1500cpm: Full amplitude=0.8mm 1500 to 3000cpm: Full amplitude=0.2mm

8. APPENDIX

8.1 Allocation of ITU Channels

		Telephone (USB)			DSC			Morse (CW)			Telex (TLX)			
		Dup			Emerg.			Call			Pair			
I T U C h a n n e l s	4MHz	Dup	27	401~427	Emerg.	1	401	Call	10	401~410	Pair	19	401~419	
		Simp	2	428~429	Other.	3	402~404	Work	31	411~441	Non	10	420~429	
	6MHz	Dup	8	601~608	Emerg.	1	601	Call	10	601~610	Pair	34	601~634	
		Simp	3	609~611	Other.	3	602~604	Work	31	611~641	Non	23	635~657	
	8MHz	Dup	33	801~833	Emerg.	1	801	Call	10	801~810	Pair	40	801~840	
		Simp	2	834~835	Other.	3	802~804	Work	59	811~869	Non	36	841~876	
	12MHz	Dup	41	1201~1241	Emerg.	1	1201	Call	10	1201~1210	Pair	156	1201~12156	
		Simp	5	1242~1246	Other.	3	1202~1204	Work	110	1211~12120	Non	34	12157~12190	
	16MHz	Dup	56	1601~1656	Emerg.	1	1601	Call	10	1601~1610	Pair	193	1601~16193	
		Simp	7	1657~1663	Other.	3	1602~1604	Work	129	1611~16139	Non	39	16194~16232	
	18MHz	Dup	15	1801~1815	--	--	--	--	--	--	Pair	45	1801~1845	
		Simp	7	1816~1822	Other.	3	1801~1803	--	--	--	Non	11	1846~1856	
	22MHz	Dup	53	2201~2253	--	--	--	Call	10	2201~2210	Pair	135	2201~22135	
		Simp	7	2254~2260	Other.	3	2201~2203	Work	75	2211~2285	Non	45	22136~22180	
	25MHz	Dup	10	2501~2510	--	--	--	Call	4	2501~2504	Pair	40	2501~2540	
		Simp	7	2511~2517	Other.	3	2501~2503	Work	20	2505~2524	Non	31	2541~2571	
	Subtotal		283			29			519			891		
	Total		1722											

Channel			Channel			Channel			Channel		
Designator	Ship Tx	Ship Rx	Designator	Ship Tx	Ship Rx	Designator	Ship Tx	Ship Rx	Designator	Ship Tx	Ship Rx
(Telephone allocation)			820	8252.0	8776.0	1246		12365.0	1661		16540.0
401	4065.0	4357.0	821	8255.0	8779.0				1662		16543.0
402	4068.0	4360.0	822	8258.0	8782.0	1601	16360.0	17242.0	1663		16546.0
403	4071.0	4363.0	823	8261.0	8785.0	1602	16363.0	17245.0			
404	4074.0	4366.0	824	8264.0	8788.0	1603	16366.0	17248.0	1801	18780.0	19755.0
405	4077.0	4369.0	825	8267.0	8791.0	1604	16369.0	17251.0	1802	18783.0	19758.0
406	4080.0	4372.0	826	8270.0	8794.0	1605	16372.0	17254.0	1803	18786.0	19761.0
407	4083.0	4375.0	827	8273.0	8797.0	1606	16375.0	17257.0	1804	18789.0	19764.0
408	4086.0	4378.0	828	8276.0	8800.0	1607	16378.0	17260.0	1805	18792.0	19767.0
409	4089.0	4381.0	829	8279.0	8803.0	1608	16381.0	17263.0	1806	18795.0	19770.0
410	4092.0	4384.0	830	8282.0	8806.0	1609	16384.0	17266.0	1807	18798.0	19773.0
411	4095.0	4387.0	831	8285.0	8809.0	1610	16387.0	17269.0	1808	18801.0	19776.0
412	4098.0	4390.0	832	8288.0	8812.0	1611	16390.0	17272.0	1809	18804.0	19779.0
413	4101.0	4393.0	833	*8291.0	8291.0	1612	16393.0	17275.0	1810	18807.0	19782.0
414	4104.0	4396.0	834		8294.0	1613	16396.0	17278.0	1811	18810.0	19785.0
415	4107.0	4399.0	835		8297.0	1614	16399.0	17281.0	1812	18813.0	19788.0
416	4110.0	4402.0				1615	16402.0	17284.0	1813	18816.0	19791.0
417	4113.0	4405.0	1201	12230.0	13077.0	1616	16405.0	17287.0	1814	18819.0	19794.0
418	4116.0	4408.0	1202	12233.0	13080.0	1617	16408.0	17290.0	1815	18822.0	19797.0
419	4119.0	4411.0	1203	12236.0	13083.0	1618	16411.0	17293.0	1816		18825.0
420	4122.0	4414.0	1204	12239.0	13086.0	1619	16414.0	17296.0	1817		18828.0
421	4125.0	4417.0	1205	12242.0	13089.0	1620	16417.0	17299.0	1818		18831.0
422	4128.0	4420.0	1206	12245.0	13092.0	1621	16420.0	17302.0	1819		18834.0
423	4131.0	4423.0	1207	12248.0	13095.0	1622	16423.0	17305.0	1820		18837.0
424	4134.0	4426.0	1208	12251.0	13098.0	1623	16426.0	17308.0	1821		18840.0
425	4137.0	4429.0	1209	12254.0	13101.0	1624	16429.0	17311.0	1822		18843.0
426	4140.0	4432.0	1210	12257.0	13104.0	1625	16432.0	17314.0			
427	4143.0	4435.0	1211	12260.0	13107.0	1626	16435.0	17317.0	2201	22000.0	22696.0
428		4146.0	1212	12263.0	13110.0	1627	16438.0	17320.0	2202	22003.0	22699.0
429		4149.0	1213	12266.0	13113.0	1628	16441.0	17323.0	2203	22006.0	22702.0
			1214	12269.0	13116.0	1629	16444.0	17326.0	2204	22009.0	22705.0
601	6200.0	6501.0	1215	12272.0	13119.0	1630	16447.0	17329.0	2205	22012.0	22708.0
602	6203.0	6504.0	1216	12275.0	13122.0	1631	16450.0	17332.0	2206	22015.0	22711.0
603	6206.0	6507.0	1217	12278.0	13125.0	1632	16453.0	17335.0	2207	22018.0	22714.0
604	6209.0	6510.0	1218	12281.0	13128.0	1633	16456.0	17338.0	2208	22021.0	22717.0
605	6212.0	6513.0	1219	12284.0	13131.0	1634	16459.0	17341.0	2209	22024.0	22720.0
606	6215.0	6516.0	1220	12287.0	13134.0	1635	16462.0	17344.0	2210	22027.0	22723.0
607	6218.0	6519.0	1221	12290.0	13137.0	1636	16465.0	17347.0	2211	22030.0	22726.0
608	6221.0	6522.0	1222	12293.0	13140.0	1637	16468.0	17350.0	2212	22033.0	22729.0
609		6224.0	1223	12296.0	13143.0	1638	16471.0	17353.0	2213	22036.0	22732.0
610		6227.0	1224	12299.0	13146.0	1639	16474.0	17356.0	2214	22039.0	22735.0
611		6230.0	1225	12302.0	13149.0	1640	16477.0	17359.0	2215	22042.0	22738.0
			1226	12305.0	13152.0	1641	16480.0	17362.0	2216	22045.0	22741.0
801	8195.0	8719.0	1227	12308.0	13155.0	1642	16483.0	17365.0	2217	22048.0	22744.0
802	8198.0	8722.0	1228	12311.0	13158.0	1643	16486.0	17368.0	2218	22051.0	22747.0
803	8201.0	8725.0	1229	12314.0	13161.0	1644	16489.0	17371.0	2219	22054.0	22750.0
804	8204.0	8728.0	1230	12317.0	13164.0	1645	16492.0	17374.0	2220	22057.0	22753.0
805	8207.0	8731.0	1231	12320.0	13167.0	1646	16495.0	17377.0	2221	22060.0	22756.0
806	8210.0	8734.0	1232	12323.0	13170.0	1647	16498.0	17380.0	2222	22063.0	22759.0
807	8213.0	8737.0	1233	12326.0	13173.0	1648	16501.0	17383.0	2223	22066.0	22762.0
808	8216.0	8740.0	1234	12329.0	13176.0	1649	16504.0	17386.0	2224	22069.0	22765.0
809	8219.0	8743.0	1235	12332.0	13179.0	1650	16507.0	17389.0	2225	22072.0	22768.0
810	8222.0	8746.0	1236	12335.0	13182.0	1651	16510.0	17392.0	2226	22075.0	22771.0
811	8225.0	8749.0	1237	12338.0	13185.0	1652	16513.0	17395.0	2227	22078.0	22774.0
812	8228.0	8752.0	1238	12341.0	13188.0	1653	16516.0	17398.0	2228	22081.0	22777.0
813	8231.0	8755.0	1239	12344.0	13191.0	1654	16519.0	17401.0	2229	22084.0	22780.0
814	8234.0	8758.0	1240	12347.0	13194.0	1655	16522.0	17404.0	2230	22087.0	22783.0
815	8237.0	8761.0	1241	12350.0	13197.0	1656	16525.0	17407.0	2231	22090.0	22786.0
816	8240.0	8764.0	1242		12353.0	1657		16528.0	2232	22093.0	22789.0
817	8243.0	8767.0	1243		12356.0	1658		16531.0	2233	22096.0	22792.0
818	8246.0	8770.0	1244		12359.0	1659		16534.0	2234	22099.0	22795.0
819	8249.0	8773.0	1245		12362.0	1660		16537.0	2235	22102.0	22798.0

Channel			Channel			Channel			Channel		
Designator	Ship Tx	Ship Rx	Designator	Ship Tx	Ship Rx	Designator	Ship Tx	Ship Rx	Designator	Ship Tx	Ship Rx
(Telephone allocation)			1202	12577.5	12657.0	441	4202.0		819	8346.0	
2236	22105.0	22801.0	1203	12578.0	12657.5				820	8346.5	
2237	22108.0	22804.0	1204	12578.5	12658.0	601	6277.0		821	8347.0	
2238	22111.0	22807.0				602	6277.5		822	8347.5	
2239	22114.0	22810.0	1601	16804.5		603	6276.0		823	8348.0	
2240	22117.0	22813.0	1602	16805.0	16903.0	604	6276.5		824	8348.5	
2241	22120.0	22816.0	1603	16805.5	16903.5	605	6278.0		825	8349.0	
2242	22123.0	22819.0	1604	16806.0	16904.0	606	6278.5		826	8349.5	
2243	22126.0	22822.0				607	6279.0		827	8350.0	
2244	22129.0	22825.0	1801	18898.5	19703.5	608	6279.5		828	8350.5	
2245	22132.0	22828.0	1802	18899.0	19704.0	609	6280.0		829	8351.0	
2246	22135.0	22831.0	1803	18899.5	19704.5	610	6280.5		830	8351.5	
2247	22138.0	22834.0				611	6285.0		831	8352.0	
2248	22141.0	22837.0	2201	22374.5	22444.0	612	6285.5		832	8352.5	
2249	22144.0	22840.0	2202	22375.0	22444.5	613	6286.0		833	8353.0	
2250	22147.0	22843.0	2203	22375.5	22445.0	614	6286.5		834	8353.5	
2251	22150.0	22846.0				615	6287.0		835	8354.0	
2252	22153.0	22849.0	2501	25208.5	26121.0	616	6287.5		836	8354.5	
2253	22156.0	22852.0	2502	25209.0	26121.5	617	6288.0		837	8355.0	
2254	22159.0		2503	25209.5	26122.0	618	6288.5		838	8355.5	
2255	22162.0					619	6289.0		839	8356.0	
2256	22165.0		(Morse allocation)			620	6289.5		840	8356.5	
2257	22168.0		401	4182.0		621	6290.0		841	8357.0	
2258	22171.0		402	4182.5		622	6290.5		842	8357.5	
2259	22174.0		403	4184.0		623	6291.0		843	8358.0	
2260	22177.0		404	4184.5		624	6291.5		844	8358.5	
			405	4183.0		625	6292.0		845	8359.0	
2501	25070.0	26145.0	406	4183.5		626	6292.5		846	8359.5	
2502	25073.0	26148.0	407	4185.0		627	6293.0		847	8360.0	
2503	25076.0	26151.0	408	4185.5		628	6293.5		848	8360.5	
2504	25079.0	26154.0	409	4186.0		629	6294.0		849	8361.0	
2505	25082.0	26157.0	410	4186.5		630	6294.5		850	8361.5	
2506	25085.0	26160.0	411	4187.0		631	6295.0		851	8362.0	
2507	25088.0	26163.0	412	4187.5		632	6295.5		852	8362.5	
2508	25091.0	26166.0	413	4188.0		633	6296.0		853	8363.0	
2509	25094.0	26169.0	414	4188.5		634	6296.5		854	8363.5	
2510	25097.0	26172.0	415	4189.0		635	6297.0		855	8364.0	
2511	25100.0		416	4189.5		636	6297.5		856	8364.5	
2512	25103.0		417	4190.0		637	6298.0		857	8365.0	
2513	25106.0		418	4190.5		638	6298.5		858	8365.5	
2514	25109.0		419	4191.0		639	6299.0		859	8371.0	
2515	25112.0		420	4191.5		640	6299.5		860	8371.5	
2516	25115.0		421	4192.0		641	6300.0		861	8372.0	
2517	25118.0		422	4192.5					862	8372.5	
			423	4193.0		801	8366.0		863	8373.0	
			424	4193.5		802	8366.5		864	8373.5	
(DSC allocation)			425	4194.0		803	8368.0		865	8374.0	
401	4207.5		426	4194.5		804	8369.0		866	8374.5	
402	4208.0	4219.5	427	4195.0		805	8367.0		867	8375.0	
403	4208.5	4220.0	428	4195.5		806	8367.5		868	8375.5	
404	4209.0	4220.5	429	4196.0		807	8368.5		869	8376.0	
			430	4196.5		808	8369.5				
601	6312.0		431	4197.0		809	8370.0		1201	12550.0	
602	6312.5	6331.0	432	4197.5		810	8370.5		1202	12550.5	
603	6313.0	6331.5	433	4198.0		811	8342.0		1203	12552.0	
604	6313.5	6332.0	434	4198.5		812	8342.5		1204	12553.5	
			435	4199.0		813	8343.0		1205	12551.0	
801	8414.5		436	4199.5		814	8343.5		1206	12551.5	
802	8415.0	8436.5	437	4200.0		815	8344.0		1207	12552.5	
803	8415.5	8437.0	438	4200.5		816	8344.5		1208	12553.0	
804	8416.0	8437.5	439	4201.0		817	8345.0		1209	12554.0	
			440	4201.5		818	8345.5		1210	12554.5	
1201	12577.0										

Channel			Channel			Channel			Channel		
Designator	Ship Tx	Ship Rx	Designator	Ship Tx	Ship Rx	Designator	Ship Tx	Ship Rx	Designator	Ship Tx	Ship Rx
(Morse allocation)			1272		12452.5	1613		16620.0	1675		16651.0
1211		12422.0	1273		12453.0	1614		16620.5	1676		16651.5
1212		12422.5	1274		12453.5	1615		16621.0	1677		16652.0
1213		12423.0	1275		12454.0	1616		16621.5	1678		16652.5
1214		12423.5	1276		12454.5	1617		16622.0	1679		16653.0
1215		12424.0	1277		12455.0	1618		16622.5	1680		16653.5
1216		12424.5	1278		12455.5	1619		16623.0	1681		16654.0
1217		12425.0	1279		12456.0	1620		16623.5	1682		16654.5
1218		12425.5	1280		12456.5	1621		16624.0	1683		16655.0
1219		12426.0	1281		12457.0	1622		16624.5	1684		16655.5
1220		12426.5	1282		12457.5	1623		16625.0	1685		16656.0
1221		12427.0	1283		12458.0	1624		16625.5	1686		16656.5
1222		12427.5	1284		12458.5	1625		16626.0	1687		16657.0
1223		12428.0	1285		12459.0	1626		16626.5	1688		16657.5
1224		12428.5	1286		12459.5	1627		16627.0	1689		16658.0
1225		12429.0	1287		12460.0	1628		16627.5	1690		16658.5
1226		12429.5	1288		12460.5	1629		16628.0	1691		16659.0
1227		12430.0	1289		12461.0	1630		16628.5	1692		16659.5
1228		12430.5	1290		12461.5	1631		16629.0	1693		16660.0
1229		12431.0	1291		12462.0	1632		16629.5	1694		16660.5
1230		12431.5	1292		12462.5	1633		16630.0	1695		16661.0
1231		12432.0	1293		12463.0	1634		16630.5	1696		16661.5
1232		12432.5	1294		12463.5	1635		16631.0	1697		16662.0
1233		12433.0	1295		12464.0	1636		16631.5	1698		16662.5
1234		12433.5	1296		12464.5	1637		16632.0	1699		16663.0
1235		12434.0	1297		12465.0	1638		16632.5	16100		16663.5
1236		12434.5	1298		12465.5	1639		16633.0	16101		16664.0
1237		12435.0	1299		12466.0	1640		16633.5	16102		16664.5
1238		12435.5	12100		12466.5	1641		16634.0	16103		16665.0
1239		12436.0	12101		12467.0	1642		16634.5	16104		16665.5
1240		12436.5	12102		12467.5	1643		16635.0	16105		16666.0
1241		12437.0	12103		12468.0	1644		16635.5	16106		16666.5
1242		12437.5	12104		12468.5	1645		16636.0	16107		16667.0
1243		12438.0	12105		12469.0	1646		16636.5	16108		16667.5
1244		12438.5	12106		12469.5	1647		16637.0	16109		16668.0
1245		12439.0	12107		12470.0	1648		16637.5	16110		16668.5
1246		12439.5	12108		12470.5	1649		16638.0	16111		16669.0
1247		12440.0	12109		12471.0	1650		16638.5	16112		16669.5
1248		12440.5	12110		12471.5	1651		16639.0	16113		16670.0
1249		12441.0	12111		12472.0	1652		16639.5	16114		16670.5
1250		12441.5	12112		12472.5	1653		16640.0	16115		16671.0
1251		12442.0	12113		12473.0	1654		16640.5	16116		16671.5
1252		12442.5	12114		12473.5	1655		16641.0	16117		16672.0
1253		12443.0	12115		12474.0	1656		16641.5	16118		16672.5
1254		12443.5	12116		12474.5	1657		16642.0	16119		16673.0
1255		12444.0	12117		12475.0	1658		16642.5	16120		16673.5
1256		12444.5	12118		12475.5	1659		16643.0	16121		16674.0
1257		12445.0	12119		12476.0	1660		16643.5	16122		16674.5
1258		12445.5	12120		12476.5	1661		16644.0	16123		16675.0
1259		12446.0				1662		16644.5	16124		16675.5
1260		12446.5	1601		16734.0	1663		16645.0	16125		16676.0
1261		12447.0	1602		16734.5	1664		16645.5	16126		16676.5
1262		12447.5	1603		16736.0	1665		16646.0	16127		16677.0
1263		12448.0	1604		16738.0	1666		16646.5	16128		16677.5
1264		12448.5	1605		16735.0	1667		16647.0	16129		16678.0
1265		12449.0	1606		16735.5	1668		16647.5	16130		16678.5
1266		12449.5	1607		16736.5	1669		16648.0	16131		16679.0
1267		12450.0	1608		16737.0	1670		16648.5	16132		16679.5
1268		12450.5	1609		16737.5	1671		16649.0	16133		16680.0
1269		12451.0	1610		16738.5	1672		16649.5	16134		16680.5
1270		12451.5	1611		16619.0	1673		16650.0	16135		16681.0
1271		12452.0	1612		16619.5	1674		16650.5	16136		16681.5

Channel			Channel			Channel			Channel		
Designator	Ship Tx	Ship Rx	Designator	Ship Tx	Ship Rx	Designator	Ship Tx	Ship Rx	Designator	Ship Tx	Ship Rx
(Morse allocation)			2258		22265.5	408	4176.0	4214.0	640		6303.0
16137	16682.0		2259		22266.0	409	4176.5	4214.5	641		6303.5
16138	16682.5		2260		22266.5	410	4177.0	4215.0	642		6304.0
16139	16683.0		2261		22267.0	411	*4177.5	4177.5	643		6304.5
			2262		22267.5	412	4178.0	4215.5	644		6305.0
2201	22279.5		2263		22268.0	413	4178.5	4216.0	645		6305.5
2202	22280.0		2264		22268.5	414	4179.0	4216.5	646		6306.0
2203	22280.5		2265		22269.0	415	4179.5	4217.0	647		6306.5
2204	22281.0		2266		22269.5	416	4180.0	4217.5	648		6307.0
2205	22281.5		2267		22270.0	417	4180.5	4218.0	649		6307.5
2206	22282.0		2268		22270.5	418	4181.0	4218.5	650		6308.0
2207	22282.5		2269		22271.0	419	4181.5	4219.0	651		6308.5
2208	22283.0		2270		22271.5	420	4202.5		652		6309.0
2209	22283.5		2271		22272.0	421	4203.0		653		6309.5
2210	22284.0		2272		22272.5	422	4203.5		654		6310.0
2211	22242.0		2273		22273.0	423	4204.0		655		6310.5
2212	22242.5		2274		22273.5	424	4204.5		656		6311.0
2213	22243.0		2275		22274.0	425	4205.0		657		6311.5
2214	22243.5		2276		22274.5	426	4205.5				
2215	22244.0		2277		22275.0	427	4206.0		801	*8376.5	8376.5
2216	22244.5		2278		22275.5	428	4206.5		802	8377.0	8417.0
2217	22245.0		2279		22276.0	429	4207.0		803	8377.5	8417.5
2218	22245.5		2280		22276.5				804	8378.0	8418.0
2219	22246.0		2281		22277.0	601	6263.0	6314.5	805	8378.5	8418.5
2220	22246.5		2282		22277.5	602	6263.5	6315.0	806	8379.0	8419.0
2221	22247.0		2283		22278.0	603	6264.0	6315.5	807	8379.5	8419.5
2222	22247.5		2284		22278.5	604	6264.5	6316.0	808	8380.0	8420.0
2223	22248.0		2285		22279.0	605	6265.0	6316.5	809	8380.5	8420.5
2224	22248.5					606	6265.5	6317.0	810	8381.0	8421.0
2225	22249.0		2501		25171.5	607	6266.0	6317.5	811	8381.5	8421.5
2226	22249.5		2502		25172.0	608	6266.5	6318.0	812	8382.0	8422.0
2227	22250.0		2503		25171.5	609	6267.0	6318.5	813	8382.5	8422.5
2228	22250.5		2504		25172.5	610	6267.5	6319.0	814	8383.0	8423.0
2229	22251.0		2505		25161.5	611	*6268.0	6268.0	815	8383.5	8423.5
2230	22251.5		2506		25162.0	612	6268.5	6319.5	816	8384.0	8424.0
2231	22252.0		2507		25162.5	613	6269.0	6320.0	817	8384.5	8424.5
2232	22252.5		2508		25163.0	614	6269.5	6320.5	818	8385.0	8425.0
2233	22253.0		2509		25163.5	615	6270.0	6321.0	819	8385.5	8425.5
2234	22253.5		2510		25164.0	616	6270.5	6321.5	820	8386.0	8426.0
2235	22254.0		2511		25164.5	617	6271.0	6322.0	821	8386.5	8426.5
2236	22254.5		2512		25165.0	618	6271.5	6322.5	822	8387.0	8427.0
2237	22255.0		2513		25165.5	619	6272.0	6323.0	823	8387.5	8427.5
2238	22255.5		2514		25166.0	620	6272.5	6323.5	824	8388.0	8428.0
2239	22256.0		2515		25166.5	621	6273.0	6324.0	825	8388.5	8428.5
2240	22256.5		2516		25167.0	622	6273.5	6324.5	826	8389.0	8429.0
2241	22257.0		2517		25167.5	623	6274.0	6325.0	827	8389.5	8429.5
2242	22257.5		2518		25168.0	624	6274.5	6325.5	828	8390.0	8430.0
2243	22258.0		2519		25168.5	625	6275.0	6326.0	829	8390.5	8430.5
2244	22258.5		2520		25169.0	626	6275.5	6326.5	830	8391.0	8431.0
2245	22259.0		2521		25169.5	627	6281.0	6327.0	831	8391.5	8431.5
2246	22259.5		2522		25170.0	628	6281.5	6327.5	832	8392.0	8432.0
2247	22260.0		2523		25170.5	629	6282.0	6328.0	833	8392.5	8432.5
2248	22260.5		2524		25171.0	630	6282.5	6328.5	834	8393.0	8433.0
2249	22261.0					631	6283.0	6329.0	835	8393.5	8433.5
2250	22261.5		(Telex allocation)			632	6283.5	6329.5	836	8394.0	8434.0
2251	22262.0		401	4172.5	4210.5	633	6284.0	6330.0	837	8394.5	8434.5
2252	22262.5		402	4173.0	4211.0	634	6284.5	6330.5	838	8395.0	8435.0
2253	22263.0		403	4173.5	4211.5	635	6300.5		839	8395.5	8435.5
2254	22263.5		404	4174.0	4212.0	636	6301.0		840	8396.0	8436.0
2255	22264.0		405	4174.5	4212.5	637	6301.5		841	8396.5	
2256	22264.5		406	4175.0	4213.0	638	6302.0		842	8397.0	
2257	22265.0		407	4175.5	4213.5	639	6302.5		843	8397.5	

Channel			Channel			Channel			Channel		
Designator	Ship Tx	Ship Rx	Designator	Ship Tx	Ship Rx	Designator	Ship Tx	Ship Rx	Designator	Ship Tx	Ship Rx
(Telex allocation)			1228	12490.5	12593.0	1290	12521.5	12623.5	12152	12557.5	12654.5
844	8398.0		1229	12491.0	12593.5	1291	12522.0	12624.0	12153	12558.0	12655.0
845	8398.5		1230	12491.5	12594.0	1292	12522.5	12624.5	12154	12558.5	12655.5
846	8399.0		1231	12492.0	12594.5	1293	12523.0	12625.0	12155	12559.0	12656.0
847	8399.5		1232	12492.5	12595.0	1294	12523.5	12625.5	12156	12559.5	12656.5
848	8400.0		1233	12493.0	12595.5	1295	12524.0	12626.0	12157		12560.0
849	8400.5		1234	12493.5	12596.0	1296	12524.5	12626.5	12158		12560.5
850	8401.0		1235	12494.0	12596.5	1297	12525.0	12627.0	12159		12561.0
851	8401.5		1236	12494.5	12597.0	1298	12525.5	12627.5	12160		12561.5
852	8402.0		1237	12495.0	12597.5	1299	12526.0	12628.0	12161		12562.0
853	8402.5		1238	12495.5	12598.0	12100	12526.5	12628.5	12162		12562.5
854	8403.0		1239	12496.0	12598.5	12101	12527.0	12629.0	12163		12563.0
855	8403.5		1240	12496.5	12599.0	12102	12527.5	12629.5	12164		12563.5
856	8404.0		1241	12497.0	12599.5	12103	12528.0	12630.0	12165		12564.0
857	8404.5		1242	12497.5	12600.0	12104	12528.5	12630.5	12166		12564.5
858	8405.0		1243	12498.0	12600.5	12105	12529.0	12631.0	12167		12565.0
859	8405.5		1244	12498.5	12601.0	12106	12529.5	12631.5	12168		12565.5
860	8406.0		1245	12499.0	12601.5	12107	12530.0	12632.0	12169		12566.0
861	8406.5		1246	12499.5	12602.0	12108	12530.5	12632.5	12170		12566.5
862	8407.0		1247	12500.0	12602.5	12109	12531.0	12633.0	12171		12567.0
863	8407.5		1248	12500.5	12603.0	12110	12531.5	12633.5	12172		12567.5
864	8408.0		1249	12501.0	12603.5	12111	12532.0	12634.0	12173		12568.0
865	8408.5		1250	12501.5	12604.0	12112	12532.5	12634.5	12174		12568.5
866	8409.0		1251	12502.0	12604.5	12113	12533.0	12635.0	12175		12569.0
867	8409.5		1252	12502.5	12605.0	12114	12533.5	12635.5	12176		12569.5
868	8410.0		1253	12503.0	12605.5	12115	12534.0	12636.0	12177		12570.0
869	8410.5		1254	12503.5	12606.0	12116	12534.5	12636.5	12178		12570.5
870	8411.0		1255	12504.0	12606.5	12117	12535.0	12637.0	12179		12571.0
871	8411.5		1256	12504.5	12607.0	12118	12535.5	12637.5	12180		12571.5
872	8412.0		1257	12505.0	12607.5	12119	12536.0	12638.0	12181		12572.0
873	8412.5		1258	12505.5	12608.0	12120	12536.5	12638.5	12182		12572.5
874	8413.0		1259	12506.0	12608.5	12121	12537.0	12639.0	12183		12573.0
875	8413.5		1260	12506.5	12609.0	12122	12537.5	12639.5	12184		12573.5
876	8414.0		1261	12507.0	12609.5	12123	12538.0	12640.0	12185		12574.0
			1262	12507.5	12610.0	12124	12538.5	12640.5	12186		12574.5
1201	12477.0	12579.5	1263	12508.0	12610.5	12125	12539.0	12641.0	12187		12575.0
1202	12477.5	12580.0	1264	12508.5	12611.0	12126	12539.5	12641.5	12188		12575.5
1203	12478.0	12580.5	1265	12509.0	12611.5	12127	12540.0	12642.0	12189		12576.0
1204	12478.5	12581.0	1266	12509.5	12612.0	12128	12540.5	12642.5	12190		12576.5
1205	12479.0	12581.5	1267	12510.0	12612.5	12129	12541.0	12643.0			
1206	12479.5	12582.0	1268	12510.5	12613.0	12130	12541.5	12643.5	1601	16683.5	16807.0
1207	12480.0	12582.5	1269	12511.0	12613.5	12131	12542.0	12644.0	1602	16684.0	16807.5
1208	12480.5	12583.0	1270	12511.5	12614.0	12132	12542.5	12644.5	1603	16684.5	16808.0
1209	12481.0	12583.5	1271	12512.0	12614.5	12133	12543.0	12645.0	1604	16685.0	16808.5
1210	12481.5	12584.0	1272	12512.5	12615.0	12134	12543.5	12645.5	1605	16685.5	16809.0
1211	12482.0	12584.5	1273	12513.0	12615.5	12135	12544.0	12646.0	1606	16686.0	16809.5
1212	12482.5	12585.0	1274	12513.5	12616.0	12136	12544.5	12646.5	1607	16686.5	16810.0
1213	12483.0	12585.5	1275	12514.0	12616.5	12137	12545.0	12647.0	1608	16687.0	16810.5
1214	12483.5	12586.0	1276	12514.5	12617.0	12138	12545.5	12647.5	1609	16687.5	16811.0
1215	12484.0	12586.5	1277	12515.0	12617.5	12139	12546.0	12648.0	1610	16688.0	16811.5
1216	12484.5	12587.0	1278	12515.5	12618.0	12140	12546.5	12648.5	1611	16688.5	16812.0
1217	12485.0	12587.5	1279	12516.0	12618.5	12141	12547.0	12649.0	1612	16689.0	16812.5
1218	12485.5	12588.0	1280	12516.5	12619.0	12142	12547.5	12649.5	1613	16689.5	16813.0
1219	12486.0	12588.5	1281	12517.0	12619.5	12143	12548.0	12650.0	1614	16690.0	16813.5
1220	12486.5	12589.0	1282	12517.5	12620.0	12144	12548.5	12650.5	1615	16690.5	16814.0
1221	12487.0	12589.5	1283	12518.0	12620.5	12145	12549.0	12651.0	1616	16691.0	16814.5
1222	12487.5	12590.0	1284	12518.5	12621.0	12146	12549.5	12651.5	1617	16691.5	16815.0
1223	12488.0	12590.5	1285	12519.0	12621.5	12147	12550.0	12652.0	1618	16692.0	16815.5
1224	12488.5	12591.0	1286	12519.5	12622.0	12148	12550.5	12652.5	1619	16692.5	16816.0
1225	12489.0	12591.5	1287	*12520.0	12520.0	12149	12551.0	12653.0	1620	16693.0	16816.5
1226	12489.5	12592.0	1288	12520.5	12622.5	12150	12551.5	12653.5	1621	16693.5	16817.0
1227	12490.0	12592.5	1289	12521.0	12623.0	12151	12552.0	12654.0	1622	16694.0	16817.5

Channel			Channel			Channel			Channel		
Designator	Ship Tx	Ship Rx	Designator	Ship Tx	Ship Rx	Designator	Ship Tx	Ship Rx	Designator	Ship Tx	Ship Rx
(Telex allocation)			1684	16725.0	16848.0	16146	16761.0	16879.0	16208		16792.0
1623	16694.5	16818.0	1685	16725.5	16848.5	16147	16761.5	16879.5	16209		16792.5
1624	*16695.0	16695.0	1686	16726.0	16849.0	16148	16762.0	16880.0	16210		16793.0
1625	16695.5	16818.5	1687	16726.5	16849.5	16149	16762.5	16880.5	16211		16793.5
1626	16696.0	16819.0	1688	16727.0	16850.0	16150	16763.0	16881.0	16212		16794.0
1627	16696.5	16819.5	1689	16727.5	16850.5	16151	16763.5	16881.5	16213		16794.5
1628	16697.0	16820.0	1690	16728.0	16851.0	16152	16764.0	16882.0	16214		16795.0
1629	16697.5	16820.5	1691	16728.5	16851.5	16153	16764.5	16882.5	16215		16795.5
1630	16698.0	16821.0	1692	16729.0	16852.0	16154	16765.0	16883.0	16216		16796.0
1631	16698.5	16821.5	1693	16729.5	16852.5	16155	16765.5	16883.5	16217		16796.5
1632	16699.0	16822.0	1694	16730.0	16853.0	16156	16766.0	16884.0	16218		16797.0
1633	16699.5	16822.5	1695	16730.5	16853.5	16157	16766.5	16884.5	16219		16797.5
1634	16700.0	16823.0	1696	16731.0	16854.0	16158	16767.0	16885.0	16220		16798.0
1635	16700.5	16823.5	1697	16731.5	16854.5	16159	16767.5	16885.5	16221		16798.5
1636	16701.0	16824.0	1698	16732.0	16855.0	16160	16768.0	16886.0	16222		16799.0
1637	16701.5	16824.5	1699	16732.5	16855.5	16161	16768.5	16886.5	16223		16799.5
1638	16702.0	16825.0	16100	16733.0	16856.0	16162	16769.0	16887.0	16224		16800.0
1639	16702.5	16825.5	16101	16733.5	16856.5	16163	16769.5	16887.5	16225		16800.5
1640	16703.0	16826.0	16102	16739.0	16857.0	16164	16770.0	16888.0	16226		16801.0
1641	16703.5	16826.5	16103	16739.5	16857.5	16165	16770.5	16888.5	16227		16801.5
1642	16704.0	16827.0	16104	16740.0	16858.0	16166	16771.0	16889.0	16228		16802.0
1643	16704.5	16827.5	16105	16740.5	16858.5	16167	16771.5	16889.5	16229		16802.5
1644	16705.0	16828.0	16106	16741.0	16859.0	16168	16772.0	16890.0	16230		16803.0
1645	16705.5	16828.5	16107	16741.5	16859.5	16169	16772.5	16890.5	16231		16803.5
1646	16706.0	16829.0	16108	16742.0	16860.0	16170	16773.0	16891.0	16232		16804.0
1647	16706.5	16829.5	16109	16742.5	16860.5	16171	16773.5	16891.5			
1648	16707.0	16830.0	16110	16743.0	16861.0	16172	16774.0	16892.0	1801	18870.5	19681.0
1649	16707.5	16830.5	16111	16743.5	16861.5	16173	16774.5	16892.5	1802	18871.0	19681.5
1650	16708.0	16831.0	16112	16744.0	16862.0	16174	16775.0	16893.0	1803	18871.5	19682.0
1651	16708.5	16831.5	16113	16744.5	16862.5	16175	16775.5	16893.5	1804	18872.0	19682.5
1652	16709.0	16832.0	16114	16745.0	16863.0	16176	16776.0	16894.0	1805	18872.5	19683.0
1653	16709.5	16832.5	16115	16745.5	16863.5	16177	16776.5	16894.5	1806	18873.0	19683.5
1654	16710.0	16833.0	16116	16746.0	16864.0	16178	16777.0	16895.0	1807	18873.5	19684.0
1655	16710.5	16833.5	16117	16746.5	16864.5	16179	16777.5	16895.5	1808	18874.0	19684.5
1656	16711.0	16834.0	16118	16747.0	16865.0	16180	16778.0	16896.0	1809	18874.5	19685.0
1657	16711.5	16834.5	16119	16747.5	16865.5	16181	16778.5	16896.5	1810	18875.0	19685.5
1658	16712.0	16835.0	16120	16748.0	16866.0	16182	16779.0	16897.0	1811	18875.5	19686.0
1659	16712.5	16835.5	16121	16748.5	16866.5	16183	16779.5	16897.5	1812	18876.0	19686.5
1660	16713.0	16836.0	16122	16749.0	16867.0	16184	16780.0	16898.0	1813	18876.5	19687.0
1661	16713.5	16836.5	16123	16749.5	16867.5	16185	16780.5	16898.5	1814	18877.0	19687.5
1662	16714.0	16837.0	16124	16750.0	16868.0	16186	16781.0	16899.0	1815	18877.5	19688.0
1663	16714.5	16837.5	16125	16750.5	16868.5	16187	16781.5	16899.5	1816	18878.0	19688.5
1664	16715.0	16838.0	16126	16751.0	16869.0	16188	16782.0	16900.0	1817	18878.5	19689.0
1665	16715.5	16838.5	16127	16751.5	16869.5	16189	16782.5	16900.5	1818	18879.0	19689.5
1666	16716.0	16839.0	16128	16752.0	16870.0	16190	16783.0	16901.0	1819	18879.5	19690.0
1667	16716.5	16839.5	16129	16752.5	16870.5	16191	16783.5	16901.5	1820	18880.0	19690.5
1668	16717.0	16840.0	16130	16753.0	16871.0	16192	16784.0	16902.0	1821	18880.5	19691.0
1669	16717.5	16840.5	16131	16753.5	16871.5	16193	16784.5	16902.5	1822	18881.0	19691.5
1670	16718.0	16841.0	16132	16754.0	16872.0	16194	16785.0		1823	18881.5	19692.0
1671	16718.5	16841.5	16133	16754.5	16872.5	16195	16785.5		1824	18882.0	19692.5
1672	16719.0	16842.0	16134	16755.0	16873.0	16196	16786.0		1825	18882.5	19693.0
1673	16719.5	16842.5	16135	16755.5	16873.5	16197	16786.5		1826	18883.0	19693.5
1674	16720.0	16843.0	16136	16756.0	16874.0	16198	16787.0		1827	18883.5	19694.0
1675	16720.5	16843.5	16137	16756.5	16874.5	16199	16787.5		1828	18884.0	19694.5
1676	16721.0	16844.0	16138	16757.0	16875.0	16200	16788.0		1829	18884.5	19695.0
1677	16721.5	16844.5	16139	16757.5	16875.5	16201	16788.5		1830	18885.0	19695.5
1678	16722.0	16845.0	16140	16758.0	16876.0	16202	16789.0		1831	18885.5	19696.0
1679	16722.5	16845.5	16141	16758.5	16876.5	16203	16789.5		1832	18886.0	19696.5
1680	16723.0	16846.0	16142	16759.0	16877.0	16204	16790.0		1833	18886.5	19697.0
1681	16723.5	16846.5	16143	16759.5	16877.5	16205	16790.5		1834	18887.0	19697.5
1682	16724.0	16847.0	16144	16760.0	16878.0	16206	16791.0		1835	18887.5	19698.0
1683	16724.5	16847.5	16145	16760.5	16878.5	16207	16791.5		1836	18888.0	19698.5

Channel			Channel			Channel			Channel		
Designator	Ship Tx	Ship Rx	Designator	Ship Tx	Ship Rx	Designator	Ship Tx	Ship Rx	Designator	Ship Tx	Ship Rx
(Telex allocation)			2241	22304.5	22396.5	22103	22335.5	22427.5	22165	22366.5	
1837	18888.5	19699.0	2242	22305.0	22397.0	22104	22336.0	22428.0	22166	22367.0	
1838	18889.0	19699.5	2243	22305.5	22397.5	22105	22336.5	22428.5	22167	22367.5	
1839	18889.5	19700.0	2244	22306.0	22398.0	22106	22337.0	22429.0	22168	22368.0	
1840	18890.0	19700.5	2245	22306.5	22398.5	22107	22337.5	22429.5	22169	22368.5	
1841	18890.5	19701.0	2246	22307.0	22399.0	22108	22338.0	22430.0	22170	22369.0	
1842	18891.0	19701.5	2247	22307.5	22399.5	22109	22338.5	22430.5	22171	22369.5	
1843	18891.5	19702.0	2248	22308.0	22400.0	22110	22339.0	22431.0	22172	22370.0	
1844	18892.0	19702.5	2249	22308.5	22400.5	22111	22339.5	22431.5	22173	22370.5	
1845	18892.5	19703.0	2250	22309.0	22401.0	22112	22340.0	22432.0	22174	22371.0	
1846	18893.0		2251	22309.5	22401.5	22113	22340.5	22432.5	22175	22371.5	
1847	18893.5		2252	22310.0	22402.0	22114	22341.0	22433.0	22176	22372.0	
1848	18894.0		2253	22310.5	22402.5	22115	22341.5	22433.5	22177	22372.5	
1849	18894.5		2254	22311.0	22403.0	22116	22342.0	22434.0	22178	22373.0	
1850	18895.0		2255	22311.5	22403.5	22117	22342.5	22434.5	22179	22373.5	
1851	18895.5		2256	22312.0	22404.0	22118	22343.0	22435.0	22180	22374.0	
1852	18896.0		2257	22312.5	22404.5	22119	22343.5	22435.5			
1853	18896.5		2258	22313.0	22405.0	22120	22344.0	22436.0	2501	25173.0	26101.0
1854	18897.0		2259	22313.5	22405.5	22121	22344.5	22436.5	2502	25173.5	26101.5
1855	18897.5		2260	22314.0	22406.0	22122	22345.0	22437.0	2503	25174.0	26102.0
1856	18898.0		2261	22314.5	22406.5	22123	22345.5	22437.5	2504	25174.5	26102.5
			2262	22315.0	22407.0	22124	22346.0	22438.0	2505	25175.0	26103.0
2201	22284.5	22376.5	2263	22315.5	22407.5	22125	22346.5	22438.5	2506	25175.5	26103.5
2202	22285.0	22377.0	2264	22316.0	22408.0	22126	22347.0	22439.0	2507	25176.0	26104.0
2203	22285.5	22377.5	2265	22316.5	22408.5	22127	22347.5	22439.5	2508	25176.5	26104.5
2204	22286.0	22378.0	2266	22317.0	22409.0	22128	22348.0	22440.0	2509	25177.0	26105.0
2205	22286.5	22378.5	2267	22317.5	22409.5	22129	22348.5	22440.5	2510	25177.5	26105.5
2206	22287.0	22379.0	2268	22318.0	22410.0	22130	22349.0	22441.0	2511	25178.0	26106.0
2207	22287.5	22379.5	2269	22318.5	22410.5	22131	22349.5	22441.5	2512	25178.5	26106.5
2208	22288.0	22380.0	2270	22319.0	22411.0	22132	22350.0	22442.0	2513	25179.0	26107.0
2209	22288.5	22380.5	2271	22319.5	22411.5	22133	22350.5	22442.5	2514	25179.5	26107.5
2210	22289.0	22381.0	2272	22320.0	22412.0	22134	22351.0	22443.0	2515	25180.0	26108.0
2211	22289.5	22381.5	2273	22320.5	22412.5	22135	22351.5	22443.5	2516	25180.5	26108.5
2212	22290.0	22382.0	2274	22321.0	22413.0	22136	22352.0		2517	25181.0	26109.0
2213	22290.5	22382.5	2275	22321.5	22413.5	22137	22352.5		2518	25181.5	26109.5
2214	22291.0	22383.0	2276	22322.0	22414.0	22138	22353.0		2519	25182.0	26110.0
2215	22291.5	22383.5	2277	22322.5	22414.5	22139	22353.5		2520	25182.5	26110.5
2216	22292.0	22384.0	2278	22323.0	22415.0	22140	22354.0		2521	25183.0	26111.0
2217	22292.5	22384.5	2279	22323.5	22415.5	22141	22354.5		2522	25183.5	26111.5
2218	22293.0	22385.0	2280	22324.0	22416.0	22142	22355.0		2523	25184.0	26112.0
2219	22293.5	22385.5	2281	22324.5	22416.5	22143	22355.5		2524	25184.5	26112.5
2220	22294.0	22386.0	2282	22325.0	22417.0	22144	22356.0		2525	25185.0	26113.0
2221	22294.5	22386.5	2283	22325.5	22417.5	22145	22356.5		2526	25185.5	26113.5
2222	22295.0	22387.0	2284	22326.0	22418.0	22146	22357.0		2527	25186.0	26114.0
2223	22295.5	22387.5	2285	22326.5	22418.5	22147	22357.5		2528	25186.5	26114.5
2224	22296.0	22388.0	2286	22327.0	22419.0	22148	22358.0		2529	25187.0	26115.0
2225	22296.5	22388.5	2287	22327.5	22419.5	22149	22358.5		2530	25187.5	26115.5
2226	22297.0	22389.0	2288	22328.0	22420.0	22150	22359.0		2531	25188.0	26116.0
2227	22297.5	22389.5	2289	22328.5	22420.5	22151	22359.5		2532	25188.5	26116.5
2228	22298.0	22390.0	2290	22329.0	22421.0	22152	22360.0		2533	25189.0	26117.0
2229	22298.5	22390.5	2291	22329.5	22421.5	22153	22360.5		2534	25189.5	26117.5
2230	22299.0	22391.0	2292	22330.0	22422.0	22154	22361.0		2535	25190.0	26118.0
2231	22299.5	22391.5	2293	22330.5	22422.5	22155	22361.5		2536	25190.5	26118.5
2232	22300.0	22392.0	2294	22331.0	22423.0	22156	22362.0		2537	25191.0	26119.0
2233	22300.5	22392.5	2295	22331.5	22423.5	22157	22362.5		2538	25191.5	26119.5
2234	22301.0	22393.0	2296	22332.0	22424.0	22158	22363.0		2539	25192.0	26120.0
2235	22301.5	22393.5	2297	22332.5	22424.5	22159	22363.5		2540	25192.5	26120.5
2236	22302.0	22394.0	2298	22333.0	22425.0	22160	22364.0		2541	25193.0	
2237	22302.5	22394.5	2299	22333.5	22425.5	22161	22364.5		2542	25193.5	
2238	22303.0	22395.0	22100	22334.0	22426.0	22162	22365.0		2543	25194.0	
2239	22303.5	22395.5	22101	22334.5	22426.5	22163	22365.5		2544	25194.5	
2240	22304.0	22396.0	22102	22335.0	22427.0	22164	22366.0		2545	25195.0	

Channel
Designator Ship Tx Ship Rx

2546	25195.5
2547	25196.0
2548	25196.5
2549	25197.0
2550	25197.5
2551	25198.0
2552	25198.5
2553	25199.0
2554	25199.5
2555	25200.0
2556	25200.5
2557	25201.0
2558	25201.5
2559	25202.0
2560	25202.5
2561	25203.0
2562	25203.5
2563	25204.0
2564	25204.5
2565	25205.0
2566	25205.5
2567	25206.0
2568	25206.5
2569	25207.0
2570	25207.5
2571	25208.0

8.2 List of DSC Frequencies

The frequencies listed below are used only for digital selective calls, and are internationally regulated. In addition, the respective countries have decided frequencies for their own use.

Coastal stations in some countries have set up domestic frequencies aside from the internationally regulated frequencies. It is therefore strongly recommended to make inquiries to the relevant coastal stations prior to starting DSC operation.

8.2.1 International Frequencies for Distress and Safety Calls

The following internationally-regulated frequencies are used for distress and safety calls.

(Simplex)

2 1 8 7.	5 k Hz
4 2 0 7.	5 k Hz
6 3 1 2.	0 k Hz
8 4 1 4.	5 k Hz
1 2 5 7 7.	0 k Hz
1 6 8 0 4.	5 k Hz

8.2.2 International Frequencies for Non-Distress/Non-Safety Calls

The following internationally-regulated frequencies are used by ship stations and coastal stations for DSC calls other than distress and safety calls.

(Duplex)

Ship station transmission frequency	
4 2 0 8.	0 k Hz
6 3 1 2.	5 k Hz
8 4 1 5.	0 k Hz
1 2 5 7 7.	5 k Hz
1 6 8 0 5.	0 k Hz
1 8 8 9 8.	5 k Hz
2 2 3 7 4.	5 k Hz
2 5 2 0 8.	5 k Hz

Coastal station transmission frequency	
4 2 1 9.	5 k Hz
6 3 3 1.	0 k Hz
8 4 3 6.	5 k Hz
1 2 6 5 7.	0 k Hz
1 6 9 0 3.	5 k Hz
1 9 7 0 3.	5 k Hz
2 2 4 4 4.	0 k Hz
2 6 1 2 1.	0 k Hz

Main Office & Plants

● Main Office

Akasaka Twin Tower(Main)
17-22,Akasaka 2-chome,
Minato-ku,Tokyo 107-8432 JAPAN
Maritime Sales Department I
Phone : +81-3-3584-8786
Fax : +81-3-3584-8795
Maritime Sales Department II
Phone : +81-3-3584-8790
Fax : +81-3-3584-8797
International Business Department
Phone : +81-3-3584-8836
Fax : +81-3-3584-8878 · 3584-8859
International Marketing Department
Phone : +81-3-3584-8845
Fax : +81-3-3584-8879

● Mitaka Plant

1-1,Shimorenjaku 5-chome,Mitaka
Tokyo 181-8510 JAPAN
Phone : +81-422-45-9111
Fax : +81-422-45-9110

Overseas Branch Office

● U.S.A

Japan Radio Co.,Ltd./Seattle Branch
1011 SW Klickitat Way
Bldg.B,Suite 100
Seattle,WA 98134 U.S.A
Phone : +1-206-654-5644
Fax : +1-206-654-7030

● JRC (UK) Limited

136,1st Floor,Friars House,
157/168 Blackfriars Road,
London SE18 EZ,U.K.
Phone : +44-20-7261-1188
Fax : +44-20-7803-0996

● U.S.A

Japan Radio Co.,Ltd./New York Branch
Suite 209 2125 Center Avenue,
Fort Lee, N.J. 07024, U.S.A.
Phone : +1-201-242-1882
Fax : +1-201-242-1885

Overseas

Liaison & Service Offices

● Indonesia

Japan Radio Co.,Ltd.
J1.H.R.Rasuna Said Kav.
X-0,Jakarta 12950,INDONESIA
Phone : +62-21-520-4053
Fax : +62-21-525-4264

● Taiwan

Japan Radio Co.,Ltd
10F-4,No.110,Santou 4th Road,
Kaohsiung Taiwan,R.O.C
Phone : +886-7-3307151
Fax : +886-7-3319400

● Philippines

Japan Radio Co.,Ltd.
2320 Taft Avenue
Malate,Manila PHILIPPINES
Phone : +63-2-524-8565 · 525-3589
Fax : +63-2-521-5049

● Spain

Japan Radio Co.,Ltd.
Calle Luis Doreste Silva,50-1-B
De Las Palmas De Gran Canaria, SPAIN
Phone : +34-928-290076
Fax : +34-928-293755

● Thailand

Japan Radio Co.,Ltd.
Charturong Arphon Building,
457 Phra Sumaru Street,
Bangkok 10200,THAILAND
Phone /Fax : +66-2-280-0401

● Singapore

Japan Radio Co.,Ltd.
c/o CODAR(PTE.)LTD
315 Outram Road #11-06/07 Tan Boon Liat
Building Singapore 169074,SINGAPORE
Phone : +65-2229190
Fax : +65-2229398

● India

Japan Radio Co.,Ltd.
Best Western Surya Hotel,
Business Center New Friends
Colony,New Delhi 110065,
INDIA
Phone : +91-11-691-9294 · 691-9297
Fax : +91-11-691-9305

● Greece

Japan Radio Co.,Ltd.
Akti Miaoli 57,Piraeus,Greece
Phone : +30-1-429-3304 · 429-3305
Fax : +30-1-429-3306

Overseas Service Center ● Netherlands

Japan Radio Co.,Ltd.
Eekhoutstraat-7,
3087AB Rotterdam, THE NETHERLANDS
Phone : +31-10-429-4581 · 495-0020
Fax : +31-10-428-2259