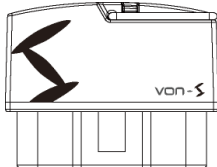


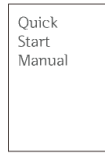
Quick Start Manual

A user should read notes correctly, the product information and quick start manual before using. We're not responsible for all accidents that user doesn't follow the precautions.

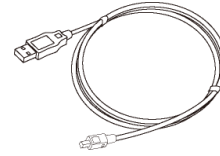
1. Components



[Body]



[Quick Start Manual]



[USB cable]

Components	Descriptions	Unit
Body	To plug in vehicle OBD II 16 pin port	1EA
Quick Start Manual	To provide easy guide manual	1EA
USB cable	To use data transmission	1EA

2. Notices before installation

- 1) This product is only available for application, von-STD(JTBT2200) supported or compatible with.
- 2) von-STD(JTBT2200) supported applications for purchasing and downloading are available at App Store, Android Market
- 3) If Bluetooth's SSID information lost, contact to JASTEC homepage (<http://vons.jastec.co.kr>) and download the von-STD(JTBT2200) initial Manager for initialization.
- 4) When SSID initialization, the setting is as follows.

	SSID	Password
Bluetooth	von-STD	0000

3. Cautions for Safety.

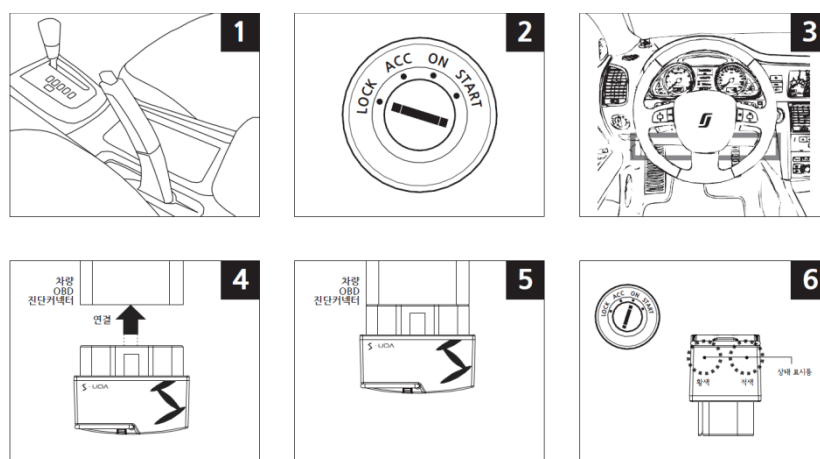
- For appropriate use and user's safety of the product, please read the cautions carefully then use it. We're not responsible for all accidents that user doesn't follow the precautions.

- 1) The product in water or prolonged exposure to moisture can cause damages so a free warranty service will not be able to receive.
- 2) This product is separate from your car unnecessarily or arbitrarily used for the other purposes, you can cause damage and we're not responsible legally for the any damages caused by the negligence of the user.
- 3) In case of disassemble or repair the product intentionally, free warranty service will not be able to receive.
- 4) If you break the seal on the product label, free warranty service will not be able to receive.
- 5) Do not install or remove the product when either engine ON or OFF. It's caused to vehicle's failure.
- 6) A driving logs will periodically have to stored and make sure vehicle data also must be stored in advance before a warranty service (Please refer to the manual of an application)
- 7) Strong detergent or chemicals have to be placed far from the surface of product.
- 8) This product works is the proper temperature -30 ~ +80°C.

- 9) Do not impact the product. It will cause product malfunction.
- 10) A product and cable may break if excessive force.
- 11) The use of products other than rated voltage will cause damage. Rated voltage must be used for the product.
- 12) Parking a vehicle in a safety place, drive a vehicle after the product's installation and operation.
- 13) When you disconnect the product installed in vehicle or vehicles may result in personal injury due to peripheral, please be careful.
- 14) An incorrect installation of the product may cause data loss due to shock and vibration of vehicle, make sure that they are mounted properly after installation.
- 15) The product, by shock or vibration of the vehicle, is detached from the vehicle can cause the loss of data. Please check the installation status on a regular basis. We're not responsible for a car accident caused by vehicle malfunction, damage, driving record omission

4. von-STD(JTBT2200)'s connection to Vehicle

- 1) This product is configured so that anyone can easily install. Before installation of the device, you may have to familiarize yourself with the precautions to install.
- 2) OBD II 16 pin port of vehicle usually is located under the dashboard from a driver's seat. A user should check the location of vehicle's OBD II 16 pin port then install it or contact to manufacturer nearby.
- 3) Vehicle must be parked in a safe place and then plug the product to OBD II 16 pin port.
 - *CAUTION: Lock the parking brake and place transmission gear into P position after parking.
- 4) Check whether an engine is ON or OFF, if an engine is ON, please turn is off.
- 5) Check the location of vehicle's OBD II 16 pin port.
- 6) Check the body of device and the direction of vehicle's OBD diagnostic connector then try to install it.
- 7) The body of the vehicle OBD diagnostic connector is installed properly, turn on the engine.
- 8) After start-up the engine, both the yellow light and red light are on then the yellow light is blinking and a buzzer is sounded.



5. von-STD(JTBT2200)'s disconnection from vehicle

- 1) Vehicle is parked in a safe place then turn off the engine.
- 2) Pull the vehicle's OBD II device body from a vehicle's OBD II port.

6. Pairing to Bluetooth

- 1) Drive an application.
- 2) If Bluetooth is not turned on, Bluetooth is on, written instructions to the message.
- 3) Search for Bluetooth devices around the window, and fill the password by tapping von-STD(JTBT2200).

Enter a password "0000".

* SID and password of von-STD(JTBT2200) OBD II device can be changed on the application.

(CAUTION: please refer to the user's manual of application because each application is different.)

- 4) A connection is completed. Simply von-STD(JTBT2200) driven application can be used.

7. Lights display & description by device operating status

Device's operating status	Light conditions		Descriptions
	Yellow	Red	
Boot	On	On	Device booting
Communication standby	Blink (1Sec.)	Off	Communication standby
Eco-Good	On	Off	Eco index – Good
Eco-Normal	On	On	Eco index – Normal
Eco-Bad	Off	On	Eco index – Bad
Sleep	Off	Off	Sleeping mode

FCC Information

This device complies with Part 15 of the FCC Rules. Operation is subject to the following two conditions:

- (1) This Device may not cause harmful interface, and
- (2) This device must accept any interference received, including interference that may cause undesired operation.

Note: This equipment has been tested and found to comply with the limits for CLASS B digital device, pursuant to Part 15 of FCC Rules. These limits are designed to provide reasonable protection against harmful interference when the equipment is operated in a commercial environment. This equipment generates, uses and can radiate radio frequency energy and, if not installed and used in accordance with the instructions, may cause harmful interference to radio communications. However, there is no guarantee that interference will not occur in a particular installation. If this equipment does cause harmful interference to radio or television reception, which can be determined by turning the equipment off and on, the user is encouraged to try correct the interference by one or more of the following measures:

- 1.1. Reorient or relocate the receiving antenna.
- 1.2. Increase the separation between the equipment and receiver.
- 1.3. Connect the equipment into an outlet on a circuit different from that to which receiver is connected.
- 1.4. Consult the dealer or experienced radio/TV technician for help.

WARNING

Changes or modifications not expressly approved by the manufacturer could void the user's authority operate the equipment.

"CAUTION: Exposure to Radio Frequency Radiation.

Antenna shall be mounted in such a manner to minimize the potential for human contact during normal operation. The antenna should not be contacted during operation to avoid the possibility of exceeding the FCC radio frequency exposure limit. The minimum separation distance of 20 cm from the antenna to the body of user required.