

von-S2(JTGM-1100) Manual Instruction

BEAUTIFUL WORLD
GREEN IT UP!

von-S2(JTGM-1100) Information

- **Certified Business Name: Jastec Co.,Ltd.**
- **Device (model): Vehicle Fleet Management Service System**
- **Manufacture date: Jan, 2013**
- **Manufacturer/country : Jastec Co.,Ltd./Korea**
- **Certified code : JS0**

- **A radio interference of this wireless module is not providing a service related the safety of life.**

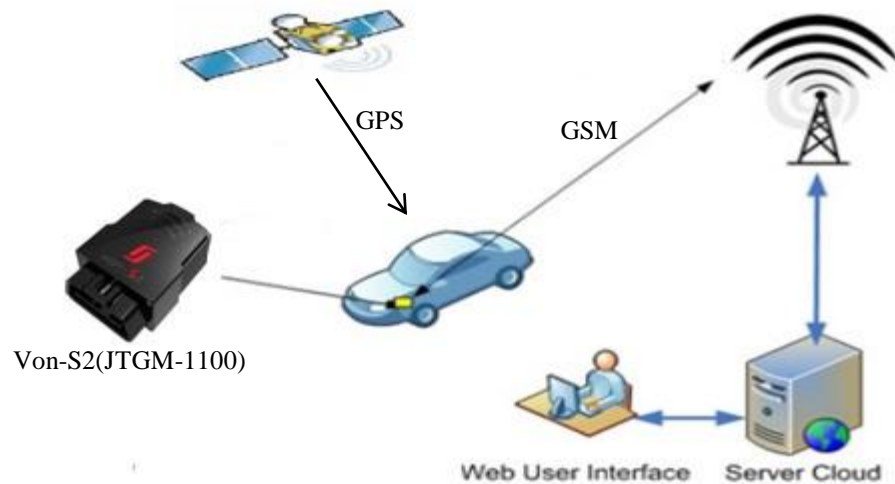
Cautions For Safety

We kindly recommend you to be fully aware of using a product accurately and for safety of user. All liabilities by uncomplying cautions are not supposed to be responsible to manufacturer.

1. This product into water or prolonged exposure to moisture can cause failure resulting in no charge for broken A/S.
2. Do not disassemble or repair this product if the label seal is broken or damaged, free A/S will not be received.
3. Do not separate or equip von-F module while driving vehicle or ignition off. – This causes to car accident and defective of it.
4. Please note that on the surface of the product carefully to avoid strong detergent or chemicals.
5. This product works under the proper temperature -20~+60°C.
6. Do not impact the product. It's the cause of product defective.
7. Using other products rated voltage is the cause of the crush. Rated voltage state must be sure to use the product.
8. After parking vehicle in a safe place, install von-F module then drive.
9. When installing or removing product on the vehicle as the vehicle peripheral device could be due to injury, Please be careful.
10. Incorrect installation of the product by the vehicle's shock and vibration and can cause data loss, after the installation, please check it properly.
11. Products by shock or vibration of the vehicle is released from the car because it can cause data loss if the installation status checks on a regular basis. This product is equipped with a breakdown of the car by the impact of accidents, damage, of driving record, we are not responsible for missing.

1. von-S2(JTGM-1100) Descriptions

1.1 Overview



von-S2(JTGM-1100) as vehicle Fleet Management Service System designed to collect a vehicle driving information from ECU(Electronic Control Unit) By OBD standard protocol communication and can be saved a driving logs by connecting to PC.

1. von-S2(JTGM-1100) Descriptions

1.2 Specifications

| Item | Description |
|-----------------------|--|
| CPU Processor | 32-bit ARM Cortex-M3(256KB Flash, 64KB SRAM) |
| External Memory | 4MB Serial Flash Memory |
| In-Vehicle Protocol | ISO 9141-2, ISO 14230-4(KWP-2000), ISO 15765-4(CAN), SAE J1850(PWM/VPWM) |
| Status | 4-LEDs (Power, Status, Modem, GPS) |
| Supported Functions | SAE J1979 Mode \$01~\$0A |
| Vehicle Interface | SAE J1962 Standard OBD-II 16 PIN Connector |
| USB Port | USB 2.0 Compatible, VCP(Virtual COM Port) Supported |
| GSM/GPRS | GSM/GPRS/EDGE 850/900/1800/1900MHz |
| G-Sensor | Bosch 3-Axis 10-Bit Resolution, BMA150 |
| GPS | SGPS, AGPS, gpsOneXTRA-tm |
| MIC Function | Microphone (Emergency Call) |
| Internal Battery | 360mAh |
| Operational Voltage | DC 8V ~16V or USB 5V Support |
| Power Consumption | Save Mode Max. 60mW, Max Power Mode 5000mW |
| Dimensions | Max. 46mm(W) x 25mm(D) x 66mm(H) |
| Weight | 54g |
| Operating Temperature | -20 ~ +60 °C |
| Storage Temperature | -40 ~ +85 °C |

1. von-S2(JTGM-1100) Descriptions

1.3 Functions

| | |
|------------------------------|--|
| Driving logs record | Saving vehicle information. |
| | Collecting and saving driving logs information. Vehicle identification information / module certification / module serial number information / driving data starting time and ending time / ignition On and Off time / Accumulated driving distance / module connection and disconnection time / driving information transmitting time / acceleration pedal or throttle valve open angle |
| Driving information security | Encoded saving data to not modify a driving recorded information. |
| Driving information upload | GSM transmitter preferred. |
| Power saving function | Automatically power will be off when ignition off. |
| Self diagnostic | Supporting self diagnostic function through von-F module operating check (Indicator). |
| Firmware upgrade support | Supporting firmware upgrade |

1. von-S2(JTGM-1100) Descriptions

1.4 Composition



Quick Start Manual



프로그램 설치 CD

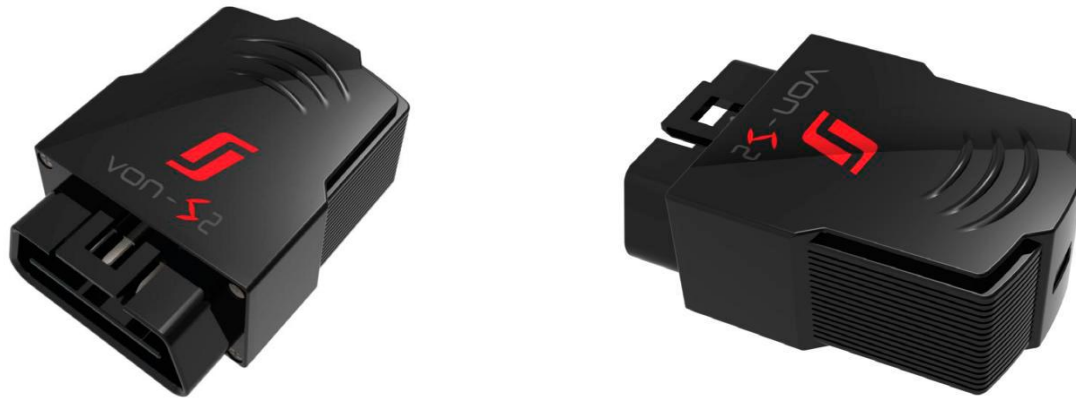


USB 케이블

| Name | Function |
|--------------------------|---|
| von-S2(JTGM-1100) module | Connection to vehicle OBD diagnostic port. |
| USB cable | Firmware Update |
| Quick Start Manual | Quick guide manual |
| Program installation CD | von-S2(JTGM-1100) PC Manager installation program |

1. von-S2(JTGM-1100) Descriptions

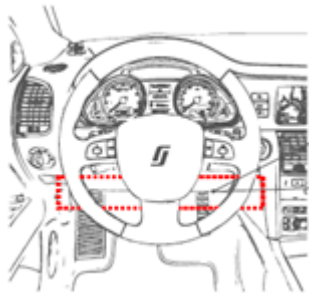
1.5 Body description



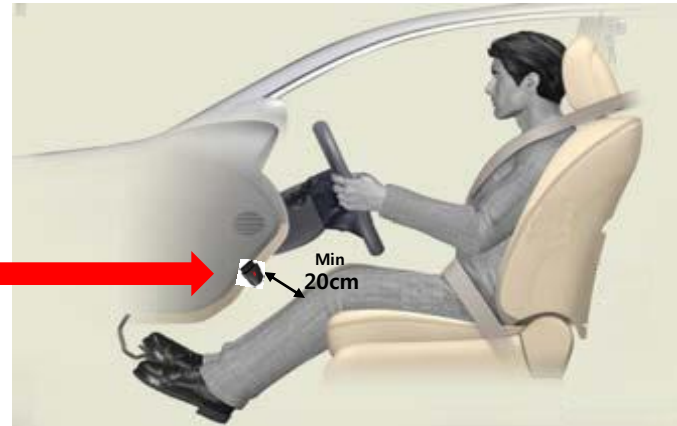
| | |
|---------------|---|
| display LED | 4-Indicator display LED |
| DLC connector | Connect to vehicle OBD diagnostic port. |
| USB Connector | F/W Update Connector |

2. Product Instructions

2.1 von-S2(JTGM-1100) installation



[Vehicle OBD diagnostic Connector]



von-S2(JTBT-2200) installation is following below order.

1. von-STD(JTGM-1100) installation requires after vehicle parking in safety area.
**** Caution : A side brake or foot brake should be locked and shift also checked on the parking position.**
2. Please check vehicle engine should be off when if ignition on
3. von-S2(JTGM-1100) shall be installed in front of driver seat and must be located to ensure a separation distance of 20cm or more between the antenna and the driver/passenger to comply with FCC RF exposure requirements.
4. Check the position of vehicle OBD diagnostic connector.

2. Product Instructions

2.3 von-S2(JTGM-1100) module separation

- ** Caution : von-S2(JTGM-1100) module separation should be performed at safety area after parking.
- ** Caution : The separation from vehicle is prohibited if not the purpose of driving data saving or transmitting.
- ** Caution : Performing von-S2(JTGM-1100) module separation on ignition on may be caused to data loss or module damaged.

1. Turn vehicle ignition off.
2. Pull von-S2(JTGM-1100) module from vehicle OBD diagnostic Cable then separating it.

3. Warranty & After Sale Service

3.2 Warranty Service

1. Warranty Period : 1 year
2. Warranty Details
 - 1) Any defective or damage within warranty period can be repaired free A/S service or exchanged as free of charge.
 - 2) Any damage or defective by customer's misuse is not allowed free exchange or free charged A/S service.
3. Exchange and Return
 - 1) An exchange or return is possible within 1 week after purchase if not opening box.
 - 2) A shipping charge against returning product because of just customer's changed mind may be paid by customer.
4. Others
 - 1) Warranty period is valid only for 12 months from manufacturing date if not checking a purchasing date.
 - 2) Repair charge will be billed even though it's warranty period as below.
 - Defective by user's misuse (impact/flooded/fault)
 - Dismantle or alteration by user's intention.
 - Defective by natural disaster.
 - Repaired not in official After Sales service centre.
 - 3) Please contact to A/S call service centre for repair charges.
A/S call service : (031-719-5170 Extension : 206)



FCC ID : UK4JTGM-1100

This device complies with part 15 of the FCC Rules. Operation is subject to the following two conditions:

- (1) This device may not cause harmful interference, and
- (2) this device must accept any interference received, including interference that may cause undesired operation.

Any changes or modifications (including the antennas) made to this device that are not expressly approved by the manufacturer may void the user's authority to operate the equipment.

FCC RF Radiation Exposure Statement:

This equipment complies with FCC RF Radiation exposure limits set forth for an uncontrolled environment. This device and its antenna must not be co-located or operating in conjunction with any other antenna or transmitter.

** This device must not be installed in cars where the module would be less than 20cm from the legs or body of driver or passenger.

FCC ID : UK4JTGM-1100

Note : This equipment has been tested and found to comply with the limits for a Class B digital device, pursuant to part 15 of the FCC Rules. These limits are designed to provide reasonable protection against harmful interference in a residential installation. This equipment generates, uses and can radiate radio frequency energy and, if not installed and used in accordance with the instructions, may cause harmful interference to radio communications. However, there is no guarantee that interference will not occur in a particular installation. If this equipment does cause harmful interference to radio or television reception, which can be determined by turning the equipment off and on, the user is encouraged to try to correct the interference by one or more of the following measures:

- Reorient or relocate the receiving antenna.
- Increase the separation between the equipment and receiver.
- Connect the equipment into an outlet on a circuit different from that to which the receiver is connected.
- Consult the dealer or an experienced radio/TV technician for help.

Modifications not expressly approved by the manufacturer could void the user's authority to operate the equipment under FCC rules.