



Bluetooth® Helmet Headset



USER GUIDE



DWO-4  
Bluetooth® Helmet Headset

## INTRODUCTION

Congratulations and thank you for having chosen the BILT™ Bluetooth helmet headset for motorcycle riders. This manual will help operate the headset, but you should first familiarise yourself with the Bluetooth functions of your mobile phone or GPS device before using.

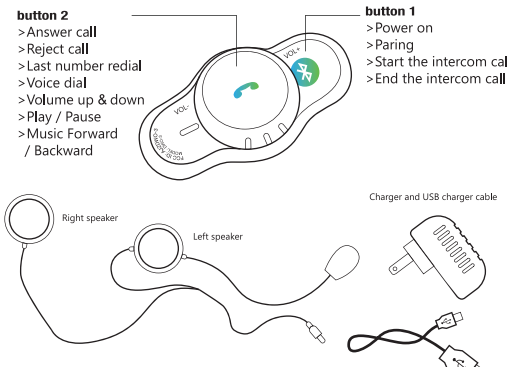
The BILT™ Bluetooth helmet headset offers the following uses:

- Bluetooth helmet headset for mobile phone communication.
- Bike to bike intercom communication with another unit (up to 1.640 ft. / 1000 meters range).
- Turn by turn GPS navigation instructions (with compatible Bluetooth device).
- MP3 connectivity (Bluetooth compatible version).

## COMPATIBILITY WITH YOUR HELMET

The BILT™ Bluetooth helmet headset is easy to install inside the helmet. When buying your headset or your helmet, please ask your dealer for compatibility of both.

## CONTENTS OF RETAIL BOX



Note: The use of two speakers may be illegal in certain countries. Please check the local regulations and act accordingly.

## TROUBLESHOOTING

### 1. Not working

The battery could be flat. Charge the headset for 3 hours and try again.  
Note: When the Bluetooth helmet headset has no connection to the mobile phone or other Bluetooth devices, time more than 60 minutes later, the Bluetooth helmet headset will automatically be turned off.

### 2. No sound

Physically check whether the speakers and microphone have been correctly connected. Check if you have turned the volume down too low.

### 3. Whistling of the speakers.

If the microphone is too close to a speaker, the speaker will make a whistling sound. Increase the distance between the microphone and the speaker.

### 4. Loss of connection with the mobile phone or music sources

Please check whether the battery is too low or the use range to your mobile phone is out of 10 meters or blocked by some obstacles like metal or water etc. that absorb much radio signals.

### 5. Cannot connect with mobile phone

Test connection with your mobile phone before purchasing. We cannot guarantee that the BILT™ Bluetooth helmet headset can connect with all types of mobiles as some mobile phone may not use the standard Bluetooth profile.

### 6. Can not reconnect or connect with your mobile phone automatically

Clear all pairing information of the Bluetooth helmet headset as user manual instructed, then please delete all Bluetooth devices on your mobile phone then turn off, take out your mobile phone battery for a few seconds, and then put back the battery, turn on your mobile phone, restart the Bluetooth function and search and pair the Bluetooth device again, after device paired successful, make sure you set the option of helmet headset to be "Default/Trusted/Authenticated/Auto Connect Enable/Always Visible/Discoverable" device. Now you can reconnect with your Bluetooth helmet headset.

### 7. Reset

Some regions of high RF strength or near high power TV transmitters, GSM station or airport radars, can overwhelm the headset and stall the unit. Please charge the unit, and it will be reset and work normally again.

### 8. Unsolved problem

Please return the headset back to after-sale service department if you can not resolve the problem with the help of steps 1-6.

## FCC Statement

This equipment has been tested and found to comply with the limits for a Class B digital device, pursuant to Part 15 of the FCC Rules. These limits are designed to provide reasonable protection against harmful interference in a residential installation. This equipment generates, uses and can radiate radio frequency energy and, if not installed and used in accordance with the instructions, may cause harmful interference to radio communications. However, there is no guarantee that interference will not occur in a particular installation if this equipment does cause harmful interference to radio or television reception, which can be determined by turning the equipment off and on; the user is encouraged to try to correct the interference by one of the following measures:

- > Reorient or relocate the receiving antenna.
- > Increase the separation between the equipment and receiver.
- > Connect the equipment into an outlet on a circuit different from that to which the receiver is connected.
- > Consult the dealer or an experienced radio / TV technician for help.

FCC Caution: Any changes or modifications not expressly approved by the party responsible for compliance could void the user's authority to operate this equipment.



Bluetooth® Helmet Headset

Bluetooth® Helmet Headset



## OPERATION

### power on

Long press K\_POWER about 2S, blue light on, voice prompt "power on"

### power off

press K\_POWER and K\_PHONE approximately 0.2S at the same time, the red light on, the voice prompt "Power off"

### MUSIC OPERATION

Please refer to the devices user manual first.

### 1 PLAY / PAUSE

Long press Button 2 about 2s, hear a chime

### 2 MUSIC AND SONG ADJUST

Music playback mode, short press Button 2, enter the up and down adjustment mode to change the song up and down with the knob adjustment, within the SS, automatic exit after SS regulation mode, or short press Button 2 exit within SS.

### 3 VOLUME

In the intercom, conversation, music stage, up and down to do the volume knob, achieve volume adjustment.

### GPS NAVIGATOR OPERATION

1 Please pair GPS device and please refer to the GPS navigator user manual first to share the audio information from GPS via A2DP.

2 In phone or intercom call active and music-playing state, left twist and hold Button 2 can go to turn down the volume, right twist and hold Button 2 can go to turn up the volume, when reaching the maximum or minimum volume, a "DiDong" tone will be played.

3 Mobile phone or intercom calls have a higher priority than GPS audio. Mobile phone/intercom calls will interrupt the GPS audio. The audio will be restored automatically after the call has ended.

5

## SPECIFICATIONS

DWO - 4

Bluetooth Version	V3.0
Bluetooth RF Spec	Class 1
Talking Time	8 hours
Standby Time	160 hours
Charging Voltage	5V
Charging Time	3 hours
RF Frequency	2.402-2.480Ghz
Battery Type	550mah recharging lithium-polymer battery
Profile	Hsp,Hfp,A2dp,Avrcp,Intercom
Supports HSP, HFF, A2DP, AVRCP, and Full Duplex intercommunication	

## LED Light Indicator

Led Light Indicator	State
All Led off	Power off
Red and blue lights flashing alternately	Pairing mode
Blue lights flash every 1 second	Standby mode
Blue lights fast flash 2 times every 3 seconds	Connected mode
Red lights flash 1 time every 30 seconds	Battery Low
Red always flash	Charging
Red still on	Charge finished

## FUNCTIONS



- >Bluetooth® Hands-free
- >Last number redial
- >Automatically answer call and voice dial
- >Reject a call
- >Independent mobile phone volume control and memorize
- >Mobile phone highest priority



- >Rider to rider (Maximum communication range up to 1000m)
- >Rider to pillion
- >3 riders connection
- >Switch conversation between 3
- >Independent intercom volume control and memorize
- >Intercom second priority after mobile phone



- >Audio guide information from Bluetooth® GPS navigator by A2DP function or HFP
- >Independent volume control



- >Bluetooth® A2DP music Play
- >Enjoy music from Mobile phone or other music sources
- >Remote control music play with AVRCP
- >Independent music volume control and memorize
- >Music third priority after phone call and intercom
- >Music volume soft restore back

## BATTERY CHARGING

The unit has an embedded rechargeable battery. Please charge the unit for approx 3 hours before use. The red LED will shine still when the battery is fully charged.

- Please use the USB cable gently, do not pull it too hard or the headset may be damaged.
- In order to keep the battery capacity and extend its life, please store the headset in 15°C to 25°C environment while not use.



Note: Please do not use the headset while charging



The BILT™ Bluetooth helmet headset is a water-resistant device, designed for use under moderate rain or snow conditions. However, the headset is not waterproof and should not be used under severe weather conditions.

## INSTALLATION

### 1 Headset control box mounting plate

The headset mount plate must be mounted onto the helmet first. Once mounted, the headset unit can be attached or detached from the sliding plate at any time you want. The unit is designed to be mounted on the left side of the helmet.

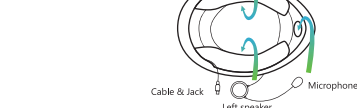
Note: It is better to remove it from the mounting plate when not in use.

### 2 Mounting the microphone and speakers

- Ensure your helmet has enough room to mount the speakers (ie, cutout).  
- Certain models of BILT™ helmets are equipped with the specific cut-outs for this model, DWO-4. At time of printing (Jan 2012) BILT™ compatible model include: Dominator, Tour Tech, Tour Tech T55, GP3&CFK-1. For fitment to any other motorcycle helmet please consult your local dealer for expert advice.  
- Fit the velcro tabs into the cut-out on the above BILT™ helmet, or where applicable on other helmets then attach the speaker to the velcro tab (note: short speaker cord for left, long speaker cord for right).  
- Ensure the microphone is positioned in close proximity to the mouth. On above BILT™ helmets the microphone can be routed behind the removable cheek pads.

Always prioritize your riding, not mobile phone call; During a mobile phone conversation, or while using the intercom, decrease/avoid concentrate on your riding. In bad weather and/or heavy traffic, we recommend pulling over and stopping before answering.

Feed cords under the helmet liner if possible and as close to the bottom of the helmet



3

## OPERATION

### POWER ON & OFF

1. In power off state, long press Button 1 about 2S, blue light on, voice prompt "Power on".
2. Press Button 1 and Button 2 approximately 0.2S at the same time, the red light on, the voice prompt "Power off".

### ENTER PAIRING MODE

In power off state, press and hold Button 1 for about 8 seconds until a "didi" tone played and the Blue and Red (blue LED indicators flash alternately, the headsets are on pairing mode (the Bluetooth headset can be searched and paired only when it is on pairing mode).

### MOBILE PHONE OPERATION

#### 1.PAIR WITH CELL PHONE:

In the power on state, long press Button 2 about 5S, red and blue lights flashing alternately. Open the bluetooth searching of cell phone, Pairing, voice prompt "Pairing".

#### 2.CONNECT MOBILE:

when power on, it will automatically connect mobile phone, if not, short press Button 2, to make it connect mobile phone

#### 3.VOICE DIAL:

Power on and connected phone, short press Button 2.

## OPERATION

### 4.AT THE END OF THE CODE REDIAL:

at boot stage, connected the phone, and then double-click Button 2. Prompt "Redialing"

### 5.TO ANSWER PHONE CALL:

When calling, it will automatically receive the phone call after 8s, in the case of a call, short press Button 2 to answer

### 6.REFUSED TO ANSWER PHONE CALL:

when there is Calls, within 8S, double-click the Button 2 refused.

### 7.END PHONE CALL:

during the call, short press Button 2 hang up

## INTERCOM OPERATION

### 1. Pairing Intercom Headsets

1.1 Please press and hold Button 1 until Red/Blue lights flashes alternately to enter Pairing Mode.  
1.2 Short press Button 1 of either headset, it will search the other one which in pairing state, and then try to pair with it.

Note: Please do not press both Button 1 while starting the search operation!

1.3 Within a few seconds, both headsets will turn off the red light, and then flashing slowly in blue. Pairing is finished.  
1.4 To pair with another headset, repeat the above steps please.

2. After pairing successfully, just short press either of Button 1, then the intercom function will be activated.

3. Pairing is a one time process. Once the headsets are paired during this setup procedure, they will remain paired and automatically recognize each other whenever they are within available range.

4. Either of headset users wants to end the intercom talking function, just short press either of Button 1, and then the intercom function will be terminated.  
5. Mobile phone has highest priority. Mobile phone call can interrupt the intercom call. The intercom will be restored automatically after phone call ended.

1

4

This device complies with part 15 of the FCC rules. Operation is subject to the following two conditions:

- (1) this device may not cause harmful interference, and
- (2) this device must accept any interference received, including interference that may cause undesired operation.

About SAR information, please check the FCC ID:AJZDWO-4 on FCC website.