

JME-1125U

User Manual

2.4GHz Wireless Optical Mouse

JME-1125U User Manual

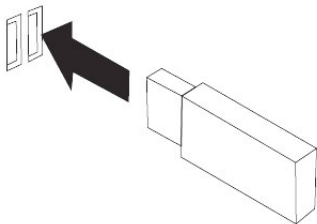
Thanks for purchasing this wireless optical mouse. This creative and easy-to-use wireless mouse will bring you a whole new wireless life experience. Be sure to carefully read this User Manual first for the proper use of the wireless mouse and then keep it for future reference.

System Requirements

- Microsoft Windows XP/Vista/Seven or later version
- An available USB port

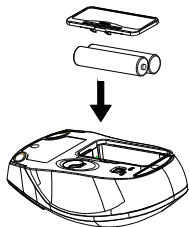
Installation & Use

- Plug the USB receiver into any available USB port or hub connected to your computer.



The operating system identifies the receiver as a “USB Human Interface Device” and begins installation automatically. When completed, the system will prompt that “Your new hardware is installed and ready to use.”

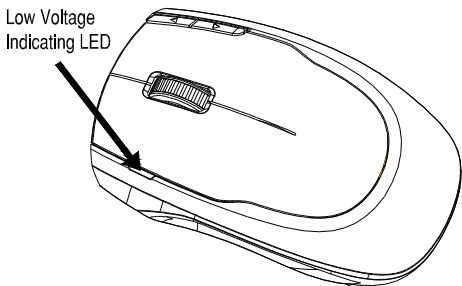
- Remove the mouse battery compartment cover, and install batteries with the positive(+) & negative(-) in the correct direction indicated by the AAA battery compartment label.



- Replace the battery compartment cover.
- Switch on the mouse, the mouse should be functioning now. If not, please reestablish contact for the mouse, hold down the left and right key of the mouse for 5 seconds, when the receiver light, the mouse is connected.

Battery Low Indication

When the batteries voltage become low, the battery indicating LED on the top of the mouse will blink. The mouse can continue to operate for a period of time on usage, but batteries should be replaced immediately.



Troubleshooting

If the mouse does not work properly, please try the steps:

1. Before you install your wireless mouse, please make sure the receiver installation is completed and the receiver has start-up.
2. Please check to make sure the batteries are no dead.
3. Make sure the batteries are positioned correctly and connected well.
4. Check if the switch has been switched on.
5. Make sure that the mouse is within the effective range --10m
6. Press the connect button on the backside of the mouse for 5 seconds. While the receiver blinks, release the connect button.

FCC Statement

This device complies with Part 15 of the FCC Rules. Operation is subject to the following two conditions:

- (1) This device may not cause harmful interference and
- (2) This device must accept any interference received, including interference that may cause undesired operation.

FCC Radiation Exposure Statement

This equipment has been tested and found to comply with the limits for a Class B digital device, pursuant to Part 15 of the FCC Rules. These limits are designed to provide reasonable protection against harmful interference in a residential installation. This equipment generates, uses and can radiate radio frequency energy and, if not installed and used in accordance with the instructions, may cause harmful interference to radio communications. However, there is no guarantee that interference will not occur in a particular installation. If this equipment does cause harmful interference to radio or television reception, which can be determined by turning the equipment off and on, the user is encouraged to try to correct the interference by one or more of the following measures:

- Reorient or relocate the receiving antenna
- Increase the separation between the equipment and receiver.
- Connect the equipment into an outlet on a circuit different from that to which the receiver is connected.
- Consult the dealer or an experienced radio/TV technician for help.

NOTE:

THE MANUFACTURER IS NOT RESPONSIBLE FOR ANY RADIO OR TV INTERFERENCE CAUSED BY UNAUTHORIZED MODIFICATIONS TO THIS EQUIPMENT. SUCH MODIFICATIONS COULD VOID THE USER AUTHORITY TO OPERATE THE EQUIPMENT.



Caution:

- * Risk of explosion if battery is replaced by an incorrect type.
- * Dispose of used batteries according to the instructions.
- * Changes or modifications not expressly approved by the party responsible for compliance could void the user's authority to operate the equipment.

Thanks for using the wireless mouse. If have any questions and suggestions with our product, please telephone or Email to our service personals, we will reply as soon as possible.