

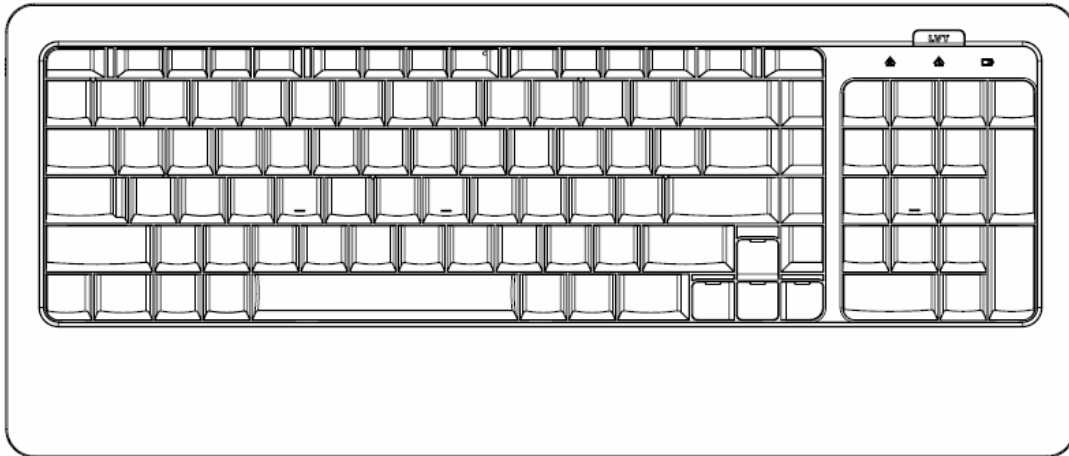
Wireless Bluetooth Keyboard User's Guide

Model No: LXH-JME8002B

精模电子科技（深圳）有限公司

Thanks for purchasing this Bluetooth Keyboard, it's with standard 101 keys as well as 14 function keys. This creative and easy-to-use Bluetooth Keyboard will bring you a whole new wireless life experience.

Appearance Drawing



System Requirement

- Keyboard compatible with standard Microsoft Mode.
- IBM compatible PCs running Windows Operating System which supports USB devices.
- If your computer don't have built in Bluetooth function, please make sure that you have the Bluetooth Dongle. Bluetooth Dongle is not included in this product.

Before you Begin

- Keep this Installation Guide for future reference! It contains important Troubleshooting Information.
- Keep your old PS/2 keyboard as a back-up device.

Main Features

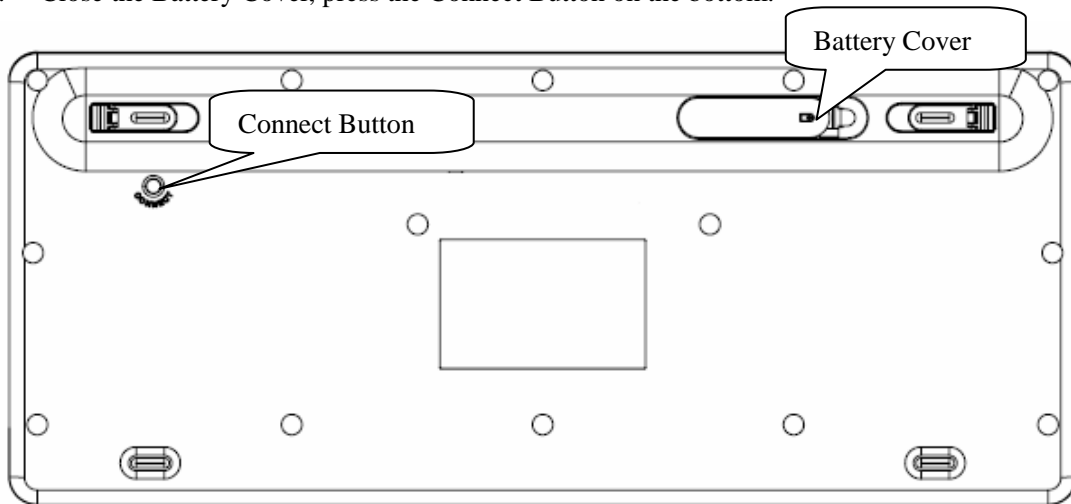
- Use Broadcom 2042 Chipset with wireless Bluetooth 2.0 interface
- Features comfortable, ergonomic design with 14 function keys
- Come with particular power managing software, indicates the power capacity in Microsoft Windows System automatically
- Use the Bluetooth industry leading software solutions, WIDCOMM BTW (Microsoft officially designated software) Bluetooth software
- Built-in software solutions with Bluetooth human interface device and comply with the standard version of the Bluetooth SIG Bluetooth 2.0

- Work with Windows 98, ME, 2000, Server 2003, XP and Vista
- Support SONY PS3;
- AA alkaline battery x2
- Frequency band: 2.402 - 2.480GHz unlicensed ISM band
- Receiving sensitivity: -75bm (standard)
- RF output power: up to 4dBm as maximum, good for your health with lowest radiates
- Operation distance: 10m
- Operation Temperature: 0-55°C
- Operation Humidity: 10%-85% RH at 25°C
- Storage Temperature: -20~+60°C
- Storage Humidity: 5%-95% RH at 25°C

Installation Guide

Step1. Inserting Batteries

1. Open the Battery Cabinet as below..
2. Insert 2Pcs AA alkaline batteries. (Please refer to the diagram above for the polarity of batteries).
3. Close the Battery Cover, press the Connect Button on the bottom.



Step2. Connecting the Keyboard to the Dongle.

Before you install the Bluetooth Keyboard, please make sure that the Bluetooth Dongle has been installed. Software available like Widcomm(Recommended), IVT or the Microsoft built-in software(can not connect to the headset).

Press and release the match button at the bottom, the White LED light on the right side of the keyboard will change to a flashing model, and this is the match process.

Match Procedure

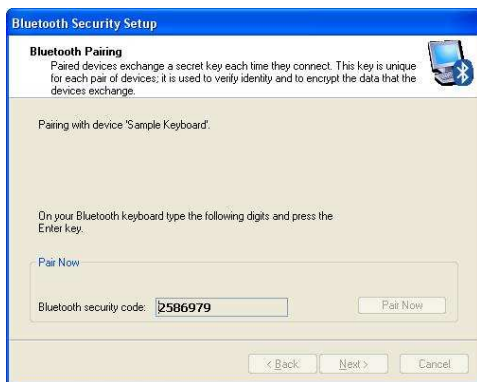
A: Match on Widcomm (recommended)



1. Double click the Icon again, "My Bluetooth Place" pops up; select "Bluetooth ---Add Bluetooth facility". Click "Next" button In the Setup Guild window.



2. When the system finds the Keyboard, select it and click “Next”.
3. Input the stochastic Match Code, and confirm.



4. Now you can use your keyboard at ease.

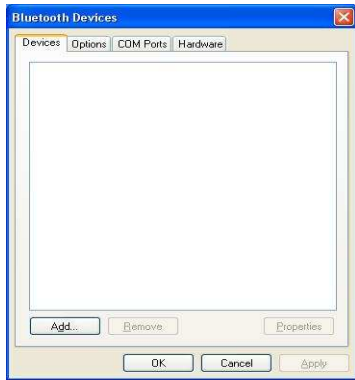
Tips:

If you are using the Widcomm Bluetooth Software, select the keyboard icon and click the right button of the keyboard and select “Status”, then you can check the power status of the batteries and setup alarm for shortage of battery.

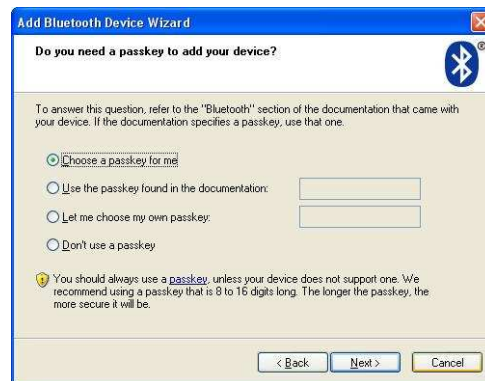
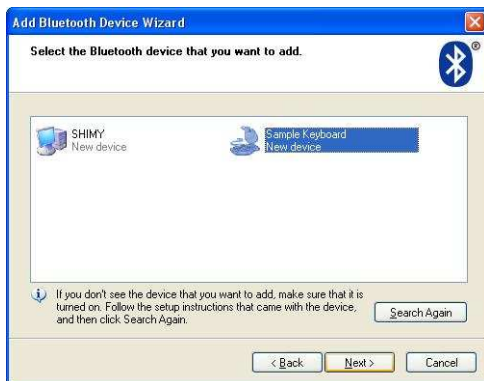


B. Match on Microsoft built-in software

1. Make sure that the Bluetooth Function has been activated. Double click the Bluetooth Icon on the Task Bar or in the Control Panel, open the “Bluetooth Management” window, click “Add”, tick off “facility is ready for searching”, click “Next”.



2. Wait till the keyboard is found, select keyboard and click “Next”.



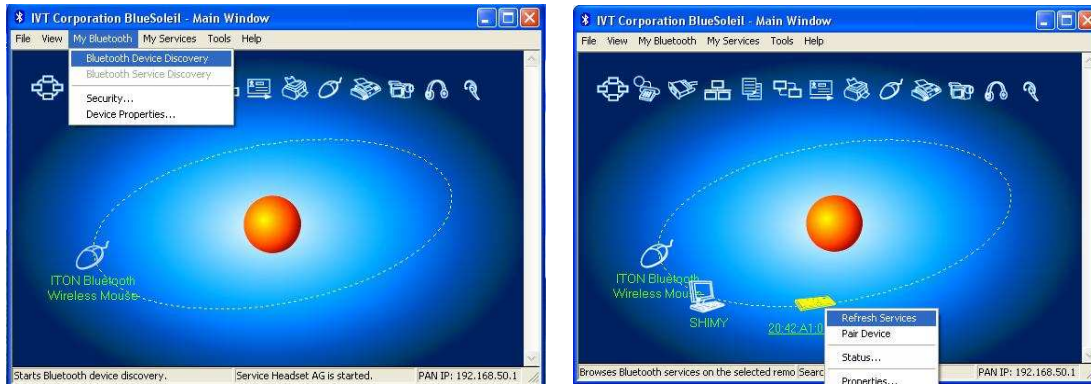
3. Select” Choose a pass key for me”, click “Next”.

4. Input the pass key and press “Enter”, click “Next”, the system will finish the installation of the new facility automatically.

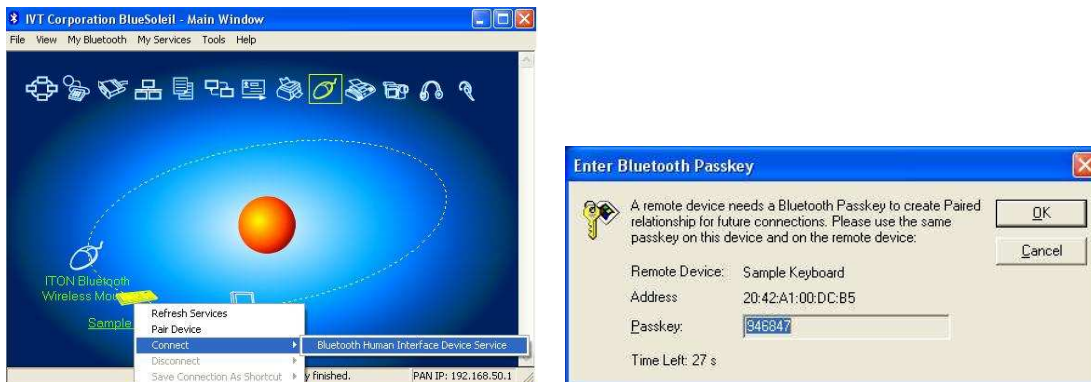


C. Match on IVT Software

1. Make sure that the Bluetooth function is active. Double click the Bluetooth Icon, open the Management window, select “Search for Bluetooth facilities” or click the Round Ball in the middle of the window.



2. Click the Bluetooth Keyboard founded, click the right button for “Refresh Service”.
3. Select the Bluetooth Keyboard again, click the right button for “Connect-Bluetooth Input Service”, input the stochastic pass key, the system will auto install the HID facility. After that you can use your Bluetooth Keyboard at ease.



FAQ:

If unable to connect the Bluetooth Keyboard to the computer, or the Keyboard work unconventionally, please try the steps below:

1. Before you install your Bluetooth Keyboard, please make sure you have done the Bluetooth Dongle installation procedure, and the Bluetooth facility is turned on.
2. Press and release the connect button on the bottom of Bluetooth Keyboard. The blue led light will change into a flashing mode.
3. Make sure that the Computer is connected to the Bluetooth Keyboard. If they are matched to each other before, then under the Standby State, just double click the left button of the keyboard.
4. Make sure that the keyboard is within the effective range---10M.
5. Make sure that there’s no change of the Bluetooth facility. If anything changed, please kindly rematch.
6. If your Bluetooth facility is connected to other Bluetooth products, please kindly confirm that the speed of the Bluetooth facility is enough.
7. Please kindly check the batteries. If they are short of power, replace them for new ones.

FCC Statement

This equipment has been tested and found to comply with the limits for a Class B digital device, pursuant to part 15 of the FCC rules. These limits are designed to provide reasonable protection against harmful interference in a residential installation. This equipment generates, uses and can radiate radio frequency energy and, if not installed and used in accordance with the instructions, may cause harmful interference to radio communications. However, there is no guarantee that interference will not occur in a particular installation. If this equipment does cause harmful interference

to radio or television reception, which can be determined by turning the equipment off and on, the user is encouraged to try to correct the interference by one or more of the following measures:

- Reorient or relocate the receiving antenna.
- Increase the separation between the equipment and receiver.
- Connect the equipment into an outlet on a circuit different from that to which the receiver is connected.
- Consult the dealer or an experienced radio/TV technician for help.

To assure continued compliance, any changes or modifications not expressly approved by the party responsible for compliance could void the user's authority to operate this equipment. (Example- use only shielded interface cables when connecting to computer or peripheral devices).

FCC Radiation Exposure Statement

This equipment complies with FCC radiation exposure limits set forth for an uncontrolled environment and it also complies with Part 15 of FCC RF Rules. Operation is subject to the following two conditions:

- 1) This device may not cause interference and
- 2) This device must accept any interference, including interference that may cause undesired operation of the device.

Caution!

The manufacturer is not responsible for any radio or TV interference caused by unauthorized modifications to this equipment. Such modifications could void the user authority to operate the equipment.

Canada Statement

This Device complies with RSS-210 of the IC Rules, Operation is subject to the following two conditions:

- (1). This device may not cause interference and
- (2). This device must accept any interference received,, including interference that may cause undesired operation.