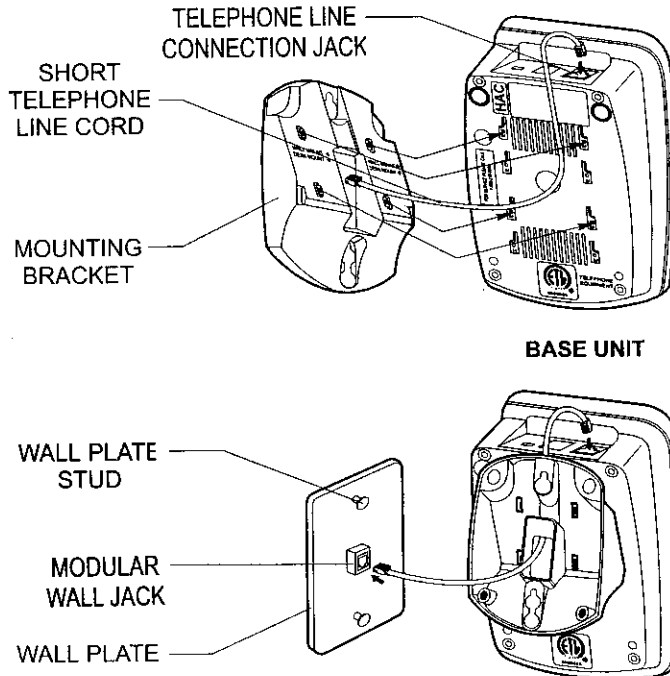


### Wall Mounting

You may choose to put the **BASE UNIT** of your cordless telephone on a wall.

1. With the back of the **BASE UNIT** facing up, connect the **SHORT TELEPHONE LINE CORD** to the **TELEPHONE LINE CONNECTION JACK**.
2. Insert the free end of the **SHORT TELEPHONE LINE CORD** through the hole of the **MOUNTING BRACKET**.
3. Insert the hooks of the **MOUNTING BRACKET** into the matching slots on the back of the **BASE UNIT** (as shown below). Then slide the **MOUNTING BRACKET** until it locks into place. Plug the free end of the **SHORT TELEPHONE LINE CORD** into the **MODULAR WALL JACK**.
4. Align the upper keyhole of the **MOUNTING BRACKET** with the upper stud of the wall plate, so that the opening end of the **MOUNTING BRACKET** matches the lower stud, then pull the **BASE UNIT** down until it is securely seated.



### Preparing for Use

Before you can use your cordless telephone, you must charge the **HANDSET** for 12 hours. Failure to do so will require recharging of the **BATTERY PACK** more often.

1. Place the **HANDSET** on the **BASE UNIT** for 12 hours.
2. After 12 hours, remove the **HANDSET** from the **BASE UNIT**.
3. **Raise or reposition the BASE UNIT ANTENNA** for the best reception.

*Before you can use your cordless telephone, you must charge the **HANDSET** for 12 hours. Failure to do so will require more frequent charging of the **BATTERY PACK**. See page 19 for more information on the **BATTERY PACK**.*

#### NOTE:

Depending on the frequency of use, once the **HANDSET** is fully charged, it remains functional for approximately 4 hours of continuous use and approximately 5 days when the **HANDSET** is off the **BASE UNIT** in **STANDBY** mode.

### IMPORTANT

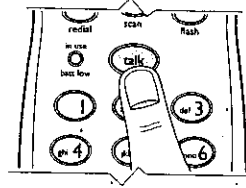
The **AC ADAPTOR** must always be plugged into an electrical outlet.

## Receiving Calls with the HANDSET on the BASE UNIT

1. When the phone rings, lift the **HANDSET**. The IN USE LED indicator will light up.

**NOTE:** The **HANDSET RINGER** Switch must be in the "ON" position for ringer to operate.

2. Start your conversation.
3. To end your conversation, either press the **talk** button or place the **HANDSET** on the **BASE UNIT**. If you place the **HANDSET** on the **BASE UNIT** charge cradle, you activate the **AUTOMATIC STANDBY** feature.



## Receiving Calls with the HANDSET off the BASE UNIT

1. When the phone rings, press the **talk** button. The IN USE LED indicator will light up.
2. Start your conversation.
3. To end your conversation, either press the **talk** button or place the **HANDSET** on the **BASE UNIT**. If you place the **HANDSET** on the **BASE UNIT** charge cradle, you activate the **AUTOMATIC STANDBY** feature.

**NOTE:** The **BASE UNIT** does not have a ringer and does not ring when receiving an incoming call.

**NOTE:**

If you are too far away from the **BASE UNIT**, the **HANDSET** emits "beep" sounds to warn you that the background noise level is too high for proper communication between the **HANDSET** and the **BASE UNIT**. When you hear this sound, you should move closer to the **BASE UNIT** to reduce the noise level. Otherwise, the call will automatically cut off.

## Placing Calls

1. Press the **talk** button. The IN USE LED indicator will light up.
2. Listen for a dial tone.
3. Dial the phone number.
4. When you have finished your call, press the **talk** button again. The IN USE LED indicator will turn off.

## Redial Feature

1. If you get a busy tone, press the **talk** button to hang up.
2. Later, press the **talk** button again.
3. Listen for a dial tone.
4. Press the **redial** button. This will automatically redial the last telephone number you called.

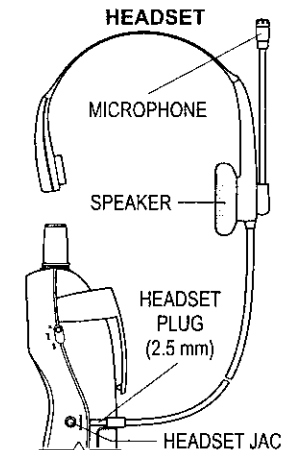
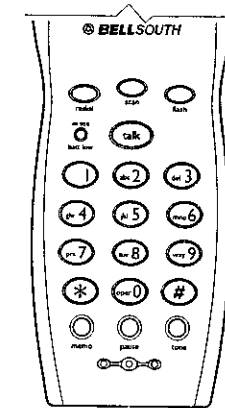
## Using the Headset Feature

Your telephone can utilize a headset (not included) to be connected to your **HANDSET** for you to enjoy hands-free communication.

Insert the small plug at the end of the headset into the **HEADSET JACK** at the right side of the **HANDSET**. Follow the procedures discussed in "Receiving Calls" and "Placing Calls" to receive and place a call.

**NOTE:**

When you plug the headset plug into the **HEADSET JACK** it automatically mutes the **MICROPHONE** and **SPEAKER** of the **HANDSET**. Unplug the headset to return the **HANDSET** to normal use.

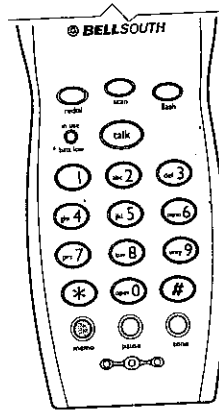


Headsets are available at most retail outlets that sell telephone equipment. The **HEADSET JACK** is compatible with 2.5 mm headset plugs only.

## Storing Numbers

### Storing Numbers

1. Be sure the **BASE UNIT IN USE** LED indicator is off and the **HANDSET** is in **STANDBY** mode (See Special Features Section).
2. Press the **memo** button.
3. Dial the number you want to store.
4. Press the **memo** button again.
5. Dial the **TELEPHONE KEYPAD** (0-9) button where you want to store that number. You will hear one confirmation "beep."
6. Write the name of the person you will be calling with that number next to the corresponding index number on the **TELEPHONENUMBERCARD**.
7. Repeat steps 1 through 6 to store other telephone numbers.



**EXAMPLE :** To store the number 703-1968 under the **TELEPHONE KEYPAD** 1 button:

- 1 - Press the **memo** button.
- 2 - Dial 703-1968.
- 3 - Press the **memo** button again.
- 4 - Press the **TELEPHONE KEYPAD** 1 button.
- 5 - You have stored 703-1968 under **TELEPHONE KEYPAD** 1 button.

A total of 10 telephone numbers can be programmed in memory.

**IMPORTANT:** The maximum number of digits that can be stored for any phone number is 16 in **PULSE** or **TONE** mode. The maximum number of digits for mixed (**TONE** and **PULSE** in combination) dialing is 15. If you are using a switchboard system to access an outside line (such as an 8 or 9), press the **pause** button to store a **PAUSE**.

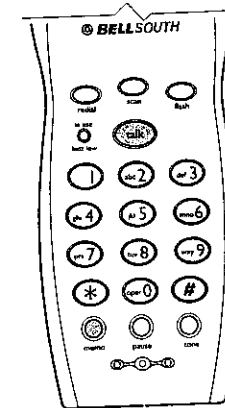
## Recalling Stored Numbers

### Recalling Stored Numbers from Memory

1. Press the **talk** button.
2. Press the **memo** button.
3. Press the **TELEPHONE KEYPAD** button for the number you have stored. The stored number will be dialed automatically.

**EXAMPLE:** To recall number 703-1968 stored under **TELEPHONE KEYPAD** 1 button:

- Press the **talk** button.
- Press the **memo** button.
- Dial 1.



### IMPORTANT

To obtain the best reception, be sure to raise or reposition the **BASE UNIT ANTENNA**.

## Security

### Security System

Your cordless telephone uses a digital coding security system to prevent unauthorized use of your telephone line by another nearby cordless telephone. The system has its own identifying signal created by microcomputers in both the **BASE UNIT** and **HANDSET**.

### Security Code

This telephone has an internal security code with 65,536 possible combinations.

### Resetting Security Code and Channel Information

Communication between **HANDSET** and **BASE UNIT** may not be possible in any of the following situations:

1. After a power failure.
2. After relocating the **BASE UNIT** by disconnecting the **AC ADAPTOR**.
3. After replacing the **HANDSET BATTERY PACK**.

To reset, place the **HANDSET** on the **BASE UNIT** for 2 to 5 seconds.

### Multi-Channel Access

Your cordless telephone lets you select a channel from the 40 frequencies available to transmit signals between the **BASE UNIT** and **HANDSET**. When you notice interference from other cordless telephones, change to another channel by pressing the **scan** button on the **HANDSET**.

### IMPORTANT

When you hear interference, press the **scan** button to change the operating channel

## Recharging the BATTERY PACK

### Battery Type

Use the following type and size of **BATTERY PACK**:

Cordless Telephone **BATTERY PACK**  
3.6V, 600 mAh  
U.S. Electronics Inc.  
Ni-Cd **BATTERY PACK**: Model B650



Ni-Cd

This **BATTERY PACK** is available through:

**U.S. Electronics Service Center**  
105 Madison Avenue  
New York, NY 10016  
1-800-828-5208

### Recharging the BATTERY PACK

The nickel cadmium (Ni-Cd) **BATTERY PACK** in the **HANDSET** can be recharged many times using the built-in charger in the **BASE UNIT**.

When the **BATT LOW** LED indicator starts to blink rapidly, a "beep" sound will be heard every 12 seconds. This indicates that the **BATTERY PACK** needs to be recharged.

Charge the **BATTERY PACK** at least once every 90 days of non-use to avoid battery failure. When the **BATTERY PACK** can no longer be charged, replacement of the **BATTERY PACK** will be necessary.

The **BATTERY PACK** used in your telephone may develop a condition known as "MEMORY." Once subjected to a regular short discharging routine, the battery assumes the discharging pattern it was subjected to. This causes rapid discharging thereby shortening the **BATTERY PACK** charge span. If you believe your **BATTERY PACK** has developed a "MEMORY" condition, do not charge the **HANDSET** until the **BATT LOW** LED indicator comes on. When it does come on, charge the **HANDSET** fully for 12 hours.

### IMPORTANT

In order to get maximum life from the **HANDSET BATTERY PACK**, be sure to charge the **HANDSET** for 12 hours before initial use.

## Changing the BATTERY PACK

### Changing the BATTERY PACK

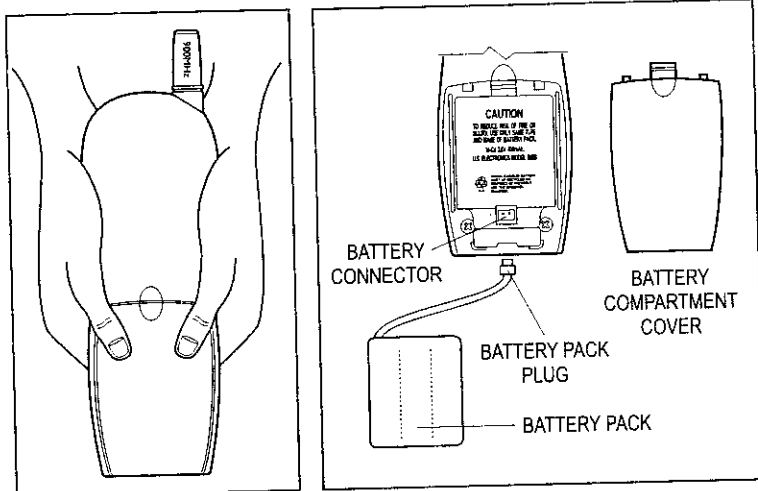
The BATTERY PACK provides power for the **HANDSET** of your cordless telephone.

#### To Replace the BATTERY PACK:

1. Remove the **HANDSET BATTERY COMPARTMENT COVER** by sliding it down.
2. Pull out the **BATTERY PACK PLUG** and remove the **BATTERY PACK**.
3. Plug the new **BATTERY PACK** into the **BATTERY CONNECTOR**.
4. Slide the **HANDSET BATTERY COMPARTMENT COVER** firmly into place in its closed position.
5. Before use, charge the new **BATTERY PACK** for 12 hours.

#### ATTENTION:

The product that you have purchased contains a rechargeable BATTERY PACK. The BATTERY PACK is recyclable. At the end of its useful life, under various state and local laws, it may be illegal to dispose of this BATTERY PACK into the municipal waste stream. Check with your local solid waste officials for details in your area for recycling options or proper disposal.



Remove the **HANDSET BATTERY COMPARTMENT COVER** by sliding it down.

## Problem Solving

### Problem Solving Section

For your assistance, we have listed below a few common problems.

#### Phone does not work, check the following:

1. **BASE UNIT** is plugged into power source.
2. **HANDSET** is charged.
3. **TONE/PULSE** switch is in the right position.
4. **TELEPHONE LINE CORD** is plugged into the **TELEPHONE JACK**.

#### Range of phone limited, check the following:

1. **ANTENNA** on **BASE UNIT** is raised.
2. **BASE UNIT** is centrally located in your residence.
3. **BASE UNIT** is not located near appliances.

#### No dial tone, check the following:

1. **TELEPHONE LINE CORD** plugs are connected to the **TELEPHONE JACK** and **TELEPHONE LINE CONNECTION JACK**.
2. **BASE UNIT** is plugged into power source.
3. If you had a power failure or had unplugged the **BASE UNIT**, replace the **HANDSET** on the **BASE UNIT** for 2 to 5 seconds to reset the system.

#### Received signal flutters or fades, check the following:

1. **BATTERY PACK** in **HANDSET** is fully charged.
2. **HANDSET** is not too far from the **BASE UNIT**.
3. **ANTENNA** on **BASE UNIT** is raised.

#### Interference on reception, check the following:

1. Noise may be picked up from electrical products in the home or electrical storms. Generally, this noise is a minor annoyance and should not be interpreted as a defect in your system. (See Technical Information on page 22).
2. Choose an alternate channel using the **scan** button on the **HANDSET**.

#### Excess static, check the following:

1. Check to see that the **ANTENNA** is not touching another metal object.
2. Raise or reposition the **ANTENNA**.

#### If after pressing the **talk** button, you receive three "beeps" and no dial tone, check the following:

1. **BASE UNIT** is plugged into power source.
2. If you had a power failure or had unplugged the **BASE UNIT**, replace the **HANDSET** on the **BASE UNIT** for 2 to 5 seconds to reset the system.

**NOTE:** If none of the telephones in the house are working, disconnect one set at a time to verify that none of the phones are causing the problem. If you still have a problem after doing this, and your telephone still does not work, please contact your local phone company.

## Technical Information

### Technical Information

This cordless telephone uses radio frequencies to allow mobility. There are certain difficulties in using radio frequencies with a cordless telephone. While these are normal, the following could affect the operation of your system.

#### Noise

Electrical pulse noise is present in most homes at one time or another. This noise is most intense during electrical storms. Certain kinds of electrical equipment such as light dimmers, fluorescent bulbs, motors, and fans also generate noise pulses. Because radio frequencies are susceptible to these noise pulses, you may occasionally hear them in your **HANDSET**. Generally they are a minor annoyance and should not be interpreted as a defect in your system.

#### Range

Because radio frequency is used, the location of the **BASE UNIT** can affect the operating range. Try several locations in your home or office and pick the one that gives you the clearest signal to the **HANDSET**.

#### Interference

Electronic circuits activate a relay to connect the cordless telephone to your telephone line. These electronic circuits operate in the radio frequency spectrum. While several protection circuits are used to prevent unwanted signals, there may be periods when these unwanted signals enter the **BASE UNIT**. You may hear clicks or hear the relay activate while you are not using the **HANDSET**. If the interference occurs frequently, it can be minimized or eliminated by lowering the height of your **BASE UNIT ANTENNA** or by relocating the **BASE UNIT**. You can check for interference before selecting the final **BASE UNIT** location by plugging in the phone.

#### NOTICE:

This cordless telephone uses radio communication between the **HANDSET** and the **BASE UNIT** and may not ensure privacy of communication. Other devices, including other cordless telephones, may interfere with the operation of this cordless telephone or cause noise during operation. Units not containing coded access may be accessed by other radio communication systems. Cordless telephones must not cause interference to any licensed radio service.

## FCC Requirements

### Federal Communications Commission Requirements

This equipment complies with Part 68 of the FCC Rules. A label on the **BASE UNIT** of this equipment contains, among other information, the FCC Registration Number and the Ringer Equivalence Number (REN) for this equipment. You must, upon request, provide this information to your telephone company.

The REN is also useful in determining the quantity of devices that you may connect to your telephone line and still allow these devices to ring when your telephone number is called. In most areas, but not all, the sum of the RENs for all devices connected to one line should not exceed five (5.0). To be certain of the number of devices that you may connect to your line, you should contact your local telephone company.

If your equipment should cause harm to the telephone network, the telephone company may temporarily disconnect your service. If possible, they will notify you in advanced that temporary discontinuance of service may be required. However, when advanced written notice is not possible, the telephone company may temporarily discontinue service without notice if such action is necessary under the circumstances. The telephone company may make changes in its communication facilities, equipment, operations, or procedures where such action is reasonably required in the operation of its business and is not inconsistent with the rules and regulations of the Federal Communications Commission. **Do not attempt to repair or modify this equipment.**

**WARNING:** Changes or modifications not expressly approved by the party responsible for its compliance could void the user's authority to operate the equipment.

Some cordless telephones operate at frequencies that may cause interference to nearby TVs and VCRs. To minimize or prevent such interference, the **BASE UNIT** of the cordless telephone should not be placed on or near a TV or VCR. If interference is experienced, moving the cordless telephone farther away from the TV or VCR will often reduce or eliminate the interference.

This equipment should not be used on coin telephone lines. Connection to party line service is subject to state tariffs. If trouble is experienced, disconnect this equipment from the telephone line to determine if it is causing the malfunction. If the equipment is determined to be malfunctioning, its use should be disconnected until the problem has been corrected.

### IMPORTANT

In order to get maximum life from the **HANDSET BATTERY PACK**, be sure to charge the **HANDSET** for 12 hours before initial use.

## FCC Requirements

### *Federal Communications Commission Requirements (continued)*

**NOTE:** This equipment has been tested and found to comply with the limits for a class B digital device, pursuant to Part 15 of the FCC Rules. These limits are designed to provide reasonable protection against harmful interference in a residential installation. This equipment generates, uses and can radiate radio frequency energy and, if not installed and used in accordance with the instructions, may cause harmful interference to radio communications.

However, there is no guarantee that interference will not occur in a particular installation. If this equipment does cause harmful interference to radio or television reception, which can be determined by turning the equipment off and on, the user is encouraged to try to correct the interference by one or more of the following measures.

1. Reorient or relocate the receiving ANTENNA.
2. Increase the distance between the equipment and the receiver.
3. Connect the equipment into an outlet on a circuit different from that to which the receiver is connected.
4. Consult the dealer or an experienced radio/TV technician for help.

## Warranty

### *Warranty Information*

#### **BellSouth Products**

##### **One-Year Limited Warranty**

This limited warranty sets forth all **BellSouth Products** responsibilities regarding your product. There are no other expressed or implied warranties from **BellSouth Products**.

#### **Warranty Service Provided**

If you purchased the telephone new from a retail vendor, **BellSouth Products** warrants the telephone against defects in material and workmanship for a period of one (1) year from the original date of purchase. This warranty is in lieu of all other expressed warranties. This warranty begins when you purchase the telephone and continues for one (1) year unless you sell or rent the telephone, in which case the warranty stops.

**BellSouth Products** disclaims any implied warranty, including the warranty of merchantability and the warranty of fitness for a particular purpose, as of the date of 90 days from your original purchase of the telephone. **BellSouth Products** assumes no responsibility for any special, incidental, or consequential damages.

This warranty gives you specific legal rights and you may have other rights which vary from state to state. Some states do not allow the exclusion or limitations of special, incidental or consequential damages, or limitations on how long a warranty lasts, so the above exclusion and limitation may not apply to you.

#### **Warranty Service Not Provided**

This warranty does not cover damage resulting from accident, misuse, abuse, improper installation or operation, lack of reasonable care, unauthorized modification, the affixing of any attachment not provided by **BellSouth Products** with the telephone and/or loss of parts. This warranty is voided in the event any unauthorized person opens, alters or repairs the telephone. All **BellSouth** equipment being returned for repair must be suitably packaged. Telephone companies use different types of equipment and offer various types of services to customers. **BellSouth Products** does not warrant that this telephone is compatible with the type of equipment of any particular telephone company or the services provided by it.

***What to Do for Warranty Service***

During the first thirty (30) days, a defective product is eligible for over-the-counter exchange at the retailer from whom it was purchased. After thirty (30) days, the defective product should be returned to the authorized service center. Please allow 2-3 weeks for the return of your telephone product. The shipping address of the authorized service center is:

U.S. Electronics CONSUMER CENTER  
C/O Southern Bonded Warehouse  
1491 Mt. Zion Rd.  
Morrow, GA 30260

**NOTE:** A product received which was not made for **BellSouth Products** or which is not defective as determined by our test procedures will not be repaired and will be returned C.O.D., freight.

***To Obtain Warranty Service***

- Provide proof of the date of purchase within the package.
- Prepay all shipping costs to the authorized service center.
- Include a return shipping address within the package.

Please retain your sales receipt, the carton, the packing materials, and the printed material. The original carton is the best shipping container for the telephone should you have to return it.

For your reference:

Serial number \_\_\_\_\_  
Date of Purchase \_\_\_\_\_  
Name of Dealer \_\_\_\_\_

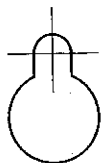
***Customer Service Telephone Number:***

***1-800-210-8950***

***OUTSIDE THE U.S.A. CALL 1-212-242-6978***

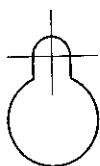


## Wall Mount Template



This page serves as a template for attachment of screws to the wall when mounting this telephone on the wall.

1. Cut out this page.
2. Use this template to determine the distance between screws when mounting this phone on the wall. The two cross hairs identify where to attach the screws.



### IMPORTANT

In order to get maximum life from the HANDSET BATTERY PACK, be sure to charge the HANDSET for 12 hours before initial use.

### IMPORTANT

Placing your BASE UNIT near appliances such as televisions, refrigerators, radios, or microwave ovens may cause interference.

### IMPORTANT

When you hear interference, press the **scan** button to change the operating channel.

### IMPORTANT

The AC ADAPTOR must always be plugged into an electrical outlet.

### IMPORTANT

To obtain the best reception, be sure to raise or reposition the BASE UNIT ANTENNA.

### IMPORTANT

If you live in an area which receives frequent thunderstorms, we strongly recommend plugging your AC ADAPTOR into a surge protector.