

虚线不用打印



## Colorful Intelligent LED Lights Instruction

### App Download and Installation

Scan the right two-dimensional code to download APP.

Pls click APP to enter the app registration, login interface, enter the mobile phone number to obtain a verification code to register or through the page below the other way through the authorized interface after login.



### EZ Mode Network Distribution Process

Connect the lamp to the power supply and make sure the lamp is flashing rapidly. If the lamp is not flashing rapidly, turn off the lamp and turn the lamp on and off as follows: On-Off-On-Off-On, the switching interval can not exceed 10 seconds.

Open APP, click "Add Device" or "+" on the interface, and click the "Indicator Flashing" button, select the local WIFI point and enter the correct password, click "Next" device to start configuration (Currently does not support the 5G band WIFI network)

During the configuration, the flashing state of the lamp changes from flashing to breathing state (light over dark repeatedly), and finally to the steady state. If the indicator is steady or the message "Add Success" appears on the APP interface, Configuration is successful, click "ok"

### AP Mode Distribution Network Process

Connect the lamp to the power supply and make sure the lamp is in the slow flashing state. If not, adjust the lamp to a slow flashing state as follows:

. Adjust the light in the fast flashing state, the specific steps refer to the fast connection mode with the first step of the process

II. When the lamp is flashing rapidly, switch the lamp on and off as follows: OFF - ON - OFF - ON - OFF - ON, the switching time interval should not exceed 10 seconds. Making the lamp in the slow flashing state.

Open the APP, click on AP "add device" or "+" and then click the top right corner of the "hot mode", click the "light slowly flashing" button and click "Next", click "to connect" to enter the phone WIFI interface, Select the "smart life" wifi hotspot, return to APP, the device starts configuration, configuration process, the flashing state of the light from the slow flash into breathing (light dark over repeated), the indicator is steady, if the "Add Success" message appears in App interface, it indicates that the lamp is configured successfully. Click "ok".



# Using Amazon Echo Quick Guide

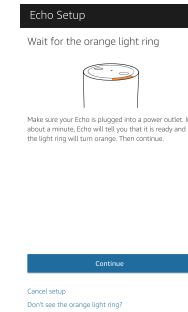
## Preparation

- Amazon Alexa APP
- Amazon Alexa account ( users need to register their own account)
- Our Smart APP
- Our Smart APP account (users need to register their own account, select region as "The United States")
- Echo, Echo Dot ,Tap and other Amazon voice-operated devices
- Our smart device (for example, Smart Socket)

Rename the device after configuring successfully, The name of the device is recommended to use easy pronunciation of the English words.

## Set your Echo Speaker by Alexa APP

- Sign in with Alexa account&password. (If not registered, sign up first.) After login, click the menu at the top left, then click "Settings", and choose "Set up a new device";
- Choose a device (for example, Echo). When the right page appears, long press the small dot on your Echo device until the light turns to be yellow. Then click "Continue" on App. (Note: at this time the mobile phone can not open a variety of VPN software)
- Choose users' wifi and wait for a few minutes.
- After an introduction video, click next step, it will go to "Home" page automatically. Now the Echo is connected to Alexa APP through WiFi successfully .



## Enable Our Skill in Alexa APP

- Choose "Skills" in the options bar, and then search "Smart life" in the input box; Select "Smart life" in the search results, and then click "Enable Skill". (Note: If there are more than one test, there will be the interface on the right, which indicates that the account has been bound. You can click on the "Disabel Skill" to remove the binding, and then click on the "Enable Skill" to continue to bind a new Smart life account.)
- Input the user name and password that you had previously registered (Only support the account in the United States); When you see the right page, it means the Alexa account is linked with Smart life account.

## Control Smart Bulb by Voice

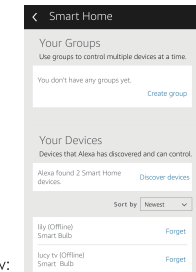
After the previous operation is successful, you can control the Bulb via Echo.

- Discover devices : Firstly, users need to say to Echo: "Echo(or Alexa), Discover my devices." Echo will start to finding the devices which is added in APP, it will take about 20 seconds to show the result. Or click "Discover devices" in Alexa APP, it will show the devices that found successfully.

Note: "Echo" is one of the wake-up name, which can be any of these three names ( Settings): Alexa/Echo/Amazon

- Support Skill List  
User can control devices by instructions like below:  
Alexa, turn on [bedroom bulb]  
Alexa, turn off [bedroom bulb]

Note: The name of the device must be consistent with the addition of app.



**FCC STATEMENT.**

This device complies with part 15 of the FCC Rules. Operation is subject to the following two conditions: (1) This device may not cause harmful interference, and (2) this device must accept any interference received, including interference that may cause undesired operation.

Any Changes or modifications not expressly approved by the party responsible for compliance could void the user's authority to operate the equipment.

**Note:** This equipment has been tested and found to comply with the limits for a Class B digital device, pursuant to part 15 of the FCC Rules. These limits are designed to provide reasonable protection against harmful interference in a residential installation. This equipment generates uses and can radiate radio frequency energy and, if not installed and used in accordance with the instructions, may cause harmful interference to radio communications. However, there is no guarantee that interference will not occur in a particular installation. If this equipment does cause harmful interference to radio or television reception, which can be determined by turning the equipment off and on, the user is encouraged to try to correct the interference by one or more of the following measures:

- Reorient or relocate the receiving antenna.
- Increase the separation between the equipment and receiver.
- Connect the equipment into an outlet on a circuit different from that to which the receiver is connected.
- Consult the dealer or an experienced radio/TV technician for help.

The antenna(s) used for this transmitter must be installed to provide a separation distance of at least 20 cm from all persons and must not be co-located or operating in conjunction with any other antenna or transmitter Device