

# DVR JD-2000 System

## JD-2000 User's Manual



Thank you very much for your intelligent selection of DVR JD-2000 System, a digital video recorder system.

You are always assured of the best quality from us.

We expect your valuable patronage.

Yours faithfully,  
Management and staffs of  
Joongang Telecom

**Joongang Telecom Co., Ltd**

## υ Copyrights

No part of the software as well as this manual may be reproduced or transmitted in any form or by any means for any purpose other than the purchaser's personal use, without the express written permission of Joongang Telecom Co., Ltd.

Such a violation may be punished.

Copyright, Joongang Telecom Co., Ltd. All rights reserved.

## υ Upgrade and After Sales Service

DVR System and its programs and information contained in this manual is subject to change without notice to upgrade quality and functions, and does not represent a commitment on the part of Joongang Telecom Company. You may get a copy of upgraded program and software from Joongang Telecom Company.

## υ Warranty

1. You shall be given after sales service free of charge during \_\_\_\_ years after buying DVR JD-2000.
2. You shall be responsible for failures of DVR JD-2000 caused by reasons in the below, and accordingly shall pay our after sales service even during the warranty period:
  - 1) Careless use and wrong operation;
  - 2) Failures by repairing at your discretion, not by after sales service engineers and/or technicians of Joongang Telecom.
3. You shall pay our after sales service after expiration of the warranty period.
4. For more information of after sales service, call over phone or visit DVR Business Division of Joongang Telecom.
5. You are not assured of after sales service against failures of DVR JD-2000 caused by force majeure.

**Windows herein belongs to trademark of Microsoft Company.**

## υ **Specifications**

1. MAIN PROCESSOR : P-II500Mhz or above
2. MAIN BOARD : ATX Main Board
3. MAIN MEMORY : 64MByte or above
4. HARD DISK DRIVE : 15G Byte
5. VGA CARD : AGP 8 Mbytes or above(Voodoo,Savage chip series)
6. FLOPPY DISK DRIVE : 3.5 inch 1 piece
7. MOUSE : PS/2 MOUSE
8. KEYBOARD : 106 Key
9. D.V.R BOARD : JD-Lite PCI Card
  - Camera Input : 16 Port 75 NTSC/PAL
  - Sensor Input : 16 Port
  - Digital Output : 4 Port

## υ **Before calling After Sales Service department**

At first, read this manual carefully to know whether you can repair DVR JD-2000 by yourself.

When you cannot do it, get in touch with DVR Business Division of Joongang Telecom to find out a good solution after checking details of your problems.

# Table of Contents

## Chapter 1. Installation and Registration of JD-2000 System

1-1 JD-2000 System Program Installation

1-2 JD-2000 System Card Installation

1-3 JD-2000 System Operation Check

1-4 Setup HDD DMA function.

## Chapter 2. JD-2000 LOCAL System Operation

2-1 JD-2000 System Configuration

2-2 Recording Program Menu

2-3 Control Program Menu

2-4 Search Program Menu

2-5 JD-2000 System Functions

## Chapter 3. JD-2000 LAN/MODEM System Operation

3-1 Client Images Inquiry

3-2 Server Monitoring

3-3 Server Images Inquiry

3-4 JD-2000 LAN/MODEM System Operation

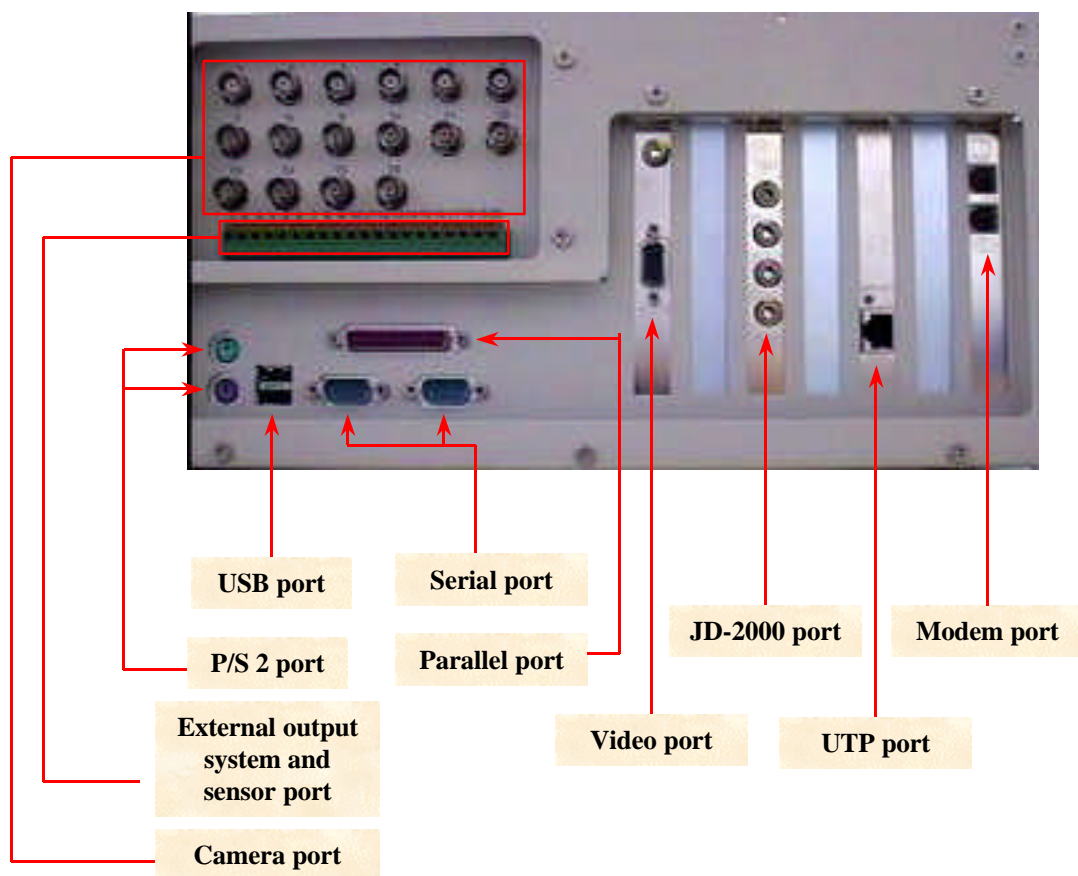
## Chapter 4. Question & Answer of JD-2000 System



## 1-2 JD-2000 System Card Installation

1-2-1 JD-2000 board is a kind of P&P board of PCI way (There exists no jumper). Turn your computer OFF to open main body. Then, find out empty PCI slot and put the board into it.

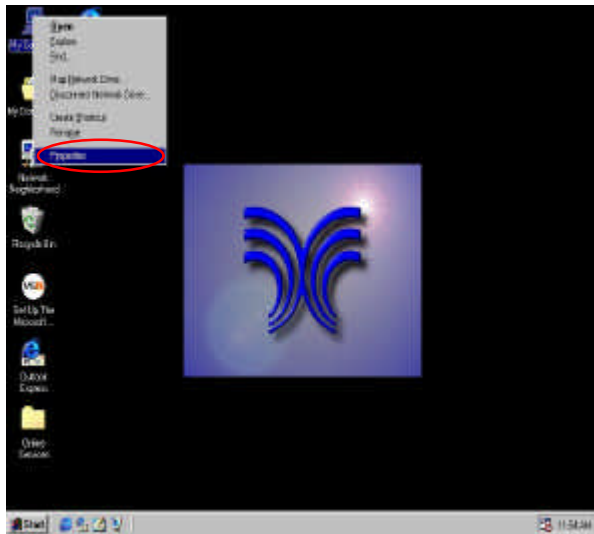
1-2-2 Close the main body. Connect BNC cables to necessary ports among 16 camera ports in the rear of main body. You also connect BNC cable at opposite side to camera.



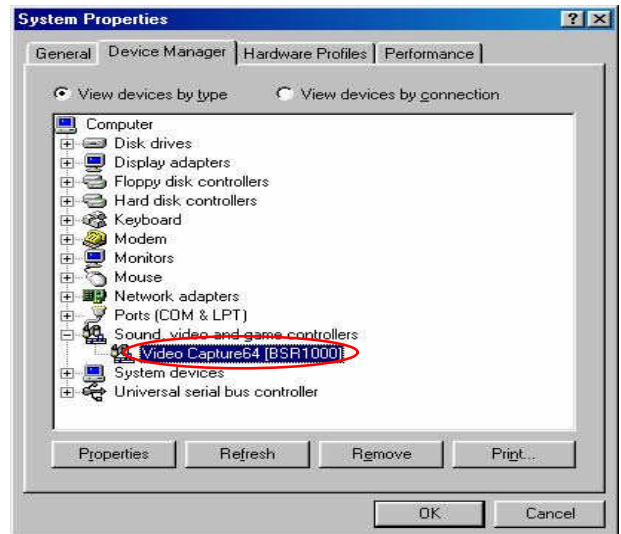
1. Camera port : Connect BNC cable of No. 1 ~4 camera. Each port has its own number.
2. External output system and Sensor port : Connect not only cables of No. 1 ~ 4 sensor, but also four (No. 17~20) of external output system. Each port has its own number.
3. JD-2000 port : Connect four cameras. The port is used when camera port is not used.
4. Serial port : Make use of serial port No. 1 to use Pan/Tilt.
5. Other ports : When you make use of monitor, keyboard, mouse, LAN, modem and so on, you may use other ports.

## 1-3 JD-2000 System Operation Check

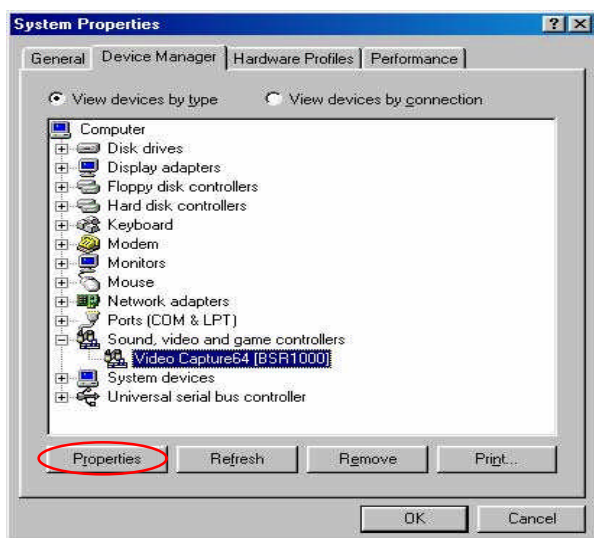
1-3-1 At first, click My Computer icon, and then click right-hand button of mouse to display menu in the below. Then, click registration information.



1-3-2 Make System Registration Information window become active. Check that a controller named 'Video Capture64[BSR1000]' has been registered in 'Sound, Video and Game Controller'.



1-3-3 Select 'Controller', and then click Registration Information.



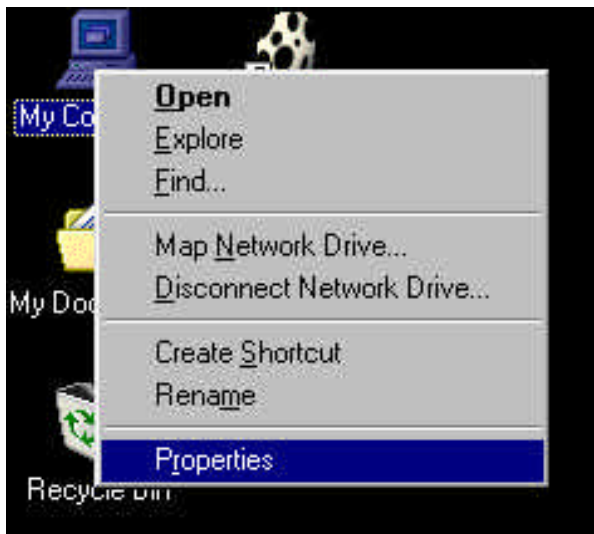
1-3-4 Make Registration Information window become active. Then, a message of 'The system runs correctly' indicates normal installation of the system.



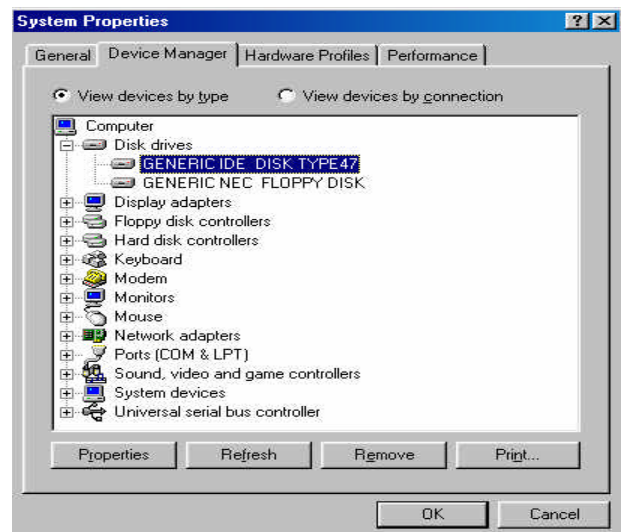


## 1-4 Set-up HDD DMA Function

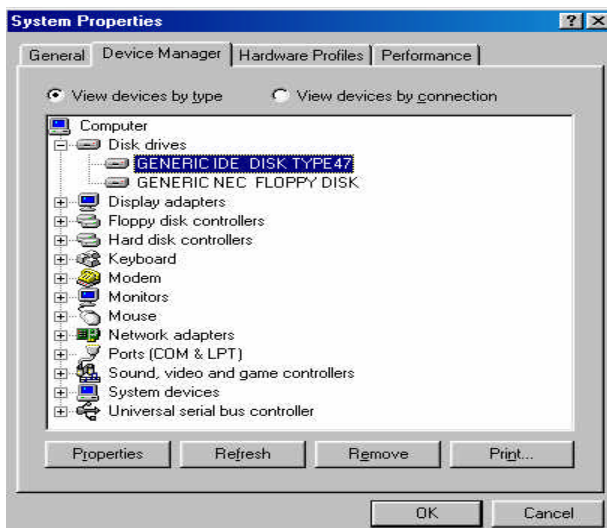
1-4-1 At first, click My Computer icon, and then click right-hand button of mouse to display menu in the below. Then, click registration information.



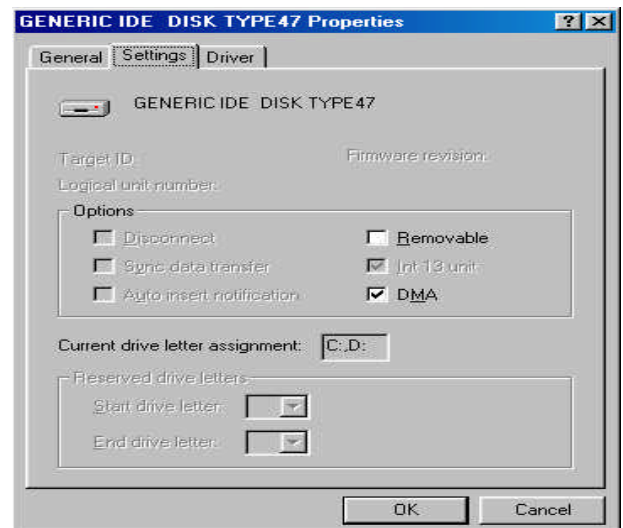
1-4-2 After window become active, Click Disk Drives.



1-4-3 Select 'GENERIC IDE DISK TYPE', Then Click [Properties]



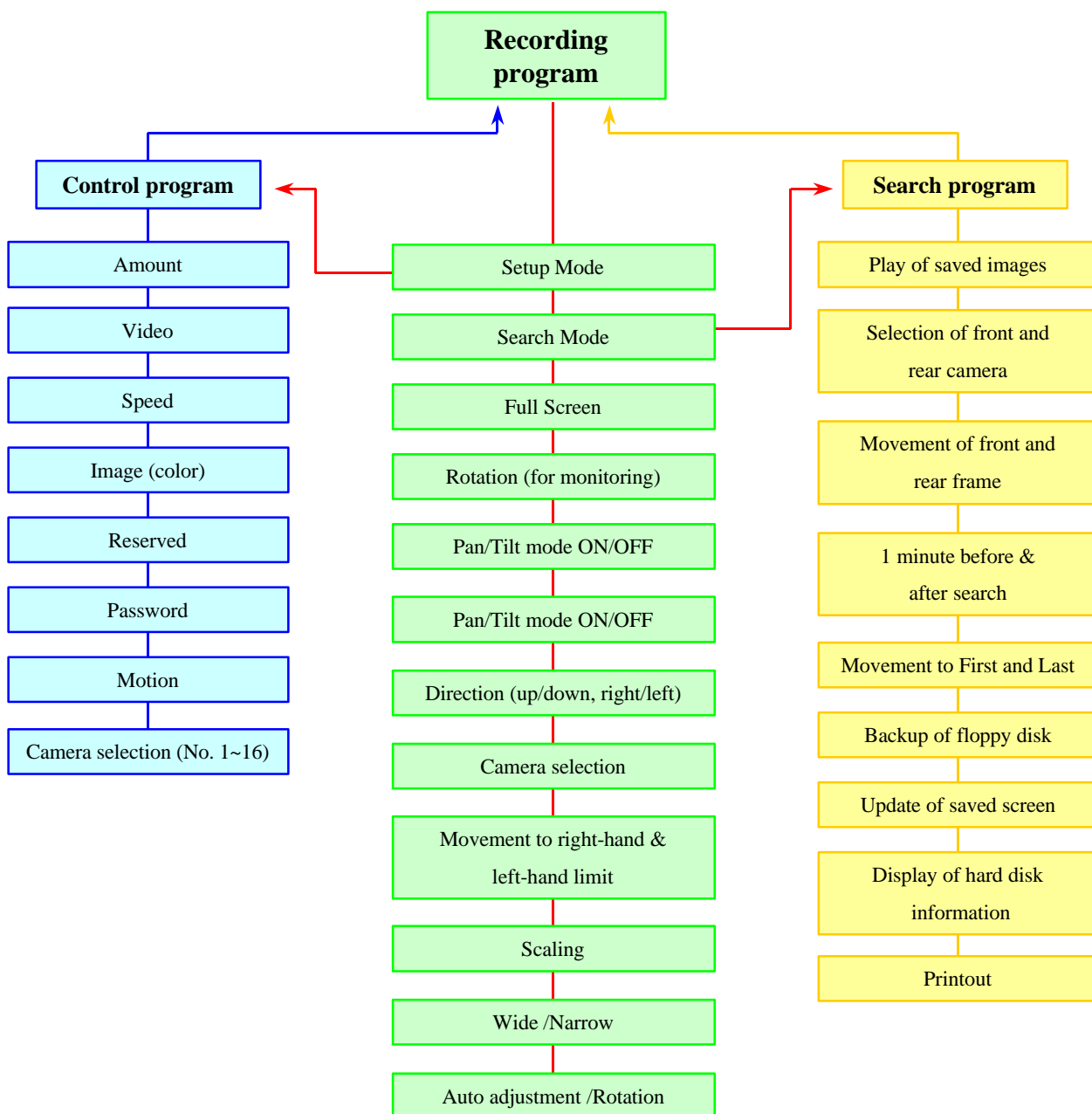
1-3-4 Click [Settings], select DMA. Then reboot the system to complete set-up DMA function.



## Chapter 2.

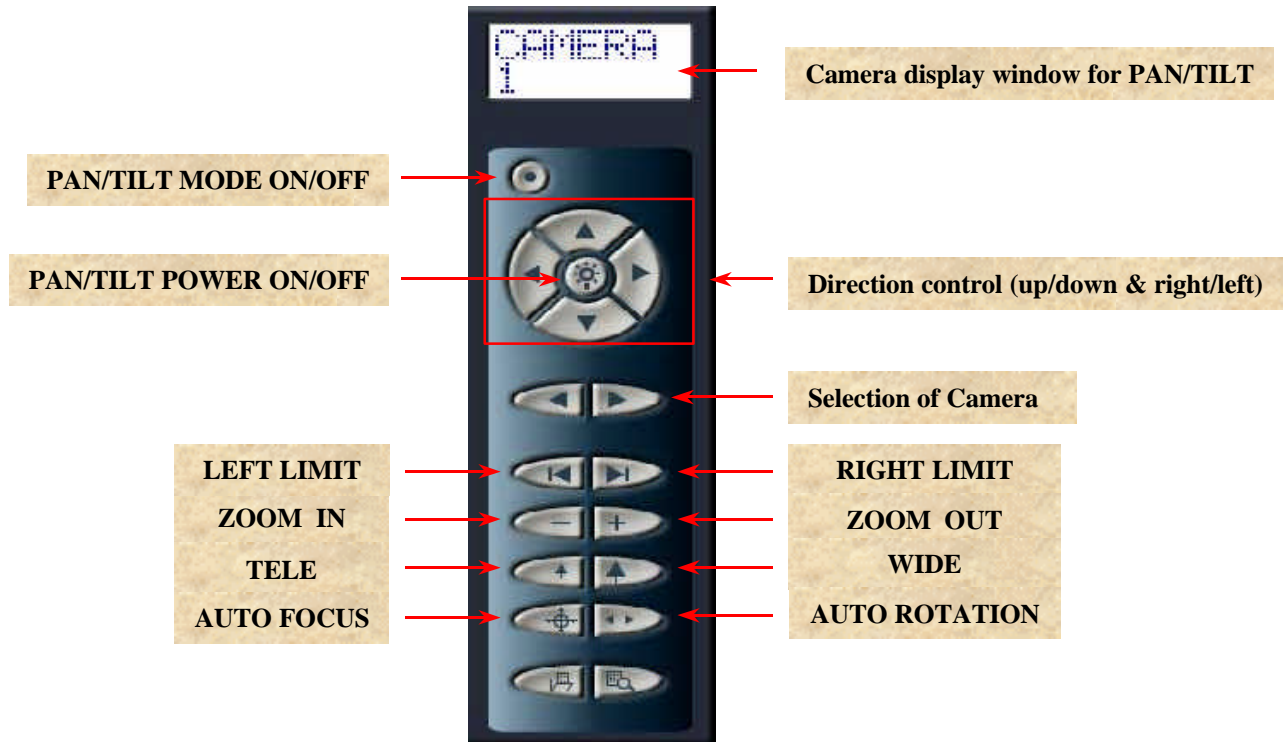
### JD-2000 Local System Operation

#### 2-1 JD-2000 System Configuration



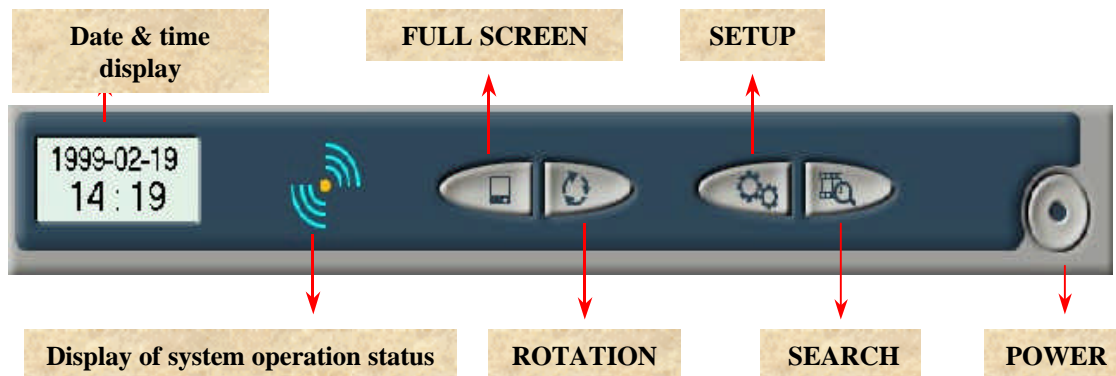
## 2-2 Recording Program Menu

### 2-2-1 Pan/Tilt Control Panel of Recording Program



1. Camera display window for PAN/TILT: Current camera is to be displayed.
2. PAN/TILT MODE ON/OFF : ON/OFF of control panel
3. PAN/TILT POWER ON/OFF : ON/OFF of power system of PAN/TILT
4. Direction control : Adjust camera up/down and right/left.
5. Selection of camera : Select a camera.
6. LEFT LIMIT : Move camera focus to left end.
7. RIGHT LIMIT : Move camera focus to right end.
8. ZOOM IN : Make camera focus run Zoom In.
9. ZOOM OUT : Make camera focus run Zoom Out.
10. TELE : Make camera focus become narrow.
11. WIDE : Make camera focus become wide.
12. AUTO FOCUS : Adjust camera focus automatically.
13. AUTO ROTATION : Rotate camera automatically.

## 2-2-2 Main Control Panel of Recording Program



1. Date and time display : Display current date and time.
2. FULL SCREEN : Hide Menu window, and switch monitoring screen to maximum image screen.
3. SETUP : Switch to Set Up mode to set system.
4. Display of system operation status: Movement of blue-colored waveform indicates “Under full recording”, while that of yellow-colored waveform does “Motion Perceive Recording”.
5. ROTATION : Display only one of selected camera on overall monitoring screen intensively.
6. SEARCH : Switch to Search mode to run recording screen search, backup, output and so on.
7. POWER : Push Power button to let Display Level reach 100%, and release the button to turn the system OFF.

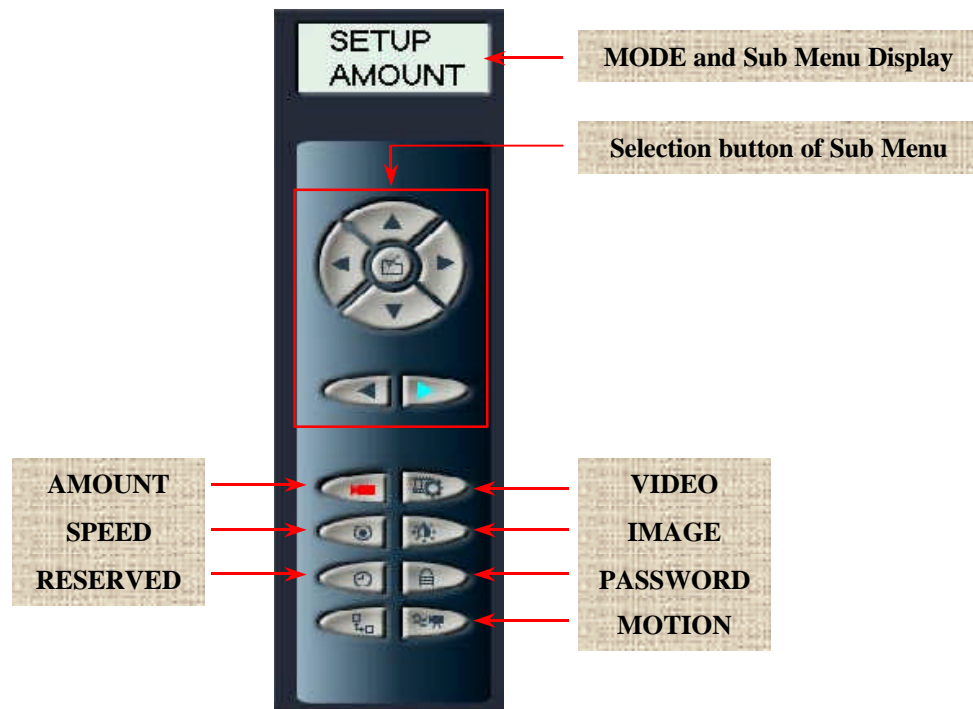
## 2-2-2 Major Screens of Recording Program



(Display not only name of camera but also movement sensing.)  
 Camera 3 indicates given name of camera by each location, while (M) does movement of each camera (Motion function).

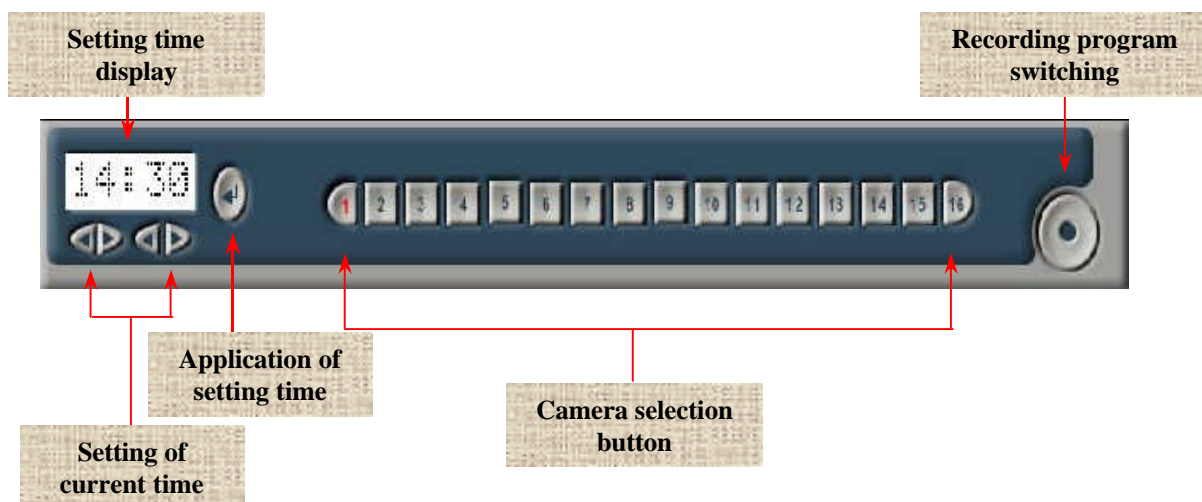
## 2-3 Control Program Menu

### 2-3-1 Control Panel of Control Program



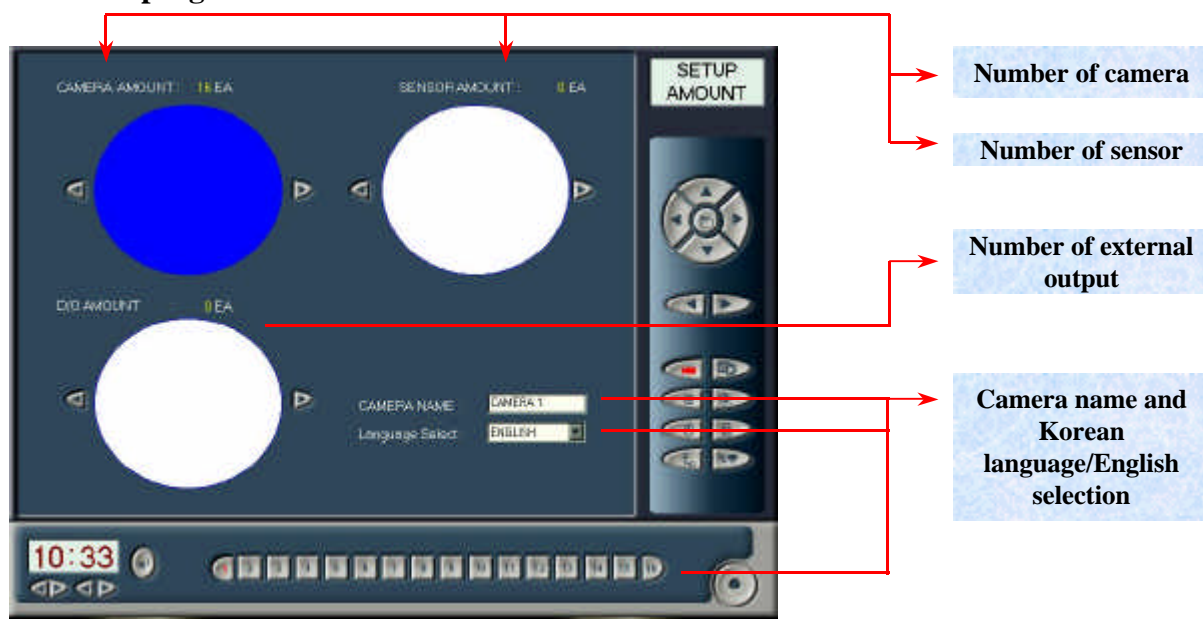
1. **MODE and Sub Menu Display** : Display not only current mode but also sub menu of selected setup.
2. **Selection button of sub menu**: The button selects sub menu in the below in sequence. It also selects sub menu directly.
3. **AMOUNT** : Switch to sub menu that can adjust number of camera, sensor and external output system.
4. **VIDEO** : Switch to sub menu that can select recording option of both image signal and video.
5. **SPEED** : Switch to sub menu that can adjust recording speed.
6. **IMAGE** : Switch to sub menu that can adjust contrast and brightness of output screen.
7. **RESERVED** : Switch to sub menu that reserves recording.
8. **PASSWORD** : Switch to sub menu that changes password of manager.
9. **MOTION** : Switch to sub menu that sets motion monitoring.





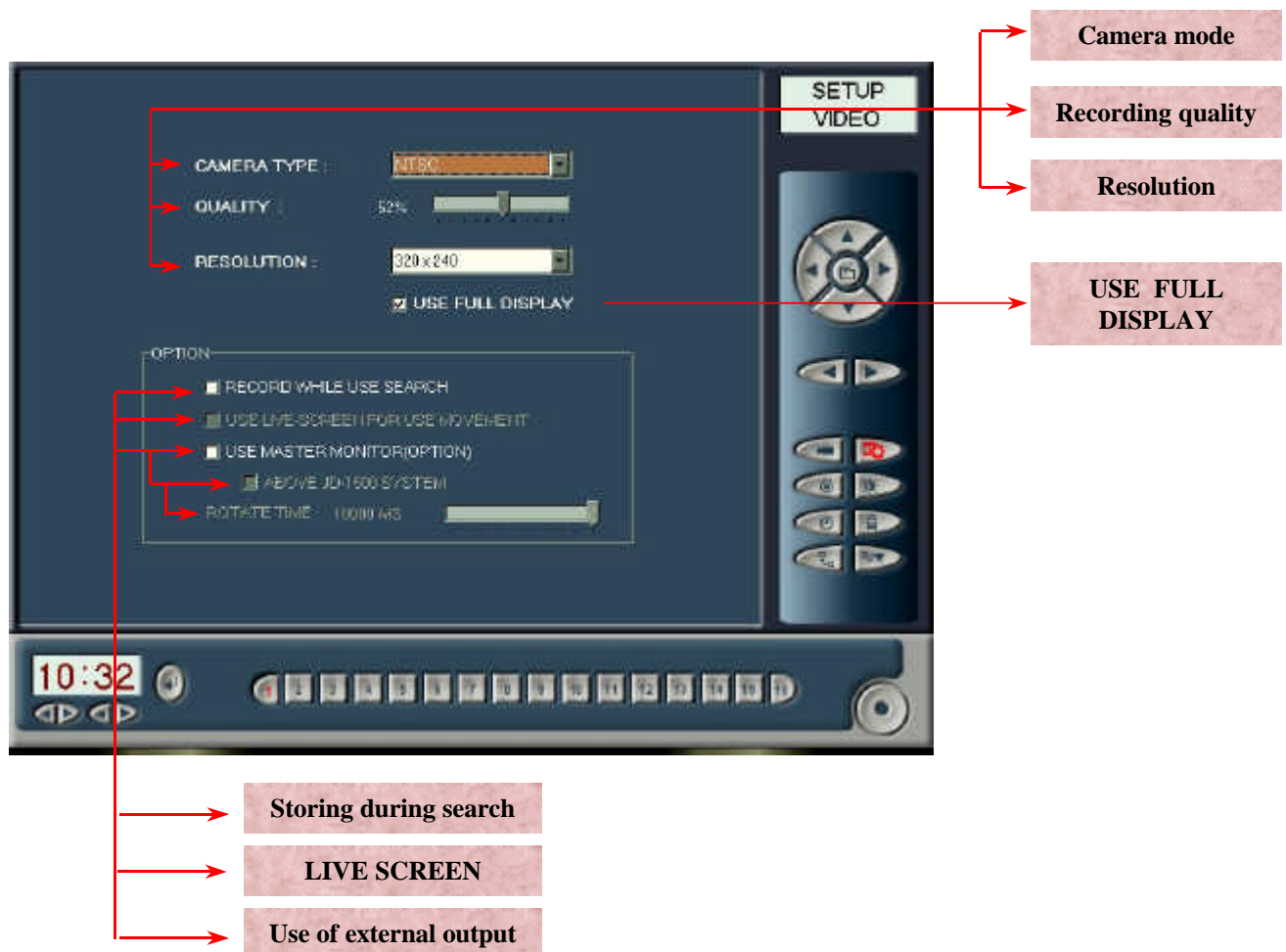
1. Setting time display : Display current setting time.
2. Current time setting : Change time at option, while running system.
3. Application of setting time : After finishing time setting, the set time is to be applied to system.
4. Recording program switching : Return to recording program.
5. Camera selection button : The button selects camera in the case of change of camera name, setting of images and motion, and other setting of each camera.

## 2-3-2 Control program - AMOUNT



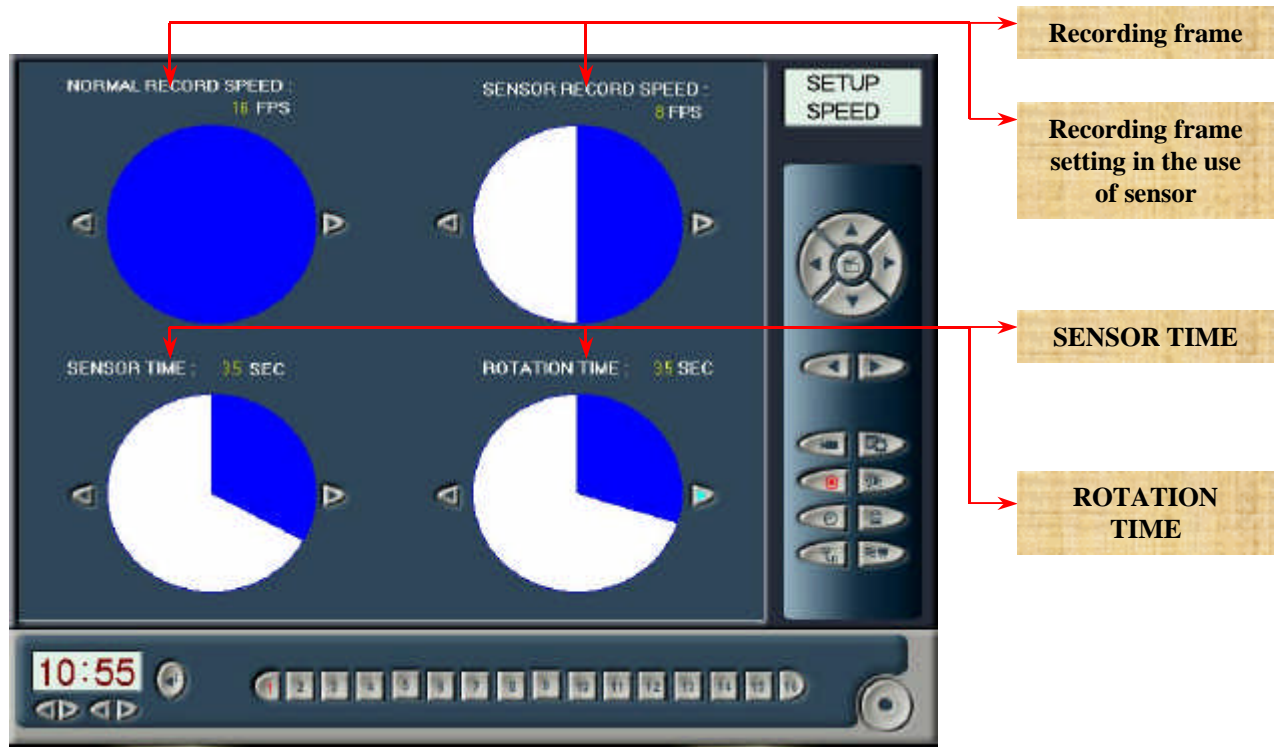
1. Number of camera : Set number of camera by using Right/Left arrow.
2. Number of sensor : Set number of sensor by using Right/Left arrow.
3. Number of external output system : Set number of external output system by using Right/Left arrow. Independent system is to be required to control power system of external system.
4. Name of camera : Click "Select" of camera at bottom to change name of installed camera, and then input data with keyboard (Both Korean language and English may be accepted.).

### 2-3-3 Control Program - VIDEO



1. Camera mode :Both NTSC and PAL are available. In Korea, NTSC has been adopted to set camera mode.
2. Recording quality : The better recording quality, the more storing capacity is needed.
3. Resolution : Currently, resolution mode adopts only 320\*240 mode.
4. USE FULL DISPLAY : Screen is to be displayed with maximum frame.
5. Storage option during search : Images of camera in operation are to be saved even during search to delay system operation speed rather slowly (Not recommending option).
6. LIVE SCREEN : Under operation of PAN/TILT, movement of selected camera is to be displayed in dynamic image. Warning!: You cannot run recording while selecting Live Screen mode and PAN/TILT. This mode is currently not to use.
7. Use of external output : Switch screens on Rotate Time mode sequentially, when you make use of independent A/V Monitor (TV).

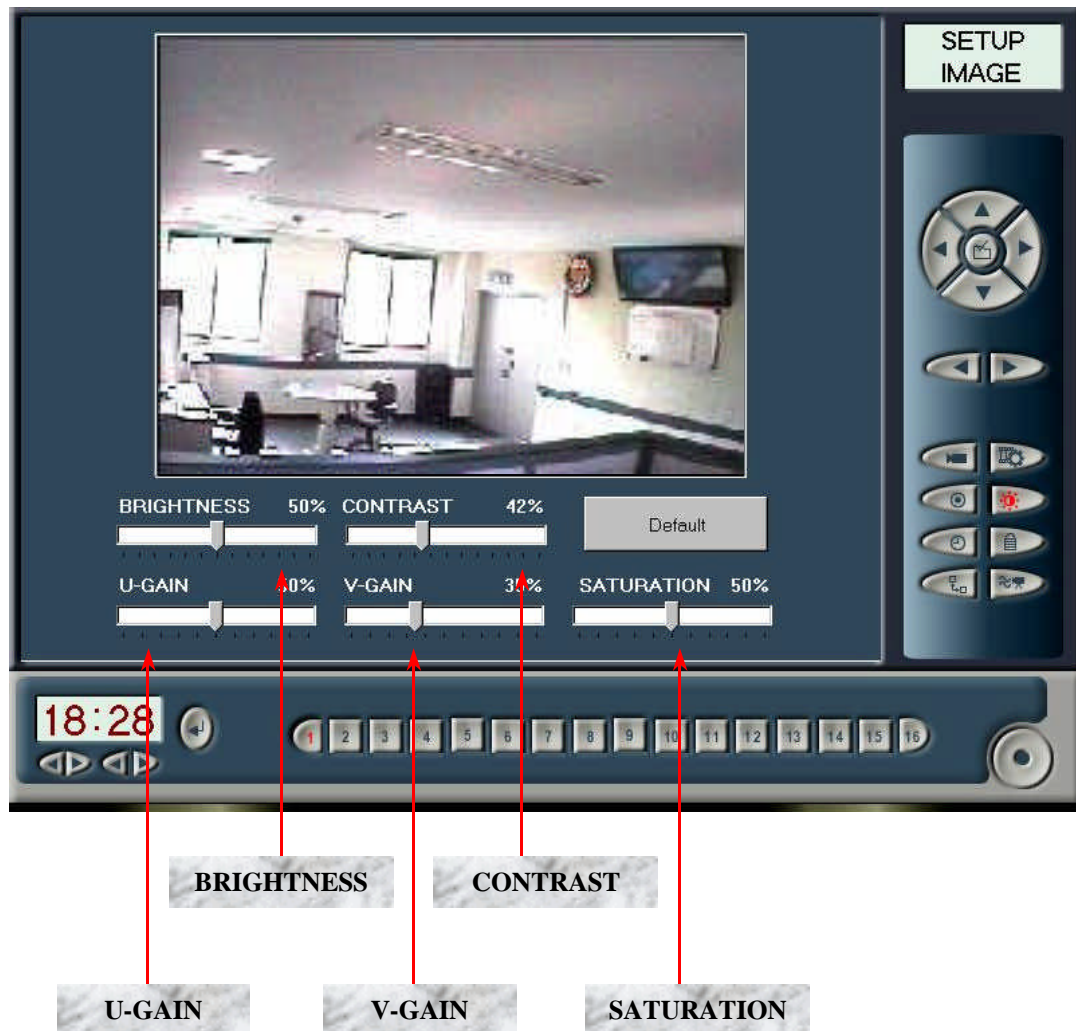
## 2-3-4 Control Program - SPEED



1. Recording frame : Adjust recording speed. ( 1-40 FRAME/SEC )
2. Recording frame setting in the use of sensor : Independent sensor of the system can adjust recording speed by using the sensor. ( 1-40 FRAME/SEC )
3. SENSOR TIME : Sensor can record more images as much as setting time after running the sensor.
4. ROTATION TIME : When you want to monitor from monitor of main body not by divided screens, by auto selector, you may set time interval for screen switching.

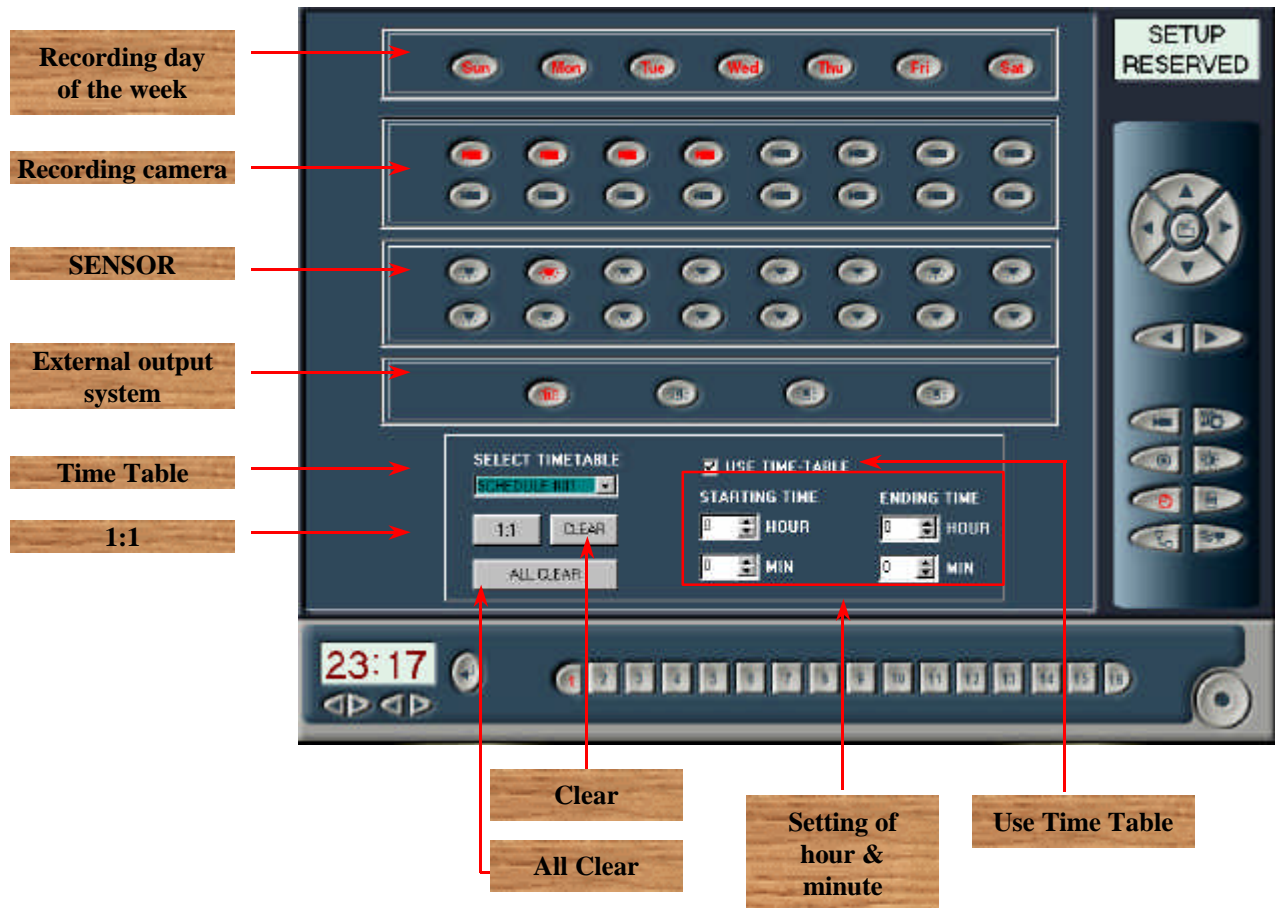


## 2-3-5 Control Program - IMAGE



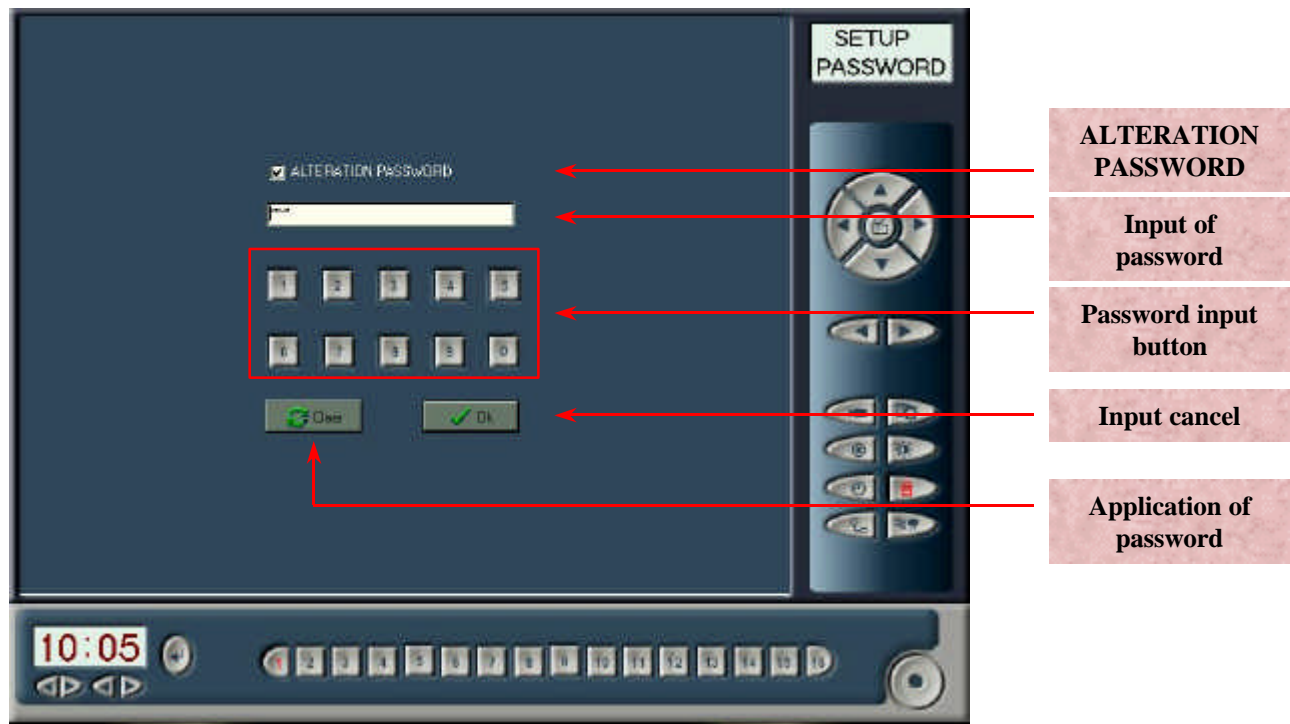
1. BRIGHTNESS : Set monitor mode as well as brightness of recording images.
2. CONTRAST : Set monitor mode as well as contact of recording images.
3. U-GAIN : Select red color of 3 primary colors.
4. V-GAIN : Select green color of 3 primary colors.
5. SATURATION : Select blue color of 3 primary colors.

## 2-3-6 Control Program - RESERVED



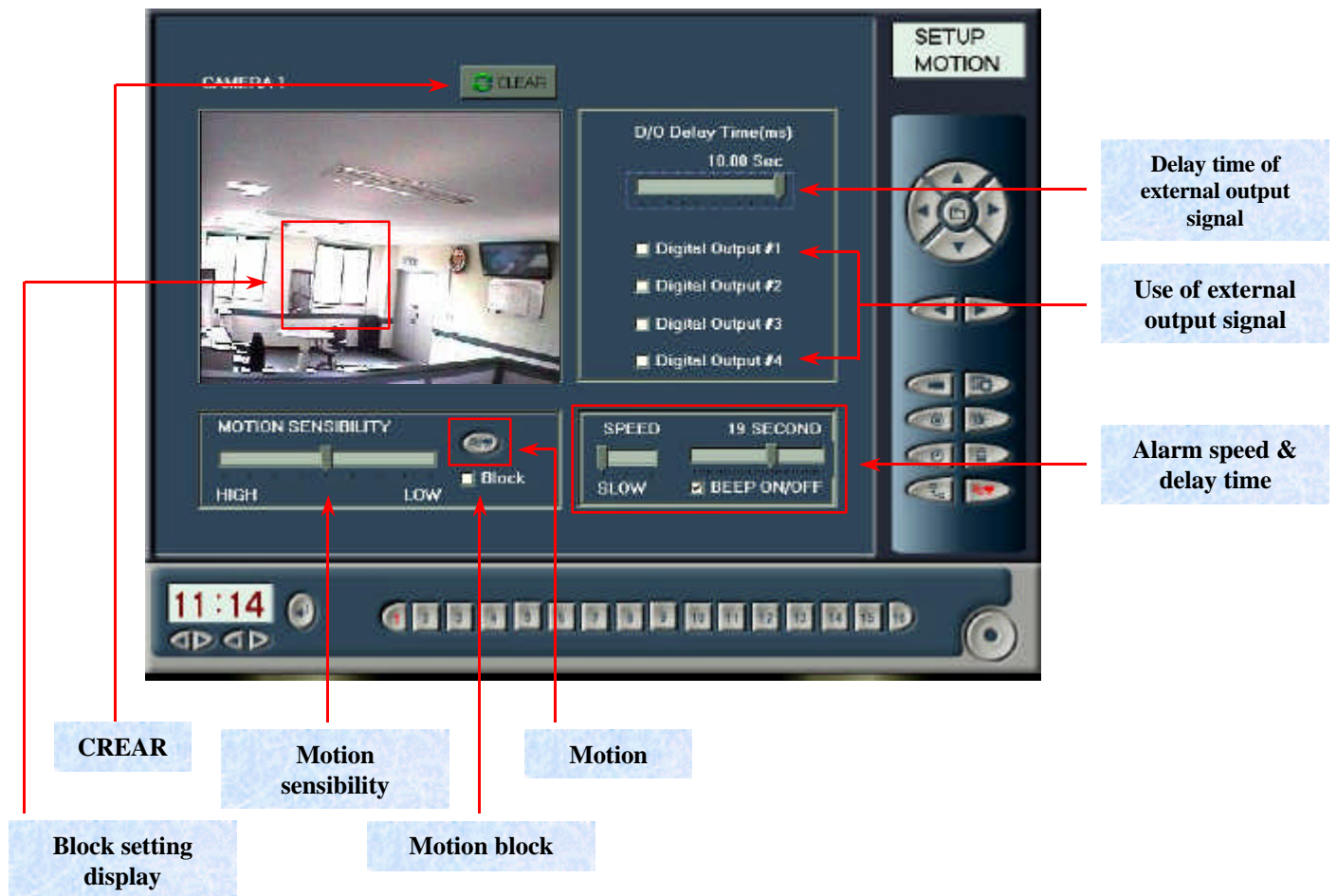
1. Recording day of the week : Select recording day of the week.
2. Recording camera : Select recording camera among installed cameras.
3. SENSOR : Select sensor for operation among installed sensors.
4. External output system : Select a system for operation among installed external output systems.
5. Time Table : Select reserved recording schedule, which you want.
6. 1:1 : Reserve each one set of camera and sensor to one to one of ratio among 16kinds of schedules.
7. CLEAR : Initialize status of reservation.
8. Setting of time and minute : Set both start time and finish time of reserved recording.
9. Use Time Table : Check use of reservation recording mode. When Use Time Table is not selected, you can do monitoring by only screen, but cannot save images.
10. Use Time-table select using time table or not(If not selected,display on screen only,does not recording

### 2-3-7 Control Program - Password



1. ALTERATION PASSWORD : Check use of password.
2. Input of password : Display input password in type of box.  
(Input password is to be displayed in symbol of \*.)
3. Input button of password : The button can input a password. Note: Keyboard cannot input a password.
4. Input cancel : Resave original status by clicking Input Cancel.
5. Application of password : Apply input password to your computer.

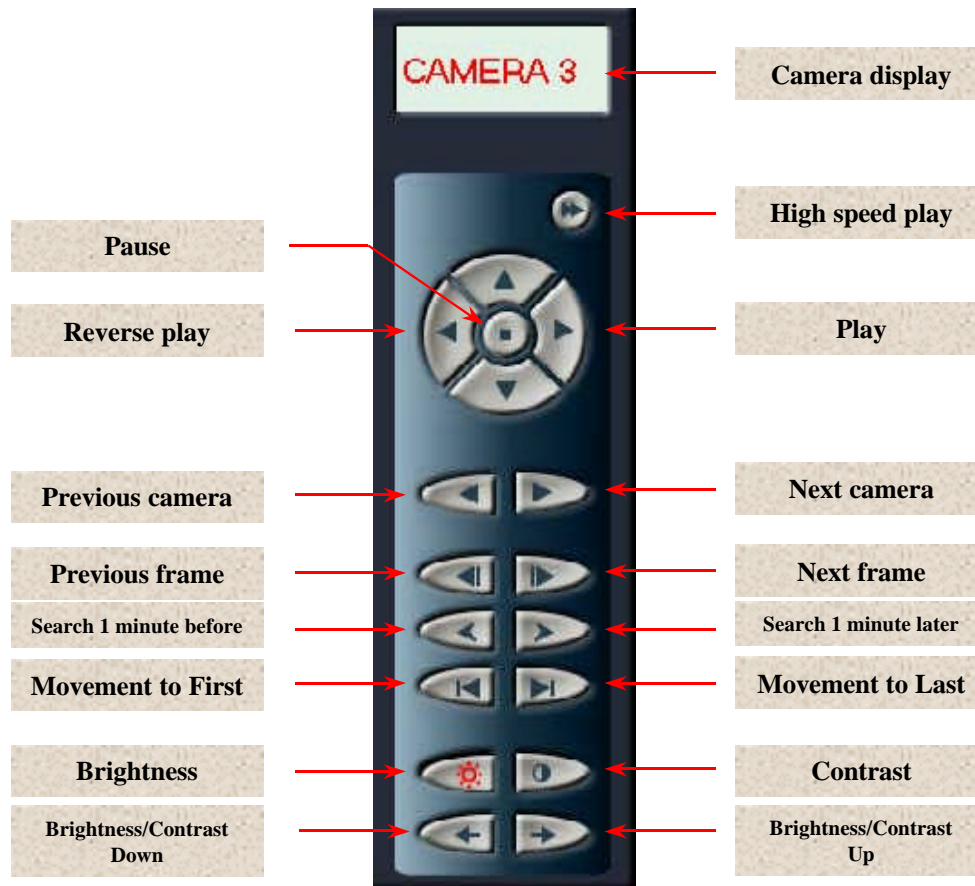
## 2-3-8 Control Program - MOTION



1. Block setting display : Select a camera by using camera selection button at bottom. Then, place mouse pointer at the place requiring intensive monitoring, and then click left-hand button of mouse. Click right-hand button of mouse to release partially.
2. CLEAR : Initialize block.
3. Motion : Select Use of Motion. Select this mode to monitor all of screens.
4. Motion block : Select of Use of Motion Block. Select this mode to set partial block. Otherwise, do not select this mode to monitor all of screens.
5. Motion sensibility : Select degree of motion sensibility.
6. Delay time of external output signal : Select delay time of signal of external output system.
7. Use of external output signal : Select Use of signal of external output system.
8. Alarm speed and delay time : Select Use of alarm, and speed and time of alarm when monitoring motion.

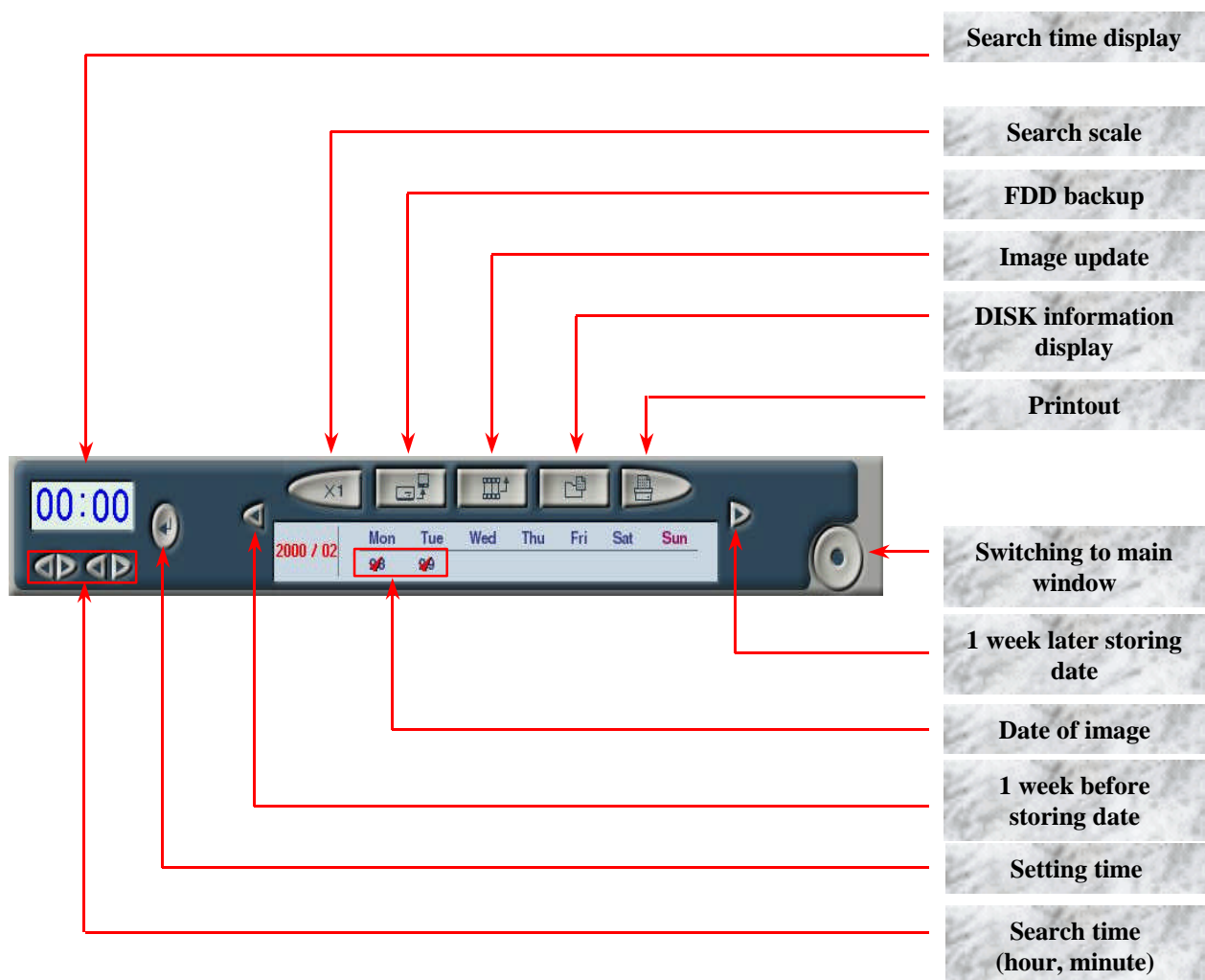
## 2-4 Search Program Menu

### 2-4-1 Control Panel of Search Program



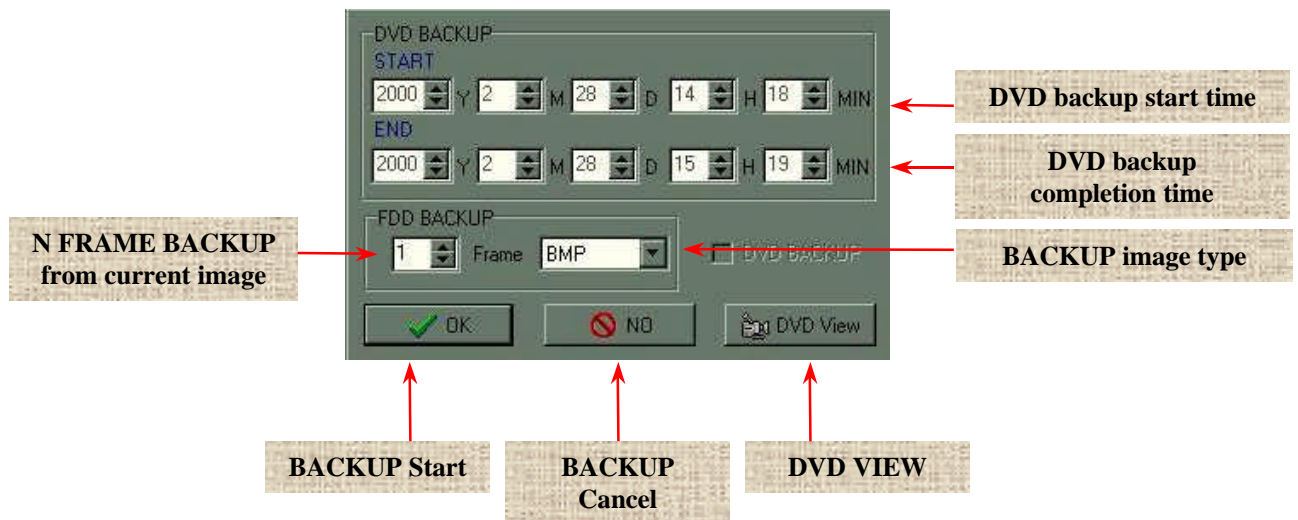
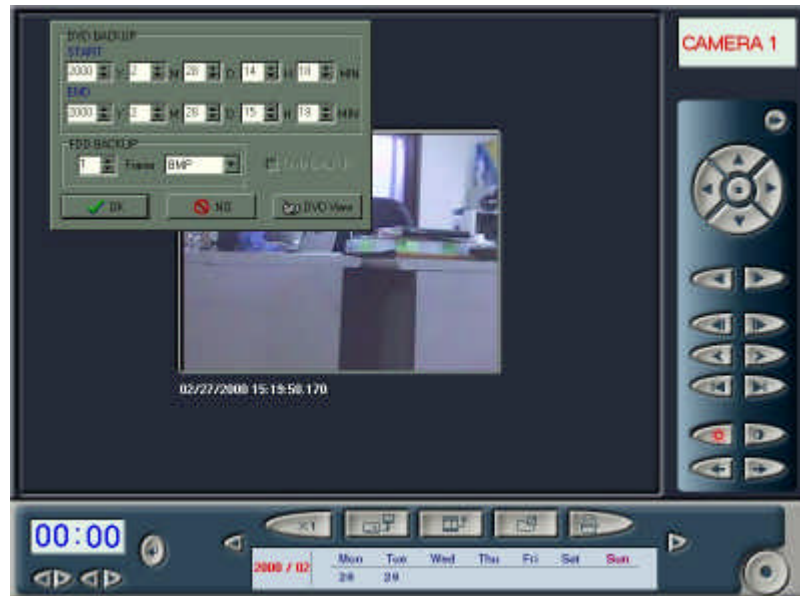
1. Camera display : Name of camera that currently researches
2. High speed play : Play images in high speed.
3. Play : Play images.
4. Reverse play : Play images in reverse direction.
5. Pause : Pause movement of images while playing.
6. Previous camera : A camera before currently selected one.
7. Next camera : A camera next to currently selected one.
8. Previous frame : Search of images 1 frame ahead
9. Next frame : Search of 1 frame behind.
10. 1 minute before search : Search 1 minute before image.
11. 1 minute after search : Search 1 minute after image.
12. Movement to First : Move to first image
13. Movement to Last : Move to last image.
14. Brightness : Adjust brightness of image.
15. Contrast : Adjust contrast of image.
16. Brightness/Contrast Down : Decrease brightness and contrast.
17. Brightness/Contrast Up : Increase brightness and contrast.





1. Search time display : Current research time of image is to be displayed.
2. Search time (hour, minute) : Search time in hour and/or minute is to be displayed.
3. Input of setting time : Input time is to be displayed.
4. Search scale : Adjust scale of image to search (maximum: 3 times).
5. FDD backup : Save currently searching images in a diskette.
6. Image update : Update images saved during search.
7. DISK information display : Display current capacity of hard disk.
8. Printout : Printout images with printer.
9. 1 week before storing date : Search an image that was saved 1 week before.
10. 1 week later storing date : Search an image that is saved 1 week later.
11. Date of image : Display date when an image exists.
12. Switching to main window : Switch an image to main window.

## 2-4-2 Search Program - BACKUP



1. DVD backup start time : Input start time of an image that is to be saved in DVD Disk.
2. DVD backup completion time : Input completion time of an image that is to be saved in DVD Disk.

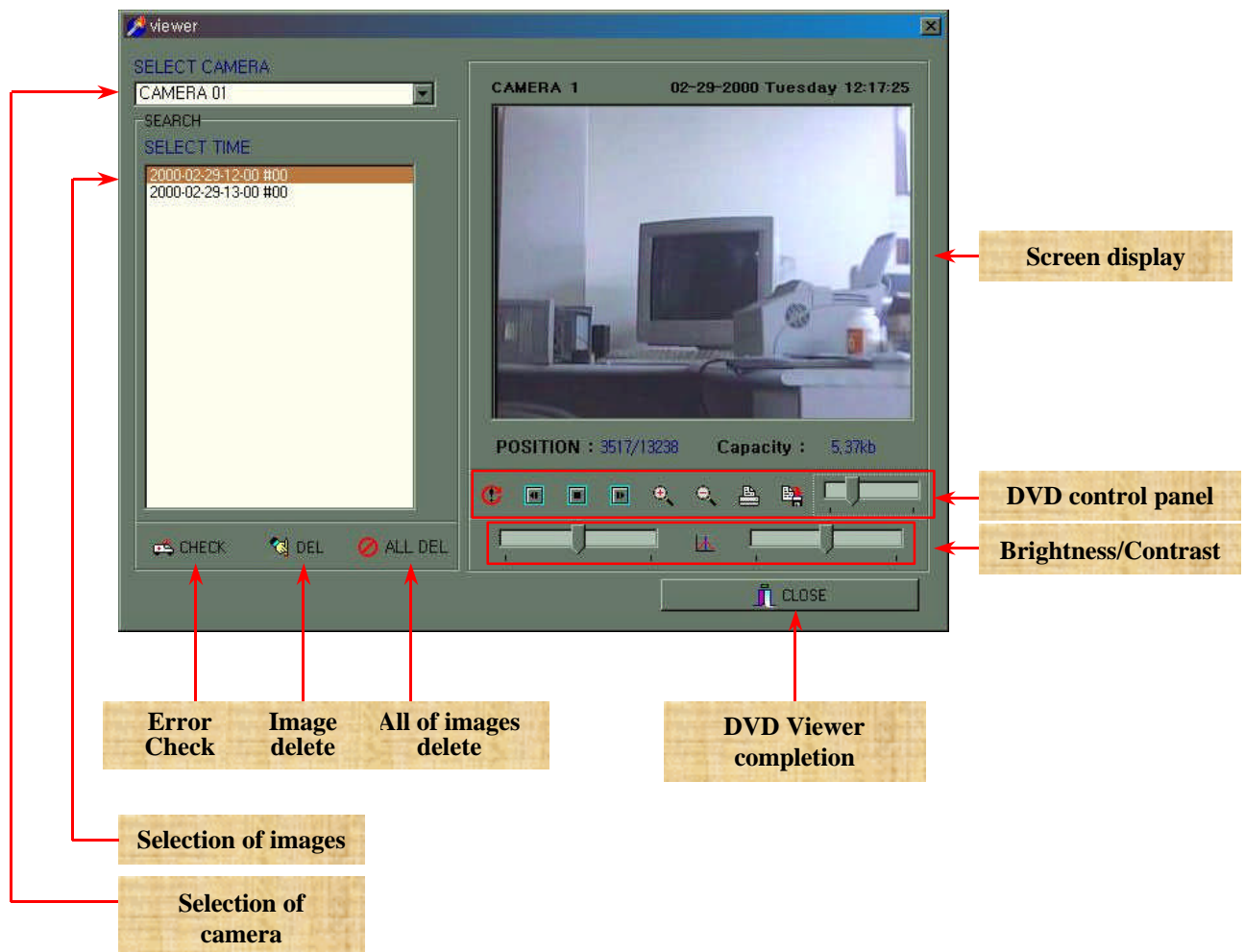
3. FRAME BACKUP from current image : save necessary frame in floppy disk from currently searching images.

4. BACKUP image type : Display image type, for example, BMP and JPG, to be saved.

5. BACKUP start : Start backup.

6. BACKUP cancel : Cancel backup and return to search program.

7. DVD VIEW : Search or delete images saved in DVD DISK.



7-1. ERROR CHECK : Inspect files saved in DVD Disk.










7-2. Image delete : Delete an image that is selected at search box.



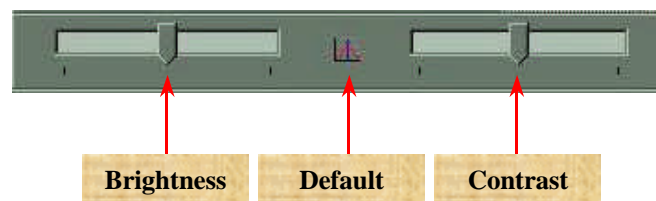
7-3. All of images delete : Delete all of images that are saved at search box.

7-4. Screen display : Search an image that is selected at search box.

7-5. DVD control panel : Play, delete, output and save images.

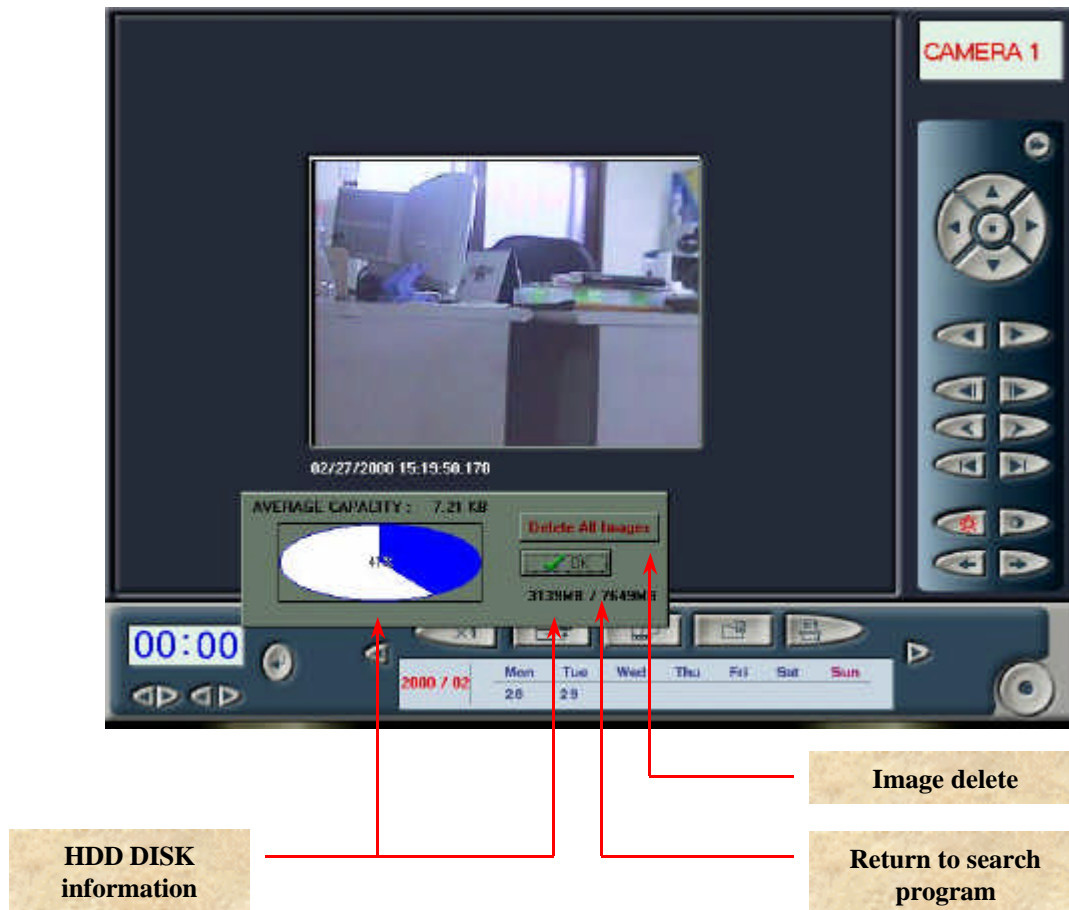
- A.  REFRESH : Lists of up-to-date images
- B.  BACK : Move to 1 Frame previous image.
- C.  PLAY / BACK PLAY : Play images, or play in reverse direction from end of images.
- D.  FORWARD : Move to 1 Frame behind image.
- E.  ZOOM IN : Expand size of current image.
- F.  ORIGINAL : Reduce size of image to that of before Zoom In.
- G.  PRINT : Printout current image with printer.
- H.  SAVE AS : Save current image in other file name.
- I.  Play Scroll : Play images by using Scroll Bar.

7-6. Brightness / Contrast : Adjust brightness and/or contrast of current image.



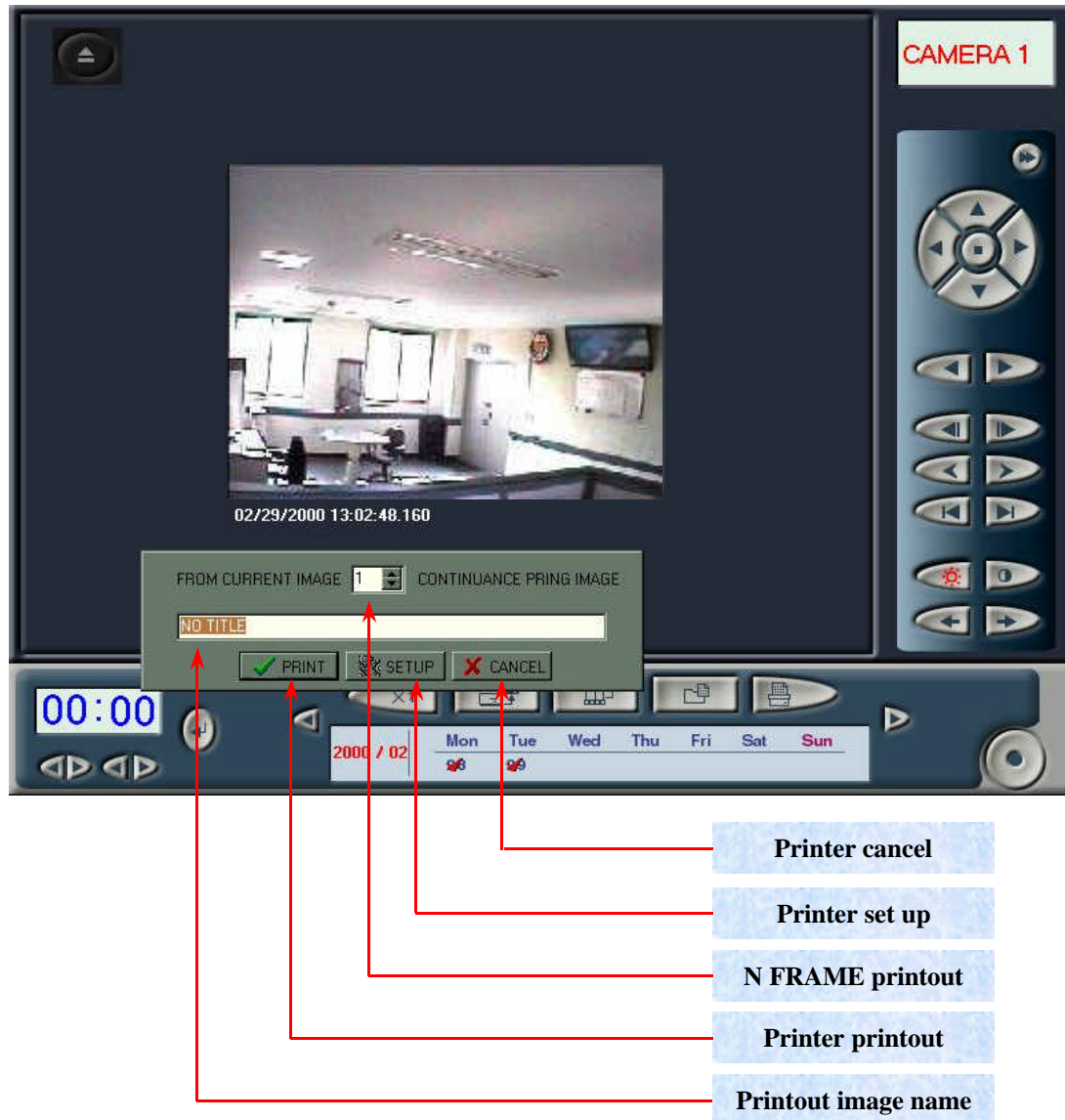
8. DVD Viewer Completion : Complete DVD search, and switch to search program.

### 2-4-3 Search Program - DISK INFO



1. HDD DISK information : Display information on hard disk to show total capacity as well as current occupancy by figure and graphs.
2. Image delete : Delete all of saved images.
3. Return to search program : Close hard disk information window, and return to search program.

## 2-4-4 Search Program - PRINT



1. Printout image name : Nominate name of printout image.
2. N FRAME printout : Input number of frame to printout from current image.
3. Printer printout : Printout images with printer.
4. Printer set up : Switch to printer set up window to printout details of printer of current system.
5. Printer cancel : Cancel printing and return to search program.

## 2-5 JD-1540 System Functions

### 2-5-1 Recording program

#### 1. Common mode



Save images in recording program screen.


#### 2. Auto switch mode



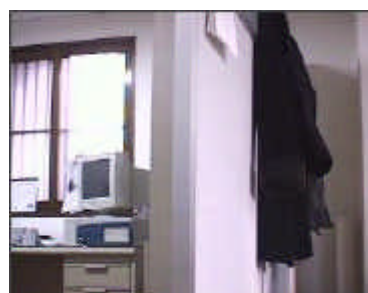
Click left-hand button of mouse to switch four cameras to overall screen and show images. You can set the switching time by using speed set up of control program.

#### 3. Overall screen mode



Click  button to switch to overall screen mode. On the other hand, click right-hand button to return to Common Mode.


#### 4. Overall screen auto switch mode



Click left-hand button of mouse at overall screen mode to switch to overall screen auto switch mode. On the other hand, click right-hand button to return to Common Mode.

### 5. Monitoring screen mode



Click  button to switch to Monitoring Screen mode to fix Auto Switch mode at a specific screen.

### 6. Overall screen monitoring mode

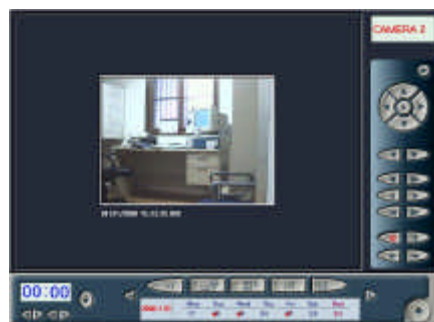


Click right-hand button of mouse at Monitoring Screen mode to switch to Overall Screen Monitoring mode. On the other hand, click right-hand button to switch to Monitoring Screen mode.

### 7. Switch to control and search program at main window



Click  button to switch from Recording Program to Control Program.



Click  button to switch from Recording Program to Search Program.

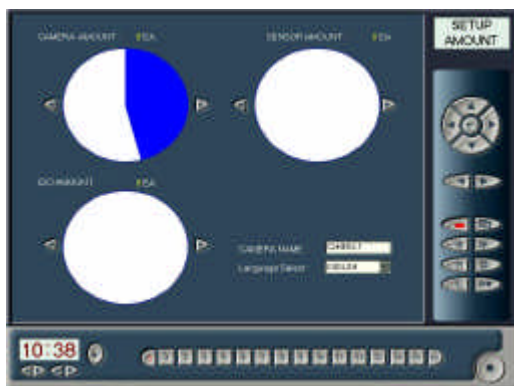


## 2-5-2 Control Program Functions

### 1. Selection of number of cameras

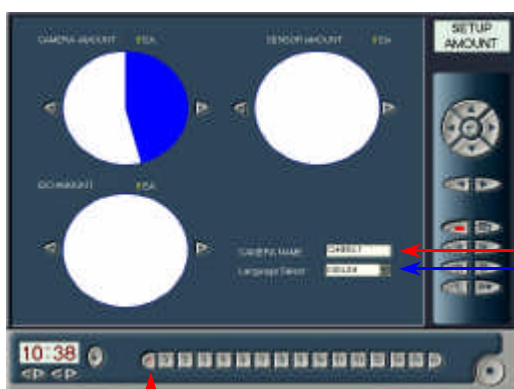


4 units of cameras are set at Control Program to display Recording Program saving screen.



8 units of cameras are set at Control Program to display Recording Program saving screen.

### 2. Change of camera name and languages



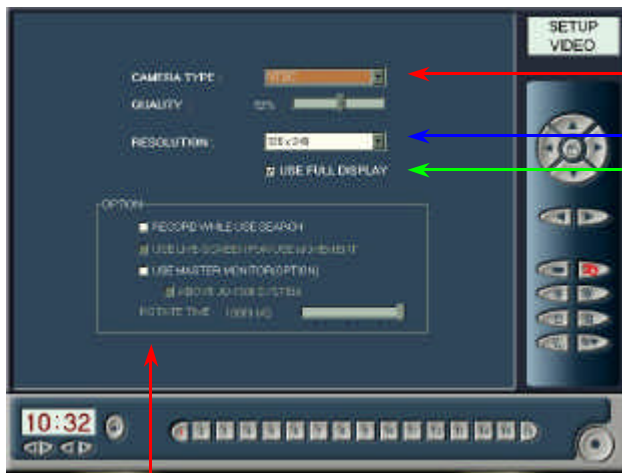
#### 1. Change of Camera Name

Select a camera to change, and input its name in camera name input box.

#### 2. Change of languages

You can select either Korean language or English at Language Selection box.

### 3. Recording and Resolution



Either NTSC or PAL may be used to select camera mode (In Korea, NTSC has been adopted.)

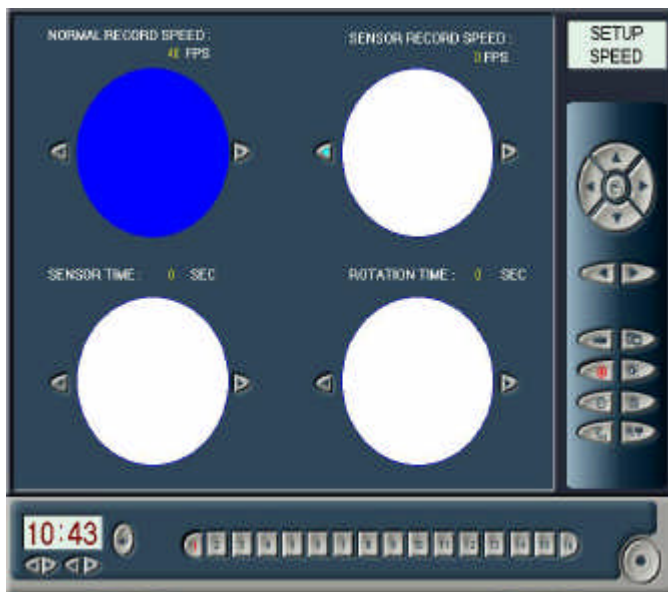
Select resolution (Currently, 320\*240 mode has been fixed.)

Image has been displayed with maximum output frame.

#### - OPTION -

1. Click this option to save images of monitoring camera, even if you search other images at Search window. Searching may delay operation speed of your system (This option is not recommended.)
2. While you adjust a camera with PAN/TILT, you may watch dynamic image (When you make use of PAN/TILT after selecting this option, you cannot do recording. Currently, this option is not being used.)
3. This option is used for external A/V monitor. (When you make use of an independent A/V monitor, you may set sequential switching time on screen.)

### 4. Recording Speed and Sequential Switching Time



#### 1. Normal Record Speed

You can record up to 40 Frame per second.  
(Set up Frame / number of set up camera = number of saved frame per camera)

#### 2. Sensor Record Speed

You can adjust recording speed for saving when sensor operates.

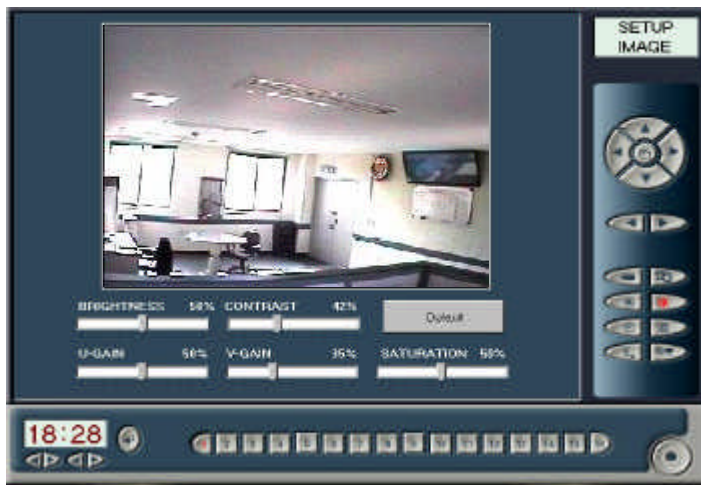
#### 3. Sensor Time

You can do recording more as much as Sensor Time, after sensor operates.

#### 4. Rotation Time

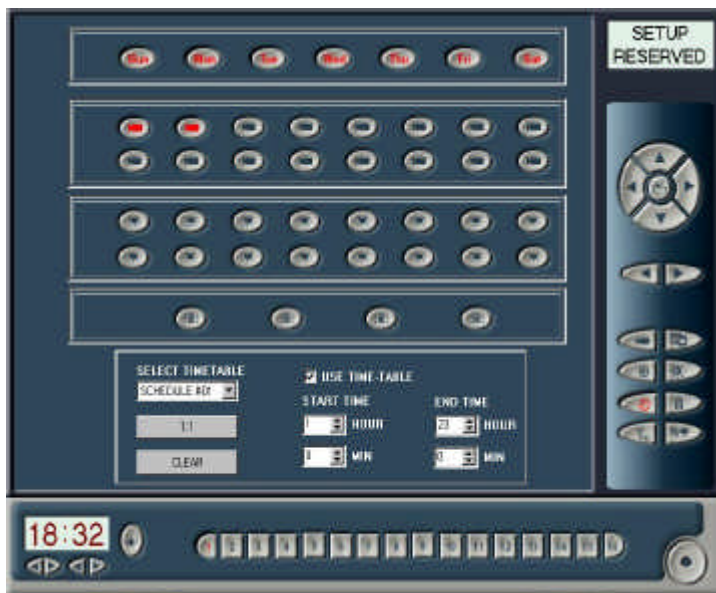
You can set switching time of camera at camera sequential switching monitoring mode.

## 5. Brightness and Contrast of Monitoring Screen



1. BRIGHTNESS : Track Bar for **brightness control** (initial value : 50%, Max. : 80%, Min. : 20%)
2. CONTRAST : Track Bar for **contrast control** (initial value: 42%, Max.: 80%, Min.: 20%)
3. U-GAIN : Track Bar for **red-color control** (initial value: 50%, Max.: 100%, Min.: 0%)
4. V-GAIN : Track Bar for **green-color control** (initial value: 50%, Max.: 100%, Min.: 0%)
5. SATURATION : Track Bar for **blue-color control** (initial value: 50%, Max.: 100%, Min.: 0%)

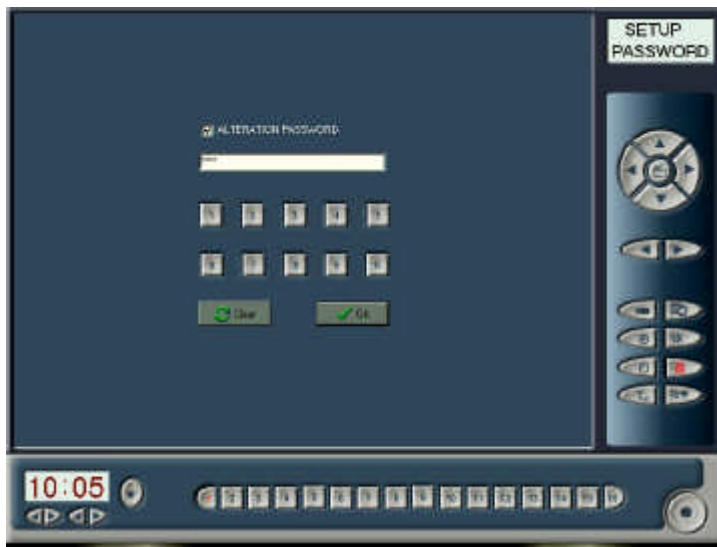
## 6. Recording Reservation



1. You can reserve recording by each day of the week, for example, Monday to Sunday.
2. You can reserve recording of No. 1~16 of camera.
3. You may set use of No. 1~16 sensor.
4. You may set use of external output system.
5. You may make use of No. 1~16 of reservation schedule by Select Time Table.
6. You may make use of No. 1~16 of reservation schedule of both camera and sensor by using 1:1 mode.
7. You may initialize reserved schedule by using Clear mode.



## 7. Password

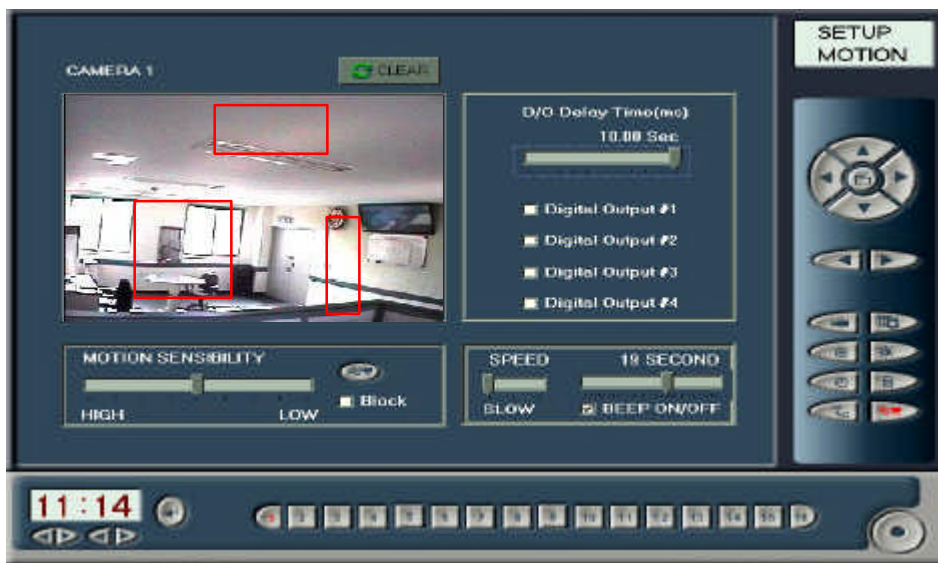


### Input of Password

Click 'ALTERATION PASSWORD' to let button become active to input password. Click the button to input password. Then, click 'OK' to display a question message on saving of the password. Click 'Yes' to save the password. Otherwise, click 'Clear' to cancel input of the password.

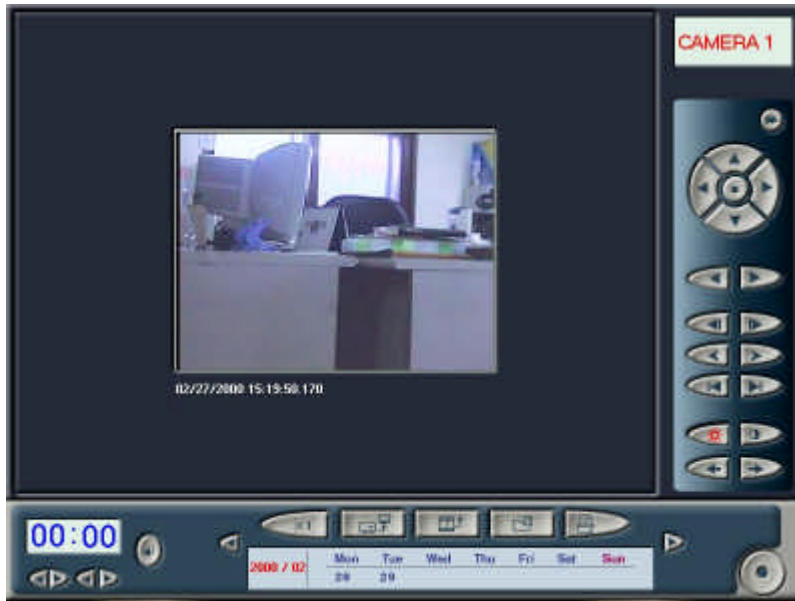
[However, this mode shall be applied to only Control Program-Set Up.]

## 8. Motion sensibility and Scope Set Up




1. MOTION SENSIBILITY : You can adjust sensibility of motion. High sensibility can check even minor movement to send alarm and/or signal to external output system. Click Block Box to perceive area that you want. You can select Block at several areas. If no Block is selected, you may monitor overall screen.  
(Motion Sensibility operates only when sensor shaped button turn red-colored lamp ON.)
2. D/O Delay Time : You may set Delay Time to delay signal to external output system, and select external output system to send a signal.
3. BEEP ON / OFF : Under Motion Sensibility mode, you may set alarm speed and delay time by using Use of Alarm.


### 2-5-3 Search Program Functions



#### 1. Enlargement of Search Image

Click  button to enlarge images in search 2 to 3 times at Search Program.


#### 2. Backup

Click  button to let Backup window become active. Select number of frame as well as type of image to save, and then put empty diskette into “A” drive and click ‘OK’ to save. On the other hand, click ‘NO’ to cancel and make Backup window disappear.


#### 3. Update

Click  button to update additionally saved images.

#### 4. Hard Disk Information and Image Delete

Click  button to let Disk Information (DISK INFO. ) window become active. Blue-colored gauge identifies current capacity in use, while white-colored gauge does remaining capacity. Click ‘[DELETE ALL IMAGE](#)’ to delete all of saved images of hard disk completely. On the other hand, click ‘OK’ to let DISK INFO. window disappear.

#### 5. Printer Printout

Click  button to let Printer Printout window become active. Select number of frame to printout, and click ‘PRINT’ to run printout function after filling out name of images at title box. On the other hand, click ‘CANCEL’ to let Printer Printout window disappear.

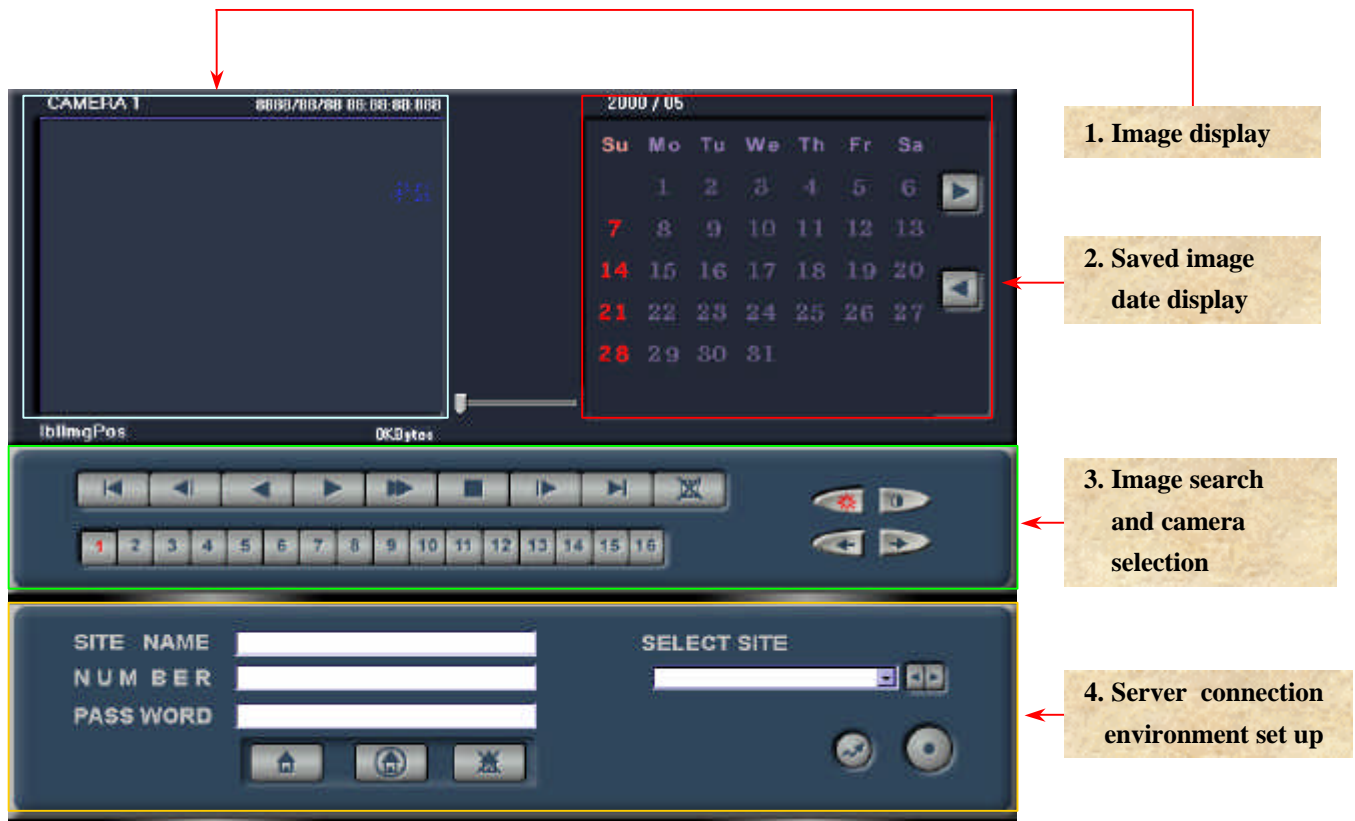
You may make correction of detailed information on printer in use by using ‘SETUP’ button. (For more information, refer to manual of printer manufacturer.)

## Chapter 3

### JD-2000 LAN/MODEM System Operation

\* Some functions can not be operated with modem.

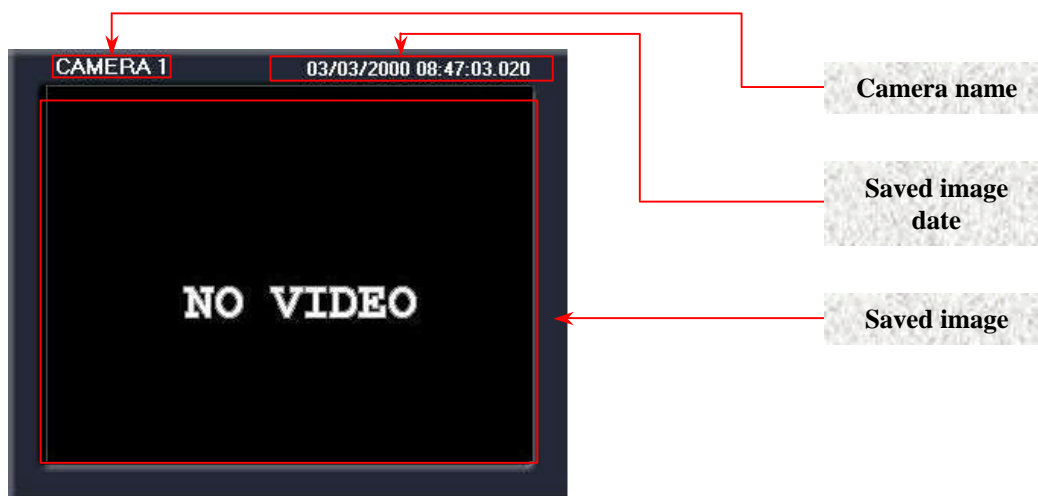
#### 3-1 Client Images Inquiry



Client Images Inquiry program allows you to inquire images in the past, which were transmitted under OFF-Line without being connected with server.

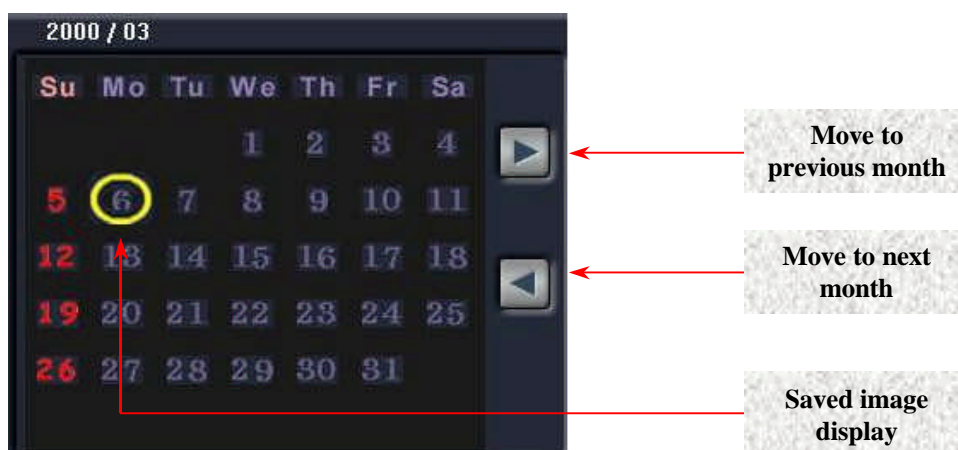
1. Image display : Display images of selected camera.
2. Saved image date display : Display circle mark at saved date when selected camera saves image.
3. Image search and camera selection : Select camera for image search by using main control panel. You may play or delete images of selected camera.
4. Server connection environment set up : You may input server name, IP and telephone number to connect with server system.

### 3-1-1. Image Display



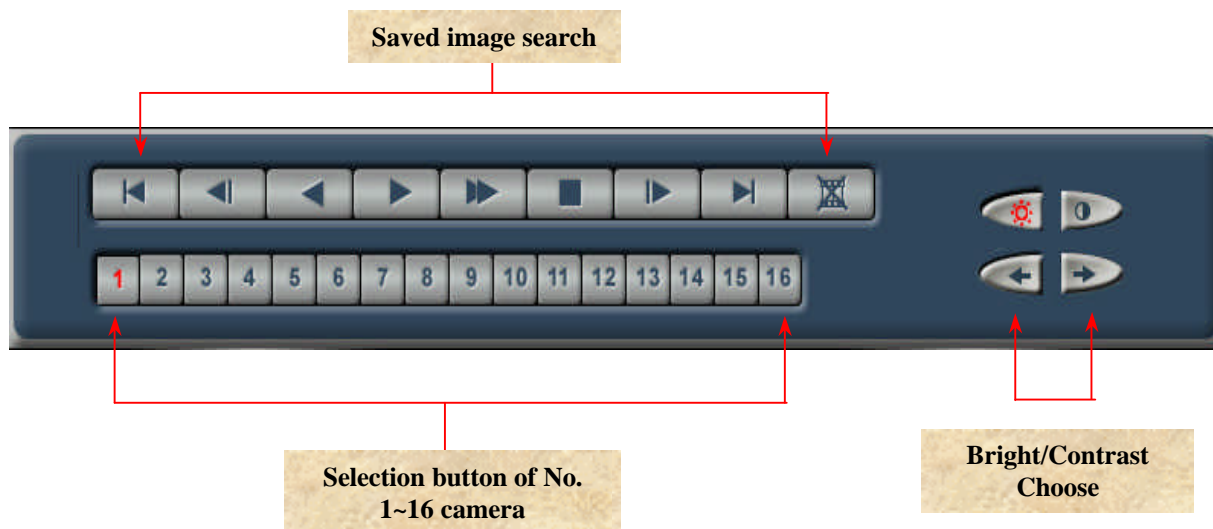
1. Camera name : Display name of a selected camera..
2. Saved image date : Display save date of image.
3. Saved image : Display saved image.

### 3-1-2. Saved image date display



1. Move to previous month : Move to the month before current search month.
2. Move to next month : Move to the month after current search month.
3. Saved image display : The date saved with an image is to be identified with red-colored circle.

### 3-1-3. Image Search and Camera Selection



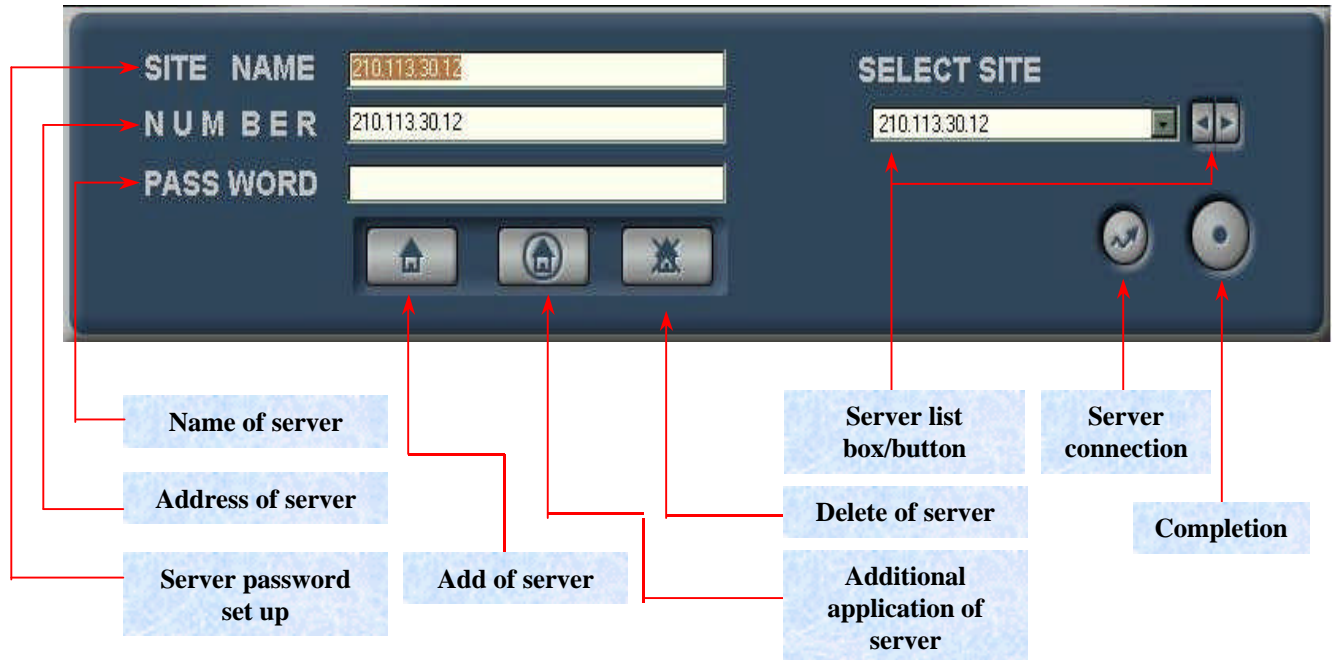
#### 1. Saved Image Search

- A. : Move to initial screen of saved image.
- B. : Move to 1 minute prior screen before image in search.
- C. : Move to previous screen before search
- D. : Play saved image.
- F. : Suspend an image under play.
- G. : Move to a screen following image in search.
- H. : Move to a screen 1 minute after image in search.
- I. : Move to last screen of saved image.
- J. : Delete images in search.

2. Camera selection : Select a camera to search among No. 1~16 camera.

3. Select Bright/Contrast: Choose Bright and Contrast of Images.

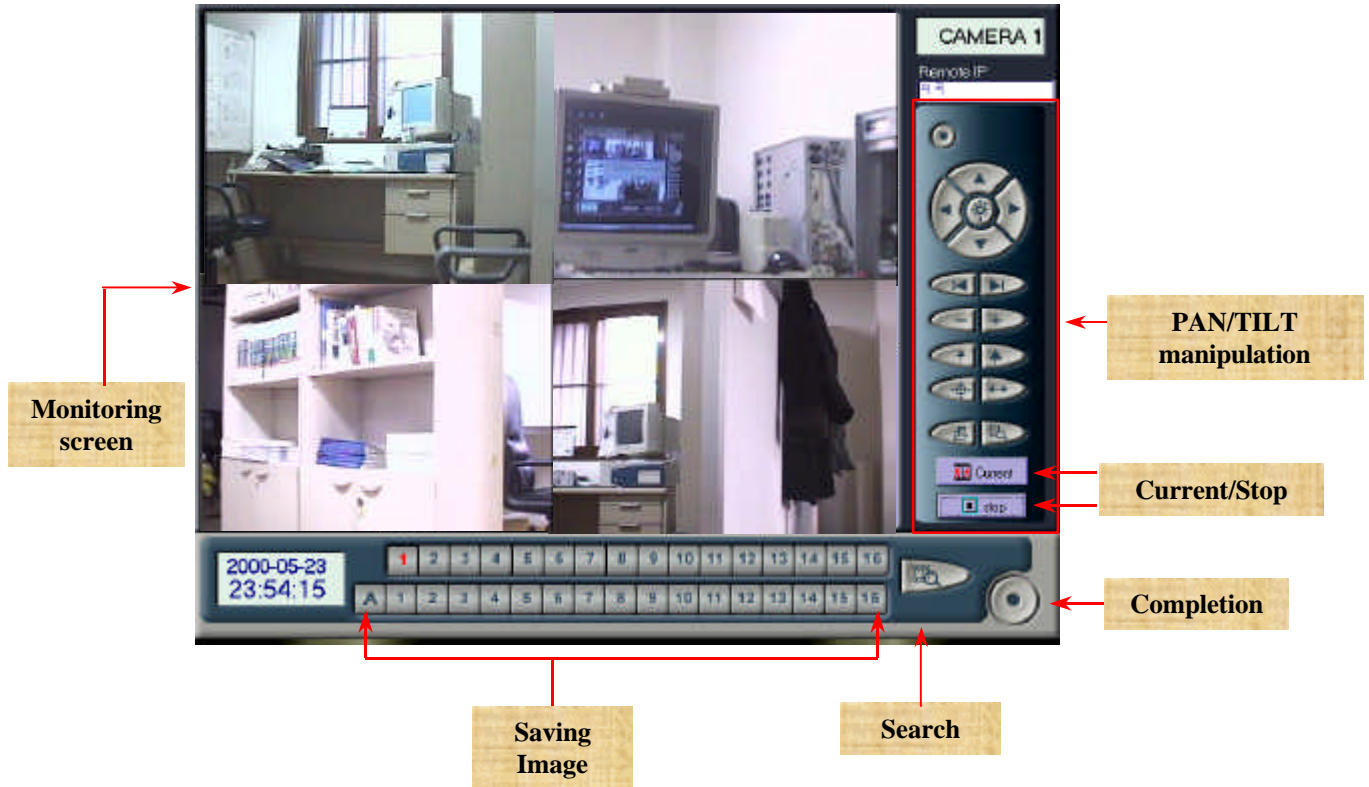
### 3-1-4. Server Connection Environment Set Up



1. Name of server : Select server to connect server list box to display name of server. Click Server Add button and input name of server to connect additionally.
2. Address of server : Select a server to connect at server list box, and let server IP address make appearance. Click Server Add button to input IP address and telephone number to connect with new server.
3. Server password set up : Set password of server to connect.
4. Add of server : Register new server additionally.
5. Additional application of server : Apply input contents with Add of Server button.
6. Delete of server : Delete unnecessary lists among the ones connected to server list box.
7. Server list box : Register lists of server. Click the box with mouse, or select lists of server for connection with button.
8. Server connection : After selecting a server to connect, click the button to connect with server.
9. Completion : Complete the program.



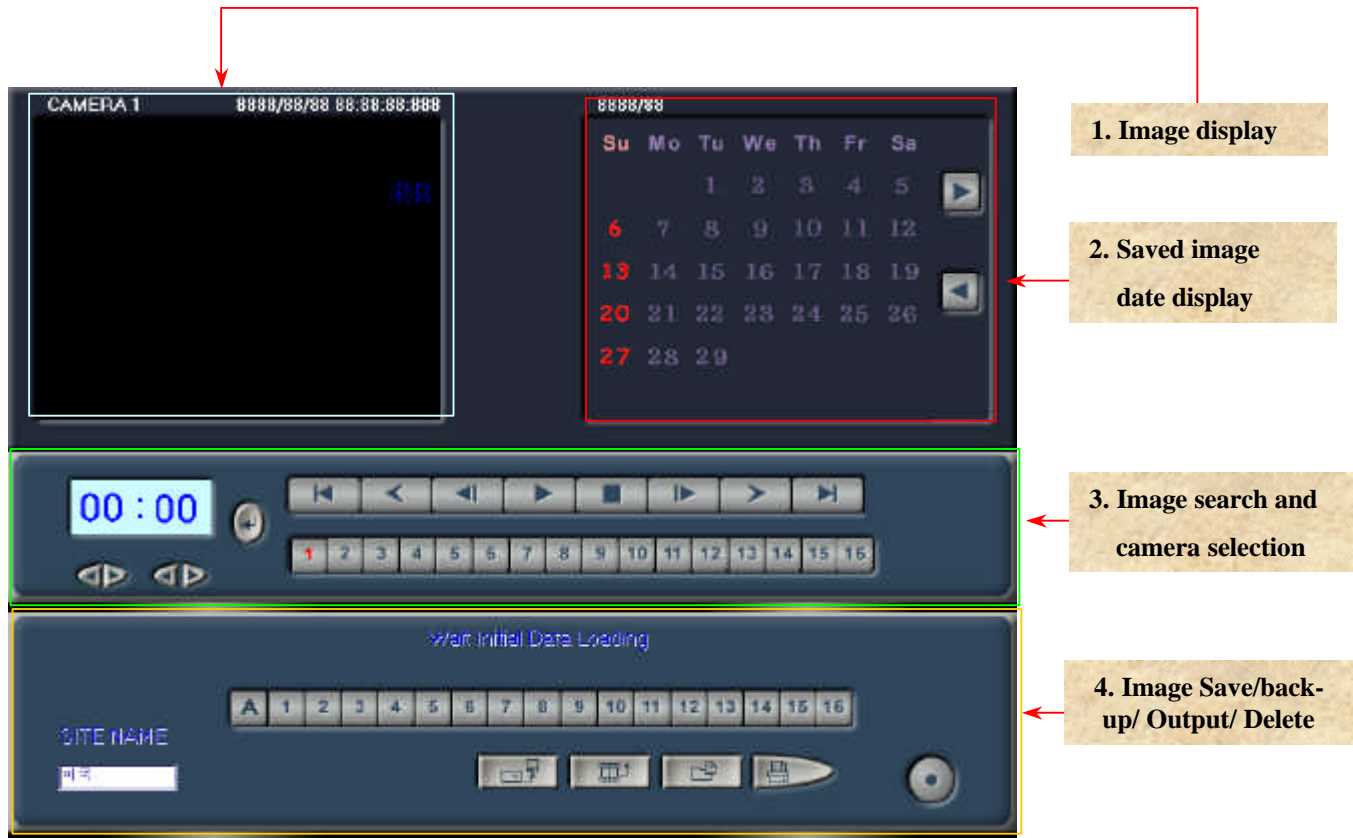
## 3-2 Server Monitoring



Server Monitoring program allows you to connect with server by using either LAN or WAN at clients to monitor current images in real time. You can save monitored images in client PC automatically.

1. Monitoring screen : You can watch monitoring screen as many as number of cameras connected to server in type of divided screens at clients.
2. Current : Server receives repeated transmission of images.
3. Stop : Suspend transmission of images.
4. Search : Search an image, which has been saved at server by being switched to Server Image Inquiry program.
5. PAN/TILT : For more information, refer to '2-2-1 Recording Program PAN/TILT Control Panel' of JD-1500 LOCAL System.
6. Completion : Escape to client control program (without connection with server).
7. Saving Image : Save Images of selected Camera number to Client system.  
(When A button clicked, save all images of connected cameras.)

### 3-3 Server Images Inquiry

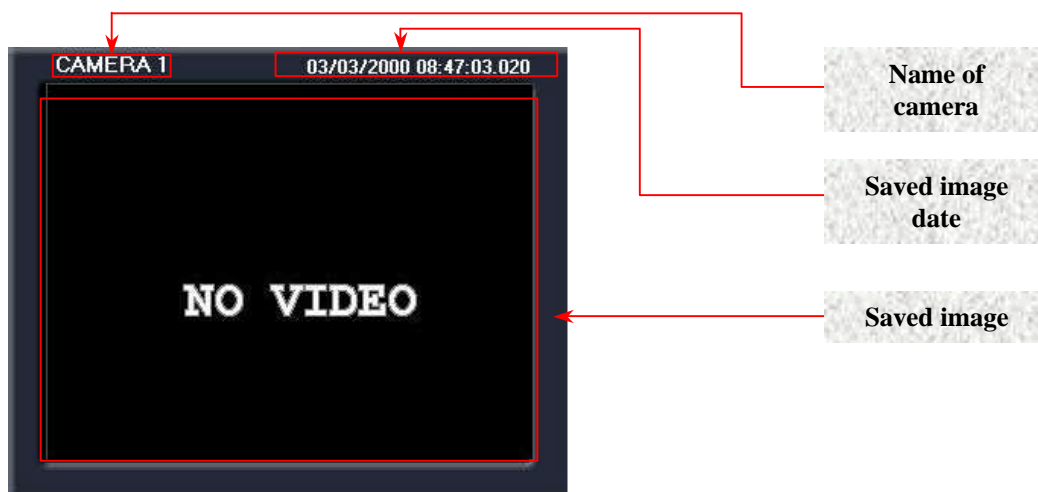


Server Image Inquiry program allows you to connect with server at client by using LAN, WAN or modem to inquire or delete images at present and in the past.

1. Image display : Display images of a selected camera.
2. Saved image date display : Identify date of saved image with circle mark.
3. Image search and camera selection : You may select camera for search by using main control panel of client program, and can play and delete images of the camera.
4. Image Save/backup/Output/Delete: Save/backup/Output/Delete Past Image from Server.

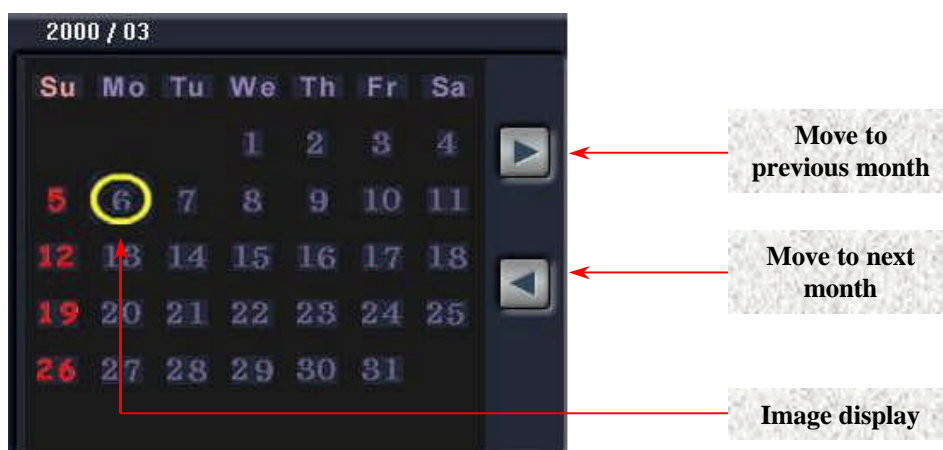


### 3-3-1. Image Display



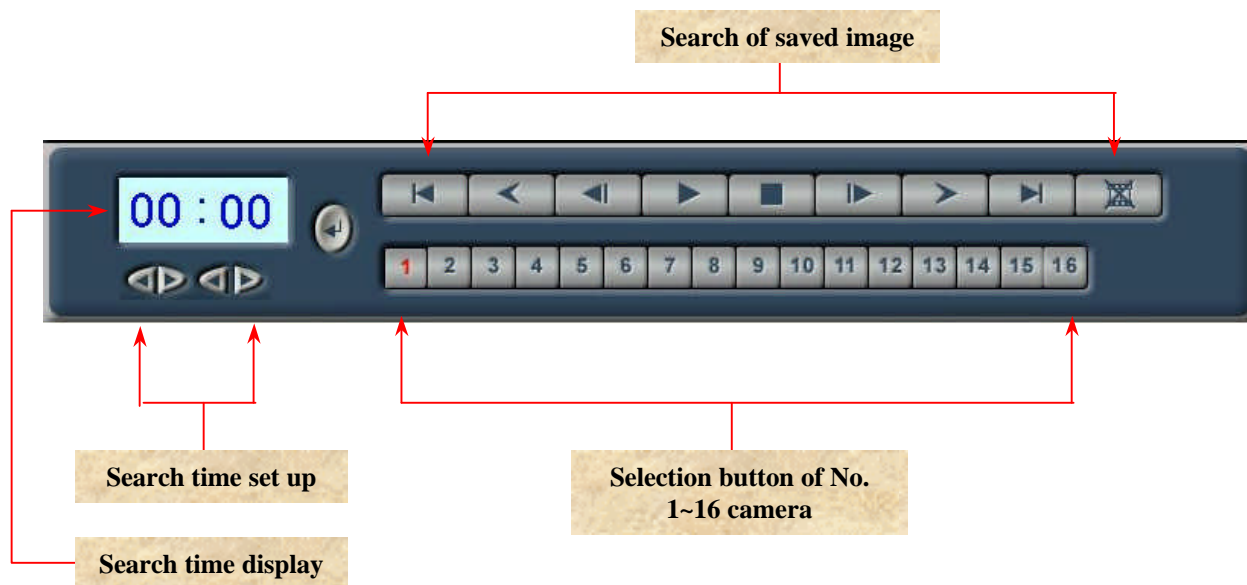
1. Name of camera : Display name of a selected camera.
2. Saved image date : Identify save date of an image.
3. Saved image : Display saved image.

### 3-3-2. Image date display



1. Move to previous month : Move to the month before current search month.
2. Move to next month : Move to the month after current search month.
3. Image display : Identify save date of image with red-colored circle.

### 3-3-3. Image Search and Camera Selection



#### 1. Search of saved image

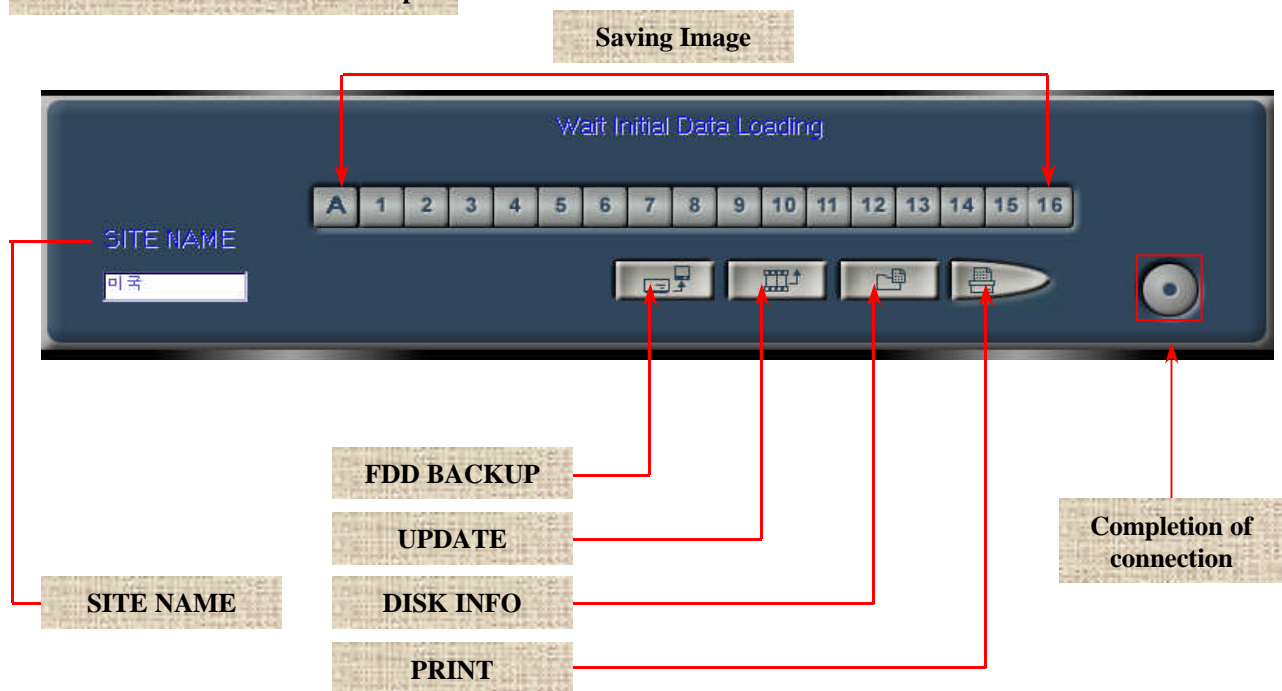
- A. : Move to initial screen of save image.
- B. : Move to 1 minute before screen of an image under search.
- C. : Move to previous screen of an image under search.
- D. : Play saved image.
- E. : Suspend an image under play.
- F. : Move to the screen next to an image under search.
- G. : Move to 1 minute after screen of an image under search.
- H. : Move to last screen of saved image.
- I. : Delete images under search.

2. Search time set up : Input time for search among saved images.

3. Search time display : Identify input time at Search Time Set Up.

4. Camera selection : Select a camera to search among No. 1~16 camera.

### 3-3-4. Server Environment Set Up



1. Site Name : Name of Connection server.
2. FDD backup : Save currently searching images in a diskette.
3. Image update : Update images saved during search.
4. DISK information display : Display current capacity of hard disk.
5. Printout : Printout images with printer.
6. Connection completion : Complete connection with server.
7. Saving Image : Save Images of seleted Camera number to Client system.  
(When A button clicked, save all images of connected cameras.)

## 3-4 JD-2000 LAN/MODEM System Operation

1. Run JD-2000 LAN/MODEM program.
2. See '3-1. Client Images Inquiry' to know the images that have been saved at client.
3. Select server for connection among lists of 'Select Site'.

To connect new server additionally, follow operation in order as follows:

- A. Click 'Server Add' to connect to new server.
  - B. Fill out site name of new server at 'Site Name' box.
  - C. Fill out IP address of server to let new server make use of LAN at 'Number' box. On the other hand, fill out telephone number for connection to let server to connect to modem.
  - D. Lastly, click Server Add Application button to register new site at lists of Select Site.
4. Click Server Connection button to connect to server.
  5. Connection to server makes Server Monitoring program window become active.
  6. Click Search button to check images that have been saved at server.  
Click the button to return to Server Images Inquiry screen.
  7. Refer to '3-4. Client Images Inquiry' to know images that have been saved at server.

## Chapter 4

### Question & Answer of JD-2000 System

**Read carefully following cases to help you solve problems properly and save time.**

**Q. I am unable to save images.**

**A. If a waveform, system operation mark of recording program, does not move, or a part or all of cameras has not been saved despite movement of the waveform, check JD-2000 as follows:**

1. Check that number of units being connected to JD-2000 has been properly set up  
(See 'Amount' of 'Control Program -Set Up').
2. Check that you have selected NTSC of camera mode (See 'Video' of 'Control Program-Set Up'.)
3. Check that you have correctly set up amount of camera, and have selected day of the week for recording  
(See 'Reserved' of Control Program-Set Up).  
If you do not run sensor, turn all of sensors OFF, and click column of 'Use Recording Schedule' to run recording of image.
4. Check that you have clicked 'Area', and have selected 'Selection of Motion Sensibility Mode' as well as 'Motion Block', and have selected 'Minimum' of 'Motion Sensibility Control'  
(See 'Motion' of Control Program-Set Up.)

**Q. I cannot watch overall screen in the use of PAN/TILT.**

**A. If you are unable to watch overall screen at center of the screen despite clicking PAN/TILT, take action as follows:**

1. Check that you have clicked option of 'Run Camera PAN/TILT by overall screen'  
(See 'Video' of Control Program-Set Up.)

**Q. Sometimes, I watch broken screen while conducting search.**

**A. If a part or all of the screen has been broken, take action as follows:**

1. Such a phenomenon may occur at different set up of resolution saving between search and saving  
(See Video-Control Program - Set Up).  
Select 'DELETE ALL IMAGE' of 'DISK INFO.' (See Search program), and delete all of saved screens, and check again.

**Q. Recording program produces not image, but black-colored screen.**

**A. If an image is not produced, take action as follows:**

1. Check that you have selected '32 Bit (True Color)' of color attributes of Display Registration (See Control Panel of Windows).
2. Check whether there is an error of 'Video Capture64[BSR1000]' of 'Sound Video and Game Controller' of system manager tab (See System Registration of control panel of Windows).
3. If same phenomenon may occur under a circumstance in the above, files of system controller is wrong. So, you are asked to procure a good program.



**Q. I have set up Control Program perfectly. But, I cannot run recording.**

**A. In the case, take action as follows:**

1. Sensor may cause such a problem. Turn the sensor OFF (See 'Reservation' of Control Program), and inspect the sensor again.

**Q. Images on display produce 'noise' similar to lines.**

**A. If so, take action as follows:**

1. Replace camera and lines, which produce noise, with lines of other camera. Then, inspect them again.
2. Video card of the system may cause the problem. Replace your video card, and inspect it again.
3. Monitor may cause the problem. Replace your monitor, and inspect it again.
4. When the problem persists despite your action in the above, contact DVR Business Division of the company.

**Q. A failure still occurs despite installation of program once again.**

**A. Delete your program completely, and then install it again.**

1. Delete JD-2000 related program at 'Add/Delete of Program' of control panel of Windows.
2. Delete '\_NDE\_' directory of D drive.
3. Select 'Execution (R)' of 'Start' button to input 'REGEDIT' and run JD-2000.
4. Delete 'BaekSANEnterprise' of 'SOFTWARE' directory under 'HKEY-CURRENT-USER'.
5. Install your program again.
6. When the problem still persists despite your action in the above, contact DVR Business Division of the company.

**Q. When time elapses under JD-2000 ON, power system is OFF.**

**A. Set up all of items of power system control of control panel to be 'Always turn ON'.**

1. Click 'Power system control' icon of control panel of Windows.
2. Select 'Home use/Office use' of power system configuration.
3. Select 'Always turn ON' at System Standby, Monitor OFF, and Hard disk OFF.

**Q. I cannot connect JD-2000 LAN/MODEM with server.**

**A. Check that your network runs under normal status.**

1. Fill out 'COMMAND' at 'Execution (R)' of 'Start' button. Then, run JF-2000.
2. When MS-DOS window becomes active, fill out 'PING 169.254.0.1' under prompt ON.
3. Figures following 'PING' identifies IP address of server system.
4. When a message of 'REPLY FROM 169.254.0.1 ...' makes appearance on screen, your server system runs under normal status.