

USB Stick Type R/W

User Manual



Jujo Electronics Corporation
Version 2.0
All Rights Reserved

Page	
USER MANUAL	1
1. PRODUCT FEATURES.....	3
2. OPERATING ENVIRONMENT	5
2.1 MINIMUM SYSTEM REQUIREMENTS.....	5
2.2 SUPPORTING OPERATING SYSTEM	5
2.3 NECESSARY SUPPORTS OF USB HOST CONTROLLER	5
3. INSTALLATION OF THE DRIVERS.....	6
3.1 INSTALLATION IN WINDOWS98 SE.....	6
3.2 INSTALLATION IN WINDOWS2000 PRO	8
3.3 OTHERS	11
4. TROUBLESHOOTING	12
5. INSTALLATION OF SIM CARD AND NOTES	13
5.1 DIAGRAM OF USB STICK TYPE R/W	13
5.2 INSTALLATION OF SIM CARD	13
5.3 TAKING OUT OF SIM CARD.....	14
5.4 OTHERS:	15

FCC-B Radio Frequency Interference Statement

FCC ID: PIT-8018II

This device complies with Part 15 of the FCC Rules. Operation is subject to the following two conditions: (1) This device may not cause harmful interference, and (2) this device must accept any interference received, including interference that may cause undesired operation.

Instruction Manual

Federal Communication Commission Interference Statement

This equipment has been tested and found to comply with the limits for a Class B digital device, pursuant to Part 15 of the FCC Rules. These limits are designed to provide reasonable protection against harmful interference in a residential installation. This equipment generates, uses and can radiate radio frequency energy and, if not installed and used in accordance with the instructions, may cause harmful interference to radio communications. However, there is no guarantee that interference will not occur in a particular installation. If this equipment does cause harmful interference to radio or television reception, which can be determined by turning the equipment off and on, the user is encouraged to try to correct the interference by one of the following measures:

- Reorient or relocate the receiving antenna.
- Increase the separation between the equipment and receiver.
- Connect the equipment into an outlet on a circuit different from that to which the receiver is connected.
- Consult the dealer or an experienced radio/TV technician for help.

FCC Caution: Any changes or modifications not expressly approved by the party responsible for compliance could void the user's authority to operate this equipment.

1. Product Features

USB Stick Type R/W is a novel, small smart SIM Card Reader. It not only provides an economic, universal and safe interface for Smart Card and PC users, but also boasts such features as easy-to-use (Plug and Play), fast transmission speed, small and serviceable. USB Stick Type R/W will be widely used in such areas as e-commerce.

Main Features:

- ◎ Fully compatible with USB1.1;
- ◎ In line with ISO7816;
- ◎ Up to the requirements of Microsoft WHQL USB Smart Card Reader;
- ◎ With WDM drivers, can be unfailingly used in various operating systems;
- ◎ Small in dimension and convenience in carrying (dimension: Height 8.2mm, Length 58.2mm, Width 17.3mm);
- ◎ Fast transmission speed (low speed 1.5M/s, full speed: 12M/s)。

Note: * WHQL is Windows Hardware Quality Labs

* WDM is Windows Driver Model

2. Operating Environment

2.1 Minimum system requirements

- ⊙ PC/AT or compatible PC (desktop computer or Notebook PC) with USB interface;
- ⊙ CPU: Pentium® 100MHz, 200MHz or higher is recommended;
- ⊙ RAM: 32Mbyte, 64Mbyte is recommended;
- ⊙ Hard Disk: 20Mbyte free hard disk space or more;

2.2 Supporting Operating System

Supports the following Windows operating environment:

- ⊙ Windows 98
- ⊙ Windows 98 Second Edition
- ⊙ Windows Millennium Edition
- ⊙ Windows 2000 Professional (SP1, SP2)
- ⊙ Windows 2000 Server
- ⊙ Windows XP Home Edition
- ⊙ Windows XP Professional

2.3 Necessary supports of USB Host Controller

Your computer should have:

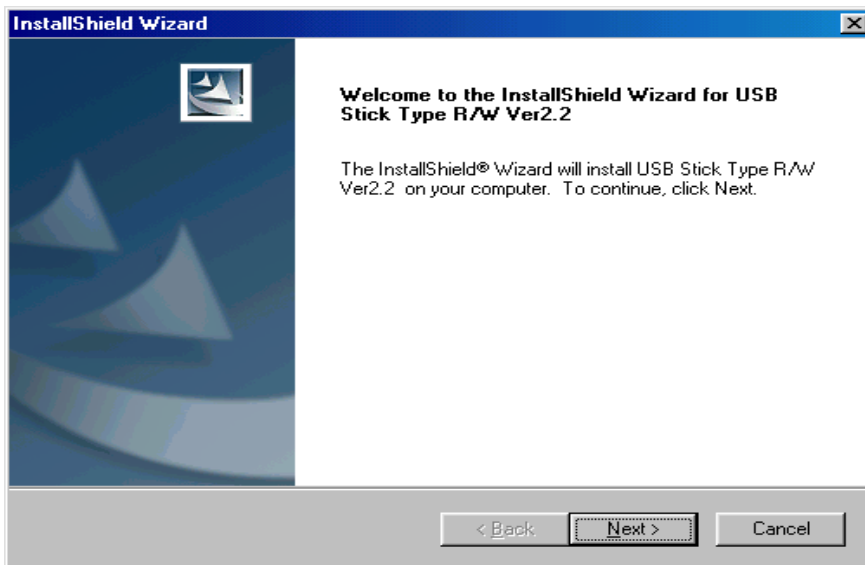
- ⊙ UHCI Universal Hub Controller Interface
- ⊙ OHCI Open Host Controller Interface

3. Installation of the drivers

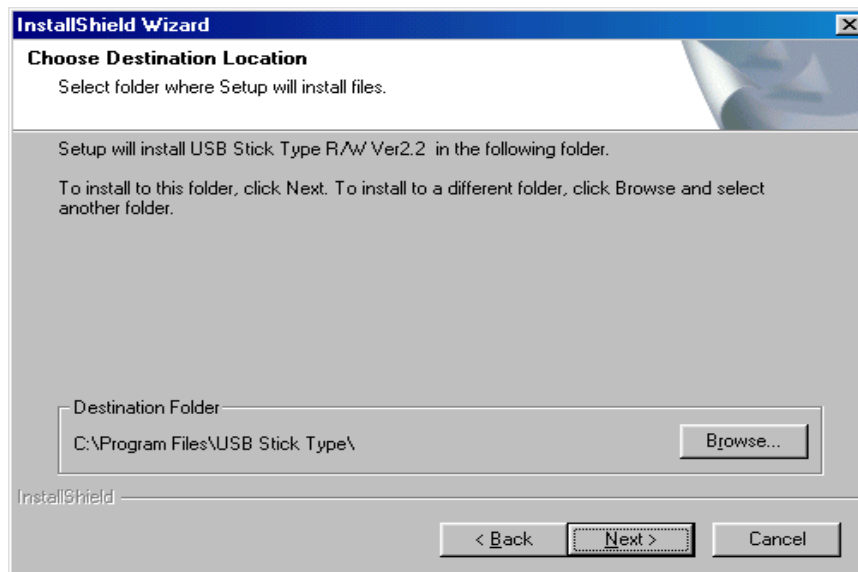
It is strongly recommended that you close any application before installing the software. The following are the installation in Windows98 and Windows2000 Professional.

3.1 Installation in Windows98 SE (ME)

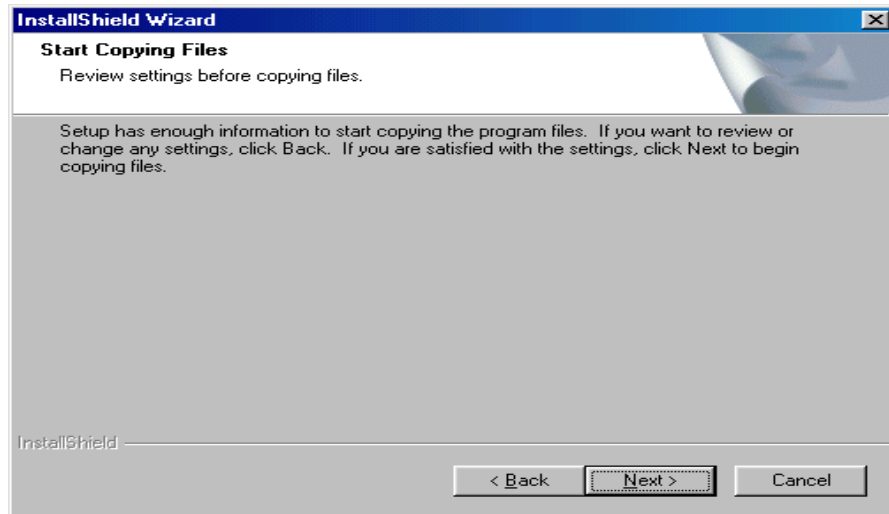
- 1、 Turn on the power supply to your PC and make sure the computer has connected to internet. Download the drivers for USB Stick Type R/W from <http://jujo-electronics.com/downloads/>.
- 2、 Store the downloaded file in your computer, as: C:\desktop\
- 3、 Double-click the setup.exe and setup, click Next and continue the installation;



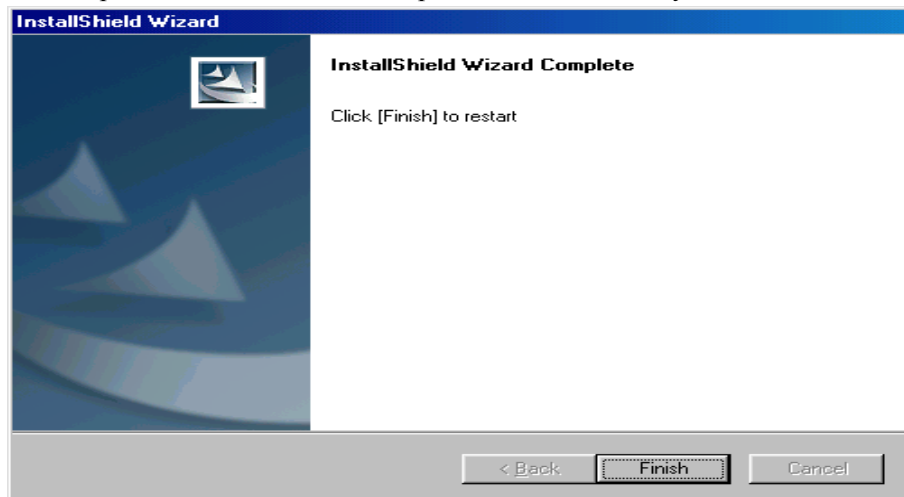
- 4、 When the following appears, click Browse and select a folder you like to install the USB Stick Type R/W Ver2.2, or click Next to use the destination folder.



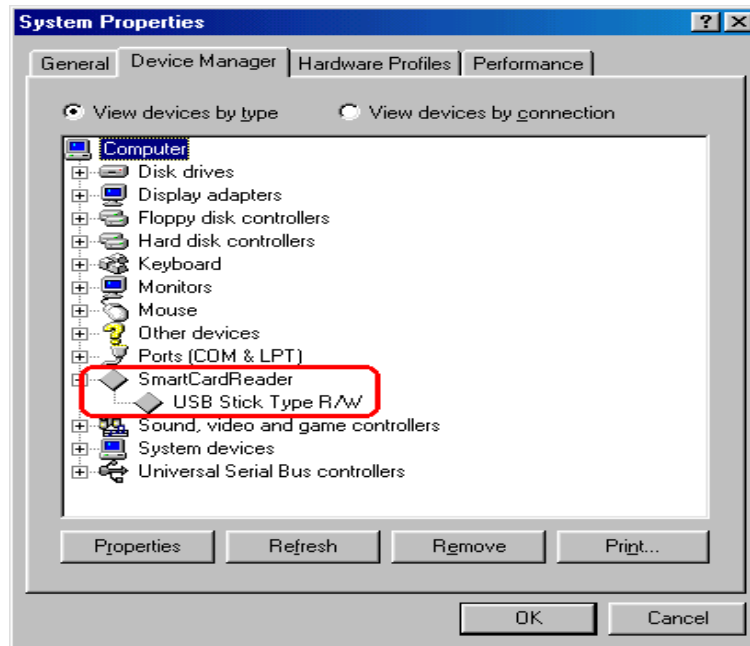
Click Next to begin copying files;



5. When complete, click Finish, the computer will automatically restart;

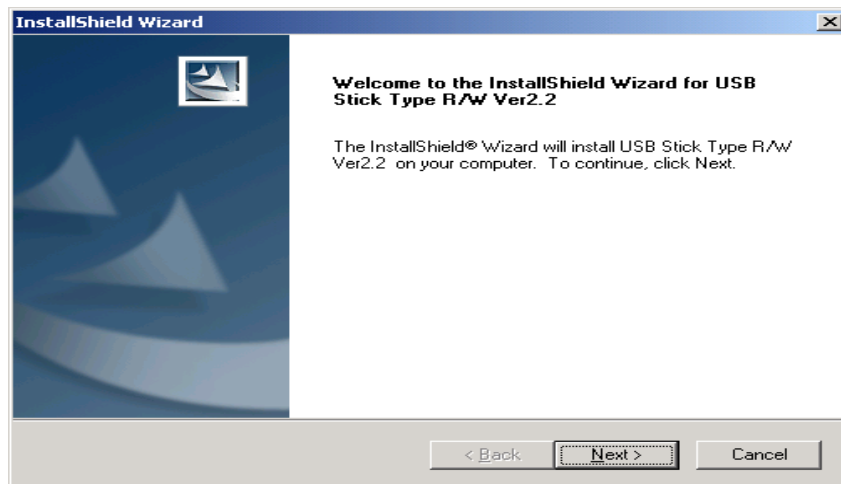


6. After restarting, insert USB Stick Type R/W. When the computer found the hardware, you can see [Smart Card Reader] in Device Manager; the following means the installation has been successfully completed;

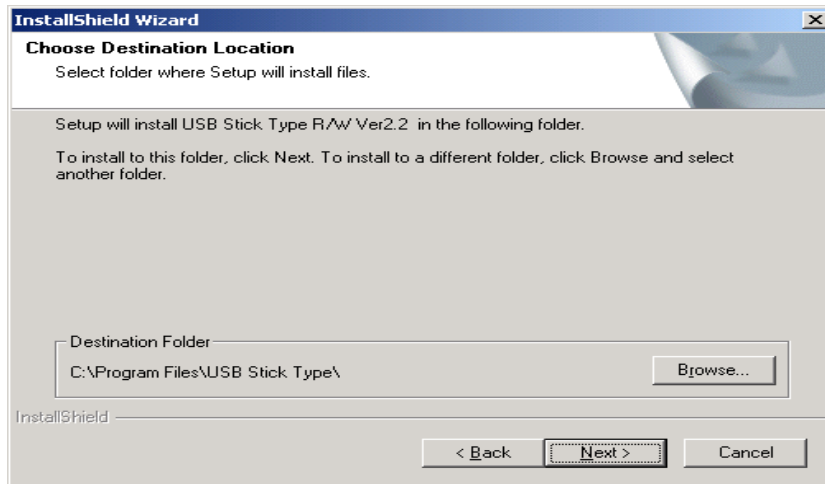


3.2 Installation in Windows2000 Pro(XP)

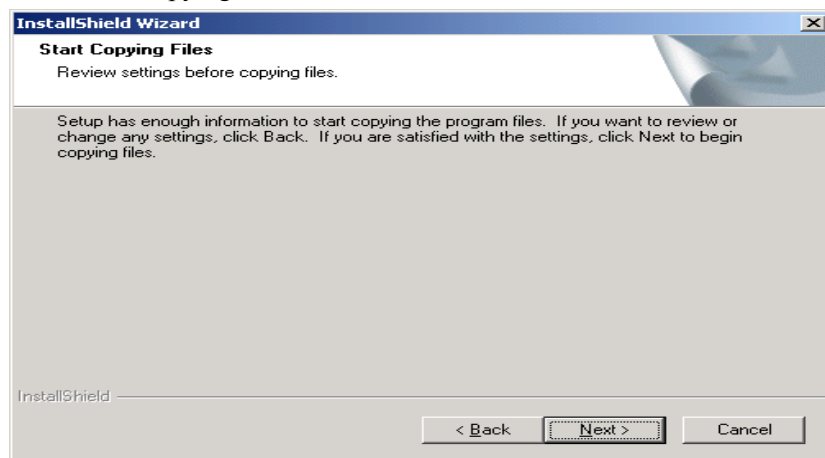
- 1、 Turn on the supply to the PC and make sure the computer has connected to Internet. Download the drivers for USB Stick Type R/W from <http://jujo-electronics.com/downloads/>.
- 2、 Store the downloaded file in some place in your computer, as: C:\desktop\
- 3、 Double-click the setup.exe and begining to install the Setup, click Next to continue;



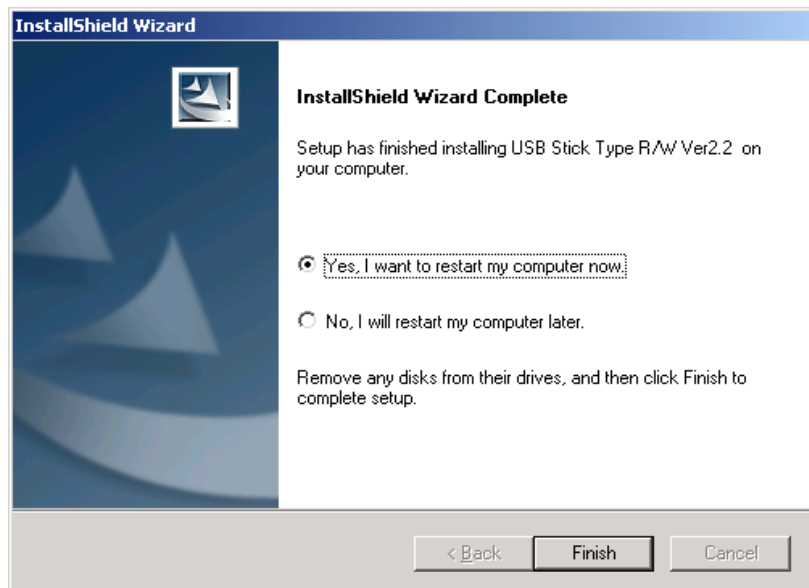
- 4、 When the following appears, click Browse to select a destination folder, or just click Next to use the following folder.



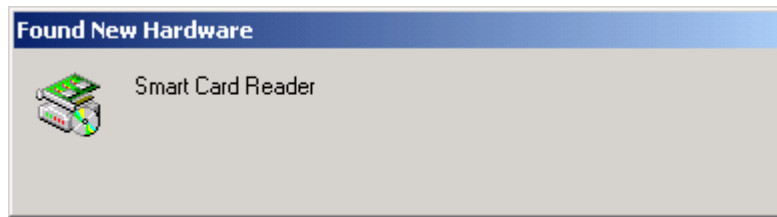
Click Next to start copying files;



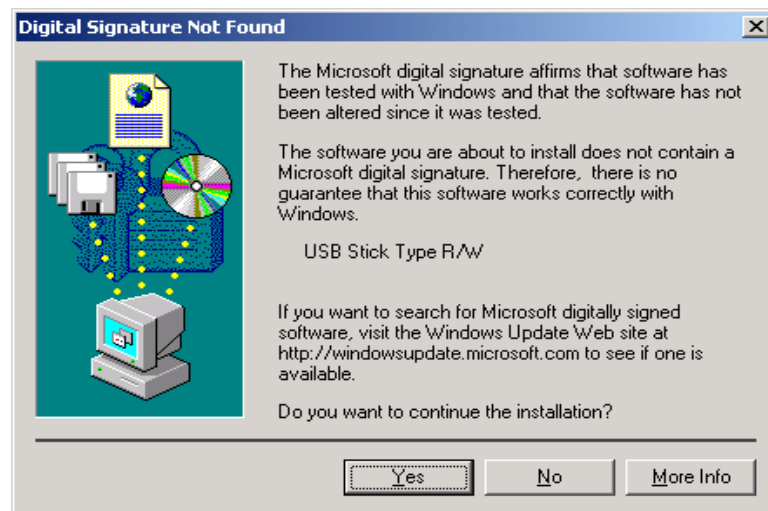
5. After completing the installation, select [Yes, I want to restart my computer now] to restart your computer, if you don't want to restart now, you can select [No, I want to restart my computer later];



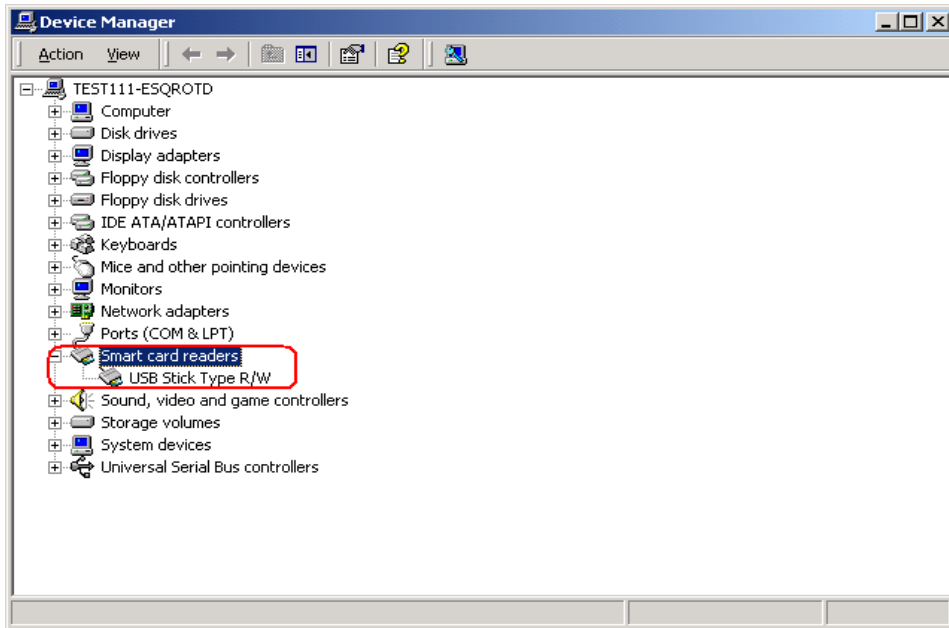
6. After restarting, insert USB Stick Type R/W, the computer will find the new hardware (as the following);



After a while, the prompt [Digital Signature Not Found] will appear, choose [yes] to continue the installation;



- 7、 After completing the installation, you will see [Smart Card Reader] in Device Manager; the following means the installation has been successfully completed;

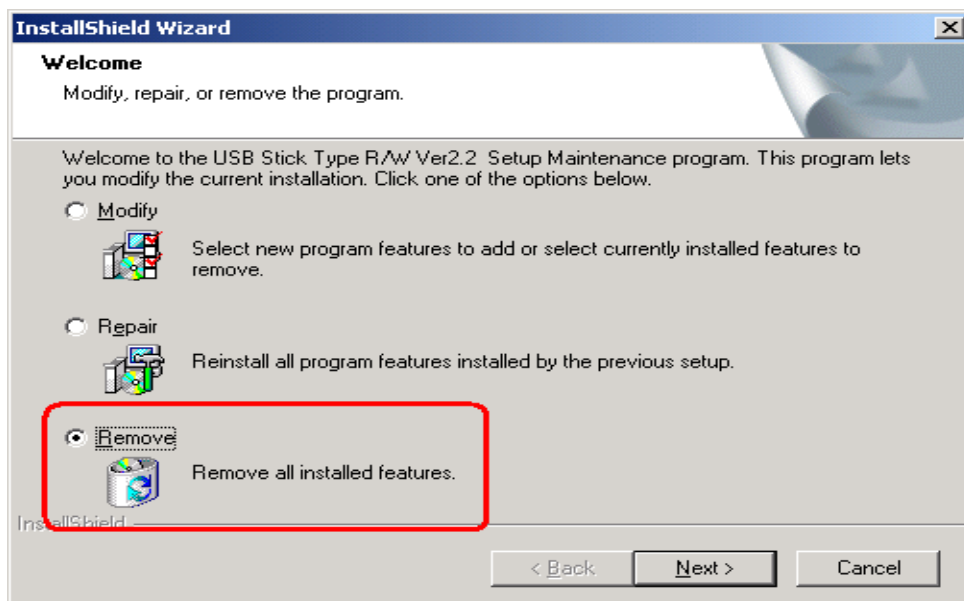


3.3 Others

1、 For the installation in other Windows98 SE versions and Windows ME, refers to the installation in Windows98;

2、 For the installation in Windows2000 Pro and Windows XP, refers to the installation in Windows2000 Pro.

3、 How to remove: first make sure the USB Stick Type R/W has been taken out, choose “Add/Remove Application” in Control Panel, find USB Stick Type R/W in the menu, choose “Remove”.



4. Troubleshooting

The following table lists the problems that you may encounter and their solutions.

Problem	Cause	Solution
Why can't you see the USB device in "Device Manager"?	You probably disabled the Plug&Play in BIOS.	Restart your computer and press "Del" to enter BOIS , select "PnP / PCI Configuration" menu and carefully check every item to make sure that "PnP Os Installed" is "Yes" (enable the Plug and Play), change "Assign IRQ For USB" into "Enable".
Why doesn't my operating system support USB interface?	You may use Windows95 or Windows 3.1 ; or Windows NT.	Such systems don't support USB interface, you should upgrade your operating system to Windows98 or higher Windows operating system.
Why can't my card reader work properly suddenly?	You may delete or damage the installed drivers by accident.	Reinstall the drivers.
Why is there a yellow question mark or exclamation mark before my USB SIM Card Reader in "Device Manager"?	It shows that the USB device can't work probably, you may have not installed the drivers.	Install the drivers.

5. Installation of SIM card and Notes

5.1 Diagram of USB Stick Type R/W

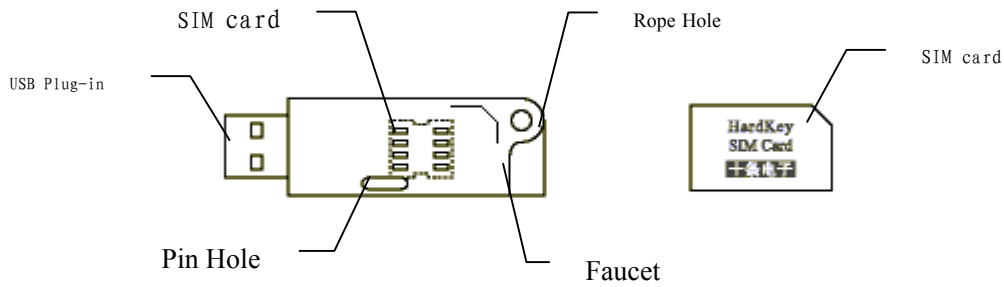


Figure 1

5.2 Installation of SIM Card

(1) Platform:

Installation: hold the front of the SIM Card (with gap up), slightly insert the SIM card. Make sure the SIM card should be fully inserted into the base to be fully engaged with it.

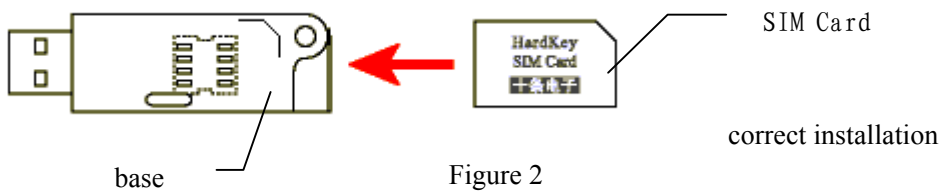


Figure 2

The following is a false installation:



Figure 3

(2) Lateral view:



Figure 4

(3) SIM Card should be fully engaged with the base:

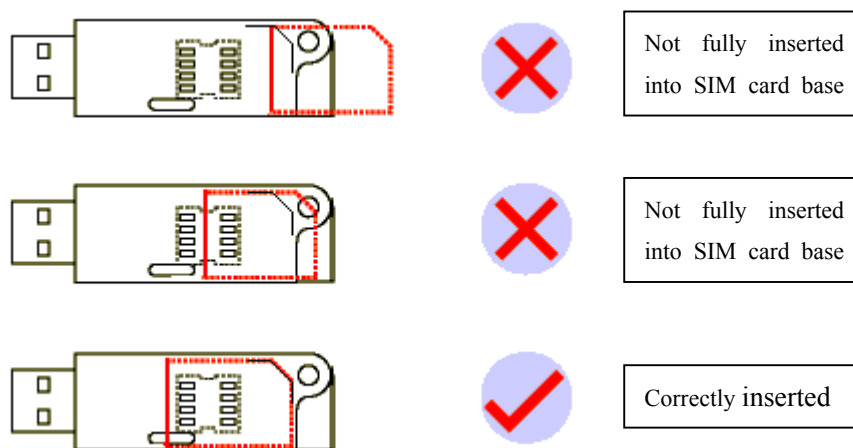


Figure 5

5.3 Taking out of SIM Card

Taking out: insert a pin into the base and slightly push the SIM card out (as Figure 6) .

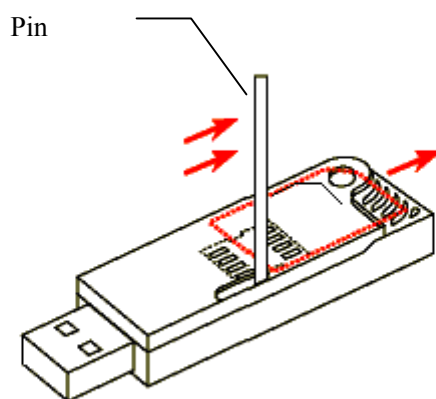


Figure 6

5.4 Others:




Don't touch the SIM Card	Keep away from magnetic body	Keep the temperature between 10 and 60° C
 A red outline of a hand with the index finger touching the gold contacts of a SIM card.	 A red outline of a U-shaped magnetic object with two lightning bolts striking the gold contacts of a SIM card.	 A red outline of a thermometer next to a SIM card.

Figure 7