

## **Optical Wireless Mobile Mouse User Manual**

## Battery Installation

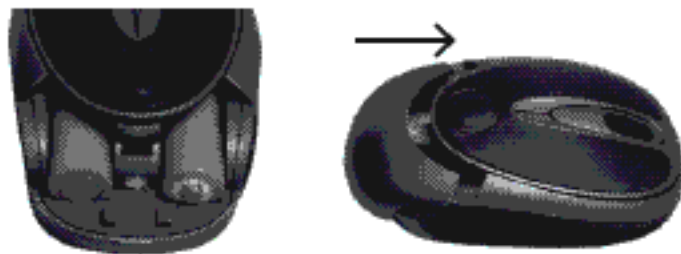
*Note: The pictures shown in the User's Manual are for demonstration purposes only. Your product may look slightly different.*

To properly install batteries into your Mouse, please follow the instructions below:

1. Press the Cover Release Button on the top of your Mouse and slide to remove the Battery Compartment Cover from your Mouse.



2. Install two AA Batteries into your Mouse following the battery orientation guide in the battery bay and then replace the Battery Compartment Cover back onto your Mouse until it securely locks.

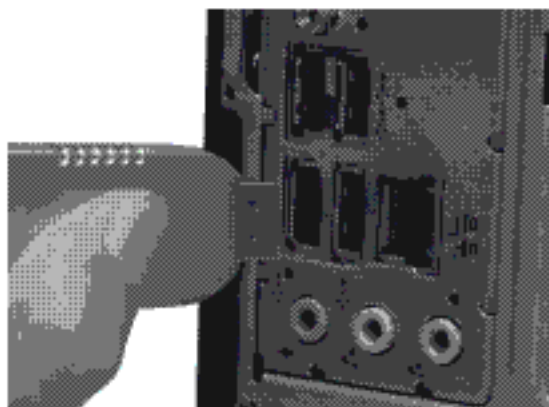


3. After the AA Batteries have been installed into your Mouse properly, the LED inside your Mouse will light up.



## Installation for all Operating Systems

1. Make sure you have successfully installed the AA Batteries into your Mouse, refer to the Installing Batteries section in this manual if necessary.
2. Turn on your computer, plug the enclosed USB Receiver into an available USB port on your computer. The LED indicator of the USB Receiver will flash slowly. (Tip: If you are not able to find an available USB port on your computer, please refer to the user's manual of your computer for more help.)



3. Your wireless optical mouse is now ready to be used. (Note: if your mouse can not be used immediately after the USB Receiver has been installed, there might be a high level of interference preventing the mouse from connecting to the receiver automatically. Please proceed to the Establishing a Connection section of this manual to manually connect your mouse to your receiver.)

## Establishing a Connection

1. Place the mouse near by the receiver.
2. Press the button at the bottom of your mouse for about 2 seconds, the LED indicator of the USB Receiver will flash rapidly and then turn off.
3. Your wireless optical mouse is now ready to be used.



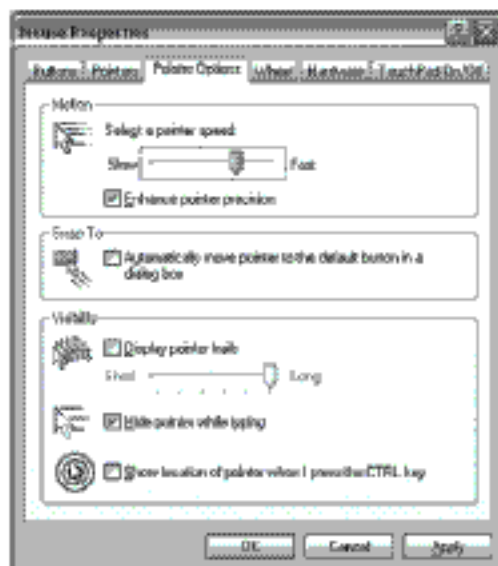
## Changing the Speed of your Mouse

To adjust the speed of the cursor or the scroll button features on your computer, please follow the instructions below:

*Note: The screenshots show in this section are for demonstration only and your screen may look slightly different but with similar options.*

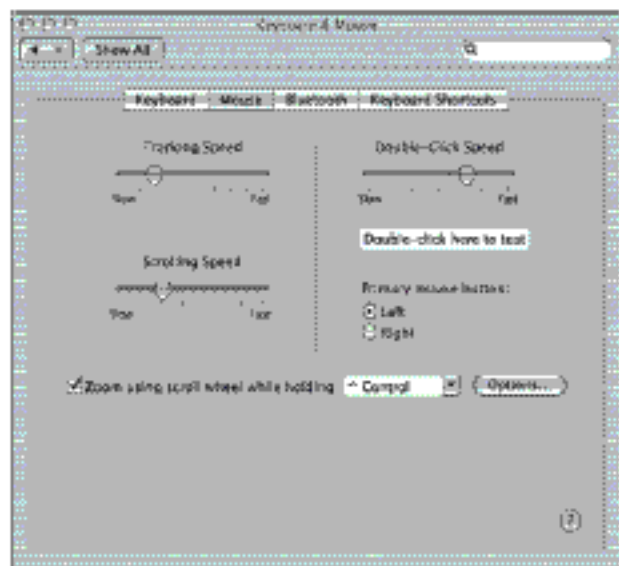
### For Windows®

Open the **“Control Panel”**, and double-click the **“Mouse”** icon to open the mouse properties screen, and then select the **“Pointer Options”**. After you have made your changes, select **“Apply”**, and then **“OK”**.



### For Mac®

Open the **“System Preferences”**. At the System Preferences screen, click the **“Keyboard & Mouse”** icon to open the Keyboard & Mouse screen, and then select the **“Mouse”** tab and make your changes.



## **FCC WARNING**

This device complies with Part 15 of the FCC Rules. Operation is subject to the following two conditions:

- (1) this device may not cause harmful interference, and
- (2) this device must accept any interference received, including interference that may cause undesired operation.

NOTE: This equipment has been tested and found to comply with the limits for a Class B digital device, pursuant to part 15 of the FCC Rules. These limits are designed to provide reasonable protection against harmful interference in a residential installation. This equipment generates, uses and can radiate radio frequency energy and, if not installed and used in accordance with the instructions, may cause harmful interference to radio communications. However, there is no guarantee that interference will not occur in a particular installation. If this equipment does cause harmful interference to radio or television reception, which can be determined by turning the equipment off and on, the user is encouraged to try to correct the interference by one or more of the following measures:

- Reorient or relocate the receiving antenna.
- Increase the separation between the equipment and receiver.
- Connect the equipment into an outlet on a circuit different from that to which the receiver is connected.
- Consult the dealer or an experienced radio/TV technician for help.

NOTE: The manufacturer is not responsible for and radio or TV interference caused by unauthorized modifications to this equipment. Such modifications could void the user's authority to operate the equipment.