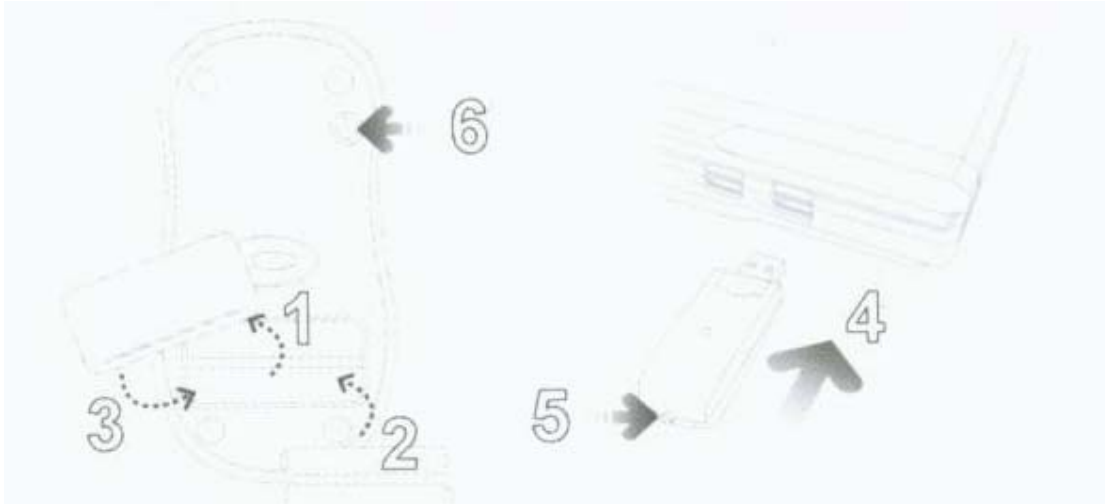


# JM-39R USER MANUAL

## Installation:

NOTE: The pictures show in the User's manual are for demonstration purposes only. Your computer may look slightly different.



1. Remove the **battery compartment cover** located on the bottom of your mouse.
2. Install two AAA batteries into your mouse following the battery orientation guide in the battery bay, and then replace the cover back onto your mouse.
3. Turn on your computer and wait for it to load.
4. Plug the **Wireless USB Receiver** into an available USB port on your computer .Your mouse will establish a connection with the receiver and is ready to be used. If a connection is not established , there might be a high level of surrounding interference, press the **Connect** button on the back of the **Receiver** , and press the **Connect** button on the back of your mouse.
5. Your computer will detect your mouse and the necessary drivers will be installed automatically.
6. Your mouse is now ready to be used.

## FCC Caution:

This device complies with Part 15 of the FCC Rules. Operation is subject to the following two conditions: (1) this device may not cause harmful interference, and (2) this device must accept any interference received, including interference that may cause undesired operation.

## FCC Notes:

The manufacturer is not responsible for and radio or TV interference caused by unauthorized modifications to this equipment. Such modifications could void the user's authority to operate the equipment.