

AR2000 BK-BGL User Manual

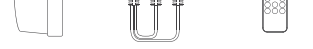
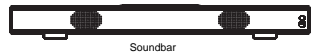
AR+SOUND

Bluetooth
SLIM BLUETOOTH SOUNDBAR
AR2000BK-BGL

User Manual

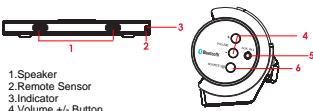


IN THE BOX:



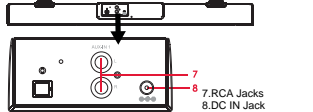
LOCATION OF CONTROLS:

FRONT VIEW SIDE VIEW



1. Speaker
2. Remote Sensor
3. Indicator
4. Volume +/- Button
5. AUX-IN 2 Jack
6. SOURCE/ (Standby) Button

TOP VIEW



7. RCA Jacks
8. DC IN Jack

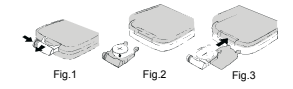
LOCATION OF CONTROLS (CONT):



1. Power ON/OFF button
2. Skip Forward/Backward button
3. EQ (Equalizer) button
4. BASS +/- buttons
5. Mute button
6. Play/Pause button
7. SOURCE button
8. VOL (Volume) +/- buttons
9. TREBLE +/- buttons

Battery Installation for Remote Control

- First Time Use
Remove and discard the insulation tab as figure on the right.
- If the battery is consume, replace it as below:
1. Push and slide out the battery holder as figure 1 below.
2. Replace the battery with a new CR2025 button cell as the polarity markings on the rear of the Remote Control.
3. Close the battery holder.



BASIC OPERATION:

- To Turn the Unit ON
Connect the supplied power adapter to the DC IN jack. Then press the SOURCE/ button on the unit or the button on the remote control.
- To Turn the Unit OFF
Press and hold the SOURCE/ button on the unit or press the button on the remote control.

NOTE: If the unit is not going to be for a long period of time, disconnect the power adapter.

AUX IN OPERATION:

Examples of AUX IN sources are personal audio players and computers.

- AUX IN Connection
1. Connect a 3.5 mm auxiliary cord (included) between your audio player and the AUX-IN 2 Jack on the right side of the Soundbar.
2. Press the SOURCE/ button on the unit or the button on the remote control to turn on the Soundbar.
3. Press the SOURCE/ button on the unit or the SOURCE button on the remote control repeatedly until the indicator turns Orange.
4. Set your personal audio player to play.

AUX IN Playback:

- Press the button on the remote control to turn the sound OFF. Press again to resume sound.
- Press the Volume +/- button on the unit or the VOL +/- button on the remote control to adjust the volume level.
- Press the Bass +/- button on the remote control to adjust the bass level.
- Press the Treble +/- button on the remote control to adjust the treble level.
- Press the EQ button on the remote control to switch the equilibrium between POP/JAZZ/CLASSIC/ROCK/NORMAL.

RCA AUX IN OPERATION:

Examples of RCA AUX IN sources are television sets, DVD players, and VCR players.

- RCA AUX IN Connection:
1. Connect RCA cord (included) between your audio player and the AUX-IN 1 Jacks on the top of the Soundbar.
2. Press the SOURCE/ button on the unit or the button on the remote control to turn on the Soundbar.
3. Press the SOURCE/ button on the unit or the SOURCE button on the remote control repeatedly until the indicator turns Green.
4. Set your personal external player to play.

RCA AUX IN Playback:

- Press the button on the remote control to turn the sound OFF. Press again to resume sound.
- Press the Volume +/- button on the unit or the VOL +/- button on the remote control to adjust the volume level.
- Press the Bass +/- button on the remote control to adjust the bass level.
- Press the Treble +/- button on the remote control to adjust the treble level.
- Press the EQ button on the remote control to switch the equilibrium between POP/JAZZ/CLASSIC/ROCK/NORMAL.

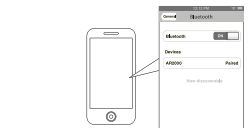
BLUETOOTH PAIRING & LINKING OPERATION:

1. Press the SOURCE/ button on the unit or the button on the remote control to turn on the Soundbar.
2. Press the SOURCE/ button on the unit or the SOURCE button on the remote control repeatedly until the indicator turns Blue.
3. Keep the unit and the Bluetooth enabled device within 3 feet of each other during the pairing process.
4. Set your mobile phone or other Bluetooth enabled device to search for Bluetooth devices.



On an iPhone

- Go to SETTINGS>GENERAL>BLUETOOTH (Make sure Bluetooth is turned ON)



On a BlackBerry

- Go to SETTINGS>OPTIONS>BLUETOOTH
- Enable BLUETOOTH



On an Android Phone

- Go to SETTINGS>BLUETOOTH>MENU>Search for devices(Make sure Bluetooth is turned ON)



On other Cell Phone/Devices

Review the instruction manual that came with your phone/device.



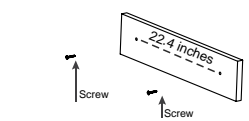
NOTE: The illustrations above are of many Bluetooth enabled phones today, and are used to explain the pairing process. Your mobile phone's interface and interaction with the headphones may be slightly different from the illustration above.

BLUETOOTH Playback:

- Press the button to pause playing track. Press again to resume playing.
- Press the button on the remote control to skip to next or previous track.
- Press the button on the remote control to turn the sound OFF. Press again to resume sound.
- Press the Volume +/- button on the unit or the VOL +/- button on the remote control to adjust the volume level.
- Press the Bass +/- button on the remote control to adjust the bass level.
- Press the Treble +/- button on the remote control to adjust the treble level.
- Press the EQ button on the remote control to switch the equilibrium between POP/JAZZ/CLASSIC/ROCK/NORMAL.

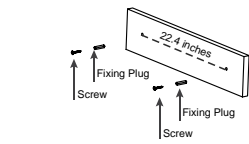
MOUNTING THE SOUNDBAR:

Mounting on wooden wall



1. Mark the position of the mounting screws on the wall using a pencil.
2. Drill the supplied screws directly into the marks that you have made on the wall and leave approx. 0.3 inch length to hook the sound bar.
3. Put the sound bar onto the mounting screws. Make sure they are firm and stable.

Mounting on brick wall



1. Mark the position of the mounting screws on the wall using a pencil.
2. Drill 2 holes by a powerful electric drill (Not Supplied).
3. Insert the supplied fixing plug and hammer into the holes.
4. Secure the supplied screws into the fixing plugs and leave approx. 0.3 inch length to hook the sound bar.
5. Put the sound bar onto the mounting screws. Make sure they are firm and stable.

TROUBLESHOOTING:

No sound is coming from the Soundbar.

- The volume may be too low. Try increasing the volume by pressing Volume+ button on the speaker or VOL+ button on the remote control.
- The connected device might not be in playback mode. Play music the connected Bluetooth device.
- The sound output of the connected device is weak. Increase the volume of the connected Bluetooth device.

The volume level for the Soundbar is too high.

- The volume may be too high. Try reducing the volume by pressing Volume- button on the speaker or VOL- button on the remote control.
- The sound output of the connected device may be too high. Try reducing the volume of the connected Bluetooth device.

The Bluetooth reception is not working.

- Make sure no other devices are connected to the Soundbar and try the connection again. If a device was connected to the speaker, unpair it before connecting your new device. Do this using your Bluetooth device's Bluetooth menu.

NOTE: Use of this unit near fluorescent lighting may cause interference regarding use of the remote. If the unit is displaying erratic behavior, move it away from any fluorescent lighting, as that may be the cause.

LEGAL INFORMATION

FCC Part 15: This product complies with Part 15 of the FCC Rules. Operation is subject to the following two conditions:
(1) this device may not cause harmful interference, and
(2) this device must accept any interference received, including interference that may cause undesired operation.
NOTE: This equipment has been tested and found to comply with the requirements for a Class B digital device under Part 15 of the Federal Communications Commission (FCC) Rules. These requirements are intended to provide reasonable protection against harmful interference in a residential environment. This equipment generates, uses and can radiate radio frequency energy and, if not installed and used in accordance with the instructions, may cause harmful interference to radio communications.
However, there is no guarantee that interference will not occur in a particular installation. If this equipment does cause interference to radio or television reception, which can be determined by turning the equipment off or on, the user is encouraged to try to correct the interference by one or more of the following measures:
• Reorient or relocate the receiving antenna.
• Increase the separation between the equipment and receiver.
• Connect the equipment into an outlet on a circuit different from that to which the receiver is connected.
• Consult the dealer or an experienced radio/TV technician for help.
Do not attempt to repair or modify this equipment.
Shielded cables must be used with this unit to ensure compliance with the Class B FCC limits.
If your electronic device has internal memory on which personal or other confidential data may be stored, you may want to perform a data backup process before you dispose of your device. Please note that you may want to reformat the hard disk partition process for your device before disposal. You may also check with your local recycling facility to determine the data sanitation procedure during the recycling process.

LIMITED WARRANTY

This product is supplied and distributed new by ATE Inc. ("ATE") to the original consumer purchaser is warranted by ATE against defects in material and workmanship for a period of one year from your date of purchase ("Warranty").
If the unit is found to be defective, or does not perform properly, you may return it within one year from your original date of purchase return it to the authorized service center for repair or exchange.

TO OBTAIN WARRANTY SERVICE:
• Provide proof of the date of purchase within the package (dated bill of sale).
• Prepay all shipping costs to the authorized service center, and
• Reimburse to insure your return.
• Include a return shipping address (RD, Boxes), a telephone contact number, and the defective unit within the package.
• Describe the defect or reason you are returning the product.

Your product will be repaired or replaced, at our option, for the same or similar model of equal value. If examination by the service center determines the product defective, products received damaged as a result of shipping, will require you to file a claim with the carrier.

The shipping address of the authorized service center is:
ATE Inc.
ATTN: Customer Service (2nd floor)
142 52nd Street
Brooklyn, NY 11232

IN NO EVENT WILL ATE, ITS MANUFACTURERS, DISTRIBUTORS OR PLP INC. HOLDINGS, LLC BE LIABLE FOR ANY INCIDENTAL, DIRECT, INDIRECT, SPECIAL, PUNITIVE OR CONSEQUENTIAL DAMAGES, SUCH AS, BUT NOT LIMITED TO, DAMAGES FOR LOSS OF PROFITS, BUSINESS, REVENUE, LOSS OF REVENUE OR DATA RELATED TO THIS PRODUCT, EXCEPT AS STATED HEREIN. NO OTHER WARRANTIES SHALL APPLY.

Should you have any questions or problems concerning this product, please contact our customer service department at:
Customer Support
1-877-968-4848 (Toll Free)
cs@slimbluetooth.com

Monday - Friday: 9AM - 10PM (EST)