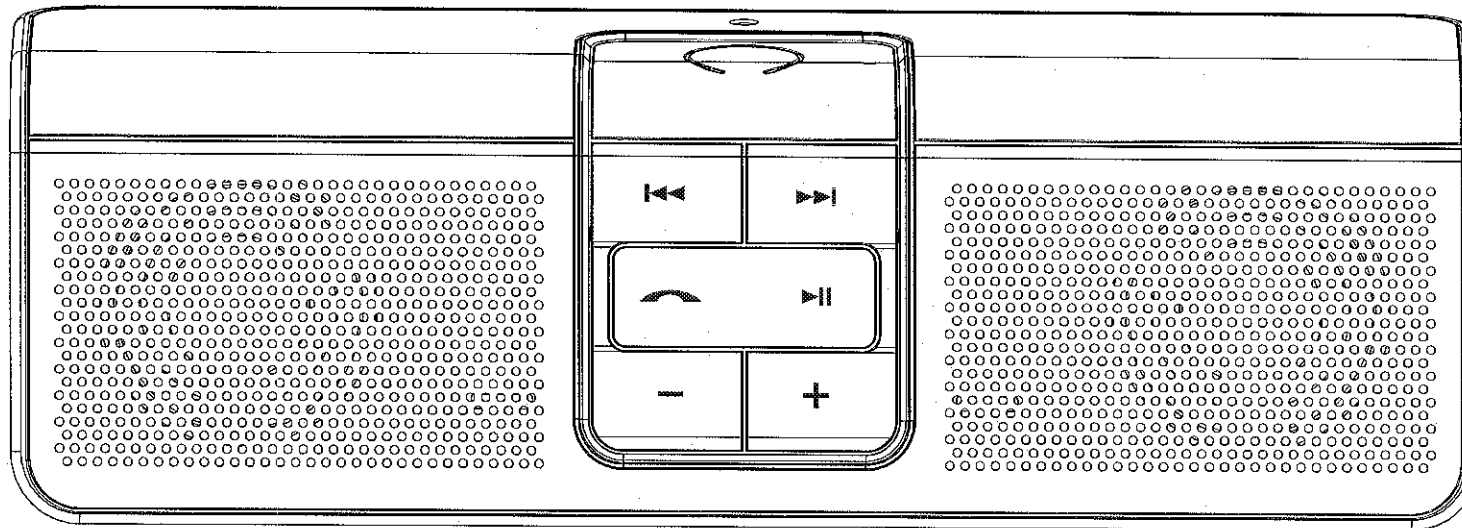


USER MANUAL

Bluetooth Portable Hands-free Speaker



1. Before you use this device, please make sure that you:

- 1.1 Put four AA batteries into compartment or connect power adapter into DC IN jack
- 1.2 To pair the speakers with a Bluetooth mobile phone or other Bluetooth devices before you making calls. The Bluetooth audio connection between the speakers and your phone can be established by setting up a PAIRED link. (Please refer 3.2 showed below for details.)

2. Instruction

2.1 Features

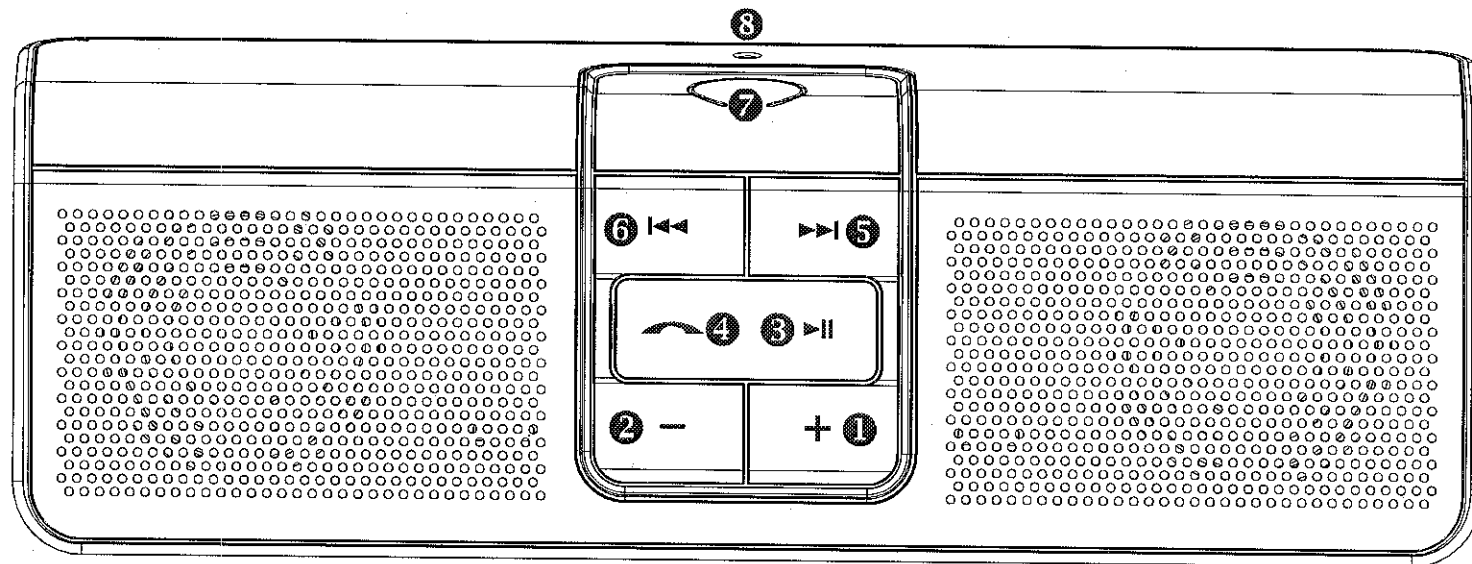
- 2.1.1 Line-in connection any kind of Audio Source
- 2.1.2 Wireless connection of Stereo Bluetooth Streaming from Audio Source.
- 2.1.3 Built-in S/W, AEC cancellation to reduce echo and background noise.
- 2.1.4 Built-in microphone to amplifier conversation via Skype, MSN & Yahoo Messenger.
- 2.1.5 Handsfree function for Car Kit, Con-Call Device, Amplified Speakers...etc.
- 2.1.6 Optional: Built-in magnet to stick on metal surface.
- 2.1.7 Slighness design easy to carry and storage.
- 2.1.8 Supported AA x4 battery and AC Adapter power supply.

2.2 Product Specification

Receiver Sensitive	<0. 1% BER at -80dBm
Bluetooth chipset	CSR BC03MM
RF Output Power(class 2)	-6~+4dBm
Operation Range	up to 10m
S/N Rate	>75dB
Frequency Response	150Hz~20KHz
Audio Output Power	2Wx2
Speakers	2 inch x2, 4ohm
Dimension (WxHxD)	212x75x54 mm
Clear talking Range	around 1m area

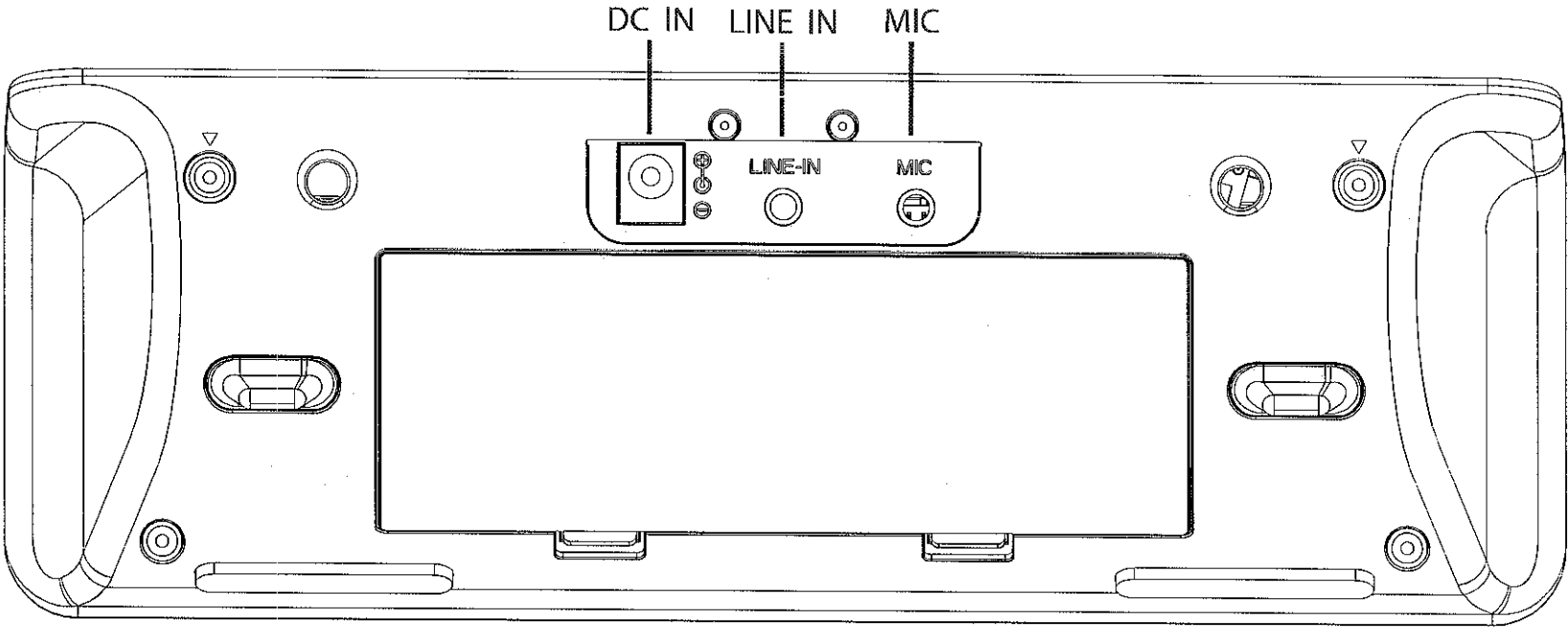
2.3 Product Outlook

Front View



1. Vol+
2. Vol-
3. Play/pause
4. Pick up/hang up
5. Backward
6. Forward
7. Power on/off
8. Indicator

Rear View



3. Prepare to use the product

3.1 Power Supply

3.1.1 Put AA battery 4 pieces into cell container with correct direction.

3.1.2 Insert the DC plug of the power adaptor into the DC jack of the speaker. Then connect the power plug to a suitable AC outlet.

3.1.3 Switch speaker's power button to ON position of the rear side, the power indicator (green) light on and the Bluetooth indicator (blue) blink.

3.2 Please make sure the speakers have connected with Bluetooth AV sources before you start use. Kindly following the pairing procedure show hereunder:

3.2.1 Turn your Bluetooth headphone power ON.

3.2.2 To activate Bluetooth devices searching from your Bluetooth AV sources by follow their original instruction. Please choose the device name and enter the pass key 『0000』 to establish a pairing connection.

3.2.3 The speaker supports two audio connections. Please select HEADSET/HANDSFREE profile if you like to connect to the mobile phone. Or A2DP/AVRCP profile for stereo sound effect to you audio sourcing.

3.2.4 Since pairing the blue indication will blink 0.5 second once When pairing succeeded the voice “PAIRING SUCCEEDED” appear. When connected, the blue indication will turn to fix light on.

Note: If the pairing can not be established, the blue indicator will regular blinking with 0.5 second once. A re-pairing procedure is needed. Please repeat pairing procedure listed above.

3.3 Audio Streaming via Bluetooth:

3.3.1 To play music via a Bluetooth AV Transmitter, please make sure the Bluetooth Wireless Speaker has been connected with the transmitter, blue indicator will be fix light on.

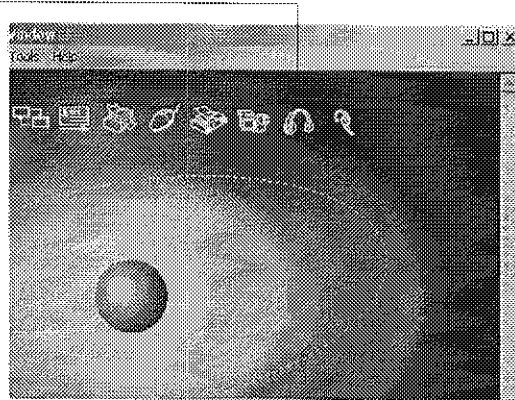
Note: The device did not support “remote control” function when connecting with a Bluetooth AV Transmitter.

3.3.2 To play music via a Bluetooth USB Dongle, please complete AV pairing and then activate intended audio player interface afterward, the music will be transmitted to the speaker automatically.

Note: The Bluetooth USB Dongle should support AVRCP profile to activate :remote control” function.

IVT Driver via USB Dongle

A2DP (Music)



3.4 Cellphone Operation:

- 3.4.1 Check your mobile phone's user guide, find out the paragraphs of Bluetooth Connectivity and follow the instruction to complete pairing with the speaker. If your cellphone support only HANDSFREE profile, please activate connection from the cellphone.
- 3.4.2 Cellphone will always be the top priority, since an incoming/outgoing has been progressed, it interrupts actively and the on-going music will be muted. As soon as the call has been hangs up, the music rebound afterward.
- 3.4.3 First answering to the mobile phone call automatically since an incoming/outgoing has been progressed, it interrupts actively and the on-going music will be muted. As soon as the call has been hangs up, the music rebound afterward.
- 3.4.4 If disconnect and blue indicator blink rapid, you can press the Ply/Pause key ►|| four seconds, and the device will active connect with the last connected Bluetooth device before, the blue indicator fix light on.
- 3.4.5 Press the Accept key ↵ twice, the cellphone will active call the last number, and the on-going music will be muted. As soon as the call has been hangs up, the music rebound afterward.

3.5 Connecting Audio players directly by 3.5mm Audio cable:

- 3.5.1 This speakers equipped a line-in jack to directly connect to audio sources; for instance: Mp3 player, Discman, laptop or other audio players. Please disconnect Bluetooth Connection with audio sources firstly. Plug the 3.5mm Audio cable into the line-in jack and the other end to audio sources, then play music. All functional buttons on the device will be disable as soon as line-in jack has been connected, please operate function from the audio sources directly.

Note: Cellphone will always be the top priority, since an incoming/outgoing has been progressed, it interrupts actively and the on-going music will be muted. As soon as the call has been hangs up, the music rebound afterward.

3.6 2.5 mm External Microphone:

Equipped a Mic-in jack for external microphone, simply plug the connector into the jack and turn the Mic on. Please adjust MICROPHONE tube and position according to locality to increase sound sensitivity.

3.7 Pin code: 「0000」

4. Indications: Blue (B), Green (G)

Operation Mode	Indication	Voice
Pairing	(B) Blink with 0.5 second once	Pairing now
Active link	(B) Blink with 0.2 second once	
Pairing succeeded	(B) Blink with 0.5 second once	Pairing succeeded
Connected	(B) Light fix on	Connected
Disconnected	(B) Blink with 0.5 second once	Disconnected

5. Operation Button and Symbol Definition:

Feature	Button	Conditions
Pairing	Power SW	Pairing now
Pick Up	↵	To Telephone
Hang Up	↵	During Communication
Refuse Answering	↵	Click twice when income calling
Last Call Redial	↵	Quickly click twice
Volume Up	Vol+	During Communication/Music playing
Volume Down	Vol-	During Communication/Music playing
Play	▶▶	Stop or Pause
Pause	▶▶	Playing
Forward	▶▶	Playing
Backward	◀◀	Playing
Active Pairing A2DP (music)	▶▶	Press and hold for four seconds
Active Pairing HSP (headset)	↵	Press and hold for four seconds

6. Certification and Safety Approvals/General Information

6.1 The device is CE, FCC and BQB approved.

6.2 Federal Communication Commission (FCC) Statement

6.2.1 Rule 15.21: You are cautioned that changes or modifications not expressly approved by the party responsible for compliance could void the user's authority to operate the equipment.

6.2.2 Rule 15.105(b): This equipment has been tested and found to comply with limits for a Class B digital device, pursuant to part 15 of the FCC rules. These limits are designed to provide reasonable protection against harmful interference in a residential installation. This equipment generates, uses and can radiate radio frequency energy and, if not installed and used in accordance with the instructions, may cause harmful interference to radio communications. However, there is no guarantee that interference will not occur in a particular installation. If this equipment does cause harmful interference to radio or television reception, which can be determined by turning the equipment off and on, the user is encouraged to try to correct the interference by one or more of the following measures:

- Reorient or relocate the receiving antenna.
- Increase the separation between the equipment and receiver.
- Connect the equipment into an outlet on a circuit different from that to which the receiver is connected.
- Consult the dealer or an experienced radio/TV technician for help.

6.3 Bluetooth is a trade mark owned by Bluetooth SIG, Inc.

7. Caution

7.1 Important information regarding safe and efficient operation. Read this information before using the product. Users are not permitted to make changes or modify the device in any way. Changes or modifications not expressly approved by the party responsible for compliance could void the user's authority to operate the equipment.

7.2 Operation is subject to the following two conditions:

7.2.1 this device may not cause harmful interference, and

7.2.2 this device must accept any interference received, including interference that may cause undesired operation of the device.

7.3 FCC RF Radiation Exposure Statement:

This device and its antenna(s) must not be co-located or operation in conjunction with any other antenna or transmitter.