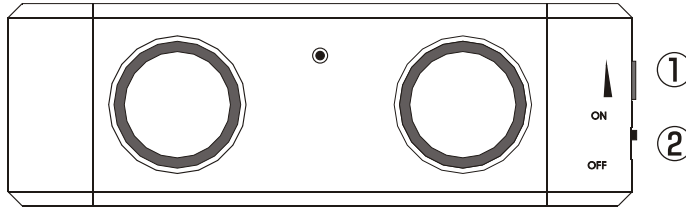


# OPERATION INSTRUCTIONS

## - SPEAKER CONTROLS



Slide the POWER control (2) upwards to turn on the speaker system. The Power/Pairing indicator LED is flashing that means the power is ON and waiting to be connected to your Bluetooth audio source.

### ■ Prepare audio source

#### Using with your Bluetooth mobile phone

The Bluetooth Multimedia speakers can be used with a Bluetooth Mobile Phone (equipped with A2DP-Bluetooth stereo).

1. Enable Bluetooth on your mobile phone (refer to your mobile phone user manual).
2. In the phone's Bluetooth menu, search for devices (device name: JA2).
3. Select **Audio Speaker**.
4. Enter the PIN code "0000".

#### Using with your computer

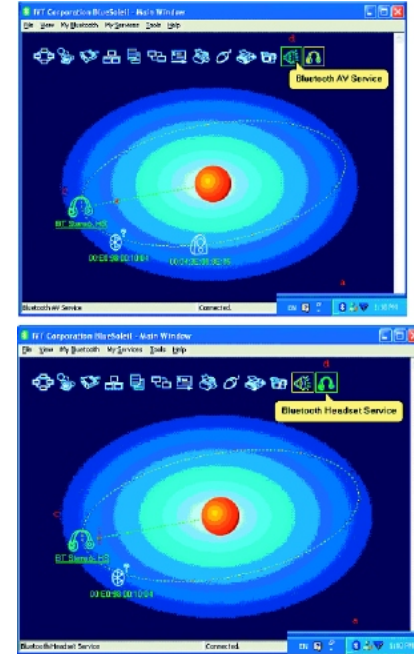
##### IVT BlueSoleil™

To use the IVT BlueSoleil, first you must pair the Bluetooth Multimedia speakers with your computer.

#### Search and connect

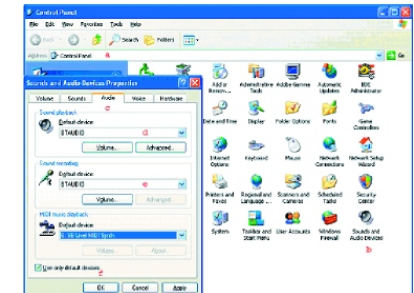
1. Double click the **Bluetooth** icon in the task tray.
2. Select "My Bluetooth/Search Bluetooth Device" in the menu, all Bluetooth devices appear. When search is over, double click on the stereo headset icon and enter pin code "0000", the icon will be highlighted. Click the right button of mouse, select "Connecting" then red dot appear as shooting. This means connection is successful. Please repeat step 2 if connection fails.

**Note:** The IVT BlueSoleil software is not included with your Bluetooth Multimedia speakers.



#### Configuring Windows audio output

1. Open **Control Panel** and double click **Sound and Audio devices**.
2. Select the **Audio** tab.
3. Under **Sound playback**, change the device to **BTAUDIO**.
4. Under **Sound recording**, change the device to **BTAUDIO**.
5. Click **OK**.



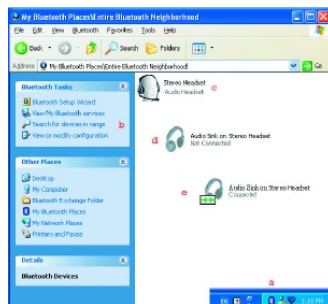
## Widcomm® Bluetooth software

To use the Widcomm Bluetooth software, first you must pair the Bluetooth Multimedia speakers.

**Note:** The Widcomm Bluetooth software is not included with your Bluetooth Multimedia speakers.

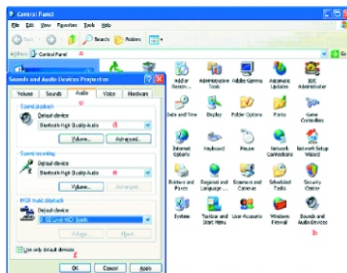
### Search and connect

1. Double click the **Bluetooth** icon in the task tray.
2. Click **Search for devices in range**.
3. Double click the **Stereo Headset** icon. Enter **0000** for pin code.
4. Right click on the stereo headset icon and select **Audio Sink on Stereo Headset** to create a connection shortcut.



### Configuring Windows audio output

1. Open **Control Panel** and double click **Sound and Audio devices**.
2. Select the **Audio** tab.
3. Under **Sound playback**, change the device to **Bluetooth High Quality Audio**.
4. Click **OK**.



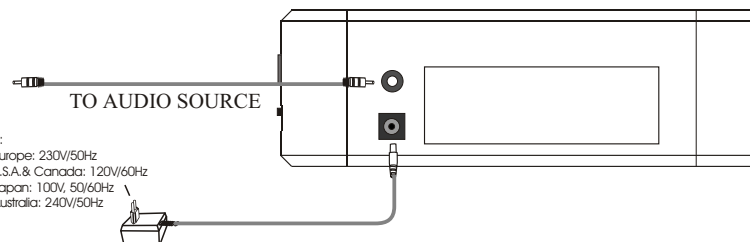
Power/Pairing LED will turn light when the speaker is connected to your Bluetooth audio source successfully. The LED will flash per second if you do not connect to your Bluetooth audio source after 3 minutes that means the speaker is coming into idle status. Please connect again.

Rotate the VOLUME control (1) upwards to increase or upwards to decrease the listening level.

To turn off the speaker system, slide the POWER button (2) upwards.

The power/pairing LED will turn off.

## - CONNECTIONS



Note:  
For Europe: 230V/50Hz  
For U.S.A. & Canada: 120V/60Hz  
For Japan: 100V, 50/60Hz  
For Australia: 240V/50Hz

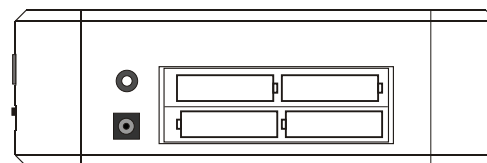
\* Connect the AC power cord to a suitable AC power outlet. The shape of the plug may differ from that in the fig. to conform to local condition.

1. Insert one plug of the audio cable into the AUDIO IN jack on the rear of the speaker. Then insert the other one into the headphone or line output socket of the audio source.
2. Insert the DC plug of the adaptor into the DC jack of the speaker. Then connect the power plug to a suitable AC outlet.

\* Disconnect the power plug of the adaptor from the AC outlet when the system is left unused for a long period of time.

*When LINE IN and Bluetooth are connected at the same time, the LINE IN will be priority.*

## - BATTERY INSTALLATION



**BATTERIES:** AA x 4pcs (not included)

Please remove the batteries from the compartment when the system is left unused for a long period of time.

Note:

- ◆ Changes or modifications not expressly approved by the party responsible for compliance could void the user's authority to operate the equipment.
- ◆ This equipment has been tested and found to comply with the limits for a Class B digital device, pursuant to part 15 of the FCC Rules. These limits are designed to provide reasonable protection against harmful interference in a residential installation. This equipment generates, uses and can radiate radio frequency energy and, if not installed and used in accordance with the instructions, may cause harmful interference to radio communications. However, there is no guarantee that interference will not occur in a particular installation.  
If this equipment does cause harmful interference to radio or television reception, which can be determined by turning the equipment off and on, the user is encouraged to try to correct the interference by one or more of the following measures:
  - Reorient or relocate the receiving antenna.
  - Increase the separation between the equipment and receiver.
  - Connect the equipment into an outlet on a circuit different from that to which the receiver is connected.
  - Consult the dealer or an experienced radio/TV technician for help.