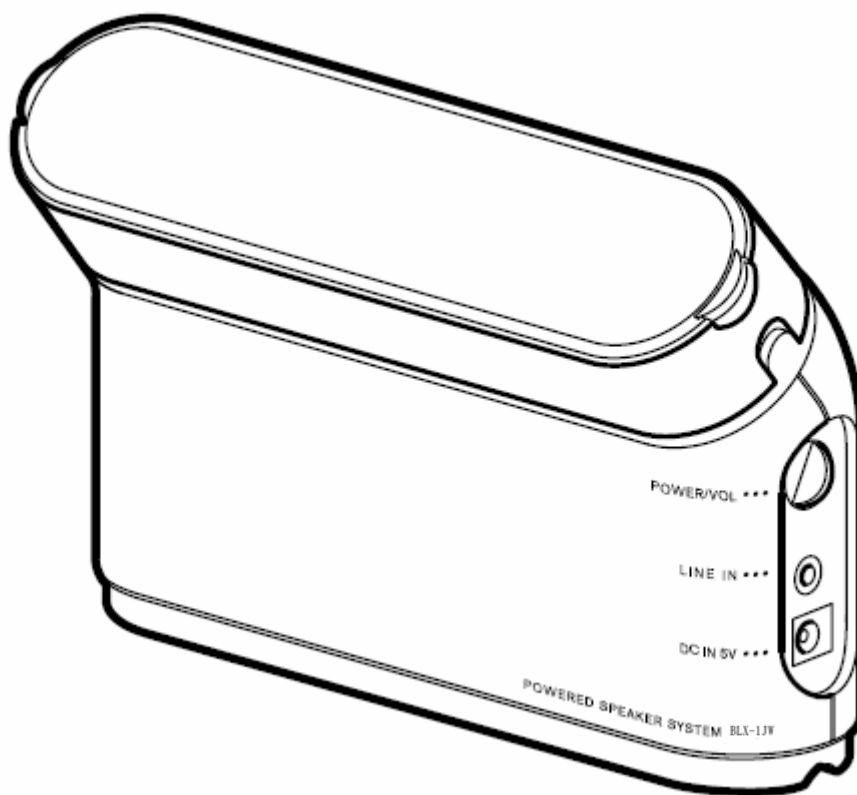


Preliminary

BLX-1JW

Bluetooth Speaker

User Manual



Feature

- Super Dimensional Horn
- Twin Port Double Base Reflex
- Free Layout for Free Lifestyle
- One Box and two power supply
- Audio cable mounted on container
- Bluetooth Receiver wire free

Specification

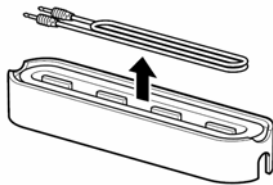
- Input Level : 400mV
- Input Impedance : 75K Ω
- Power Output : 1.5W + 1.5W (4 Ω)
- Frequency Response : 100Hz ~ 50KHz
- Speaker : 3 cm x 2
- Dimension : 170(W) X 123.5(H) X 54(D) mm
- Weight : 400g (body)

Accessory on box

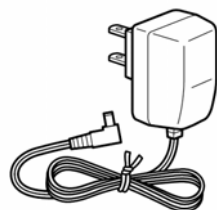
- BLX-1JW Body



- Analog Connect Cable

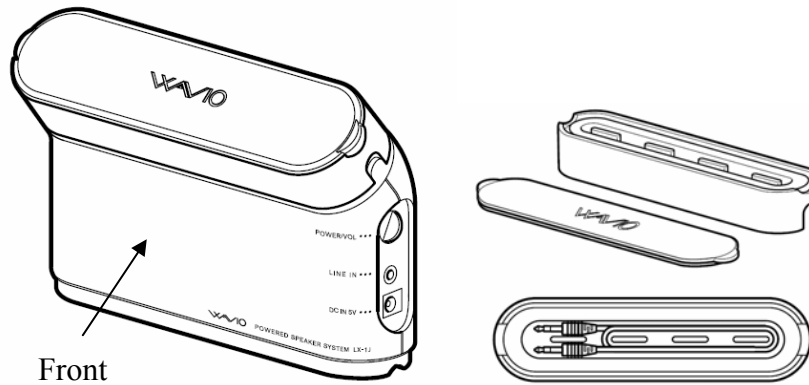


- AC Adapter

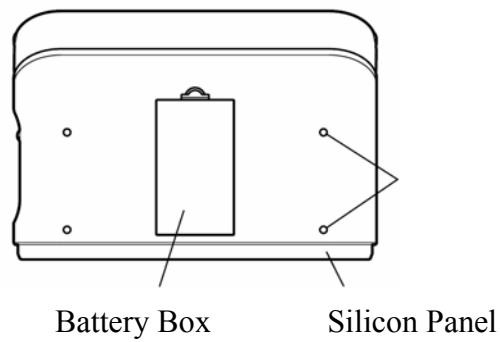


Product View

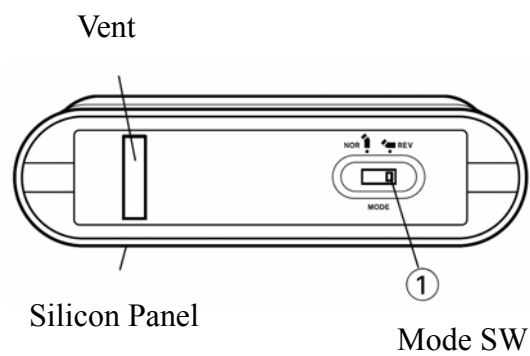
- General View



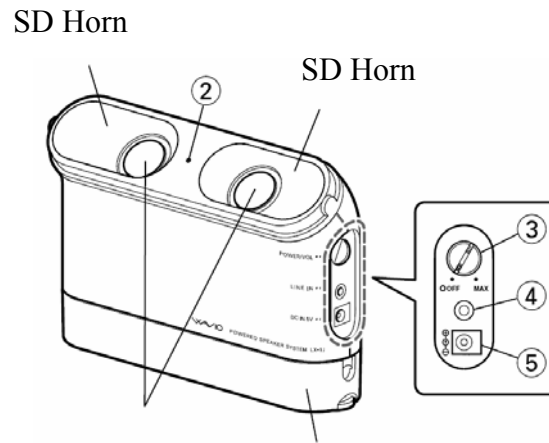
- Back View



- Bottom View



- Slant View



① MODE

Change the Right/Left sound to reverse.

② INDICATOR

Indicate Power/Paring status

③ POWER/VOL

Open and close the power, adjust volume level

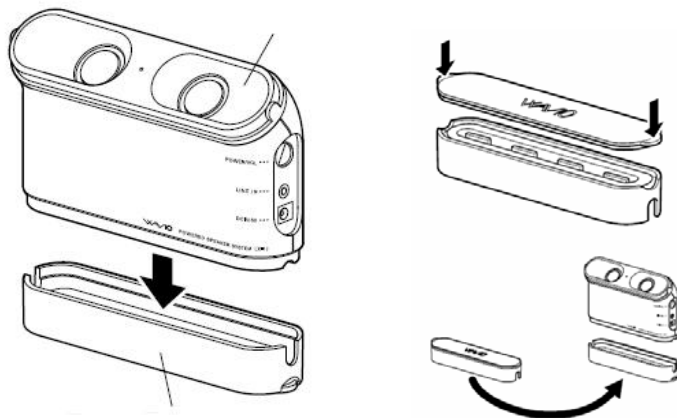
④ LINE IN

Audio Cable insert port

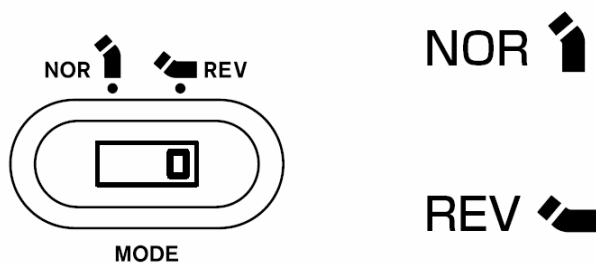
⑤ DC IN 5V

Adaptor DC Line insert port

■ Installation for Different Use Purpose



■ MODE Select



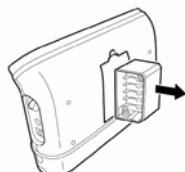
■ CONNECTIONS

1. Battery installation

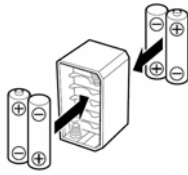
1.1. Open the battery cover on the back of this device



1.2. Extract the battery container



1.3. Insert 4 batteries into the battery container with correct direction

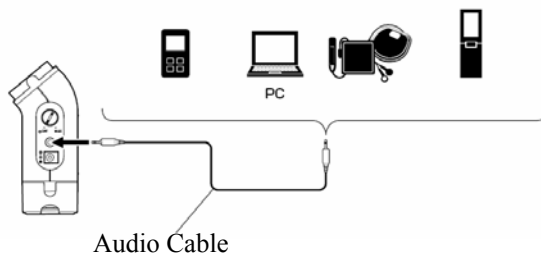


1.4 Push the battery container back



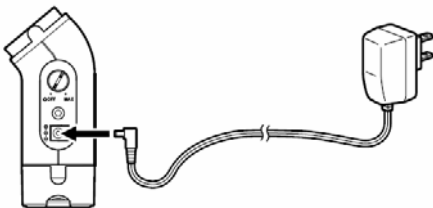
2. Audio Cable connection

Insert the 3.5mm plug of the audio cable into the headphone or line output socket of the audio source.



3. Power adaptor connection

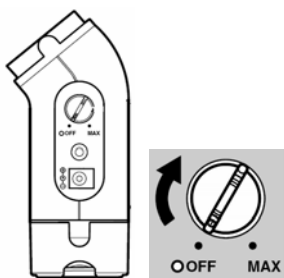
Insert the DC plug of the adaptor into the DC IN socket. Then Connect the AC power plug to a suitable AC outlet.



* Disconnect the AC power plug from the AC outlet when the system is left unused for a long period of time.

■ OPERATIONS

1. Turn the knob clockwise to the power “on”



2. Continue turn the knob clockwise or anti-clockwise to increase or decrease the listening level.



3. Turn the knob anti-clockwise to the OFF position for the power “off”



■ Prepare audio source

■ Using with your Bluetooth mobile phone

The Bluetooth Multimedia speakers can be used with a Bluetooth Mobile Phone (equipped with A2DP/AVRCP/H5P/HFP-Bluetooth stereo).

1. Enable Bluetooth on your mobile phone (refer to you mobile phone user manual)
2. In the phone’s Bluetooth menu, search for devices (device name:JA2).
3. Select **Audio Speaker**.
4. Enter the PIN code “0000”.

■ Using with your computer

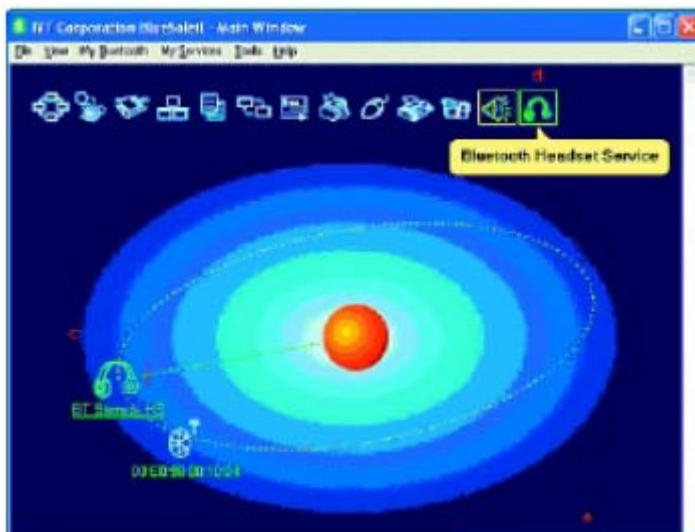
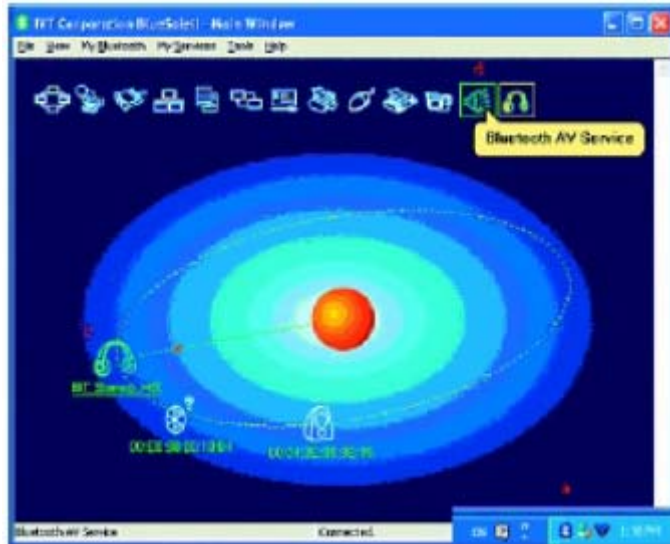
IVT BlueSoleil™

To use the IVT BlueSoleil, first you must pair the Bluetooth Multimedia speakers with you computer.

■ Search and connect

1. Double click the Bluetooth icon in the task tray.
2. Select “My Bluetooth/Search Bluetooth Device” in the manual, all Bluetooth

devices appear. When search is over, double click on the stereo headset icon and enter pin code “0000”, the icon will be highlighted. Click the right button of mouse, select “Connecting” then red dot appear as shooting. This means connection is successful. Please repeat step 2 if connection fails.



Note: The IVT BlueSoleil software is not included with your Bluetooth Multimedia speakers.

■ Configuring Windows audio output.

1. Open Control Panel and double click Sound and Audio devices.
2. Select the Audio tab.
3. Under Sound playback, change the device to BTAUDIO.
4. Under Sound recording, change the devices to BTAUDIO.
5. Click OK.



■ Configuring Windows audio output

1. Open Control Panel and double click Sound and Audio devices.
2. Select the Audio tab.
3. Under Sound playback, change the device to Bluetooth High Quality Audio.
4. Click OK.

Power/Pairing LED will turn light when the speaker is connected to your Bluetooth audio source successfully. The LED will flash per second if you do not connect to your Bluetooth audio source after 3 minutes that means the speaker is coming into idle status. Please connect again.

■ Statements

Changes or modifications not expressly approved by the party responsible for compliance could void the user's authority to operate the equipment

Note: This equipment has been tested and found to comply with the limits for a Class B digital device, pursuant to part 15 of the FCC Rules. These limits are designed to provide reasonable protection against harmful interference in a residential installation. This equipment generates, uses and can radiate radio frequency energy and, if not installed and used in accordance with the instructions, may cause harmful interference to radio communications. However, there is no guarantee that interference will not occur in a particular installation.

If this equipment does cause harmful interference to radio or television reception, which can be determined by turning the equipment off and on, the user is encouraged to try to correct the interference by one or more of the following measures:

--Reorient or relocate the receiving antenna.

- Increase the separation between the equipment and receiver.
- Connect the equipment into an outlet on a circuit different from that to which the receiver is connected.
- Consult the dealer or an experienced radio/TV technician for help.

Industry Canada

This Class B digital apparatus complies with Canadian ICES-003.

Cet appareil numérique de la classe B est conforme à la norme NMB-003 du Canada.