

KD-R310

CD Receiver with Front AUX

Headunits



MP3/WMA MOS-FET 50W x 4 20W x 4 RMS



Recommended Features

Ready for Bluetooth® Adapter Phone Book Access Profiles Switching 2 Cell Phones Front AUX AUDIO USB SAT Radio Ready HD Radio® Ready Steering Wheel Remote Ready Hi-Volt Line Output

Key Benefits

The Front AUX provides easy connection with digital audio players and other external devices for playing your favorite songs on board. The unit offers smooth and easy operation using the menu key and the volume knob. The Separated Variable-Color lets you customize the keys and display colors from 30,000 x 30,000 combinations. Enjoy superior sound delivered by 24-bit DAC and MOS-FET power amp. The 3-band parametric iEQ lets you fine tune the sound to your taste. You can also enjoy Bluetooth® Wireless Technology, HD Radio®, and SAT Radio with optional devices.

Separated Variable-Color

Over 30,000 colors are available to match your car's illumination. Separate colors can be set for the keys and display, providing stylish coordination and easier operation.



Over 30,000 Display Zone X Over 30,000 Control Zone

J-BUS Terminal

You can connect JVC's optional adapters to this terminal. Available functions depend on the headunit.



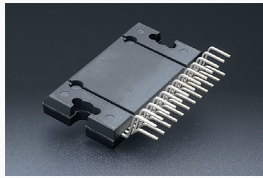
MOBILE ENTERTAINMENT

KD-R310 CD Receiver with Front AUX

*MOS-FET Power Amp

Enables highly faithful sound reproduction with distortion-free pure signal pre-output.

MOS-FET 50W x 4



*Front AUX Input

Easy connection for digital audio players and other devices.



*Ready for Bluetooth® Adapter

Bluetooth® Wireless Technology is available with an optional adapter (KS-BTA200)*, for hands-free calling and audio streaming.

* Not available in some countries. Available functions depend on the cell phone.



*HD Radio® Ready

HD Radio® available with an optional KT-HD300 tuner.



HD Radio®
READY

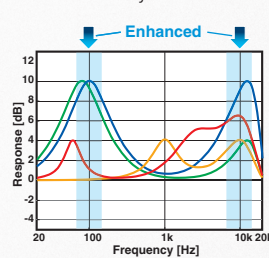
*SAT Radio Ready

Compatible with XM/Sirius Satellite Radio. (separate tuners required)

**SAT
RADIO
READY**

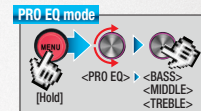
*3-Band Parametric iEQ

Adjusts the center frequency, bandwidth and levels at each of 3 bands. Plus 5 factory and 1 user EQ presets. With Pro mode, the EQ can customize the sound for your ears.



Control Range	Bass: 60Hz, 80Hz, 100Hz, 200Hz
	Mid-range: 500Hz, 1kHz, 1.5kHz, 2.5kHz
	Treble: 10kHz, 12.5kHz, 15kHz, 17.5kHz
Level	-6 ~ +6dB
Q (band with)	0.75 ~ 2.0Q

FLAT
NATURAL
DYNAMIC
VOCAL BOOST
BASS BOOST
USER



Key Specifications

Maximum Power Output	50W x 4
Continuous Power Output (RMS)	20W RMS x 4 Channels at 4Ω ≤
* Total Harmonic Distortion	1.0% THD* + N
Line Pre-Output Terminals	1 (Rear/Subwoofer Selectable)
Subwoofer Output with Level/Frequency Control	✓ (Rear/Subwoofer Selectable)
Line Output Level	2.5V
Subwoofer Output Level	2.5V
Subwoofer Gain Control	INF - 0dB**
Load Impedance	4Ω (4 - 8Ω allowable)
Line Output Impedance	1kΩ

** MUTE / -14dB / -12dB / -10dB / -8dB / -6dB / -4dB / -2dB / 0dB

Dimensions (W x H x D)		
Installation Size	7 3/16" x 2 1/16" x 6 5/16"	182 x 52 x 160 mm
Panel Size	7 7/16" x 2 5/16" x 1/4"	188 x 58 x 5.6 mm
Detachable Face Plate	6 3/4" x 1 13/16" x 3/4"	170 x 46 x 18.8 mm

Connections

