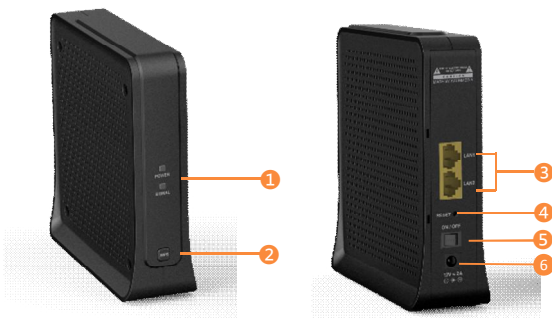


# AR2040

## Quick Installation Guide

### 1. AR2040 overview



- ① LED (Power, Signal)
- ② WPS Button
- ③ Ethernet Ports
- ④ Factory Reset Button (press 5~6 seconds)
- ⑤ Power On/Off Button
- ⑥ Power Connector

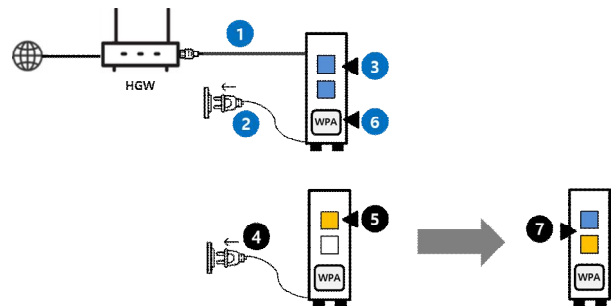
### LED Scenario

The light on the front side of your AR2040 gives you information about the AR2040's operation.

LED	Color	Blink	On	Off
Power	Red		Reboot Restore	
	Yellow	Booting	Complete Booting	
	Blue		Connect to Internet	Disconnect
Signal	Red			
	Yellow	Grouping (Slave) Join	Complete Grouping (slave) Complete Join	
	Blue	Grouping	Complete Grouping (master)	

Note : The Signal LED of the AR2040 indicates solid yellow when it is connected as the slave device, whereas the Signal LED of the AR2040 indicates solid blue when it is connected as the master device.

### 2. Quick Mesh Setup with WPS



**Step 1.** Connect one of the AR2040(Master) to your gateway with the Ethernet cable.

**Step 2.** Plug your AR2040(Master) to a power socket

**Step 3.** Check that the Power LED changes to Blue, Check that the Signal LED changes to Blue.

**Step 4.** Place additional AR2040(Slave) at a distance of around three meters from the working AR2040 connected to your home gateway and plug the AR2040 into a power socket

**Step 5.** Check that the Power LED solid to Yellow.

**Step 6.** Press the WPS button on AR2040(Master) for 2-3 seconds ( In AR2040 where Signal LED is BLUE)

**Step 7.** Check that the Power LED on the satellite AR2040 changes to Blue. Check that the Signal LED on the satellite AR2040 turns yellow.

**Step 8.** Place the AR2040 where you need but it should be position which Signal LED shows solid yellow.

Note: You'll get the best signal when it is in an open space like on a shelf or a table.

## AR2040 Wi-Fi Extender



### 3. Mesh Setup with Mobile App

#### Step 1. Download the Kaon WiFi App

Scan the unique QR code below, or go to Google Play or the Apple App Store to download the **Kaon WiFi app**. Install the app on a compatible iPhone or Android smartphone.





Follow the step-by-step instructions on the App to connect your home gateway to the AR2040 unit.

#### Step 2. Launch the WiFi app. Select **Set up manually**

#### Step 3. Go to **Wi-Fi settings** to connect to your network (AR2146 Wi-Fi network name)

**Step 4.** Tap **Find my device**, enter your login information printed on a label on the bottom of the AR2040 and tap Login. You can see the dash board of the app after you successfully set up your Wi-Fi network.

**Step 5.** Add AR2040 to an existing Wi-Fi network, tap  icon on the top right hand corner of the dashboard. Tap “+” to add new AR2040 and scan QR code printed on a label on the bottom of the AR2040, then tap **Create Mesh**.

**Step 6.** Customize the network name and password  
Tap  icon on the top right hand corner of the dashboard, and select the Wi-Fi settings to create your own network name (SSID) and password.

Note: If your device disconnects from the Wi-Fi network, view the available Wi-Fi network and then choose the new network name (SSID) and enter the new password.

### 4. Accessing your AR2040 from WebUI

#### Step 1. Access the web-based setup page

- Connect your PC to the working AR2040 (master mode)’s wireless network (SSID).
- WebUI address, ID and the password are located at the label at the bottom of your device.
- Launch a web browser (Internet Explorer or Chrome).
- Enter <http://kaonmesh> or <http://192.168.50.1> ( is the last 4 digits of the working AR2040’s serial number) in the address bar, then press.
- Enter the default user name, admin and password, password in the fields.

Note : You can view and change your Wi-Fi name (SSID) and password, and see all your AR2040 configured as a mesh network (master and slave mode) in your Wi-Fi.

Note : You can view and change your Wi-Fi name (SSID) and password, and see all your AR2040s configured as a mesh network in your Wi-Fi.

#### KAONMEDIA Co., Ltd.

KAONMEDIA Building, 884-3,  
Seongnam-daero, Bundang-gu,  
Seongnam-si, Gyeonggi-do,  
463-839, South Korea

© 2019 KAONMEDIA Co., Ltd. KAONMEDIA and the KAONMEDIA Logo are trademarks of KAONMEDIA Co., Ltd. Other brands are trademarks or registered trademarks of their respective holders.

This document is for informational purposes only. Information and views expressed in this document may change without notice. For technical support and other information, please contact your sales representative or contact us by email.

[www.kaonmedia.com](http://www.kaonmedia.com) | [sales\\_support@kaonmedia.com](mailto:sales_support@kaonmedia.com)

## Technical Specifications

### • Wireless Characteristics

- 4x4 5GHz 802.11ac
- 2x2 2.4GHz 802.11n
- 4 Spatial Streams
- Wave 2 (MU-MIMO)
- Beamforming
- High-power transmit for maximum coverage

### • 5GHz Wireless Operating Channels

- 5 GHz UNI bands (5.15-5.25 GHz, 5.725 GHz-5.850 GHz bands)
- 20, 40 and 80 MHz bandwidths supported

### • Wireless Security

- WPA2 / WPA / AES / WEP-128 / WEP-64
- Push-button Wireless setup (WPS) and reset support

### • Processor

- 900 MHz processor

### • Memory

- 128MB Flash and 256MB RAM

### • Antenna

- Four (4) high performance internal antennas

### • Ports

- Two (2) RJ45 Gigabit Ethernet (10/100/1000Mbps) LAN ports

### • LEDs

- Two (2) LEDs : power / signal status

### • Management

- TR-069 management client
- Local web access
- Mobile application support (optional)

### • Operating Environment

- Operating temperature 0° to + 40°C
- Relative humidity 8% to 95%; Non-condensing

### • Regulatory Certification

- Wi-Fi Alliance®
- Wi-Fi CERTIFIED EasyMesh™
- CE
- RoHS
- WEEE
- FCC
- UL

## Physical Specifications

- Dimensions : 160 x 160 x 50 mm  
(6.2 x 6.2 x 1.9 in)

## Accessories

- One (1) 12V/1.5A power adapter
- One (1) Ethernet cable
- Quick start guide

### KAONMEDIA Co., Ltd.

KAONMEDIA Building, 884-3,  
Seongnam-daero, Bundang-gu,  
Seongnam-si, Gyeonggi-do,  
463-839, South Korea

© 2019 KAONMEDIA Co., Ltd. KAONMEDIA and the KAONMEDIA Logo are trademarks of KAONMEDIA Co., Ltd. Other brands are trademarks or registered trademarks of their respective holders.

This document is for informational purposes only. Information and views expressed in this document may change without notice. For technical support and other information, please contact your sales representative or contact us by email.

www.kaonmedia.com | sales\_support@kaonmedia.com

## AR2040 Wi-Fi Extender



### FCC Part 15.105 statement

This equipment has been tested and found to comply with the limits for a Class B digital device, pursuant to part 15 of the FCC Rules.

These limits are designed to provide reasonable protection against harmful interference in a residential installation. This equipment generates, uses and can radiate radio frequency energy and, if not installed and used in accordance with the instructions, may cause harmful interference to radio communications. However, there is no guarantee that interference will not occur in a particular installation. If this equipment does cause harmful interference to radio or television reception, which can be determined by turning the equipment off and on, the user is encouraged to try to correct the interference by one or more of the following measures:

- Reorient or relocate the receiving antenna.
- Increase the separation between the equipment and receiver.
- Connect the equipment into an outlet on a circuit different from that to which the receiver is connected.
- Consult the dealer or an experienced radio/TV technician for help.

### FCC Part 15.21 statement

Any changes or modifications not expressly approved by the party responsible for compliance could void the user's authority to operate this equipment.

### RF Exposure Statement (MPE)

The antenna(s) must be installed such that a minimum separation distance of at least 20 cm is maintained between the radiator (antenna) and all persons at all times. This device must not be co-located or operating in conjunction with any other antenna or transmitter

#### KAONMEDIA Co., Ltd.

KAONMEDIA Building, 884-3,  
Seongnam-daero, Bundang-gu,  
Seongnam-si, Gyeonggi-do,  
463-839, South Korea

© 2019 KAONMEDIA Co., Ltd. KAONMEDIA and the KAONMEDIA Logo are trademarks of KAONMEDIA Co., Ltd. Other brands are trademarks or registered trademarks of their respective holders.

This document is for informational purposes only. Information and views expressed in this document may change without notice. For technical support and other information, please contact your sales representative or contact us by email.

[www.kaonmedia.com](http://www.kaonmedia.com) | [sales\\_support@kaonmedia.com](mailto:sales_support@kaonmedia.com)