

# User's Guide

**Smart watch**

**Model No.: QSW-508-BKSL**

**FCC ID: 2ACAZQSW-508-BKSL**

**Trade Name: QUO**



---

## Contents

<b>1</b>	<b>THE BASICS.....</b>	<b>4</b>
1.1	OVERVIEW .....	4
1.2	SAFETY WARNINGS AND NOTICES .....	4
1.3	GENERAL ATTENTION .....	5
1.4	NOTICES WHEN USING YOUR SMARTWATCH .....	6
1.5	CHARGING YOUR SMARTWATCH.....	7
<b>2</b>	<b>GETTING STARTED .....</b>	<b>9</b>
2.1	EQUIPMENT PARTS DIAGRAM.....	9
2.2	KEY EXPLANATIONS.....	11
2.3	TURNING YOUR SMARTWATCH ON AND OFF .....	12
2.4	USING THE TOUCH SCREEN .....	13
2.5	BASIC FUNCTIONS .....	13
2.6	CONNECTING TO THE MOBILE DEVICES .....	16
2.7	LOCKING & UNLOCKING YOUR SMARTWATCH .....	17
2.8	NOTIFICATION .....	18
2.9	MAKING A CALL.....	19
2.10	WATCH MANAGER .....	19
<b>3</b>	<b>FUNCTIONAL MENU .....</b>	<b>21</b>
3.1	DIALLER.....	22
3.2	CONTACTS .....	22
3.3	CAMERA .....	23

---

<b>3.4 GALLERY</b> .....	<b>24</b>
<b>3.5 MEDIA CONTROL</b> .....	<b>25</b>
<b>3.6 AITALKANDROID</b> .....	<b>25</b>
<b>3.7 STOPWATCH</b> .....	<b>26</b>
<b>3.8 TIMER</b> .....	<b>26</b>
<b>3.9 TODAY'S SCHEDULE</b> .....	<b>27</b>
<b>3.10 VOICE MEMO</b> .....	<b>27</b>
<b>3.11 WEATHER</b> .....	<b>28</b>
<b>3.12 SETTINGS</b> .....	<b>28</b>
<b>3.13 NOTIFICATIONS</b> .....	<b>31</b>
<b>3.14 PEDOMETER</b> .....	<b>31</b>
<b>3.15 FIND MY DEVICE</b> .....	<b>32</b>
<b>3.16 CALL LOG</b> .....	<b>32</b>
<b>3.17 MUSIC</b> .....	<b>33</b>
<b>3.18 COMPASS</b> .....	<b>33</b>
<b>3.19 TELECAMERA</b> .....	<b>34</b>
<b>3.20 SWFLASHLIGHT</b> .....	<b>35</b>
<b>3.21 GESTURES CONTROL</b> .....	<b>35</b>
<b>4 CONNECTING TO A COMPUTER</b> .....	<b>36</b>
<b>5 FAQs AND SOLUTIONS</b> .....	<b>37</b>
<b>6. WARNINGS</b> .....	<b>39</b>

---

# 1 The Basics

## 1.1 Overview

Thank you for choosing the Smart wearable devices. After reading this guide you will be able to fully master the use of your watch and appreciate all its functions and ease of use.

Not only does the smartwatch provide you with basic call functions such as call Register, but also with many practical functions and services, to improve the time you spend working and playing.

The availability of some services and features described in this manual depends on the network and your subscription. Therefore, some menu items may not be available in your smartwatch. The shortcuts to menus and features may also vary from watch to watch.

Our company reserves the right to revise this manual content without prior notice.

## 1.2 Safety warnings and notices

Before using your mobile phone and smartwatch, read and understand the following notices carefully to

---

ensure you will use it safely and properly.

### **1.3 General attention**

- Only the battery specified by our company should be used in your smartwatch. Other products might result in battery leakage, overheating, fire or explosion.
- To avoid your smartwatch malfunctioning, or catching fire, please do not violently impact, jolt or throw your smartwatch.
- Please do not place the smartwatch in a microwave oven or high-pressure equipment. Otherwise it could lead to unexpected accidents such as damage to the circuitry or fire hazard.
- Please do not use your smartwatch near flammable or explosive gases, otherwise it could cause malfunction of your phone or fire hazard.
- Please do not subject your smartwatch to high temperatures, high humidity or dusty places; otherwise this may lead to the malfunction of your smartwatch.
- To avoid your smartwatch falling and malfunctioning or being damaged, please do not place it on uneven or unstable surfaces.

---

#### **1.4 Notices when using your smartwatch**

- Please do not subject the LCD to impact or use the screen to strike things, as this will damage the LCD board and cause leakage of the liquid crystal. There is a risk of blindness if the liquid crystal substance gets into the eyes. If this occurs rinse eyes immediately with clear water (under no circumstances rub your eyes) and go immediately to a hospital for treatment.
- Do not disassemble or modify your smartwatch, as it will lead to damage to the smartwatch such as battery leakage or circuitry failure.
- Please do not use needles, pen tips, or other sharp objects on the keypad as this may damage the smartwatch or cause it to malfunction.
- The battery has a limited service life. The remaining life gets shorter as the times of charging increase. If the battery becomes feeble even after the charging, this indicates the service life is over and you have to use a new battery.
- When installing the battery, do not use force or pressure, as this will cause the battery to leak, overheat, crack and catch fire.
- If the battery overheats, changes color, or

---

becomes distorted during use, charging, or storage, please stop using and replace it with a new battery.

- Please do not continuously charge for more than 24 hours.

### **1.5 Charging your smartwatch**

- Connect the connector of USB to the smartwatch. The battery level indicator flashes on the screen. Even if the smartwatch has been turned off, the charging image still appears, indicating that the battery is being charged. If the smartwatch is overused when the current is insufficient, it may take longer time for the charging indicator to appear on the screen after the charging begins.
- When the battery level indicator does not flash and indicates the battery is full, this indicates the charging has been completed. If the smartwatch is off during charging, the charging being completed image also appears on the screen. The charging process often takes 3 to 4 hours. During the charging, the battery, smartwatch and USB gets warm, this is a normal phenomenon.
- Upon the completion of charging, disconnect the

---

USB, and from the smartwatch.

Notes:

- During charging, the smartwatch must be placed in well-ventilated environment of +5°C ~ +40°C. Always use the USB supplied by your smartwatch manufacturer. Using an unauthorized USB might cause danger and invalidate the authorization and warranty clauses for your smartwatch.
- Make sure the battery has been installed before charging. It is best not to remove the battery while charging.
- Upon completion of charging, disconnect the USB from your smartwatch and the power supply.

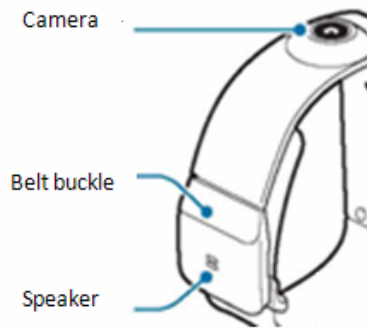
*If you have not disconnected the USB from your **smartwatch** and the power supply, the charger will continue to charge the battery after about 5 to 8 hours when the batter level decreases substantially. We advise you not to do like this, as it lowers your phone performance and shortens your **smartwatch** life(Not Applicable)*



## 2 Getting Started

### 2.1 Equipment parts diagram





Items supplied and available accessories with the device may vary by region or service provider.

- Accompanying articles designed specifically for the device, which may not be compatible with other devices.
- Design and specifications are subject to change without notice.
- You can purchase additional accessories from your local dealer. Before buying make sure they are compatible with the device.
- Other accessories may not be compatible with your device.

### Worn equipment

1 Loosen the buckle



- . Don't hurt the nails when loosen your belt buckle.
- . Don't excessive bending strap, otherwise it will damage equipment.

2. Open the buckle and through the bolt will don't to your wrist strap.



3. Press the buckle, until a click is heard.



### 2.2 Key explanations

Key	Explanations
Power key	<ul style="list-style-type: none"><li>● Hold down this key to turn your smartwatch off and on.</li><li>● Press this key In other applications</li></ul>

---

	<p>to return to the clock screen.</p> <ul style="list-style-type: none"><li>● Generally, press this key to lock the mobile phone.</li><li>● shut down the smartwatch by press this key for about 10 seconds or restart smartwatch by press this key for about 15 seconds.</li></ul>
--	---

### 2.3 Turning your smartwatch on and off

To turn on the phone, hold down the **POWER key** on the right; to turn off the phone, hold down the **POWER key and select power off.**

Hold down the power button for a few seconds to open the equipment





## 2.4 Using the touch screen

Your smartwatch provides **many** touch keys in the Main screen. Meanwhile please follow the instructions:

- Do not touch the screen with wet hands.
- Do not touch the screen with great forces.
- Do not touch the screen with metallic or conductive objects.

## 2.5 Basic functions

The home screen is the beginning of all applications. There are clock shortcuts, applications, and others. Click on the screen to start the



application.

The main screen has multiple panels. To view other panels, swipe left or right.

On the main screen or application fast sliding to the left or right to view the other panels



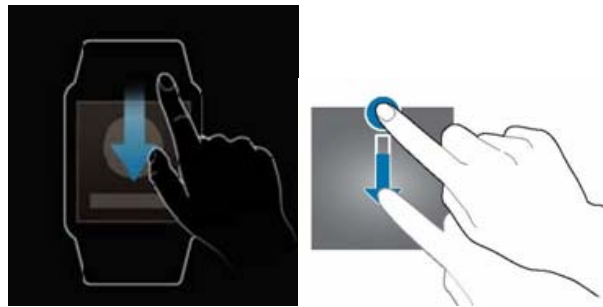
---

Clock: Long press the clock screen until there is a shock, and then slide to the left to the right to select your desired clock interface.



View Recent Tasks: Double-click on the clock screen to can see the recent active tasks.

Return to the previous screen: Slide down from the top of the screen to return to the previous screen interface.



---

Quick access to the camera: Slide down in the clock screen from the top of the screen to enter the camera.

Quick access to dialing: Slide up in the clock screen from the bottom of the screen to enter dialer.

## 2.6 Connecting to the Mobile devices

Connect your smartwatch to another mobile device, so that you can use the various functions on the mobile devices. To connect the smartwatch to another mobile device, you can turn on Bluetooth to connect to mobile devices with Watch Manager.







The Watch Manager is installed on a mobile device, and then turn on Bluetooth of both smartwatch and mobile device .Once you start Watch Manager, the mobile device will scan smartwatch and then connect it. After connecting to a mobile device, you can use part of the application on a mobile device. (Note: Please contact your dealer to get Watch Manager.)

## **2.7 Locking & Unlocking your smartwatch**

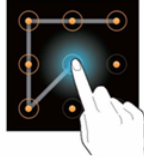
When not in use, please lock the device to avoid unnecessary operations。 Press the power button on the screen to turn off the screen and make the device go into lockdown mode If the device is not used within a specified period of time, it will be automatically locked. Press the power button to unlock the device.You can also set smartwatch protection. If you have selected this function, you must draw unlocking pattern each time you turn on

---

your smartwatch, to unlock the smartwatch and then make or answer calls. You may clear the unlocking pattern (see “Safety settings”). In this case, the unauthorized use of your smartwatch cannot be protected.

Use design locking function to avoid others to use or access to personal data and information stored in the device.

In the application on the screen, click on the set - privacy lock - design, connection of four or more by drawing a pattern, and then draw the design for confirmation again.



## 2.8 notification

Once the smartwatch is connected to the mobile device and the mobile device is targeted, you can receive notifications, such as missed calls or new messages.

Upon receipt of notification, click on the icon in the upper right corner of the screen to view the details.

To view the notification history, slide to the application on the home screen, and then click Apps

---

→ Notifications to view the details.

## **2.9 Making a call**

On the application screen, tap Dialler icon to enter the dial pad, enter the number and then dial;

Choose a contact to see the details, and then click the number to dial.

Enter the call log interface, click on a contact record to see the details, and then click the icon to dial back.

## **2.10 Watch manager**

Using this application, you can connect to a mobile device, customize your device settings and applications, and use applications of the connected mobile devices.

Click Watch Manager on the application screen from a mobile device connected to configure device settings.

- You can see the remaining battery and charge state at the back of the name of the connected device.
- Click on the smartwatch connected, you can modify the Bluetooth name of the smartwatch, but also to see some basic information about the smartwatch.

- 
- Click on the clock, change the clock type from all.
  - Click on the Apps to see the program menu, enter an item may to see related settings.
  - Click on the gallery to select transmission modes, manual, automatic transmission, and immediately transmit while charging.
  - Click the Remote File Transfer Manager, display the device's memory card content, you can download the file to your connected mobile device, or delete a file.
  - Telecamera equipment needs to be used with a remote camera, open search others, and then connect to the remote camera.
  - Settings, it can be related to configure the device.
  - Gesture Control: Select the program, draw a simple gesture, and then draw the gesture gestures in the smartwatch to make mobile devices into the corresponding application.
  - Sync: After selecting synchronization options in the mobile device ,smartwatch can sync some data and notifications from the mobile device , such as missed calls, unread messages, contacts, time and language, but also allows the mobile devices to use

---

application in smartwatch, such as a phone call.

- Help menu provides user guide of smartwatches and mobile devices, which helps you quickly understand and use theme.

### **3 Functional Menu**

(※The following features depends on specific models)

You can add multiple applications in home screen. To view other programs, swipe left or right.

- Add Home Screen Shortcut menu: Click on the Apps icon to enter all the applications screen, press until you can drag an application icon, then drag the icon to the home screen (One home screen contains four shortcut icons);
- Deleting the shortcut icon on the home screen: Long press an icon on the home screen so that you can drag onto the top right of the screen where there is a delete icon.
- Add Home screen pages: Long press an icon on the home screen so that you can drag and then drag the icon onto the top left where there is an added

---

page icon .You can automatically add the new shortcut icon to the new page. (You can add up to seven home screen pages)

- Delete one home screen page: You can delete a home screen page by deleting all the shortcut icon on the screen.

### **3.1 Dialler**

When the smartwatch has synchronized with the connected mobile device,you can open the dial pad and call.

Note: Make sure to turn on synchronization in Watches Management application before you use this feature.

### **3.2 Contacts**

You can view contacts on a contacted mobile device by this application.

Click one item to enter a contact details screen, click on the contact's number to call the contact directly.

Note: Make sure to turn on synchronization in Watches Management application before you use this

---

feature.

### **3.3 Camera**

Your smartwatch provides the camera and video recorder features.

You can select the Camera icon from the application screen, you can also slide down from the clock interface to enter the application.

#### **3.3.1 Taking pictures**

Click on the screen the viewfinder. It says that the picture has been taken when the orange box appears around.

Click on the icon on the top right corner of the camera to set the pictures: exposure, color effects, shooting mode, white balance, camera mode, preview size, photo size, and restore the default and so on.

#### **3.3.2 Recording video**

Click the icon in the upper left corner of the camera to switch to video mode, you can start recording by clicking on the viewfinder screen. To stop recording, tap the screen again.

Click on the icon in the upper right corner of

---

the camera to set video: exposure, color effects, shooting mode, white balance, camera mode, preview size, photo size, video quality, and restore the default recording length, etc.

### 3.3.3 Adjusting the focus

Slide two fingers outward or inward on the viewfinder screen so that you can zoom in or out.

## 3.4 Gallery

Use this application to view the images and videos.

You can choose from the application screen to enter the gallery, you can also slide to the right from the camera viewfinder screen to enter the application.

The images are created by the arrangement of the time.

Swipe left or right to view a (group) or a (group of) picture.

Long press a picture to view more actions:

Delete: Click the Delete icon to delete the pictures;

Transmission: Click on the icon you can transfer



---

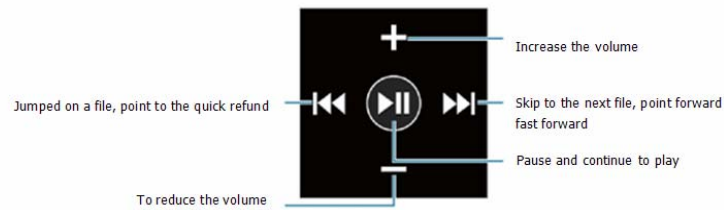
pictures to a connected mobile device.

Click on the picture to see the icon on the top right corner of the interface so that you can choose to delete or transfer pictures, you can also view the details of the picture.

Enlarge Image: Slide two fingers outward or inward to zoom the images on the screen.

### 3.5 Media Control

You can start playing music on a connected mobile device and use the smartwatch to control the media file playback.



### 3.6 AitalkAndroid

By using the application, you can say some operations through the voice remote command, such as dial-up, enter the camera, check the time and date.

Click on the AitalkAndroid icon on the application

---

screen, click on the icon to tell you your order recording.

The smartwatch may not recognize your command or may perform unnecessary commands .It depends on your environment or the way of speaking.

### **3.7 Stopwatch**

You can use this application measure time. Click on the stopwatch icon on the application screen. Click Start to start timing for the event. Click Time to time lap times. Click Reset to clear the lap time record.

### **3.8 Timer**

On the application screen, click the Timer icon to enter the application.

You can use this application to act as a countdown timer. Set the duration, then click Start .When the timer expires, click on the lift back to the timer settings page.

---

### **3.9 Today's schedule**

On the application screen, click the Today's schedule icon to enter the application.

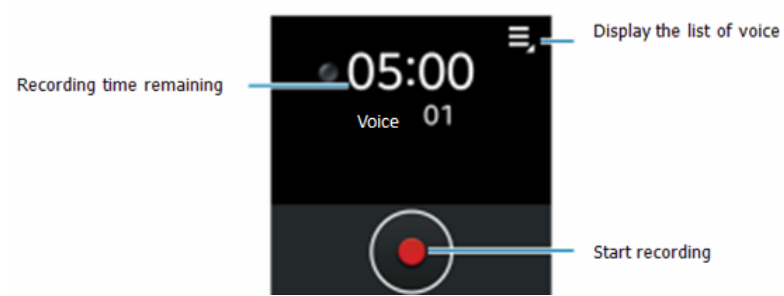
You can use this application to see today's schedule of the connected mobile devices.

Note: Using this application requires that one mobile device is connected, and the watch manager synchronization feature is turned on.

### **3.10 Voice memo**

On the application screen, click the Voice memo icon to enter the application.

Voice records will be saved automatically. Click the icon in the upper right corner to enter the recorded voice memo list, choose any one you want to hear to play. Click on the icon in the top right corner of the list, you can delete the voice memo you want.



### 3.11 Weather

On the application screen, click the **Weather** icon to enter the application.

You can use this application to view the weather information of the position which is set in your connected mobile device.

Note: Using this application requires that one mobile device is connected, and then add cities by watch manager.

### 3.12 Settings

Date and time

Automatic synchronization: Time and date are automatically updated. To use this feature, the device must be connected to a mobile device.

---

Set date: Set the current date.

Set time: Set the current time.

The whole point timekeeping: the smartwatch will be issued hourly chime alerts and messages.

#### Sound

Volumes: Adjust the media ringtones and notification sounds volume.

Sound mode: Set the coming calls mode (General, Silent, Meeting)

Touch sounds: Set the smart to play a sound when you select an application or option on the touch screen .

Phone Ringtones: Select Incoming call alert tones.

Notification: Select the new messages and missed calls and other events' ringtones.

Vibrate on touch: Set the smartwatch to vibrate or not if there is a notification.

#### Display

Brightness: Adjust the brightness of the screen.

Sleep: Set the time before turning off the screen.

Auto-rotate screen: To adjust the screen after checking the direction of rotation of the smartwatch.

Font Size: Change the font size.

---

### Battery

Check the remaining battery power.

### Bluetooth

Turn on and off the Bluetooth wireless feature, you can also see the Bluetooth address and set the device to be found by other Bluetooth devices.

### Privacy Lock

Set the unlock style (without and pattern unlock)

### Language

Set the system and applications' language. You can also sync the language with the connected mobile device.

### Backup & reset

You can reset the smartwatch to factory settings, which will delete all user data.

### About smartwatch

About: View the model, service status, software and hardware information, etc.

Usb debugging: Start a USB debug mode when the smartwatch is connected to the computer.

---

### **3.13 Notifications**

Once the smartwatch is connected to the mobile device and the mobile device is targeted, you can receive notifications, such as missed calls or new messages.

Upon receipt of notification, click on the icon in the upper right corner of the screen to view the details.

To view the notification history, slide to the Apps on the home screen, and then click Apps → Notifications to view the details.

### **3.14 Pedometer**

On the application screen, click the Pedometer icon to enter application.

You can use this application to keep track of your steps and information about exercise to manage your health.

Read and agree to the terms, and then you can set personal data. After starting Pedometer ,the application will calculate the number of steps you have walked and calories have been burned.

Click Start to calculate your steps .If you want to pause, click the Pause .If you wish to restore, click Start again.

---

Click the icon in the upper right corner can be carried out more operations, such as cleaning steps, re-set and change personal information, also walking target.

### **3.15 Find My Device**

On the application screen, click the Find My Device icon to enter application.

You can use this application to locate connected mobile devices.

Click Start, the connected mobile devices will make a sound, vibrate, and turn on the screen.

Note: This application is used only when the smartwatch is connected to other mobile devices.

### **3.16 Call Log**

On the application screen, click the **Call Log** icon to enter the application.

You can use this application to view the missed, received, outgoing call log of the connected mobile device.

(The smartwatch can only sync the latest 20 records .The earliest record will be automatically



---

deleted when a new record appears).  
Click a particular record to see more operations .Click  
on the dial-up icon to make a direct dial to the  
contact.

### **3.17 Music**

On the application screen, click the **Music** icon to  
enter the application .This application is to play local  
music on the smartwatch.

In the music player interface, you can choose the last  
and next music to play. You can also share currently  
playing music to other devices via Bluetooth.

Slide left in the music player interface to enter the  
volume control screen, press the + and - to adjust the  
sound of music.

Slide right in the music player interface to enter the  
song list. By clicking one item, you can play it, share it,  
set as ringtones, or delete it.

### **3.18 Compass**

On the application screen, click the **Compass**  
icon to enter the application.

You can use this application to identify the direction in

---

open field quickly.

Before using this application, you best to calibrate it.

### **3.19 Telecamera**

On the application screen, click the Telecamera icon to enter the application.

You can use this application control connected smart device very well.

When using this application you should turn on the remote camera of watch management application on a connected mobile device. When two devices are turned on, they will search for each other(There are both local and remote camera for you to choose according to your needs).By the connection you can use one camera to control the remote one, such as take a picture, switch camera.

Device choosing to act as a remote one is the controlling one, choosing to act as a local one is the framing one. If the pair have both chosen a remote one then they will control each other.

Note: The pair can't select to act as a local one both, otherwise they will not be controlled .So it will not reach the desired effect.

---

### **3.20 SWFlashlight**

On the application screen, click the SWFlashlight icon to enter the application.

When you are in darkness, you can open this flashlight, it can bring light from screen to you.

You can also choose to flash the screen automatically according to your need.

### **3.21 Gestures Control**

On the application screen, click the Gestures Control icon to enter the application.

You can use this application to draw a simple gesture to enter a specific application of the connected mobile device.

Note: Before using this application, you should first choose an appropriate gestures for a specific application by Watch manager.

---

## **4 Connecting to a computer**

You can also use the smartwatch as a U disk to upload and download data.

Go to Settings - About watch, check the USB debugging items. Then plug in the USB cable connected to the computer to the phone, select to Open USB storage device, and then get into my computer, find the watch storage disk, at last you can transfer the data between the computer and the smartwatch.

---

## 5 FAQs and Solutions

If you have any questions about the smartwatch, please find the solutions from the table below.

FAQs	Causes	Solutions
Failed to turn on your smartwatch	The battery power is used up	Check the battery power level or charge the battery.
Another device can't find your device or disconnect	Bluetooth is not on	Turn on the Bluetooth
	Long distance	Put the devices closer to each other
	Function does not start	Reboot and try again
Failed to make a call	The mobile device is not connected	Connect to the mobile device
	No access to the network or connection limits	Ensure that your mobile device is connected to the network normally or to lift connection limits

---

	Disconnect	Try to find others with the Find my devices app. If it's not successful ,please reboot and try again.
Failed to charge the battery	The battery or the USB is damaged.	Change a new battery or USB.
	Charge the battery when ambient temperature is lower than -10°C or above 55°C.	Change the charging environment.
	Poor connection.	Check whether the plug is properly connected.

---

## 6. Warnings

Caution: The user is cautioned that changes or modifications not expressly approved by the party responsible for compliance could void the user's authority to operate the equipment.

This device complies with Part 15 of the FCC Rules. Operation is subject to the following two conditions: (1) this device may not cause harmful interference, and (2) this device must accept any interference received, including interference that may cause undesired operation.

NOTE: This equipment has been tested and found to comply with the limits for a Class B digital device, pursuant to Part 15 of the FCC Rules. These limits are designed to provide reasonable protection against harmful interference in a residential installation. This equipment generates, uses and can radiate radio frequency energy and, if not installed and used in accordance with the instructions, may cause harmful interference to radio communications. However, there is no guarantee that interference will not occur in a particular installation.

If this equipment does cause harmful interference to

---

radio or television reception, which can be determined by turning the equipment off and on, the user is encouraged to try to correct the interference by one or more of the following measures: -- Reorient or relocate the receiving antenna. -- Increase the separation between the equipment and receiver. -- Connect the equipment into an outlet on a circuit different from that to which the receiver is connected. -- Consult the dealer or an experienced radio/TV technician for help.

FCC Radiation Exposure Statement: This equipment complies with FCC radiation exposure limits set forth for an uncontrolled environment.