



**Rocksoul™**

**Mini Bluetooth Keyboard**

**User' s Manual**

## Table of content

- Introduction
- Hardware Installation
- Software Installation and Use
  - Windows Mobile OS
  - Nokia Symbian S60 OS
  - Windows with IVT stack
  - Windows with AB1100 stack
  - Linux OS
  - ipad and iPhone 4.0 OS
- Combo Keys Function Guide

## Introduction

Thank you for purchasing the Mini Bluetooth Keyboard! You can use it for emails, chatting and your favorite games.

It is compatible with:

1. Computers with Windows/Mac /Linux OS
2. Handhelds with Windows Mobile (6.0 & later)/Nokia Symbian S60 (V3.0 & later) OS
3. Sony Playstation3
4. HTPC with built-in Bluetooth
5. Apple iPad, iPhone/Touch in 4.0 OS

## Package Contents

The retail package contains:

- Mini Bluetooth Keyboard
- Installation CD (Incl. User Manual)
- Power USB2.0 Cable

If any items are damaged or missing, please contact your vendor.

## Features

- Bluetooth Version Bluetooth V3 .0
- 49 keys mini keyboard
- Built in rechargeable Li -ion battery, Micro USB port charging
- Color LED for working status indication
- Built in intelligent power manage software for power conservation
- Working range: 10m
- Charging time: 3-4 hours

## Mobile System Requirements

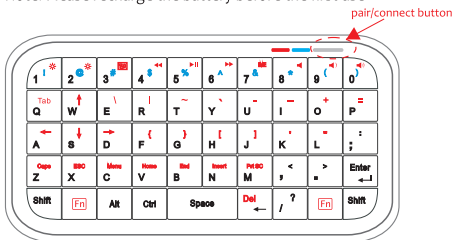
- The device must built in Bluetooth function
- The mobile Operating System should be one of following:
  - Windows Mobile (6.0 & above) OS
  - Nokia Symbian S60 (V3.0 & above) OS
  - iPhone 4.0 OS

## Computer/Laptop/HTPC System Requirements

- Bluetooth-enabled in Windows 98, Me, 2000, XP , Vista , Win7
- Bluetooth-enabled in Mac OS

## Hardware Installation

Note: Please recharge the battery before the first use



1. Switch the keyboard ON, by ON/OFF button:  
The BLUE led will light up for 2 seconds.
2. Press the pair/connect button :  
The BLUE led will flash.
3. Now the Mini Bluetooth keyboard is in pairing mode and waiting for connection with your device.

### Notice:

1. When low power, the blue LED will light up for 1 second and be blinking intermittently.
2. When charging, the Red LED will light up, and be off when full charging.

## Recharge the battery

Connect the mini Bluetooth keyboard to your computer's USB port by the Power USB cable (you can find the cable in the retail box).

## Software Installation And Use

### Microsoft Windows Mobile OS

#### Installation

#### Note:

Instructions below are for mobiles running WM6.0 and earlier OS. For WM6.1 and later OS mobiles, just use the mobile built-in Bluetooth to connect this Mini Bluetooth Keyboard directly!

#### On your computer:

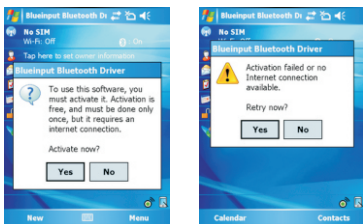
1. Insert Drivers CD and open the CD from "My computer".
2. Locate the "Windows Mobile" folder and the "inside" "windosmobile.cab" CAB file.
3. Copy the CAB file to your mobile device.

#### On your Windows Mobile device:

1. Locate the CAB file copied.
2. Run the windosmobile.cab file to start installation.

The Mini Bluetooth keyboard Driver will install on your device automatically. At the end of the installation, the setup will require a reset.

The first time you run the Bluetooth Keyboard Driver on your Windows Mobile device, you'll see a prompt to activate the software:



If you press NO or if the Internet is not available, Activation will fail and you won't be able to use this software.

Make sure your Windows Mobile device is connected to the Internet , press YES. You only need to do this once after the installation.

## Configuration and Troubleshooting

After the software is successfully installed on your device, you need to pair the Bluetooth Mini Keyboard.

1. Make sure your Bluetooth Mini keyboard is in the pairing mode.
2. Open the Bluetooth on your devices, and click “Add new”



3. Select the Bluetooth Mini Keyboard, and tap “Next”



4. When prompt for passkey, leave the passcode field blank and tap “Next” (if this fails, enter 0000 as a passcode and press Next)



5. At this step select the “Input device” service and tap “Finish”.



6. Go to the Software settings Panel, and tap “Connect”.

Here are some solutions for the error messages that might appear while using:

- “The software is not responding. You need to reinstall this software.”

This error is caused by a problem with the communication between the software components. You need to check if your Windows Mobile Device is compatible with the software, and try to reinstall the software.

- “Bluetooth is turned off. To use the software, please enable your Bluetooth module!”

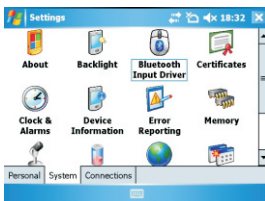
Make sure you are using the software on a smart phone with Windows Mobile (5.0 or 6.0) and the Microsoft Bluetooth Stack. Then enable Bluetooth before using the Software.

- “No active Input Device found. You need to pair a device, using the Bluetooth control panel.”

Make sure your Mini Bluetooth keyboard is correctly paired to your smart phone. If this error appears while your keyboard is paired, redo the pairing.

## Settings panel

To open the settings panel, go to Start->Settings->System TAB, and tap the icon named “Bluetooth Input Driver”





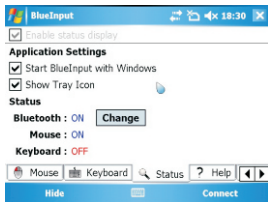
The Settings panel displays several pages, for better access to the software options:

## Keyboard Page



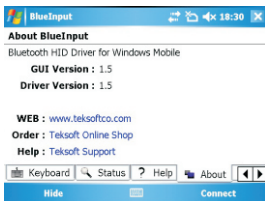
This page offers two options: enable / disable the keyboard functionality and enable / disable keyboard sounds.

## Status Page



Here you can view the status and configure the driver to start when Windows Mobile starts (autostart) and you can enable / disable the Tray icon. The tray icon allows quick access to the Settings panel.

## About



The About page displays the software version and some other useful info.

## Nokia Symbian OS

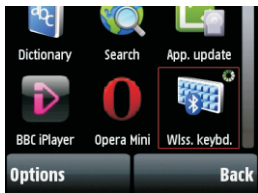
### Installation

#### On your computer:

1. Insert Drivers CD and open the CD from “My computer”
2. Open “Nokia Wireless Keyboard Application” folder and choose your device model or Operating system version, copy the .sis file to your device.

#### On your Symbian device:

1. Find the .sis file (on mobile device or memory card) and press “OK” button, follow the hints to finish the installation
2. Run the installed application and search Bluetooth device.



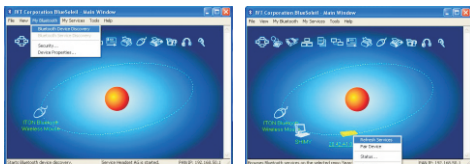
3. After paired and connected, you will have to set the keyboard layout. If layout is not set correctly, the keyboard might not function as expected.

## Windows with IVT Bluetooth stack

### Configuration

1. Open the IVT BlueSoleil Software, and search the devices nearby.

Note: Different version softwares might have different steps, kindly refer to software manual for details.



2. Right click the Bluetooth Keyboard and select “Refresh Services” .



3. Right click the Bluetooth Keyboard again and select “Connect-Bluetooth Input Service” .
4. On the popup dialog you'll see a code. Input the code in your Bluetooth Keyboard and click enter or OK.

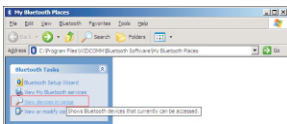


The system will connect with the Bluetooth Keyboard automatically.

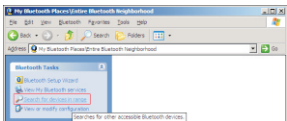
## Windows with Ab1100 Bluetooth stack

### Configuration

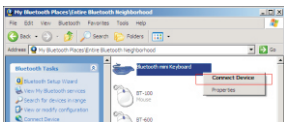
1. Make sure that the Bluetooth function is active on your PC. Open the Bluetooth Software main page.



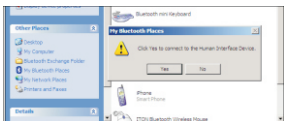
2. Click "Search devices in range" and wait until the Mini Bluetooth keyboard is discovered.



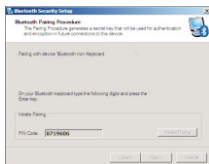
3. After find the Bluetooth Mini Keyboard, right click it, and select “Connect device” .



4. Select YES to connect to the “Human interface Device”



5. There will be a code popued. Input the code and press enter in your Bluetooth Keyboard .



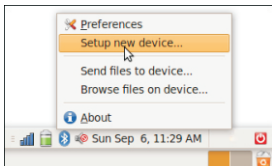
The system will connect the Bluetooth Keyboard automatically .

## Linux OS

### Configuration

There are several Linux distributions available. This guide was designed for Ubuntu linux, but can be easily adapted for other versions. Your computer must be equipped with a Bluetooth module (built in, or USB Dongle).

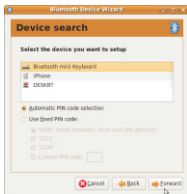
1. Make sure that the Bluetooth function is active on your device. Click the Bluetooth icon and select “Setup new device”



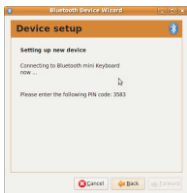
2. A wizard window opens, read the text and press “Forward”



3. After find the Bluetooth Mini Keyboard, select it and press "Forward"



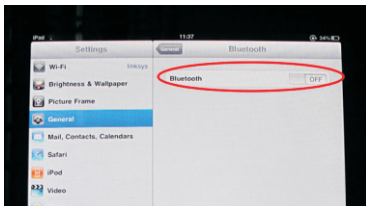
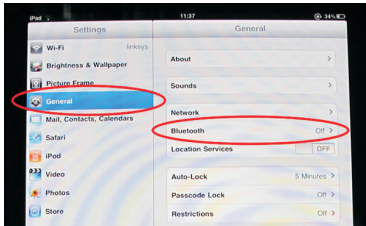
4. Input the code and press Enter in your Bluetooth Mini keyboard.



If the code was correctly entered, a confirmation message is displayed. Now you can start using your bluetooth keyboard.

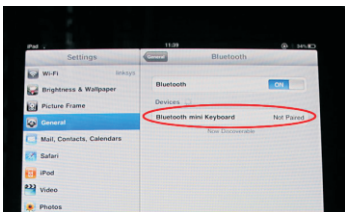
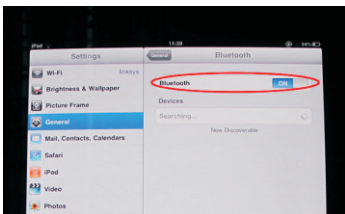
## iPad and iPhone 4.0 OS

1. Enter "Setting"---"General", turn on the bluetooth:

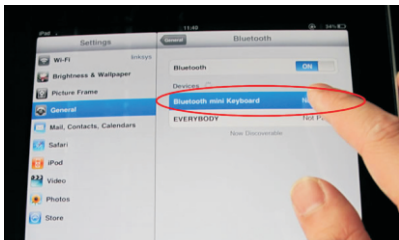


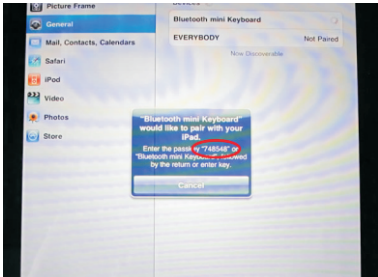


2. After turning on the bluetooth, it will search bluetooth devices automatically:

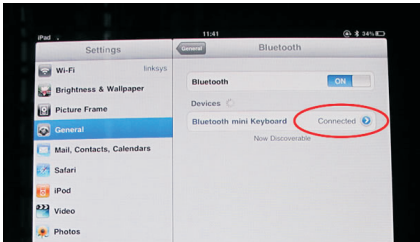


3. After finding "Bluetooth mini Keyboard", press the device, it will start connecting, and there will be a password displayed:





4. Press the password in your Bluetooth mini Keyboard, and "Enter", it will connect with your iPad/iPhone, now you can use your Bluetooth mini Keyboard to input words for your iPad/iPhone:



## Keyboard Matrix List

1	2	3	4	5	6	7	8	9	0
Tab	W	E	R	T	Y	U	I	O	P
A	S	D	F	G	H	J	K	L	;
Cap	ESC	Menu	Home	End	Insert	PrntSc	,	=	Enter
Shift	Fn	Alt	Ctrl	Space	Del	/ ?	Fn	Shift	

### Remark:

1. Press Fn+Enter will lock the Red symbols function. For example, press W will function as Arrow Up, O for +.  
Repress Fn+Enter to unlock.
2. For Blue symbols, press Shift key together. For example, Shift+1 to be !, Shift+/ to be ?.
3. Multimedia function keys are just for iPad and PC.
4. Above guidelines are based on standard key matrix, certain mobile's matrix might be different.

# Combo Keys Function Guide

## NokiaS60 System

1	Fn+W/A/S/D	Navigation keys
2	Fn+Alt	Left key
3	Fn+Ctrl	Right key
4	Fn+Shift(left )	Call key
5	Fn+Shift(right)	End key
6	Fn+Space	Menu
7	Ctrl+Enter	OK

## Windows Mobile System

1	Fn+W/A/S/D	Navigation keys
2	Fn+Alt	Home

## Mac

1	Fn+W/A/S/D	Navigation keys
2	Fn+1	Brightness down
3	Fn+2	Brightness up
4	Fn+3	Expose tasks

## iPad

1	Fn+W/A/S/D	Navigation keys
2	Fn+7	Input method switch

Note:

This equipment has been tested and found to comply with the limits for a Class B digital device, pursuant to Part 15 of the FCC rules. These limits are designed to provide reasonable protection against harmful interference in a residential installation. This equipment generates, uses and can radiate radio frequency energy and if not installed and used in accordance with the instructions, may cause harmful interference to radio communications. However, there is no guarantee that interference will not occur in a particular installation. If this equipment does cause harmful interference to radio or television reception, which can be determined by turning the equipment off and on, the user is encouraged to try correct the interference by one or more of the following measures:

- Reorient the receiving antenna.
- Increase the separation between the equipment and receiver.
- Connect the equipment into an outlet on a circuit different from that to which the receiver is connected.
- Consult the dealer or an experienced radio/TV technician for help.

You are cautioned that changes or modifications not expressly approved by the party responsible for compliance could void your authority to operate the equipment.