

DIGIZON

User Manual



Models : DIGIZON-101A
DIGIZON-102A
DIGIZON-103A

Version : 1.0.100ENG

Published : March 2007

TABLE OF CONTENT

Chapter 1	Introduction	Page 02
Chapter 2	Hardware Connection	Page 05
Chapter 3	Software Installation	Page 06
Chapter 4	Player & Control Panel	Page 14
Chapter 5	Surveillance and Video Conference	Page 18
Chapter 6	Recording	Page 19
Chapter 7	Video Manager	Page 21
Chapter 8	Advanced Setup	Page 24
Chapter 9	Trouble Shooting	Page 28

Chapter 1 Introduction

1.1 WELCOME

Thank you for your purchasing on DIGIZON.

For the first installation, please fully understand entire content and description also please set-up in a DIGIZON environment, otherwise it may encounter an unsuccessful operation. We will guide you through the installation setup program process in Installation Wizard.

1.2 CHECKLIST

A. To unpack the package, take out the DIGIZON case and please check the accessories are included as below:

No.	ITEM	Q'TY
1	DIGIZON Box	1
2	AV Cable	2
3	S Video Cable	1
4	CATV Coaxial Cable	1
5	IR Emitter	1
6	NTSC Converters (For NTSC Only)	2
7	Ethernet Cable	1
8	Adaptor and Power Cable	1
9	Installation CD	1
10	Warranty Card	1



Note: There is a DIGIZON ID labeled on the bottom of DIGIZON case, if not, please contact agency where is nearby.

B. System Requirement

OS:	Windows ME, 2000, XP (with DirectX 9.0c or above)
CPU:	Pentium 4, 1.2 GHz or above (MMX, SSE and SSE2 support)
Memory:	256MB or above
Display Card:	DirectX compatible
Sound Card:	DirectX compatible
Recommended setting:	1024x768 resolution 32-bits Color bit
AP/Router	Optional

1.3 FUNCTION OVERVIEW

1.3.1 TV Mobility

With NTSC/ PAL selectable, also supports personal TV channel naming. And virtual remote control panel is equipped for controlling TV in front of player.

1.3.2 Home Surveillance

2 sets of AV input for cameras are included, real-time monitor the surveillance video on internet. You can just sit back and ensure the safety of your love ones. (for details please see chapter 5)

1.3.3 Video Conference

Need a pair of DIGIZON for two-way video conference, and you can do real-time high quality video/audio transmission on internet. (for details please see chapter 5)

1.3.4 Digital Video Recorder (for DIGIZON Pro ONLY)

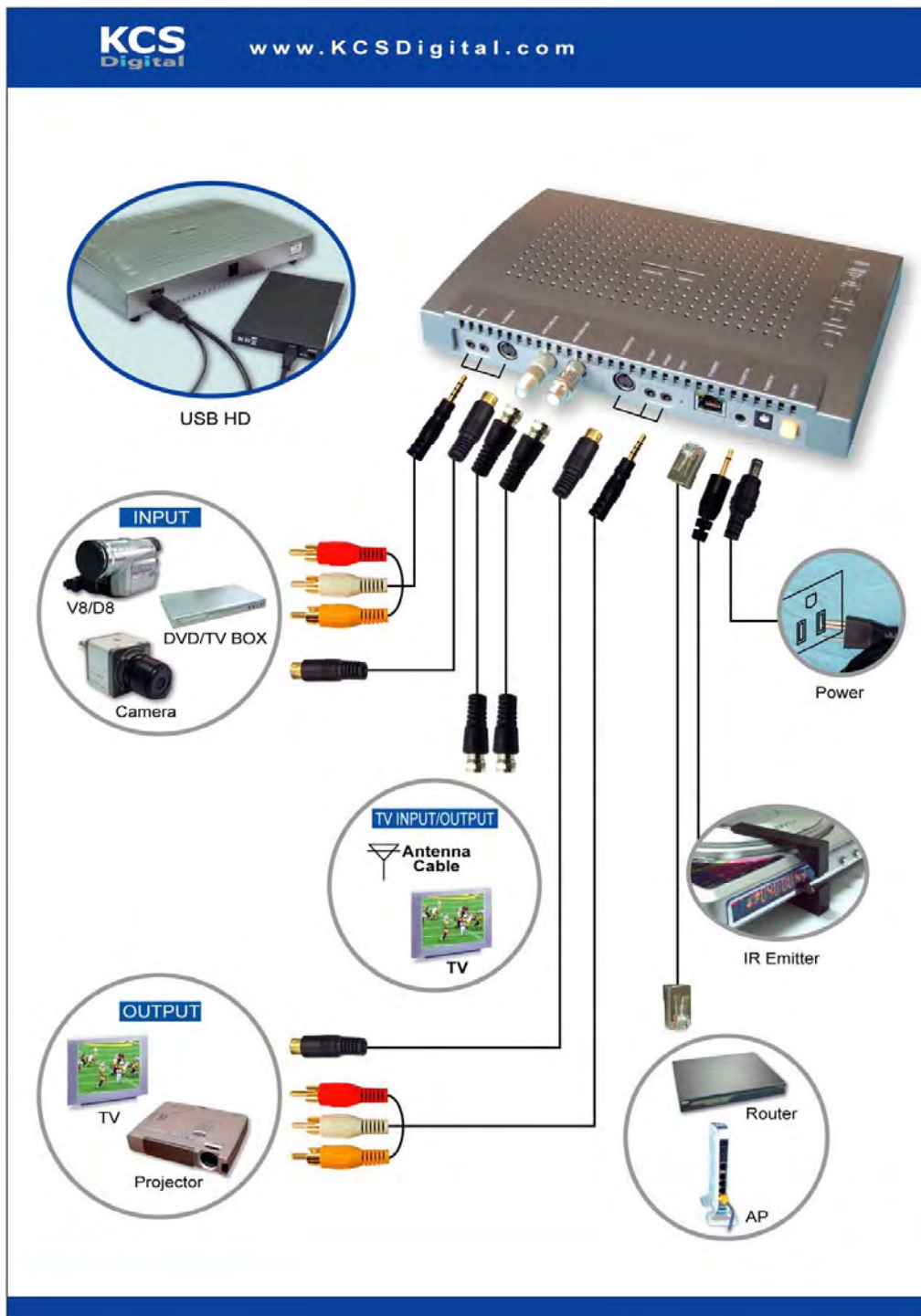
Instant record the video you are watching on and schedule recording the program you like and won't miss it anyway. You can also remotely set multiple off-line record tasks for schedule recording. It supports USB 2.0 external storage

devices. Only 900MB storage required for one hour DVD quality video. (for details please see chapter 6)

1.3.5 Network HD (for DIGIZON Pro ONLY)

You can simply access personal USB 2.0 external HD on internet, remotely download, upload, search and manage files from outside. (for details please see chapter 7)

Chapter 2 Hardware Connection



Note:

1. S-Video input/output is assigned as the AV IN 2/AV OUT 2 .
2. IR emitter must be pointed to the IR signal receiving window of the video device.
3. USB HD or any other external storage devices are for DIGIZON Pro only.

Chapter 3 Software Installation

Player Installation

Power on the router/AP and DIGIZON.

Make sure the Ethernet cable is well connected.

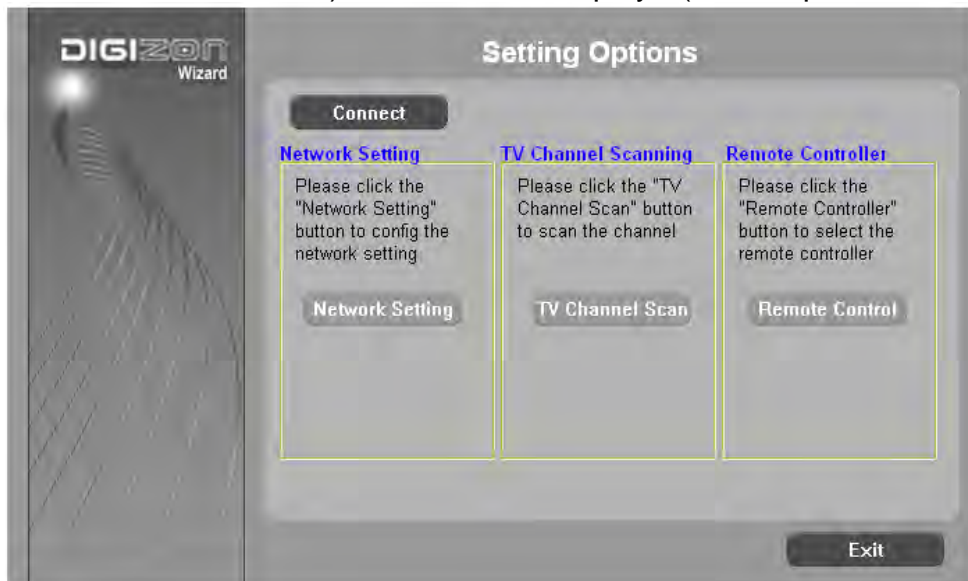
Insert the installation CD and installation will start automatically. If not, please double click the icon named "Setup" in the root directory.

Follow the introductions till installation finished.



Setup DIGIZON

User can setup DIGIZON in Wizard ("Start"→"Program Files"→"DIGIZON Player"→"DIGIZON Wizard") or "Advanced" in player(see chapter 8 for details)

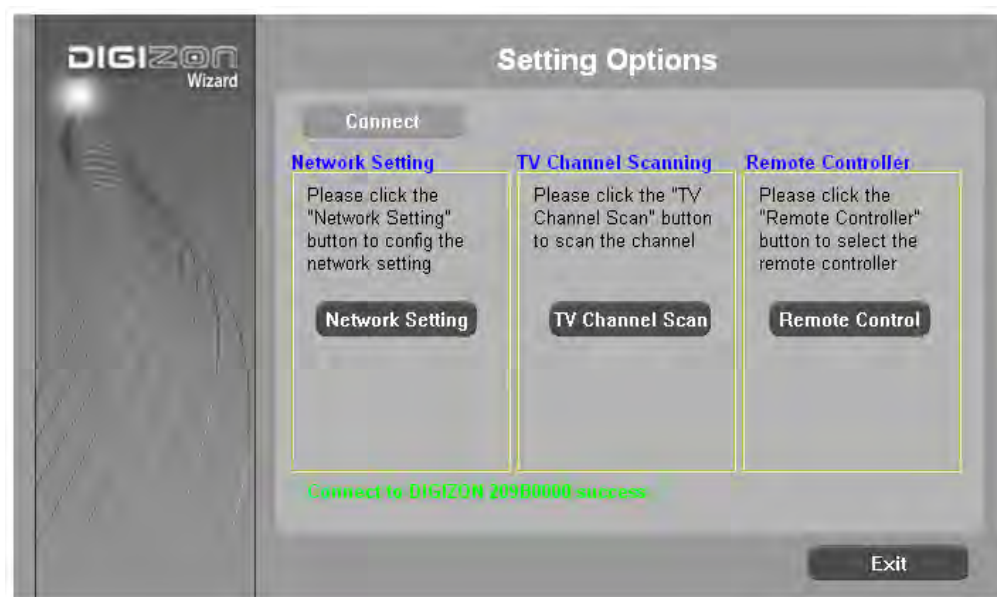
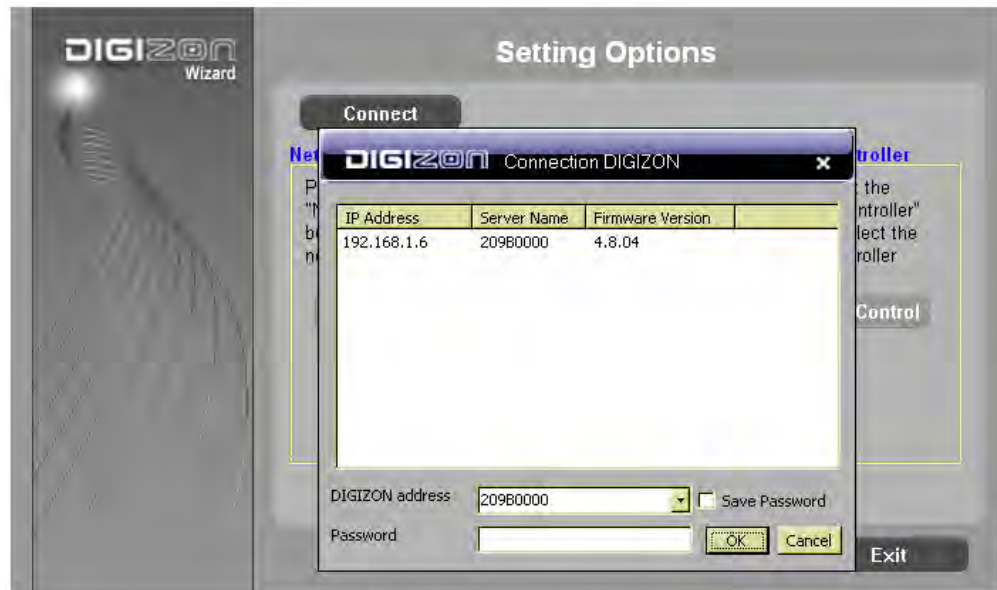


Connect to DIGIZON

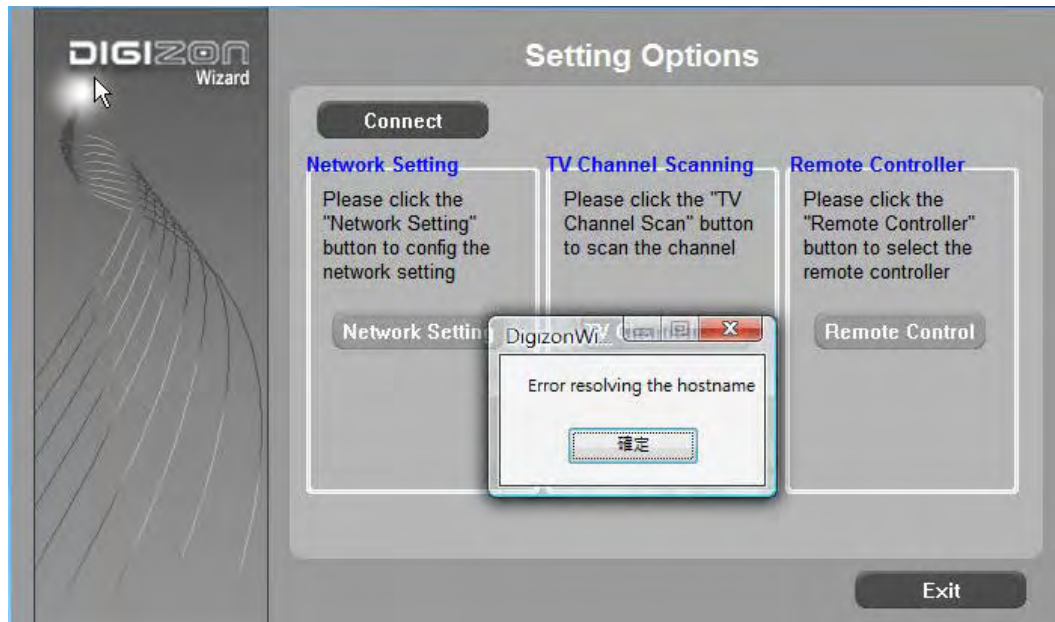
Click "Connect"

Enter DIGIZON ID which is labeled at the bottom of DIGIZON box and password (null as default).

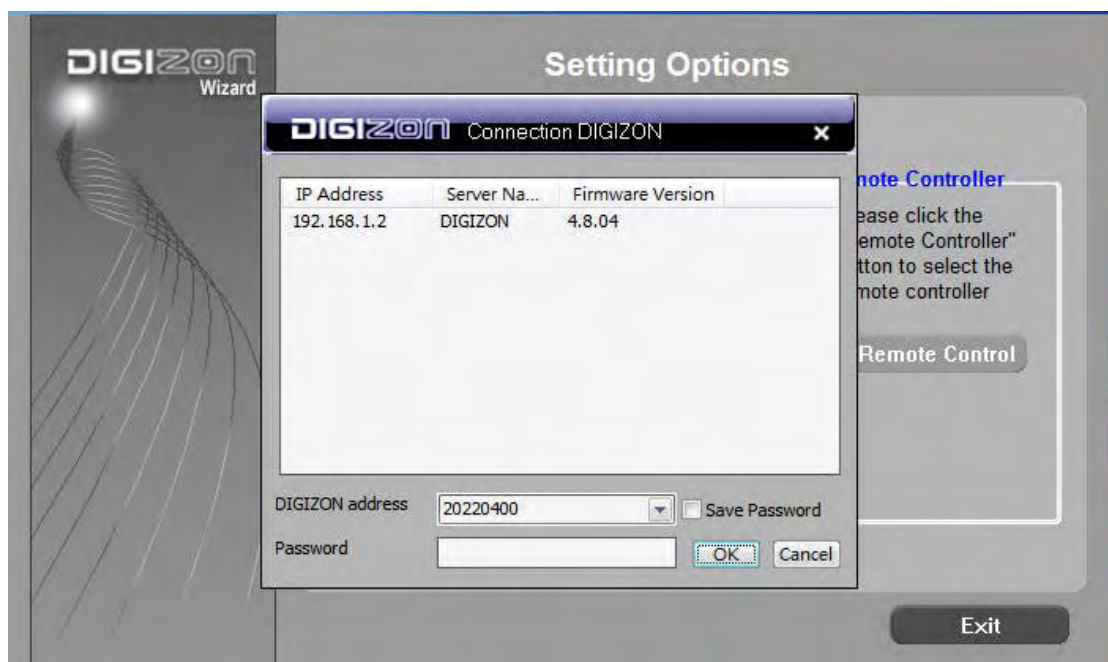
It takes a few minutes to setup the connection configuration.



When successful connection, user takes option(s) as needed.
If error occurred, check DIGIZON ID first and try again.

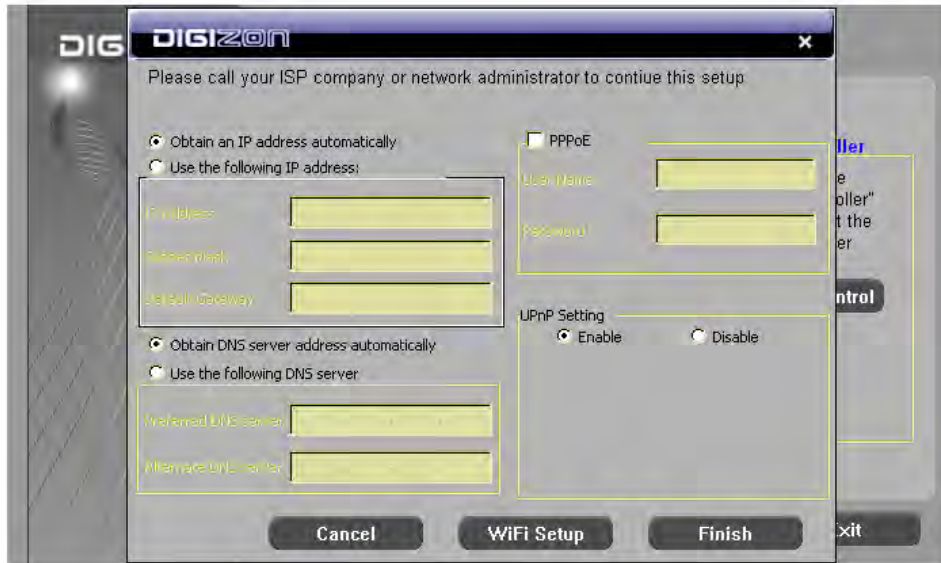


In case the router/Hub with DHCP disabled, please change PC's IP address to 192.168.1.xx (the same subnet with DIGIZON) and reconnect.
Click the DIGIZON IP address to connect.
See chapter 9 for more information, if connection still fails.



Network Setting

For internet and wireless connection setting, please take this step.



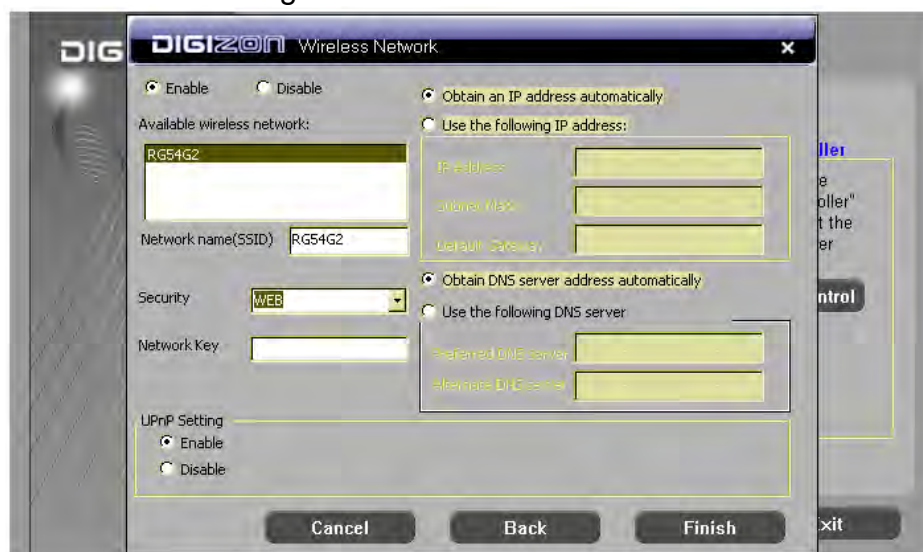
Internet settings

- ✓ Assign IP and DNS address if the static IP and DNS server assigned.
- ✓ For PPPoE users, enter ID and password, if the connection is not dialed up from router.

Wireless connection is for DIGIZON plus or DIGIZON Pro.

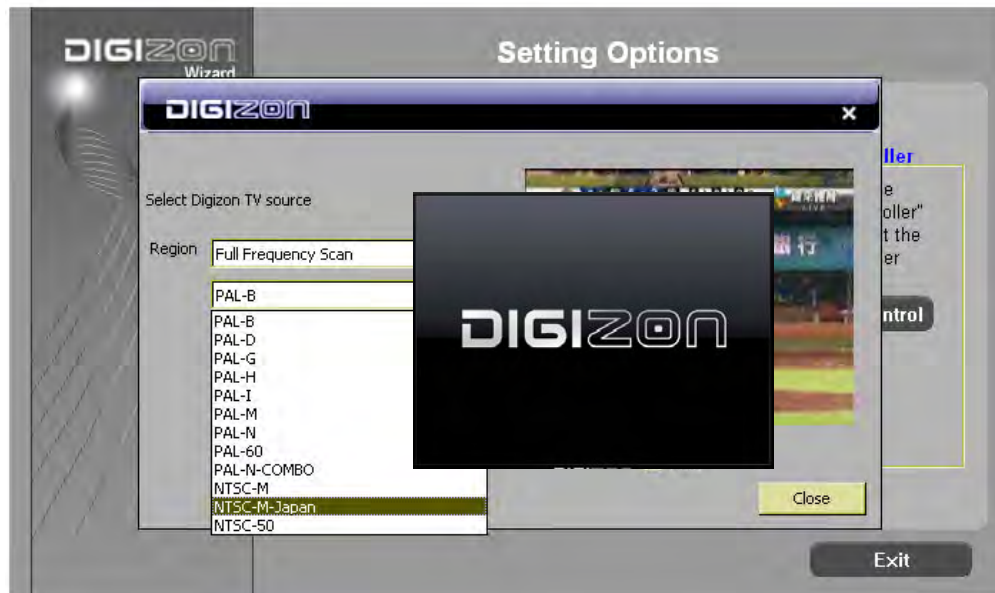
Wireless connection

- ✓ Enable wireless connection.
- ✓ Select the available AP from the list.
- ✓ Enter password if security mode (WEP) enabled.
- ✓ Assign IP and DNS address if static IP and DNS server assigned.



TV Channel Scan

For the user whose TV source is from cable or antenna, please take this step.

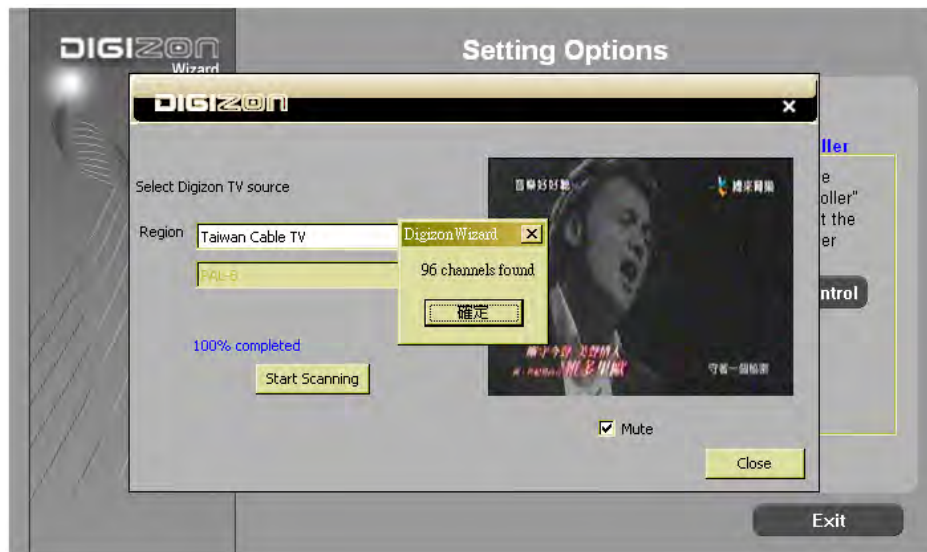


Choose the region from the list or “Full Frequency Scan”, if none available. Select TV color system when “Full Frequency Scan” selected.



Click “Start Scanning” to scan and you can enable “Mute” during scanning.

It takes 5 to 10 minutes to scan.

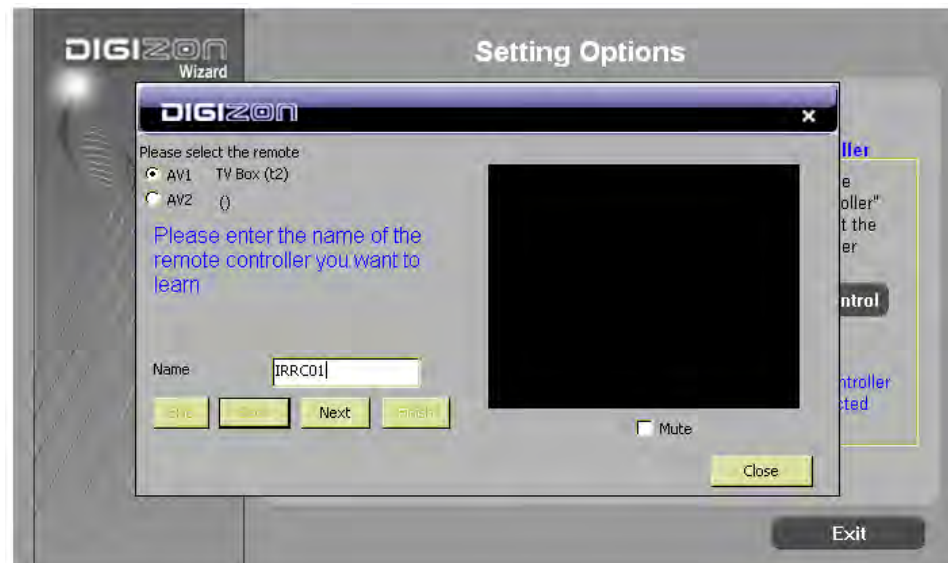


Click "Close" when finish.

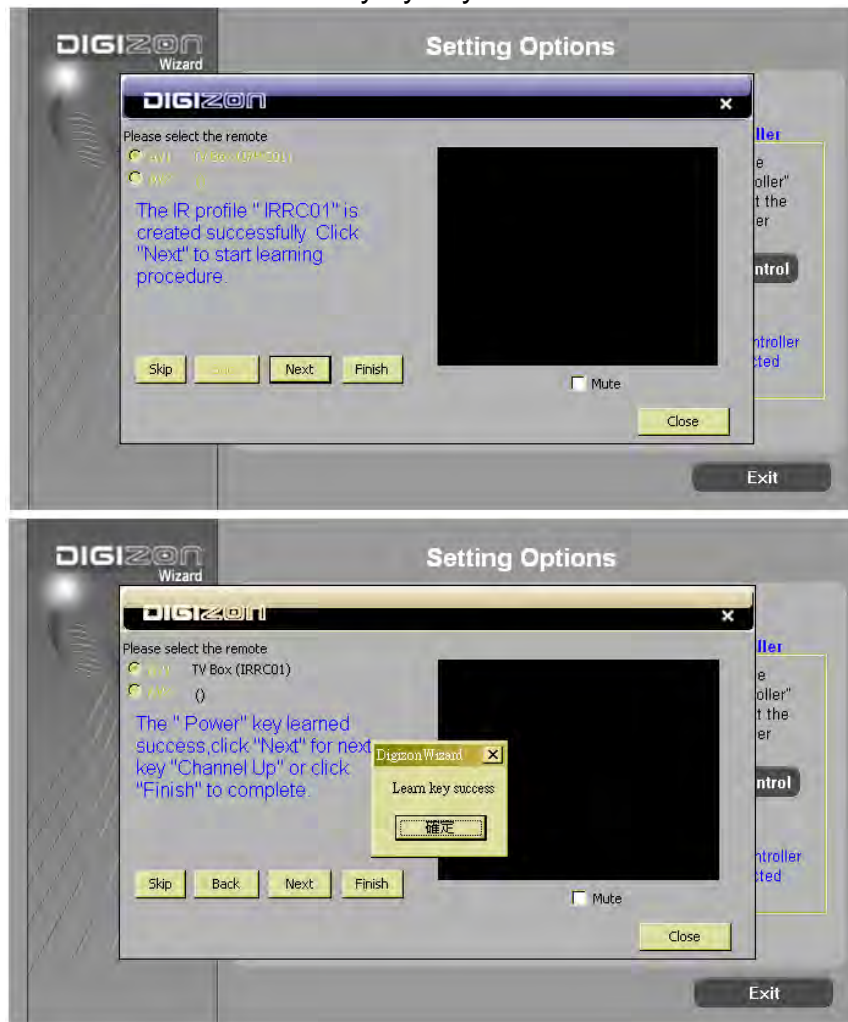
Remote Controller Setting

Point the remote controller of the video device to DIGIZON IR receiving window.

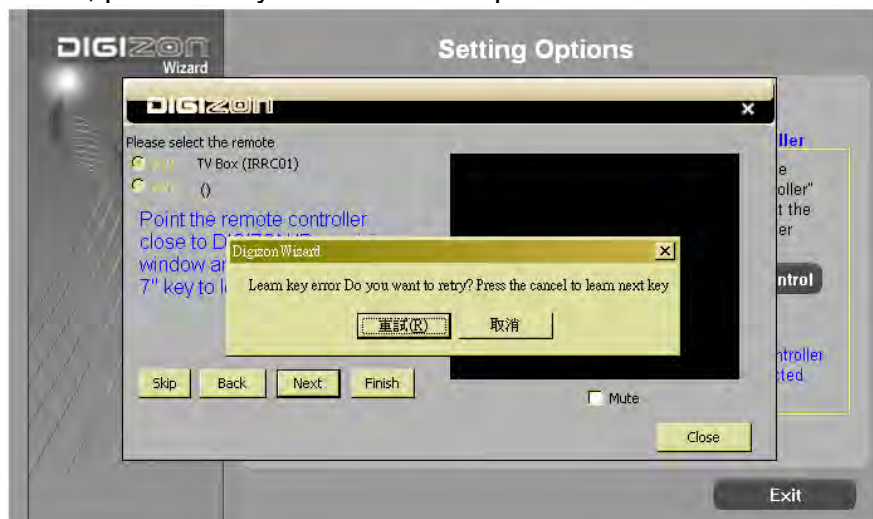
Enter video device name and click "Next" to continue.



Follow the instructions to learn key by key.

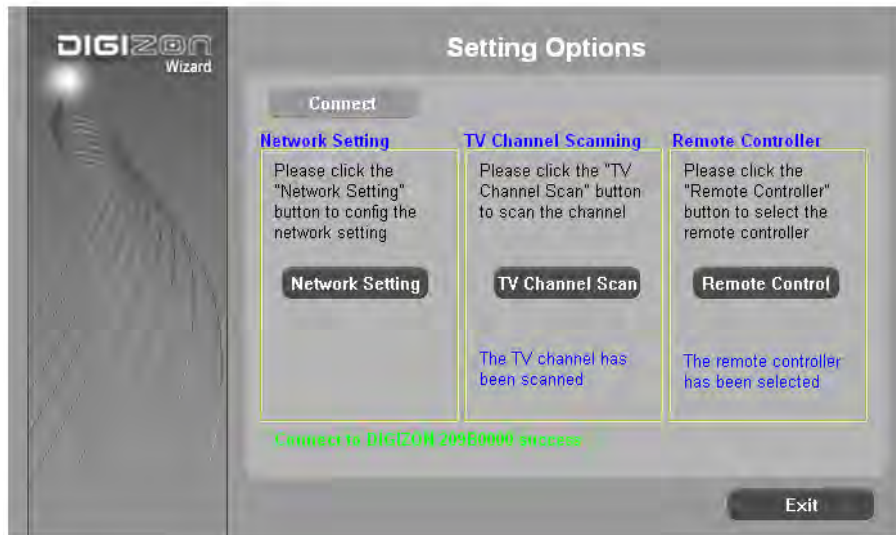


You can assign 3 often use keys to button A, B, and C.
If learning failed, please retry or cancel to skip.



Click "Finish" and "Close" to end.

Click “Exit” to finish the setup. You can change the settings in the “advanced” in the player whenever you need.



Chapter 4 Player and Control Panel

4.1 Before connection



4.1.1 Click **CONNECT** to connect to DIGIZON.

4.1.2 Enter DIGIZON ID (remote user) or select IP address (local user).

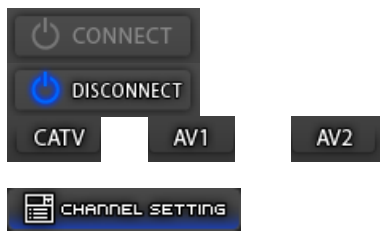


4.1.3 Enter password (null as default), and click “OK”.

4.2 While connecting



4.3 Buttons

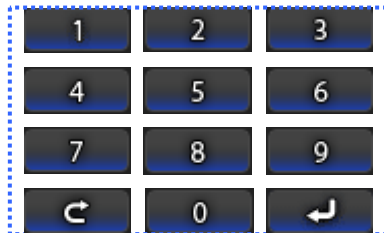


Connect to DIGIZON

Disconnect from DIGIZON

Select the video source

TV channel setting, see 4.4



Numeric pad ( last choice;
 enter)



Volume control



Channel control



Pause, while playing



Mute



Instant recording* (see chapter 6)



Schedule recording*(see chapter 6)



Video file management*(see chapter 7)



Advanced Setup (see chapter 8)



For external AV devices use, button A, B, and C are user-defined hot keys.

*DIGIZON Pro only

4.4 Channel setting

4.4.1 When TV sourced from cable or antenna, you can name, enable, or disable for each channel.

4.4.2 Click  CHANNEL SETTING



4.4.3 Select the channel from the list.

4.4.4 Enter channel name (in 22 characters).

4.4.5 Enable/disable the channel. The disabled channel is still on the list, and you can enable it whenever you need.

4.4.6 Click “Settings” to confirm.

4.4.7 Click “Exit” to finish.

Chapter 5 Live Video Applications

5.1 Surveillance

- 5.1.1 Connect camera (analog) to AV IN 1 (or AV IN 2)
- 5.1.2 Start the player and choose video source AV1 (or AV2).
- 5.1.3 Control volume if there is an audio input.
- 5.1.4. Properly select NTSC/PAL in “Advanced” setup to match camera color system.

5.2 Video conference

- 5.2.1 For video conference, you need a pair of DIGIZON.
- 5.2.2 Connect the camera (analog) to AV IN 1 (or AV IN 2)
- 5.2.3 Both sides have to log in DIGIZON of opposite side.
- 5.2.5 Choose the opposite side camera signal source AV1(or AV2)
- 5.2.6 Both sides have to ensure opposite side DIGIZON ID, password, and conference camera signal source has to be AV1 (or AV2)

Chapter 6 Recording

- 6.1 Recording is for DIGIZON Pro only.
- 6.2 Connect USB 2.0 external storage device to DIGIZON USB port. (FAT 32 supported, NTFS for read only)
- 6.3 Reboot (power off and on) DIGIZON and start player.

6.4 Instant recording

- 6.4.1 Click 



- 6.4.2 Select the resolution for recording video.
- 6.4.3 If the recording resolution is different from now playing, the player will stop.
- 6.4.4 Set recording duration, and be sure the space is sufficient.
- 6.4.5 Click “Record now” to start.
- 6.4.6 Click “Exit” to close dialog box (keep recording) or “Cancel” to abort (give up recording and delete recording file)

6.5 Schedule recording

6.5.1 Click  SCHEDULE REC.

6.5.2 Add a new recording task.



6.5.3 Select video source and channel (for CATV, if your TV sourced from set top box, switch the channel before recording)







6.5.4 Define recording daily or weekly. When weekly recording, select days as wish.

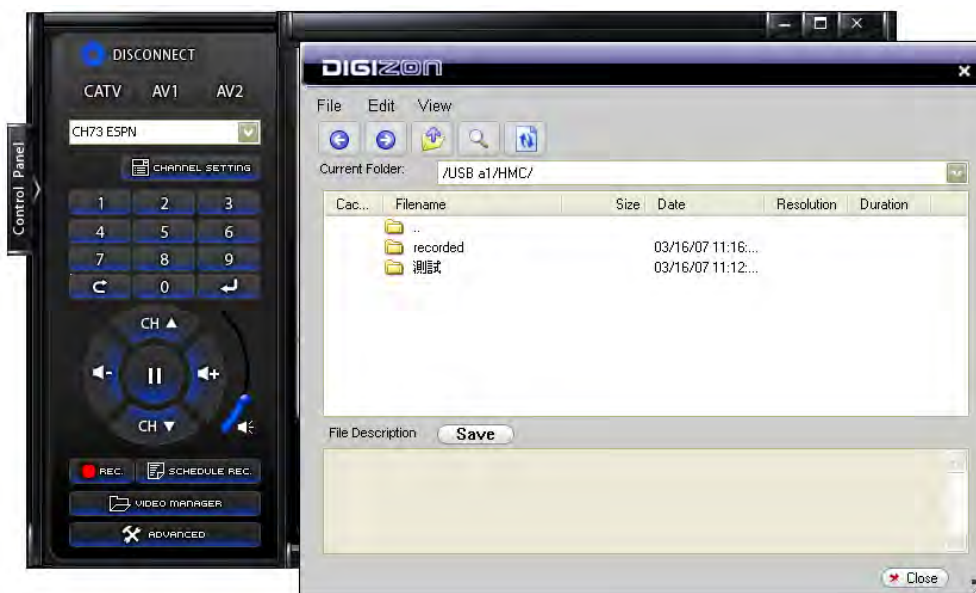
6.5.5 Define start date, time, and duration. Be sure the storage space is sufficient.

6.5.6 Define the repeats for recording task(s).

6.5.7 Delete the task(s) if you change your mind.

Chapter 7 Video Manager

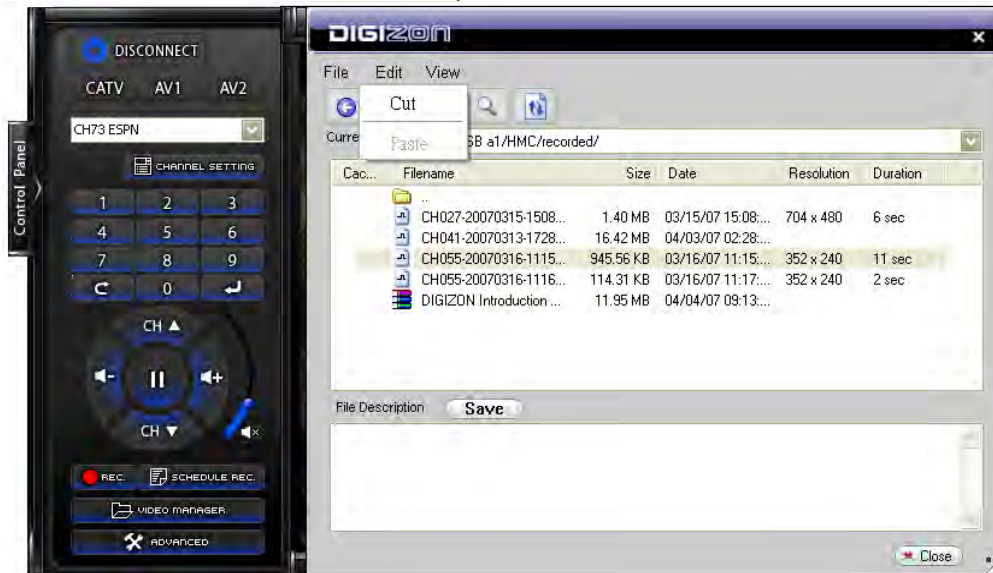
- 7.1 Video Manager is for DIGIZON Pro only
- 7.2 Connect USB 2.0 external storage device to DIGIZON USB port. (FAT 32 supported, NTFS for read only)
- 7.3 Reboot (power off and on) DIGIZON and start player
- 7.4 Click 
- 7.5 Buttons
 - 7.5.1  Back to the last page.
 - 7.5.2  Forward to the next page.
 - 7.5.3  Move to father directory.
 - 7.5.4  Search files or directory.
 - 7.5.5  Refresh



- 7.6 File
 - 7.6.1 Copy selected file from PC to DIGIZON external storage.
 - 7.6.2 Copy selected file from DIGIZON to PC.
 - 7.6.3 Create a new folder on DIGIZON external storage.
 - 7.6.4 Rename the selected file.
 - 7.6.5 Delete the selected file in DIGIZON external storage.

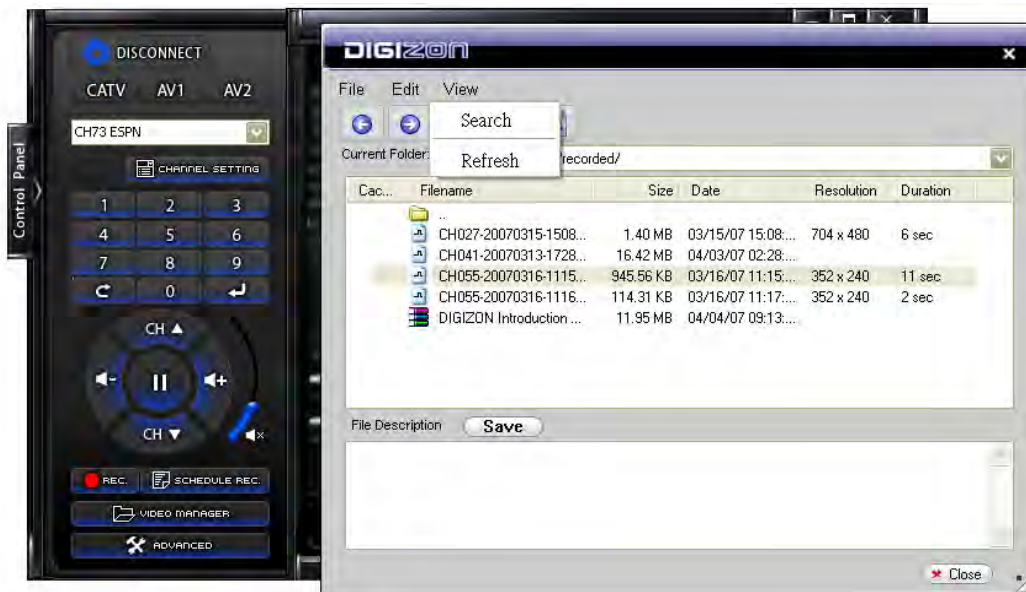
7.7 Edit

7.7.2 Paste file from clipboard.



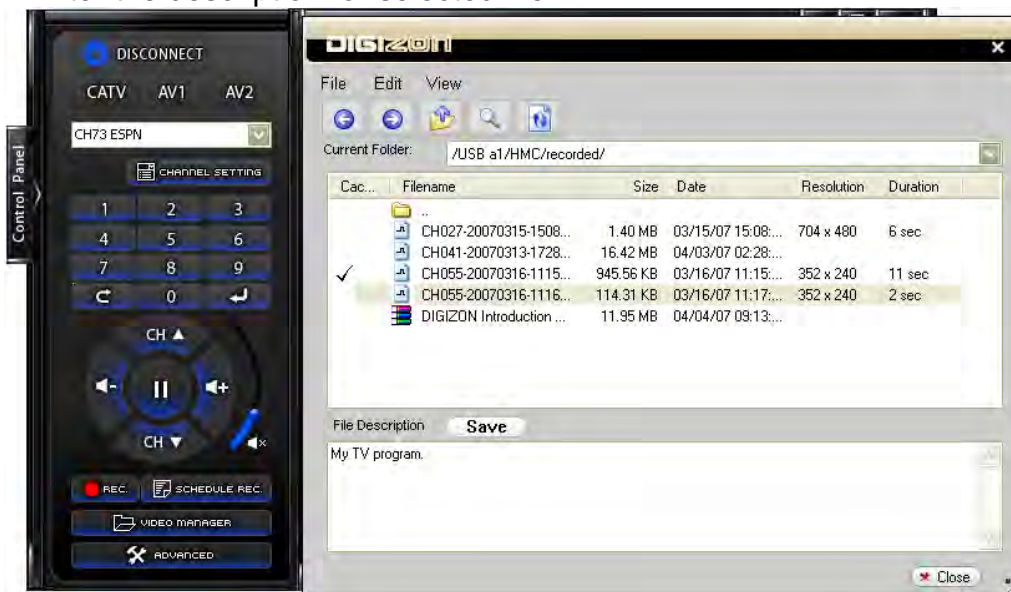
7.8 View

7.8.1 Search the file or directory. Enter the criteria to search.



7.8.2 Reload and refresh the display.

7.9 Enter the description for selected file.



7.10 Click "Close" to finish.

Chapter 8 Advanced Setup

8.1 Click



8.2 Preference

8.2.1 Set the comfortable brightness and contract.

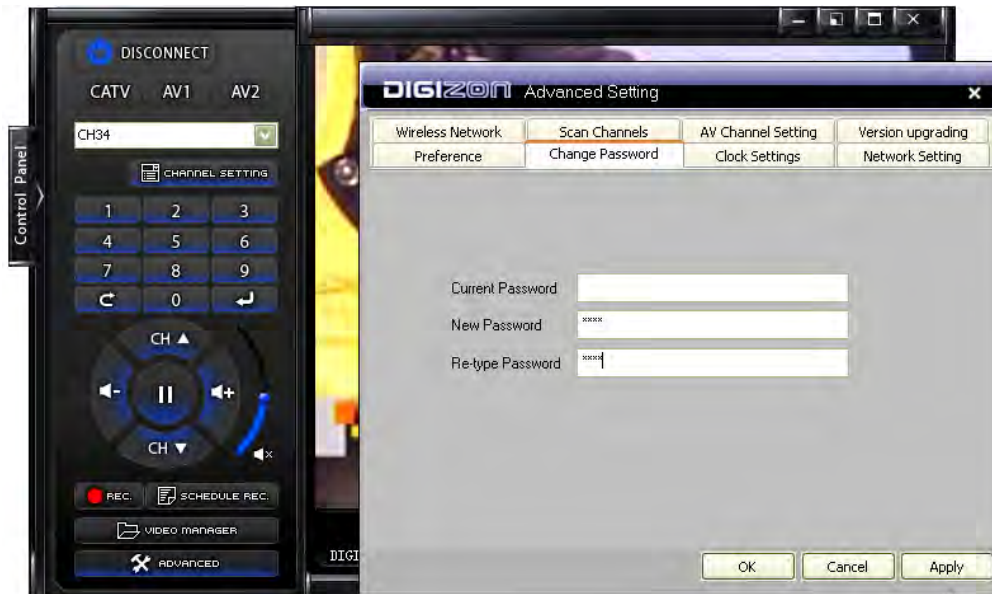
8.2.2 Video/Audio (The settings recommended)

Bandwidth	Resolution	Frame rate	Audio (kbit/s)
1 M kbps~	D1	1/1	90
512 kbps~	D1 CIF	1/1 1/2	90
250 kbps ~	CIF	1/1	45
64 kbps ~	QCIF	1/1	20



8.3 Change password

- 8.3.1 Enter current password, null as default.
- 8.3.2 Enter new password and retype to confirm.
- 8.3.3 The new password will be effective after rebooting.



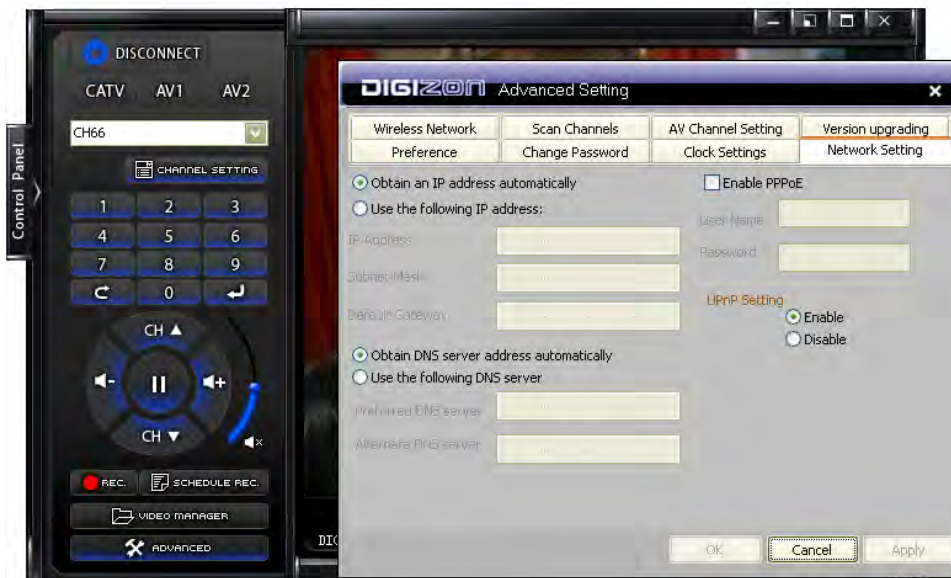
8.4 Clock setting

- 8.4.1 Set date, time, and time zone for DIGIZON.
- 8.4.2 It must be the local time of DIGIZON.



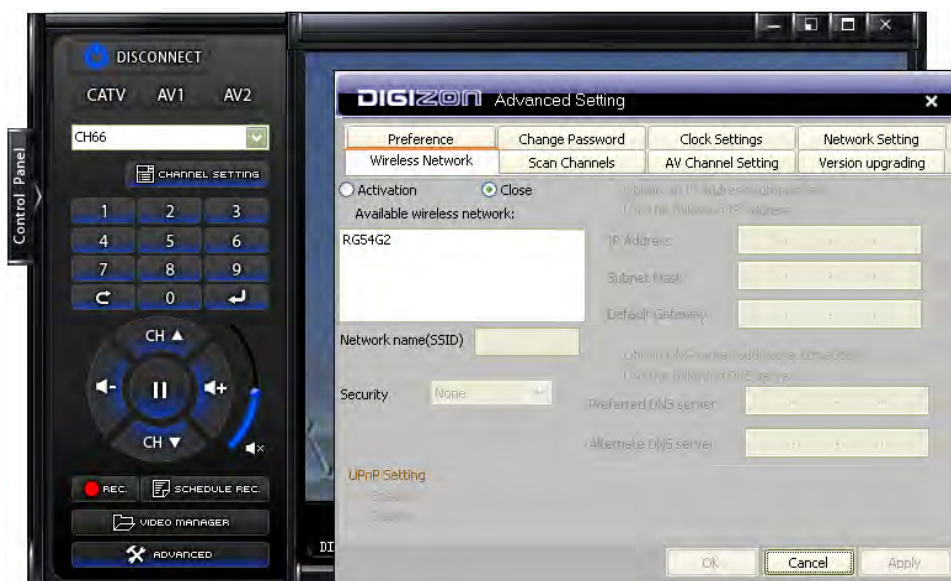
8.5 Network setting

- 8.5.1 The settings are for remote use through internet.
- 8.5.2 Assign the IP and DNS address for DIGIZON, if necessary.



8.6 Wireless network

- 8.6.1 Wireless connection is available for DIGIZON plus and DIGIZON Pro.
- 8.6.2 Check "Activation" on.
- 8.6.3 Select the AP (Access Point) from the list.
- 8.6.4 Select the security type of AP, and enter password if necessary.
- 8.6.5 Assign IP and DNS address, if necessary.



8.7 Scan channels

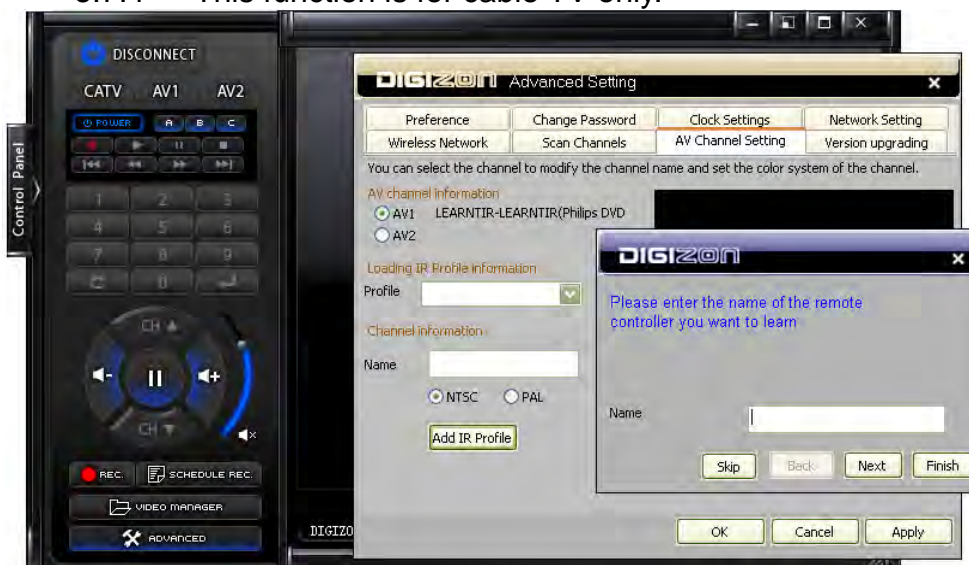
8.7.1 Select the region where DIGIZON locates. If none available, please select “Full Frequency Scan”.



8.7.2 Click “Start Scanning” to start.

8.7.3 It takes 5~10 minutes. When scanning, please stop any operation.

8.7.4 This function is for cable TV only.



Chapter 9 Troubleshooting

9.1 How to setup the IP of PC/Laptop installed DIGIZON player?

- 9.1.1 Click "Start Up" and click "Network Neighbor"
- 9.1.2 Click "View Network Connections"
- 9.1.3 Click "Local Area Connection"
- 9.1.4 Click "General" and click Internet Protocol (TCP/IP)
- 9.1.5 Change the IP address to 192.168.1.4 and click "Confirm".

9.2 How did DIGIZON go to internet without UPnP?

9.2.1 Virtual Server Configuration:

This is example of [SMCWBR14T-G](#)



9.2.1.1 Access the Router Portal

9.2.1.2 Advanced Settings => NAT => Virtual Server

9.2.1.3 Set up the LAN IP Address as DIGIZON IP and LAN Port: 40001, 41000 and 41002 to map Public Port

9.2.2 DMZ Configuration:

This is example of [SMCWBR14T-G](#)



9.2.2.1 Access the Router Portal

9.2.2.2 Security => Firewall => DMZ

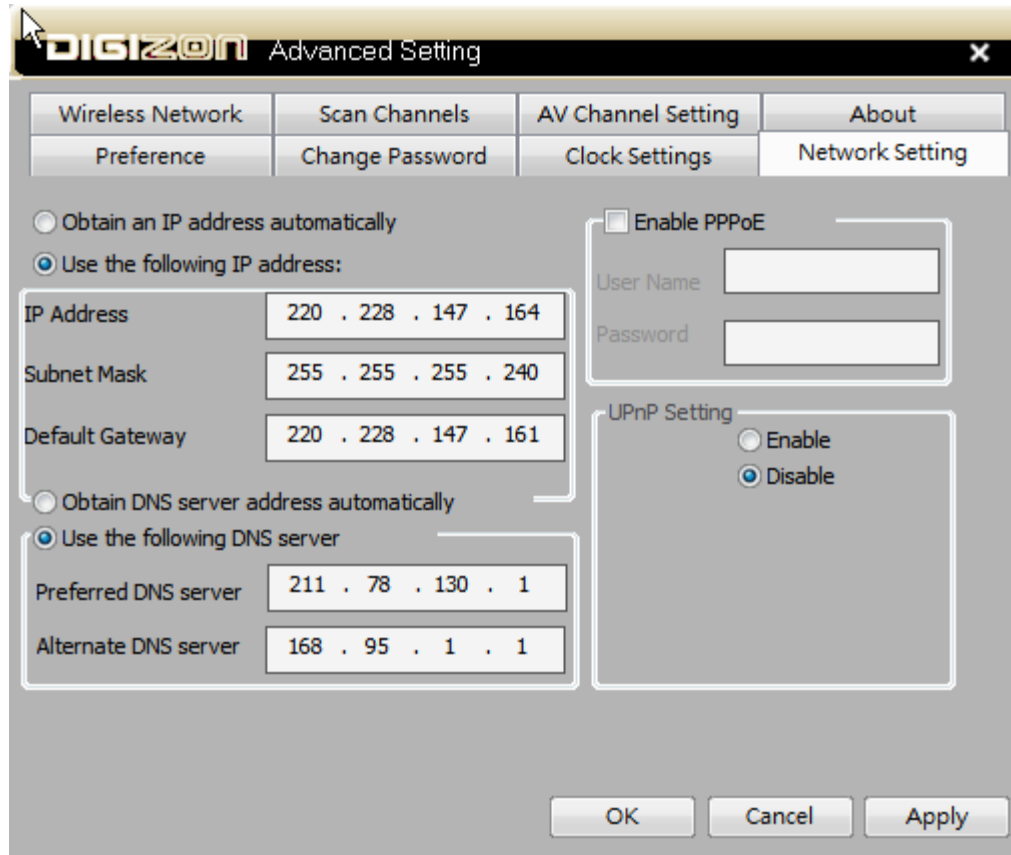
9.2.2.3 Set up Public IP Address (Check WAN IP) and Client PC IP Address (DIGIZON's IP)

9.3 How to connect DIGIZON with HUB not AP/Router?

9.3.1 Please prepare with a public IP for DIGIZON network setting

9.3.2 Access DIGIZON Player => Advanced => Network Setting

9.3.3



9.4 Video lags or audio sounds not smooth?

The video and audio quality depends on the bandwidth, refer to 8.2.2

9.5 Only audio, but no video?

9.5.1 Install DirectX 9C or above version,

9.5.2 Download address www.microsoft.com/windows/directx/default.mspx

9.6 Can't play the recorded files?

9.6.1 Recommend player on PC is Quick Time 7.

9.6.2 Download address www.apple.com/quicktime/download/win.html

9.7 Files split if recording for a long time?

9.7.1 For FAT 32, 2.0 GB file size is allowed.

9.7.2 The recording files splits into 1.9 GB for each.

9.8 The IR learning program responses OK but doesn't work?

Point IR remote controller to DIGIZON IR receiver closely to avoid any possible interference.

- 9.9 Login successfully but can not switch channels?
 - 9.9.1 DIGIZON allows only the first login user to control the player.
 - 9.9.2 The second client shares the video but control.
- 9.10 While wired and wireless connection enabled, which one is effective?
 - 9.10.1 DIGIZON prioritizes wired connection than the wireless.
 - 9.10.2 Remove RJ45 from DIGIZON and reboot to make the wireless connection effective.
- 9.11 Some USB storage devices can not work?

DIGIZON supports USB 2.0 only.
- 9.12 Login successfully, but there is no audio/video?
 - 9.12.1 Some anti-virus program may block DIGIZON streaming flow, add DIGIZON Player to the allowed list.
 - 9.12.2 Refer to anti-virus manual for details.
- 9.13 Player works abnormally in company, but well at home?
 - 9.13.1 The firewall may block the streaming, call MIS staff to get the permission.
 - 9.13.2 Keep the port 40001, 41000, 41002 opened.
- 9.14 The picture is out-of-sync?
 - 9.14.1 The color system (NTSC/PAL) of the video source must be correctly defined in DIGIZON.
 - 9.14.2 Refer to chapter 5 to set the color system.

Contact Information



KCS Digital

8F, No.69-8, Sec.2, Chung Cheng E. Rd., Tamshui Town, Taipei County, Taiwan

TEL : +886-2-77030980

FAX : +886-2-77030981

<http://www.KCSDigital.com>

Note to CATV System Installer— This reminder is provided to call the CATV systems installer's attention to Section 820-93 of the National Electric Code which provide guidelines for proper grounding and, in particular, specify that the Coaxial cable shield shall be connected to the grounding system of the building, as close to the point of cable entry as practical.

This device complies with Part 15 of the FCC Rules. Operation is subject to the following two conditions: (1) this device may not cause harmful interference, and (2) this device must accept any interference received, including interference that may cause undesired operation.

© Copyright 2007 by KCS Digital. All rights reserved

Federal Communication Commission Interference Statement

This equipment has been tested and found to comply with the limits for a Class B digital device, pursuant to Part 15 of the FCC Rules. These limits are designed to provide reasonable protection against harmful interference in a residential installation. This equipment generates, uses and can radiate radio frequency energy and, if not installed and used in accordance with the instructions, may cause harmful interference to radio communications. However, there is no guarantee that interference will not occur in a particular installation. If this equipment does cause harmful interference to radio or television reception, which can be determined by turning the equipment off and on, the user is encouraged to try to correct the interference by one of the following measures:

- Reorient or relocate the receiving antenna.
- Increase the separation between the equipment and receiver.
- Connect the equipment into an outlet on a circuit different from that to which the receiver is connected.
- Consult the dealer or an experienced radio/TV technician for help.

FCC Caution: Any changes or modifications not expressly approved by the party responsible for compliance could void the user's authority to operate this equipment.

This device complies with Part 15 of the FCC Rules. Operation is subject to the following two conditions: (1) This device may not cause harmful interference, and (2) this device must accept any interference received, including interference that may cause undesired operation.

This device and its antenna(s) must not be co-located or operating in conjunction with any other antenna or transmitter

IMPORTANT NOTE:

FCC Radiation Exposure Statement:

This equipment complies with FCC radiation exposure limits set forth for an uncontrolled environment. This equipment should be installed and operated with minimum distance 20cm between the radiator & your body.