

Instruction manual

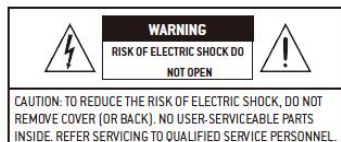
MP3/CD Bass Reflex Boombox with Bluetooth

MODEL: CD326BT



Important: Please read before using and keep for future reference.

Safety Warnings



The lightning flash with arrowhead symbol, within an equilateral triangle, is intended to alert the user to the presence of uninsulated "dangerous voltage" within the unit's enclosure that may be of sufficient magnitude to constitute a risk of electric shock.



The exclamation point within an equilateral triangle is intended to alert the user to the presence of important operating and maintenance (servicing) instructions in the manual accompanying the unit.

Safety

1. Read all the instructions carefully before using the unit and keep them for future reference.
2. Retain the manual. If you pass the unit onto a third party, make sure to include this manual.
3. To reduce the risk of fire, electric shock or product damage, do not expose this unit to rain, moisture, dripping or splashing. No objects filled with liquids, such as vases, should be placed on the unit.
4. To prevent the risk of electric shock or fire hazard due to overheating, ensure that curtains and other materials do not obstruct the ventilation vents. Make sure there is at least 20 cm of space above and at least 5cm of space on each side of the unit.
5. Avoid extreme degrees of temperature, either hot or cold. Place the unit well away from heat sources such as radiators or gas/ electric fires.
6. Do not use attachments or accessories which are not recommended by the manufacturer. They may cause malfunction or injury.
7. Unplug the unit from the mains socket during a lightning storm or when not used for a long period of time.
8. If the mains cable is damaged it must be replaced by the manufacturer, its service agent, or similarly qualified persons in order to avoid a hazard.
9. This unit is a Class II or double insulated electrical appliance. It has been designed in such a way that it does not require a safety connection to electrical earth.

Warning

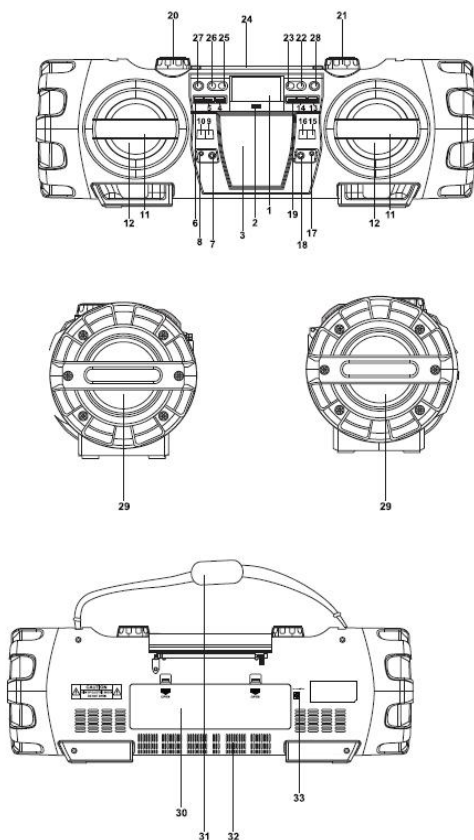
- The battery (battery or battery pack) must not be exposed to excessive heat such as sunshine, fire or the like.
- Do not place the unit on or near appliances (including amplifier or receiver) which may cause electromagnetic interference. If you do, it may adversely affect the operating performance of the unit.
- If you spill any liquid into the unit, it can cause serious damage. Switch it off at the mains immediately. Withdraw the mains plug and consult your dealer.
- Do not clean the unit with chemical solvents as this might damage the finishing. Use a clean, dry cloth.
- Never place any type of candle or naked flame on the top of or near the unit.
- To reduce the risk of electric shock, do not remove screws. The unit does not contain any user-serviceable parts. Please leave all maintenance work to qualified personnel.
- Check that the voltage marked on the rating label matches your mains voltage.
- The rating label is located at the rear of the unit.

Caution

CLASS 1 LASER PRODUCT
LUOKAN 1 LASERLAITE
KLASS 1 LASERAPPARAT

This Compact disc player is classified as a Class 1 LASER PRODUCT.
THE CLASS 1 LASER PRODUCT information is located on the bottom exterior.

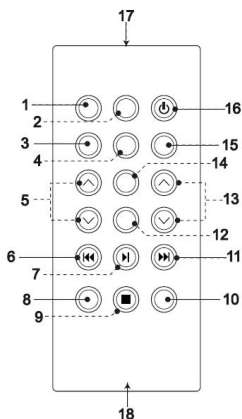
LOCATION OF CONTROLS



NAMES OF CONTROLS

1. Display
2. USB port
3. Remote control compartment
4. DIR/MEM./10 + button
5. DIR/MEM./10 - button
6. PROG/P-MODE button
7. 6.3mm MIC input jack
8. 3.5mm AUX IN jack
9. MIC Volume + button
10. MIC Volume - button
11. Speaker guard
12. Left/Right speakers
13. NEXT/FORWARD button
14. PLAY/PAUSE/PAIR button
15. GUITAR Volume + button
16. GUITAR Volume - button
17. 3.5mm headphone jack
18. 6.3mm guitar input jack
19. PREVIOUS/REVERSE button
20. VOLUME dial
21. TUNING dial
22. STOP/MENU button
23. ID3/INFO button
24. Telescopic antenna
25. EQ button
26. LIGHT button
27. FUNCTION button
28. POWER button
29. Left/Right Subwoofer
30. Battery compartment door
31. Carrying strap
32. Heat emission vents
33. DC IN jack

REMOTE HANDSET



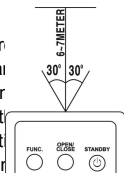
KEY FUNCTIONS:

1. FUNCTION KEY
2. MUTE KEY
3. MEMORY KEY
4. EQ KEY
5. Directory/10/M. UP/DOWN KEY
6. Previous/Reverse and Tuning- KEY
7. PLAY/PAUSE KEY
8. P-MODE KEY
9. STOP KEY
10. PAIR KEY
11. Next/Forward and Tuning + KEY
12. ID3 KEY
13. VOLUME UP/DOWN KEY
14. LIGHT KEY
15. PROGRAM KEY
16. STANDBY KEY
17. REMOTE TRANSMITTER
18. BATTERY COMPARTMENT

Note: Please pull battery protector before using.

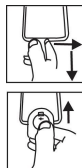
REMOTE CONTROL OPERATION

To operate the unit with the remote control, point the remote handset at the receiver sensor on the front panel and press the appropriate button on the remote handset. The remote works best within a range of 6 ~ 7 meters from the front panel at an angle of 30 degrees. Bright sunlight or room light conditions can interfere with remote control. If the remote operation is unsatisfactory or stops working entirely, first try replacing the remote batteries, then try reducing the room lighting conditions.



LITHIUM BATTERY INSTALLATION OF REMOTE CONTROL

- The remote control includes one CR2025 (3V) lithium battery.
- To replace the battery, gently push the clasp to the right direction according to the instruction and then pull out the battery compartment. Take the drained battery out and install a new lithium battery (CR-2025) in the compartment with the positive polarity upward. Then push the compartment back to its position with a “click” sound indicating installation finished.



POWER SOURCE

DC INPUT OPERATION

Plug the tail of supplied adaptor into DC IN Jack on unit and the plug into household AC outlet.

The batteries will be automatically disconnected.

DC OPERATION

Open the BATTERY COMPARTMENT DOOR. Install 10pcs UM-1/D size batteries (not included) into compartment. Please follow correct polarities as indicated.

CAUTION:

- Remove batteries if they are flat or not being used for a long period of time.
- Batteries contain chemical substances, so they should be disposed of properly.

BASIC FUNCTION

TURNING THE UNIT ON/OFF

Press the **POWER** button on unit or on remote control to turn the unit on or off.

SETTING THE FUNCTION MODE

There are 5 function modes; press the **FUNCTION** button on unit or on remote to change modes. The 5 modes are:

- FM MODE: Listen to FM radio broadcasts.
- AM MODE: Listen to AM radio broadcasts.
- CD MODE: Play compact discs (CD-audio or CD-MP3).
- USB MODE: Play MP3s from USB memory sticks.
- BLUETOOTH MODE: Stream audio from wireless players with Bluetooth®.

NOTE: The unit will automatically switch to AUX mode when a 3.5mm AUX cable is connected to the AUX input jack. Disconnect the cable to exit AUX mode, then

press **FUNCTION** button to choose other modes. (when the AUX cable is connected, **FUNCTION** button is unavailable.)

ADJUSTING THE VOLUME

1. Rotate the Volume control knob or press VOL-/VOL+ keys on the remote control to increase or decrease the volume level.
2. Press M. Vol + /M. Vol – button or press VOL MODE key twice on the remote control, then press VOLUME UP & DOWN keys to increase or decrease the microphone volume. The display will show “M. VOL”.
3. Press G. Vol + /G. Vol – button or press VOL MODE key three times on the remote control, then press VOLUME UP & DOWN keys to increase or decrease the guitar volume. The display will show “G. VOL”.

EQ FUNCTION

This unit has a built-in equalizer system, Press **EQ** button on unit or on remote control while playing to select different music style (sound tone): FLAT, JAZZ, ROCK, CLASSIC and POP and 3D.

ID3 System

When plays a MP3 file, press the **ID3** button on unit or on remote control, it will show “ID3 ON”, if the mp3 file is “ID3” format, it will automatically search the information of “TITLE NAME” “ARTIST NAME” and “ALBUM NAME” and show on the display. Press the **ID3** button on unit or on remote control to back to normal display.



HEADPHONE JACK

For private listening, insert a 3.5mm headphone (not included) into the HEADPHONE jack. The SPEAKER output would be automatically cut off.

CAUTION: LISTENING AT A HIGH VOLUME OVER A LONG PERIOD IS NOT GOOD FOR YOUR EARS.

PARTY LIGHT

To change the party light effects, press the **LIGHT** button. You can choose from different preset modes.

To disable the party light, press the **LIGHT** button until the lights turn off and the display reads “LIGHT OFF”.

FM/AM TUNING MODE (Radio)

Listen to FM/AM radio broadcasts. Press the **FUNCTION** button until the display reads FM or AM respectively.

- To optimize reception when listening to stations on the FM band, extend the telescopic antenna to its full length. To optimize reception for AM band stations, gently move the unit around, or position the unit in an open place.

• TUNING TO A RADIO STATION

If you know the station frequency that you want to tune to directly:

- Tune to a station by turning the **TUNING** dial. The station frequency is shown on the display.

To tune to a preset station:

- To tune to the next preset station, press the **DIR/MEM./10 +** button on unit or on remote.
- To tune to the previous preset, press the **DIR /MEM./10 –** button on unit or on remote.

AUTO PRESET MEMORY / SCAN

To scan for stations within reception range and save them to preset memory automatically, press and hold the **PLAY/PAUSE/PAIR** button on unit or **PLAY/PAUSE/SELECT** key on remote control. After the unit is finished scanning, the unit will automatically tune to preset number 1.

MANUAL PRESET MEMORY OPERATION

1. Rotate the tuning dial or press the **◀TUN.-** or **▶TUN.+** button to select the desired station that you want to save as a preset.
2. Press and hold the **PROG./P-MODE** button on unit or **MEMORY** key on remote, "P01" will flash on the display to indicate that you are saving the station as preset Memory 01.(To change the preset memory number, press the **DIR/MEM/10+** or **DIR/MEM/10-** buttons)
3. Press the **PROG/P-MODE** button to finish saving the station.
4. To save another station, repeat steps 1 to 3. You may save up to 30 FM stations and 10 AM stations.

CD MODE (CD and MP3 Discs)

Play CDs with audio or MP3 files. Press the **FUNCTION** button to select "CD MODE".

SUPPORTED DISC FORMATS

This unit can play all digital audio CD/MP3, finalized digital audio CD-Recordable (CD-R) discs, finalized digital audio CD-Rewritable (CD-RW) discs, and CD-DA formatted digital audio CD/CD-R/CD-RW discs.

LOADING A DISC

1. Press **PUSH TO OPEN** on the CD door to open it; the display will read "OPEN".
2. Place the compact disc into the tray with the label side facing up.
3. Close the CD door; the display will flash "TOC READ". Playback will start automatically after finish reading.

4. To remove the CD, press the **STOP** button to stop playback. *Wait for the CD to stop spinning completely!* Press **PUSH TO OPEN** on the CD door to open it. Remove the CD carefully taking care to handle it by its sides.

Notes:

- Make sure the disc is completely stopped before opening the CD door.
- To ensure good system performance, wait until the unit reads the disc completely before doing anything else.
- If the disc is unreadable or if no disc is loaded in the tray, the display will read "NO DISC".

PLAYING A DISC

Playback starts automatically from Track 1 after a compact disc has been loaded and read by the boombox.

- To pause playback, press the **PLAY/PAUSE/PAIR** button. The current track time will flash on the display.
- To resume playback, press the **PLAY/PAUSE/PAIR** button again.
- To stop playback, press the **STOP** button.

To skip tracks

Press the **NEXT** or **PREV** buttons to skip to the next or previous track respectively. Track numbers are shown on the display.

To scan quickly to a point in a track

Press and hold the **NEXT** or **PREV** buttons to quickly scan forward or in reverse through a track. The track time is shown on the display.

To skip tracks quickly (for MP3 discs, only)

To skip 10 tracks at a time, press the **DIR/MEM/10+** button to skip forward 10 tracks. Press the **DIR/MEM/10-** button to skip backward 10 tracks.

To select a desired folder (for MP3 discs, only)

To select a track in a folder, press and hold the **DIR/MEM/10+** button each time to skip forward a folder, then press the **NEXT** to select desired track.

PROGRAMING TRACKS



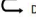
You can create a custom play list from your disc when playback is stopped. You can program up to 20 tracks for a CD disc and 99 tracks for an MP3 disc

1. While play is stopped, press the **PROG/P-MODE** button. The display will flash PROG and show "P01".
2. Use the **NEXT /PREV** buttons to select the first track to be saved to the program list, then press the **PROG/P-MODE** button to save. The display will now show the next program number (e.g., "P02").

3. Repeat step 2 to save more tracks to the program list until all tracks have been programmed.
4. Press the **PLAY/PAUSE/PAIR** button to start playing the program list from the beginning. The display will show which track is currently playing.
5. Press the **STOP** button on unit to stop program playback.
To clear the program, open the CD compartment lid, making sure that the disc has stopped spinning completely before you do so.

REPEAT/RANDOM/INTRO PLAY MODE (P-MODE)

To change the playback mode, press the **PROG/P-MODE** button during playback; the display will show the current P-MODE. Modes include repeat, random, and intro.

- : Repeat the current track.
-  ALL: Repeat all tracks.
-  DIR: Repeat all of the tracks in the current directory/folder (MP3 playback only).
- RANDOM: Play tracks in random order.
- INTRO: Play the first 10 seconds of each track.

To return to normal playback, press the **PROG/P-MODE** button until there are no P-MODE indicators on the display. P-MODE is also canceled when you stop playback.

USB MODE

Play MP3 files from USB memory sticks. Press the **FUNCTION** button to select "USB MODE".

PLAYING MP3s FROM USB MEMORY

1. Connect the USB memory stick to the USB port found on the front of the unit. The display will show the total number of playable tracks on the USB device. Playback will start automatically from Track 1.
2. To pause playback, press the **PLAY/PAUSE/PAIR** button. The current track time will flash on the display. To resume playback, press the **PLAY/PAUSE/PAIR** button again.
3. To stop playback, press the **STOP** button.

Proceed repeat play (repeat 1- repeat DIR - repeat all)/program play/random play/intro play operation as the same described in above "CD MODE" programming.

NOTICE:

- To prevent harmful interference, always connect USB devices directly to the unit. Do not use a USB extension cable to connect USB devices to the unit.

AUX OPERATION

1. The unit will automatically switch to AUX mode when a 3.5mm AUX cable is connected to the AUX input jack.
2. Insert the AUX line plug into the AUX IN jack(Φ3.5mm) on the player, music from the device would be amplified and exported from the speakers.

3. Adjust the volume of the main unit to your desired level.
4. Press **PLAY** of the external audio source (eg. MP3 player) to start playback.
5. Disconnect the cable to exit AUX mode.

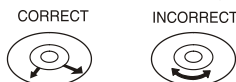
BLUETOOTH OPERATION

1. Press the **FUNCTION** button to select "BT MODE", the pair indicator light will flash.
2. Turn on the Bluetooth function on the device, scan the unit "EMERSON EPB-3001" and connect, then input the password 0000 if required, the light will light up to indicate connection done, press Play to start playback.
3. Rotate the Volume control knob or press VOL- and VOL+ keys on the remote control to increase or decrease the volume to your desired level.
4. Press the **PLAY/PAUSE/PAIR** button on unit or **PAIR** key on remote control to disconnect Bluetooth.

Note: The Bluetooth works best within 10 meters.

COMPACT DISC MAINTENANCE

1. Always use a compact disc bearing the mark as shown.
2. Notes on handling discs
 - ✧ Removing the disc from its storage case and loading it.
 - ✧ Do not touch the reflective recorded surface.
 - ✧ Do not stick paper or write anything on the surface.
 - ✧ Do not bend the disc.
3. Storage
 - ✧ Store the disc in its case.
 - ✧ Do not expose discs to direct sunlight or high temperatures, high humidity or dusty places.
4. Cleaning a disc
 - ✧ Should the disc become soiled, wipe off dust, dirt and fingerprints with a soft cloth.
 - ✧ The disc should be cleaned from the center to the edge.



FROM THE CENTRE TO THE EDGE

- ✧ Never use benzene, thinners, record cleaner fluid or anti-static spray.
- ✧ Be sure to close the CD door, so the lens is not contaminated by dust.
- ✧ Do not touch the lens.

SPECIFICATIONS

GENERAL

Power Requirement	DC IN 15V 3A
	DC 15V UM-1 (D-Size) x 10pcs
Power consumption	65 Watts
Dimensions.....	219(D) x 660(W) x 224 (H) mm
Operation temperature.....	+ 5°C - + 35° C

RECEIVER SECTION

Receiving Bands.....	AM/FM.ST
Frequency Range	AM 520-1710 KHz
	FM 87.5-108 MHz

COMPACT DISC SECTION

Optical Pickup.....	3-Beam Laser
Frequency Response	100Hz – 16KHz

AUDIO SECTION

Power output	Total 60W
--------------------	-----------

ACCESSORIES

Instruction Booklet.....	1
Remote Handset.....	1
AC adapter	1

FCC Notice:

NOTE: This equipment has been tested and found to comply with the limits for a Class B digital device, pursuant to Part 15 of the FCC Rules. These limits are designed to provide reasonable protection against harmful interference in a residential installation. This equipment generates uses and can radiate radio frequency energy and, if not installed and used in accordance with the instructions, may cause harmful interference to radio communications. However, there is no guarantee that interference will not occur in a particular installation. If this equipment does cause harmful interference to radio or television reception, which can be determined by turning the equipment off and on, the user is encouraged to try to correct the interference by one or more of the following measures:

- Reorient or relocate the receiving antenna.
- Increase the separation between the equipment and receiver.
- Connect the equipment into an outlet on a circuit different from that to which the receiver is connected.
- Consult the dealer or an experienced radio/TV technician for help.

WARNING: Changes or modifications not expressly approved by the party responsible for compliance could void the user's authority to operate the equipment.

This equipment complied with FCC radiation exposure limits set forth for an uncontrolled environment. This equipment should be installed and operated with minimum distance 20cm between the radiator & your body.