

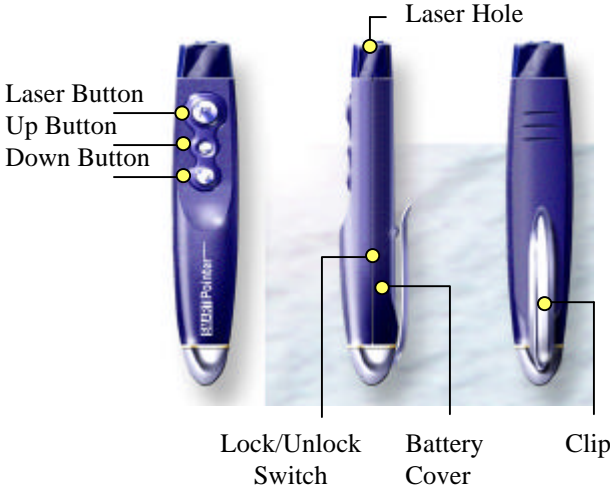
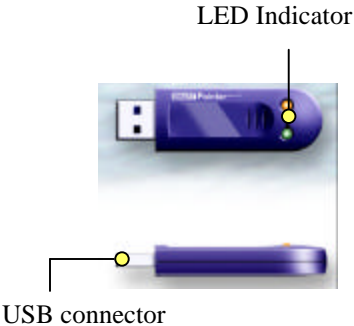
The Smart Pointer guarantees  
the easiest and most effective way  
to a better presentation



## ■ General Description

To make it your presentation better, the Smart Pointer integrates the functions of a page up/down and a laser pointer. The Smart Pointer's compact and complete design gives you the easy control of presentation slide up/down and mobility needed to concentrate on your presentation at a range of over 20m. Any software and PC programming is not required and a few second is taken for installation to use.

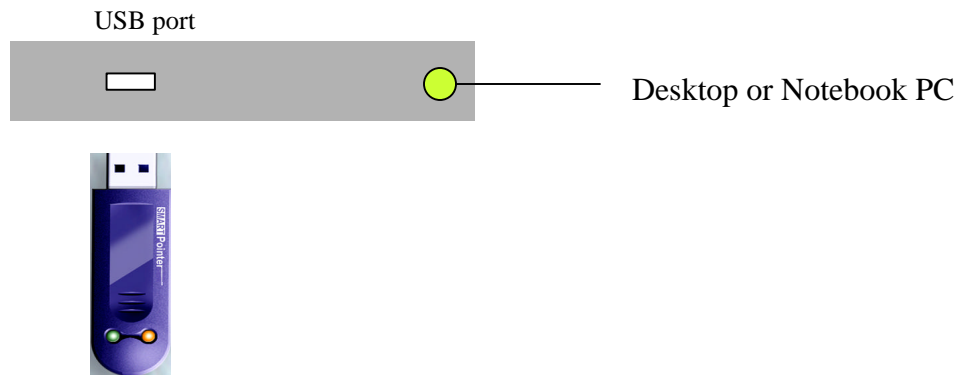
## ■ Terms and Explanations

Transmitter	Receiver
 <p>Diagram of the transmitter showing various components: Laser Button, Up Button, Down Button, Laser Hole, Lock/Unlock Switch, Battery Cover, and Clip.</p>	 <p>Diagram of the receiver showing the LED Indicator and USB connector.</p>
<p>Laser Button (<i>R</i>) : Laser on/off control            Up Button (▲): Slide up control            Down Button (▼): Slide down control            Lock/Unlock Switch : To change battery            Clip : To fix the transmitter to the bag or cloth</p>	<p>LED Indicator            Blinking : Connected and waiting for ID            Off : ID received and waiting for CMD            Off-On-Off : Everytime CMD received</p>

## ■ Key Features

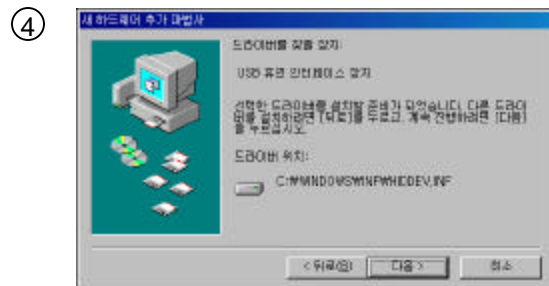
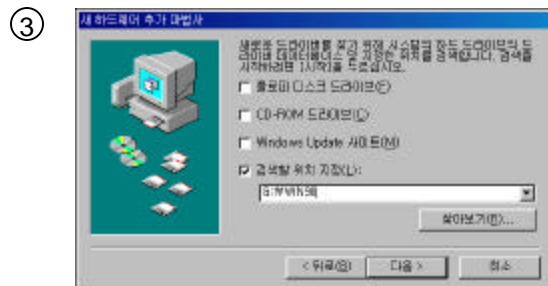
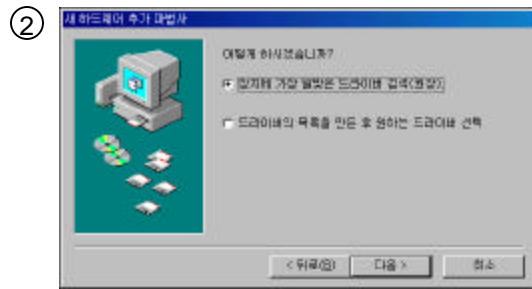
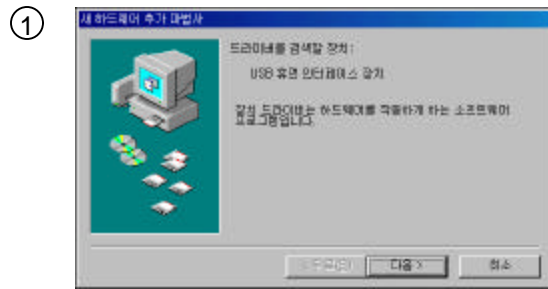
- ◆ Plug and play function
  - No PC programming and S/W
- ◆ Working on any computer
  - On any computer using a USB port
- ◆ Remote control range within 15m with a very low power
  - Eliminates LOS problems encountered with IR systems
- ◆ Transmitter identification
  - Use thousands of ID number to avoid multi-user interferences

## ■ Installation and Usage

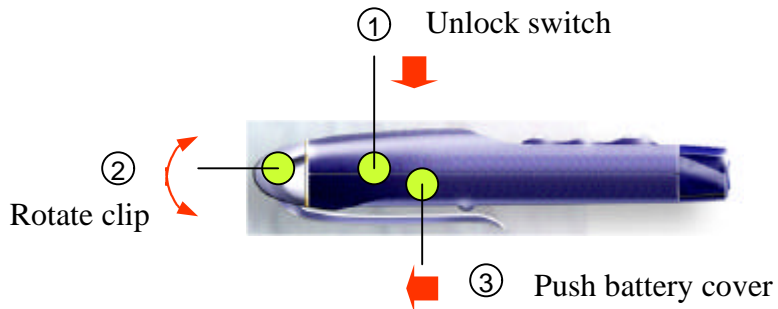


- ① When you plug a receiver into a USB port, you will see LED indicator is blinking.
- ② Push a either down (▼) or up (▲) button in the transmitter to implant user ID. When ID is set, LED goes to command waiting state.
- ③ Begin your presentation.

## For Only WIN98 Users



## ■ Battery Change



## ■ Technical Specifications

	Laser Pointer with Mouse Control (Transmitter)	Wireless Mouse Control Interface (Receiver)
Radio Frequency	315 MHz (USA, Asia), 433.92 MHz (Europe)	
Laser Module	Wavelength: 670nm (Class IIIa) Output Power: 2.5± 0.5mW	
Interface		USB HID Spec., Ver.1.1
Supported OS		Win98/SE/Me/2000/XP, Mac, Linux, WinCE
Battery	Alkaline, 12V/23A	USB Bus-powered
Operating Current	40mA (LM), 15 mA (RF)	10 ~ 12 mA
Enclosure	Molded plastic (violet, silver, gray, ordered colors)	
Dimension	115mm(L) × 18mm(H) × 19mm(W)	65mm(L) × 7mm(H) × 20mm(W)
Weight	20 grams (w/o battery)	10 grams

## **FCC Statement**

This equipment has been tested and found to comply with the limits for a Class B digital device,

pursuant to Part 15 of the FCC Rules. These limits are designed to provide reasonable protection

against harmful interference in a residential installation.

This equipment generates, uses and can radiate radio frequency energy and, if not installed and used in accordance with the instructions, may cause harmful interference to radio communications. However, there is no guarantee that interference will not occur in a particular installation. If this equipment does cause harmful interference to radio or television

reception, which can be determined by turning the equipment off and on, the user is encouraged to

try to correct the interference by one or more of the following measure:

- Reorient or relocated the receiving antenna.
- Increase the separation between the equipment and receiver.
- Connect the equipment into an outlet on a circuit different from that to which the receiver is connected.
- Consult the dealer or an experienced radio/TV technician for help.
- Shielded cables must be used to comply with FCC regulations.

## **WARNING**

Changes or modifications not expressly approved by the party responsible for compliance could void the user's authority to operate the equipment.