



H.265 IP Video Doorbell



POE



2.4GHz WiFi



Full duplex



Record



Camera



Unlock



Full HD



Night Vision



Motion Detect



Multi-user



Call

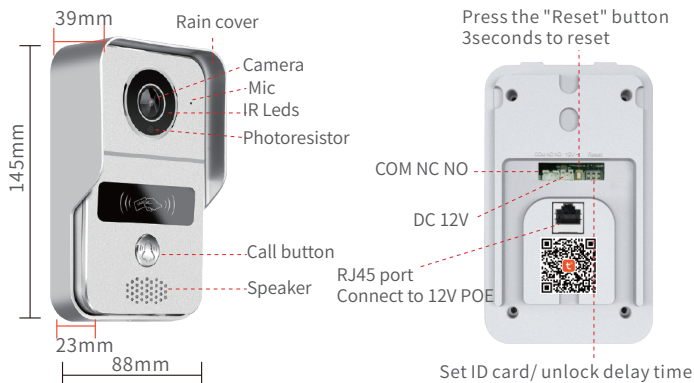


Playback

1 Function

Network	2.4G WiFi 802.11 b/g/n or wired network
Power adapter	DC12V or power by connect 12V POE
Function	Full duplex talk, Take photo, Take video, Unlock
Unlock	Unlock by remote control, ID Card or APP
External memory	MicroSD card up to 256GB
Resolution	2Mega pixels
View angle	140 Horizontal angle
Night vision	IR CUT no color deviation, B/W night vision
Alarm message	Push picture to APP when motion detection or call
Playback	Video recording after the call or motion detection
Third-Party Services	Amazon echo, Google Home, Cloud storage

2 Specification



3 Parts List

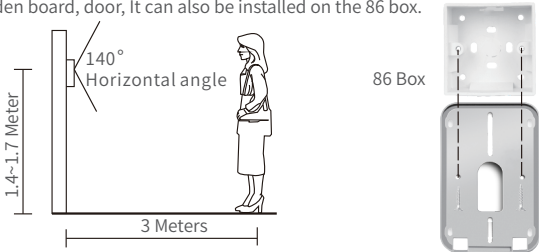


4 System working diagram



5 Installation diagram

The doorbell is installed at a height of 1.4~1.7 meters, try to avoid the sunshine and rain, Using 2 screws or tape fixed the doorbell on the wall, wooden board, door, It can also be installed on the 86 box.



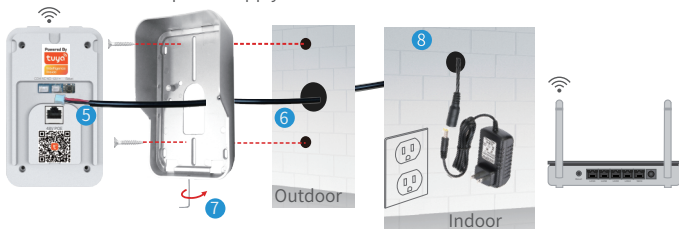
Use the drill bit to drill three holes. One hole is large enough to pass through the LAN cable, use anchors if you install video doorbell on brick or concrete.



Option 1: Connect doorbell to WiFi and 12V power supply.

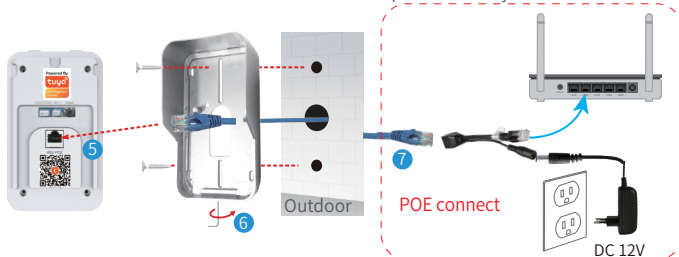
Make sure that have a strong WiFi connection at the location of video doorbell.

5. Plug the DC cable into the power socket
6. Pass the DC cable through the hole on the wall
7. Plug the rain cover on the host and fix the bottom screws.
8. Connect the 12V power supply to the female end of the DC cable



Option 2 (recommended): The network cable is connected to a standard 12V POE switch, The length of the network cable is less than 100 meters.

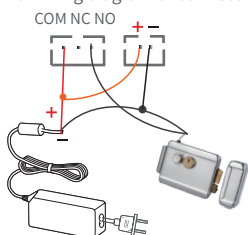
5. Connect the network cable to the network port of the doorbell
6. Plug the rain cover on the doorbell and fix the bottom screws
7. Connect the doorbell via LAN Cable at RJ45 port to POE injector and into Router.



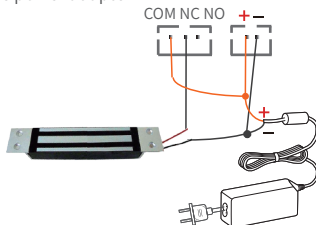
6 Unlock settings

Please check the specification of electric current for existing electronic lock, as the charger supplied is for a 12V power supply.

1. Wiring diagram of connect single power adapter

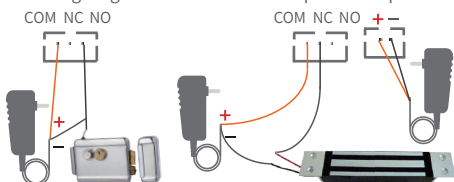


Power on wiring diagram

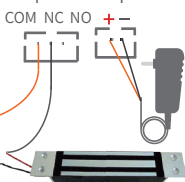


Power off wiring diagram

2. Wiring diagram of connect double power adapter.



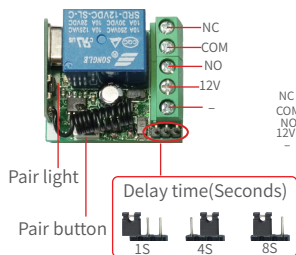
Power on wiring diagram



Power off wiring diagram

Position	Delay time
1S	4S
8S	16S

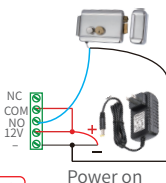
3. Unlock controller wiring diagram (optional)



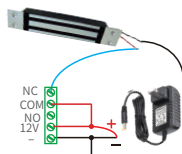
Pair light

Pair button

Delay time(Seconds)



Power on



Power off

7 Device pairing

7.1 Pair indoor chime with smart doorbell

1. Long press the "volume" button of indoor chime until the light stays on, then long press the "call" button of IP video doorbell to pair.
2. Clear the pairing

Press and hold the "Volume" button of indoor chime without connecting the power supply, then connect the power supply until the light stays on.

7.2 Pair unlock control with smart doorbell

1. Press the "pair" button of the unlock control, the pair light will flash once, then press the "Unlock" icon on the app, the pairing light will continue to flash.
2. Then press the "pair" button of the unlock control again, the light will stop flashing, then press the "Unlock" icon on the app again, the pairing light will flash several times. The pairing is successful.
3. Clear the pairing
Press the "pair" button on the unlock control for longer than 3 seconds until the light on to the light off.

7.3 Pair remote control with unlock control

1. Press the "pair" button of the unlock control, the pair light will flash one time, then press the "unlock" button of the remote control, the pair light will flash continuously.
2. Then press the "pair" button of the unlock control again, the pair light stops flashing, then press the "unlock" button of the remote control again, the pair light will flash several times. The pairing is successful.

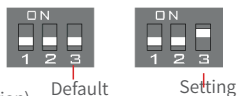
8 RFID Card Settings

8.1 Setting the Management Card

The smart doorbell is supplied with 1x yellow add card, 1x red delete card and 5x blue user cards.

Ensure that the 3 switches are all set to off (bottom position).

Then turn off power of Smart doorbell by removing power and if applicable LAN cable, and set the position 3 switch to ON and then turn power of doorbell on again. You are now in management mode and the red and blue light will illuminate on RFID front panel. Swipe the yellow add card and then the doorbell will beep to confirm. Then swipe the red delete card and the doorbell will beep and then the light will go off.



8.2 Add users and remove users

Turn the power to the doorbell off, by removing power and LAN cable if applicable, and reset the switches to default (all 3 switches to off/bottom). Connect the doorbell power on again.

Swipe yellow add card, and then light will illuminate and beep. Then swipe blue user card to activate, then light will illuminate and beep to confirm.

To remove the user, swipe the red delete card, followed by the applicable blue user card.

Troubleshooting:

- o Note that you cannot delete a user card if the card has not been added or deleted already.
- o Likewise you cannot add a user card, if the card has been added already to another RFID access point.
- o If you hear 3 beeps, then there is either an issue with the card or a mistake in the operation.

9 App Download

1. Search "Tuya Smart" or "Smart life" from APP store or Google Play according to phone system.
2. Scan the QR code to download.



10 Register & Login

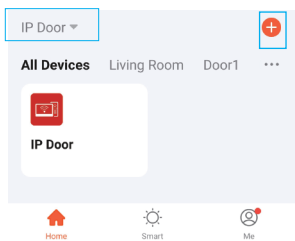
1. Please register when using APP for the first time.
2. After logging on the APP, please add devices after creating a family.
At the bottom right corner of the APP homepage, click "Me" -> "Home Management" -> "Create a home", fill in the information and save it. the setter will become the family owner, you can set home owner or common members.
3. After the home owner adds the device, the home members will add the device automatically. After adding this doorbell, all home members have unlock function than shared accounts.
You can add 20 administrators or home members.
4. The video doorbell is a device with a higher security level, the device must be removed from the original account before it can be bound to another account.

11 Add device to APP

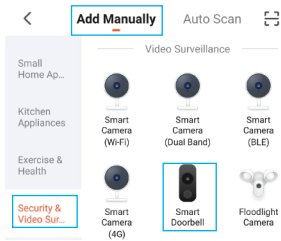
- 1 Click "+" on the top right of the homepage.

11.1 QR code and EZ Mode connection if doorbell connect to WiFi

- 2 Select "Add Manually"->"Security & Video Surveillance" -> "Smart Doorbell".



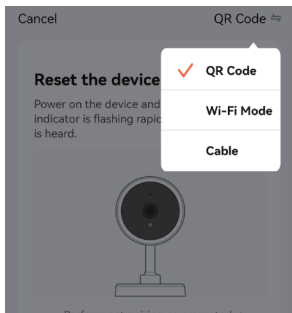
1



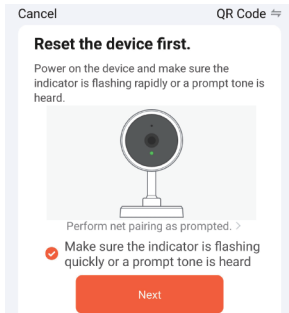
2

- 3 Select "QR Code".

- 4 The blue light of the doorbell flashes quickly, after checking, click "Next".



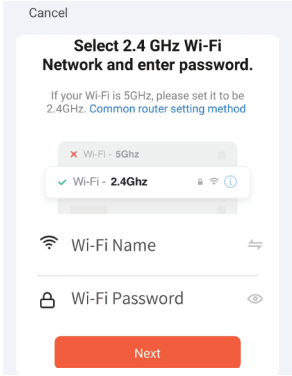
3



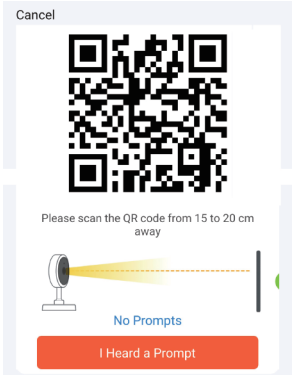
4

The doorbell only supports 2.4G WiFi, not 5G WiFi signal!

- 5 Select 2.4GHz WiFi, enter the WiFi password, and click "Next".
- 6 A QR code appears in the APP. Please scan the QR code from 15 to 20cm away. After you hear the doorbell prompt, click "I Heard a Prompt".

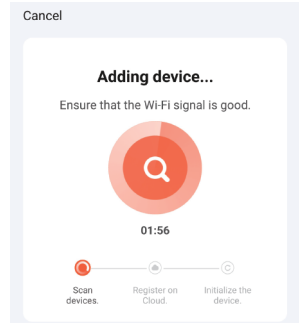


5

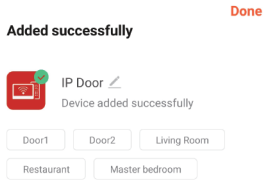


6

- 7 Enter the "Adding device..." then "Scan devices." -> "Register on Cloud" -> Initialize the device".
- 8 After the completion, it shows that the added successfully, you can modify the device name, and click "Done" to finish the adding the device.



7

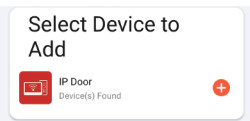
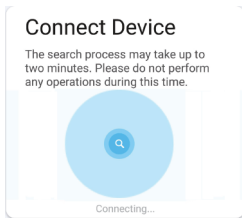
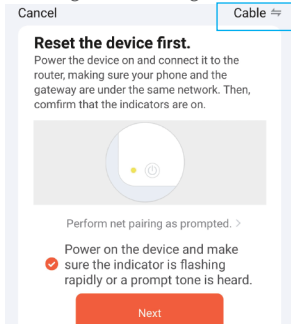


8

11.2 Wired network connection

1 "Manually add" -> "Cable"

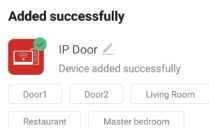
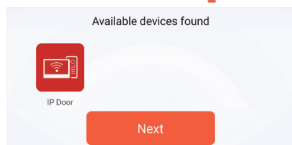
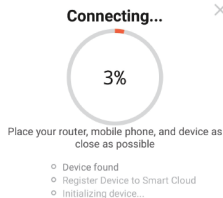
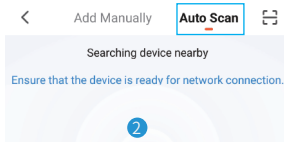
- 1 Click "+" on the top right of the APP homepage.
- 2 Select "Add Manually" -> "Security & Video Surveillance" -> "Smart Doorbell".
- 3 Select "Cable". After checking, Click "Next" if the blue light of the doorbell flashes quickly.
- 4 Waiting for connecting.
- 5 Select Device to Add.



- 6 Wait for "Device found" -> "Register to Cloud" -> "Initializing device".
- 7 After the completion, it shows that the addition is successful, you can modify the device name, and click "Finish" to enter the video interface.

2 "Auto Scan"

- 2 Select "Auto Scan".
- 3 Select device to be added and click "Next".
- 4 Wait for the connection.
- 5 Add successfully after click "Done".



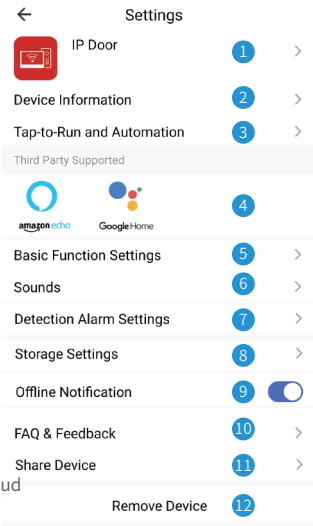
12 View live video

Click on the device to enter the living screen,
You can take photos, talk, video, unlock, playback(TF Card), and view albums.



- Unlock: Unlock and save all records.
- Message: Take photos and videos during incoming calls or motion detection.
- Cloud: The photos and videos stored in the cloud server during incoming calls or motion detection, do not worry about losing the doorbell.

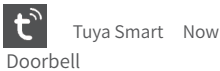
Click the button in the upper right corner to enter the setting interface.



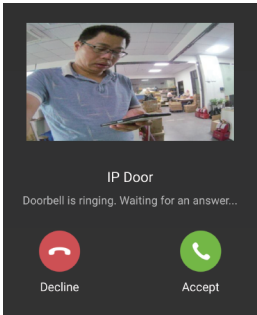
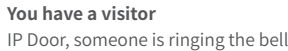
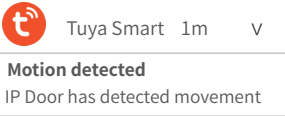
- 1 Modify icon, name, location of device.
- 2 View IP address, ID, time zone.
- 3 Configure the device automation.
- 4 Connect Amazon echo or Google Home.
- 5 1 Turn on/off the light of the doorbell button 2 The screen horizontal mirroring.
- 6 Adjust the volume of the doorbell
- 7 Motion detection on/off, set the alarm sensitivity and the alarm time period.
- 8 Check the capacity of the memory card, and format the memory card.
- 9 The device will push the alarm information list to the APP after 30 minutes
- 10 Please check the common problems carefully.
- 11 Enter the mobile phone number or email address of the user you want to share, click "Finish", the shared user cannot unlock.
- 12 After removing the device, the device will not be displayed on the device list

13 Ring the bell and Motion Detected

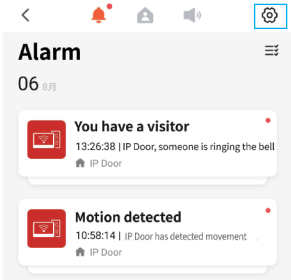
1. After the visitor presses the call button, push notifications online



2. The mobile phone standby state is pushed notifications as follows

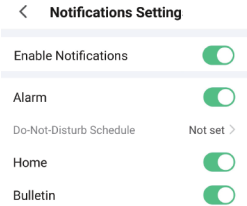
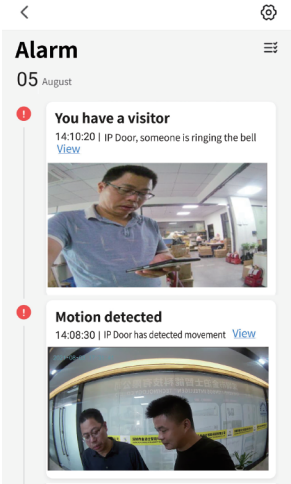


Click the "Settings" icon in the upper right corner to enter the notifications push settings



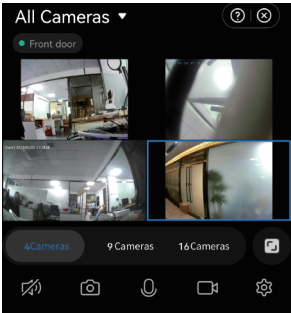
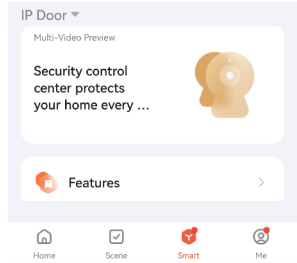
- 2.1 Click the "Motion detected" to enter the alarm message

- 2.2 Click the "You have a visitor" to enter the living video.



14 Multi-Video Preview

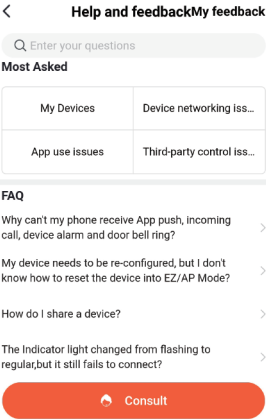
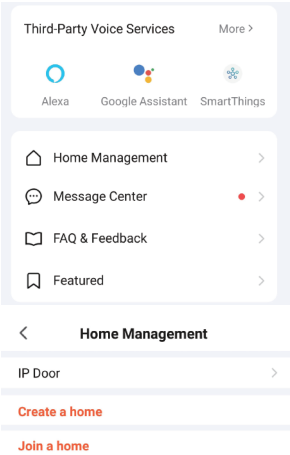
If the APP is connected to more than 1 video device. Multiple devices can be viewed at the same time.



15 Help and service

Users can click "Me" of homepage on the APP to enter "service and help".

- 1. "Voice third-party service", you can choose multiple smart product voice control products, each third party, the third-party service have detailed connection tutorials.
- 2. "Home Management" can create a home or join a home and set permissions
- 3. "Message Center" can view alarm information
- 4. If you are not familiar with the app or device, pls check "Help and Feedback".



FCC WARNING

This device complies with part 15 of the FCC Rules. Operation is subject to the following two conditions: (1) this device may not cause harmful interference, and (2) this device must accept any interference received, including interference that may cause undesired operation.

Any changes or modifications not expressly approved by the party responsible for compliance could void the user's authority to operate the equipment.

NOTE: This equipment has been tested and found to comply with the limits for a Class B digital device, pursuant to Part 15 of the FCC Rules. These limits are designed to provide reasonable protection against harmful interference in a residential installation. This equipment generates, uses and can radiate radio frequency energy and, if not installed and used in accordance with the instructions, may cause harmful interference to radio communications. However, there is no guarantee that interference will not occur in a particular installation.

If this equipment does cause harmful interference to radio or television reception, which can be determined by turning the equipment off and on, the user is encouraged to try to correct the interference by one or more of the following measures:

- Reorient or relocate the receiving antenna.
- Increase the separation between the equipment and receiver.
- Connect the equipment into an outlet on a circuit different from that to which the receiver is connected.
- Consult the dealer or an experienced radio/TV technician for help.

To maintain compliance with FCC's RF Exposure guidelines, This equipment should be installed and operated with minimum distance between 20cm the radiator your body: Use only the supplied antenna.