

FCC/MELLON

SEP 11 1998

FCC ID: FSUGEPEN

EUT: TABLET

KEY SYSTEMS CORP.

USER'S MANUAL

EXHIBIT D

=====
=
Using the Genius Tablet Software
=====
=

=====
CONTENTS
=====

- 1. Windows Software Installation
- 2. Setup Modifications
- 3. Tablet Uninstallation
- 4. AutoCAD /ADI Installation

=====
1. WINDOWS SOFTWARE INSTALLATION
=====

- 1) Connect the Genius tablet to your computer.
- 2) Turn on your computer, Windows NT/95/3.x will start.
- 3) Insert the backup copy of your tablet diskette to floppy drive A:
(or B:).
- 4) Select Run under the Start button (for Windows NT4.x or 95) or from
the Program Manager/File Manager (for Windows NT3.5x or Windows 3.
x).
Type A:\SETUP (or B:\SETUP) and click OK.
or
Find A:\setup.exe (or B:\setup.exe) in My Computer or Windows
Explorer and double click (for Windows NT4.x or 95).
Follow the instructions on the screen.
- 5) Restart Windows to activate your tablet.

=====
2. SETUP MODIFICATIONS
=====

The Windows setup procedure expands the following files from the tablet diskette to the system.

--- WINDOWS NT SETUP MODIFICATIONS ---

- 2) files copied to the WIN31 subdirectory:
gtablet.ini (ini file)
- 3) Some files about help and readme copied to the destination directory
(ie. C:\gtab31)
- 4) Some files necessary for tablet uninstallation are copied to the
"destination directory\uninst" (ie. C:\gtab31\uninst)
uninst.exe (tablet uninstall execute file)

=====**3. Tablet Uninstallation**=====

The uninstall program will remove all tablet driver files.

--- Uninstall tablet from Windows NT3.5x /Windows 3.x ---

Step 1. Select Genius Tablet group in Program Manager\Startup.

Step 2. Double Click on the "Uninstall Genius Tablet" item.

--- Uninstall tablet from Windows NT4.x /Windows 95---

Method 1:

Click on the Add/Remove Programs icon in the Windows NT4.x/95 Control Panel, then select "Uninstall Genius Tablet" and press the Remove button.

Method 2:

Click the Start button and select Programs. Then select Genius Tablet and double click on "Uninstall Genius Tablet".

=====**4. AutoCAD /ADI Installation**=====

* This is a protected-mode *DOS* driver for AutoCAD/386 for DOS. This driver is NOT necessary if you are using AutoCAD for Windows Release 12 or 13. This AutoCAD DOS driver is compatible with ADI version 4.2 (AutoDesk Device Interface).

To begin the ADI installation:

- 1) Go to the \ADI directory and copy all the files there to an empty floppy disk. Then change to that disk (A:) and type the following:

About Genius Tablet

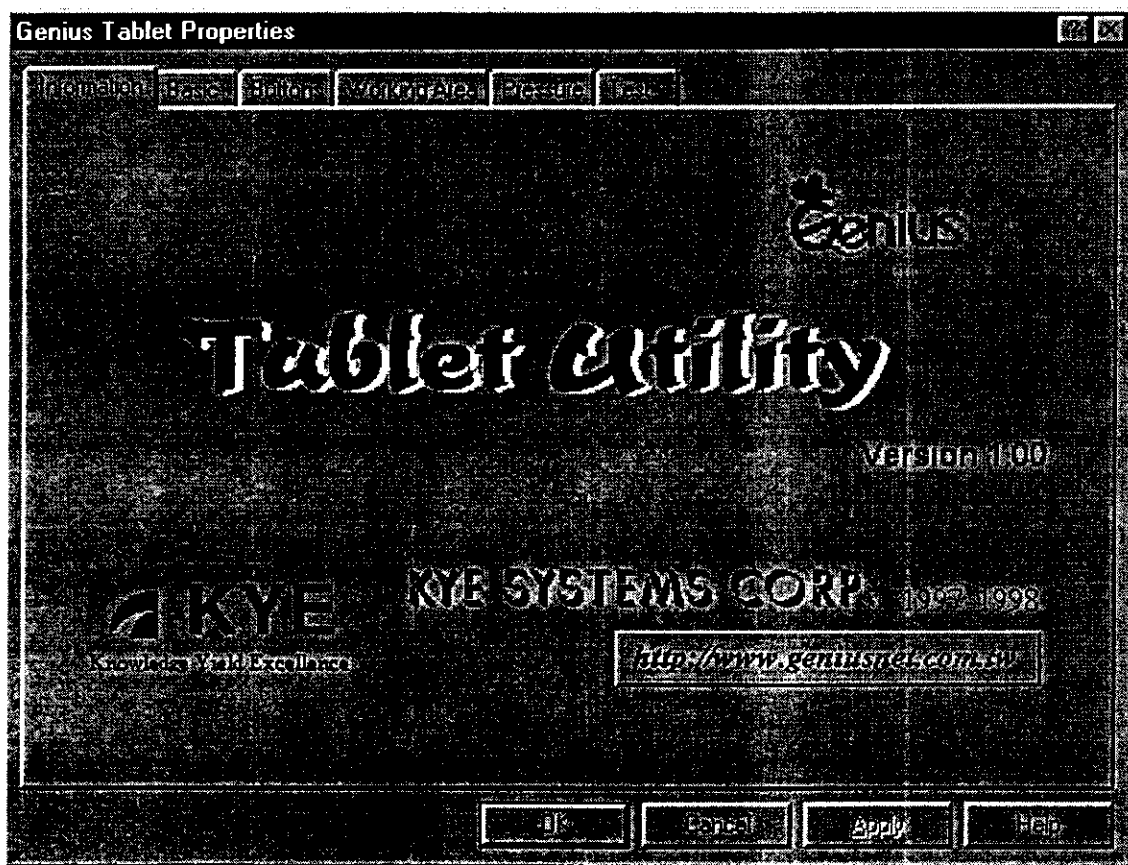
Genius Tablet is a graphics tablet used to create or reproduce diagrams, drawings, building layouts, maps, etc. You can then save these graphics into your computer for other uses.

Using this tablet, you can:

- Trace anything; pictures, drawings, photos, maps, etc.
- Draw freehand; achieve precision and accuracy
- Move the puck (or stylus) to select commands on the template, or move objects on the screen
- Create a symbol library for your most often used symbols using AutoCAD

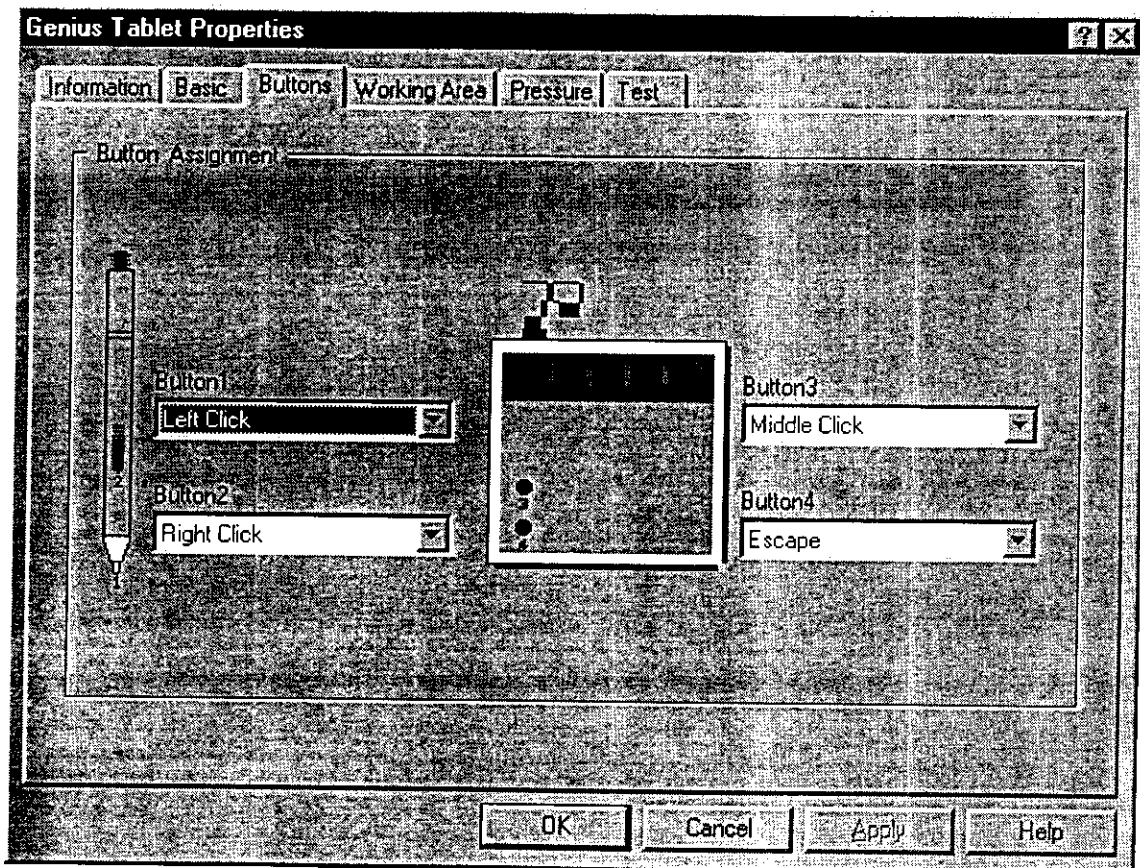
General Information

The Information Folder has general information about the Genius Tablet such as version, corporation name, etc.



Use the Button Assignment Function

The Button Assignment function allows you to change the function of the buttons on your pointing device. Select which pointing device you are using from the Pointing Device list. This would allow you to change the functions assigned to the different buttons on that device. Simply pick the button in the Assignment area that corresponds to the pointing device button you wish to change and then select from the function list the function you wish to assign to that button. You can set the function of your button as Left Click, Right Click, Middle Double Click, Copy, etc.



Pressure

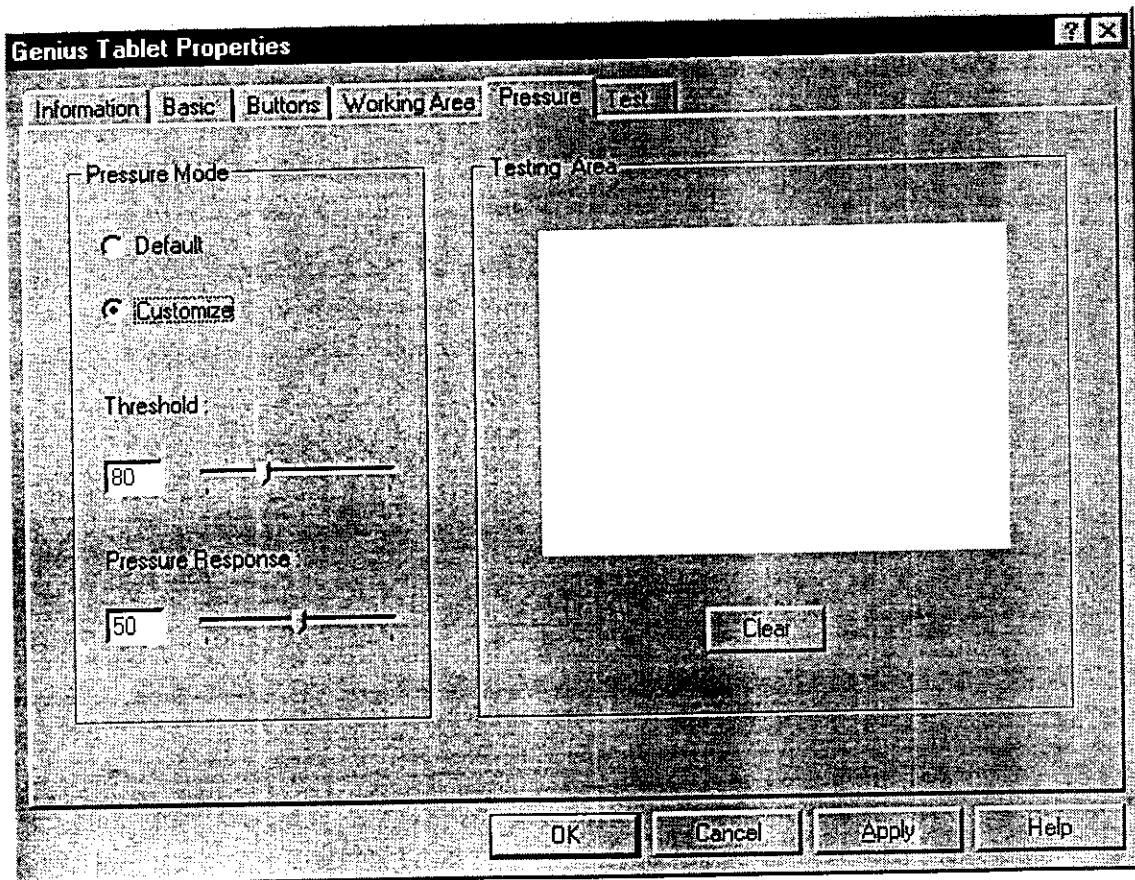
For the WizardPad, you can use the Pressure folder in the Genius Tablet Control Panel.

If you want to adjust the pressure, click "Customize in Pressure Mode area", then you can customize the feel of your pressure-sensitive pen by setting these options.

Threshold allows you to define how hard you have to press on the tip of the pen before it "reads" a "click," and the function assigned to it is executed. The threshold can be set from 0 to 255.

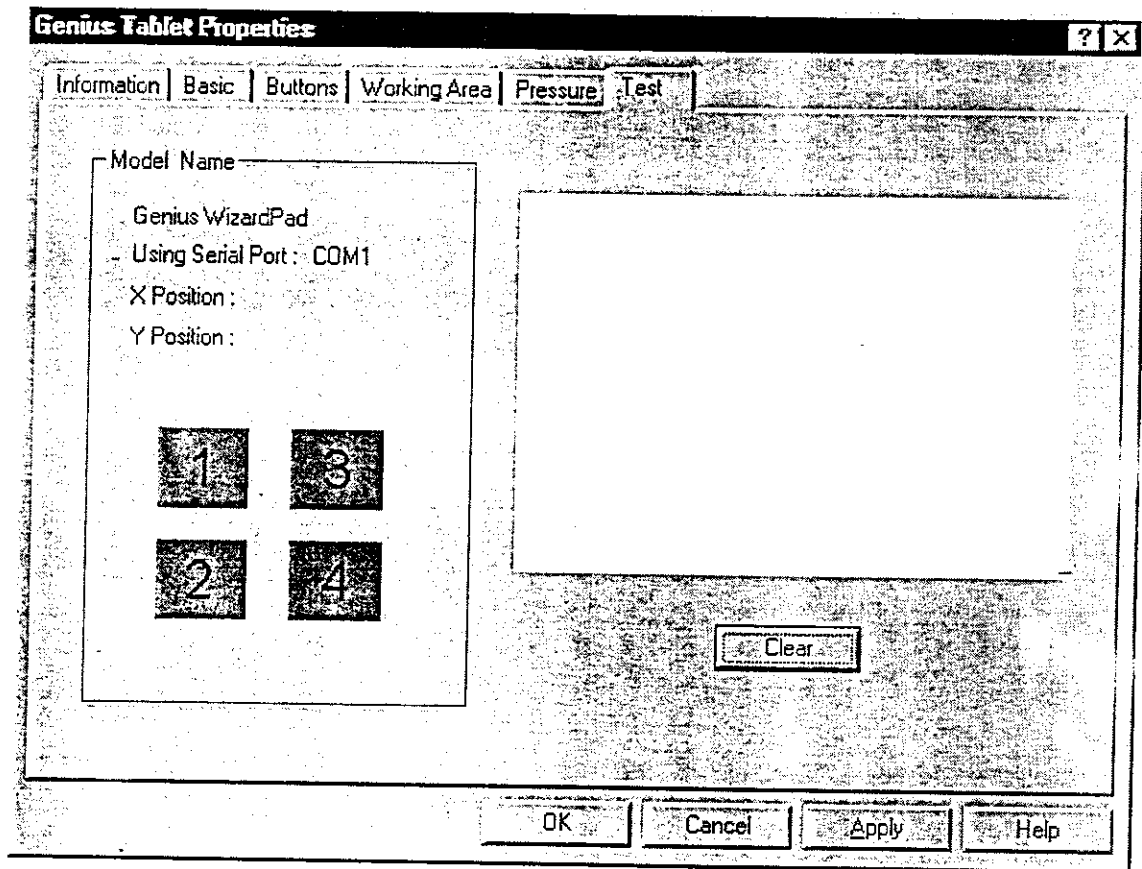
Pressure Response allows you to set how soft or firm the pen feels when drawing. The pen is harder when you increase the number.

The Test Area is a small pressure-sensitive drawing area that allows you to test how the pen reacts to the options in the control panel. You can click on "clear" to clear the area.



Test Your Buttons

In this area, you can verify if all of your pointing device buttons are operating properly. Move your pointing device around the tablet and press the buttons (and the pen tip, if using a stylus). You will see the position of the cursor on the screen in the Model Name area, and the button in this area will flash to respond to the button presses. When you move your puck in the test area on the right side, you will see trails remain responding your button's movement. Click on "clear" to clear this area.



Adjust Working Area

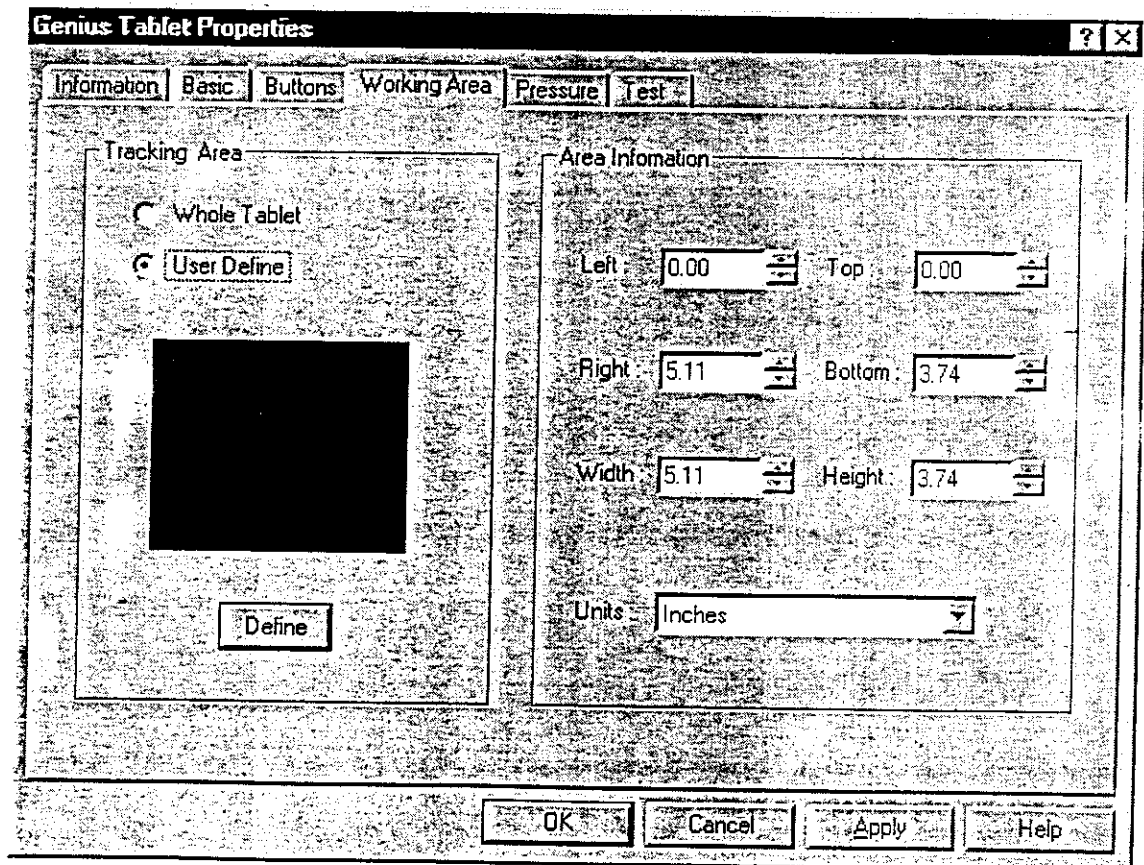
The default option is the Whole Tablet.

When the Tracking Mode in the Basic folder is Absolute, you can define the tracking area as your require. This is especially useful if you have a large tablet and you want to define a smaller active area so you don't have to move the pointing device around so far on the tablet.

In order to set the tracking area:

- 1) Choose the Preserve Aspect.
- 2) Click on the Define button, then the define area will turn grey.
- 3) Click on any button in the define area, drag the puck, then click the button again. The area will be defined. Some information about the defined area such as Top, Bottom, Right, Left, Width, Height will appear in the Area Information. You can change the units from inch to centimeters. If you change it ,the number information will also be changed.

You can input the number of Left, Top, Right, Bottom, Width and Height or click on these up-down controls in the Area Information as you require, then the working area will be defined.

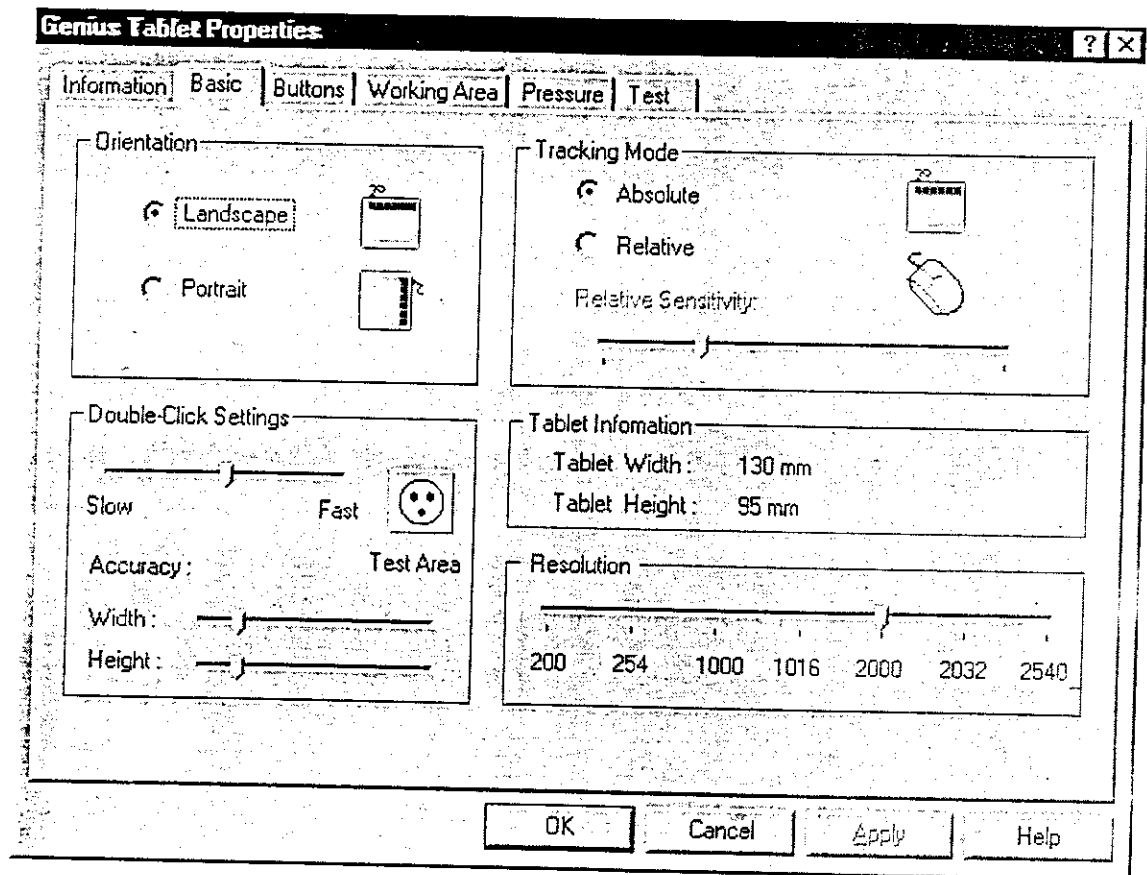


Changing the Tablet Orientation

Orientation allows you to rotate the Genius Tablet 90 degrees. Landscape is the normal operating position (with the tablet's interface cables exiting the top of the tablet). Selecting Portrait allows you to rotate the tablet 90 degrees clockwise from the normal operating position (so the tablet's interface cables would be exiting from the right hand side of the tablet). Try changing to portrait orientation if you prefer using your tablet in a vertical orientation, like a typical sketch pad.

Double-Click Test

In the Double-Click Test Box, you can set the widest and highest distance between the two points of double click and you can set the speed of double click by dragging the pointer on the slider bar or clicking on the slider bar. Then test the speed in the "Smiling" area.



Tracking Mode

The Tracking Mode function allows you to switch how the Genius Tablet moves the screen cursor.

The Absolute tracking mode is the normal (default) tablet mode. In absolute mode the screen is directly mapped to the tablet's active area. In this mode, the lower left corner of the tablet's active area corresponds to the lower left corner of the screen, the upper right corner on the tablet corresponds to the upper right corner of the screen, etc. When you place a pointing device on the tablet, the screen cursor would jump to the location on the screen that directly corresponds to the position on the tablet. You'll notice that you don't have to "row" the cursor (e.g., pick up and move over and move again) like you often have to do with a conventional mouse.

On the other hand, in Relative tracking mode you move the screen cursor just like you would with a mouse. In relative mode it's possible to find yourself with the screen cursor at one side of the screen, while your pointing device is at the opposite side of the tablet. In that case, you would have to pick up and move your pointing device just like you would do with a mouse. You can set the Relative Resolution in this area by clicking the bar. The resolution means the number of pixel in an inch. The resolution is higher on the right side than on the left side.

Tablet Information

You can see the width and height of the tablet in this area.

Adjust the Resolution in Absolute Mode

INSTALL

- 2) Then follow the install screens to install the Mouse/Tablet driver for AutoCAD Release 10, 11, 12, or later DCS-based AutoCAD versions.

Readme

Here the WINNT directory means where the subdirectory of WINDOWS NT is installed.

- 1) Files copied to the WINNT\SYSTEM32\DRIVERS subdirectory:
gtabport.sys (driver file)
- 2) Files copied to the WINNT\SYSTEM32 subdirectory:
gtablet.cpl (cpl file for Genius Tablet Control Panel)
- 3) Some files about help and readme are copied to this destination directory
(ie. C:\gtabnt)
- 4) Some files necessary for the tablet uninstallation to the "destination directory\\uninst" (ie. C:\gtabnt\uninst)
uninst.exe (tablet uninstall execute file)

---WINDOWS 95 SETUP MODIFICATIONS---

Here the WIN95 directory means where the subdirectory of WINDOWS 95 is installed.

- 1) Files copied to the WIN95\SYSTEM subdirectory:
vdgtd.vxd (Virtual driver)
gtablet.cpl (cpl file for Genius Tablet Control Panel)
wintab.dll (dll file)
wintab32.dll (dll file)
- 2) Some files about help and readme are copied to the destination directory
(ie. C:\gtab95)
- 3) Some files necessary for the tablet uninstallation are copied to the "destination directory\\uninst" (ie. C:\gtab95\uninst)
uninst.exe (tablet uninstall execute file)

---WINDOWS 3.x SETUP MODIFICATIONS---

Here the WIN31 directory means where the subdirectory of WINDOWS 3.x is installed.

- 1) Files copied to the WIN31\SYSTEM subdirectory:
gtablet.driv (driver file)
gtablet.cpl (cpl file for Genius Tablet Control Panel)
wintab.dll (dll file)
wintab32.dll (dll file)

FEDERAL COMMUNICATIONS COMMISSION

NOTE

This equipment has been tested and found to comply with the limits for a Class B digital device, pursuant to Part 15 of the FCC Rules. These limits are designed to provide reasonable protection. This equipment generates, uses and can radiated radio frequency energy and, if not installed and used in accordance with the instructions, may cause harmful interference to radio communications. However, there is no guarantee that interference will not occur in a particular installation. If this equipment does cause harmful interference to radio or television reception, which can be determined by turning the equipment off and on, the user is encouraged to try to correct the interference by one or more of the following measures:

- Reorient or relocate the receiving antenna.
- Increase the separation between the equipment and receiver.
- Connect the equipment into an outlet on a circuit different from that to which the receiver is connected.
- Consult the dealer or an experienced radio/TV technician for help.

Changes or modifications not expressly approved by the party responsible for compliance could void the user's authority to operate the equipment.