



Genius web : www.geniusnet.com
OEM/ODM : www.kyec.com

KYE SYSTEMS CORP.

492, Sec. 5, Chung Hsin Rd.,
Sanzhong Dist., New Taipei City 24160,
Taiwan
Tel: +886-2-2995-6645
Fax: +886-2-2995-6649
<http://www.geniusnet.com>

KYE International Corp. (USA & Canada)

12675 Colony Street, Chino, CA 91710, USA
Tel: 1-626-226-2677
Fax: 1-626-226-2679
Tech Support: 1-800-358-1115
<http://www.geniushop.com>
<http://www.geniusnetusa.com>

KYE Systems UK Ltd.

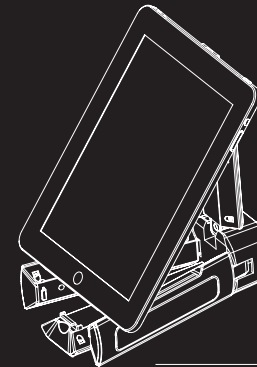
Unit 4, Beddington Lane Industrial Estate,
131 Beddington Lane, Croydon, Surrey,
CRO 4TD, UK
Tel: (44) 208 664 2727 (sales)
(44) 208 664 2710 (Tech, Support)
Fax: (44) 208 664 2721
<http://www.geniusnet.co.uk>

Genius Technology (SHENZHEN) CO., Ltd.

Room 1004, Block A, World Trade Plaza,
Fuhong RD, Futian District,
Shenzhen, China
Tel: 0755-8329-8009
Fax: 0755-8300-8790
<http://www.geniusnet.com.cn>



TRANSBar Unfold into a Wireless Bluetooth Loudspeaker



User Manual

*English/Ryckcuil/Deutsch/Français/
Italiano/Español/Português/Brasil/
Nederlands/Český/Magyar/Polski/
Slovenski/Slovenčina/Hrvatski/
Bosanski/Srpski/Română/Bългарски/
Türkçe/Ukraincosal/Estil/Latviešu/
Lietuviškai/كازاک/عربي*

12031396100-A

www.geniusnet.com

KYE/ MANUAL,TRANSBAR, 12031396100-A / W80xH115mm /80P模造紙 / BK單色印刷 / 騎馬釘 /
共88頁 -封面/空白頁/WBEE x 1頁/ FCC x1頁 / CE x9頁 / Index- 1頁/ i, ii, iii x3頁 /

Federal Communications Commission (FCC) Notice

This device complies with Part 15 of the FCC Rules. Operation is subject to the following two conditions: (1) this device may not cause harmful interference, and (2) this device must accept any interference received, including interference that may cause undesired operation.

This equipment has been tested and found to comply with the limits of a Class B digital device, pursuant to Part 15 of the FCC Rules. These limits are designed to provide reasonable protection against harmful interference in a residential installation.

This equipment generates, uses and can radiate radio frequency energy and, if not installed and used in accordance with the instructions, may cause harmful interference to radio communications. However, there is no guarantee that interference will not occur in particular installations, if this equipment does cause harmful interference to radio or television reception, which can be determined by turning the equipment off and on, the user is encouraged to try to correct the interference by one or more of the following measures:

1. Reorient / Relocate the receiving antenna.
2. Increase the separation between the equipment and receiver.
3. Connect the equipment into an outlet on a circuit different from that the receiver is connected.
4. Consult the dealer or an experienced radio / TV technician for help.

CAUTION

Changes or modifications not expressly approved by the manufacturer responsible for compliance could void the user's authority to operate the equipment.

Disclaimer

The following does not apply to any country where such provisions are inconsistent with local law: KYE Systems Corp. makes no warranties with respect to this documentation, whether expressed or implied. All material is provided "as is". This includes, but is not limited to, any implied warranties of merchantability and fitness for a particular purpose. The information covered in this document is subject to change without notice.

KYE Systems Corp. assumes no responsibility for any errors that may appear in this document.

All brand names mentioned in this manual are trademarks or registered trademarks of their respective companies.

Copyright © 2013 KYE Systems Corp. All rights reserved.

CAUTION: Danger of explosion if battery is incorrectly replaced. Replace only with the same or equivalent type.

WARNING: The battery (battery or batteries or battery pack) shall not be exposed to excessive heat such as sunshine, fire or the like.

1. Read these instructions – All the safety and operating instructions should be read before this product is operated.
2. Keep these instructions – The safety and operating instructions should be retained for future reference.
3. Heed all warnings – All warnings on the appliance and in the operating instructions should be adhered to.
4. Follow all instructions – All operating and use instructions should be followed.
5. Do not use this apparatus near water – The appliance should not be used near water or moisture – for example, in a wet basement or near a swimming pool, and the like.
6. Clean only with dry cloth.
7. Do not block any ventilation openings. Install in accordance with the manufacturer's instructions.
8. Do not install near any heat sources such as radiators, heat registers, stoves, or other apparatus (including amplifiers) that produce heat.
9. Only use attachments/accessories specified by the manufacturer.
10. Use only with the cart, stand, tripod, bracket, or table specified by the manufacturer, or sold with the apparatus. When a cart or rack is used, use caution when moving the cart/apparatus combination to avoid injury from tip-over.
11. Unplug the apparatus during lightning storms or when unused for long periods of time.
12. Refer all servicing to qualified personnel. Servicing is required when the apparatus has been damaged in any way, such as power supply cord or plug is damaged, liquid has been spilled or objects have fallen into the apparatus has been exposed to rain or moisture, does not operate normally, or has been dropped.



Correct Disposal of this product. This marking indicates that this product should not be disposed with other household wastes throughout the EU. To prevent possible harm to the environment or human health from uncontrolled waste disposal, recycle it responsibly to promote the sustainable reuse of material resources. To return your used device, please use the return and collection systems or contact the retailer where the product was purchased. They can take this product for environmental safe recycling.



Symbol for Separate Collection in European Countries

This symbol indicates that this product is to be collected separately. The following apply only to users in European countries:

- This product is designated for separate collection at an appropriate collection point. Do not dispose of this household waste.
 - For more information, contact the retailer or the local authorities in charge of waste management.
- Dieses Symbol bedeutet, dass dieses Produkt separat ansortiert werden muss. Folgendes gilt nur für Benutzer in der Europäischen Union:
- Dieses Produkt ist einem geeigneten Sammelplatz angeliefert worden.
 - Entsorgen Sie das Produkt nicht im Hausabfall.
 - Weitere Informationen erhalten Sie von Ihrem Einzelhändler oder von der für Entsorgung zuständigen örtlichen Behörde.

Simbolo de recogida selectiva en países europeos

Este símbolo indica que este producto debe eliminarse por separado. Las cláusulas siguientes se aplican únicamente a los usuarios de países europeos:

- Este producto debe recogerse separadamente en un punto de recogida adecuado. No elimine este producto con la basura normal.
- Para más información, póngase en contacto con el vendedor o la autoridad local encargada de la gestión de residuos.

Simbolo para a recolta separada em países da Europa

Este símbolo indica que este produto tem de ser recolhido separadamente, em seguintes pontos aplicam-se somente a utilizadores de países europeus:

- Este produto está designado para a recolha separada num ponto de recolha apropriado. Não elimine este produto como lixo doméstico.
- Para mais informações contacte o vendedor ou as autoridades locais responsáveis pela gestão de lixo.

Symbol voor gescheiden afvalophaling in Europese landen

De symbol geeft aan dat dit product afzonderlijk moet worden opgehaald. Het volgende geldt alleen voor inwoners van Europese landen:

- Dit product wordt ontworpen voor gescheiden inzameling op een geschikt inzamelingspunt. Het hoort niet bij het huishoudelijk afval.
- Neem voor meer informatie contact op met de verkoper of de plaatselijke overheid, behalve met het afvalbeheer.

Symbol pro třídění odpadu v evropských zemích

Tento symbol označuje, že tento výrobek je třeba třídit odděleně jako tříděný odpad. Pro uživatele v evropských zemích platí následující zásady:

- Tento výrobek je třeba třídit odděleně jako tříděný odpad v příslušné sběrně. Nelikví se běžným komunálním odpadem.
- Další informace vám poskytne prodejce nebo místní úřady zodpovědné za řízení odpadu.

Símbole eraldi kogumiseks Euroopa maades

See symbol näitab, et seda toodet tuleb koguda eraldi. Alljärgnev kehtib ainult kasutajatele Euroopa maades:

- Seda toodet tuleb koguda eraldi vastavasse kogumispunkti. Ärge likvideerige seda kui ühinejäät.
- Kui teil on vaja enam teavet, võite otsustada jämistaja või kohaliku autoriteediga, kes on vastutav jäätmekorralduse teostamise eest.

Atseviškas atkritumu savākšanas simbols Eiropas valstīs

Šis simbols norāda, ka izstrādājums ir jānosūta no citiem atkritumiem. Šie norādījumi attiecas tikai uz iedzīvotājiem Eiropas valstīs:

- Izstrādājums paredzēts savākt atsevišķi no citiem atkritumiem tam piemērotā savākšanas vietā. To nedrīkst iemest kopā ar sadzīves atkritumiem.
- Lai iegūtu papildu informāciju, sazinieties ar mazumtirgotāju vai vietējām iestādēm, kas atbild par atkritumu apsaimniekošanu.

Aynı biriktirime için Avrupa ülkelerinin sembolleri

Bu sembol bu ürünlerin aynı toplama alanı gerektirilen çöplükten ayrıştırılmalıdır. Aşağıdaki bilgiler sadece Avrupa Ülkelerindeki kullanıcılara için geçerlidir:

- Bu ürün aynı bir noktada toplanmamak üzere dizayn edilmiştir.
- Ev çöplü atarak atmayın.
- Daha fazla bilgi için satışçıya veya bölgenizdeki çöp toplama otoritesine başvurun.

Simbols atskiram atlieku iŝmetimui jvairoŝos Eiropos valstīs

Šis simbols norāda, ka šis produkts turi būt iŝmetams atsevišķi. Sekantā informācija attiecas tikai Eiropas valstīs iedzīvotājiem:

- Šis produkts ir izstrādāts atskiram iŝmetimui tam ierīcītiem atlieku savākuma telpā. Nedrīkst to iemest kopā ar sadzīves atlieku.
- Daļā tālruna informācija, sazināties ar mazumtirgotāja arba vietējos valdības orgānus atbilstoši uz atlieku tvarkīšana.

Simbolo de recogida selectiva en países europeos

Este símbolo indica que este producto debe eliminarse por separado. Las cláusulas siguientes se aplican únicamente a los usuarios de países europeos:

- Este producto debe recogerse separadamente en un punto de recogida adecuado. No elimine este producto con la basura normal.
- Para más información, póngase en contacto con el vendedor o la autoridad local encargada de la gestión de residuos.

Simbolo para a recolta separada em países da Europa

Este símbolo indica que este produto tem de ser recolhido separadamente, em seguintes pontos aplicam-se somente a utilizadores de países europeus:

- Este produto está designado para a recolha separada num ponto de recolha apropriado. Não elimine este produto como lixo doméstico.
- Para mais informações contacte o vendedor ou as autoridades locais responsáveis pela gestão de lixo.

Symbol voor gescheiden afvalophaling in Europese landen

De symbol geeft aan dat dit product afzonderlijk moet worden opgehaald. Het volgende geldt alleen voor inwoners van Europese landen:

- Dit product wordt ontworpen voor gescheiden inzameling op een geschikt inzamelingspunt. Het hoort niet bij het huishoudelijk afval.
- Neem voor meer informatie contact op met de verkoper of de plaatselijke overheid, behalve met het afvalbeheer.

Symbol pro třídění odpadu v evropských zemích

Tento symbol označuje, že tento výrobek je třeba třídit odděleně jako tříděný odpad. Pro uživatele v evropských zemích platí následující zásady:

- Tento výrobek je třeba třídit odděleně jako tříděný odpad v příslušné sběrně. Nelikví se běžným komunálním odpadem.
- Další informace vám poskytne prodejce nebo místní úřady zodpovědné za řízení odpadu.

Símbole eraldi kogumiseks Euroopa maades

See symbol näitab, et seda toodet tuleb koguda eraldi. Alljärgnev kehtib ainult kasutajatele Euroopa maades:

- Seda toodet tuleb koguda eraldi vastavasse kogumispunkti. Ärge likvideerige seda kui ühinejäät.
- Kui teil on vaja enam teavet, võite otsustada jämistaja või kohaliku autoriteediga, kes on vastutav jäätmekorralduse teostamise eest.

Atseviškas atkritumu savākšanas simbols Eiropas valstīs

Šis simbols norāda, ka izstrādājums ir jānosūta no citiem atkritumiem. Šie norādījumi attiecas tikai uz iedzīvotājiem Eiropas valstīs:

- Izstrādājums paredzēts savākt atsevišķi no citiem atkritumiem tam piemērotā savākšanas vietā. To nedrīkst iemest kopā ar sadzīves atkritumiem.
- Lai iegūtu papildu informāciju, sazināties ar mazumtirgotāju vai vietējām iestādēm, kas atbild par atkritumu apsaimniekošanu.

Aynı biriktirime için Avrupa ülkelerinin sembolleri

Bu sembol bu ürünlerin aynı toplama alanı gerektirilen çöplükten ayrıştırılmalıdır. Aşağıdaki bilgiler sadece Avrupa Ülkelerindeki kullanıcılara için geçerlidir:

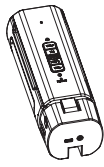
- Bu ürün aynı bir noktada toplanmamak üzere dizayn edilmiştir.
- Ev çöplü atarak atmayın.
- Daha fazla bilgi için satışçıya veya bölgenizdeki çöp toplama otoritesine başvurun.

Simbols atskiram atlieku iŝmetimui jvairoŝos Eiropos valstīs

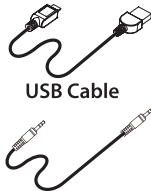
Šis simbols norāda, ka šis produkts turi būt iŝmetams atsevišķi. Sekantā informācija attiecas tikai Eiropas valstīs iedzīvotājiem:

- Šis produkts ir izstrādāts atskiram iŝmetimui tam ierīcītiem atlieku savākuma telpā. Nedrīkst to iemest kopā ar sadzīves atlieku.
- Daļā tālruna informācija, sazināties ar mazumtirgotāja arba vietējos valdības orgānus atbilstoši uz atlieku tvarkīšana.

Contents



TRANSBAR



USB Cable

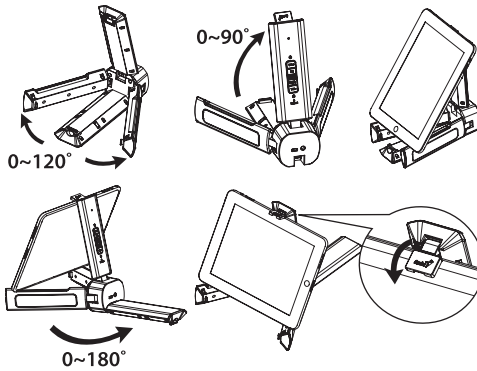


3.5mm Audio Cable



Pouch

Setup



**Unfold to function as a stable and secure frame
for your iPad, tablet PC or smart pad**

Figure 1

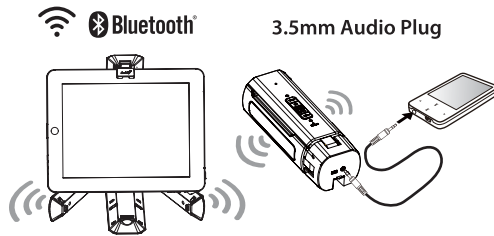
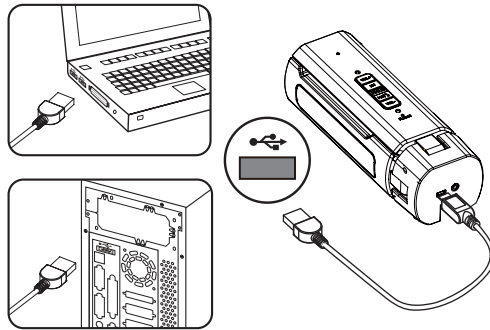


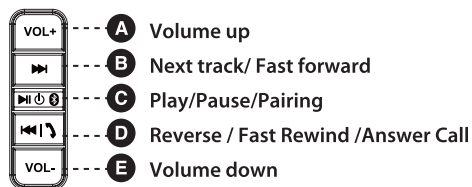
Figure 2



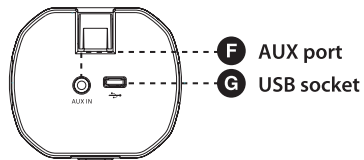
Function

 ----- Built-in MIC for voice conversation

 ----- **1** Status indicator



 ----- **2** Power indicator



Compatible with all line in audio source:
iPad/iPod/Smartphone/Tablet PC/MP3 Player/CD player/Notebook...,etc..