

RF Wheel Mouse and Keyboard

User's Guide



HEALTH WARNING!

Some research suggests that long periods of repetitive motion using an improperly setup workspace, incorrect body position, and poor work habits may be associated with physical discomfort and injury to nerves, tendons, and muscles.

However, if you experience symptoms such as persistent or recurring discomfort, pain, throbbing, aching, tingling, numbness, burning sensation, or stiffness, **DO NOT IGNORE THESE WARNING SIGNS. PROMPTLY SEE A QUALIFIED HEALTH PROFESSIONAL**, even if symptoms occur when you are not working at your computer. Symptoms such as these can be associated with painful and sometimes permanently disabling injuries or disorders of the nerves, muscles, tendons, or other parts of the body. ♦ These musculoskeletal disorders (MSDs) include carpal tunnel syndrome, tendonitis, tenosynovitis, and other conditions.

TO REDUCE THE RISK OF INJURY, FOLLOW THESE PRECAUTIONS:

- Take frequent short breaks. Get up and walk around several times every hour.
- Vary your tasks throughout the day. Do something different with your hands and arms from time to time.
- Use a light touch on the keyboard and for better control of the mouse or trackball.
- Keep your shoulders relaxed with your elbows at your side. Position your keyboard and mouse so you do not have to reach to use them.
- Adjust your chair and keyboard so your upper arms and wrists are straight.
- Avoid resting your wrists on sharp edges.
- Use the software features of your keyboard, mouse, or trackball to help reduce stress to your arms, wrists, or hands by minimizing repetitive or awkward motions.

Acknowledgement

Thanks for your purchasing this RF keyboard and mouse, the most natural and easy-to-use input device. This RF keyboard and mouse provide you comfortable experience with ergonomic and convenience design. Using the latest radio frequency technology, the RF keyboard and mouse let you work without wires and feel free more than you have.

About this Users' Guide

The Users' Guide introduces the step-by-step process for installing your RF keyboard and mouse. It can be divided into six chapters: General Description, Hardware Installation, Software Installation, Buttons Settings, Troubleshooting and Maintenance.

The Users' Guide is believed to be correct and accurate in all respects. The information contained in this document is subject to change without notice. Periodic changes may be made in this document without any obligation to notify any person of such changes. No responsibility is assumed for any errors or omissions in this document.

The symbols showed as the following will be used regularly in the Users' Guide. Please pay attention to these descriptions and finish them patiently.



Note: indicates that mis-installation might be done or something you should pay attention to.



Warning: indicates that ignoring the warning may cause the permanent damage to the product or injure to the person.

Copyright© 2001 by KYE SYSTEMS CORP. All rights reserved. No part of this manual may be reproduced, stored in a retrieval system, or transmitted, in any form or by any means, electronic, mechanical, or otherwise, without the prior written permission of KYE SYSTEMS CORP.

Windows XP, Windows ME and Windows 2000 are registered trademark of Microsoft Corporation.

Other products and company names mentioned herein may be the trademarks of their respective owners.

Table of Content

ABOUT THIS USERS' GUIDE	3
1. GENERAL DESCRIPTION	5
1.1 INTRODUCTION	5
1.2 UNPACKING AND INSPECTION	5
1.3 SYSTEM REQUIREMENTS	6
1.4 ENVIRONMENT REQUIREMENTS.....	6
2. HARDWARE INSTALLATION	7
2.1 INSTALLING THE BATTERIES.....	7
2.2 SETTING UP THE ID CHANNEL	8
2.3 CONNECTING THE RF RECEIVER TO YOUR COMPUTER.....	9
2.4 SETTING UP YOUR RF DESKTOP	10
3. SOFTWARE INSTALLATION.....	11
4. SETTING UP THE RF KEYBOARD AND MOUSE	14
4.1 FACTORY SETTING	14
MOUSE	14
KEYBOARD	15
4.2 BUTTON CONTROL PANEL.....	16
MOUSE	16
4.3 SETTING UP RF MOUSE OPTIONS FOR INTERNET	17
4.4 SOME AVAILABLE FEATURES FOR MOUSE	18
4.5 SETTING UP HOTKEY OPTIONS FOR KEYBOARD	19
5. TROUBLESHOOTING	27
WHEN THE RF KEYBOARD AND MOUSE DO NOT WORK UPON INSTALLATION.....	27
WHEN THE CURSOR DOES NOT MOVE PROPERLY OR THE KEYBOARD DOES NOT WORK...	27
WHEN ACPI POWER MANAGEMENT KEYS CANNOT WORK PROPERLY.....	27
6. MAINTENANCE.....	28

1. General Description

1.1 Introduction

With the latest radio frequency technology, the RF keyboard and mouse provide you a comfortable and carefree operation condition. The RF mouse has 3 buttons on it. These buttons can be programmed respectively to control some movements that you may frequently use in Windows[®]; for example, double clicks, zoom in and out, shift key, scroll, copy, paste, enter, page up and down, etc. The RF keyboard is equipped with 16 extra multimedia buttons for use in Windows[®]. You can surf the Internet or e-mail your friends with one touch. In addition, you can also use these buttons to control the CD player including the adjustment of the volume. The software of the CD player is fully supported by the attached CD-ROM driver.

1.2 Unpacking and Inspection

Before installing your RF keyboard and mouse, carefully inspect packages for evidence of external damage or an indication of possible damage to the contents. Then check each package against the following list. Report damage or missing items immediately to your agent.

Content List	
<input type="checkbox"/> RF Receiver	x 1
<input type="checkbox"/> Wireless Keyboard with Palm-rest.....	x 1
<input type="checkbox"/> Wireless Mouse.....	x 1
<input type="checkbox"/> AA Batteries	x 2
<input type="checkbox"/> AAA Batteries	x 2
<input type="checkbox"/> CD-ROM Drivers for Windows [®] /95/98/Me/NT4.0/2000/XP ...	x 1
<input type="checkbox"/> Quick Installation Guide.....	x 1

* Mark the square container to make sure that you get the complete product.

1.3 System Requirements

To install and use the RF keyboard and mouse, your system must have the following:

- . IBM[™]-Compatible PC, with 80486 processor or faster.
- . 8 MB RAM minimum. (16 MB recommended)
- . 10 MB hard-disk space.
- . CD-ROM Drive.
- . PS/2 keyboard port. (If your system is AT keyboard port, you must buy one more AT socket to PS/2 socket converted adapter)
- . PS/2 mouse port.
- . Microsoft Windows[®] 95/98/Me or Windows[®] NT 4.0 (with Service Pack 3 or later version) or Windows[®] 2000 preinstalled.
- . Microsoft Windows[®] Media Player 6.4 and CD Player preinstalled or Windows[®] Media Player 7.0 preinstalled.

1.4 Environment Requirements

In order to keep your RF keyboard and mouse in the perfect performance and avoid the unnecessary damages, please read the following cautions:



Note!

- . Do not use the device in a damp environment, such as a bathroom, a damp basement, a swimming pool, etc.
- . Do not try to repair the device by yourself
- . Under the following circumstances, have the device repaired by qualified personnel.
 - a) The cable or plug is damaged or worn.
 - b) Liquid has entered the device.
 - c) The device has fallen and /or the casing has been damaged.
 - d) The performance of the device is clearly becoming worse.
- . Position the device so that the cable cannot be damaged.
- . If the device must be cleaned, use a damp cloth. Do not use a liquid cleaner or a spray.

2. Hardware Installation



Warning

Before installing or removing the keyboard or mouse (either the original or the RF one) to or from your computer, always remember to turn off your computer. Installing or removing the keyboard or mouse when your computer is running will cause permanent damage to them or your computer.

2.1 Installing the Batteries

The RF keyboard uses 2 AA alkaline batteries and the RF mouse uses 2 AAA alkaline batteries. For the best performance, please use only alkaline batteries provided with or identified in accordance with the instructions and limitations specified above.



Warning

- *Do not dispose of the battery in a fire. The cell may explode. Check with local codes for possible special disposal instructions.*
- *Do not open or mutilate the battery. Released electrolyte is corrosive and may cause damage to the eyes or skin. It may be toxic if swallowed.*
- *Exercise care in handling the batteries in order not to short the battery with conducting materials such as rings, bracelets and keys. The battery may overheat and cause burns.*
- *Keep the battery out of the reach of small children.*
- *Do not mix old and new batteries in this product (applies to products employing more than one user replaceable secondary battery).*
- *Do not mix batteries of different sizes or from different manufacturers in this product (applies to products employing more than one user replaceable secondary battery).*

Keyboard:

1. *Remove the battery compartment covers on the bottom of the RF keyboard. See Figure 1.*
2. *Insert 2 AA batteries into each battery compartment. Pay attention to the polarity. A diagram in the battery compartment shows the correct battery installation.*
3. *Replace the covers to the RF keyboard.*

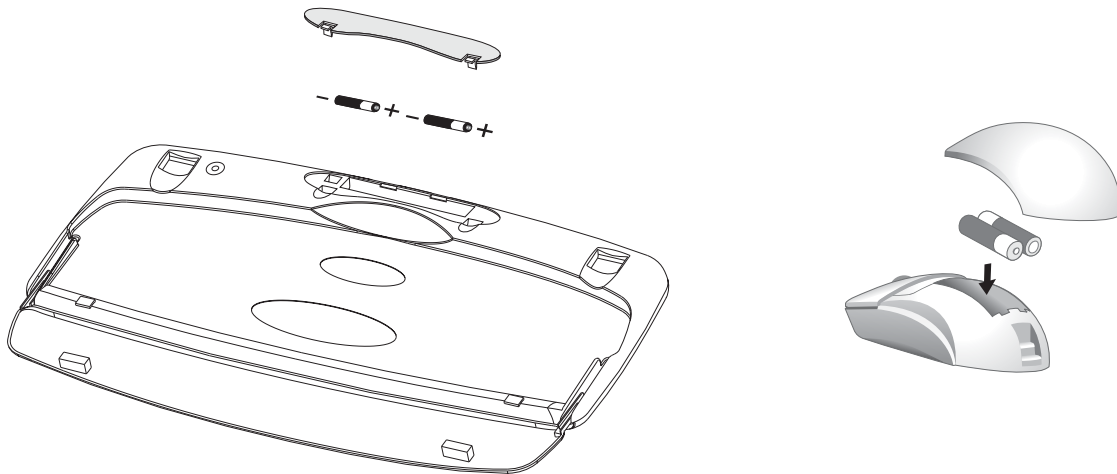


Figure1: Installing the Batteries

Mouse:

1. . Press the tab on the bottom of the RF mouse. See Figure1.
2. . Press the latch then slide the cover off the RF mouse.
3. . Insert 2 AAA batteries into the battery compartment. Pay attention to the polarity. A diagram in the battery compartment shows the correct battery installation.
4. . Replace the covers to the RF mouse until a click is heard.



Note!

Incorrect insert the batteries will disable the RF keyboard and mouse!

2.2 Setting up the ID channel

There is a channel button on the bottom of the RF receiver, RF keyboard and mouse. Before using them, you have to set the ID channel first. See Figure 2.

- Step 1. Press and release the `channel button` on the bottom of the RF Receiver.
- Step 2. Then press and release the `channel button` on the bottom of the RF Mouse.
- Step 3. Repeat Step 1 and Step 2 to setting up your RF Keyboard.



Note!

- a. The connect (RED) light flashes on the RF Receiver if the mouse is connected ready.
- b. You must set the channel on both devices within 8 seconds of when you start Step 1.
- c. You need re-setting up the ID channel after you change the batteries.

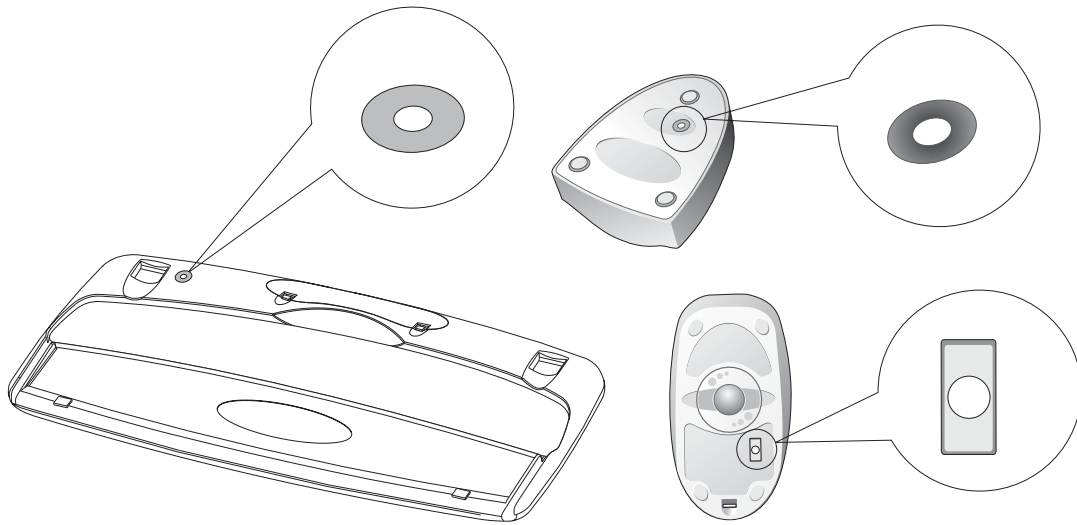


Figure2: The channel buttons

2.3 Connecting the RF Receiver to Your Computer

The connectors of the RF receiver meet the PC 99 Spec. If you have a computer with PC 99 Spec, simply plug the connectors to the corresponding PS/2 ports. For your convenience, each connector has a small icon on it. The color of the mouse port is green, and the keyboard port is purple. Also refer to your main board manual for the location of PS/2 ports. See Figure 3.

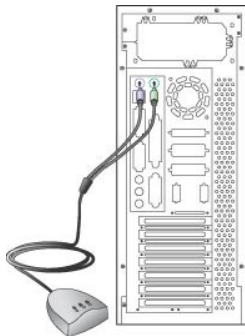


Figure 3: The Location of keyboard and mouse ports

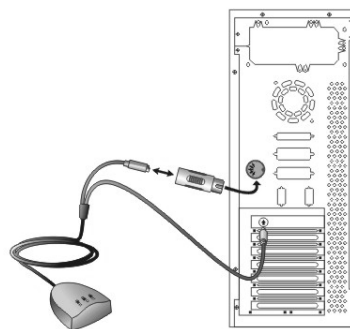


Figure 4: Optional Adapter

If your computer is AT spec, please contact your agent for the optional adapter. See Figure 4.

2.4 Setting up Your RF Desktop

The RF keyboard comes with a foldable palm-rest to reduce the injury suffering from the chronic working with the keyboard. Follow Figure 5 to install the palm-rest.

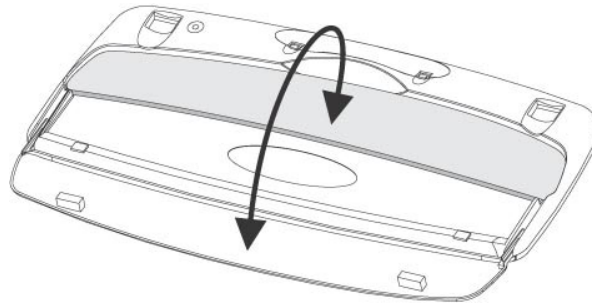


Figure 5: Installing the Palm-rest to the Keyboard

The RF keyboard and mouse gives you free movement and an enjoyable experience. For optimal performance, place the RF receiver at least 8 inches (about 20cm) away from the RF keyboard, mouse and other electrical devices, such as computer, monitor, etc. See Figure 6.

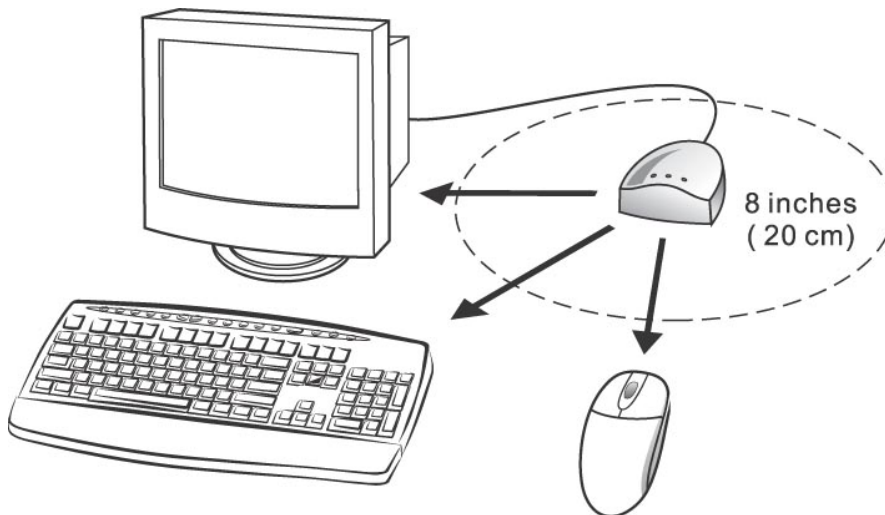


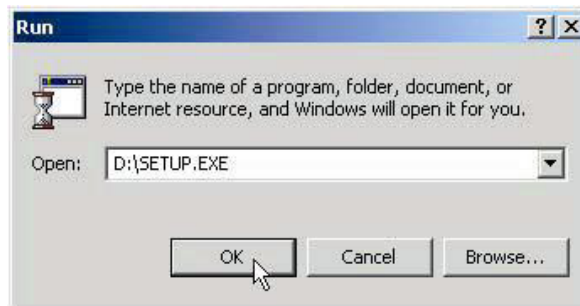
Figure 6: The Proper Distance between Your Devices

3. Software Installation

1. Turn on your computer and start the Windows^Æ.
2. Insert the CD driver into your CD-ROM drive.
3. If your computer is AutoPlay compatible, wait for the setup screen to display, then go to step 5.



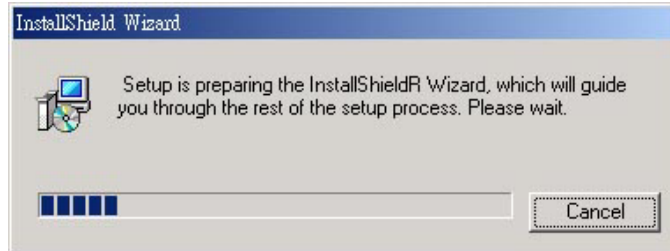
4. Go to the Windows^Æ taskbar and click Start, then Run. Type D:\SETUP.EXE and click OK, where 豎:□ is the drive designation of your CD-ROM drive.



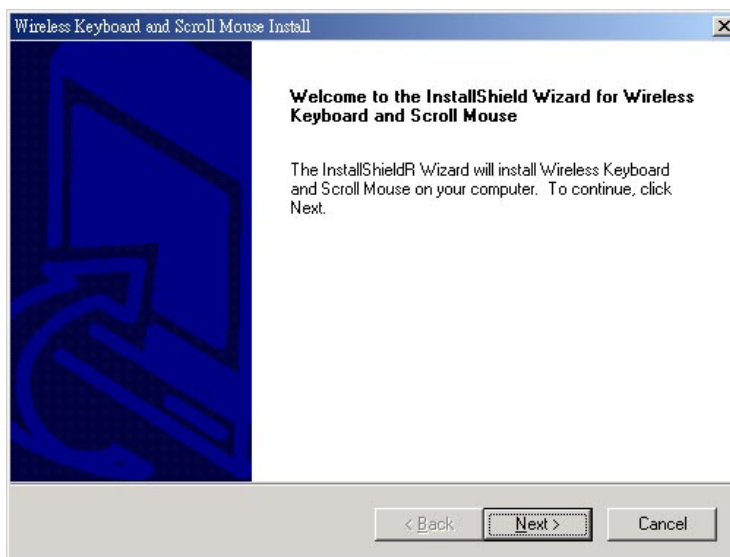
5. Select a proper language for your Windows^Æ.



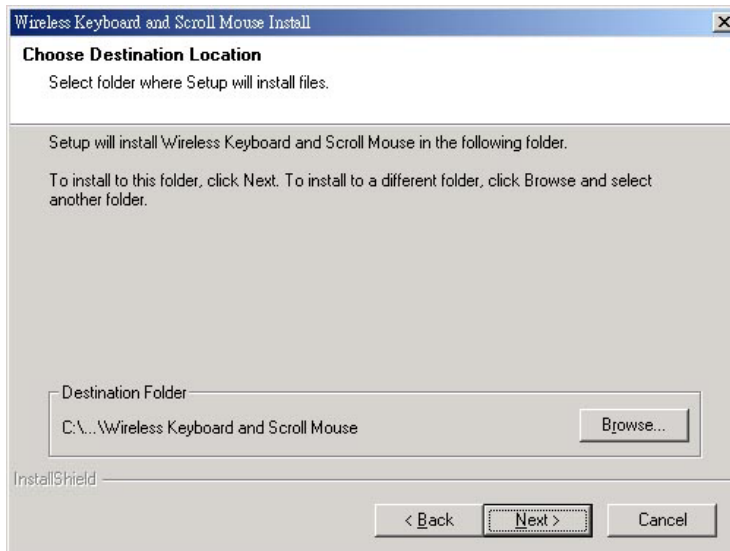
6. Click OK to start the install shield wizard.
7. Wait for the install shield wizard to copy the necessary files to your system.



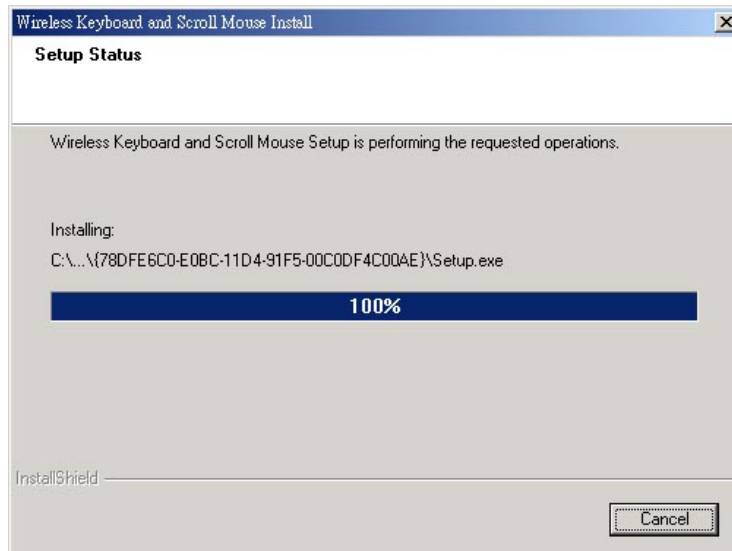
8. Click Next to continue.



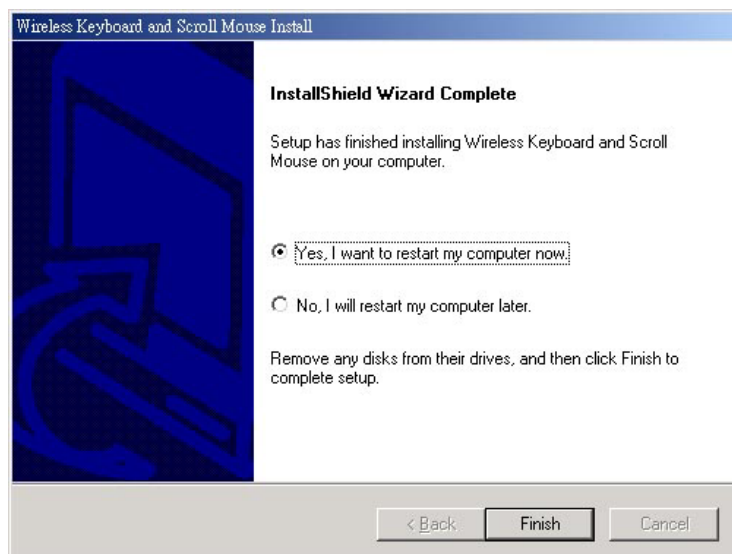
9. Click Next to continue. (Or click Browse to change the path, and then click OK)



10. Wait for the install shield wizard to finish the installation.



11. Restart your computer.



4. Setting up the RF Keyboard and Mouse

This chapter will introduce the factory setting of the buttons on your RF keyboard and mouse. Otherwise, you will also learn to change these settings to meet your comfort.

4.1 Factory Setting

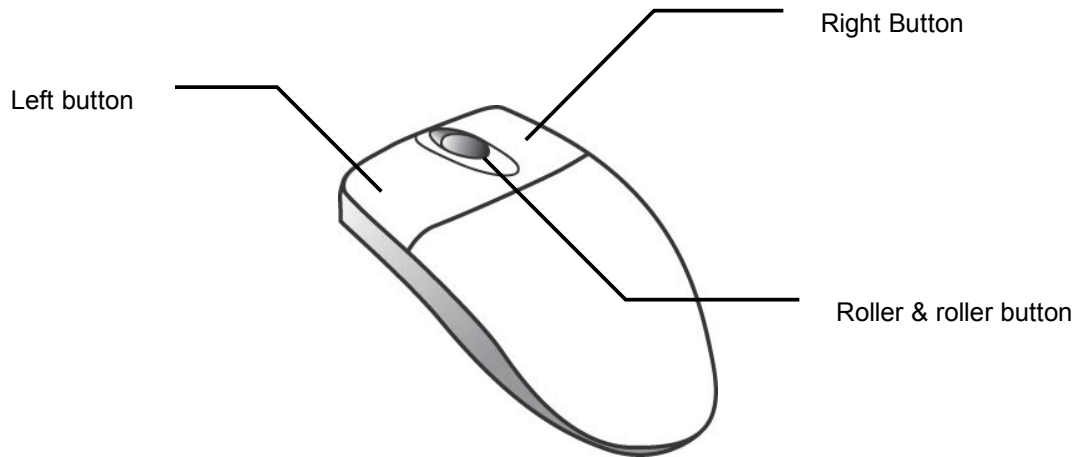


Figure 7: The Factory Setting of the RF Mouse

Mouse

- Roller** : You can use the Roller to scroll up or down when surfing the Internet or searching in a large document.
- Roller Button** : You can assign this button to features such as EasyJump, Auto-Panning, Zoom, etc. that are frequently used by keyboard.
- Left Button** : Provides traditional mouse functions such as click, double click and drag.
- Right Button** : You can assign this button to features such as EasyJump, Auto-Panning, Zoom, etc. that are frequently used by keyboard.

Keyboard

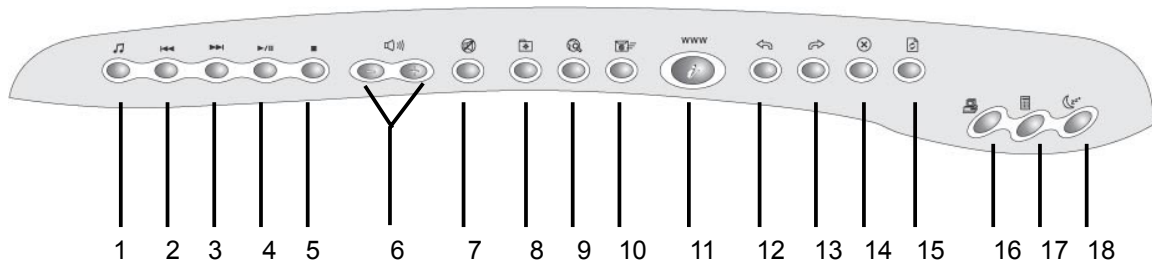


Figure 8: The Multimedia Buttons on the RF Keyboard

Media Keys:

- Media** : Start the media player that you select.
- Rewind** : Previous track of audio or video CD.
- Forward** : Next track of audio or video CD.
- Play & Pause** : Play and pause of audio or video CD.
- Stop** : Stop play of audio or video CD.
- Vol +&-** : Decrease or increase volume.
- Mute** : Mute.


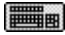
Internet Keys:

- My Favorites** : Display your Favorites or Bookmarks list.
- Search** : Go to your Internet search service.
- E-mai** l: Access the E-mail application.
- WWW** : Access the Internet Browser application.
- Back** : Back to the previous web page.
- Forward** : Forward to the next web page.
- Stop** : Stop loading or refreshing a new page.
- Refresh** : Update the content on a page.

Others:

- My Computer** : Display iMy Computer.
- Calculator** : Access the Calculator in Windows/Æ
- Sleep** : Turn system into sleep mode.

4.2 Button Control Panel

The software enables you to set the RF mouse / keyboard buttons to meet your convenience and comfort. You can change the pointer type, mouse speed, cursor size, pointing direction, etc. Double-click the RF mouse icon  or keyboard icon  at the lower right of the screen to open the button control panel.

Mouse



The version of the driver

There are 8 sections in the button control panel. You can click the tab to enter the advanced settings.

Set the movement of pointer

Set the buttons of the mouse

Set Magic-Roller

Suggestion to users

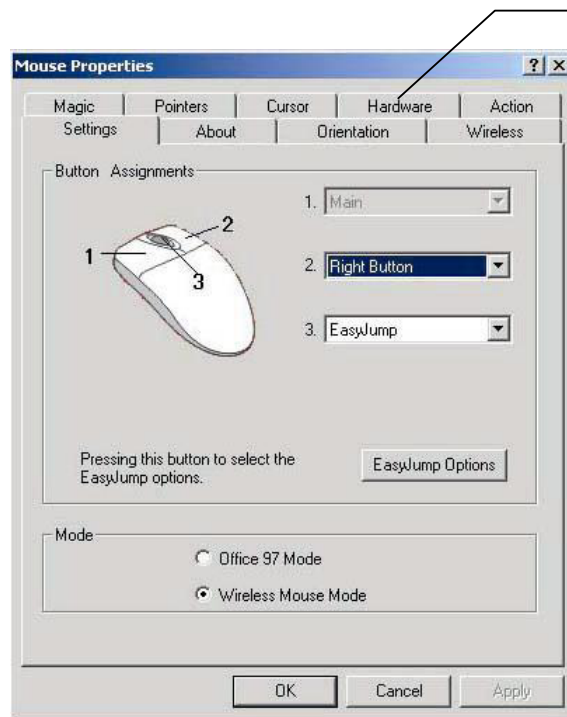
Change the shape of the pointer

Sets mouse orientation

Set the function of pointer

The version of the driver

* The Button Control Panel under Windows® Me



Troubleshooting and advanced hardware settings

** The Button Control Panel under Windows® 2000/XP*

4.3 Setting up RF mouse Options for Internet

Open the button control panel and click Settings tab. Then click EasyJump Options to display the functions such as Open Browser, Add to Favorites (IE), Organize Favorites (IE), Add Bookmark (Netscape), Edit Bookmark (Netscape), Go next (Forward) and Go Previous (Back).

Auto-Panning

Open the button control panel

Open the Help file

The default setting is Internet Access (can be set as list)

Close application









Move to horizontal scroll

Move to vertical scroll

Access the Windows/Start

4.4 Some Available Features for mouse

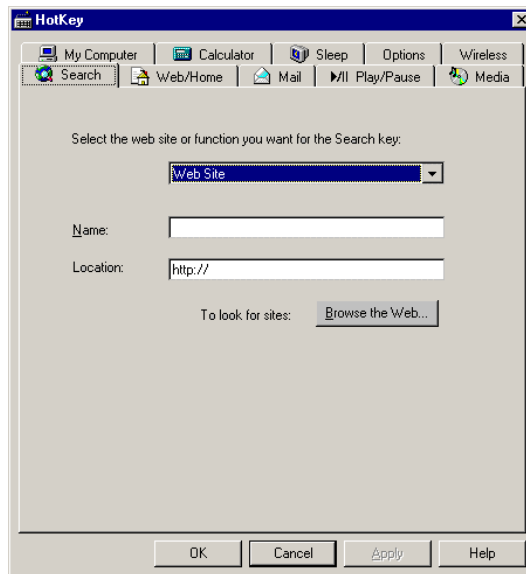
There are some available features for mouse that you may use when setting your RF mouse.

	Browsing Speed	You can adjust the browsing speed when you surf the Internet or Windows documents.
	Browsing Direction	Move the iMagic-Roller forward and the screen will browse to the top of the document. Move it in reverse and the document will go in the opposite direction.
	Button Find	Automatically positions the cursor on the default button, usually the OK button, when the dialog box appears on your screen.
	Trails	This option makes it easier to find the cursor when using an LCD monitor. This option cannot be used if your monitor does not support it.
	Loop	When you move the cursor to the top/bottom of the screen, it will automatically move the cursor to the bottom/top of the screen.
	Mouse Speed	This function lets you adjust the speed at which the pointer moves across the screen.
	Double Click Speed	Use this function to set the double click speed of the mouse.
	Swap Left/Right	Select this option if you want to have RF mouse operate with the right mouse button as the primary button.

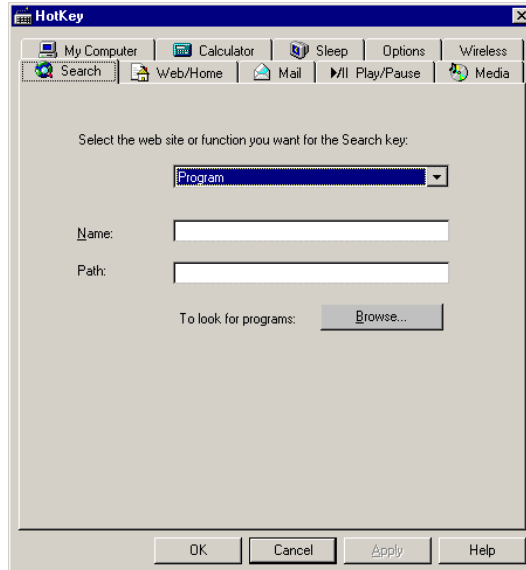
4.5 Setting up Hotkey Options for keyboard

There are many options can setting to three functions: *Web Site, Program and Menu*

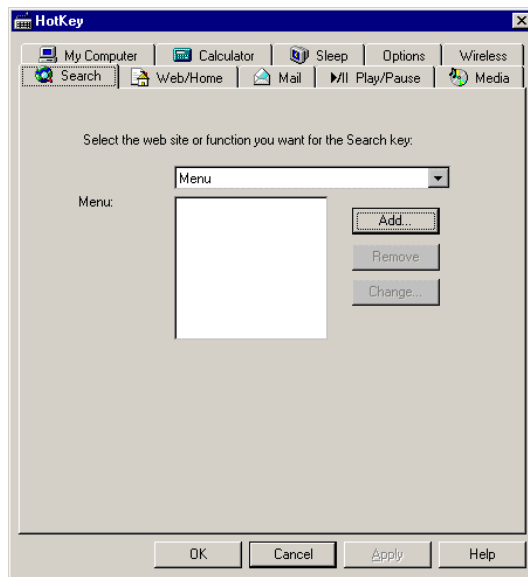
Web Site:



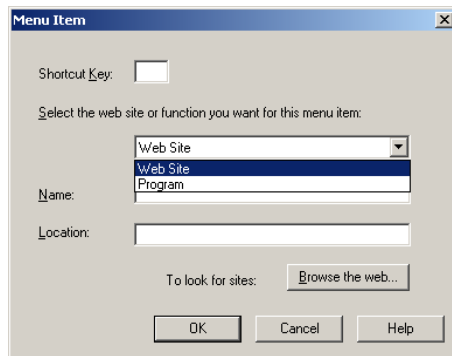
Program:



Menu:



Press 'Add' button to add menu item.



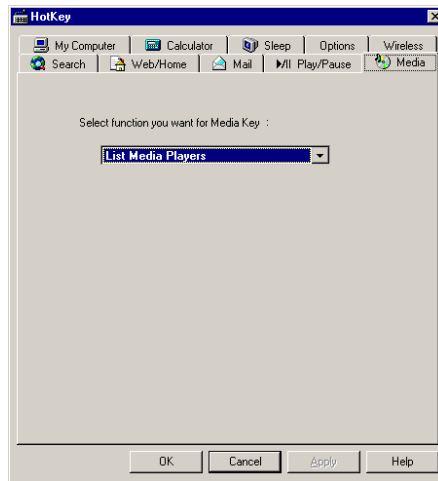
Media Key

You can assign Media key as:

List supported Media Players on computer. Press Media key, the below popup menu will appear. Select a player from the list using the tab key, arrow keys, or mouse, and then press Enter.



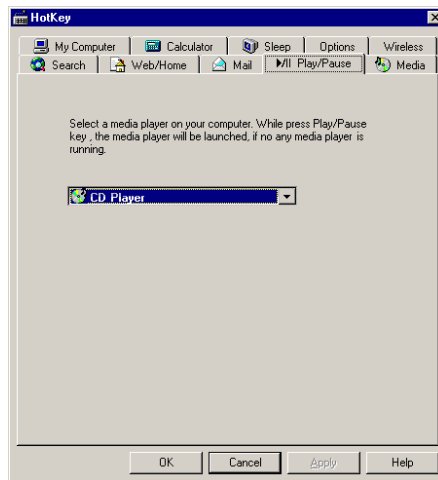
Eject /Insert CD: Once ejected, press again to insert CD.



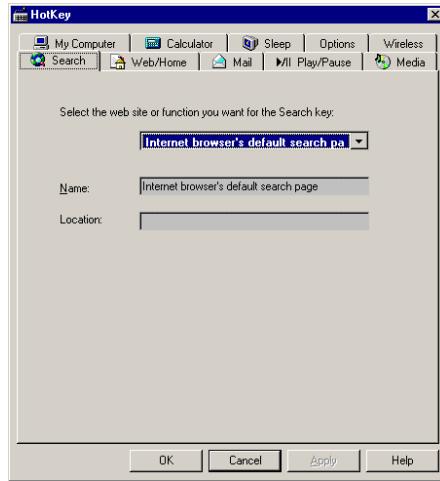
Play/Pause Key

If no any media player is running, you can launch a media player that select from the combo list. The combo list will list:

None, Default Audio CD player and Supported media players on computer.



Search Key: You can assign Search key as Internet browser's default search page

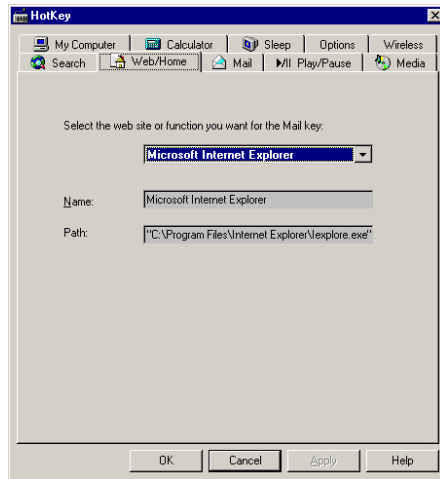


Web/Home Key

You can assign mail key from combo box as:

Supported Internet Browser program.

Web Site, Program, Menu

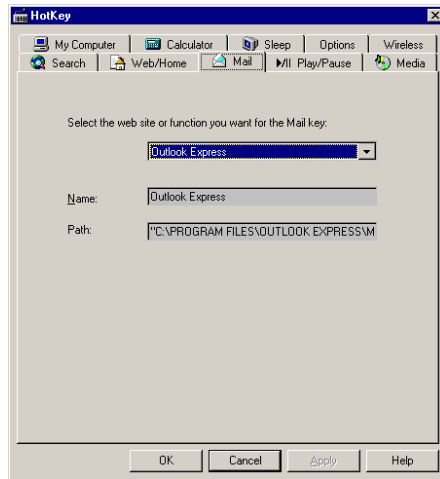


Mail Key

You can assign mail key from combo box as:

Supported Email program like, Microsoft Outlook, Microsoft Outlook Express, Netscape, etc.

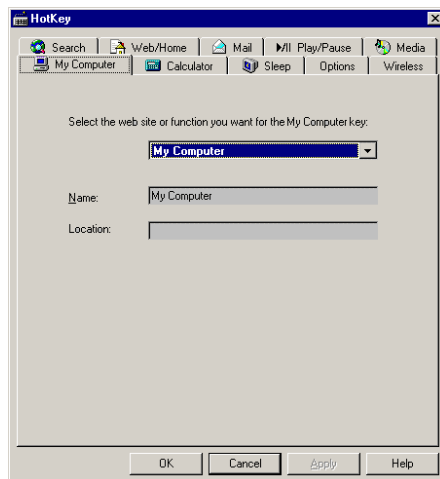
MSN Hotmail, *Web Site, Program, Menu*



My Computer Key

You can assign My Computer key as:

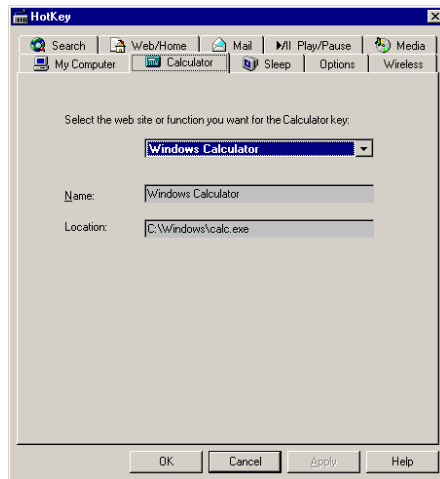
My Computer, Windows Explorer, *Web Site, Program, Menu*



Calculator Key

You can assign Calculator key as:

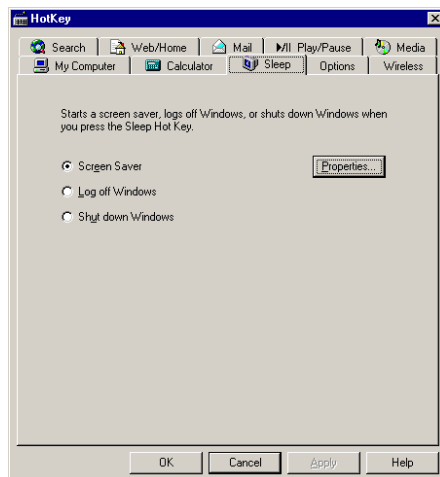
Windows Calculator, *Web Site, Program, Menu*



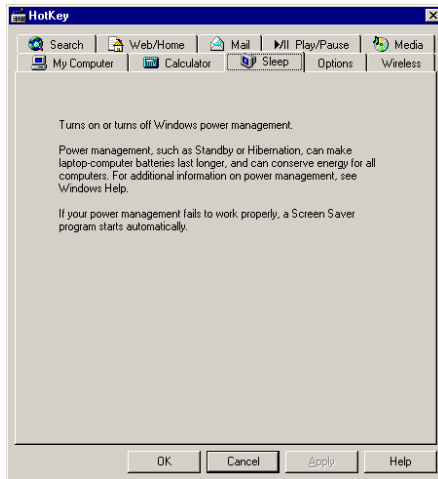
Sleep Key

On computers running Windows 95 or Windows NT version 4.x without a power management program, the Sleep Hot Key can assign one of the following functions from Hot Key user interface.

Start a screen saver, Log off Windows, Shut down Windows



On computers with power-management functionality such as Sleep, Suspend, or Hibernation the Sleep feature automatically assigns the power-management functionality to the Sleep HotKey.



Options

Enable show icon in the task bar, the HotKey icon will appear like below.

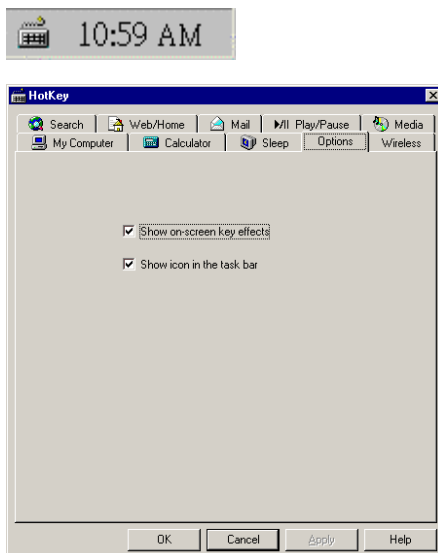
Click the HotKey icon, and then show Hot Keys setting.

Double-Click HotKey icon, then show HotKey configuration user interface.

Right click HotKey icon, then show the following menu items in a menu.

HotKey configuration

Hide Icon, Help, About, Exit



Wireless

Provide Battery status.

Provide Caps Lock, Num Lock, Scroll Lock status and show in the task bar. Like below.

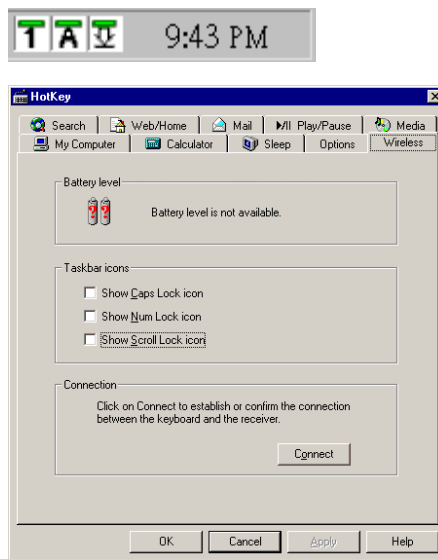
Click one of icon, and then show Caps Lock, Num Lock, Scroll Lock led status in a window.

Double click the icon, then show HotKey configuration user interface.

Right click the icon, then show the following menu items in a men.

HotKey Configuration

Hide Icon



5. Troubleshooting

When the RF keyboard and mouse do not work upon installation...

- The batteries do not install to your RF keyboard and mouse or have been installed incorrectly. **Refer to 2.1 Installing the Batteries.**
- The RF receiver has been connected to your computer incorrectly. **The green connector goes to the mouse port, the purple to the keyboard port. Refer to 2.3 Connecting the RF Receiver to Your Computer.**
- The ID channel setting of the RF receiver, keyboard and mouse are not identical. **Refer to 2.2 Setting up the ID Channel.**

When the cursor does not move properly or the keyboard does not work...

- The RF receiver, mouse and keyboard are placed in improper distance. Keep the RF receiver away from the mouse, keyboard, monitor, computer, and the electrical devices at least 20cm (about 8 inches). Refer to 2.4 Setting up Your RF Desktop.
- Do not use your RF keyboard or mouse on a metal surface. Use a pad to prevent the radio channel from being interfering.

When ACPI Power Management Keys cannot work properly...

- The ACPI need correct OS and BIOS to support it. Now, only Windows98 (or later) supports ACPI Power Management Keys. If you use any other systems, ACPI Power Management Keys should not work properly. If you already have Windows98 (or later), please make sure your system to meet ACPI specs totally. If so, you can only get the sleep function. And if you want to fine which BIOS supports ACPI, please connect hyper link under below:

http://www.microsoft.com/hwdev/onnow/ACPI_lists.htm

6. Maintenance

The mouse might pick up dust or lint after prolonged use. If the cursor is not moving smoothly on the screen, follow these steps to clean the mouse.

- Turn off your computer.
- Turn the RF mouse upside down and remove the mouse ball retainer by turning it counterclockwise until it loosens.
- Use a soft dry cloth or non-abrasive cleaner to clean the ball.
- Use a cotton swab with a non-abrasive cleaner to clean the roller inside the mouse ball compartment.
- Replace the mouse ball and its retainer.

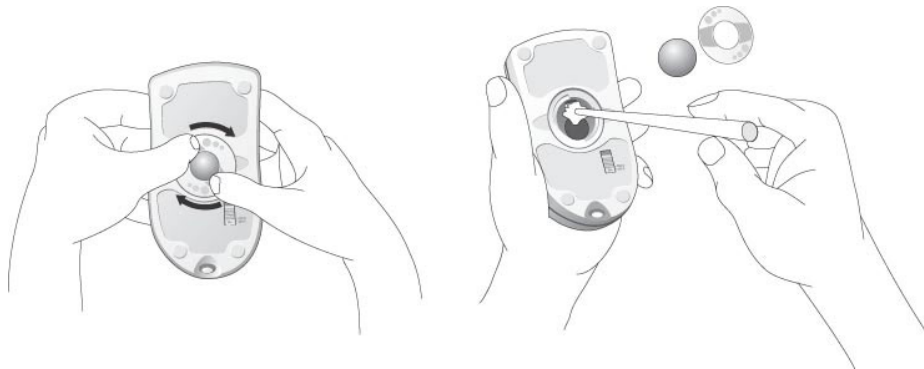


Figure 9: How to Maintain Your Wireless Mouse

Dear User,

This product has been proved that the essential requirements regulated in R&TTE Directive 99/5/EC are fulfilled. We would like to follow Annex IV and Annex VII to mark our product by the following symbol.



We would like also to inform you that the national authorities of the following Member States have been notified, according to the Directive, for the frequency spectrum application of this product. And this product is allowed to be placed in their markets. (**Germany, UK, France, Italy, Spanish, Portugal, Holland, Belgium, Luxembourg, Switzerland, Austria, Denmark, Sweden, Norway, and Finland.**)

LIMITATION OF LIABILITY. THE WARRANTIES SET FORTH IN THIS AGREEMENT REPLACE ALL OTHER WARRANTIES. KYE EXPRESSLY DISCLAIMS ALL OTHER WARRANTIES, INCLUDING, BUT NOT LIMITED TO, THE IMPLIED WARRANTIES OF MERCHANTABILITY AND FITNESS FOR A PARTICULAR PURPOSE AND NON-INFRINGEMENT OF THIRD-PARTY RIGHTS WITH RESPECT TO THE DOCUMENTATION, SOFTWARE, AND HARDWARE. NO KYE DEALER, AGENT, OR EMPLOYEE IS AUTHORIZED TO MAKE ANY MODIFICATION, EXTENSION, OR ADDITION TO THIS WARRANTY. IN NO EVENT WILL KYE OR ITS SUPPLIERS BE LIABLE FOR ANY COSTS OF PROCUREMENT OF SUBSTITUTE PRODUCTS OR SERVICES, LOST PROFITS, LOSS OF INFORMATION OR DATA, OR ANY OTHER SPECIAL, INDIRECT, CONSEQUENTIAL, OR INCIDENTAL DAMAGES ARISING IN ANY WAY OUT OF THE SALE OF, USE OF, OR INABILITY TO USE ANY KYE PRODUCT OR SERVICE, EVEN IF KYE HAS BEEN ADVISED OF THE POSSIBILITY OF SUCH DAMAGES. IN NO CASE SHALL KYE'S LIABILITY EXCEED THE ACTUAL MONEY PAID FOR THE PRODUCTS AT ISSUE. Because some jurisdictions do not allow the limitation of implied warranties or liability for incidental, consequential, special, or indirect damages, the above limitation may not always apply. The above limitations will not apply in case of personal injury where and to the extent that applicable law requires such liability.

FCC Compliance and Advisory Statement. This hardware device complies with Part 15 of the FCC Rules. Operation is subject to the following two conditions: 1) this device may not cause harmful interference, and 2) this device must accept any interference received, including interference that may cause undesired operation. This equipment has been tested and found to comply with the limits for a Class B digital device, pursuant to Part 15 of the FCC Rules. These limits are designed to provide reasonable protection against harmful interference in a residential installation. This equipment generates, uses, and can radiate radio frequency energy and, if not installed or used in accordance with the instructions, may cause harmful interference to radio communications. However, there is no guarantee that interference will not occur in a particular installation. If this equipment does cause harmful interference to radio or television reception, which can be determined by turning the equipment off and on, the user is encouraged to try to correct the interference by one or more of the following measures: 1) reorient or relocate the receiving antenna; 2) increase the separation between the equipment and the receiver; 3) connect the equipment to an outlet on a circuit different from that to which the receiver is connected; 4) consult the dealer or an experienced radio/TV technician for help. Any changes or modifications not expressly approved by the party responsible for compliance could void the user's authority to operate the equipment. Where shielded interface cables have been provided with the product or specified additional components or accessories elsewhere defined to be used with the installation of the product, they must be used in order to ensure compliance with FCC regulations.

Canadian DOC Statement. This digital device does not exceed the Class B limits for radio noise emissions from digital apparatus specified in the interference-causing equipment standard entitled "Digital Apparatus," ICES-003 of the Department of Communications.

Cet appareil numérique respecte les limites bruits radioélectriques applicables aux appareils numériques de Classe B prescrites dans la norme sur le matériel brouilleur: "Appareils Numériques," NMB-003 dictée par le Ministère des Communications.

This device complies with RSS-210 of Industry and Science Canada. Operation is subject to the following two conditions. 1) this device may not cause interference, and 2) this device must accept any interference, including interference that may cause undesired operation of the device.