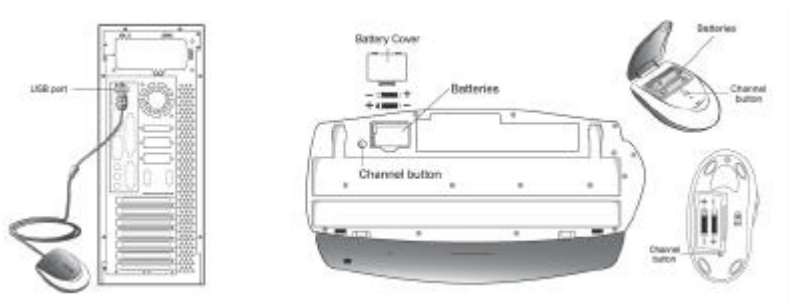

Hardware Installation

Hardware Installation

1. You can connect the receiver to a USB port of a PC.
2. Install two AA rechargeable batteries in the mouse and two AA rechargeable batteries in the keyboard.



3. Turn on your computer.
4. After you open Windows, please press the button **on** the receiver first (RB) and then press the button under the mouse (MB) and keyboard (KB) for ID channel setting. You only have six seconds to press the receiver, the channel button on the keyboard (KB), then the receiver button again and the channel button on the mouse (MB). So you press RB, KB, RB, MB to set the channel setting.

Important: You can use the battery charger receiver to recharge two AA or two AAA rechargeable batteries each time when you use the PC. Plug the battery charger receiver USB connector into the PC directly and remember do not put the batteries in the wrong direction, use the same types of batteries, and if you recharge via the USB hub, that will make your receiver, main-board and hub burn or become non-usable easily. Also, keep all drinks away! If any spill occurs on the receiver, unplug the USB connector first and clean the receiver immediately. **Please remove the batteries if you do not use this device for at least two weeks.**

Warning: (Troubleshooting)

1. When you use Wireless TwinTouch Optical Office on a desk that is made of metal, try using a pad and reduce the receiving distance.
2. Before the first installation is completed (channel setting ready), the keyboard and mouse will not work in DOS. **If your USB keyboard does not work in BIOS, DOS or Windows, then use another PS2 keyboard to make the USB controller (USB function) and USB legacy (USB keyboard) “On” in the BIOS setup. This may occur with older BIOS versions. Then unplug the PS2 keyboard and plug in your USB keyboard and everything should be working properly.**
3. The Wireless TwinTouch Optical Office channel provides 256 ID-codes, and it automatically selects the ID # for your keyboard and mouse. You can only set up one Wireless TwinTouch Optical Office at a time. But if you have additional Wireless TwinTouch Optical Office sets in an area of 10 square meters, more interference will occur between the receiver and your keyboard and mouse.
4. If you feel the mouse does not move smooth as usual or the keyboard does not work when typing, that the batteries have lost their charge, so please replace them. Also, the wireless icon will be blinking “red” when there is a battery-low situation. The LED on the receiver shows the battery-recharging status (from shining to LED completely “on” for battery full). **You should set up channel again every time you replace batteries.**



5. If you need to buy new batteries, please choose Ni-MH (Nickel-Metal-Hydride) batteries with AA size, 1300 to 1600mAh and 1.2 Volts. **Please do not mix or use other types of batteries (Li-ion, Ni-Cd, Alkaline, etc.).**
6. The Wireless TwinTouch Optical Office with radio frequency gives you free movement and an enjoyable experience. For optimal performance, place the receiver at least 8 inches (about 20 cm) away from the mouse and other electrical devices, such as the computer, monitor, and etc.

Software Installation

1. Make sure the mouse and keyboard is connected to the computer.
2. Put the Setup disk (or CD) into the disk drive.
3. Follow the instructions on the screen to finish the software installation.

Factory Setting

1. Mouse:



Magic-Roller Press the “Magic-Roller” to surf the Internet and Windows documents

Left Button Provides traditional mouse functions such as click, double click and drag.

Right Button You can assign this button frequently used keyboard and mouse

functions in addition to features like EasyJump, Auto-Panning, Zoom, etc.

Roller Button You can assign this button frequently used keyboard and mouse

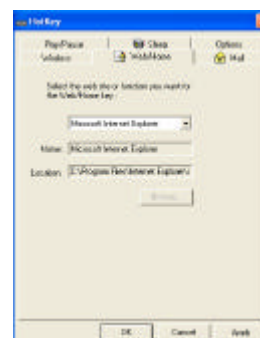
functions in addition to features like EasyJump, Auto-Panning, Zoom, etc.

Side Button You can assign the following function (Application/Document, Horizontal Scroll, Last/Next Page, and Zoom in/out)

to the upper or lower side button with the roller.

2. Keyboard:

1. Word: Open Word application
2. Excel: Open Excel application
3. Scroll Wheel: For fast browsing and switching between applications. (If you want to select the application, please switch the scroll wheel again.)
4. Vol.-& +: decrease or increase volume
5. Mute: [Remove the sound](#)
6. Play & Pause: Play and pause of audio or video CD's
7. Rewind: Previous track of audio or video CD's
8. Forward: Next track of audio or video CD's
9. Stop: Stop play of audio or video CD's
10. Media: Controls the playback of music CDs and PC audio
11. E-mail: Open mail folder
12. Stop: Stop your command when you using browser
13. Refresh: Refresh the page
14. Back: See last page when viewing the Internet
15. www: Open browser in Netscape or IE
16. Forward: Go to next page when viewing the Internet
17. Search: Open the search function when you using browser
18. My favorite: Open my favorite web-site
19. Sleep: Turn system into sleep mode
20. Calculator: Open the calculator from Windows
21. My Computer: Open my computer folder from Windows



Federal Communication Commission Interference Statement

This equipment has been tested and found to comply with the limits for a Class B digital device, pursuant to Part 15 of the FCC Rules. These limits are designed to provide reasonable protection against harmful interference in a residential installation. This equipment generates, uses and can radiate radio frequency energy and, if not installed and used in accordance with the instructions, may cause harmful interference to radio communications. However, there is no guarantee that interference will not occur in a particular installation. If this equipment does cause harmful interference to radio or television reception, which can be determined by turning the equipment off and on, the user is encouraged to try to correct the interference by one of the following measures:

- Reorient or relocate the receiving antenna.
- Increase the separation between the equipment and receiver.
- Connect the equipment into an outlet on a circuit different from that to which the receiver is connected.
- Consult the dealer or an experienced radio/TV technician for help.

FCC Caution: Any changes or modifications not expressly approved by the party responsible for compliance could void the user's authority to operate this equipment.

This device complies with Part 15 of the FCC Rules. Operation is subject to the following two conditions: (1) This device may not cause harmful interference, and (2) this device must accept any interference received, including interference that may cause undesired operation.